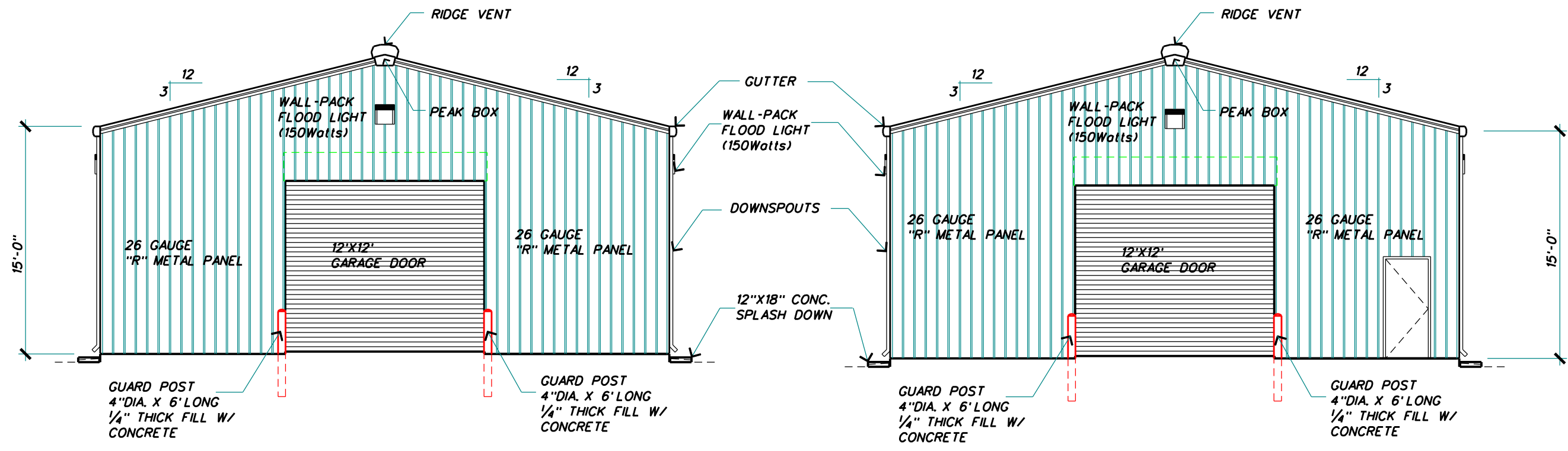




CITY OF MISSION

CITY OF MISSION
 GOLF COURSE
 PROPOSED WAREHOUSE



SCALE: 1/8" = 1' - 0"

SCALE: 1/8" = 1' - 0"

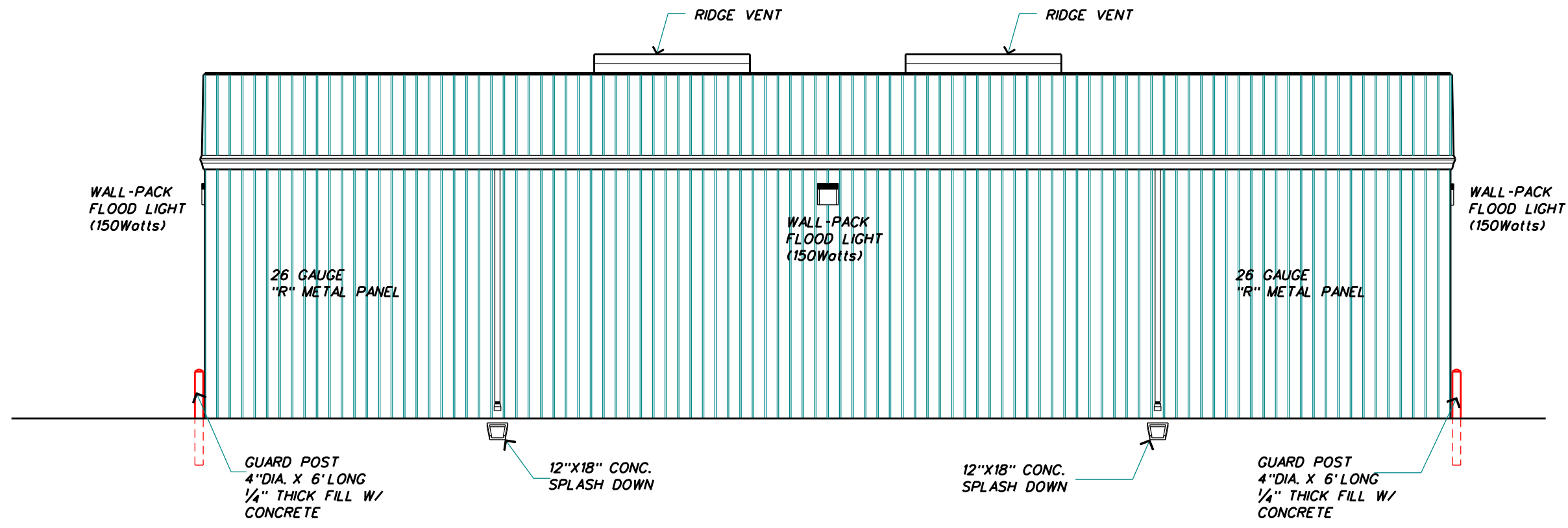
Project Name:	
CITY OF MISSION GOLF COURSE WAREHOUSE BLDG.	
Date:	08-05-24
Project No:	001-24
Sheet Number:	
4	OF 7



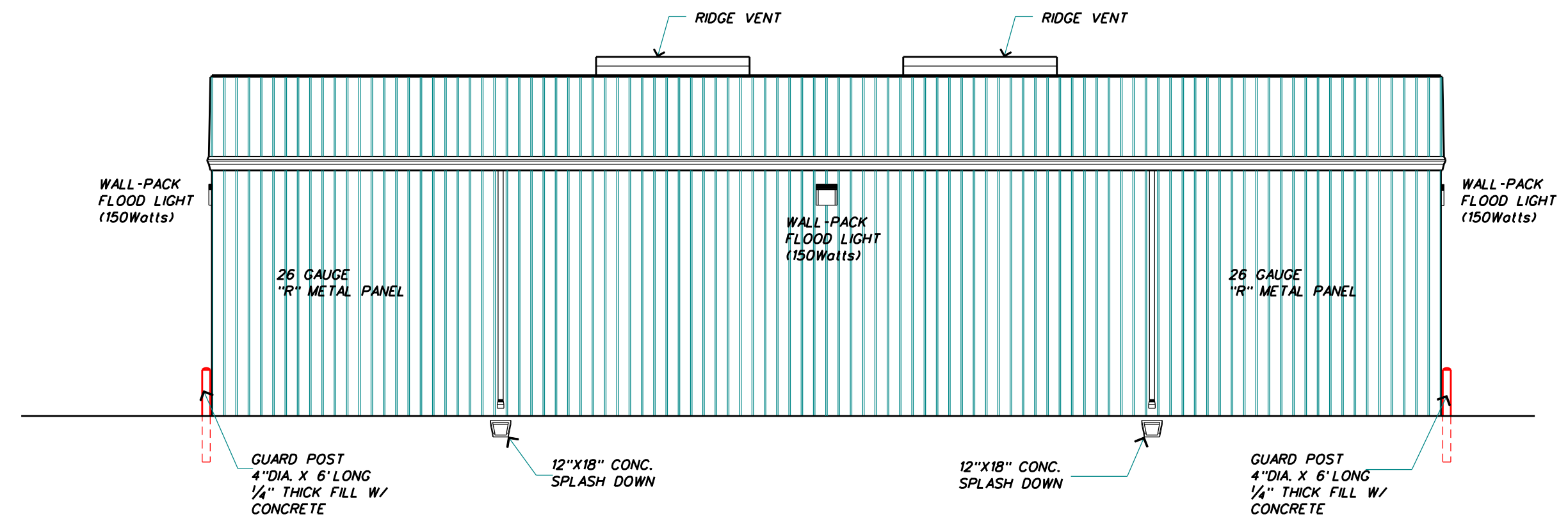
CITY OF MISSION

CITY OF MISSION
GOLF COURSE
PROPOSED WAREHOUSE

Project Name:	
CITY OF MISSION GOLF COURSE WAREHOUSE BLDG.	
Date:	08-05-24
Project No:	001-24
Sheet Number:	
5	OF 7



NORTH SIDE VIEW
SCALE: 1/8" = 1' - 0"

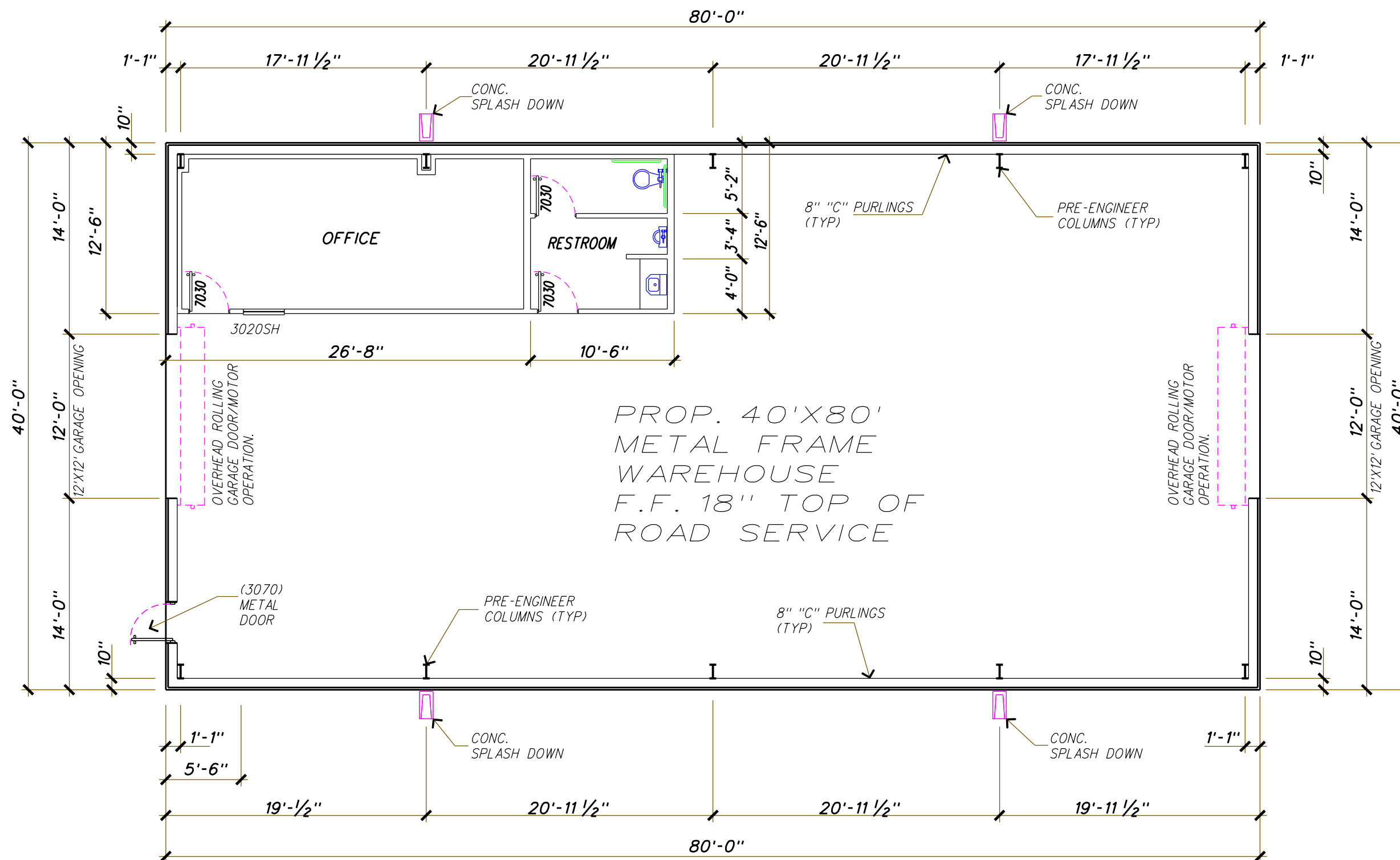


SOUTH SIDE VIEW
SCALE: 1/8" = 1' - 0"



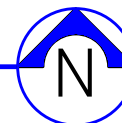
CITY OF MISSION

CITY OF MISSION
 GOLF COURSE
 PROPOSED WAREHOUSE



FLOOR PLAN

SCALE: 1/8" = 1' - 0"



Project Name:

CITY OF MISSION
 GOLF COURSE
 WAREHOUSE BLDG.

Date: 08-05-24

Project No: 001-24

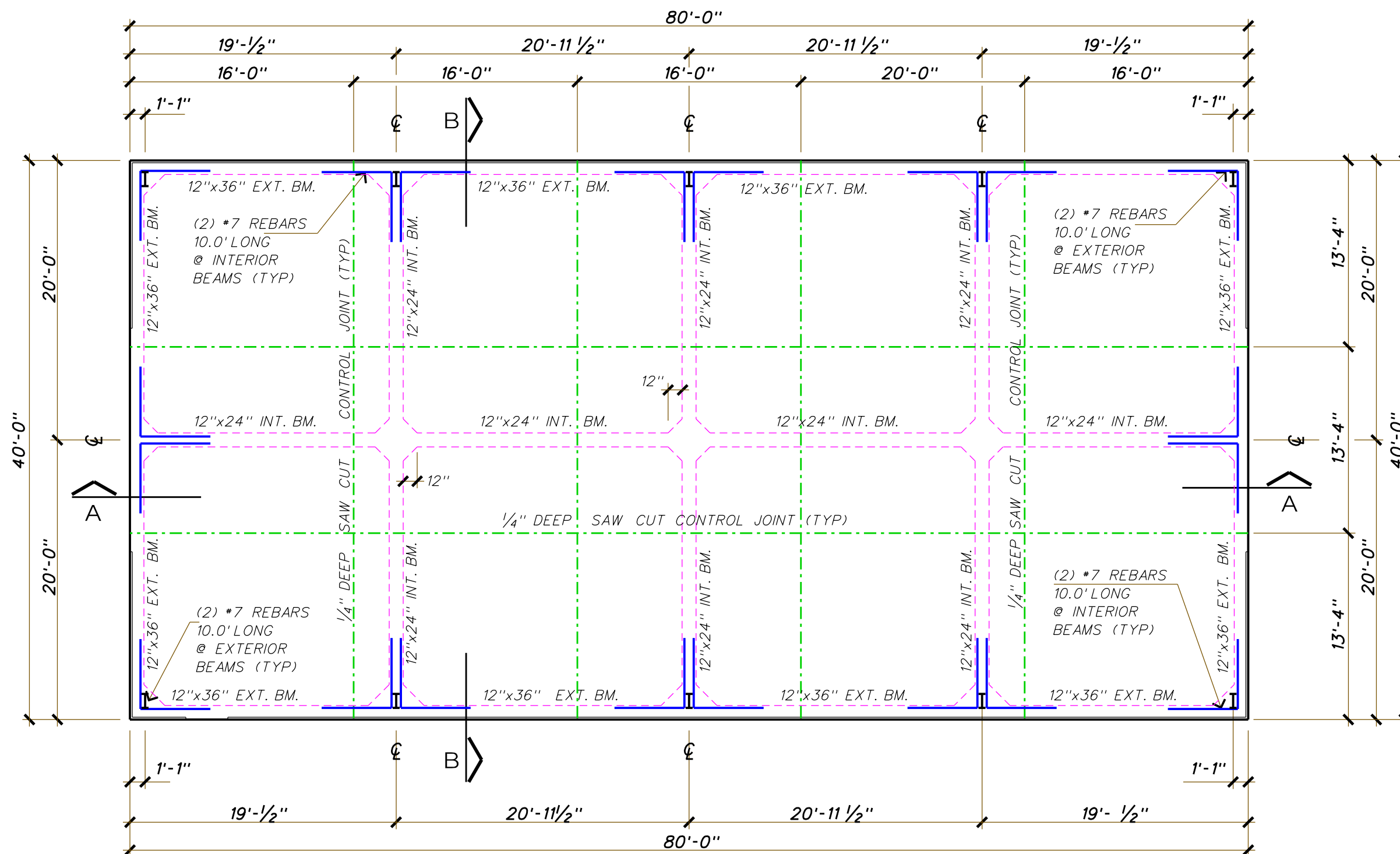
Sheet Number:

2 OF 7



CITY OF MISSION

CITY OF MISSION
GOLF COURSE
PROPOSED WAREHOUSE

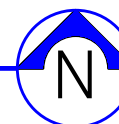


NOTE:

1. CONTRACTOR MUST USE 12" SELECT FILL WITH A 17 PIMAX. AND A 95% COMPACTION AT FOUNDATION PAD
2. USE A36 ANCHOR BOLTS
3. USE 12"x18" SPLASH BLOCKS
4. OVERHEAD GARAGE DOORS TO BE MOTORIZED AND MANUAL

FOUNDATION PLAN

SCALE: 1/8" = 1' - 0"



NOTE:

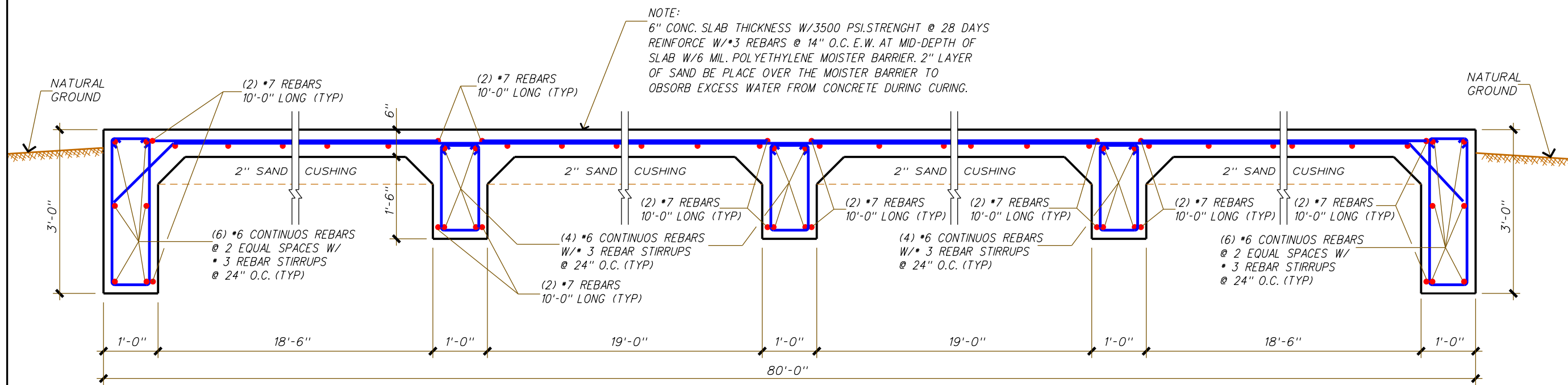
6" CONC. SLAB THICKNESS W/3500 PSI. STRENGTH @ 28 DAYS REINFORCE W/#3 REBARS @ 14" O.C. E.W. AT MID-DEPTH OF SLAB W/6 MIL. POLYETHYLENE MOISTURE BARRIER. 2" LAYER OF SAND BE PLACE OVER THE MOISTURE BARRIER TO OBSORB EXCESS WATER FROM CONCRETE DURING CURING.

Project Name:	
CITY OF MISSION GOLF COURSE WAREHOUSE BLDG.	
Date:	08-05-24
Project No:	001-24
Sheet Number:	



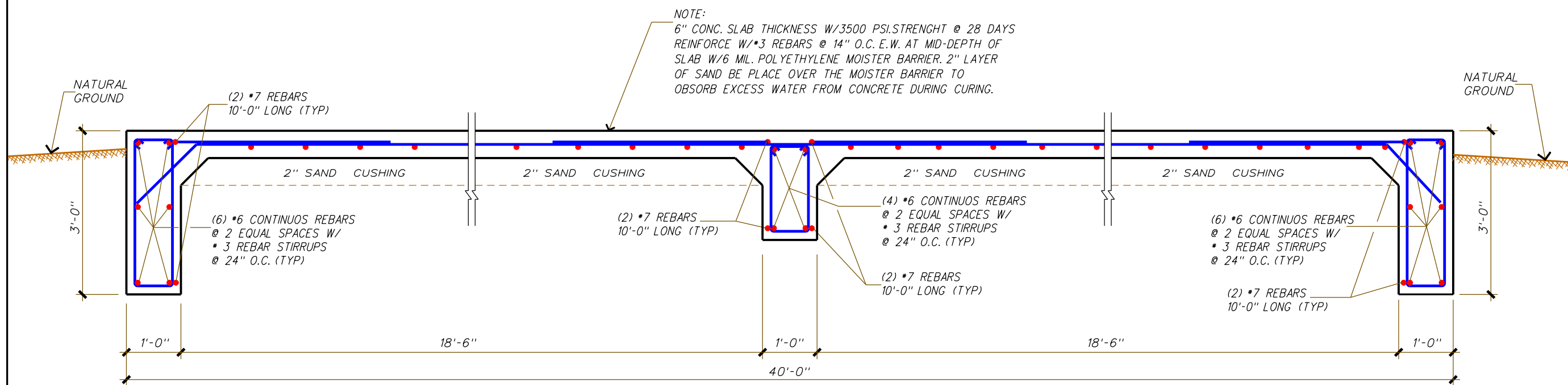
CITY OF MISSION

CITY OF MISSION
GOLF COURSE
PROPOSED WAREHOUSE



DETAIL SECTION "A-A"

SCALE : 1/4" = 1'-0"



DETAIL SECTION "B-B"

SCALE : 1/4" = 1'-0"

Project Name:	
CITY OF MISSION GOLF COURSE WAREHOUSE BLDG.	
Date:	08-05-24
Project No:	001-24
Sheet Number:	
7	OF 7