

**ITEM# 1.4**

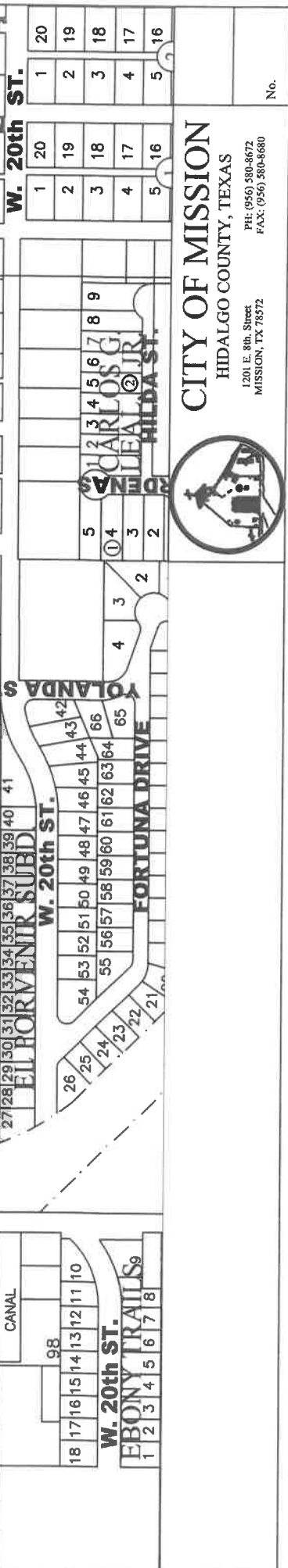
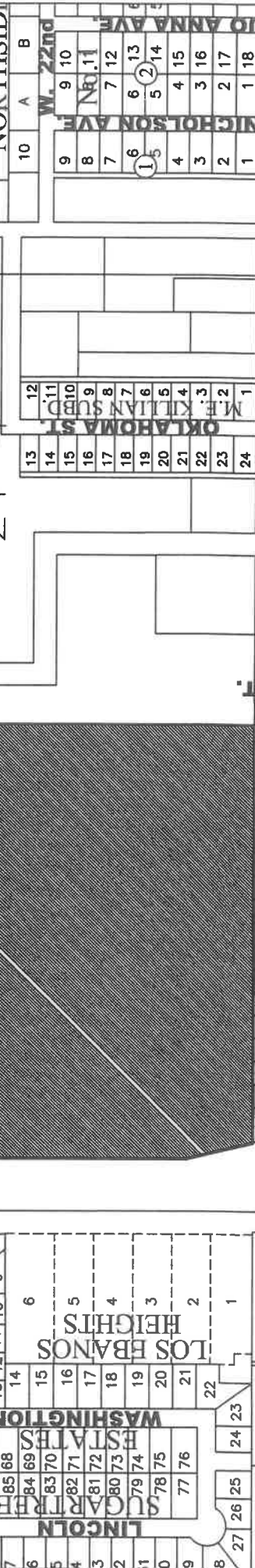
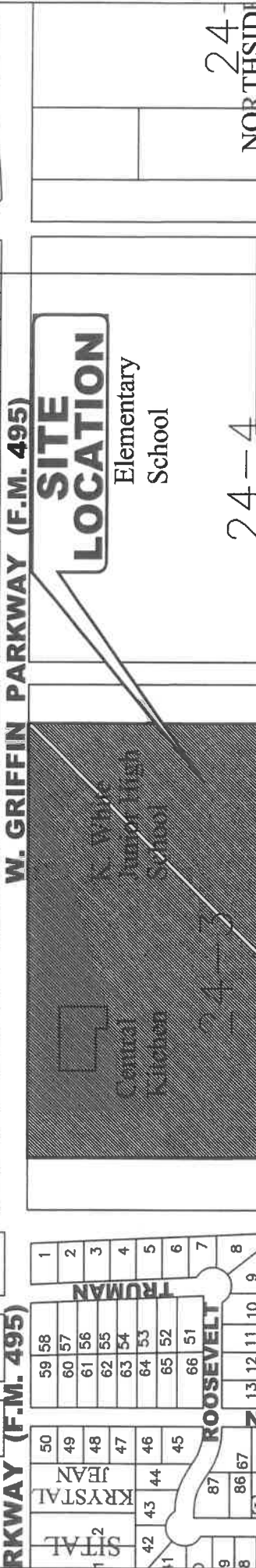
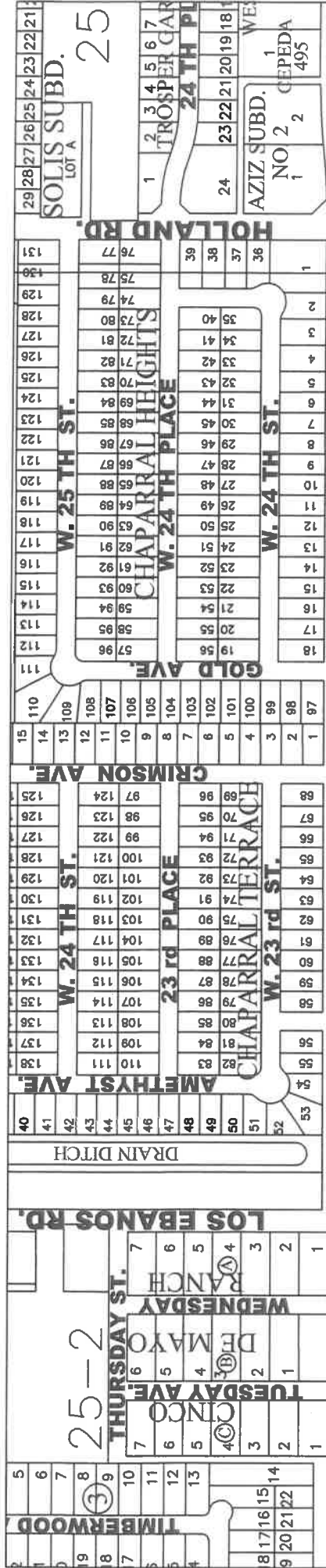
**CONDITIONAL USE PERMIT:** To Construct a Wireless 140' Tower  
& associated ground equipment  
1201 W. Griffin Parkway  
Being a tract of land containing 0.28  
gross acres out of Lots 24-3 and 24-4,  
West Addition to Sharyland Subdivision  
P  
Insight Public Sector

**REVIEW DATA**

The site is located near the southeast corner of Los Ebanos Road and W. Griffin Parkway (FM 495) along the south side of W. Griffin Parkway. -see vicinity map. Hidalgo Co. is in the process of providing community wireless for the surrounding areas via the proposed telecommunications tower. Currently, there are no other towers near this location. The proposed tower is outside any easements and complies with the required setbacks.

**REVIEW COMMENTS:** Staff notes that there used to be a telecommunications tower at the location but was removed. Any new tower requires a conditional use permit. A total of 61 notices were sent out to property owners within 200' of the proposed telecommunications tower and as of this writing staff has not received any comments in favor or against the request.

**RECOMMENDATION:** Staff recommends approval subject to: 1) transferability to others, 2) comply with insurance requirements on telecommunications towers, and 3) acquisition of a Building Permit.



**SITE LOCATION**

Elementary School

24-4

24-3



**CITY OF MISSION**  
 HIDALGO COUNTY, TEXAS  
 1201 E. 8th Street  
 MISSION, TX 78772  
 PH: (956) 380-8672  
 FAX: (956) 380-8680

No.

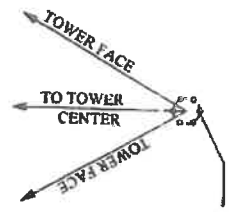
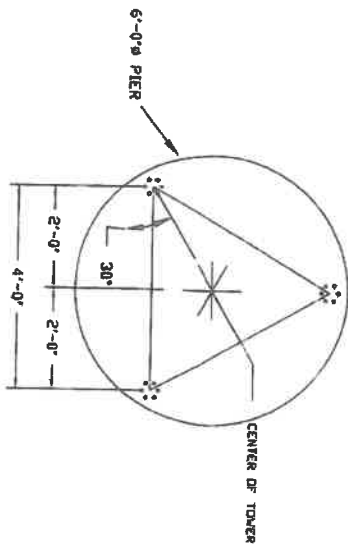
**SITE  
LOCATION**

**W. GRIFFIN PKWY (S.H. 495)**

**LOS EBANOS RD.**

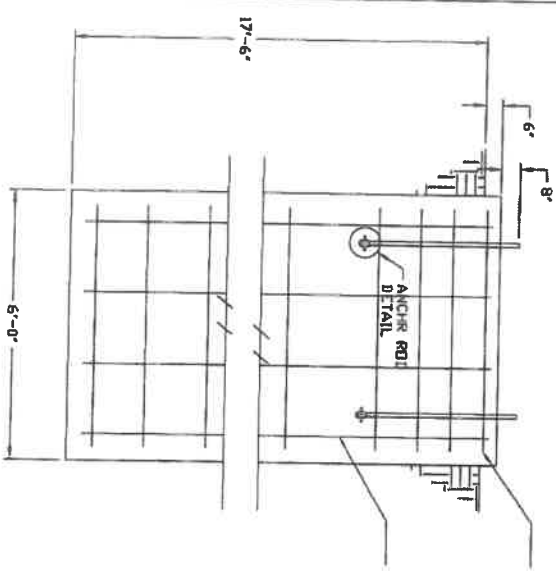


\*\*\*\*USE FOR CONSTRUCTION\*\*\*\*



(9) 7/8"Ø X 56" LONG ANCHOR BOLTS PER LEG, SPACED AT 60" ON A 6'Ø CIRCLE WITH TEMPLATES TOP AND BOTTOM AS SUPPLIED BY WESTERN TOWERS.

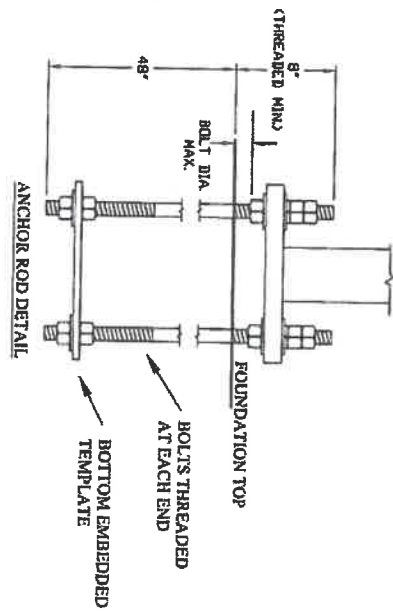
- NOTES:
1. CONCRETE SHALL OBTAIN 3000PSI COMPRESSIVE STRENGTH AT 28 DAYS.
  2. ANCHOR BOLT'S SHALL BE 7/8"Ø ASTM F1554-GRADE 105 SUPPLIED WITH FIVE EACH GALVANIZED HH NUTS AND WASHERS. WASHERS SHALL CONFORM TO ASTM F436. NUTS SHALL CONFORM TO ASTM A563 GRADE "A" OR BETTER. ANCHOR BOLT SHALL BE HOT DIPPED GALVANIZED GALVANIZING SHALL CONFORM TO ASTM A153.
  3. ALL REBAR SHALL HAVE A MINIMUM OF 3" CONCRETE COVER AND SHALL CONFORM TO THE ASTM A615 GRADE SPECIFIED.
  4. FOUNDATION DESIGNED PER PRESUPPTIVE SOIL'S FOUND IN TIA/EIA 222, REV. H STANDARD. ACTUAL SOIL PARAMETERS MUST BE VERIFIED BY A GEOTECHNICAL ANALYSIS. WITHOUT THIS VERIFICATION, IN CASE OF ANY FOUNDATION FAILURE, WESTERN TOWERS WILL NOT BE RESPONSIBLE.
  5. 189 C.F. OF CONCRETE REQUIRED THIS SITE AND WASTE ACCOUNTED FOR.



(23) #4 GR40 X 66" ØD MAX. CIRCULAR TIES SPACED (ØD) TIES AT 6" O.C. AT TOP OF PIER. REMAINDER AT 12" O.C.

(14) #8 GR. 60 VERTICAL REBAR 17'-6" LONG INSIDE OF CIRCLE REBAR TIES.

BASE REACTIONS:  
 MOMENT = 694 KIP-FT.  
 AXIAL = 15 KIPS  
 MAX SHEAR = 8 KIPS



PROPRIETARY DRAWINGS  
 CONFIDENTIAL INFORMATION WHICH CANNOT BE ISSUED, COPIED, OR USED BY OTHERS WITHOUT WRITTEN AUTHORIZATION BY WESTERN TOWERS.  
 FOR USE BY WESTERN TOWERS ONLY.

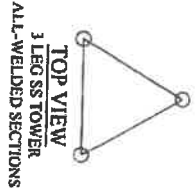


TEXAS FIRM# P19610

WESTERN TOWERS  
 320 W 28th • San Angelo, Texas 76903  
 1.800.622.6539  
 www.westerntowers.com

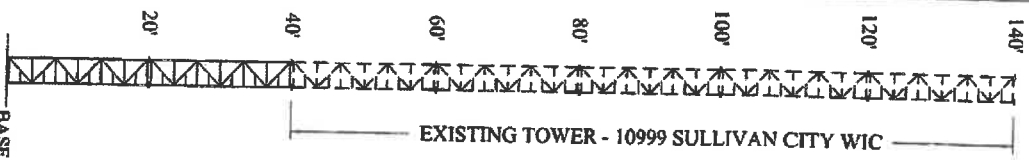
FOUNDATION	
Mission	SmartWave Technologies
PROJECT NO	
DWG. NO.	1175-FND
DATE	12/20/22
PAGE	1 OF 1
REV	PS

\*\*\*\*\*USE FOR CONSTRUCTION\*\*\*\*\*



ELEV.	ITEM
140'	LIGHTNING ROD
140'	(2) VHL P3-11 W
140'	(2) KP-5PDCSC-2
137'	(8) MIMOSA ASC W/ MOUNT
134'	(8) N5-45X4 W/ MOUNT
131'	(2) CSC

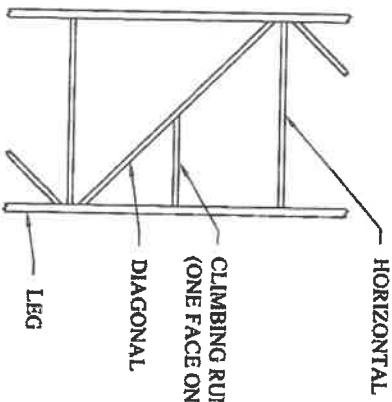
ELEV.	TOP WIDTH	BASE WIDTH	LEG	DIAGONAL	HORIZONTAL	CLIMB RUNG
20'-40'	4'-0"	4'-0"	2 1/2"Ø S.R.	1 1/4"Ø S.R.	3/4"Ø S.R.	9/16"Ø S.R.
0'-20'	4'-0"	4'-0"	2 3/4"Ø S.R.	1 1/4"Ø S.R.	1"Ø S.R.	9/16"Ø S.R.



TEXAS FIRM# F19610  
12.22.22

BASE REACTIONS  
MOMENT: 694 K-FT  
SHEAR: 8 K  
AXIAL: 15 K

LEG REACTIONS  
COMP: 206 K  
UPLIFT: 194 K  
SHEAR: 4 K



PROPRIETARY DRAWINGS  
CONFIDENTIAL INFORMATION WHICH CANNOT BE  
ISSUED, COPIED, OR USED BY OTHERS WITHOUT  
WRITTEN AUTHORIZATION BY WESTERN TOWERS  
FOR USE BY WESTERN TOWERS ONLY.

SITE: MISSION
HEIGHT: 140' (40' EXT)
TIA STD: 222-H
WIND: 119 MPH
ICE: 1/2" (30 MPH)
EXP. CAT.: C
TOPO. CAT.: 1
RISK CAT.: 2

- NOTES
- DESIGN MEETS THE REQUIREMENTS OF TIA DESIGN STANDARD LISTED ABOVE.
  - LEG AND FLANGE PLATE STEEL SHALL BE MINIMUM 50 KSI YIELD. ALL OTHER STEEL SHALL BE MINIMUM 36 KSI YIELD.
  - ALL STEEL SHALL BE HOT DIPPED.
  - ON VARIOUS PER ASTM A 123.
  - ALL CONNECTIONS ARE DESIGNED TO HOLD THE DESIGN LOAD OF THE CONNECTING MEMBERS.
  - ALL CONNECTIONS (WELDED AND BOLTED) CONFORM TO AISC MANUAL OF STEEL CONSTRUCTION - LATEST EDITION.
  - IF ANY ITEM OF THE COMPLETED STRUCTURE VARIES FROM WHAT IS SHOWN ON THIS DRAWING THE CERTIFICATION BY WESTERN TOWERS SHALL BE CONSIDERED INVALID.
  - TOWER RATING- 98.3%

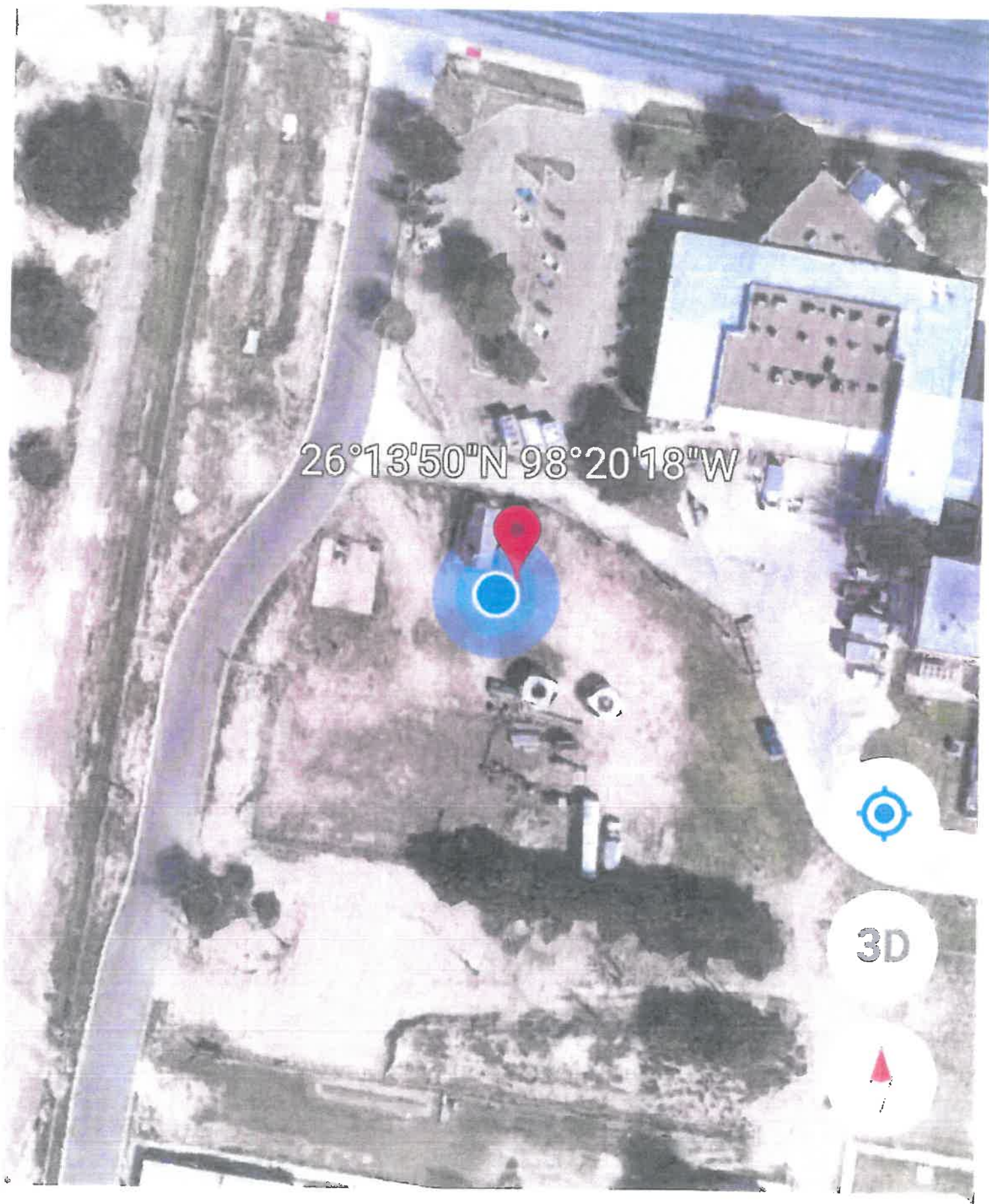
**WESTERN TOWERS**

320 W 26th - San Angelo, Texas 76903  
1.800.622.6539  
WWW.WESTERTOWERS.COM

DATA SHEET	JOB NO.	22-52-01
HIDALGO COUNTY, TX	DWG. NO.	12222022
SMARTWAVE	DATE	11/15/2022
	PAGE	1 OF 1
	BY	JIB







Dropped Pin



E4642-00-000-0033-00 ( 552469)  
C & C TEXAS CONSTRUCTION LLC  
2213 TORRIE LN  
MISSION TX 78572

E4642-00-000-0034-00 ( 552470)  
RIVAS ROBERTO SR & ALICIA S  
1206 W 20TH ST  
MISSION TX 78572

E4642-00-000-0035-00 ( 552471)  
CORTES JUAN E ESTRADA & ANA LUIS  
1204 W 20TH ST  
MISSION TX 78572

E4642-00-000-0036-00 ( 552472)  
GARCIA NICOLAS  
1202 W 20TH ST  
MISSION TX 78572

E4642-00-000-0037-00 ( 552473)  
GARZA ROEL  
1200 W 20TH ST  
MISSION TX 78572

E4642-00-000-0038-00 ( 552474)  
TREVINO AMANDA LANNETTE  
1112 W 20TH ST  
MISSION TX 78572

E4642-00-000-0039-00 ( 552475)  
URIVE ARMANDO  
1110 W 20TH ST  
MISSION TX 78572

E4642-00-000-0040-00 ( 552476)  
LEAL MARIA GUADELUPE  
1108 W 20TH ST  
MISSION TX 78572

E4642-00-000-0041-00 ( 552477)  
SANDOVAL MIRNA  
1106 W 20TH ST  
MISSION TX 78572

E4642-00-000-0042-00 ( 552478)  
VILLARREAL LUIS ALBERTO & CYNTHIA  
1101 W 20TH ST  
MISSION TX 78572

E4642-00-000-0043-00 ( 552479)  
MACIAS JUAN C & ERICA  
1103 W 20TH ST  
MISSION TX 78572

E4642-00-000-0044-00 ( 552480)  
SOLIS VERONICA  
1105 W 20TH ST  
MISSION TX 78572

E4642-00-000-0045-00 ( 552481)  
MORENO ROBERTO & VIVIANNA  
1107 W 20TH ST  
MISSION TX 78572

E4642-00-000-0046-00 ( 552482)  
TOVAR VICTOR HUGO & CATALINA  
1109 W 20TH ST  
MISSION TX 78572

E4642-00-000-0047-00 ( 552483)  
SANDOVAL EDGAR JOSE  
100 N SANTA ROSA APT 1123  
SAN ANTONIO TX 78207

E4642-00-000-0048-00 ( 552484)  
VILLALOBOS DANIEL J  
VIRGINIA GARCIA  
1113 W 20TH ST  
MISSION TX 78572

E4642-00-000-0049-00 ( 552485)  
GARCIA JUAN DAVID  
1017 E 2ND ST  
MISSION TX 78572

E4642-00-000-0050-00 ( 552486)  
MACIAS JORGE & JORGE L & JUAN C &  
1101 W 20TH ST  
MISSION TX 78572

E4642-00-000-0051-00 ( 552487)  
VALLEJO ROMAN & SOCORRO CAMACHO  
1205 W 20TH ST  
MISSION TX 78572

E4642-00-000-0052-00 ( 552488)  
PETER ANA MARICELA  
1207 W 20TH ST  
MISSION TX 78572

E4642-00-000-0053-00 ( 552489)  
ESQUIVEL REGINA  
1209 W 20TH ST  
MISSION TX 78572

E4642-00-000-0054-00 ( 552490)  
GARCIA ZACARIAS G & LETICIA P  
1211 W 20TH ST  
MISSION TX 78572

O3100-09-000-0007-00 ( 450458)  
MENEZ ISRAEL & ROSA L MENEZ  
2202 TRUMAN AVE  
MISSION TX 78572

O3100-09-000-0008-00 ( 450457)  
OLIVAREZ ENRIQUE  
C/O MARIA G MARTINEZ  
1013 N 23RD ST  
MCALLEN TX 78501

W0100-00-023-0004-01 ( 316842)  
FLORES RAMON ARTURO  
1013 W 20TH ST  
MISSION TX 78572

W0100-00-024-0002-03 ( 316881)  
GGC GROUP LLC  
309 N MOCKINBIRD AVE  
MISSION TX 78572

W0100-00-024-0003-00 ( 316882)  
MISSION CONSOLIDATED ISD  
1116 N CONWAY AVE  
MISSION TX 78572

W0100-00-024-0003-05 ( 316883)  
MISSION CONSOLIDATED ISD  
1116 N CONWAY AVE  
MISSION TX 78572

W0100-00-024-0004-00 ( 316884)  
MISSION CONSOLIDATED ISD  
1116 N CONWAY AVE  
MISSION TX 78572

W0100-00-024-0004-11 ( 316894)  
MISSION CONSOLIDATED ISD  
1116 N CONWAY AVE  
MISSION TX 78572

C4020-00-000-0017-00 ( 134455)  
SUTTON WILLIAM B JR  
1405 YUCCA AVE  
MCALLEN TX 78504

C4020-00-000-0097-00 ( 134535)  
DOLIFKA LAND COMPANY  
PO BOX 444  
BRIGHTON CO 80601

C4020-00-000-0098-00 ( 134536)  
GARCIA JOSE RAUL & MARIA  
2303 GOLD AVE  
MISSION TX 78574

C4020-00-000-0099-00 ( 134537)  
GIRON JOSE LUIS & MARIA F  
2305 GOLD AVE  
MISSION TX 78574

C4040-00-000-0001-00 ( 134572)  
CONTRERAS ARMANDO & LOURDES  
PO BOX 3887  
MISSION TX 78573

C4040-00-000-0002-00 ( 134573)  
CONTRERAS ARMANDO & LOURDES  
PO BOX 3887  
MISSION TX 78573

C4040-00-000-0003-00 ( 134574)  
CONTRERAS ARMANDO & LOURDES  
PO BOX 3887  
MISSION TX 78573

C4040-00-000-0052-00 ( 134623)  
GONZALEZ JOSE A GARZA &  
ELIZABETH RODRIGUEZ SANCHEZ  
2305 AMETHYST AVE  
MISSION TX 78574

C4040-00-000-0053-00 ( 134624)  
GONZALEZ JOSE A GARZA  
2305 AMETHYST AVE  
MISSION TX 78574

C4040-00-000-0054-00 ( 134625)  
VELASQUEZ CARLOS A & MARTHA E LOPEZ  
1213 W 23RD ST  
MISSION TX 78574

C4040-00-000-0056-00 ( 134626)  
CARRASCO YESENIA  
1211 WEST 23RD ST  
MISSION TX 78574

C4040-00-000-0058-00 ( 134627)  
VALLEJO IRMA LINDA  
2600 MIMOSA ST APT C  
MISSION TX 78574

C4040-00-000-0059-00 ( 134628)  
GARCIA ROSA E  
1205 W 23RD ST  
MISSION TX 78574

C4040-00-000-0060-00 ( 134629)  
SANTOS CARLOS & MARTHA J HERNANDEZ  
1203 W 23RD ST  
MISSION TX 78574

C4040-00-000-0061-00 ( 134630)  
VILLARREAL JUAN FRANCISCO  
1201 W 23RD ST  
MISSION TX 78574

C4040-00-000-0062-00 ( 134631)  
SILVA MARIBEL  
1113 W 23RD ST  
MISSION TX 78574

C4040-00-000-0063-00 ( 134632)  
OYERVIDES REYNALDO & ANNA I  
1111 W 23RD ST  
MISSION TX 78574

C4040-00-000-0064-00 ( 134633)  
RODRIGUEZ A B  
1109 WEST 23RD ST  
MISSION TX 78574

C4040-00-000-0065-00 ( 134634)  
DURAN ERIKA J  
1107 W 23RD ST  
MISSION TX 78574

C4040-00-000-0066-00 ( 134635)  
GARCIA BERTHA LETICIA  
1105 W 23RD ST  
MISSION TX 78574

C4040-00-000-0067-00 ( 134636)  
GARCIA BERTHA LETICIA  
1105 W 23RD ST  
MISSION TX 78574

C4040-00-000-0068-00 ( 134637)  
AP PROPERTIES LP  
11916 N BRYAN ROAD  
MISSION TX 78573

E4642-00-000-0025-00 ( 552461)  
RELKO MICHAEL J & ANA M  
1221 FORTUNA  
MISSION TX 78572

E4642-00-000-0026-00 ( 552462)  
RODRIGUEZ GEORGE G. JR & ELIZABETH  
1223 FORTUNA  
MISSION TX 78572

E4642-00-000-0027-00 ( 552463)  
SANCHEZ CLAUDIA & DAMIAN BENAVIDES  
1220 W 20TH ST  
MISSION TX 78572

E4642-00-000-0028-00 ( 552464)  
LOPEZ RAUL  
1218 W 20TH ST  
MISSION TX 78572

E4642-00-000-0029-00 ( 552465)  
YERENA ESTANISLADO  
MARTHA GONZALEZ  
1216 W 20TH ST  
MISSION TX 78572

E4642-00-000-0030-00 ( 552466)  
SANCHEZ CLAUDIA & DAMIAN DENAVIDES  
1220 W 20TH ST  
MISSION TX 78572

E4642-00-000-0031-00 ( 552467)  
PACHECO OLGA A & AMALIA  
1212 W 20TH ST  
MISSION TX 78572

E4642-00-000-0032-00 ( 552468)  
BENAVIDES DAMIAN & CLAUDIA SANCHEZ  
1210 W 20TH ST  
MISSION TX 78572

W0100-00-024-0004-12 ( 316895)

TREVINO JOSE F

1020 W 20TH ST

MISSION TX 78572