

VICINITY MAP

Contract Drawings For

TOWN OF MINTURN

ISSUE FOR PROJECT BID

METER HOUSE IMPROVEMENTS

Project No. 10348601

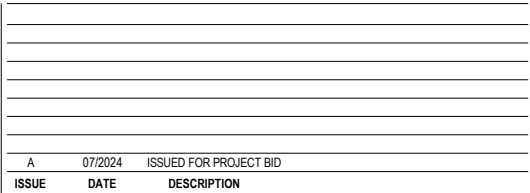
Date: JULY 2024

INDEX OF DRAWINGS

SHEET INDEX	
SHEET #	DESCRIPTION
SERIES 00 - GENERAL	
00G-000	COVER SHEET WITH INDEX
00G-001	ABBREVIATIONS
00G-002	GENERAL LEGEND
00G-003	PROCESS AND INSTRUMENTATION LEGEND
00G-005	ELECTRICAL LEGEND
00D-601	HYDRAULIC PROFILE
SERIES 01 - METER HOUSE	
01C-101	STAGING AND ACCESS PLAN
01Y-101	PROCESS AND INSTRUMENTATION DIAGRAM
01Y-501	MALOIT TANK ANTENNA IMPROVEMENTS
01Y-601	CONTROL PANEL LAYOUT
01Y-602	COMMUNICATIONS AND NETWORK DIAGRAM
01D-101	PROCESS PLAN AND SECTION
01E-101	UPPER LEVEL ELECTRICAL PLAN
01E-601	ONE-LINE AND PANELBOARD SCHEDULE



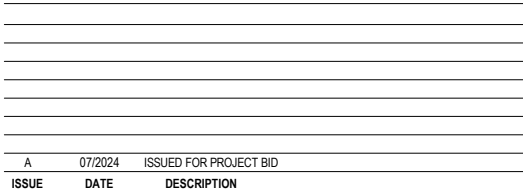
Autodesk Docs://10348601_Minturn_WTP_Design_2022 ACC/10348601_00GENERAL.M
6/25/2024 9:16:22 AM



SHEET
00G-001

SHEET

Autodesk Docs://10348601_Minturn_WTP_Design_2022 ACC/10348601_00GENERAL.MT
6/25/2024 9:16:23 AM



SHEET
00G-003



PROJECT MANAGER		
ELECTRICAL		
I&C		
CIVIL		
DRAWN BY		
PROJECT NUMBER		
ISSUE		
A	07/2024	ISSUED FOR PROJECT BID
ISSUE	DATE	DESCRIPTION

PROJECT MANAGER		JAROD C. LIMKE
ELECTRICAL		J. HUCKENPAHLER
I&C		C. OPPEGARD
CIVIL		M. JARRETT
DRAWN BY		E. PAZ
PROJECT NUMBER		10348601



2024-07-11



TOWN OF MINTURN

METER HOUSE IMPROVEMENTS

GENERAL ELECTRICAL LEGEND



FILENAME
SCALE

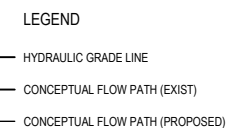
12" = 1'-0"

SHEET

00G-005

1	2	3	4	5	6	7	8
ONE-LINE, POWER, AND LIGHTING SYMBOLOGY				COMMUNICATION SYMBOLOGY	SITE SYMBOLOGY	CONTROL SYMBOLOGY	GENERAL NOTES
 LOW VOLTAGE CIRCUIT BREAKER (CB). RATING AND NO. OF POLES AS SHOWN. WHEN SPECIFIC TYPE, OTHER THAN MCCB, IS REQUIRED, X INDICATES TYPE. TYPES MCCB - MOLDED CASE ICCB - INSULATED CASE LVP - LOW VOLTAGE POWER MCP - MOTOR CIRCUIT PROTECTOR (RATING PER CONNECTED LOAD) TRIP UNIT L - LONG TIME PICKUP S - SHORT TIME PICKUP I - INSTANTANEOUS PICKUP G - GROUND FAULT PICKUP A - ARC ENERGY REDUCTION MODE INTERLOCK: X - INDICATES TYPE TYPES E - ELECTRICAL M - MECHANICAL K - KEY GROUND FAULT PROTECTION MEDIUM VOLTAGE CIRCUIT BREAKER FUSE, RATING, AND NUMBER OF FUSES AS NOTED FUSED SWITCH, CURRENT RATING, FUSE RATING, AND QUANTITY AS NOTED NON-FUSED SWITCH, CURRENT RATING, AND NUMBER OF POLES AS NOTED (3 POLE UON) DISCONNECT OR DRAWOUT CONNECTION MAGNETIC MOTOR STARTER SEPARATELY MOUNTED COMBINATION MAGNETIC MOTOR STARTER AND DISCONNECT MOTOR/LOAD CONTROLLER SEPARATELY MOUNTED MOTOR/LOAD CONTROLLER WITH SHORT CIRCUIT PROTECTION AND DISCONNECT MOTOR STARTER AND CONTROLLER SUBSCRIPTS A - MAGNETIC STARTER NEMA SIZE B - STARTER TYPE NONE - FULL VOLTAGE NON-REVERSING (FVNR) FVR - FULL VOLTAGE REVERSING 2S - TWO SPEED RVAT - REDUCED VOLTAGE AUTO TRANSFORMER C - CONTROL DIAGRAM OR CONTROLS SCHEDULE NUMBER (IF REQUIRED) D - CONTROLLER TYPE VFD - VARIABLE FREQUENCY DRIVE SS - SOLID STATE CONT - CONTACTOR SEPARATELY MOUNTED COMBINATION MOTOR STARTER OR CONTROLLER; SEE ELECTRICAL ONE - LINE DIAGRAM OR SCHEDULE FOR DESCRIPTION SEPARATELY MOUNTED MOTOR STARTER OR CONTROLLER; SEE ELECTRICAL ONE-LINE DIAGRAM OR SCHEDULE FOR DESCRIPTION NON-FUSED SAFETY SWITCH, 30A, 3P, X INDICATES AMP RATING GREATER THAN 30A FUSED SAFETY SWITCH, 3P, X INDICATES AMP RATING GREATER THAN 30A, Y INDICATES FUSE SIZE SEPARATELY MOUNTED CIRCUIT BREAKER; SEE ELECTRICAL ONE - LINE DIAGRAM OR SCHEDULE FOR DESCRIPTION MOTOR WITH DESIGN HORSEPOWER (WHEN INDICATED) GENERATOR TRANSFER SWITCH, CURRENT RATING, AND NUMBER OF POLES AS NOTED ATS - AUTOMATIC MTS - MANUAL	 TRANSFORMER Δ 3-PHASE, 3-WIRE DELTA CONNECTION Y 3-PHASE, 4-WIRE GROUNDING WYE CONNECTION SWITCHBOARD OR PANELBOARD; NAME, VOLTAGE, PHASE, NUMBER OF WIRES WHEN INDICATED VOLTAGE TRANSFORMER (VT, PT, OR CPT) CURRENT TRANSFORMER (CT) UTILITY WATT-HOUR METER PER UTILITY REQUIREMENTS DIGITAL METERING PACKAGE GROUND LIGHTNING ARRESTER LOW VOLTAGE SURGE PROTECTIVE DEVICE SELECTOR SWITCH PUSHBUTTON INSTRUMENTATION / CONTROL DEVICE SOLENOID VALVE CONTROL PANEL INTEGRAL OR PROVIDED WITH ASSOCIATED EQUIPMENT CONTROL PANEL WITH DISCONNECT SWITCH INTEGRAL OR PROVIDED WITH ASSOCIATED EQUIPMENT JUNCTION OR PULL BOX PANELBOARD (250V TO 600V) PANELBOARD (LESS THAN 250V) ELECTRICAL EQUIPMENT ENCLOSURE: SWITCHBOARD, MOTOR CONTROL CENTER, CONTROL PANEL, TRANSFORMER OR OTHER EQUIPMENT AS INDICATED. ESTIMATED SIZE AS INDICATED. WHEN USED X INDICATES EQUIPMENT TYPE. EQUIPMENT TYPES ATS - AUTOMATIC TRANSFER SWITCH CP - CONTROL PANEL MTS - MANUAL TRANSFER SWITCH MCC - MOTOR CONTROL CENTER UPS - UNINTERRUPTIBLE POWER SUPPLY VFD - VARIABLE FREQUENCY DRIVE SB - SWITCHBOARD SG - SWITCHGEAR T - TRANSFORMER PLUG-IN RECEPTACLE STRIP: QUANTITY AND SPACING OF RECEPTACLES AS NOTED OR SPECIFIED SPECIAL-PURPOSE RECEPTACLE AS DEFINED ON PLANS TWO RECEPTACLES IN 2-GANG BOX UNDER COMMON COVER PLATE DUPLEX RECEPTACLE SIMPLEX RECEPTACLE RECESSED FLOOR MOUNTED BOX, QUANTITY AND TYPE OF RECEPTACLES AS INDICATED SUBSCRIPTS X - INDICATES TYPE GFCI - GROUND FAULT CIRCUIT INTERRUPTER IG - ISOLATED GROUND TR - TAMPER RESISTANT PLH - PLUG LOAD HALF CONTROLLED PLD - PLUG LOAD DUAL CONTROLLED USB - USB CHARGING STATION SPD - SURGE PROTECTIVE DEVICE Y - INDICATES CIRCUIT NUMBER FROM PANELBOARD CONDUIT TURNING UP CONDUIT TURNING DOWN	 HOMERUN TO SOURCE (E.G. PANELBOARD, MCC) NUMBER IN PARENTHESES REPRESENTS CONDUCTOR SIZE OTHER THAN #12 SINGLE PHASE. 2#12, 1#12G IN 3/4" C THREE PHASE. 3#12, 1#12G IN 3/4" C UNLESS OTHERWISE NOTED. CONDUCTOR SIZE IS FOR ENTIRE CIRCUIT. SOURCE TO LAST DEVICE. ALSO, SEE ONE LINE DIAGRAM FOR CIRCUIT REQUIREMENTS CONDUIT CONNECTION TO EQUIPMENT CIRCUIT RUN BETWEEN DEVICES EXPOSED IN NON-ARCHITECTURALLY FINISHED AREAS; CONCEALED IN ARCHITECTURALLY FINISHED AREAS. CONDUIT AND CONDUCTOR SIZES SHALL BE THE SAME AS THE HOMERUN FOR THE CIRCUIT. CONDUIT RUN BETWEEN DEVICES CONCEALED IN NON-ARCHITECTURALLY FINISHED AREAS OR UNDER FLOOR SLAB. CONDUIT AND CONDUCTOR SIZES SHALL BE THE SAME AS THE HOMERUN FOR THE CIRCUIT. CIRCUIT HASH MARKS (WHEN INDICATED); LONG, SHORT, SINGLE DOT, AND DOUBLE DOT REPRESENT PHASE, NEUTRAL, EQUIPMENT GROUND, AND ISOLATED EQUIPMENT GROUND, RESPECTIVELY. X REPRESENTS CONDUCTOR SIZE OTHER THAN #12 IN 3/4" CONDUIT. CIRCUIT CONTINUATION CONDUIT STUBBED OUT AND CAPPED CORD AND PLUG CONNECTION CONDUIT TAG OR CIRCUIT NUMBER - WIRE AND CONDUIT SIZE AS SPECIFIED IN CIRCUIT SCHEDULE ON THE SHEETS GROUND CABLE GROUND ROD CEILING/PENDANT/BOLLARD MOUNTED LUMINAIRE, LAMP TYPE AS SPECIFIED CEILING/PENDANT/BOLLARD MOUNTED LUMINAIRE, LAMP TYPE AS SPECIFIED, EMERGENCY (INTERNAL OR EXTERNAL POWER SOURCE AS INDICATED) WALL MOUNTED LUMINAIRE, LAMP TYPE AS SPECIFIED WALL MOUNTED LUMINAIRE, LAMP TYPE AS SPECIFIED, EMERGENCY (INTERNAL OR EXTERNAL POWER SOURCE AS INDICATED) WALL MOUNTED FLOOD LUMINAIRE, LAMP TYPE AS SPECIFIED POLE/STANCHION MOUNTED LUMINAIRE, LAMP TYPE AS SPECIFIED POLE/STANCHION MOUNTED LUMINAIRE, LAMP TYPE AS SPECIFIED, EMERGENCY (INTERNAL OR EXTERNAL POWER SOURCE AS INDICATED) POLE/STANCHION MOUNTED FLOOR LUMINAIRE, LAMP TYPE AS SPECIFIED CEILING/PENDANT MOUNTED LUMINAIRE, LAMP TYPE AS SPECIFIED WALL MOUNTED LUMINAIRE, LAMP TYPE AS SPECIFIED CEILING/PENDANT MOUNTED LUMINAIRE, LAMP TYPE AS SPECIFIED, ALL OR PARTIAL EMERGENCY (INTERNAL OR EXTERNAL POWER SOURCE AS INDICATED) WALL MOUNTED LUMINAIRE, LAMP TYPE AS SPECIFIED, ALL OR PARTIAL EMERGENCY (INTERNAL OR EXTERNAL POWER SOURCE AS INDICATED) EMERGENCY LIGHT, NUMBER OF ATTACHED HEADS AS SHOWN EMERGENCY LIGHT, REMOTE MOUNTED HEAD DOUBLE-FACED CEILING OR WALL MOUNTED EXIT LIGHT; DIRECTIONAL ARROWS (IF REQUIRED) AS INDICATED ON PLANS SINGLE-FACED CEILING OR WALL MOUNTED EXIT LIGHT; DIRECTIONAL ARROWS (IF REQUIRED) AS INDICATED ON PLANS LIGHTING FIXTURE SUBSCRIPTS X - INDICATES LUMINAIRE TYPE PER LUMINAIRE SCHEDULE Y - INDICATES CIRCUIT NUMBER FROM PANELBOARD Z - INDICATES CONTROLLING SWITCH (IF REQUIRED) NL - NIGHT LIGHT UNSWITCHED ROOM/AREA LIGHTING CONTROL TYPE, SEE LIGHTING CONTROL SCHEDULE FOR REQUIREMENTS LOW VOLTAGE DIGITAL WALL SWITCH, NUMBER INDICATES QUANTITY OF PUSH BUTTONS PER SINGLE GANG PLATE. LETTER INDICATES CONTROL ZONE WHEN SHOWN	 WALL SWITCH SUBSCRIPTS X - INDICATES TYPE NONE - SINGLE POLE 2 - DOUBLE POLE 3 - THREE-WAY 4 - FOUR-WAY K - KEY SWITCH P - PILOT LIGHT L - LIGHTED HANDLE DM - DIMMING MC - MOMENTARY CONTACT T - TIMER Y - INDICATES CONTROLLING SWITCH (IF REQUIRED) MANUAL MOTOR STARTER SUBSCRIPTS X - INDICATES TYPE HP - HORSEPOWER RATED TE - HORSEPOWER RATED WITH FT - THERMAL ELEMENT HORSEPOWER RATED WITH FUSELTRON FUSE Y - INDICATES SWITCH TYPE NONE - TOGGLE SWITCH TYPE R - ROTARY SWITCH TYPE PHOTOCELL TIME CLOCK LIGHTING CONTROL OCCUPANCY SENSOR, WALL MOUNTED, X INDICATES SPECIFIC TYPE AS SPECIFIED LIGHTING CONTROL OCCUPANCY SENSOR, CEILING MOUNTED, X INDICATES SPECIFIC TYPE AS SPECIFIED	 WALL MOUNTED TELEPHONE OUTLET WALL MOUNTED DATA OUTLET WALL MOUNTED COMBINATION TELEPHONE AND DATA OUTLET RECESSED FLOOR MOUNTED TELEPHONE OUTLET RECESSED FLOOR MOUNTED DATA OUTLET RECESSED FLOOR MOUNTED COMBINATION TELEPHONE AND DATA OUTLET AUDIO/VISUAL SYMBOLOGY TELEVISION OUTLET CEILING MOUNT SPEAKER WALL MOUNT SPEAKER SPEAKER SUBSCRIPTS X - INDICATES HEIGHT HORN TYPE TRANSDUCER VOLUME CONTROL HEAD END EQUIPMENT FLOOR MOUNTED MICROPHONE JACK WALL MOUNTED MICROPHONE JACK SECURITY SYMBOLOGY DOOR POSITION SWITCH COMBINATION ELECTRIC DOOR STRIKE AND POSITION SWITCH PROXIMITY CARD READER PROXIMITY CARD READER WITH KEYPAD DUAL TECHNOLOGY MOTION DETECTOR REQUEST TO EXIT MOTION DETECTOR REQUEST TO EXIT PUSH BUTTON GLASS BREAK DETECTOR CCTV CAMERA PTZ - PAN/TILT/ZOOM WHEN INDICATED SECURITY EQUIPMENT CABINET REMOTE KEYPAD/CONTROL STATION EMERGENCY ALARM SYMBOLOGY ALARM BELL ALARM HORN ALARM FLASHING LIGHT ALARM BELL AND FLASHING LIGHT COMBINATION UNIT ALARM HORN AND FLASHING LIGHT COMBINATION UNIT PUSHBUTTON OR PULLSTATION	 EXTERIOR PAD MOUNTED TRANSFORMER POLE - MOUNTED TRANSFORMER ELECTRICAL HANDHOLE OR MANHOLE X - INDICATES SEQUENCE NUMBER Y - MHX OR RHX POLE/STANCHION MOUNTED FLOOD LUMINAIRE, LAMP TYPE AS SPECIFIED POLE MOUNTED AREA OR ROADWAY LUMINAIRE, LAMP TYPE AS SPECIFIED HIGH MAST LIGHTING, NUMBER OF LUMINAIRES AS SPECIFIED LIGHTING FIXTURE SUBSCRIPTS X - INDICATES LUMINAIRE TYPE PER LUMINAIRE SCHEDULE Y - INDICATES CIRCUIT NUMBER FROM PANELBOARD POWER POLE DOWNGUY UNDERGROUND (UNO) ELECTRICAL AND COMMUNICATION SYSTEMS PATHWAY OVERHEAD ELECTRICAL AND COMMUNICATION SYSTEMS PATHWAY CONTROL SYMBOLOGY ELECTRICAL CONNECTION NO ELECTRICAL CONNECTION SOLENOID VALVE CONTROL/RELAY COIL: X-INDICATES TYPE Y-INDICATES LOOP NUMBER, WHEN USED TYPE CR-CONTROL RELAY PC-PHOTOCELL DP-DEFINITE PURPOSE IM-MOTOR STARTER TC-TIME CLOCK LC-LIGHTING CONTACTOR TR-TIMING RELAY NORMALLY OPEN CONTACT (N.O.) NORMALLY CLOSED CONTACT (N.C.) MICROPROCESSOR (PLC, RTU, ETC.) OUTPUT MICROPROCESSOR (PLC, RTU, ETC.) INPUT FIELD WIRING EXTERNAL TO CONTROL PANEL NORMALLY OPEN TIME DELAY RELAY CONTACT WITH TIME DELAY ON CLOSING AFTER COIL IS ENERGIZED NORMALLY CLOSED TIME DELAY RELAY CONTACT WITH TIME DELAY ON OPENING AFTER COIL IS ENERGIZED NORMALLY OPEN TIME DELAY RELAY CONTACT WITH TIME DELAY ON OPENING AFTER COIL IS DE-ENERGIZED NORMALLY CLOSED TIME DELAY RELAY CONTACT WITH TIME DELAY ON CLOSING AFTER COIL IS DE-ENERGIZED NORMALLY OPEN TEMPERATURE SWITCH; CLOSE ON RISING TEMPERATURE NORMALLY CLOSED TEMPERATURE SWITCH; OPEN ON RISING TEMPERATURE NORMALLY OPEN FLOW SWITCH; CLOSE ON INCREASING FLOW NORMALLY CLOSED FLOW SWITCH; OPEN ON INCREASING FLOW NORMALLY OPEN LEVEL SWITCH, CLOSE ON RISING LEVEL NORMALLY CLOSED LEVEL SWITCH, OPEN ON RISING LEVEL NORMALLY OPEN PRESSURE SWITCH, CLOSE ON INCREASING PRESSURE NORMALLY CLOSED PRESSURE SWITCH, OPEN ON INCREASING PRESSURE NORMALLY OPEN LIMIT SWITCH, CLOSE ON REACHING LIMIT NORMALLY CLOSED LIMIT SWITCH, OPEN ON REACHING LIMIT	 3 POSITION SELECTOR SWITCH, MAINTAINED CONTACTS; UNLESS OTHERWISE NOTED, 2-POSITION SIMILAR NORMALLY OPEN PUSHBUTTON, MOMENTARY CONTACT UNLESS OTHERWISE NOTED NORMALLY CLOSED PUSHBUTTON, MOMENTARY CONTACT UNLESS OTHERWISE NOTED INDICATING LIGHT: X INDICATES LENS COLOR PUSH TO TEST INDICATING LIGHT: X INDICATES LENS COLOR LENS COLORS R - RED Y - YELLOW G - GREEN W - WHITE B - BLUE A - AMBER THERMAL OVERLOAD ELEMENT THERMAL OVERLOAD RELAY CONTACT. WHEN SHOWN X INDICATES QUANTITY. CONTROL POWER TRANSFORMER (CPT) RUN TIME METER	<p>1. THIS IS A STANDARD ELECTRICAL SYMBOLOGY SHEET. NOT ALL SYMBOLS MAY BE USED ON THIS PROJECT.</p> <p>2. SCREENING OR SHADING OF WORK IS USED TO INDICATE EXISTING COMPONENTS OR TO DE-EMPHASIZE PROPOSED IMPROVEMENTS TO HIGHLIGHT SELECTED TRADE WORK. REFER TO CONTEXT OF EACH SHEET FOR USAGE.</p> <p>3. SEE P&ID LEGEND SHEET FOR PROJECT SPECIFIC EQUIPMENT SYMBOLS, EQUIPMENT ABBREVIATIONS, AND PIPING SYSTEM ABBREVIATIONS.</p>

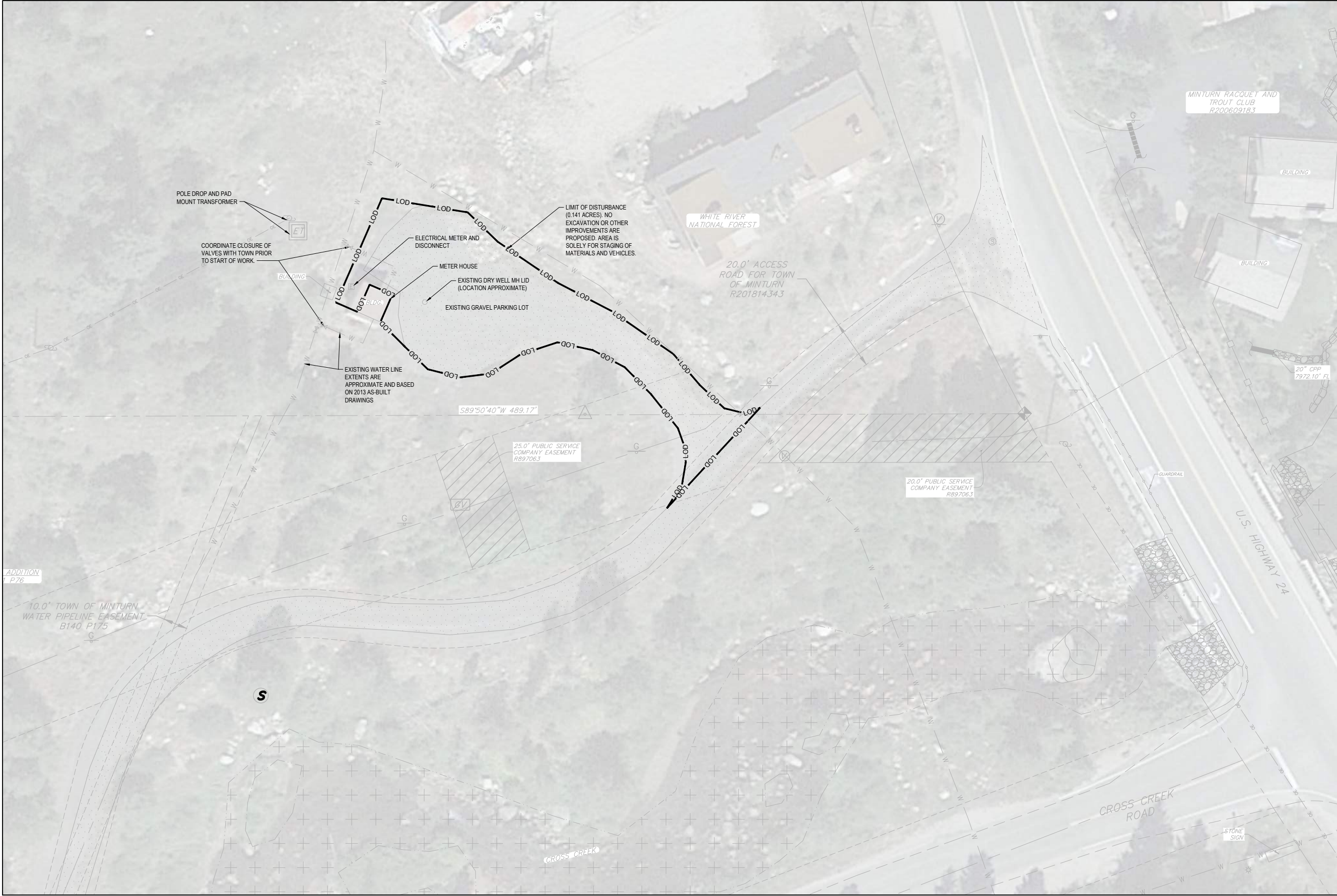
- A. FLOW PATH IS SHOWN AND WITHOUT REPRESENTATION OF THE ACTUAL PIPE CONFIGURATION.
- B. STRUCTURE LIMITS (TANKS, BUILDINGS) IS EXAGGERATED. ELEVATIONS OF HYDRAULIC GRADE LINE AND PIPE (WHERE LABELED) IS ACCURATE.
- C. MAXIMUM FLOW RATE OF 500 GPM ESTABLISHED BASED ON HISTORICAL USE DATA.



C:\USER\PEAZDC\ACDC\CS\H0R10348601_MIN\TURN_WTP_DESIGN_2022\AC\PROJECT FILES\00 - METER HOUSE\ SHEETS\00D-601.DWG
10/17/2023 8:27:10 AM

C:\Users\EPAC\Documents\HDR\10348601_Minturn_WTP_Design_2022\ACCP\PROJECT FILES\00 - METER HOUSE\01C-101.DWG
10/17/2023 8:27:10 AM

C:\Users\EPAC\Documents\HDR\10348601_Minturn_WTP_Design_2022\ACCP\PROJECT FILES\00 - METER HOUSE\01C-101.DWG, 6/25/2024 9:22:00 AM, EPAC

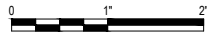


A	07/2024	ISSUED FOR PROJECT BID
ISSUE	DATE	DESCRIPTION

PROJECT MANAGER	JAROD C. LIMKE
ELECTRICAL	J. HUCKENPAHLER
I&C	C. OPPEGARD
CIVIL	M. JARRETT
DRAWN BY	M. JARRETT
PROJECT NUMBER	10348601



TOWN OF MINTURN
METER HOUSE
IMPROVEMENTS



SHEET
01C-101

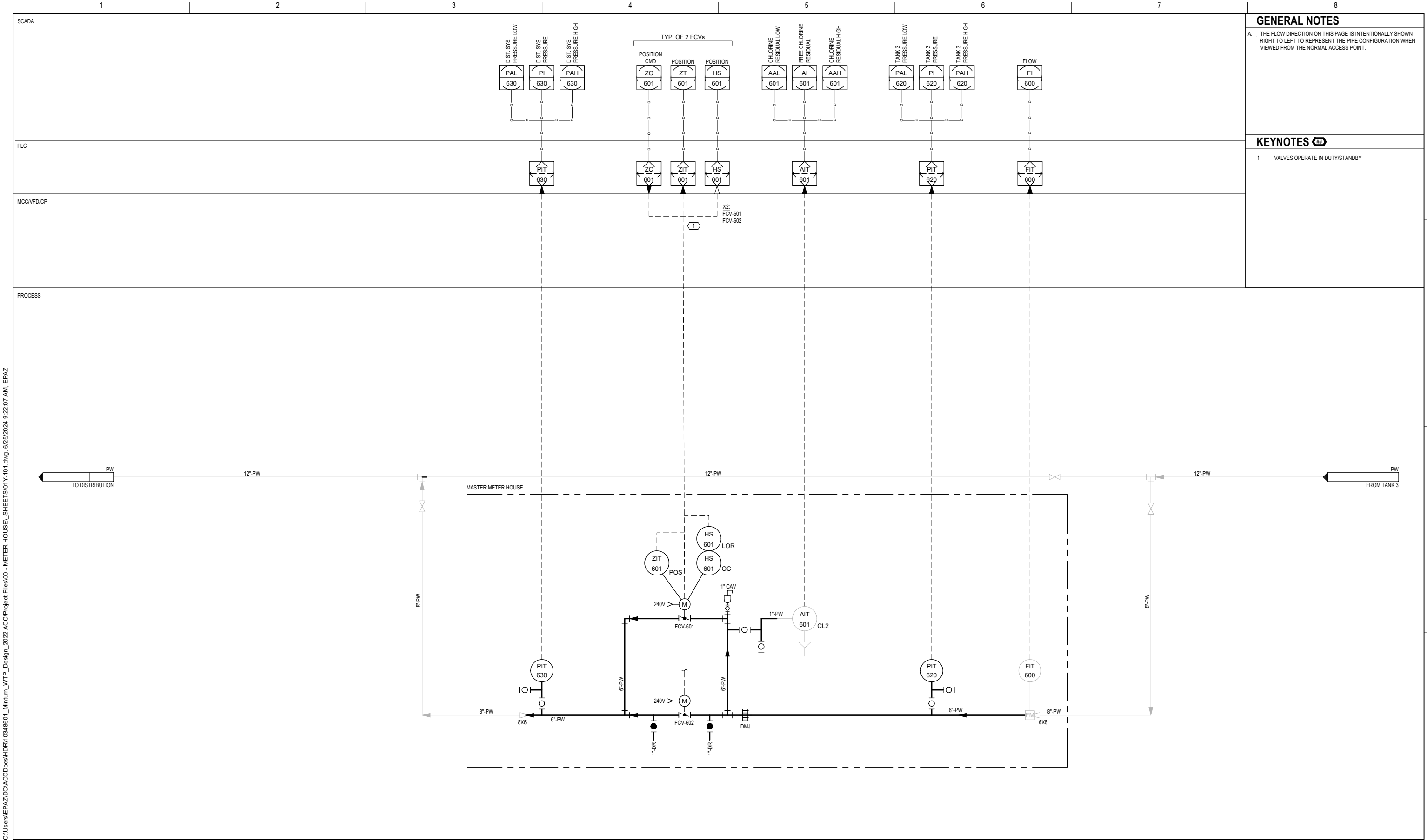
SCALE 1"=20'

FILENAME 01C-101.DWG

01C-101

C:\Users\EPAZ\Documents\HDR\10348601_MINTURN_WTP_DESIGN_2022\ACCPROJECT FILES\00 - METER HOUSE\ SHEETS\01Y-101.DWG 6/25/2024 9:22:07 AM EPAPZ 10/17/2023 8:27:10 AM

C:\Users\EPAZ\Documents\HDR\10348601_MINTURN_WTP_DESIGN_2022\ACCPROJECT FILES\00 - METER HOUSE\ SHEETS\01Y-101.DWG 6/25/2024 9:22:07 AM EPAPZ



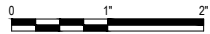
A	07/2024	ISSUED FOR PROJECT BID
ISSUE	DATE	DESCRIPTION

PROJECT MANAGER	JAROD C. LIMKE
ELECTRICAL	M. LARSON
I&C	M. JARRETT
CIVIL	C. MULDERICK
	SCHUMACHER
	HUCKENPAHLER
	C. OPPEGARD
DRAWN BY	N. LYNCH
PROJECT NUMBER	10348601



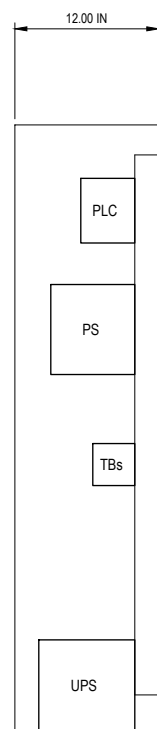
TOWN OF MINTURN

METER HOUSE IMPROVEMENTS



FILENAME	01Y-101.DWG
SCALE	NOT TO SCALE

SHEET
01Y-101



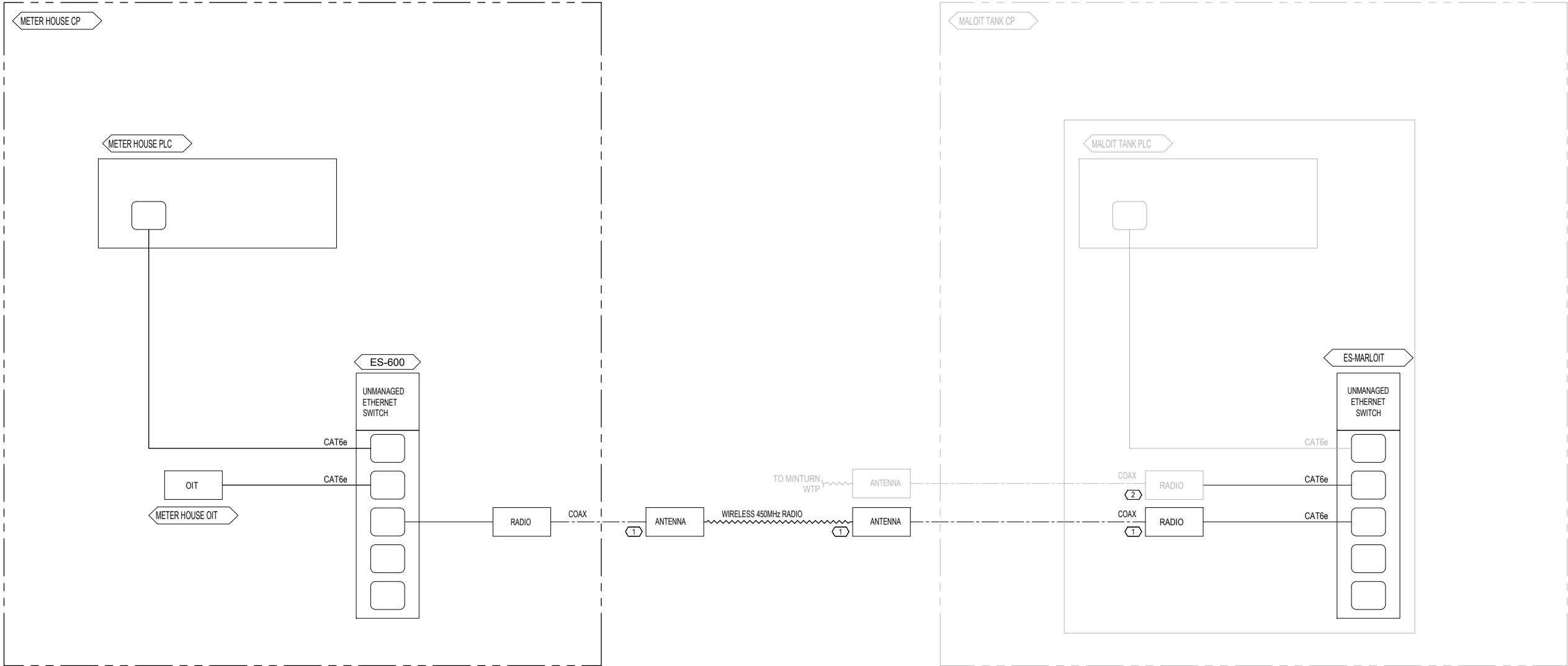
2 SIDE INTERIOR ELEVATION
NO SCALE

[illegible]

A. SCHEMATIC IS DIAGRAMMATIC. ACTUAL DEVICES & WIRES TO BE INSTALLED PER MANUFACTURES INSTRUCTIONS.

C:\Users\EPAZ\Documents\HDR\10348601_MINTURN_WTP_DESIGN_2022\ACCPROJECT FILES\00 - METER HOUSE\ SHEETS\01Y-602.DWG
10/17/2023 8:27:10 AM

C:\Users\EPAZ\Documents\HDR\10348601_MINTURN_WTP_DESIGN_2022\ACCPROJECT FILES\00 - METER HOUSE\ SHEETS\01Y-602.DWG



GENERAL NOTES

A. CONTRACTOR TO FIELD-VERIFY EXISTING EQUIPMENT LOCATIONS.

KEYNOTES

- COORDINATE INSTALLATION LOCATION WITH OWNER.
- EXISTING RADIO IS MOTOROLA COM750 OPERATING AT 450 MHz.

OIT - OPERATOR INTERFACE TERMINAL.

LEGEND

- CAT6 ETHERNET
- COAX
- WIRELESS RADIO



ISSUE	DATE	DESCRIPTION
A	07/2024	ISSUED FOR PROJECT BID

PROJECT MANAGER JAROD C. LIMKE

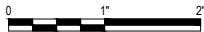
ELECTRICAL	M. LARSON
I&C	M. JARRETT
CIVIL	C. MULDERICK
	SCHUMACHER
	HUCKENPAHLER
	C. OPPEGARD
DRAWN BY	N. LYNCH
PROJECT NUMBER	10348601



TOWN OF MINTURN

METER HOUSE
IMPROVEMENTS

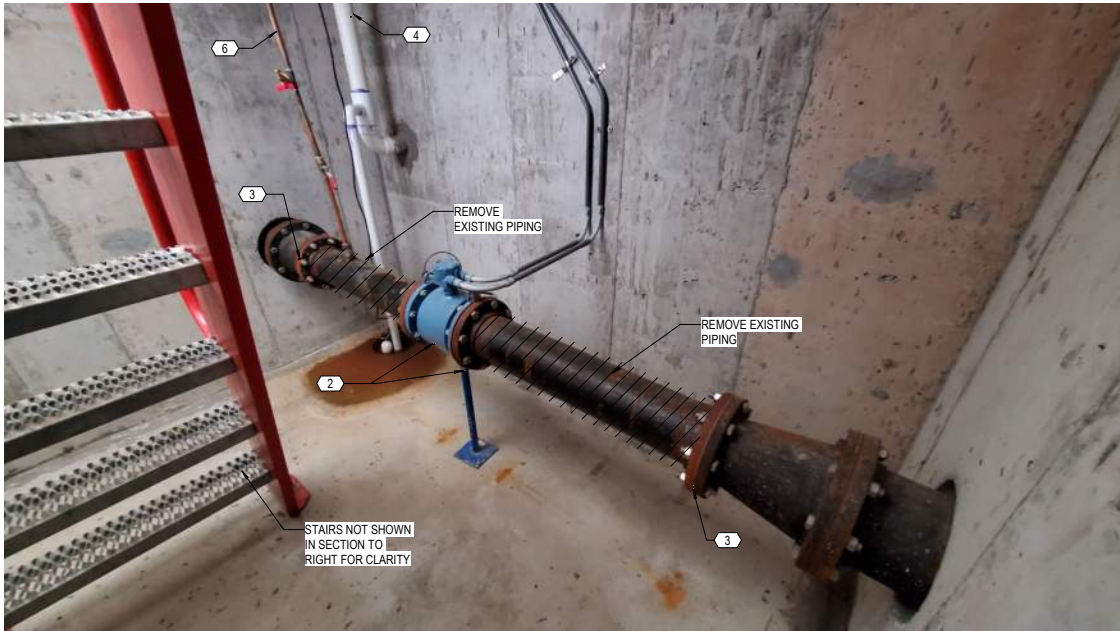
COMMUNICATIONS AND NETWORK DIAGRAM



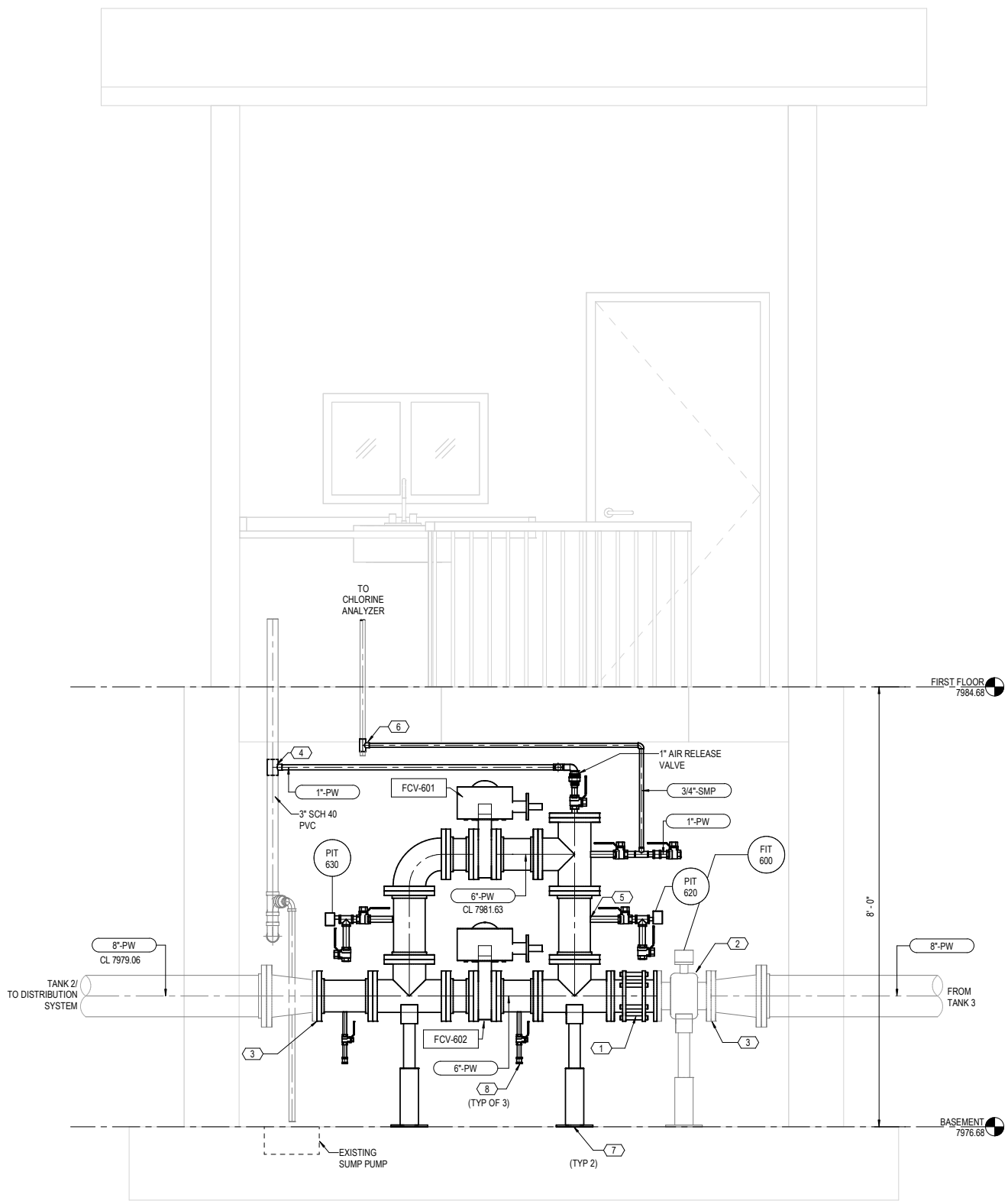
FILENAME 01Y-602.DWG
SCALE NOT TO SCALE

SHEET

01Y-602



1 PHOTO - EXISTING CONDITIONS
NOT TO SCALE



A SECTION - LOOKING SOUTH, FROM POV OF TYPICAL ACCESS
3/4\"/>

GENERAL NOTES

- SWAB DISINFECT ALL PIPE.
- COORDINATE WITH OWNER FOR CLOSURE OF BURIED VALVES OUTSIDE OF STRUCTURE TO ISOLATE PIPE SYSTEM.
- PROVIDE MEANS FOR KEEPING METER HOUSE BASEMENT DRY AND FREE OF STANDING WATER

KEYNOTES

- DISMANTLING JOINT.
- REMOVE AND RELOCATE EXISTING 6\"/>



A	07/2024	ISSUED FOR PROJECT BID
ISSUE	DATE	DESCRIPTION

PROJECT MANAGER	JAROD C. LIMKE
ELECTRICAL	J. HUCKENPAHLER
I&C	C. OPPEGARD
CIVIL	M. JARRETT
DRAWN BY	E. PAZ
PROJECT NUMBER	10348601



TOWN OF MINTURN

METER HOUSE IMPROVEMENTS

METER HOUSE PROCESS PLAN AND SECTION



FILENAME
SCALE As indicated

SHEET
01D-101

Autodesk Docs://10348601_Minturn_WTP_Design_2022_ACC/10348601_01E Meter House.rvt
6/25/2024 9:24:38 AM



A	07/2024	ISSUED FOR PROJECT BID
ISSUE	DATE	DESCRIPTION

PROJECT MANAGER	JAROD C. LIMKE
ELECTRICAL	J. HUCKENPAHLER
I&C	C. OPPEGARD
CIVIL	M. JARRETT
DRAWN BY	E. PAZ
PROJECT NUMBER	10348601



TOWN OF MINTURN

METER HOUSE
IMPROVEMENTS



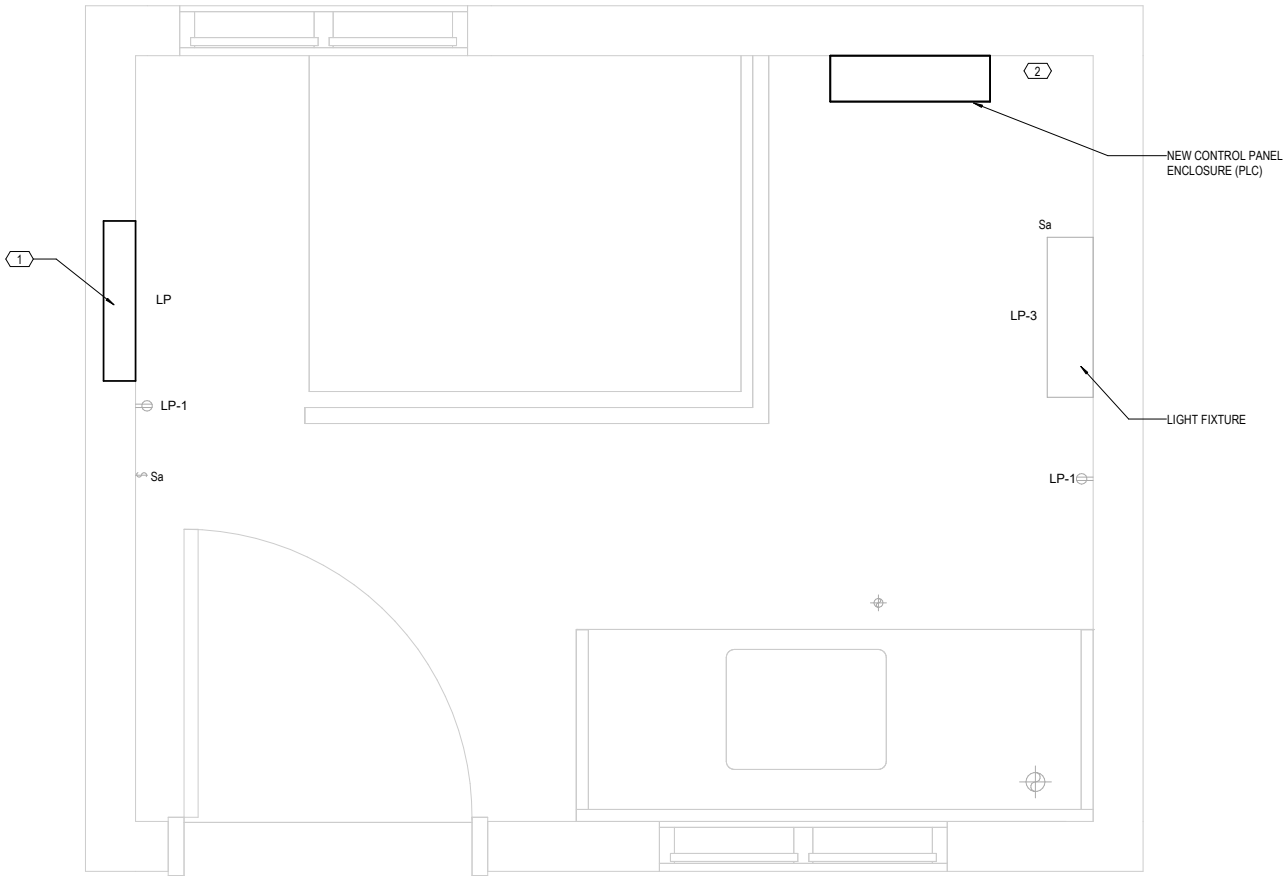
FILENAME
SCALE 1" = 1'-0"

SHEET
01E-101



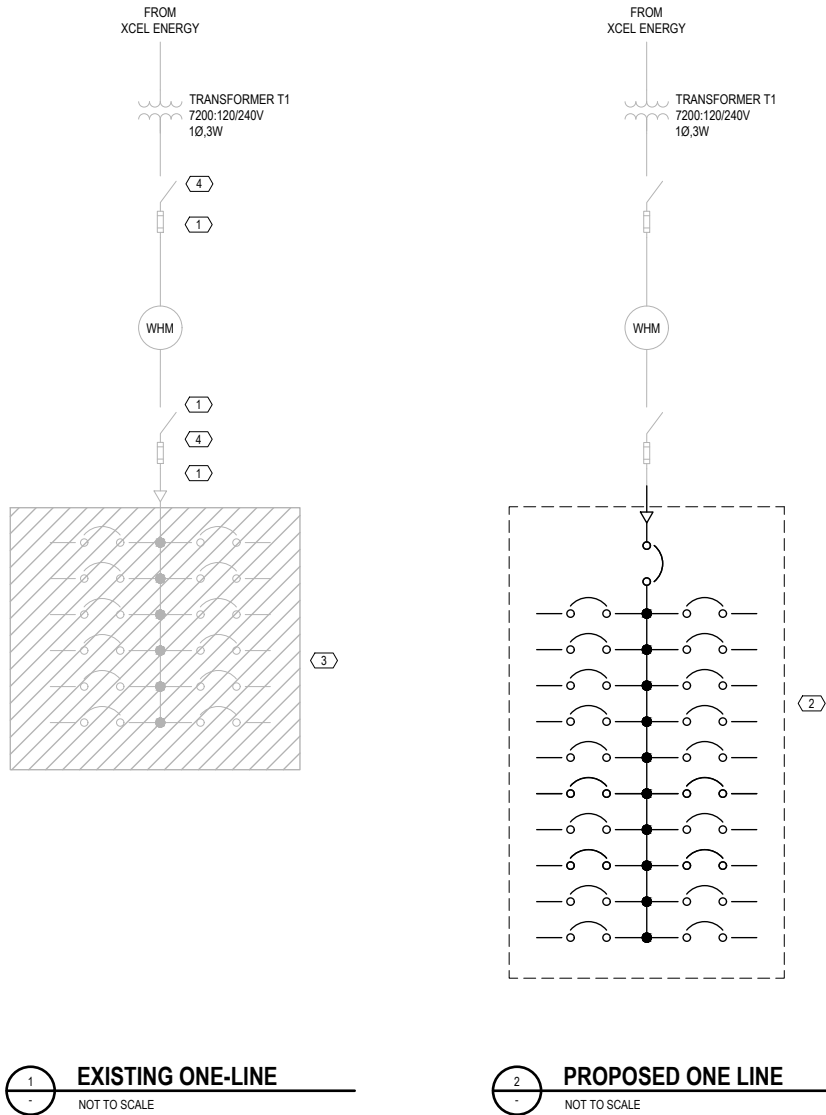
KEYNOTES

- 1 REMOVE AND REPLACE EXISTING LP PER ONE-LINE DRAWING.
- 2 RE-ROUTE EXISTING EXHAUST VENT TO CLEAR NEW PLC CABINET.



C:\Users\EPAZ\Documents\HDR\10348601_MINTURN_WTP_DESIGN_2022\ACCPROJECT FILES\00 - METER HOUSE\ SHEETS\01E-601.DWG
10/17/2023 8:27:10 AM

C:\Users\EPAZ\Documents\HDR\10348601_MINTURN_WTP_DESIGN_2022\ACCPROJECT FILES\00 - METER HOUSE\ SHEETS\01E-601.DWG
10/17/2023 8:27:10 AM



PANELBOARD NO: LP																
VOLTAGE: 240/120				BUS RATING (A): 125				ENCLOSURE: NEMA 1								
PHASE: 1				MAIN OC DEVICE: 125/2				MOUNTING: FLUSH								
WIRE: 3+GND				INTERRUPTING RATING (KA): 10				LOCATION: UPSTAIRS METER HOUSE								
200% NEUTRAL: NO				SERVICE ENTRANCE LABEL: NO												
CKT NO.	CONNECTED LOAD (VA)					OCP					CONNECTED LOAD (VA)					CKT NO.
DESCRIPTION	LTS	REC	MECH	MISC	AMPS P	AMPS P	LTS	REC	MECH	MISC	DESCRIPTION	CKT NO.				
MAIN CB					125 2	A	125 2				MAIN CB	NO.				
						B										
1 RECEPTACLES		900			A	20 2			1,500		ELECTRIC UNIT HEAT	2				
3 LIGHTS	1,200				B				1,500			4				
5 SPARE					A	20 1						6				
7 PUMP				1,176	B		250			1,000	OLD SHED (GFI)	8				
9 VALVE 1 ACTUATOR				1,200	20 2	A	20 2			1,200	OLD SHED LIGHTS	10				
11				1,200	B					1,200	VALVE 2 ACTUATOR	12				
13 PLC				2,040	A	30 1					SPARE	14				
15 SPARE					B						SPARE	16				
17 SPARE					B						SPARE	18				
19 SPARE					B						SPARE	20				
SUMMARY																
	LTS	REC	MECH	MISC	SPARE	TOTAL					PHASE BALANCE					
CONNECTED LOAD (KVA)	1.5	0.9	3.0	9.0	—	##	240 LINE-TO-LINE VOLTS				PHASE A (KVA) 7.8					
DEMAND FACTOR	1.25	NEC	1.00	1.00	20%	—	60 CONNECTED AMPS				PHASE B (KVA) 6.5					
DESIGN LOAD (KVA)	1.8	0.9	3.0	9.0	2.9	##	73 DESIGN AMPS									

3 PANELBOARD SCHEDULE
NOT TO SCALE

KEYNOTES

- REPLACE ANY PORTIONS OF THE SERVICE LATERAL THAT ARE SMALLER THAN #1 AWG.
- REPLACE EXISTING PANELBOARD WITH NEW PANELBOARD PER THE SCHEDULE. RECONNECT ALL EXISTING LOADS TO NEW PANELBOARD AND ADD BRANCH CIRCUITS FOR NEW VALVES AS SHOWN ON THE PANELBOARD SCHEDULE
- EXISTING PANELBOARD WITH 12 BRANCH CIRCUITS. REPLACE WITH NEW PANELBOARD PER PANELBOARD SCHEDULE.
- UPGRADE DISCONNECT SWITCHES TO 200A IF NOT ALREADY RATED FOR 200A.



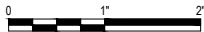
A			07/2024	ISSUED FOR PROJECT BID
ISSUE	DATE	DESCRIPTION		

PROJECT MANAGER		JAROD C. LIMKE
ELECTRICAL	HUCKENPAHLER	
I&C	C. OPPEGARD	
CIVIL	M. JARRETT	
DRAWN BY		J. LIMKE
PROJECT NUMBER		10348601



TOWN OF MINTURN
METER HOUSE
IMPROVEMENTS

ONE-LINE
AND PANELBOARD SCHEDULE



FILENAME 01E-601.DWG
SCALE NOT TO SCALE

SHEET
01E-601