

Design Review Application

9/17/2024 1:39:39 PM

Project Information

Please ensure you are familiar with the [Design Review Process Guide & Appendix B.II.A](#) prior to filling out an application.

Project Information

Is this a Minor or Major DRB Project?: Minor

Project Name: Cordova Siding

Street Address

Address Line 1: 701 Main Street

Address Line 2:

City: Minturn

State: Colorado

Zip: 81645

Zoning: Old Town Character area Residential Zone

Application Request: Siding

Applicant Information

Name: Andrew Candelaria

Mailing Address

Address Line 1: 6600 E hampden Ave

Address Line 2:

City: Denver

State: Colorado

Zip: 80224

Phone: (505) 492-9961

Email: acandelaria@dabella.us

Is the Property Owner different than the Applicant?: Yes

Property Owner Information

Name: Rodney & Rosa Cordova

Mailing Address

Address Line 1: 701 Main Street

Address Line 2:

City: Minturn

State: Colorado

Zip: 81645

Phone: (970) 827-5867

Email: Mrsrosa@comcast.net

Additional Information

Submittal Requirements (as applicable)

Lot Size:

of Stories:

Type of Residence: Single Family

Snow Storage (sq ft):

of Bedrooms:

Building Footprint (sq ft):

of On-site Parking Spaces:

Total Impervious Surfaces (sq ft):

Uploads

Submittal Checklist Requirements (as applicable)

Letter of Intent

What is the purpose of the project including;

- Relevant Background
- Current Status of the Site
- All Proposed Uses and Structures
- How the Proposal Differs from what already exists
- Information regarding Easements or Dedicated Tracts, etc.

Letter of Intent: [Letter of Intent.docx](#)

Vicinity Map

Approval Page

Comments:

Applicant Signature

I declare under penalty of perjury in the second degree that the statements made in the above application are true and complete to the best of my knowledge.

Signature: Andrew Candelaria

Date: 09-17-2024

Letter of Intent

Whole House re-side, Installing James Hardie siding board.

Project is not started.

Single Family,

Existing siding damaged Vinyl white

New Siding James Hardie Board Abington Gray, with Artic White trim.



Proudly offers these ColorPlus® Technology finishes



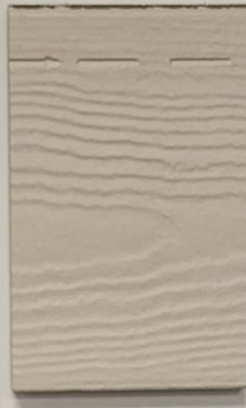
Arctic White



Aged Pewter



Boothbay Blue



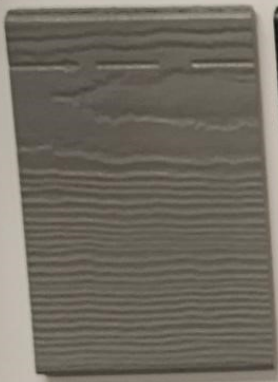
Cobble Stone



Countrylane Red



Evening Blue



Gray Slate



Iron Gray



Evening Blue



Khaki Brown



Light Mist



Monterey Taupe



Mountain Sage



Navajo Beige



Night Gray



Pearl Gray



Rich Espresso



Timber Bark



Quality Begins at Home

Proudly offers these ColorPlus® Technology finishes



Arctic White



Aged Pewter



Boothbay Blue



Cobble Stone



Countrylane Red



Evening Blue



Gray Slate



Night Gray



Evening Blue



Khaki Brown



Light Mist



Monterey Taupe



Mountain Sage



Navajo Beige



Night Gray



Pearl Gray



Rich Espresso



Timber Bark

© 2008 James Hardie Building Products Inc. All Rights Reserved. The JH and DaBella logos are registered trademarks of James Hardie Technology Limited. 10000-1-08



VIEW 3D MODEL



Areas	Siding	Other
Facades	1207 ft ²	-
Openings	155 ft ²	-
Trims*	96 ft ²	-
Unknown (no photos)*	8 ft ²	-
Total	1466 ft²	0 ft²

*Any trim or unknown material that touches siding is included in the 'Siding' column. If it does not touch siding, then it's included in the 'Other' column.

Openings	Siding	Other
Quantity	15	0
Tops Length	37' 8"	-
Sills Length	37' 8"	-
Sides Length	112' 4"	-
Total Perimeter	187' 9"	-

Corners	Siding	Other
Inside Qty	9	0
Inside Length	19' 5"	-
Outside Qty	7	0
Outside Length	40' 7"	-

Accessories	Siding	Other
Shutter Qty	0	0
Shutter Area	0 ft ²	0 ft ²
Vents Qty	0	0
Vents Area	0 ft ²	0 ft ²

Trim	Siding	Other
Level Starter	265' 11"	6' 2"
Sloped Trim	27' 7"	-
Vertical Trim	22' 4"	2' 6"

Roofline	Length	Avg. Depth	Soffit Area
Eaves Fascia	89' 1"	-	-
Level Frieze Board	78' 9"	2' 7"	255 ft ²
Rakes Fascia	119' 4"	-	-
Sloped Frieze Board	129' 7"	7"	66 ft ²

SIDING WASTE TOTALS

Siding & Trim Only*	Area	Squares
Zero Waste	1311 ft ²	13¼
+10%	1443 ft ²	14½
+18%	1547 ft ²	15½

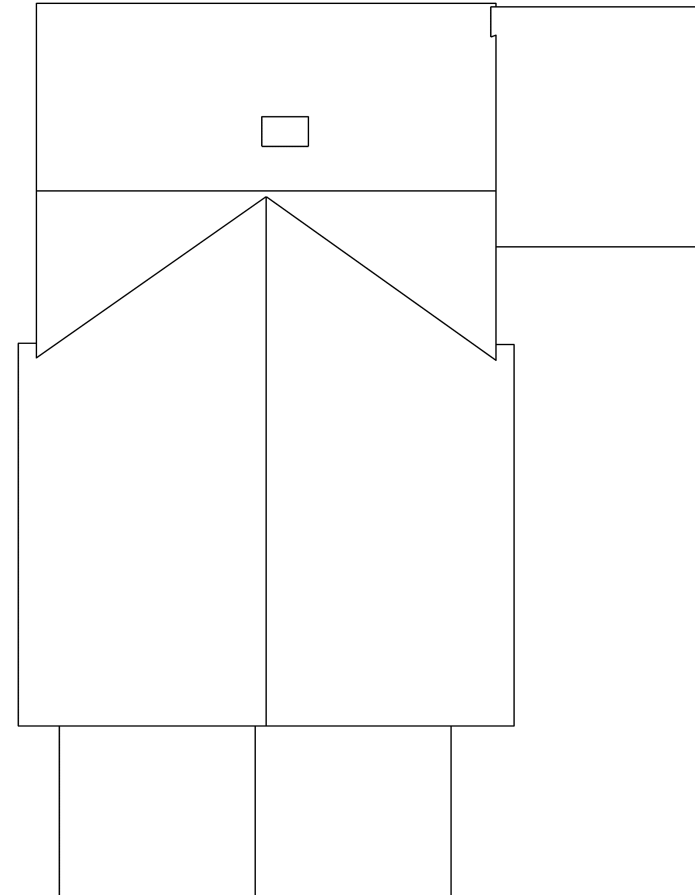
+ Openings < 20ft ²	Area	Squares
Zero Waste	1466 ft ²	14¾
+10%	1613 ft ²	16¼
+18%	1731 ft ²	17½

+ Openings < 33ft ²	Area	Squares
Zero Waste	1466 ft ²	14¾
+10%	1613 ft ²	16¼
+18%	1731 ft ²	17½

*The first three rows of the Siding Waste Factor table are calculated using the total ft² of siding facades, ft² of trim touching siding, and ft² of unknowns touching siding.

Roof	Area	Total	Length
Roof Facets	1296 ft ²	7	-
Ridges / Hips	-	3	56'
Valleys	-	3	30' 9"
Rakes	-	13	119' 4"
Eaves	-	7	89' 1"
Flashing	-	4	12'
Step Flashing	-	7	26' 6"
Drip Edge/Perimeter	-	-	208' 5"

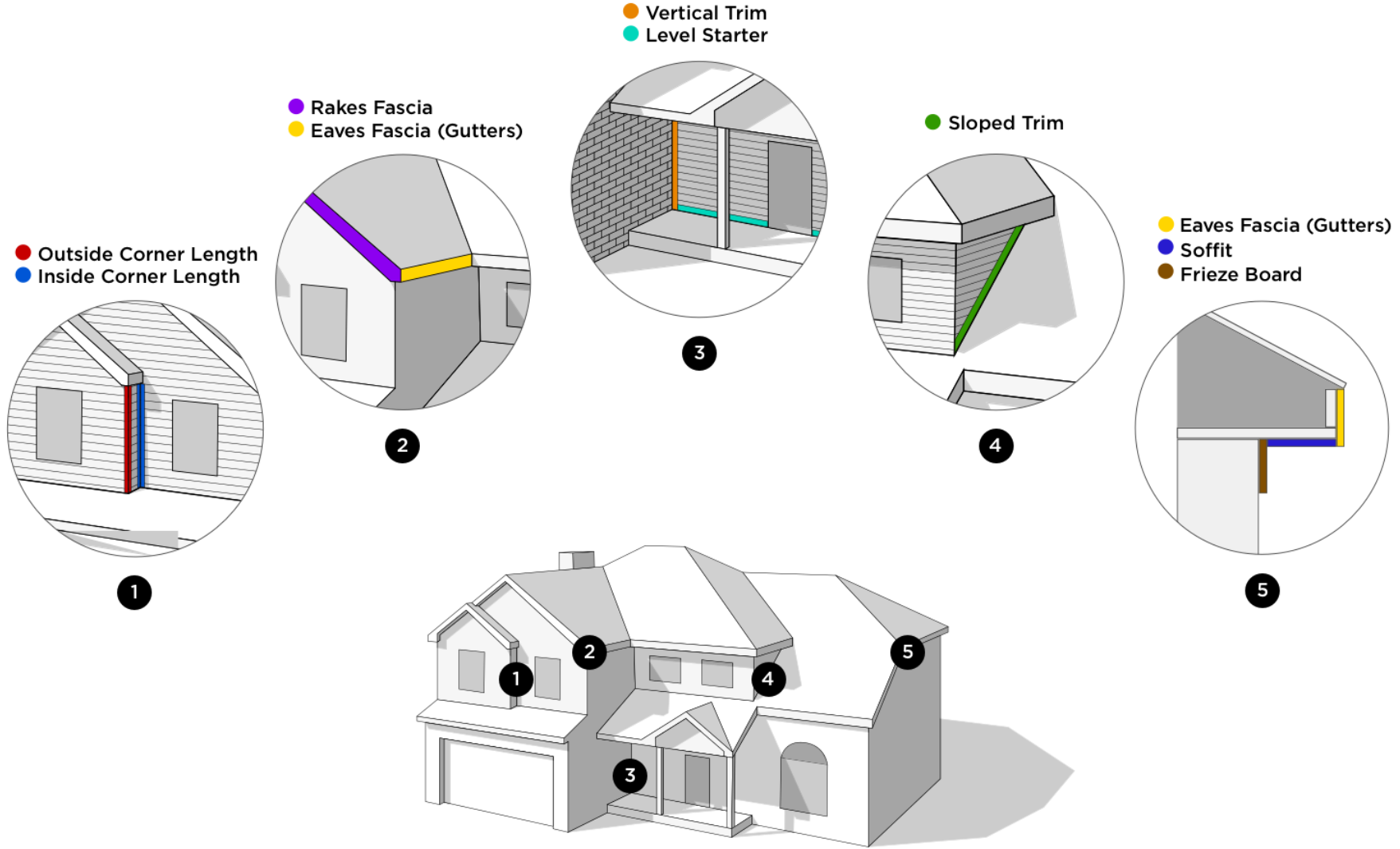
Roof Pitch*	Area	Percentage
8 / 12	597 ft ²	46.06%
11 / 12	381 ft ²	29.4%
7 / 12	194 ft ²	14.97%
4 / 12	124 ft ²	9.57%

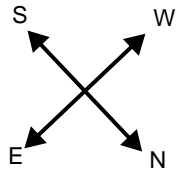


Example Waste Factor Calculations

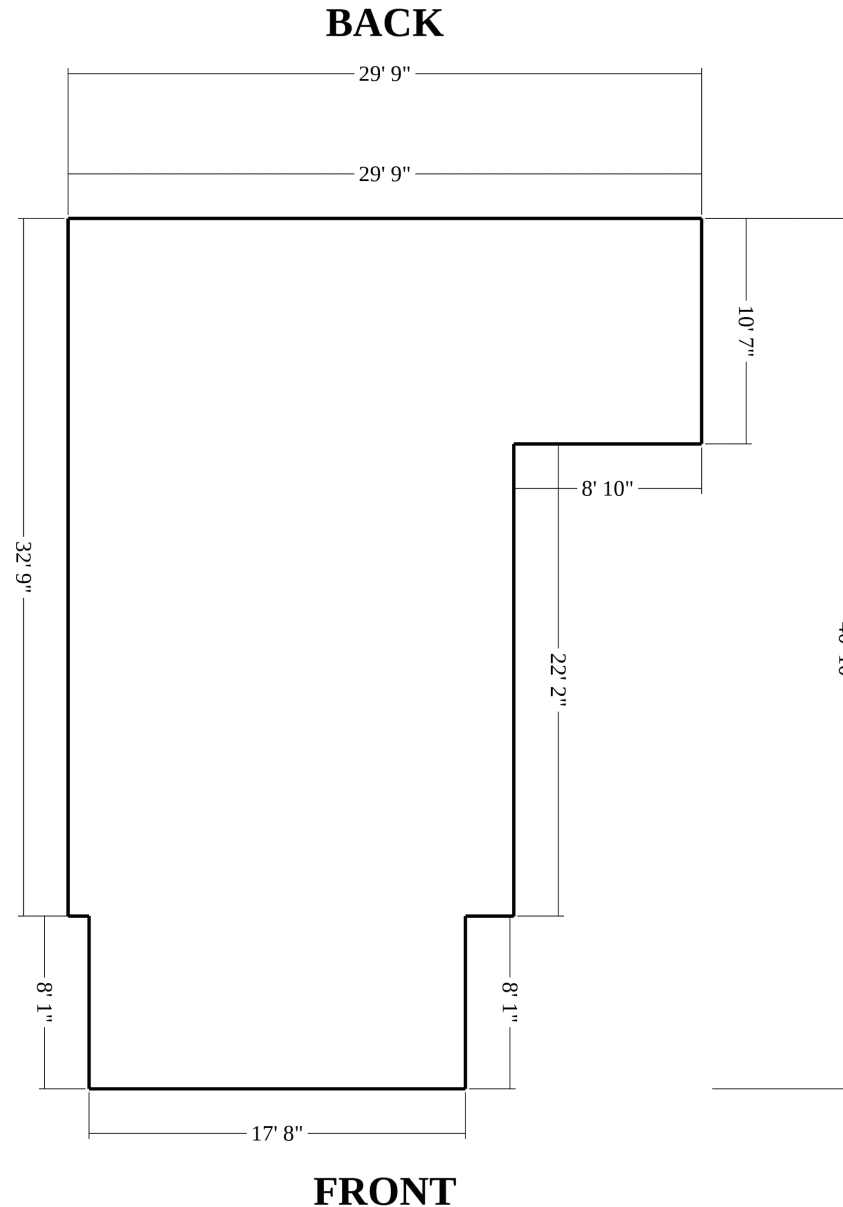
	Zero Waste	+5%	+10%	+15%	+20%
Area	1296 ft ²	1361 ft ²	1426 ft ²	1490 ft ²	1555 ft ²
Squares	13	13 ² / ₃	14 ¹ / ₃	15	15 ² / ₃

The table above provides the total roof area of a given property using waste percentages as noted. Please consider that area values and specific waste factors can be influenced by the size and complexity of the property, captured image quality, specific roofing techniques, and your own level of expertise. Additional square footage for Hip, Ridge, and Starter shingles are not included in this waste factor and will require additional materials. This table is only intended to make common waste calculations easier and should not be interpreted as recommendations.





Number of Stories: 1
Footprint Perimeter: 141' 1"
Footprint Area: 921 ft²

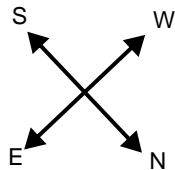




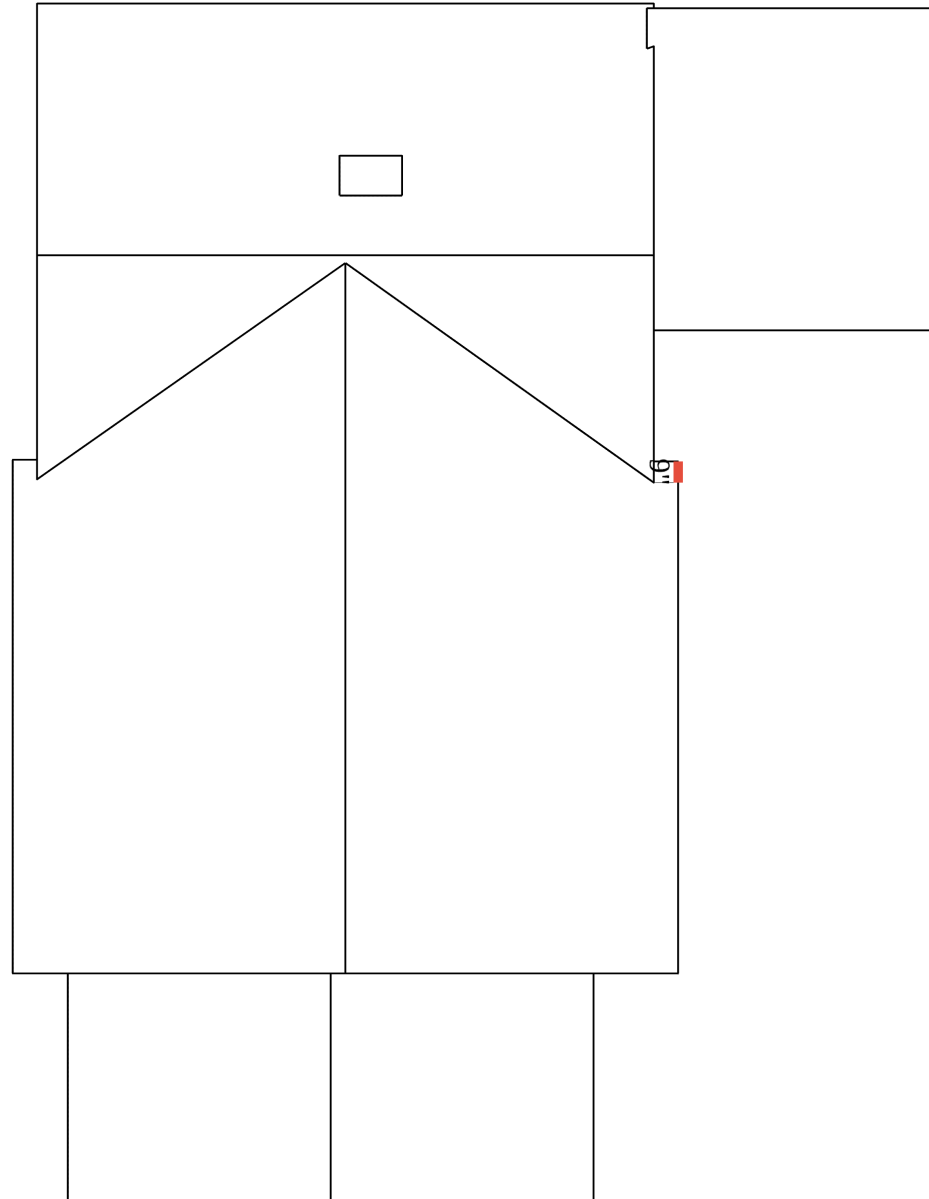
Siding Per Elevation

FRONT			RIGHT			LEFT			BACK		
SI-2	-	45 ft ²	SI-1	-	16 ft ²	SI-17	-	54 ft ²	SI-12	-	16 ft ²
SI-3	-	49 ft ²	SI-7	-	21 ft ²	SI-18	-	244 ft ²	SI-13	-	36 ft ²
SI-4	-	116 ft ²	SI-8	-	140 ft ²	SI-19	-	16 ft ²	SI-14	-	14 ft ²
SI-5	-	13 ft ²	SI-10	-	41 ft ²	SI-20	-	22 ft ²	SI-15	-	7 ft ²
SI-6	-	36 ft ²	SI-11	-	58 ft ²				SI-16	-	183 ft ²
SI-9	-	62 ft ²	SI-21	-	5 ft ²						
			SI-22	-	4 ft ²						
			SI-23	-	3 ft ²						
			SI-24	-	3 ft ²						
			SI-25	-	3 ft ²						
321 ft²			294 ft²			336 ft²			256 ft²		

Number of Stories: 1

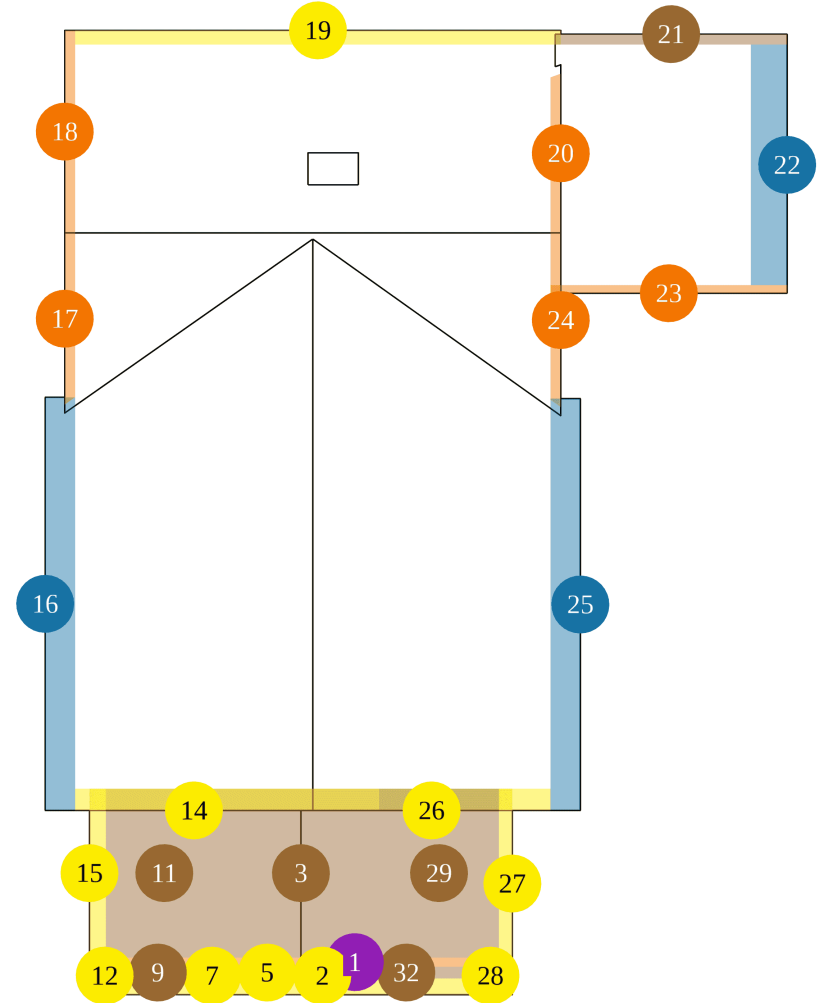


	Cornice Returns	Length	Count
■	Returns Story 1	1'	1
	Total	1'	1



Soffit Summary

Depth	Type	Count	Total Length	Total Area
1" - 6"	rakes	7	63' 2"	27 ft ²
	eaves	3	5' 4"	2 ft ²
6" - 12"	rakes	4	46' 7"	39 ft ²
	eaves	8	42' 3"	27 ft ²
18" - 24"	eaves	3	46' 10"	74 ft ²
24" - 48"	eaves	1	5"	1 ft ²
> 48"	eaves	6	23' 3"	151 ft ²
Totals			227' 10"	321 ft²

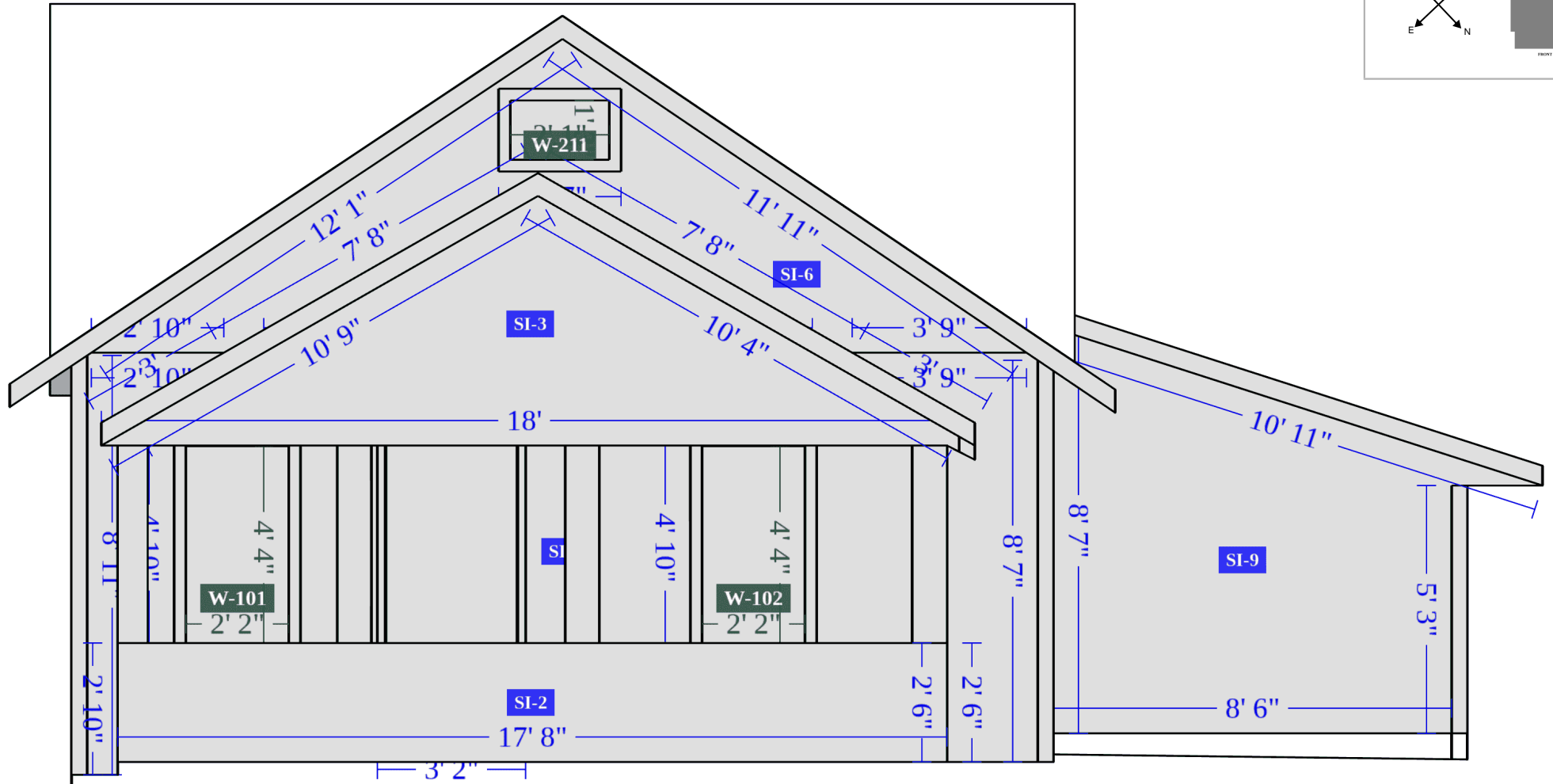
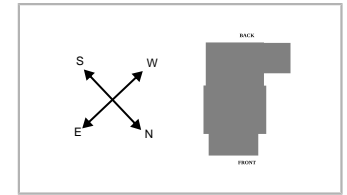


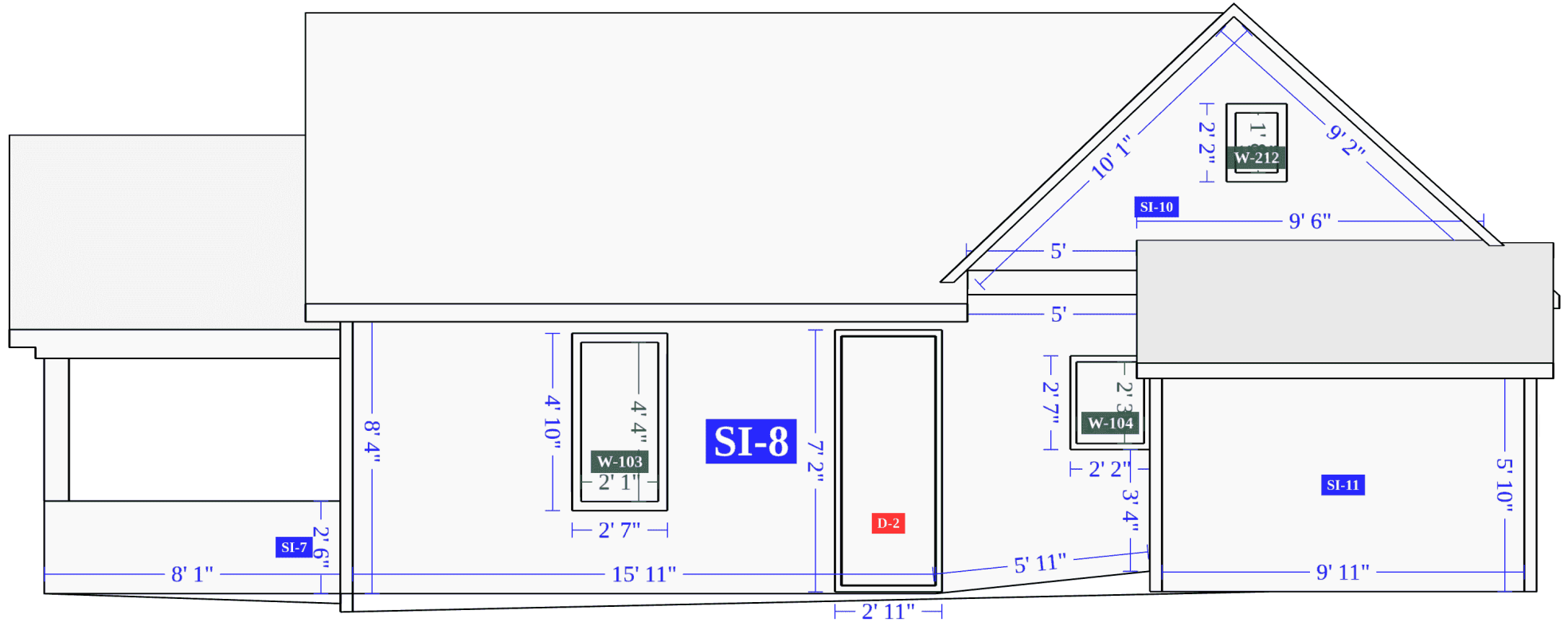
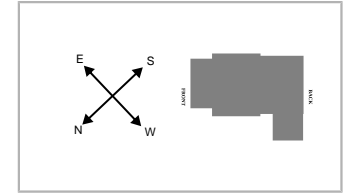
Soffit Breakdown

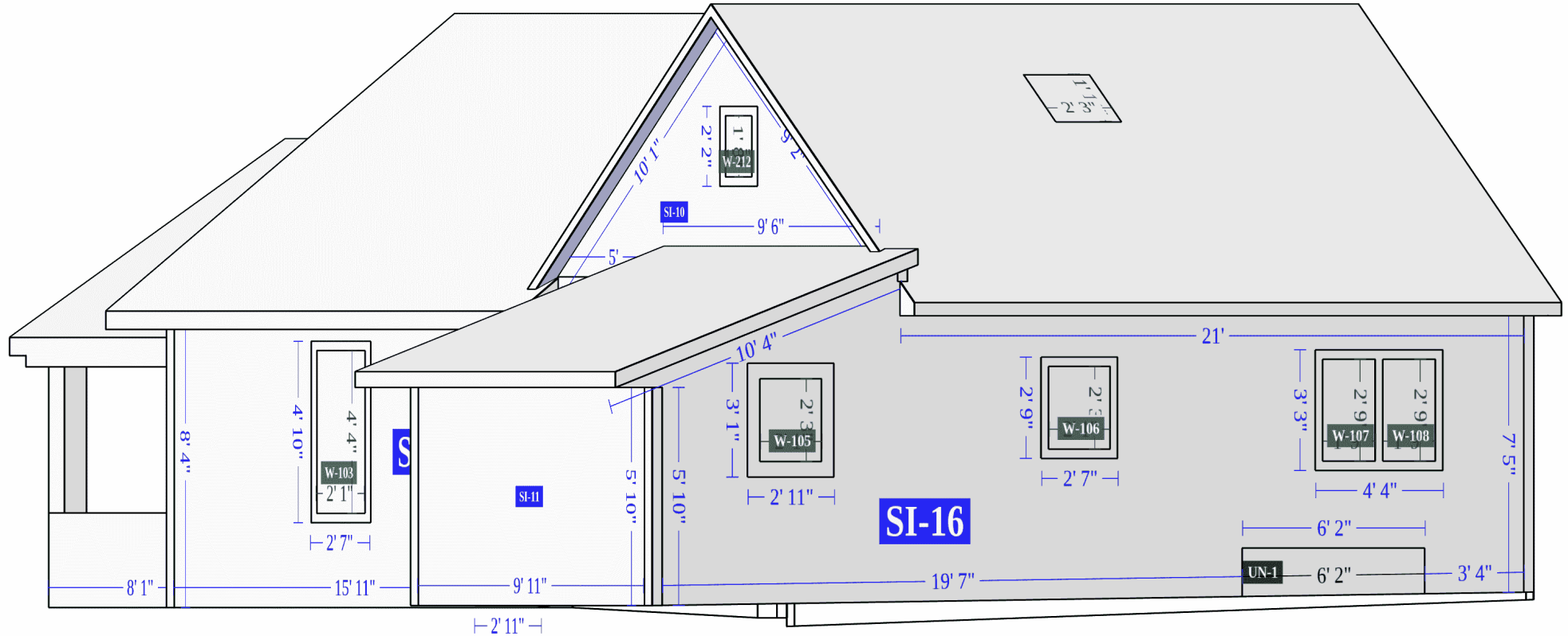
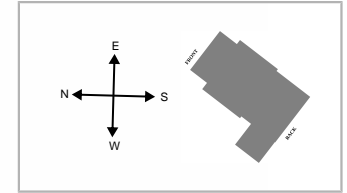
	num	Type	Depth	Length	Area	Pitch
●	1	eave	26"	5"	1 ft ²	7 / 12
●	2	eave	9"	3"	0 ft ²	7 / 12
●	3	eave	89"	6' 11"	51 ft ²	7 / 12
∅	4	eave	5"	4'	2 ft ²	7 / 12
●	5	eave	6"	4' 2"	2 ft ²	7 / 12
∅	6	eave	1"	5"	0 ft ²	7 / 12
●	7	eave	9"	3"	0 ft ²	7 / 12
∕	8	rake	9"	10' 9"	8 ft ²	7 / 12
●	9	eave	48"	6"	2 ft ²	7 / 12
∅	10	rake	5"	4' 8"	2 ft ²	7 / 12
●	11	eave	71"	7' 5"	44 ft ²	7 / 12
●	12	eave	8"	3"	0 ft ²	7 / 12
∅	13	eave	4"	11"	0 ft ²	7 / 12
●	14	rake	11"	12' 7"	12 ft ²	8 / 12
●	15	eave	9"	7' 5"	5 ft ²	7 / 12
●	16	eave	19"	18' 2"	29 ft ²	8 / 12
●	17	rake	5"	10' 5"	5 ft ²	11 / 12
●	18	rake	5"	12'	5 ft ²	11 / 12
●	19	eave	8"	21' 4"	13 ft ²	11 / 12

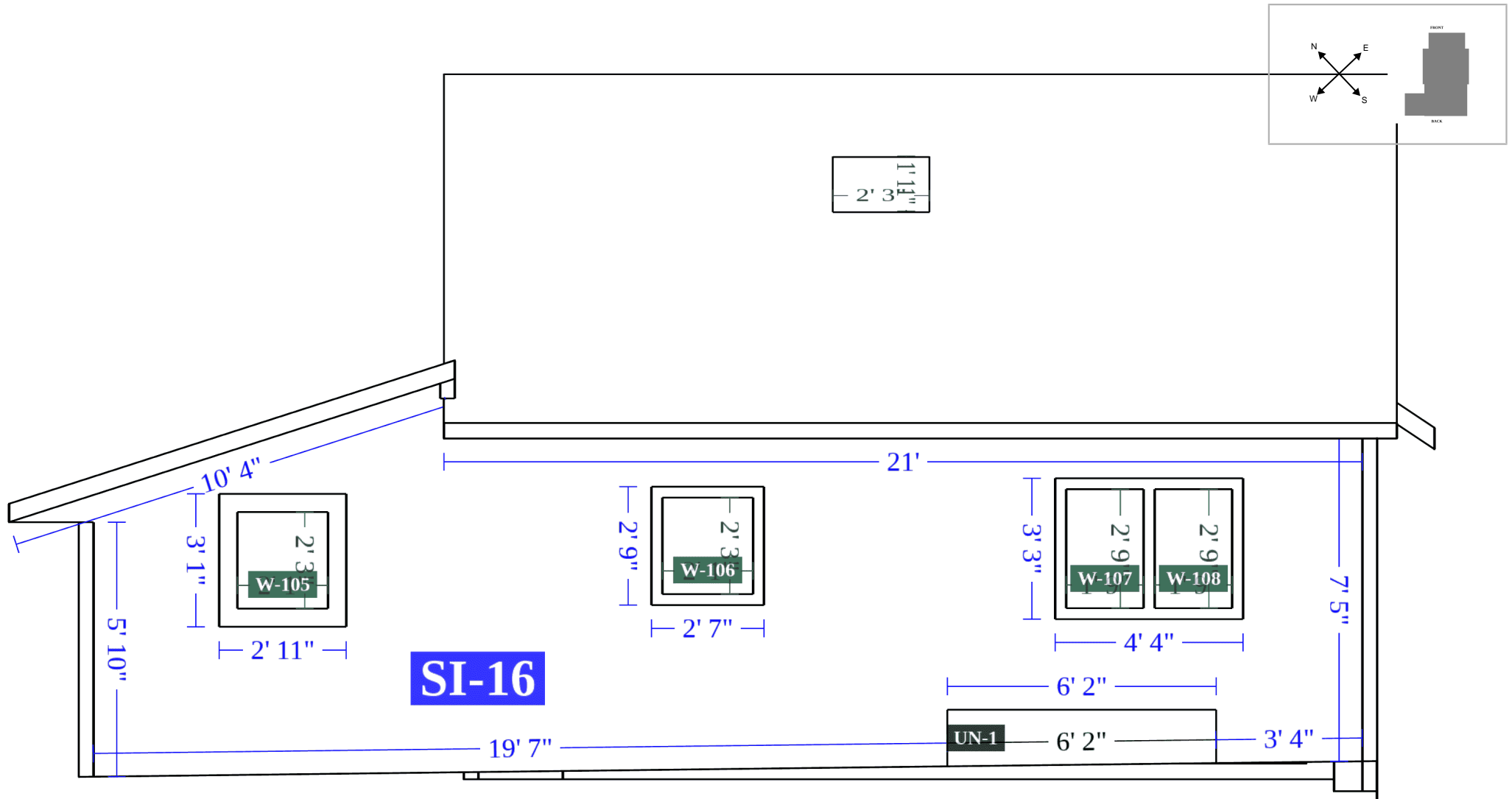
	num	Type	Depth	Length	Area	Pitch
●	20	rake	5"	9' 5"	4 ft ²	11 / 12
●	21	eave	129"	6"	5 ft ²	4 / 12
●	22	eave	19"	10' 7"	17 ft ²	4 / 12
●	23	rake	4"	10' 11"	4 ft ²	4 / 12
●	24	rake	5"	10' 7"	5 ft ²	11 / 12
●	25	eave	19"	18' 1"	29 ft ²	8 / 12
●	26	rake	11"	12' 7"	12 ft ²	8 / 12
●	27	eave	8"	8' 4"	6 ft ²	7 / 12
●	28	eave	9"	3"	0 ft ²	7 / 12
●	29	eave	73"	7' 5"	45 ft ²	7 / 12
∅	30	rake	5"	5' 3"	2 ft ²	7 / 12
∕	31	rake	9"	10' 9"	8 ft ²	7 / 12
●	32	eave	80"	6"	3 ft ²	7 / 12

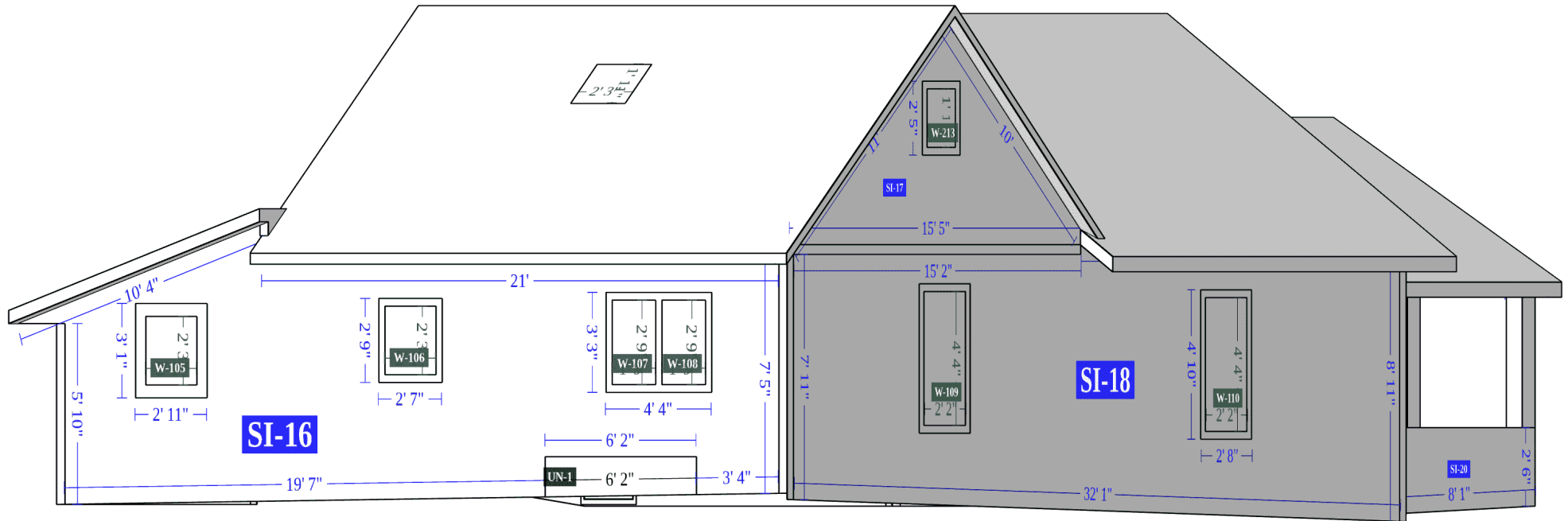
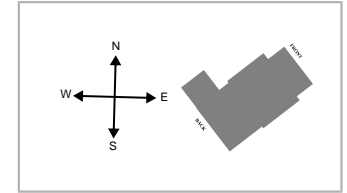
∅ Feature is too small to label on the plan diagram

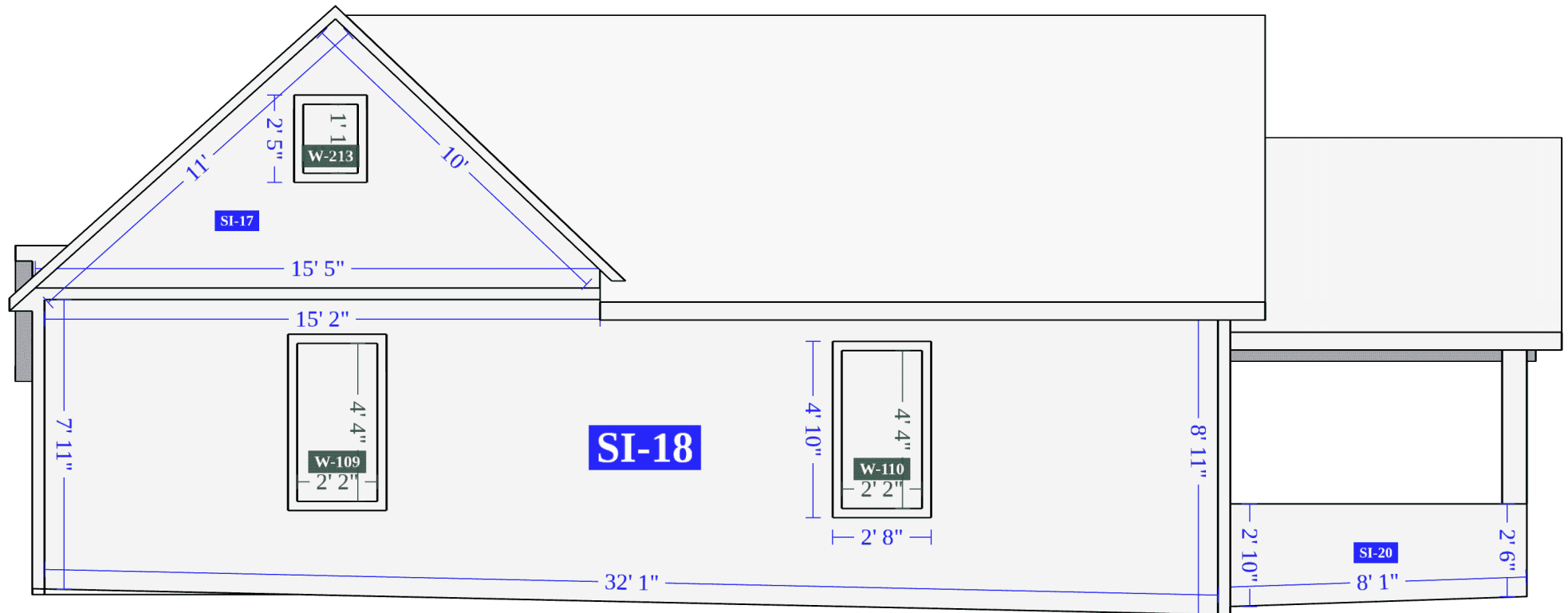
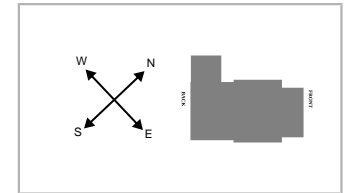


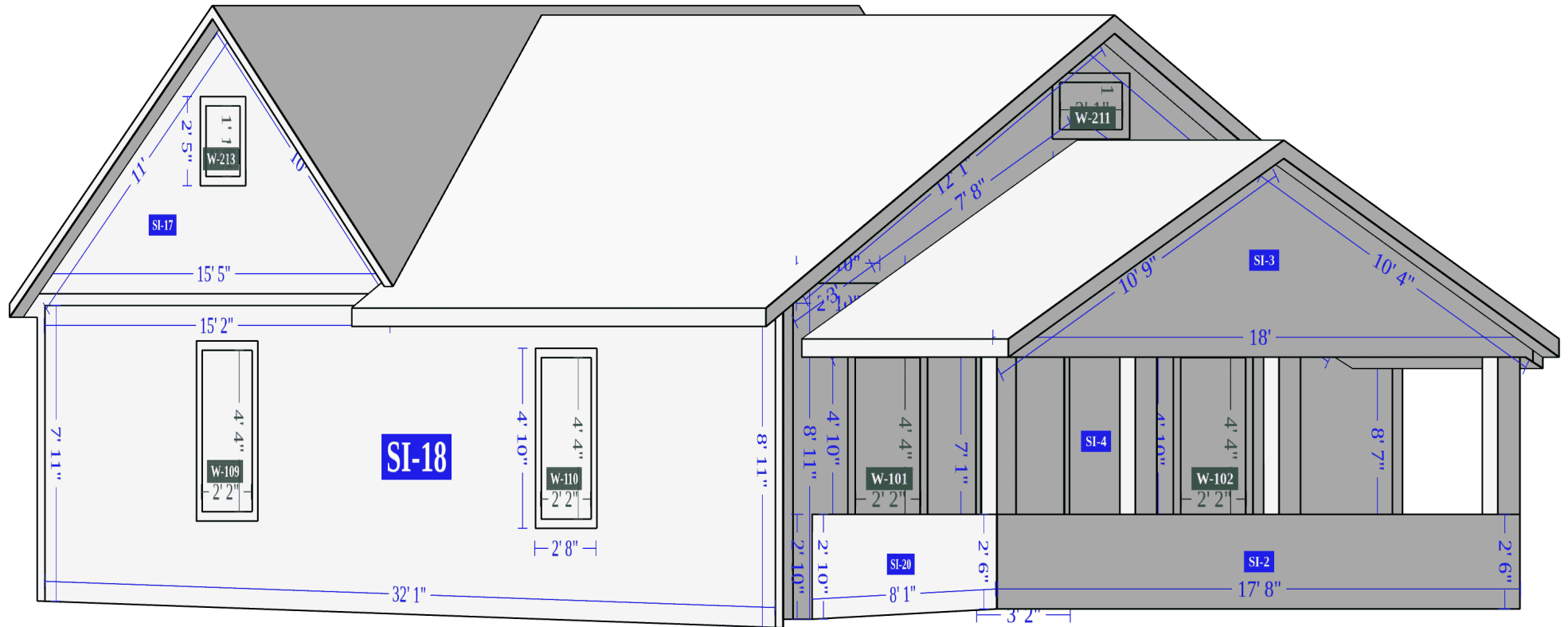
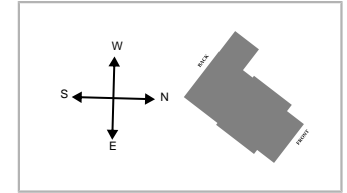














Siding

Facade	Area	Inside Corners	Outside Corners	Openings	Shutters	Vents
SI-1	16 ft ²	2	-	-	-	-
SI-2	45 ft ²	-	2	-	-	-
SI-3	49 ft ²	-	-	-	-	-
SI-4	116 ft ²	4	2	3	-	-
SI-5	13 ft ²	-	-	-	-	-
SI-6	36 ft ²	-	-	1	-	-
SI-7	21 ft ²	1	1	-	-	-
SI-8	140 ft ²	2	1	3	-	-
SI-9	62 ft ²	3	1	-	-	-
SI-10	41 ft ²	1	-	1	-	-
SI-11	58 ft ²	-	2	-	-	-
SI-12	16 ft ²	-	-	-	-	-
SI-13	36 ft ²	2	-	-	-	-
SI-14	14 ft ²	-	-	-	-	-
SI-15	7 ft ²	-	-	-	-	-
SI-16	183 ft ²	-	2	4	-	-
SI-17	54 ft ²	-	-	1	-	-
SI-18	244 ft ²	-	2	2	-	-
SI-19	16 ft ²	2	-	-	-	-



Siding (cont.)

Facade	Area	Inside Corners	Outside Corners	Openings	Shutters	Vents
SI-20	22 ft ²	1	1	-	-	-
SI-21	5 ft ²	-	-	-	-	-
SI-22	4 ft ²	-	-	-	-	-
SI-23	3 ft ²	-	-	-	-	-
SI-24	3 ft ²	-	-	-	-	-
SI-25	3 ft ²	-	-	-	-	-
Total	1207 ft ²	18	14	15	0	0



Unknown (missing photos)

Facade	Area	Openings	Shutters	Vents
UN-1	8 ft ²	-	-	-
Total	8 ft ²	0	0	0



Facades

Facade	Area	Trim			Corners		Roofline		Openings		
		Level Starter	Sloped	Vertical	Inside	Outside	Level Frieze Board	Sloped Frieze Board	Tops	Sills	Sides
SI-1	16 ft ²	7' 5"	-	-	4' 4"	-	-	-	-	-	-
SI-2	45 ft ²	17' 8"	-	-	-	5' 1"	-	-	-	-	-
SI-3	49 ft ²	18'	3"	4"	-	-	-	21'	-	-	-
SI-4	116 ft ²	20' 3"	6'	2'	9' 8"	17'	9"	7' 6"	8' 7"	8' 7"	33' 5"
SI-5	13 ft ²	11' 8"	-	-	-	-	6' 11"	5' 6"	-	-	-
SI-6	36 ft ²	6' 6"	15' 5"	-	-	-	-	24'	2' 7"	2' 7"	3' 6"
SI-7	21 ft ²	8' 1"	-	-	2' 6"	2' 6"	-	-	-	-	-
SI-8	140 ft ²	15' 11"	5' 11"	2"	5'	8' 4"	16' 10"	-	7' 9"	7' 9"	26' 7"
SI-9	62 ft ²	10' 5"	-	8"	5' 5"	5' 3"	-	10' 11"	-	-	2' 7"
SI-10	41 ft ²	14' 6"	-	5"	5"	-	4"	19' 3"	1' 8"	1' 8"	4' 3"
SI-11	58 ft ²	9' 11"	-	-	-	11' 1"	9' 11"	-	-	-	-
SI-12	16 ft ²	6' 8"	-	4' 1"	-	-	2' 2"	5' 3"	-	-	-
SI-13	36 ft ²	16' 8"	-	-	4' 4"	-	-	-	-	-	-
SI-14	14 ft ²	4' 2"	-	6' 8"	-	-	4'	1"	-	-	-
SI-15	7 ft ²	4'	-	3' 5"	-	-	-	4' 8"	-	-	-
SI-16	183 ft ²	31'	-	3' 9"	-	13' 3"	21'	10' 4"	9' 9"	9' 9"	18'
SI-17	54 ft ²	15' 5"	-	6"	-	-	-	21'	2'	2'	4' 9"
SI-18	244 ft ²	32' 1"	-	4"	-	16' 1"	16' 11"	-	5' 5"	5' 5"	19' 3"



Facades (cont.)

Facade	Area	Trim			Corners		Roofline		Openings		
		Level Starter	Sloped	Vertical	Inside	Outside	Level Frieze Board	Sloped Frieze Board	Tops	Sills	Sides
SI-19	16 ft ²	7' 5"	-	-	4' 4"	-	-	-	-	-	-
SI-20	22 ft ²	8' 1"	-	-	2' 10"	2' 6"	-	-	-	-	-
SI-21	5 ft ²	-	-	-	-	-	-	-	-	-	-
SI-22	4 ft ²	-	-	-	-	-	-	-	-	-	-
SI-23	3 ft ²	-	-	-	-	-	-	-	-	-	-
SI-24	3 ft ²	-	-	-	-	-	-	-	-	-	-
SI-25	3 ft ²	-	-	-	-	-	-	-	-	-	-
Total*	1207 ft²	265' 11"	27' 7"	22' 4"	19' 5"	40' 7"	78' 9"	129' 7"	37' 8"	37' 8"	112' 4"

*Totals de-duplicate any line segments that are shared between multiple facades, and as a result may not represent a total summation of the corresponding column.

Example Waste Factor Calculations

SIDING & TRIM ONLY

	Zero Waste	+10%	+18%
SI-1	16 ft ²	18 ft ²	19 ft ²
SI-2	45 ft ²	50 ft ²	53 ft ²
SI-3	49 ft ²	54 ft ²	58 ft ²
SI-4	116 ft ²	128 ft ²	137 ft ²
SI-5	13 ft ²	14 ft ²	15 ft ²
SI-6	36 ft ²	40 ft ²	42 ft ²
SI-7	21 ft ²	23 ft ²	25 ft ²
SI-8	140 ft ²	154 ft ²	165 ft ²
SI-9	62 ft ²	68 ft ²	73 ft ²
SI-10	41 ft ²	45 ft ²	48 ft ²
SI-11	58 ft ²	64 ft ²	68 ft ²
SI-12	16 ft ²	18 ft ²	19 ft ²
SI-13	36 ft ²	40 ft ²	42 ft ²
SI-14	14 ft ²	15 ft ²	17 ft ²
SI-15	7 ft ²	8 ft ²	8 ft ²
SI-16	183 ft ²	201 ft ²	216 ft ²

+ OPENINGS < 20FT²

	Zero Waste	+10%	+18%
	16 ft ²	18 ft ²	19 ft ²
	45 ft ²	50 ft ²	53 ft ²
	49 ft ²	54 ft ²	58 ft ²
	152 ft ²	167 ft ²	179 ft ²
	13 ft ²	14 ft ²	15 ft ²
	39 ft ²	43 ft ²	46 ft ²
	21 ft ²	23 ft ²	25 ft ²
	171 ft ²	188 ft ²	202 ft ²
	62 ft ²	68 ft ²	73 ft ²
	43 ft ²	47 ft ²	51 ft ²
	58 ft ²	64 ft ²	68 ft ²
	16 ft ²	18 ft ²	19 ft ²
	36 ft ²	40 ft ²	42 ft ²
	14 ft ²	15 ft ²	17 ft ²
	7 ft ²	8 ft ²	8 ft ²
	203 ft ²	223 ft ²	240 ft ²

+ OPENINGS < 33FT²

	Zero Waste	+10%	+18%
	16 ft ²	18 ft ²	19 ft ²
	45 ft ²	50 ft ²	53 ft ²
	49 ft ²	54 ft ²	58 ft ²
	152 ft ²	167 ft ²	179 ft ²
	13 ft ²	14 ft ²	15 ft ²
	39 ft ²	43 ft ²	46 ft ²
	21 ft ²	23 ft ²	25 ft ²
	171 ft ²	188 ft ²	202 ft ²
	62 ft ²	68 ft ²	73 ft ²
	43 ft ²	47 ft ²	51 ft ²
	58 ft ²	64 ft ²	68 ft ²
	16 ft ²	18 ft ²	19 ft ²
	36 ft ²	40 ft ²	42 ft ²
	14 ft ²	15 ft ²	17 ft ²
	7 ft ²	8 ft ²	8 ft ²
	203 ft ²	223 ft ²	240 ft ²



SIDING & TRIM ONLY (CONT.)

	Zero Waste	+10%	+18%
SI-17	54 ft ²	59 ft ²	64 ft ²
SI-18	244 ft ²	268 ft ²	288 ft ²
SI-19	16 ft ²	18 ft ²	19 ft ²
SI-20	22 ft ²	24 ft ²	26 ft ²
SI-21	5 ft ²	6 ft ²	6 ft ²
SI-22	4 ft ²	4 ft ²	5 ft ²
SI-23	3 ft ²	3 ft ²	4 ft ²
SI-24	3 ft ²	3 ft ²	4 ft ²
SI-25	3 ft ²	3 ft ²	4 ft ²
UN-1	8 ft ²	9 ft ²	9 ft ²
Trims	96 ft ²	106 ft ²	113 ft ²
Total	1311 ft ²	1443 ft ²	1547 ft ²

+ OPENINGS < 20FT²

	Zero Waste	+10%	+18%
	57 ft ²	63 ft ²	67 ft ²
	262 ft ²	288 ft ²	309 ft ²
	16 ft ²	18 ft ²	19 ft ²
	22 ft ²	24 ft ²	26 ft ²
	5 ft ²	6 ft ²	6 ft ²
	4 ft ²	4 ft ²	5 ft ²
	3 ft ²	3 ft ²	4 ft ²
	3 ft ²	3 ft ²	4 ft ²
	3 ft ²	3 ft ²	4 ft ²
	8 ft ²	9 ft ²	9 ft ²
	138 ft ²	152 ft ²	163 ft ²
	1466 ft ²	1613 ft ²	1731 ft ²

+ OPENINGS < 33FT²

	Zero Waste	+10%	+18%
	57 ft ²	63 ft ²	67 ft ²
	262 ft ²	288 ft ²	309 ft ²
	16 ft ²	18 ft ²	19 ft ²
	22 ft ²	24 ft ²	26 ft ²
	5 ft ²	6 ft ²	6 ft ²
	4 ft ²	4 ft ²	5 ft ²
	3 ft ²	3 ft ²	4 ft ²
	3 ft ²	3 ft ²	4 ft ²
	3 ft ²	3 ft ²	4 ft ²
	8 ft ²	9 ft ²	9 ft ²
	138 ft ²	152 ft ²	163 ft ²
	1466 ft ²	1613 ft ²	1731 ft ²

The first Siding Waste Factor table is calculated using the total ft² of siding facades, ft² of trim touching siding, and ft² of unknowns touching siding.

The tables above provide the area of siding on a given property, segmented by individual and in sum total form. Values include openings (doors & windows) and waste percentages as noted. Please consider that area values and specific waste factors can be influenced by the size and complexity of the property, captured image quality, specific siding techniques, and your own level of expertise. Accessories are not included in these values and may require additional material.

These tables are only intended to make common waste calculations easier and should not be interpreted as recommendations.



Windows

Group	Group Width x Height	Group United Inches	Opening	Width x Height	United Inches	Area
WG-1	26" x 52"	78"	W-101	26" x 52"	78"	9 ft ²
WG-2	26" x 52"	78"	W-102	26" x 52"	78"	9 ft ²
WG-3	25" x 52"	78"	W-103	25" x 52"	78"	9 ft ²
WG-4	22" x 27"	49"	W-104	22" x 27"	49"	4 ft ²
WG-5	25" x 27"	51"	W-105	25" x 27"	51"	5 ft ²
WG-6	25" x 27"	51"	W-106	25" x 27"	51"	5 ft ²
WG-7	46" x 33"	78"	W-107	21" x 33"	54"	5 ft ²
			W-108	21" x 33"	54"	5 ft ²
WG-8	26" x 52"	78"	W-109	26" x 52"	78"	9 ft ²
WG-9	26" x 52"	78"	W-110	26" x 52"	78"	9 ft ²
WG-10	25" x 15"	40"	W-211	25" x 15"	40"	3 ft ²
WG-11	14" x 20"	33"	W-212	14" x 20"	33"	2 ft ²
WG-12	18" x 23"	41"	W-213	18" x 23"	41"	3 ft ²
			Total	-	813"	81 ft ²



Doors

Opening	Width x Height
D-1	32" x 80"
D-2	32" x 82"

*Door height and width have been snapped to standard

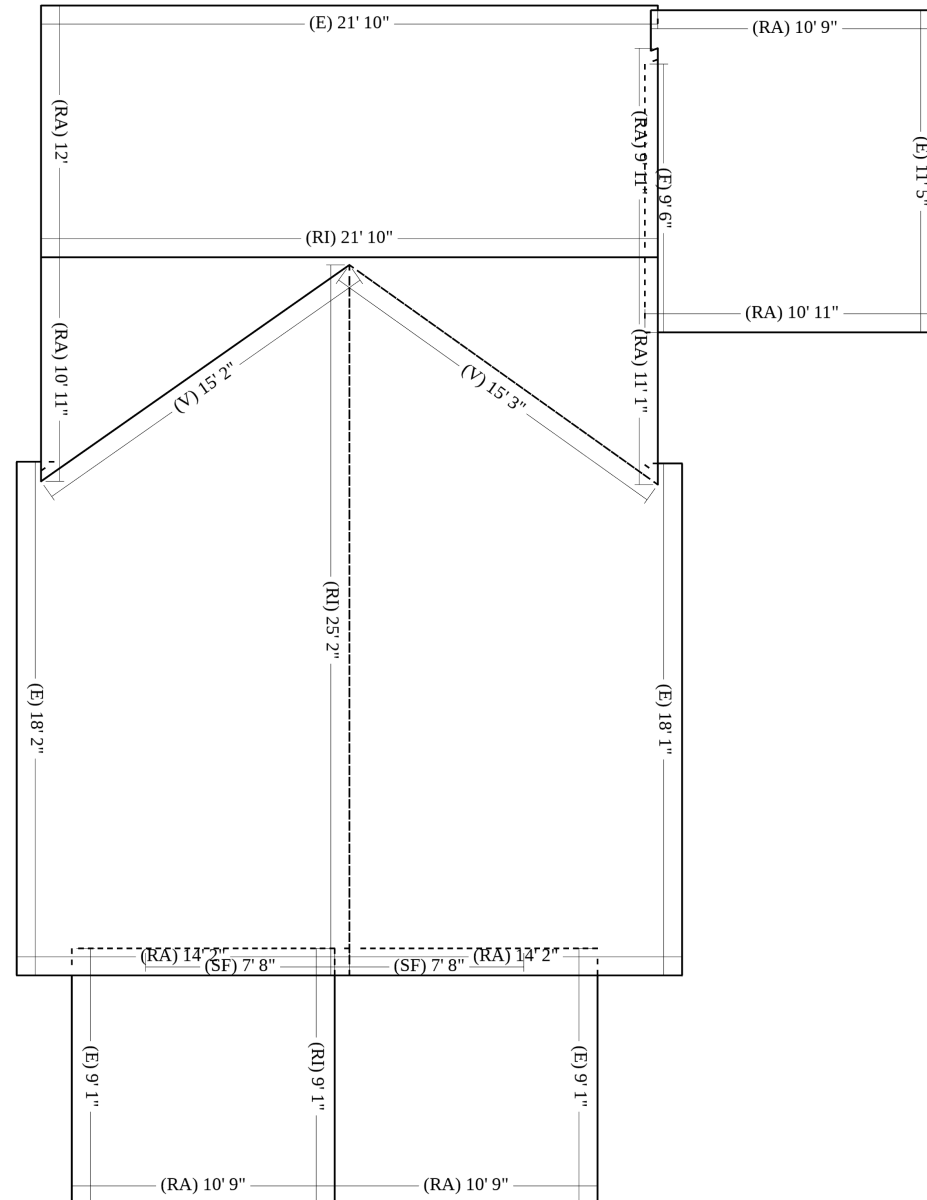
Entire Doors

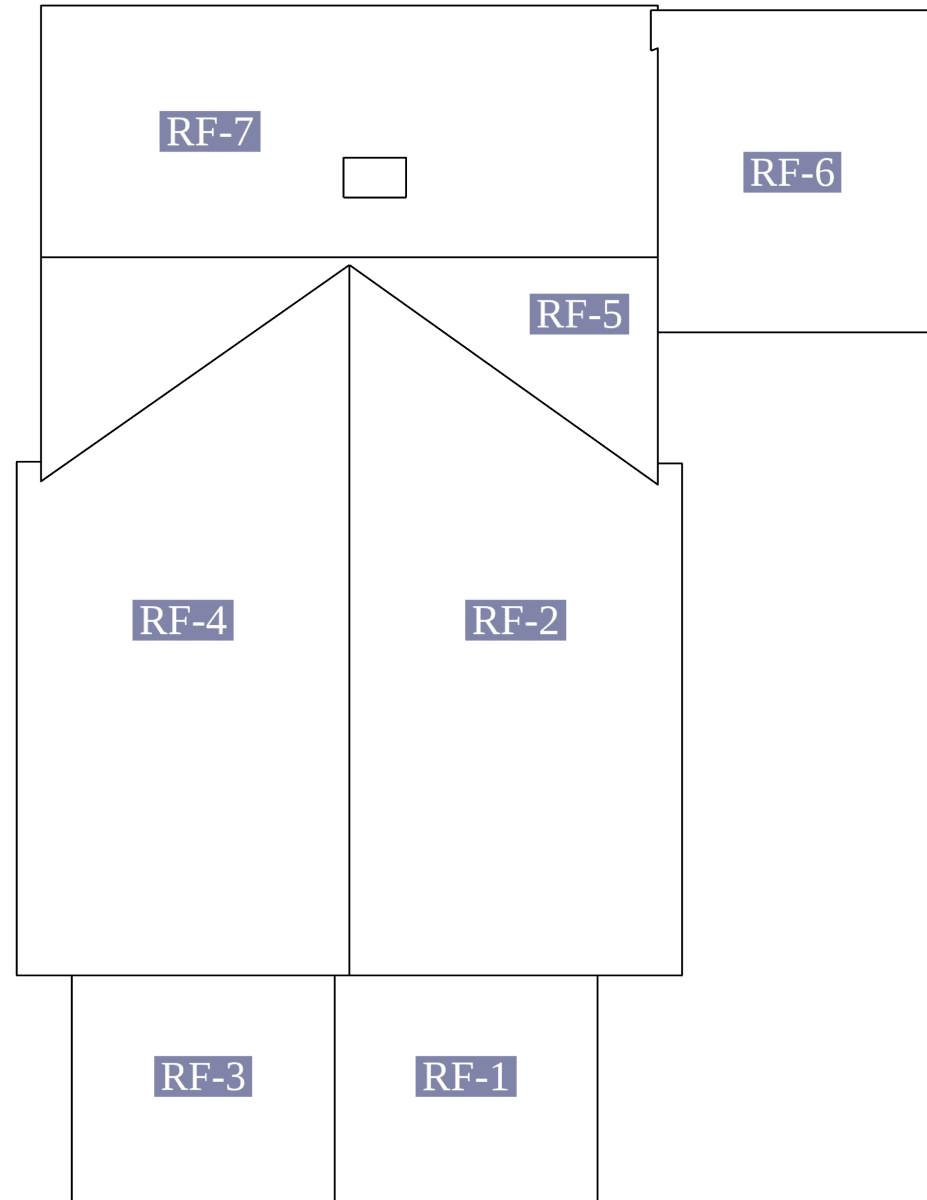
Opening	Width x Height	Area
D-1	34" x 81"	19 ft ²
D-2	31" x 82"	18 ft ²
Total	-	37 ft²

*Total door square footage includes entire door package (e.g. with transoms, sidelites, etc.)

Roof	Length
Ridges (RI)	56'
Hips (H)	-
Valleys (V)	30' 9"
Rakes (RA)	119' 4"
Eaves (E)	89' 1"
Flashing (F)*	12'
Step Flashing (SF)*	26' 6"
Transition Line (TL)	-

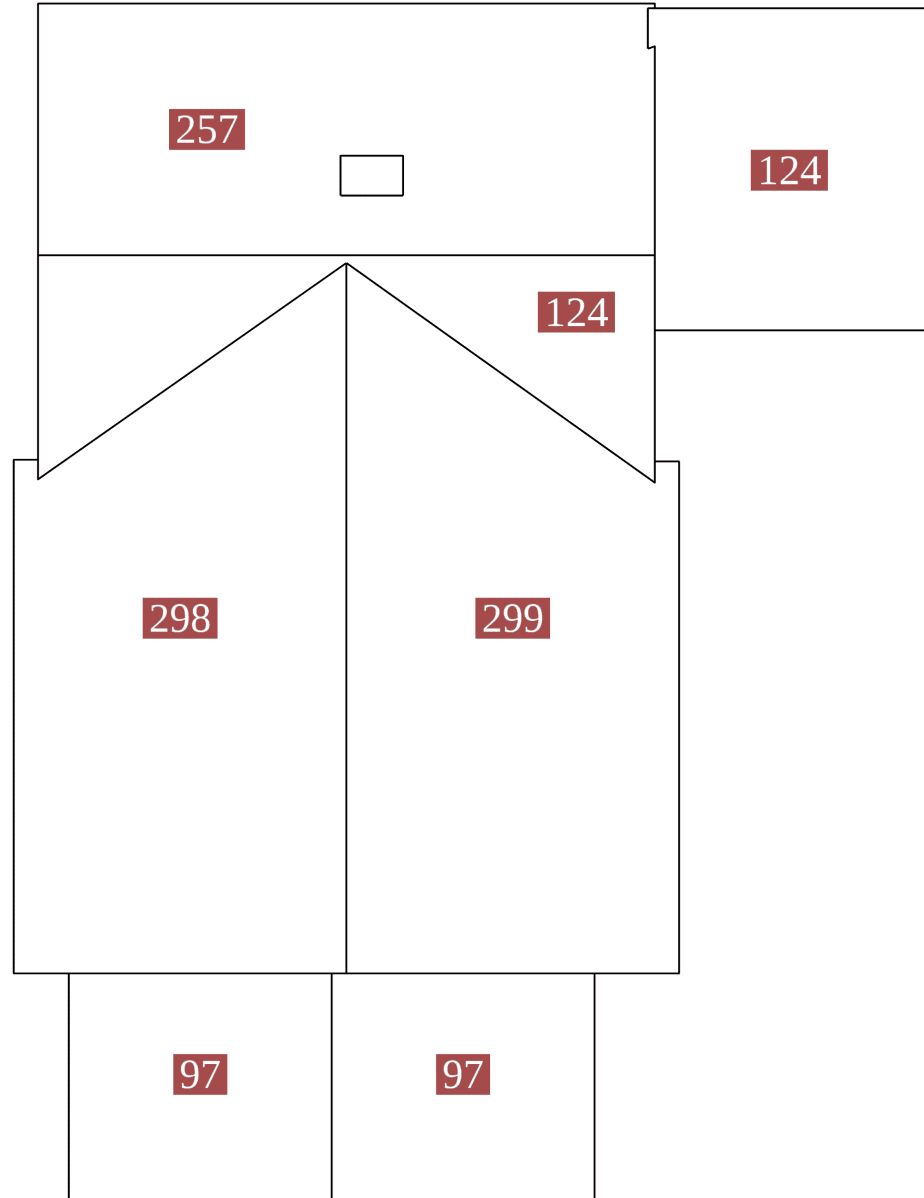
*Please view the 3D model for more detail (e.g. flashing, step flashing and some other roof lines may be difficult to see on the PDF)



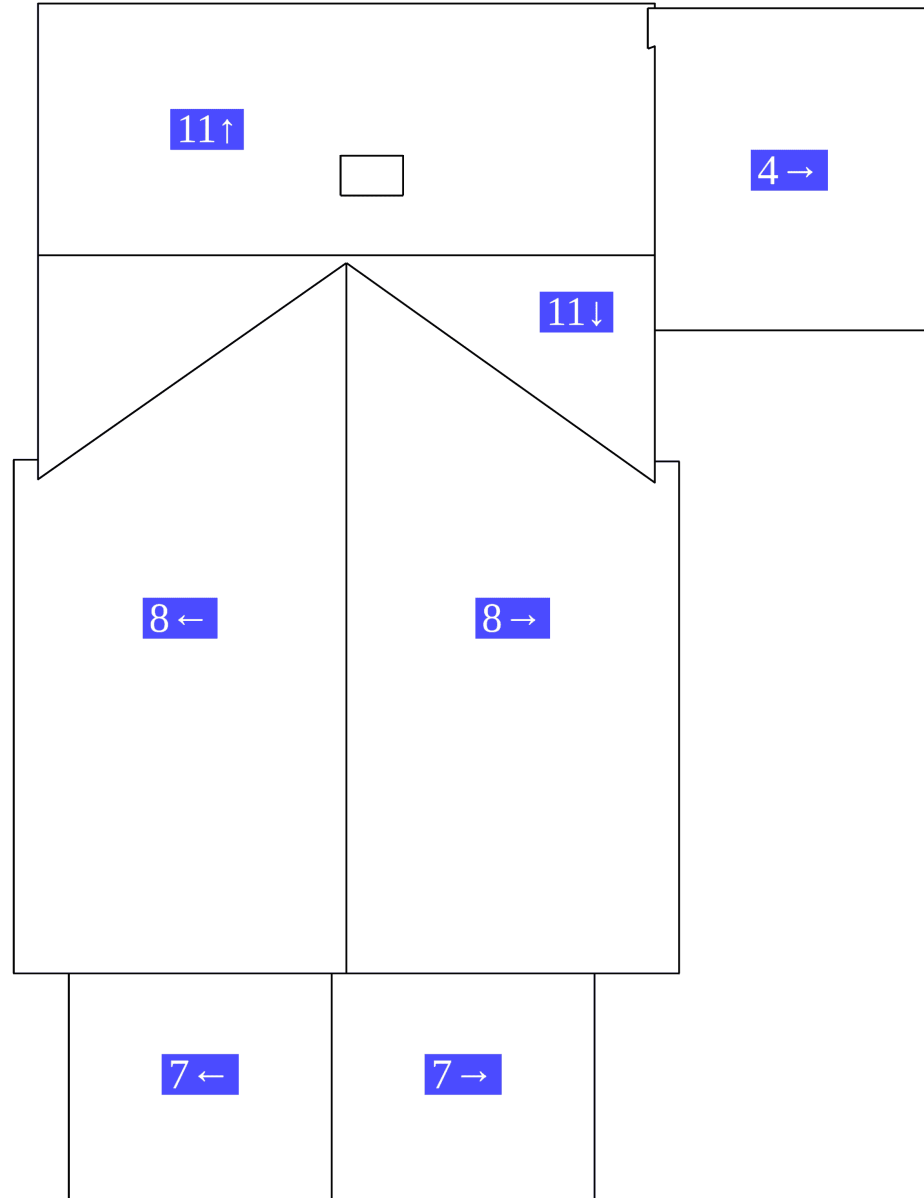


Roof Facets

Facet	Area	Pitch
RF-1	97 ft ²	7/12
RF-2	299 ft ²	8/12
RF-3	97 ft ²	7/12
RF-4	298 ft ²	8/12
RF-5	124 ft ²	11/12
RF-6	124 ft ²	4/12
RF-7	257 ft ²	11/12



Roof	Facets	Total
Total	7	1296 ft ²



Roof Pitch	Area	Percentage
8 / 12	597 ft ²	46.06%
11 / 12	381 ft ²	29.4%
7 / 12	194 ft ²	14.97%
4 / 12	124 ft ²	9.57%



