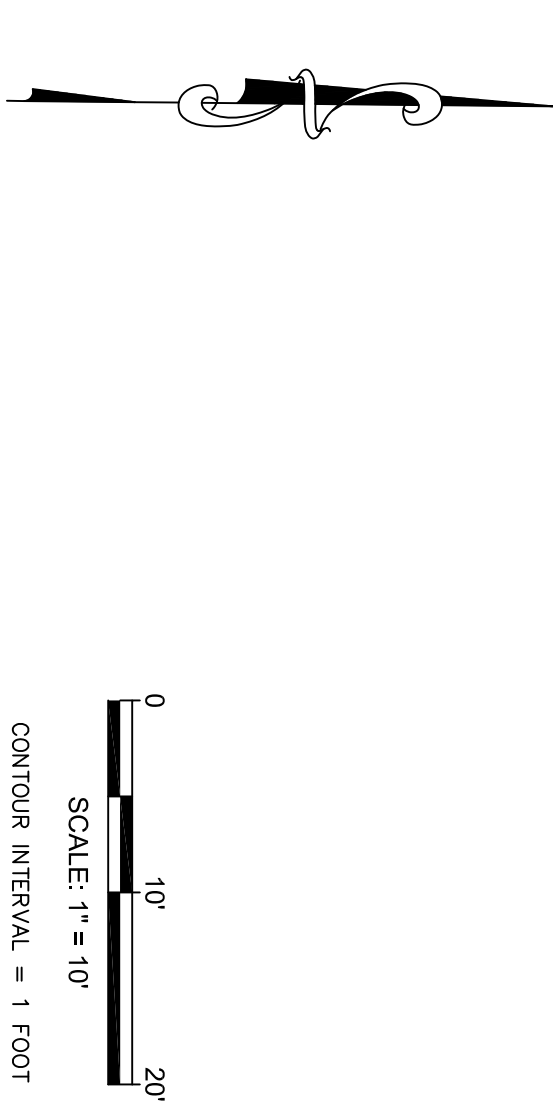
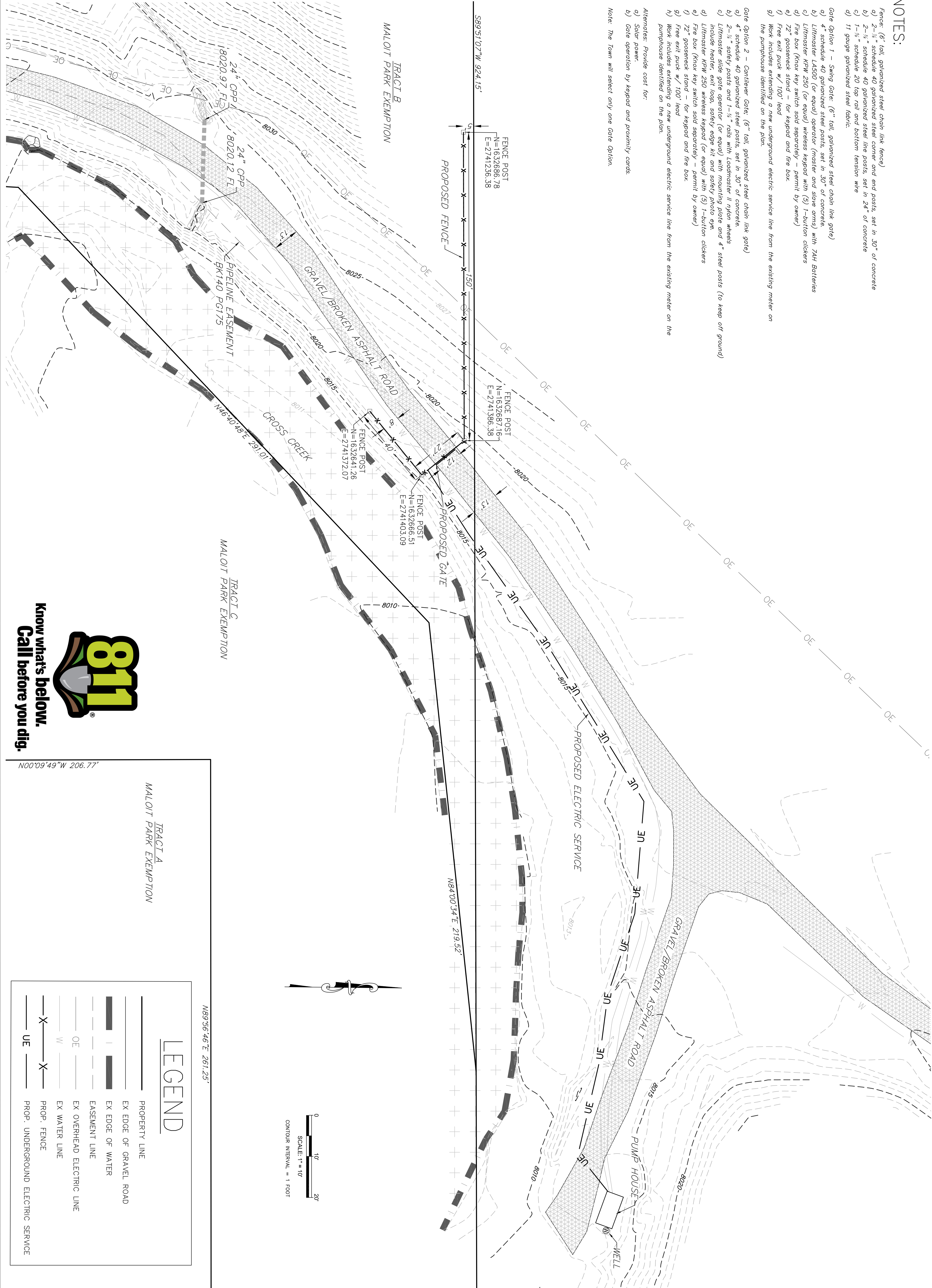
[illegible]

NOTES:

- Fence: 6" tall, galvanized steel chain link fence)
a) 2- $\frac{1}{2}$ " schedule 40 galvanized steel corner and end posts, set in 30" of concrete
b) 2- $\frac{1}{2}$ " schedule 40 galvanized steel line posts, set in 24" of concrete
c) 1- $\frac{1}{2}$ " schedule 20 top rail and bottom tension wire
d) 11 gauge galvanized steel fabric.
- Gate Option 1 – Swing Gate: (6" tall, galvanized steel chain link gate)
a) 4" schedule 40 galvanized steel posts, set in 30" of concrete.
b) Liftmaster LA500 (or equal) operator (master and slave arms) with 74H Batteries
c) Liftmaster KPW 250 (or equal) wireless keypad with (5) 1-button clickers
d) Fire box (Knox key switch sold separately – permit by owner)
e) 72" gooseneck stand – for keypad and fire box.
f) Free exit puck w/ 100' lead
g) Work includes extending a new underground electric service line from the existing meter on the pump house identified on the plan.
- Gate Option 2 – Cantilever Gate: (6" tall, galvanized steel chain link gate)
a) 4" schedule 40 galvanized steel posts, set in 30" of concrete.
b) 2- $\frac{1}{2}$ " safety posts and 1- $\frac{1}{2}$ " rails with Loadmaster II nylon wheels
c) Liftmaster slide gate operator (or equal) with mounting plate and 4" steel posts (to keep off ground) include header, exit loop, safety edge kit and safety photo eye.
d) Liftmaster KPW 250 wireless keypad (or equal) with (5) 1-button clickers
e) Fire box (Knox key switch sold separately – permit by owner)
f) 72" gooseneck stand – for keypad and fire box.
g) Free exit puck w/ 100' lead
h) Work includes extending a new underground electric service line from the existing meter on the pump house identified on the plan.
- Alternates: Provide cost for:
a) Solar power.
b) Gate operation by keypad and proximity cords.
- Note: The Town will select only one Gate Option.



LEGEND

- PROPERTY LINE
- EX EDGE OF GRAVEL ROAD
- EX EDGE OF WATER
- EASEMENT LINE
- EX OVERHEAD ELECTRIC LINE
- EX WATER LINE
- PROP. FENCE
- PROP. UNDERGROUND ELECTRIC SERVICE

MINTURN WATER PLANT GATE

MALOIT PARK EXEMPTION – TRACT B
1931 US HIGHWAY 24
COUNTY OF EAGLE, STATE OF COLORADO

TOWN OF MINTURN

This document was prepared for the exclusive use of the Client specified hereon. The use of this document or the information contained herein by any other person or entity is not authorized. In the event that any other person or entity desires to use this document or the information contained herein for any purpose they must first obtain written authorization from Inter-Mountain Engineering. This document and any information contained herein is intended to be used within one year of the date hereof. Use after that period is not authorized.



P.O. BOX 978, AVON, CO 81620 PH: (970)949-5072 FAX: (970)949-0339
9618 BROOK HILL LANE, LONE TREE, CO 80124 EMAIL: INFO@INTER-MTN.NET

NO.	DATE	REVISION	BY



N00°09'49"W 206.77'

TRACT A
MALOIT PARK EXEMPTION

N89°56'46"E 261.25'

N84°00'34"E 219.52'

TRACT B
MALOIT PARK EXEMPTION

TRACT C
MALOIT PARK EXEMPTION

FENCE POST
N=1632686.78
E=2741236.38

FENCE POST
N=1632687.16
E=2741386.38

FENCE POST
N=1632641.26
E=2741372.07

FENCE POST
N=1632666.51
E=2741403.09

24" CPP
18020.97 FLS

24" CPP
18020.12 FL

PIPELINE EASEMENT
BK140 PG175

CROSS CREEK

TRACT C
MALOIT PARK EXEMPTION

N89°56'46"E 261.25'

DESIGNED BY: JUSTIN A.
DRAWN BY: JUSTIN A.
CHECKED BY: JEFF S.
DATE ISSUED: 3-6-2024

PROJECT NO. 23-0001

SHEET NO. 2 OF 2