



WHAT IS MINTURN FORWARD?

In 2023, the community completed an update to Minturn's Community Plan. To implement the new Community Plan, one of the key next steps is updating the Town's "Land Use Code" (i.e., the Town's zoning and subdivision regulations) to align with the Values, Vision, and Objectives set forth in the Plan.

The effort to update the Town's Land Use Code is known as "Minturn Forward." This project is focused on updating Chapter 16 - Zoning, Chapter 17 - Subdivisions, and Appendix B - Minturn Design Standards and Guidelines of Minturn's Municipal Code.

PURPOSE OF OPEN HOUSES & ONLINE SURVEY?

The Land Use Code is one of the key tools that the Town has available for implementing the Values, Vision, and Objectives set forth in the 2023 Community Plan and the strategies presented in the 2023-2025 Strategic Plan. While these plans offer helpful direction, a greater level of detail is necessary to ensure that changes to the Town's Land Use Code align with the community's aspirations for Minturn.

The purpose of the online survey and Open Houses, being offered by the Town, is to enable the community to provide specific input on a number of topics relevant to the Land Use Code update.

This input, along with the direction from the Community Plan and Strategic Plan, will be guide the update to the Land Use Code.



ROLE OF COMMUNITY PLAN & STRATEGIC PLAN?

The 2023 Community Plan and 2023-2025 Strategic Plan set forth a number of priorities specific to an update to the Town's Land Use Code. These include, but are not limited to, the following:

- Balance community growth and development with preservation of Minturn's character.
- Improve the usability of the Town's land use regulations (ex. consolidate and simplify the Town's zone districts).
- Pursue land use changes that support Minturn's tax base and economic growth.
- Prioritize housing for full-time residents; ensure that residents of all ages and income levels are able to find housing.

These priorities, along with the input from the community, will inform and provide direction for the update to the Land Use Code.

KEY TERMS

Land Use: The type(s) of activity (ex. residential, commercial, industrial, civic, park, open space, etc.) that a piece of property is used for.

Zoning: The legal tool that the Town uses to determine where different types of land uses and development can occur.



LAND USE CODE SURVEY

NOW AVAILABLE



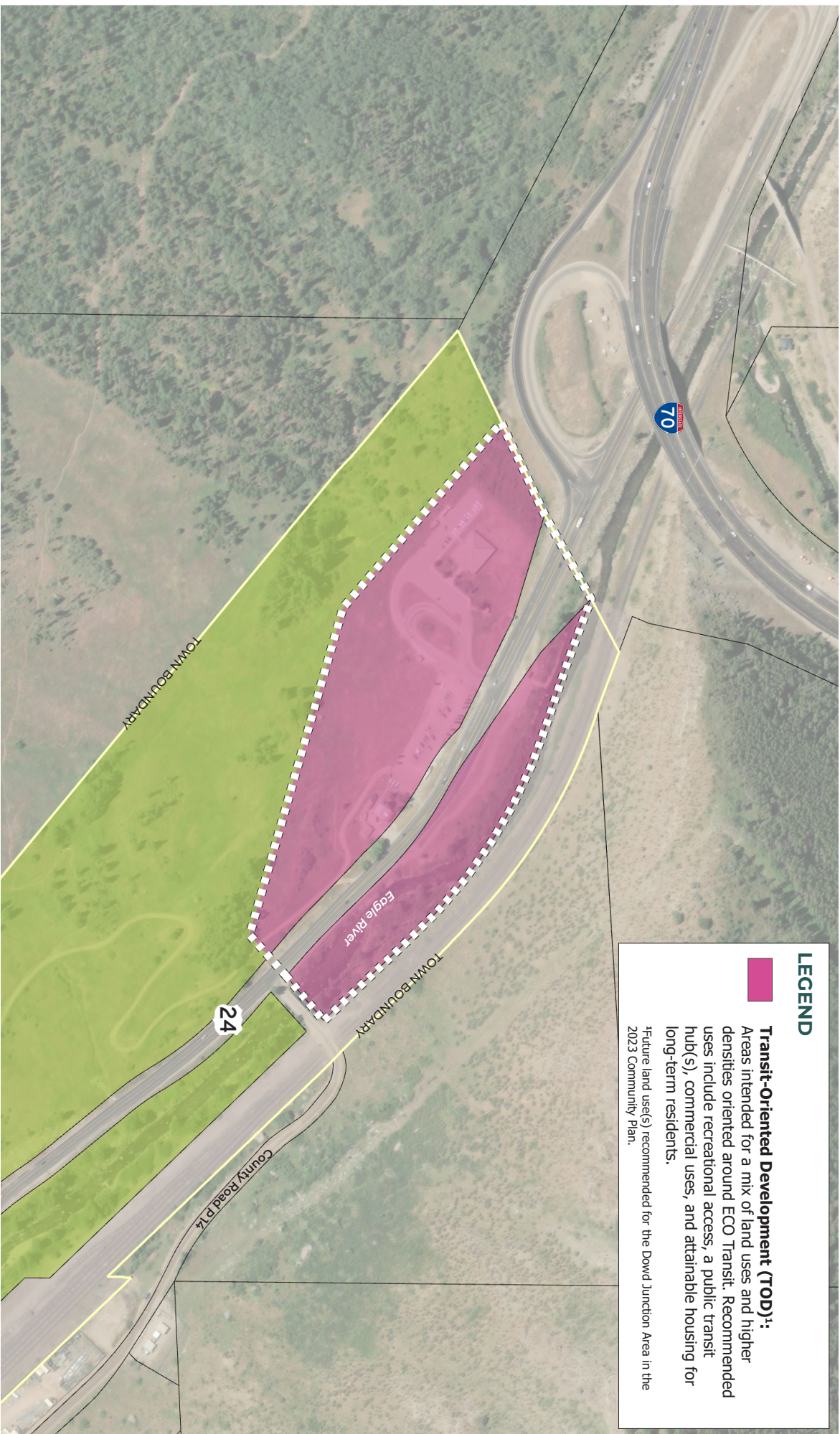
SCAN ME



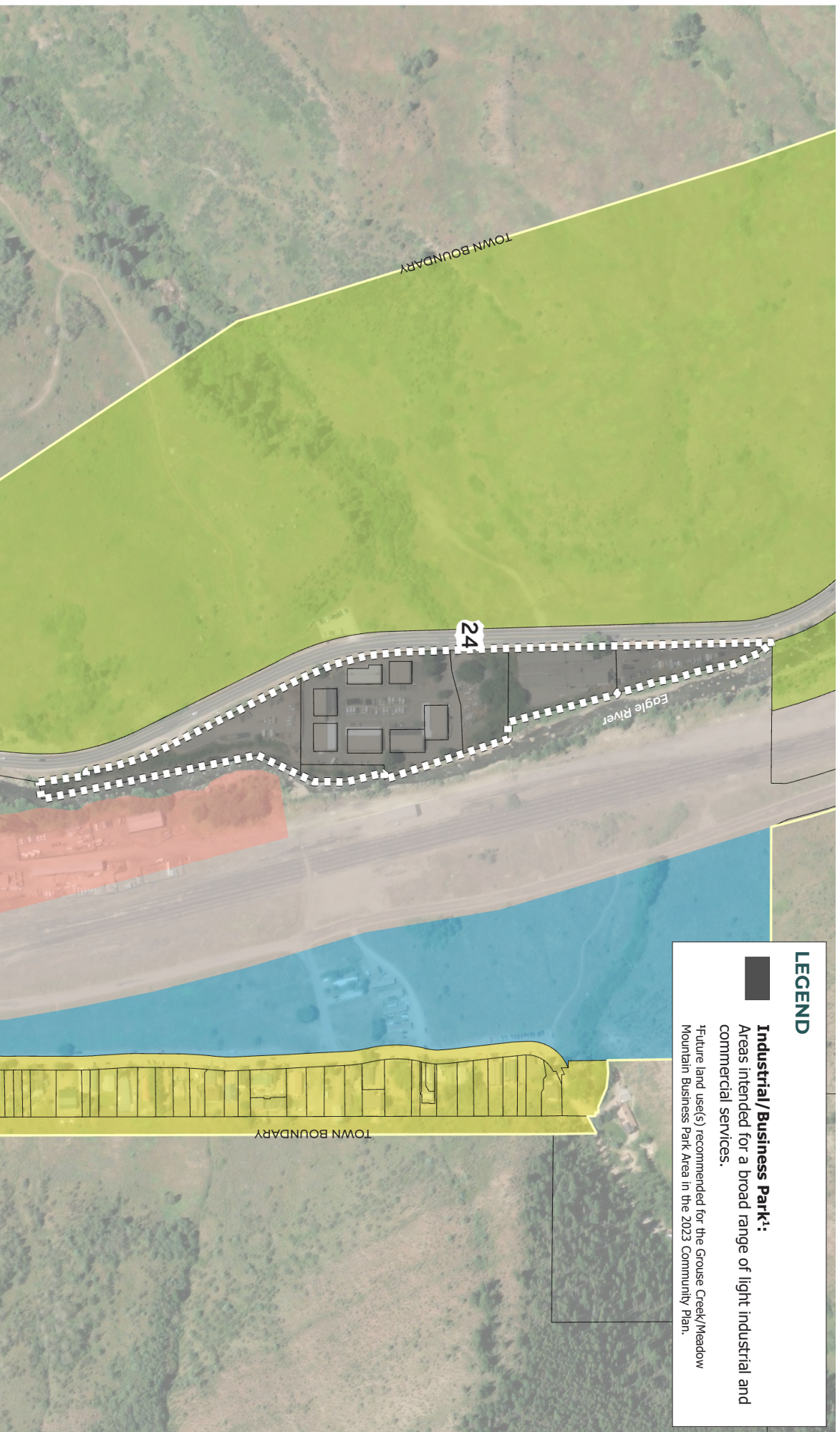
[HTTPS://WWW.SURVEYMONKEY.COM/R/6PYCVK6](https://www.surveymonkey.com/r/6PYCVK6)



DOWD JUNCTION



GROUSE CREEK/MEADOW MTN BUSINESS PARK



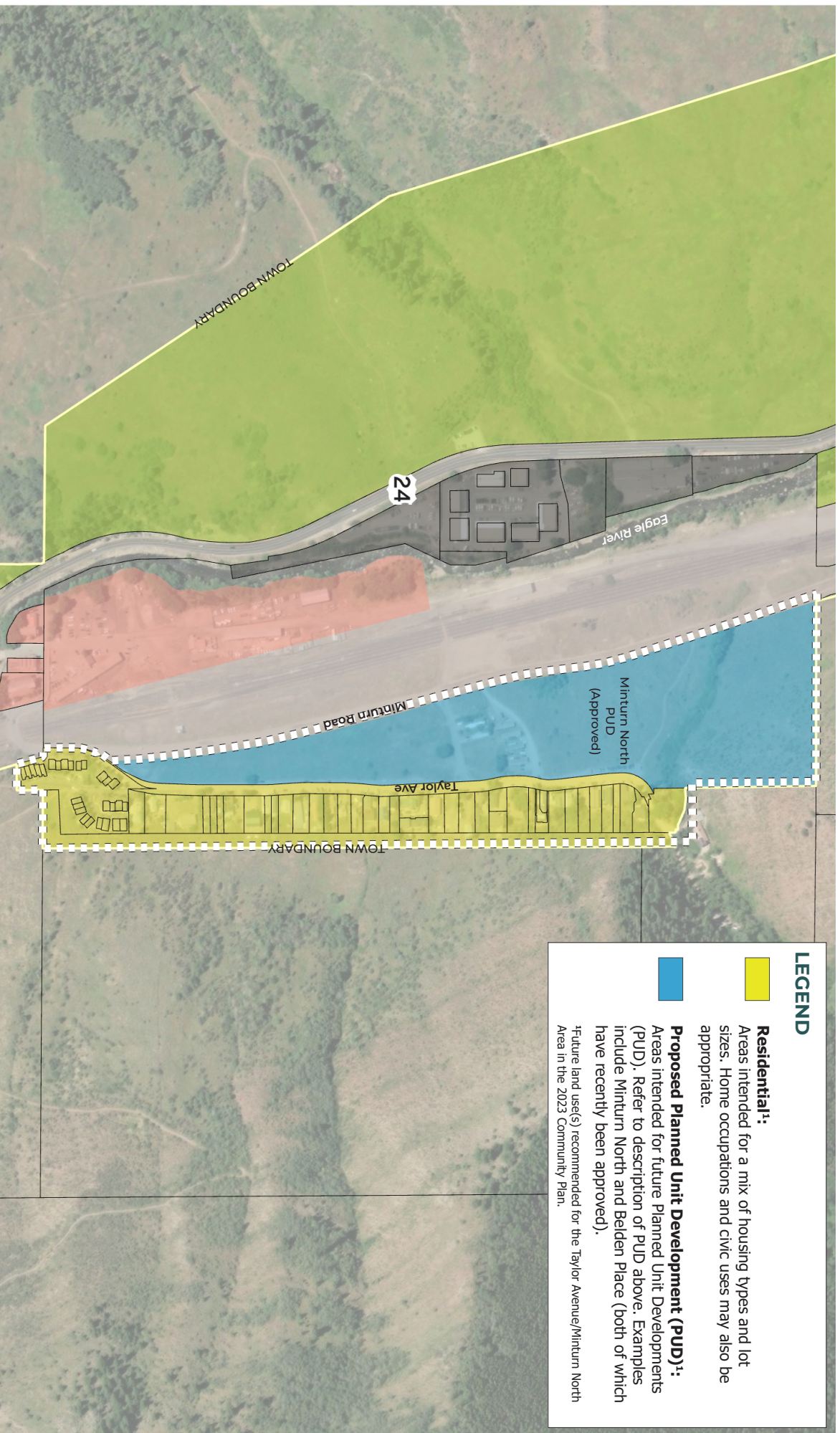
LEGEND



Industrial/Business Park¹:
Areas intended for a broad range of light industrial and commercial services.

¹Future land use(s) recommended for the Grouse Creek/Meadow Mountain Business Park Area in the 2023 Community Plan.

TAYLOR AVE/MINTURN NORTH



100-BLOCK

