

TECHNICAL SPECIFICATION

FOR

**40' X 8' X 9'6" ISO 1AAA TYPE
STEEL DRY CARGO CONTAINER**

WITH

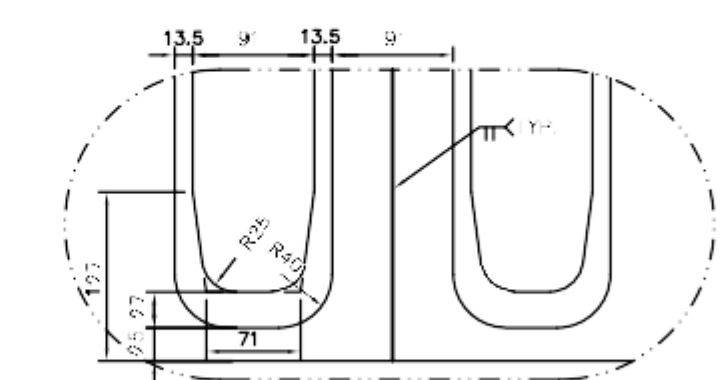
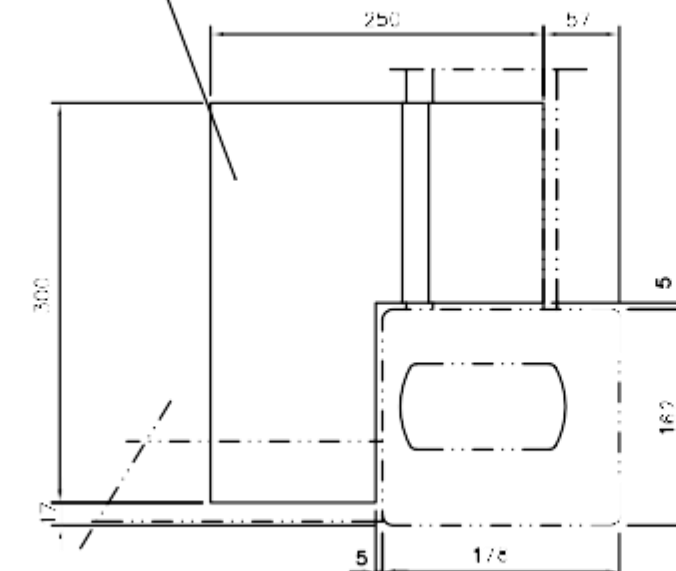
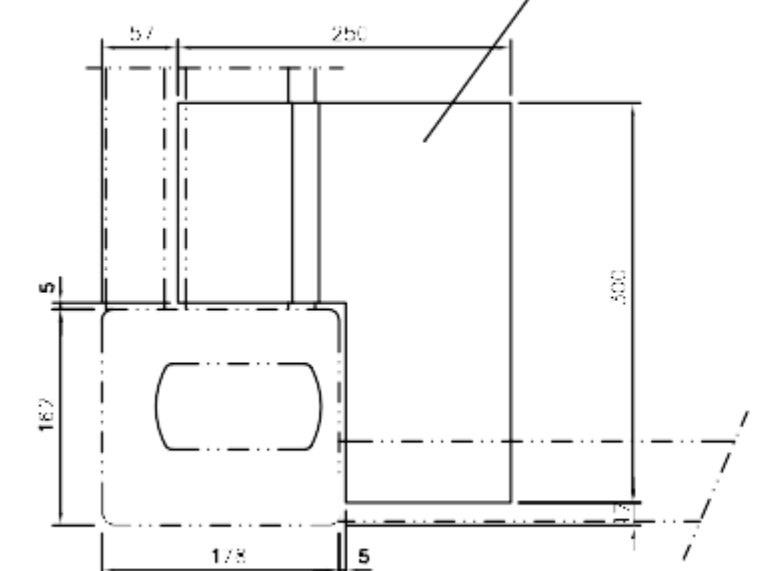
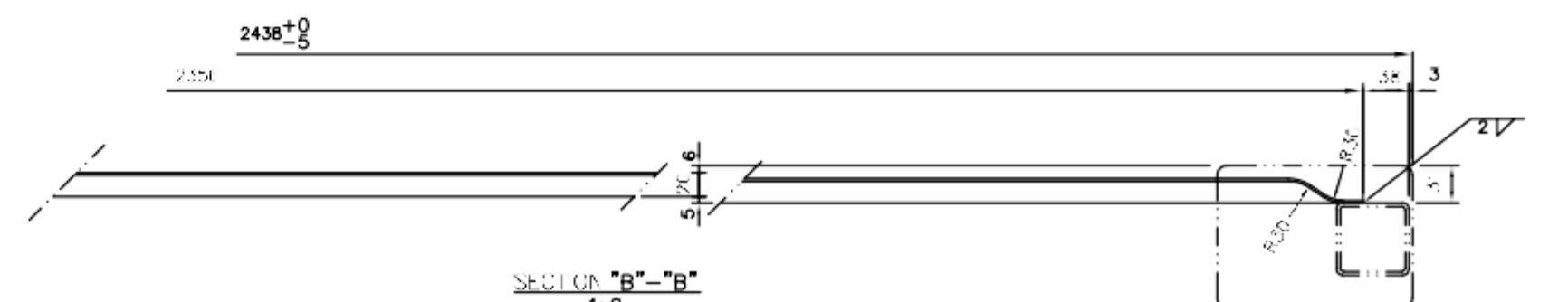
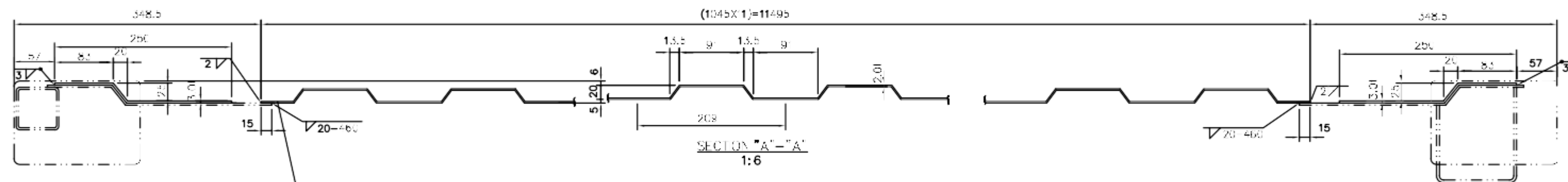
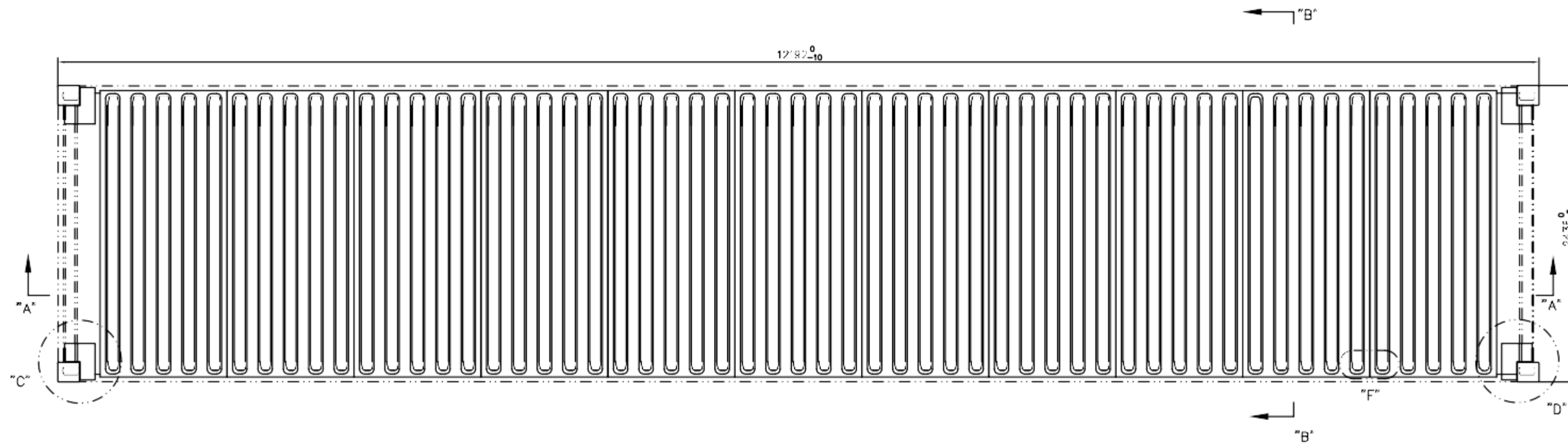
ALL SPA-H

GOOSENECK TUNNEL
CORRUGATED ROOF
CORRUGATED DOOR
PLYWOOD FLOOR
2 VENTILATORS

FOR

GROUP STANDARD





3	REAR REINFORCEMENT PLATE	030'300'1	SPA-H	2
2	FRONT REINFORCEMENT PLATE	020'300'1	SPA-H	2
1	ROOF PANEL	10'0'200'0	SPA-H	11
NO	DESCRIPTION	DWG NO.	M'TL	QTY

American Conex				
TITLE: ROOF ASSEMBLY 40' & 40'HC				
OWNED BY:		SCALE:	1:32	SIZE: A
DESIGNED BY:		WEIGHT:	KG	QTY:
CHECKED BY:		DWG No. 6000		
APPROVED BY:				
SHEET	1	OF	1	SHEETS
SCALE:		1/8"=1'-0"		

THIS DRAWING AND ALL COPIES THEREOF ARE CONFIDENTIAL AND THE PROPERTY BELONGS TO FACTORY. ANY PART OF THIS DRAWING SHALL NOT BE COPIED, REPRODUCED, DISCLOSED OR DISTRIBUTED TO A PARTY WITHOUT PRIOR WRITTEN APPROVAL FROM FACTORY.

