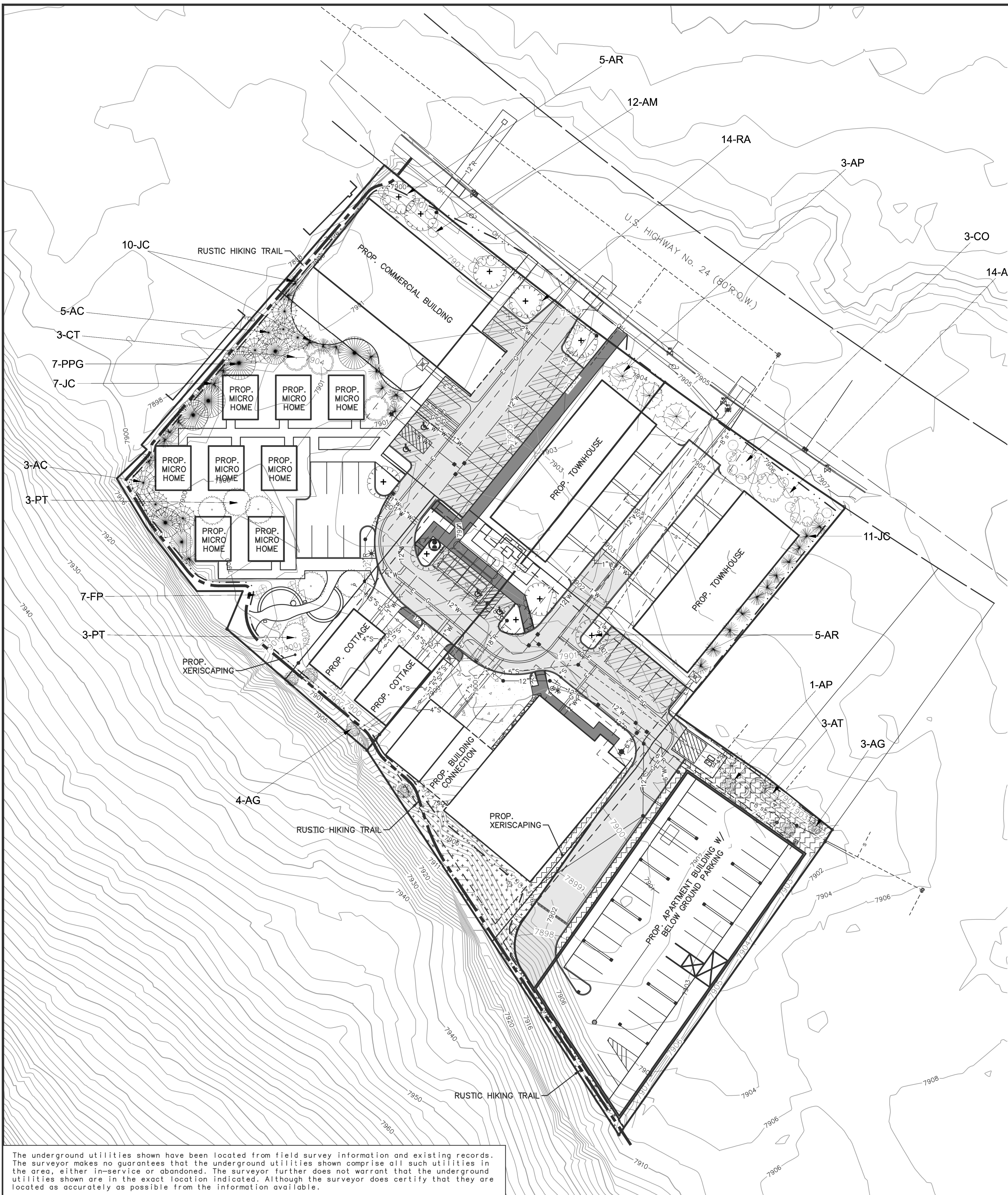
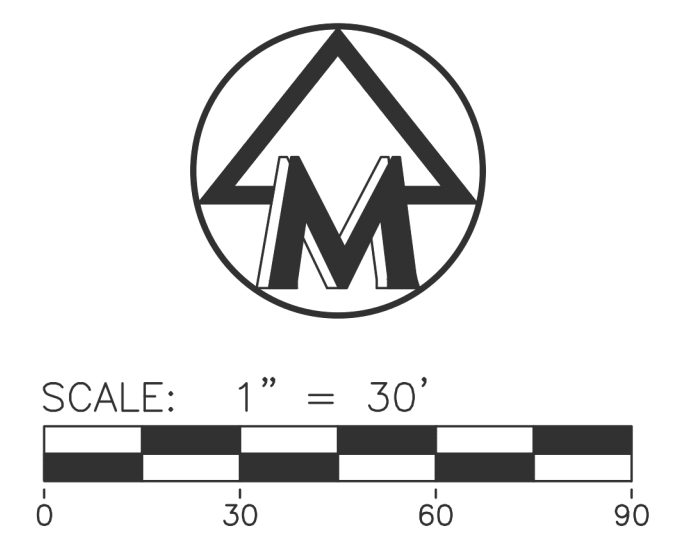


M:\Civ1134_P\Proj\20067\Site Plan\20067LPI.dwg, 11/22/2024 11:45 AM, Colton M. Wolfers, 10 LANDSCAPE PLAN, MCLLC PDF, pc-3
 Copyright © 2024, Midwestern Consulting L.L.C. All rights reserved. No part of this drawing may be used or reproduced in any form or by any means, or stored in a database or retrieval system, without prior permission of Midwestern Consulting L.L.C.



LANDSCAPE LEGEND

- PROPOSED XERISCAPING
- PROPOSED RIVERSTONE
- PROPOSED RESTORATION SEED MIX
- PROPOSED SEEDED AREA
- PROPOSED CONCRETE WALK
- PROPOSED BITUMINOUS PAVEMENT
- PROPOSED CONCRETE PAVEMENT



LANDSCAPE REQUIREMENTS BY TRACT
 (1 TREE PER 1,000 SQ FT OF OPEN SPACE)

TRACT	SQ FOOTAGE	TREES OR EVERGREENS REQUIRED	PROVIDED
A	21,912	22	7
B	3,509	4	4
C	21,484	22	41
D	21,158	22	23
E	0	0	4
		TOTAL	79

PLANT SCHEDULE							
Symbol	Qty	Key	Common	Botanical	Root	Size	Notes
Evergreen Trees							
	43						
	28	JC	Spartan Juniper	Juniperus chinensis 'Spartan'			
	8	AC	White Fir	Abies concolor 'Rochester'			
	7	PPG	Blue Colorado Spruce	Picea Pungens Glauca			
Deciduous Canopy Tree							
	36						
	3	CO	Common Hackberry	Celtis Occidentalis	B&B	2.5" Ca	
	3	AT	Hot Wings Tatarian Maple	Acer tataricum GarAnn			
	3	CT	Northern Catalpa	Catalpa speciosa			
	4	AP	Norway Maple - Royal Red	Acer Platanoides 'Royal Red'	B&B	2.5" Ca	
	6	PT	Quaking Aspen	Populus tremuloides			
	7	AG	Rocky Mountain Maple	Acer glabrum			
	10	AR	Red Maple	Acer rubrum 'Red Sunset'	B&B	2.5" Ca	Male only
Shrubs for Xeriscape							
	7	FP	Apache Plume	Falugia paradoxa	#3 Cont	30-36" ht	
	26	AM	Black Chokeberry	Aronia melanocarpa			
	14	RA	Golden Currant	Ribes aureum			
Other Possible Shrubs for Xeriscape							
		AC	Arctostaphylos x coloradoensis 'Panchito'	Panchito Manzanita	#3 Cont		
		CM	Chamaebatiaria millefolium	Fernbush	#3 Cont		
		CP	Cytisus purgans 'Spanish Gold'	Spanish Gold Broom	#3 Cont		
		BT	Berberis thunbergii 'Crimson Pygmy'	Crimson Pygmy Barberry	#3 Cont	30-36" ht	
		PB	Prunus besseyi 'Pawnee Buttes'	Creeping Western Sand Cherry	#3 Cont	30-36" ht	
Perennials and Grasses for Xeriscape							
		AS	Achillea ssp.	Yarrow			
		AG	Agastache ssp.	Agastache			
		CO	Callirhoe onvolucrata	Prairie Winecups			
		DS	Delosperma ssp.	Iceplant			
		HS	Helictotrichon sempervirens	Blue Avena Grass			
		KS	Kniphofia spp.	Torch Lily			
		NT	Nassella tenuissima	Mexican Feather Grass			
		Sp	Salvia pachyphyla	Mojave Sage			

RESTORATION SEED MIX

Lower Montane Mix: 7,501 - 8,500 feet a.s.l.						
Scientific Name (USDA)	Common Name (USDA)	Cultivar or Ecotype	Cultivar or Ecotype	Life History	% Mix	Pounds PLS Needed
Adenolinum lewisii	Lewis flax	CO ecotype or Maple Grove		NPF	2	0.32
Bouteloua gracilis	Blue Grama	Fremont CO ecotype		NPG-L	8	0.52
Cleome serrulata	Rocky Mountain Beeplant	CO Ecotype (or VNS)		NAF	2	0.84
Elymus elymoides	Squirreltail	Pueblo or Wapiti		NPG-L	10	2.5
Elymus trachycaulus	Slender Wheatgrass	Pryor or Frist Strike or San Luis		NPG-L	14	4.63
Festuca arizonica	Arizona Fescue	Redondo		NPG-L	10	1
Gaillardia aristata	Blanketflower	CO Ecotype (or VNS)		NPF	3	0.77
Pascopyrum smithii	Western Wheatgrass	Arriba		NPG-L	14	5.89
Poa secunda	Sandberg Bluegrass	Sims Mesa or high Plains		NPG-L	12	0.55
Pseudoroegneria spicata	Bluebunch Wheatgrass	Anatone		NPG-L	8	3.28
Quickguard	Quickguard	Quickguard	Cover Crop		1	3.42
Rudbeckia hirta	Black-eyed Susan	CO Ecotype (or VNS)		NBF	3	0.09
Bromus marginatus	Mountain Brome	Cold Springs or Eco type		NPG-L	12	6.85
Penstemon strictus	Rocky Mountain Penstemon	Bandera		NPF	1	0.11

The underground utilities shown have been located from field survey information and existing records. The surveyor makes no guarantees that the underground utilities shown comprise all such utilities in the area, either in-service or abandoned. The surveyor further does not warrant that the underground utilities shown are in the exact location indicated. Although the surveyor does certify that they are located as accurately as possible from the information available.

MIDWESTERN CONSULTING
 3845 Plaza Drive, Ann Arbor, Michigan 48108
 (734) 995-0300 • www.midwesternconsulting.com
 Land Development • Land Survey • Institutional • Municipal
 Wireless Communications • Transportation • Landfill Services

MIDTOWN VILLAGE PUD
 LANDSCAPE PLAN

10

DATE: 11/22/24
 SHEET 10 OF 38
 JOB No. **20067**
 REVISIONS:
 PEARL ERWSD. & IME REVIEW 02/23/24 CAD: [blank]
 PEARL ERWSD. & IME REVIEW 08/19/24 ENG: CMW
 PEARL ERWSD. & IME REVIEW 11/27/24 TECH: RCW
 PEARL ERWSD. & IME REVIEW 1/20/24 LPI

CLIENT
 10TH MOUNTAIN BUILDERS
 1632 MAIN STREET
 MINTURN, CO 81645
 JEFFREY D. ARMISTEAD
 970-471-0618

COLORADO LICENSED
 ROBERT C. WACHNER
 60475
 PROFESSIONAL ENGINEER