



Project Summary Information

Project Title: **Minturn's Little Beach Park Enhancement Project**

Applicant
Organization(s): **Town of Minturn**

Applicant
Name(s): **Michelle Metteer**

Partner Organization (if applicable): **NA**

Partner Name (if applicable): **NA**

Amount Requested: **\$475,291**

Estimated Total Project Cost: **\$790,488**

Estimated Grant Period (years): **2**

Brief Project Description (limit to space provided without expanding the text box; use 10 pt font)

The Town of Minturn seeks \$475,291 in GOCO Community Impact funds, with \$315,197 in match, for the Little Beach Park Enhancement Project. Little Beach Park is nestled between the Minturn cliffs and the Eagle River, is within walking distance of downtown Minturn, and serves as Minturn's only community park. At nearly 20 years old, the park faces threats, including failing structures and lack of accessibility, that also present an opportunity to leverage immediate repair needs to transform this outdated, unsafe recreational amenity into a premier riverfront asset for Minturn. With GOCO's support, the Town will finalize design through a robust bilingual community outreach process and construct new and improved park amenities that meet the needs of the community and catalyze investment in Minturn. GOCO funds will also facilitate river education through community events and interpretive signage to encourage stewardship and ensure the health of the Eagle River.

Minturn's Little Beach Park Enhancement Project – Project Narrative

Proposed Project

The Town of Minturn seeks \$475,291 in GOCO Community Impact funds, with \$315,197 in match, for the Little Beach Park Enhancement Project. Little Beach Park is nestled between the Minturn cliffs and the Eagle River, is within walking distance of downtown Minturn, and serves as Minturn's only community park. At nearly 20 years old, the park faces threats, including failing structures and lack of accessibility, that also present an opportunity to leverage immediate repair needs to transform this outdated, unsafe recreational amenity into a premier riverfront asset for Minturn. With GOCO's support, the Town will finalize design through a robust bilingual community outreach process and construct new and improved park amenities that meet the needs of the community and catalyze investment in Minturn. GOCO funds will also facilitate river education through community events and interpretive signage to encourage stewardship and ensure the health of the Eagle River.

Little Beach Park, built in 2005, has a small amphitheater, the Town's only playground, swings & a see-saw, a climbing wall, a half basketball court, picnic tables with grills, a pit toilet, and a small non-ADA accessible parking lot. The park is located along the riverbank and is connected to the amphitheater by an asphalt path. The amphitheater features a covered stage and a sloped lawn for seating. The covered stage, a timber wood structure, is located close to the river and faces north, providing performers with views of the Minturn Cliffs. Residents can access the river through a non-ADA-accessible social trail where residents fish and enjoy one of the few spots in Minturn along the river.

Minturn is a small (population 978) workforce community located almost 7 miles from I-70 along State Highway 24. While the median household income is \$101,950, residents struggle with the high cost of living. The average sales price of a residential home in the last year was \$1.35 million (REDFIN), leaving little funding for additional recreational activities. Most residents work for the ski town of Vail, and Minturn's proximity to the resort community has put additional pressure on the housing market. Further, residents living below the poverty line (4.8%) and with a disability (4.2%) lack access to amenities along the I-70 corridor and have limited access to public transit through the Eagle Valley Transit Authority American Community Survey).

The Town is requesting GOCO support to leverage DOLA funding to transform Little Beach Park as Phase II of the enhancement project. Together, state, local, and GOCO funding will revitalize the park and breathe new life into Minturn. With GOCO funding, the Town **may** construct a modern, accessible playground, demolish the pit restrooms and replace them with an ADA accessible trailer styled porta potty, improve internal circulation and ADA access for vehicles, build a full multi-use court, provide additional park seating and ADA river trail access, and stabilize the river bank while incorporating educational elements, as outlined in the 2023 [Little Beach Park Area Recreation Plan](#) (LBP Plan). GOCO funds will ensure the creation of a public space that expands the number of families with access to outdoor recreation. Project activities will draw additional attendance to existing amphitheater events and allow Minturn to expand the number of events at the amphitheater, enhance active and passive offerings, and invigorate the local economy.

While the Town has already completed large-scale public outreach and planning to determine community desires for the park, an emerging partnership with Eagle Valley Outdoor Movement (EVOM) allows Minturn to expand and strengthen communication with Latino residents. Other than addressing immediate retaining wall stabilization needs, the Town **has not** determined the final amenities for the park. Minturn will work with community partners to gather additional public input and finalize recreational opportunities, keeping *inclusiveness, equitable recreation, community vitality, youth connections, and outdoor stewardship* as guiding principles.

Community Need: GOCO funds will expand safe, equitable access to outdoor recreation for youths, residents, and visitors, plus explore how to create ADA access to a community cut off from the Eagle River. Minturn is a small, youthful, rural town with a median age of 38.1 and a sizable Latino population (19.8%). Increasing community vitality will help the Town reverse a troubling population loss and grow the local tax base. Since 2010, the population of Minturn has steadily declined by almost 15% (American Community Survey). This population loss has strained the Town's finances, which is highly dependent on sales tax.

The risk to the playground makes the need to need to leverage additional resources to preserve the community's existing recreational assets paramount. The only park Minturn residents have access to, Little Beach Park, is facing an immediate threat: a failing and unsafe retaining wall that keeps the hillside from falling into the playground. To address this health and safety risk, Minturn has applied to the Colorado Department of Local Affairs (DOLA) for Phase I of the project, repairing and stabilizing the retaining wall.

While supportive of the project, DOLA has informed Minturn that grant funding will likely be contingent on GOCO approving funding for Phase II since the Town cannot fully finance the project. DOLA does not typically award funding for parks but makes exceptions for projects requiring basic infrastructure with direct health and safety benefits. Unless GOCO awards this funding, Minturn's only playground will be in danger of being closed as the retaining wall fails. If Minturn must close its only playground, the closest park playground is Stephens Park, which is 5.1 miles from Minturn in West Vail. The loss of the playground would impact not only Minturn's residents but also the hundreds of residents who live along State Highway 24 who would also need to drive to West Vail.

Ensuring ADA-accessible youth recreational opportunities is essential as 18.7% of residents are under 18, and the community faces a deficit in park access. Located in a narrow valley, Minturn has topographical constraints that limit recreation development. Little Beach Park is the Town's only outdoor passive and active recreation facility and the Town's highest priority, as its recreational amenities no longer meet community needs. The playground area is aging, and its outdated features include wood chip surfacing, which can obscure hazards, present a choking hazard, and do not allow for wheelchairs or other mobility devices. The Colorado Intergovernmental Risk Sharing Agency (CIRSA) has cited the wooden playground as a safety risk for almost a decade.

The playground is a highly valued outdoor recreational amenity, and its location adjacent to the amphitheater provides synergistic family evenings during events such as the Summer Concert Series. Adults and older children enjoy live music, while younger children happily play at the playground. The park's proximity to downtown and residential neighborhoods offers invaluable opportunities to enhance the vitality of Minturn's commercial core and neighborhoods. These areas have struggled with population loss and an unstable tax base. Improvements to outdoor recreation offerings, amenities, and accessibility can help redress these issues.

Safeguarding the playground, transforming the park into a modern community asset, and committing to long-term maintenance are high priorities for the small community that struggles to fund capital projects. Not only is Minturn budgeting \$130,017 in matching funds, but the Town is also committing to the long-term care of the park. Recognizing the need to maintain capital investments, the residents of Minturn approved a 2018 use tax on building materials solely dedicated to a Capital Fund. To ensure that GOCO's investment in the park is protected in the future, Minturn's Town Council Resolution of Support commits to using Capital Improvement Funds for the ongoing maintenance of Little Beach Park. Residents' willingness to approve a tax on building materials they pay themselves and the Town Council's dedication of Capital Improvement Funds to Little Beach Park highlights how important recreation amenities and the park are to the community.

Project Planning Process

Community-Driven Vision: The Little Beach Park Enhancement Project grew from the larger 2023 Little Beach Park Recreation Area Plan (LBP Plan). As part of the LBP Planning process, Minturn worked with the community to examine Little Beach Park and Amphitheater, Minturn's Riverview Cemetery, the Public Works Facility and Storage Yards, and the Minturn Bike Park and Mini-Mile Trail. The LBP planning process engaged the residents and stakeholders of Minturn through an open house, pop-up events, in-person and virtual meetings, and guided tours of the area and outlined various potential improvements suggested and vetted with members of the public and stakeholders. Public engagement activities started in the late summer of 2021 and ran through the summer of 2022. The planning process paralleled the Town's Community Plan Update, benefitting from the overlap to align planning efforts. The robust planning process established a conceptual framework plan for the area, identified community-supported potential improvements, and outlined recommendations based on the input received.

The LBP Plan incorporated several phases to revitalize and upgrade Little Beach Park. Overall improvements include stabilizing the retaining wall, expanding seating, demolition and removal of the existing restroom, replacing the pit toilet with separate ADA-complaint men's and women's restrooms, providing increased access to the Eagle River, widening an asphalt access road to support ADA access to the amphitheater, expanding and improving the amphitheater, and updating and replacing the playground to include ADA equipment and rubber safety play surface. The recommended improvements from the LBP Plan are included as a two-page attachment to the application. The Town is unable to move forward with future phases of the project at this time due to resource constraints, but Minturn will explore future improvements to the amphitheater in the coming years.

Continued Engagement: Phases I and II of Minturn's proposed project are included in and guided by the LBP Plan, which the Town considers as a baseline for **possible** recreational amenities. To improve upon the already robust engagement process described above, Minturn will continue engagement through the fall of 2024 and during the design process to fine-tune recreational amenities. A burgeoning partnership with Eagle Valley Outdoor Movement (EVOM) will allow Minturn to enhance communication with Latino residents, starting with a community-wide picnic that will double as an outreach event for **all** residents at the park. EVOM will invite Latino residents using their established network and provide Spanish interpreters to ensure residents can participate equally.

Following the grant award, Minturn and EVOM will continue their partnership. EVOM and the Town will follow best management practices for bilingual outreach at public meetings. EVOM will be a member of the Project Team and help Minturn not only translate all meeting materials into Spanish but also design public outreach intentionally to facilitate accessibility and inclusivity for diverse communities. The Town and EVOM will deploy an online and paper survey in English and Spanish and hold public meetings, with Spanish translation, at 30% and 50% design for additional input. The Town will hold these meetings at varying times to ensure the public can attend. To increase public awareness of input opportunities, Minturn will advertise meetings on its website and social media accounts, and project partners and supporters will be asked to share public input events and project updates with their stakeholders.

The Town will use the suggested park improvements from the LBP Plan as the initial vision for park upgrades while seeking new voices and ideas to improve the project. Should the community raise ideas outside of the budget available for the project, the Town will seek additional funding from foundations, undertake community fundraising, and budget additional monies in the Town's FY 2025 budget. If these funding sources do not provide enough revenue, the Town will work with the community to value engineer selected priorities, keeping the community-driven amenities' vision intact.

Intended Outcomes & Benefits: The Project will immediately improve safety for youths at the existing playground. Phase I of the project is nearly shovel-ready. If awarded by DOLA in November of 2024,

repairs to the retaining wall will be under construction as soon as weather allows in June 2025. Importantly, Phase II park improvements cannot progress without Phase I. The retaining wall has deteriorated to the point that any work in the playground risks imminent failure.

Phase II of the project will quickly start after Phase I, following final community input and design. The project's second phase will deploy modern recreational amenities and provide improved ADA access to these new amenities, potentially including river access for residents who have long been cut off from the Eagle River. While the community provided significant input on recreational amenities as part of the 2023 LBP Plan, the final design and amenities of the park will be determined by this last community-driven process. Minturn, EVOM, and the design team will start community visioning conversations with what types of amenities **could** fit in the park space from the LBP Plan, such as universal playground equipment, ADA river access, a river trail with education signage, additional seating, a multi-purpose court, and improved interior road access. The community-driven design will result in expanded, equitable outdoor recreational opportunities for Minturn's youths and foster increased community vitality. Finally, the design process will explore how to create ADA access to the river trail, providing residents of the Town with an amenity they lack due to the impacts of the Eagle Mine Superfund, located one mile south of Minturn.

Minturn's expanded engagement and outreach process will increase equitable outcomes in the final project. Public meetings will be held at the park and include elements to entice resident engagement, like music and food. To ensure residents are aware of outreach events, EVOM and Minturn staff will develop collateral, including bi-lingual door hangers, social media messaging, and posts on Minturn's website, and ask community partners to share them with their stakeholders. The partnership with EVOM will benefit the project's outcomes and foster an ongoing relationship with EVOM that will allow Minturn to create new communication pathways with Latino residents, strengthening future projects.

The park is within walking distance of downtown Minturn, most residential homes, and businesses along State Highway 24. The Project will allow Minturn to enhance the community's appeal and improve the quality of life for existing residents, making it less likely for residents to leave in search of better amenities and allowing Minturn to reverse its population losses. Park investments will also generate a high quality of life, attracting visitors, businesses, and entrepreneurs. The National Recreation and Park Association's 2022 study on the Economic Impact of Local Parks found local parks spur increased sales tax at local restaurants/bars and hotels and create economic activity that goes well beyond the initial investment. Minturn's economy depends on visitors who supplement the market for local businesses. The Town is at risk of losing businesses that provide essential tax revenue, jobs, and services without ample visitation. A modern and accessible park will help sustain existing businesses, create additional reasons for families to live in Minturn, and expand regional travel to the community, helping to spur new investment and increase the tax base.

The project will also study how to provide ADA access to the Eagle River and how to improve the social trails that provide fishing access. In addition, project partners will work with Minturn to integrate bi-lingual signage about local ecosystems, water quality mitigation, and the importance of healthy rivers. River access in Minturn is rare due to the 235-acre [Eagle Mine Superfund Site](#) (one mile south of the Town), which resulted in high levels of metals in soils, surface water, and groundwater. The State of Colorado, the US EPA, and the property owner engaged in remediation and monitoring efforts, which resulted in significant water quality improvements. However, as a condition of the Eagle River Restoration Project, the Town can only access the river at three points and must maintain a natural riparian zone in all other locations. Little Beach Park is one of the three approved sites by the Department of Public Health and Environment.

Partnerships

Minturn has four committed partners: EVOM, the Eagle River Coalition (ERC), the Eagle River Fund, and the Vail Valley Mountain Trails Alliance (VVMTA). EVOM is a GOCO Generation Wild Coalition led

by the Walking Mountains Science Center, whose mission is to provide equal access to outdoor spaces and opportunities for youth and families in the Eagle Valley. EVOM will partner with the Town to gain additional public input for the project and build a replicable outreach model for Minturn to use going forward. The Town and EVOM have agreed to a scope for outreach, which the Town can share upon request. See the **Continued Engagement Section** of the application for an in-depth discussion of the partnership.

The ERC's mission is to advocate for the health of the Upper Colorado and Eagle River basins through research, monitoring, projects, and education. Minturn's partnership with ERC will support a request to the Eagle River Fund for bi-lingual signage and to secure funding for native riparian vegetation intended to provide erosion control measures by stabilizing the northern riverbank. ERC has committed to helping Minturn by coordinating and overseeing at least one community volunteer-driven river remediation project to install riparian vegetation and provide experiential education to participants.

The Eagle River Fund (ERF) is a long-term field of interest fund intended to support eligible collaborative projects that protect water quality and quantity, as well as the health of natural riparian infrastructure in the Eagle River Watershed. The project aligns with the ERF's vision to protect local waterways for decades due to the bi-lingual educational signage, improved river trail accessibility, and the opportunity to engage the community directly through a volunteer planting project envisioned to mitigate streambank erosion. While the Town will have to apply to the fund through an invitation-only process, leadership at the ERF believes the Project will be strongly competitive and has provided a letter of support detailing why they are encouraging Minturn to be included in the applications requesting ERF support in the upcoming funding cycle.

The VVMTA's mission is to connect the community to the outdoors through sustainable recreation. The VVMTA advocates for soft surface trails, manages trail stewardship programs, maintains and builds trails, coordinates and trains volunteers, educates outdoor recreational users, and creates opportunities to access the outdoors. The non-profit has committed to helping Minturn and the ERC determine the best route for a possible ADA trail to the river, strategize on improving social trails along the riverbank to promote responsible river access and coordinate volunteers to build future trails at Little Beach Park outside of this grant application.

The Town anticipates integrating all four partners into future projects, strengthening Minturn's outreach, improving outcomes for Latino residents and the Eagle River, and expanding outdoor recreational trails through community volunteer events. All four partners provided letters confirming their support and role in the project. The Town will also invite other community partners, such as the Minturn Community Fund, the [Minturn Family Enrichment Center](#), and Eagle County, to participate, support community outreach and engagement, and help guide the project.

GOCO Values

The goals and intended outcomes of Minturn's Little Beach Project strongly align with GOCO's core values. The project promotes *Outdoor Stewardship, Youth Connections, Community Vitality, and Equitable Access* for the residents, regional visitors, and businesses of the Minturn community. The Project also establishes new outreach strategies and relationships for the Town to replicate in future community projects and programs.

The Town will promote ***Outdoor Stewardship*** by working with the Eagle River Coalition (ERC) to apply to the Eagle River Fund to stabilize the northern riverbank, reduce runoff, and design and install bi-lingual educational signage in the park and along the river. The signage will focus on strategies to promote river health and the success of the Eagle River Restoration Project. Finally, the ERC will manage an educational river restoration volunteer event with support from Town staff. These events will involve working with the

community to plant native species to improve the riparian zone outside the potential ADA path and existing social trails.

To increase **Youth Connections**, Minturn will revitalize Little Beach Park, replacing unsafe and outdated outdoor recreation amenities with modern, accessible features. Youth connection to outdoor recreation is essential for Minturn since 18.7% of residents are under 18. Additionally, the significant loss in population (almost 15%) since 2010 makes investing in projects that entice families to stay or relocate to Minturn necessary for the community's long-term sustainability. By working with EVOM on additional outreach, the Town will intentionally seek out the voices of youth and families to determine final project elements, connecting youth to the outdoor amenities at Little Beach Park.

The project will increase **Community Vitality** by improving a regional park and community asset within walking distance of neighborhoods and downtown Minturn. Solidifying Little Beach Park as a regional amenity will entice more visitors to the area, supporting local businesses, drawing more attendees to special events at the amphitheater, and allowing the Town to hold more events at the park. Since outdoor amenities will be chosen through an inclusive, community-driven planning process, the project will increase the quality of life for Minturn's residents, who will select the final recreational features.

Minturn's project will emphasize building ADA recreational amenities and forge a new partnership with EVOM, creating **Equitable Access** to outdoor recreation for this project and future projects. The park lacks ADA access, and the playground equipment lacks accessible features. The Town will explore how to create additional ADA access to the playground and amphitheater through proposed improvements to the interior road and explore ADA access to the river. The new playground space will be fully accessible and inclusive for users of all abilities.

By reopening the public input process and working with EVOM, Minturn has a unique chance to discover how to promote safe outdoor recreation, responsible river access, and increase exercise among the Town's marginalized youth. The Town intends to continue the partnership with EVOM to integrate Latino voices and expand equitable access to Minturn's amenities and services.

Closing:

Minturn's Little Beach Park Project will protect the existing parkland, build vibrant new amenities for residents and rural neighbors, reinvigorate the local economy, and explore how to connect community members to the Eagle River, which they lack due to the Eagle Mine Superfund Site. The new park will provide improved ADA access to recreational amenities and increase the quality of life for families. The Town will support local businesses, entice residents to remain in Minturn, and protect and expand the local tax base. Finally, Minturn will build a long-term partnership with EVOM and create a replicable model for increasing meaningful communication with the Latino population. GOCO's investment in Minturn will immediately benefit current residents by ensuring a safer park while providing and fostering longer-term positive impacts. Little Beach Park will be transformed into a regional treasure, but the community needs GOCO's support to realize this vision.

PROJECT BUDGET & DETAILS

APPLICATION SCOPE OF WORK

Source of Funds (CASH)	Date Secured	GOCO Funds	Matching Funds
	12/6/24	\$475,291.00	
Town of Minturn, Colorado	9/3/24		\$131,197.00
Business and Community Donations for Additional Recreational Amenities	6/1/25		\$5,000.00
Eagle River Fund	2/1/25		\$12,000.00
DOLA EIAF Grant	12/1/24		\$147,000.00
Source of Funds (IN-KIND)			
Town of Minturn, Colorado	9/3/24		\$20,000.00
	subtotal	\$475,291.00	\$315,197.00
TOTAL SOURCE OF FUNDS			\$790,488.00

Use of Funds (CASH)	Description	GOCO Funds	Matching Funds	Total Funding
Design				
<i>TBD</i>	Final Design/Drawings	\$30,000.00	\$0.00	\$30,000.00
<i>EVOM</i>	Bi-Lingual Outreach	\$5,000.00	\$5,000.00	\$10,000.00
Special Event	River Remediation and Bank Stabilization		\$4,000.00	\$4,000.00
Construction				
<i>TBD</i>	Playground equipment	\$210,924.00	\$0.00	\$210,924.00
<i>TBD</i>	Multiuse Court	\$33,270.00	\$0.00	\$33,270.00
<i>TBD</i>	Demolish Existing Bathrooms	\$10,000.00	\$9,500.00	\$19,500.00
<i>TBD</i>	Repair Retaining Wall	\$0.00	\$147,000.00	\$147,000.00
<i>TBD</i>	TBD Park Improvements	\$112,025	\$59,597.00	\$171,622.00
<i>TBD</i>	Reconstruct Interior Road Access	\$74,072.00	\$0.00	\$74,072.00
<i>TBD</i>	Seating Area	\$0.00	\$62,100.00	\$62,100.00
<i>TBD</i>	Bi-Lingual Signage	\$0	\$8,000.00	\$8,000.00
	<i>subtotal</i>	\$475,291.00	\$295,197.00	\$770,488.00

Use of Funds (IN-KIND)	Description	Matching Funds
In-Kind	Staff Project Management Oversight of Design and Construction	\$20,000.00
	subtotal	\$20,000.00
	GOCO Funds	Matching Funds
	subtotal \$475,291.00	\$315,197.00
TOTAL USE OF FUNDS*		\$790,488.00

** The Total Use of Funds must equal the Total Source of Funds in the section above.*

OTHER LEVERAGED RESOURCES (OPTIONAL)

CASH OR IN-KIND		Description	Total Funding
Cash		Fall Community Picnic	\$1,000
In-Kind		Volunteer Support for the River Educational Restoration Volunteer Event	\$720.00
		Eagle River Coalition	\$525.00
		<i>subtotal</i>	<i>\$2,245.00</i>

TOTAL PROJECT VALUE	\$792,733.00
---------------------	--------------

GOCO % of project cost	60%
GOCO % of project value	60%

Budget Narrative - Town of Minturn Little Beach Park Enhancement Project

Source of Funds (\$5,000 Business and Community Donations for Additional Recreational Amenities)

The Town will seek donations from local business and the community throughout 2024 and 2025 to increase community ownership of the project.

Sources of Funds - DOLA EIAF Grant (\$147,000)

The Town has applied to the Colorado Department of Local Affairs (DOLA EIAF) to repair and stabilize the retaining wall. DOLA has indicated support for the project due to the urgency of the failing wall and its imminent threat to the playground. However, DOLA will not fund the grant unless GOCO awards funding to revitalize Little Beach Park. The Town sought DOLA funding for Phase I of the project, since recreation improvements (Phase II) cannot move forward before the retaining wall is secure.

Sources of Funds – Eagle River Fund (\$12,000)

The Eagle River Fund is encouraging the Town to apply for \$4,000 for plantings for an educational river remediation volunteer event and \$8,000 for bi-lingual signage.

Bi-Lingual Outreach (\$5,000 GOCO and \$5,000 TOM)

Minturn will contract with EVOM to support bi-lingual and youth public outreach efforts to finalize recreational amenities for Little Beach Park.

TBD Park Improvements (\$171,622: \$112,025 GOCO and \$59,597 TOM)

The budget sets aside \$171,622 in funding for undefined park improvements. While many of the park amenities were selected during the Little Beach Park Area Recreation Plan process, additional outreach will occur in 2024 and early 2025, that will likely result in additional recreational amenities. As part of this line item, the Town will ask residents about ADA river access and improvements to social trails along the river for fishing and river access.

If the community identifies project elements that are significantly more expensive, the Town will follow the process below to ensure that community priorities drive the final budget:

- a. Minturn will pursue funding from additional grant resources such as the Colorado Health Foundation or the Gates Foundation.
- b. Raise local funding from businesses and community donations.
- c. The Town will consider if it can increase its local match in the 2025 budget cycle.
- d. Working with the community to value engineer project elements while still maintaining the community's vision.

In-Kind Use of Funds (\$20,000 TOM)

Staff at Minturn will oversee the design and construction of the project at an estimated \$20,000.

Other Leveraged Resources (\$1,000 TOM)

The Town will hold a communitywide picnic in August to gain additional feedback on recreational amenities (\$1,000).

Other Leveraged Resources (\$720 Volunteers)

Volunteer support for the river educational restoration volunteer event. The event will have six volunteers participating for 4 hours and 30 per hour.

Other Leveraged Resources (\$525 ERC)

ERC staff will dedicate up to 15 hours of time for an educational river restoration volunteer event. Their time will include creating and posting marketing materials, managing waivers and registration, providing planting supplies like gloves and tools, consulting regarding orders and quantities of vegetation, and spearheading the event.

Vision/Design/Construction Timeline

The Town of Minturn (TOM) is already underway with additional community visioning. The Town is partnering with Eagle Valley Outdoor Movement (EVOM) and will have a member of EVOM's staff work as part of the project team. The Town will hire an Engineering and Design firm (s) that will integrate engagement into the final design. The project team expects the updated outreach/design process to be completed in October 2025, with construction underway by May 2026 and completed by October 2026.

The Town anticipates following the schedule below:

- November 2024: Fall picnic in the park with support from EVOM to obtain additional feedback.
- December 8, 2024: GOCO awards funds to TOM.
- January 2025: Contract with EVOM for Latino outreach and planning support.
- January 2025: Contract with a design and engineering firm that specializes in working with diverse communities and river mitigation projects.
- February 2025: Bid for Retaining Wall
- February 2025: Kick-off meeting with the Project Team to include EVOM.
- March 2025: Create surveys in Spanish (EVOM) and English (TOM).
- March 2025 – April 2025: Survey results gathered by TOM and EVOM.
- May 2025: Onsite meeting at Little Beach Park (TOM, EVOM, and design firm). 30% designs with potential park layouts and options included in English and Spanish. TOM and EVOM will distribute surveys and hold a public listening session.
- June 2025-August 2025: Retaining Wall stabilized.
- June 2025: Second onsite meeting at Little Beach Park (TOM, EVOM, and Design Firm) to present 60% designs. TOM and design consultant will have incorporated feedback from the first onsite meeting and surveys.
- August 2025: 90% design review of Little Beach Park with Project Team.
- October 2025: 100% design of Little Beach Park.
- November 2025: Design put out to bid.
- January 2026: TOM awards construction bid.
- *April 2026: Mobilization of construction equipment.
- *May 2026: Groundbreaking for community.
- *October 2026: Finished construction of all park elements.
- October 2026: Community celebration held at Little Beach Park

* Minturn will partner CPW to follow Best Management Practices for instream work associated with the project. As such in stream work will take place only through August 15 - September 30 annually. Additionally, Minturn will minimize heavy construction or earth moving activities during the winter months to avoid auditory disturbance for wintering elk (December 1- April 15 annually). Minturn will also include educational signage relative to human-moose conflict and monitor and treat for noxious weeds post site disturbance.

TOWN OF MINTURN, COLORADO
RESOLUTION 50 – SERIES 2024

**RESOLUTION AUTHORIZING AND SUPPORTING A COMMUNITY IMPACT
GRANT APPLICATION TO GREAT OUTDOORS COLORADO
FOR THE LITTLE BEACH PARK ENHANCEMENT PROJECT**

WHEREAS, the Town of Minturn ("Town") is a political subdivision of the State of Colorado, and therefore an eligible applicant for the community impact grant program offered by Great Outdoors Colorado ("GOCO"); and

WHEREAS, Great Outdoors Colorado invests a portion of Colorado Lottery proceeds to help preserve and enhance the state's parks, trails, wildlife, rivers and open spaces awarding competitive grants to local governments and land trusts and makes investments through Colorado Parks and Wildlife; and

WHEREAS, the Town will undertake a community outreach process partnering with Eagle Valley Outdoor Movement (EVOM) to undertake a bi-lingual, youth driven public outreach process to determine final amenities at Little Beach Park; and

WHEREAS, the Town is highly committed to protecting existing outdoor recreation at Little Beach Park the community's only park and expanding outdoor recreation with new and updated park equipment, amenities and services for the residents of Minturn; and

WHEREAS, the Town has been invited by GOCO Program Officer to submit a Community Impact Fund Grant Application, after having received a favorable review of the Town's concept paper, to request a total of \$475,291 in GOCO funding with a Town of Minturn cash match of \$131,197 and an in-kind match of \$20,000, community donations of \$5,000, an Eagle River Fund contribution of \$12,000, and a Colorado Department of Local Affairs grant award of \$147,000 for the design and construction of the improvements for Little Beach Park; and

WHEREAS, the Town Council will commit revenue from the Construction Use Tax via the Capital Improvement Fund for the ongoing maintenance of the park facilities.

WHEREAS, the Minturn Town Council finds that the Little Beach Enhancement Project will promote the health, safety and general welfare of the Minturn community.

NOW, THEREFORE, BE IT RESOLVED BY THE TOWN OF MINTURN, COLORADO, THAT:

Section 1. The above recitals are hereby incorporated as findings by the Town.

Section 2. The Town Council of the Town of Minturn supports the Community Impact Fund Grant Application and will authorize the expenditure of funds necessary to meet the terms and obligations of any grant awarded pursuant to a Grant Agreement with GOCO.

Section 3. If the grant is awarded, the Town Council hereby authorizes the Mayor or his designee to sign the grant agreement with Great Outdoors Colorado.

Section 4. This resolution to be in full force and effect from and after its passage and approval.

INTRODUCED, READ, APPROVED, RESOLVED, AND ADOPTED THIS 3rd DAY OF SEPTEMBER, 2024.



Earle Bidez, Mayor

Attests:



Jay Brunvand, Town Clerk/Treasurer





COLORADO PARKS & WILDLIFE WILDLIFE REVIEW

The applicant is responsible for addressing any environmental impacts associated with the project, including securing all necessary permits, licenses, clearances, and environmental analysis necessary to comply with local, state, or federal law.

Applicant

Name: **Town of Minturn**

Email: **manager@minturn.org**

Title: **Town Manager**

Phone: **970-827-5645**

Please consult with your local Colorado Parks & Wildlife (CPW) District or Area Manager to complete the table below and associated narrative questions as appropriate.

CPW Representative

Name: **Matt**

Email: **matt.yamashita@state.co.us**

Title: **Area Wildlife Manager**

Phone: **970.947.2927**

☐ CPW representative, check this box if no significant environmental considerations exist and skip the remainder of the form.

Environmental Considerations	Not Applicable	Negligible Impacts	Minor Impacts	Significant Impacts	Insufficient Information
Plant/animal species of special concern; state/federal listed or proposed listed	<input type="checkbox"/>	<input checked="" type="checkbox"/>	<input type="checkbox"/>	<input type="checkbox"/>	<input type="checkbox"/>
Unique or important habitat (<i>i.e. migration, winter-range, reproductive considerations</i>)	<input type="checkbox"/>	<input type="checkbox"/>	<input checked="" type="checkbox"/>	<input type="checkbox"/>	<input type="checkbox"/>
Unique or important aquatic habitat (<i>i.e. fish passage, spawning habitat</i>)	<input type="checkbox"/>	<input checked="" type="checkbox"/>	<input type="checkbox"/>	<input type="checkbox"/>	<input type="checkbox"/>
Water quality/quantity – surface and ground water considerations	<input type="checkbox"/>	<input checked="" type="checkbox"/>	<input type="checkbox"/>	<input type="checkbox"/>	<input type="checkbox"/>
Stream flow characteristics	<input checked="" type="checkbox"/>	<input type="checkbox"/>	<input type="checkbox"/>	<input type="checkbox"/>	<input type="checkbox"/>
River corridors/lakes/ponds/ seasonal water ways	<input type="checkbox"/>	<input checked="" type="checkbox"/>	<input type="checkbox"/>	<input type="checkbox"/>	<input type="checkbox"/>
Wetlands/floodplains	<input type="checkbox"/>	<input checked="" type="checkbox"/>	<input type="checkbox"/>	<input type="checkbox"/>	<input type="checkbox"/>
Storm water runoff	<input type="checkbox"/>	<input checked="" type="checkbox"/>	<input type="checkbox"/>	<input type="checkbox"/>	<input type="checkbox"/>
Sedimentation	<input type="checkbox"/>	<input checked="" type="checkbox"/>	<input type="checkbox"/>	<input type="checkbox"/>	<input type="checkbox"/>
Disturbances to neighboring properties	<input type="checkbox"/>	<input checked="" type="checkbox"/>	<input type="checkbox"/>	<input type="checkbox"/>	<input type="checkbox"/>
Soil/erosion	<input type="checkbox"/>	<input checked="" type="checkbox"/>	<input type="checkbox"/>	<input type="checkbox"/>	<input type="checkbox"/>
Introduction or promotion of non-native species	<input checked="" type="checkbox"/>	<input type="checkbox"/>	<input type="checkbox"/>	<input type="checkbox"/>	<input type="checkbox"/>
Environmental disturbances during construction	<input type="checkbox"/>	<input type="checkbox"/>	<input checked="" type="checkbox"/>	<input type="checkbox"/>	<input type="checkbox"/>

MITIGATION Please describe any necessary mitigation measures under consideration for impacts exceeding negligible (consider alternative design or trail route system; screening users from wildlife area, protection of critical habitat, channeling use through less sensitive habitat areas; re-vegetation of disturbed areas and control of invasive species; management of users and related activities with signs, fencing, and education programs; consideration of runoff when selecting project materials, such as uncured concrete to encourage seepage; comprehensive storm water runoff plan).

CPW recommends implementation of Best Management Practices for any instream work associated with this project. Typical work windows for applicable trout species are August 15 - September 30 annually. Additionally, it is recommended to avoid or minimize heavy construction or earth moving activities during the winter months to avoid auditory disturbance for wintering elk (December 1 - April 15 annually). CPW also recommends educational signage relative to human-moose conflict. CPW plans to work with the Town to provide information etc. in order to fulfill this recommendation. Lastly, CPW recommends the Town of Minturn also monitor and treat for noxious weeds post site disturbance.



BENEFIT Please describe any anticipated positive impacts on wildlife and/or sensitive species (consider habitat improvement such as restoration of native habitat, wetlands restoration, erosion reduction, sediment reduction, river corridor clean-up, or plantings with a diversity of species and plant types for habitat restoration, and the reduction or elimination of non-native plant species; education of users through environmental education programs, opportunities for “watchable wildlife,” and wildlife impact monitoring).

CPW anticipates this project will improved fishing access for members of the public, and also provide the opportunity for wildlife viewing.

ENVIRONMENTAL COMPLIANCE The applicant is responsible for adhering to all applicable environmental compliance regulations including, but not limited to Migratory Bird Treaty Act; concurrence with US Fish and Wildlife Service if any federally listed species of concern exist in project area; Clean Water Act section 404; US Army Corps of Engineers 404 permits; raptor buffer guidelines and incorporation of CPW recommended wildlife best management practices; CO Senate Bill 40 (33-5-101-107, CRS 1973 as amended); Colorado Historical, Prehistoric and Archeological Resources Act.

N/A



September 5, 2024

Dear Great Outdoors Colorado Board and Staff,

The Eagle Valley Outdoor Movement (EVOM), is excited to support the Town of Minturn's grant application to engage the community in a planning effort to improve a local park. EVOM is a group of organizations and community members, led by Walking Mountains Science Center, striving to provide equal access to outdoor spaces and opportunities for youth and families in the Eagle River Valley. EVOM is partnering with the Town of Minturn to ensure our Spanish speaking residents have an opportunity to learn about the planning process and provide input for future park improvements.

The project aligns with several goals of EVOM, but specifically to prioritize safe outdoor spaces within walking distance to community member's homes. This park provides opportunities for the community to come together for social and cultural connection. Creating an updated park for local youth and families to enjoy is an unbelievable benefit.

As a partner of this project we will assist the Town of Minturn to accomplish the following:

- Conduct meaningful bilingual community outreach
- Administer a bilingual community survey to gain feedback on park improvements
- Spanish translation at public planning meetings so that all community members can participate
- Increase overall community engagement

The project outlined in their grant application will increase local access to safe outdoor spaces and allow for the community to participate in the planning effort, which will result in ownership of essential gathering spaces. These efforts are important to the EVOM because spending time in nature should be within reach for all.

Sincerely,

Gina Van Hekken
Senior Director of Strategic Initiatives
Walking Mountains Science Center

Teresa Cierco-Lopez
EVOM Manager
Eagle Valley Outdoor Movement



EAGLE RIVER COALITION

Protecting Our Local Watersheds

September 10, 2024

Jackie Miller
Executive Director
Great Outdoors Colorado
1900 Grant St., Suite 725,
Denver, CO 80203

RE: Eagle River Coalition supports Minturn's Little Beach Park Enhancement Project

Dear Ms. Jackie Miller,

I am writing to express our strong support for the Town of Minturn's application to the Great Outdoors Colorado (GOCO) Community Impact Grant program. The Project will support both stabilizing the retaining wall and transforming the outdated and unsafe park into a premier river amenity. Working with the Little Beach Park Area Recreation Plan (LBP Plan) as a framework, the Town will partner with Eagle County Outdoor Moves (EVOM) to expand Latino outreach before finalizing park amenities. Potential park improvements include a modern, accessible playground, demolishing the pit restrooms and replacing them with an ADA accessible trailer styled porta potty, improving internal circulation and ADA access for vehicles, a full multi-use court, additional park seating, ADA river trail access, and river mitigation with bi-lingual educational signage.

Eagle River Coalition advocates for the health of the Upper Colorado and Eagle River watersheds through research, education, and restoration projects. We protect and enhance the natural, scenic, and economic values that our rivers and tributaries provide to the residents, visitors, and wildlife of Eagle County. We support the Project because the park's location near the Eagle River and the

project's intention of integrating riparian restoration work provide powerful opportunities to educate the community and protect its natural resources. Bilingual signage will provide access to education on the importance of healthy riparian areas and enrich the experiences of users from visitors and the local community. The park is an inclusive and accessible hub for recreation, and our support recognizes that the project creates a foundation for long-term efforts of advancing water quality efforts with its path, maintaining and increasing watershed education through signage, and thereby growing community stewardship.

The Eagle River Coalition is ready to be engaged and supportive of the Minturn Little Beach Park Enhancement Project moving forward. We proudly commit to partnering with Minturn in planning activities as the Project moves forward and we will use existing communication channels to update the community on the Project as well as engagement opportunities. Please give Minturn's application the highest consideration. Thank you.

Sincerely,

A handwritten signature in black ink, appearing to read "MSH Smith".

Melanie Smith

Development Director, Eagle River Coalition



EAGLE RIVER COALITION

PO Box 1477, Gypsum CO, 81637 | 970.827.5406 | eagleriverco.org



September 10, 2024

Jackie Miller
Executive Director
Great Outdoors Colorado
1900 Grant St., Suite 725,
Denver, CO 80203

RE: Expressing Support for Minturn's Little Beach Park Enhancement Project

Dear Ms. Jackie Miller,

I am writing to express our support for the Town of Minturn's application to the Great Outdoors Colorado (GOCO) Community Impact Grant program. The Project will support both stabilizing the retaining wall and transforming the outdated and unsafe park into a premier river amenity. Working with the Little Beach Park Area Recreation Plan (LBP Plan) as a framework, the Town will partner with Eagle County Outdoor Moves (EVOM) to expand Latino outreach before finalizing park amenities. Potential park improvements include a modern, accessible playground, demolishing the pit restrooms and replacing them with an ADA accessible trailer styled porta potty, improving internal circulation and ADA access for vehicles, a full multi-use court, additional park seating, ADA river trail access, and river mitigation with bi-lingual educational signage.

The Eagle River Fund is a long-term field of interest fund intended to support eligible collaborative projects that protect water quality and quantity, as well as the health of natural riparian infrastructure in the Eagle River Watershed. On behalf of the Fund, I wish to express support for the Project because it is an example of the type of project that is anticipated to present as competitive in the Eagle River Fund application process requesting financial support.



I believe the Project to be strongly competitive because it is a collaborative effort with multiple anticipated funding sources; it realizes items that have been documented as in line with Minturn community values through the Town's long-term planning processes; and it includes elements that are anticipated to benefit water quality and improve natural infrastructure. These elements – specifically the bi-lingual educational signage, improved river trail accessibility, and the opportunity to engage the community directly through a volunteer planting project envisioned to mitigate streambank erosion – are in line with the Eagle River Fund's vision to protect local waterways for decades to come.

The Eagle River Fund is supportive of the Minturn Little Beach Park Enhancement Project moving forward. We commit to encouraging the Project to be included in applications requesting Eagle River Fund support in its upcoming funding cycle. We hope that you will give Minturn's application strong consideration. Thank you.

Sincerely,

A handwritten signature in black ink that reads "MSH Smith". The initials "MSH" are written in a stylized, cursive manner, followed by the name "Smith" in a more legible, cursive script.

Melanie Smith

Operations Manager, Eagle River Fund



Vail Valley Mountain Trails Alliance
PO Box 3986
Avon, CO 81620
www.vvmta.org

September 10, 2024

Jackie Miller
Executive Director
Great Outdoors Colorado
1900 Grant St., Suite 725,
Denver, CO 80203

RE: VVMTA's support for Minturn's Little Beach Park Enhancement Project

Dear Ms. Jackie Miller,

I am writing to express our strong support for the Town of Minturn's application to the Great Outdoors Colorado (GOCO) Community Impact Grant program. The Project will support both stabilizing the retaining wall and transforming the outdated and unsafe park into a premier river amenity. Working with the Little Beach Park Area Recreation Plan (LBP Plan) as a framework, the Town will partner with Eagle County Outdoor Movement (EVOM) to expand Latino outreach before finalizing park amenities. Potential park improvements include a modern, accessible playground, demolishing the pit restrooms and replacing them with an ADA accessible trailer styled porta potty, improving internal circulation and ADA access for vehicles, a full multi-use court, additional park seating, ADA river trail access, and river mitigation with bi-lingual educational signage.

The VVMTA's mission is to connect our community to the outdoors through sustainable recreation. Little Beach Park is a growing hub for the Minturn community that with this support, will provide a stronger, inclusive and accessible recreation area for the community.

The VVMTA is excited to be a partner for this project. We are committed to providing our expertise and resources to help Minturn and the Eagle River Coalition determine the best route for an ADA trail to the river, strategize on improving social trails along the riverbank to promote responsible river access, and coordinate volunteers to build future trails at Little Beach Park.

We strongly support Minturn's application. Please give Minturn's application the highest consideration. Thank you.

Sincerely,

Executive Director
ernest@vvmta.org



September 5, 2024

Jackie Miller
Executive Director
Great Outdoors Colorado
1900 Grant Street, Suite 725
Denver, CO 80203

RE: Minturn Community Fund supports Minturn's Little Beach Park Enhancement Project

Dear Ms. Miller,

I am writing to express our strong support for the Town of Minturn's application to the Great Outdoors Colorado (GOCO) Community Impact Grant program. The Project will support both stabilizing the retaining wall and transforming the outdated and unsafe park into a premier river amenity. Working with the Little Beach Park Area Recreation Plan (LBP Plan) as a framework, the Town will partner with Eagle County Outdoor Moves (EVOM) to expand Latino outreach before finalizing park amenities. The potential park improvements include a modern, accessible playground, demolishing the pit restrooms and replacing them with an ADA accessible trailer styled porta potty, improving internal circulation and ADA access for vehicles, a full multi-use court, additional park seating, ADA river trail access, and river mitigation with bi-lingual educational signage.

The Minturn Community Fund (MCF) is a non-profit organization that was founded over 20 years ago and exists to connect the people, enhance the lives, and preserve the culture of Minturn. We have partnered with the Town of Minturn since our inception and value the many collaborative projects and programs we have produced together over the years, most of which happen at Little Beach Park. The park and amphitheater are more than just amenities, they are the heart and soul of Minturn, providing a gathering place for our free summer concert series, traveling children's theater workshops, interactive drum circles, aerial arts performances, winter "rail jam" expos, Boy Scout court of honor ceremonies, and many memorial services and weddings. To say that Little Beach Park is the center of all happenings in Minturn is an understatement. It encourages grass-root, intercultural, and multi-generational connections and is truly a community gem.

The MCF is ready to be engaged and supportive of the Minturn Little Beach Park Enhancement Project moving forward. We commit to take part in planning activities as the project moves forward, use existing communication channels to update the community on the project, and will work with the Town to fundraise for additional recreational amenities. Please give Minturn's application the highest consideration.

Thank you.

Sincerely,

A handwritten signature in black ink, appearing to read "Diana Scherr", written over a horizontal line.

Diana Scherr, President of the Board

Minturn's Little Beach Park Enhancement Project Pictures



Failing Retaining Wall, Playground, and Interior Driveway



Existing Multi-Use Court



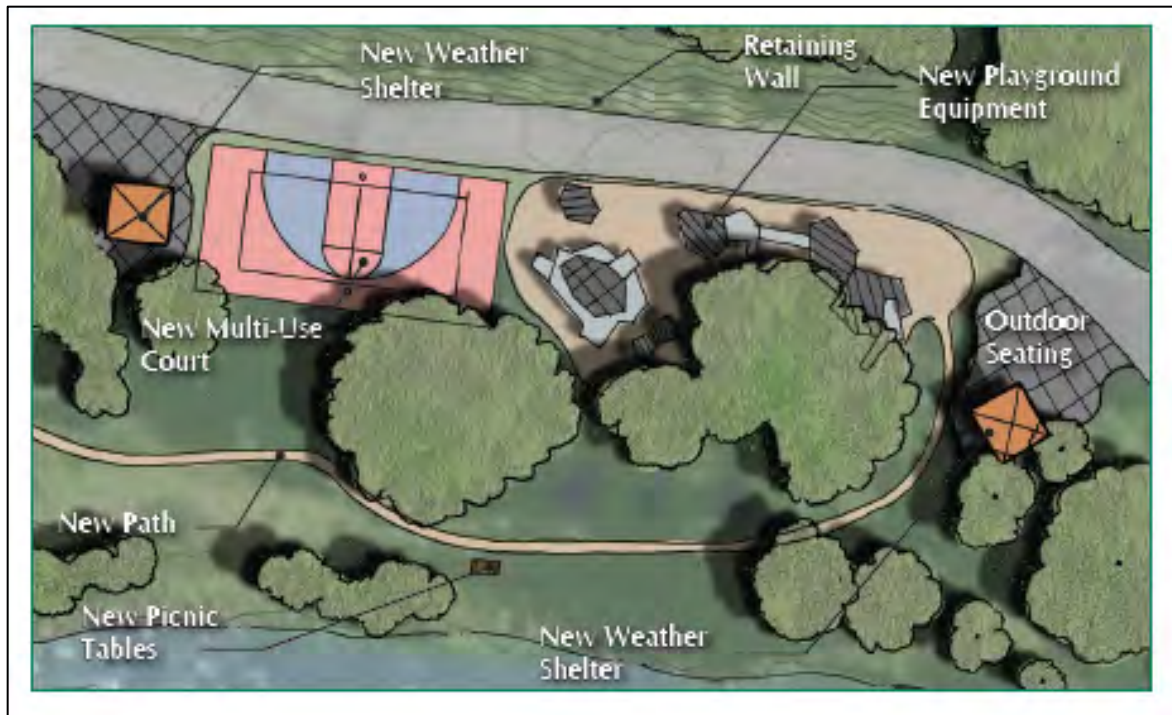
Non-Code Compliant Playground Structure



Town Manager Metteer discuss river restoration and ADA river access with the Eagle River Coalition



Small Parking Lot – Future ADA Access



Phase I and Phase II of Little Beach Park Concept Plan



MINTURN / LITTLE BEACH PARK AREA MAP



MINTURN / LITTLE BEACH PARK
AREA MAP



Dowds
Junction

Downtown Minturn

Little Beach Park

Minturn

Minturn

White River
National Forest

Martin Creek

Grouse Creek



VI. Plan Recommendations

Plan Recommendations for Specific Facilities

Little Beach Park

1. Eliminate the driveway and small parking lot on the north side of the Park. Convert these spaces to park uses.
2. Upgrade or replace the bathrooms with new ones.
3. Update the playground equipment.
4. Create a new multi-use court in the location of parking and the current bathrooms.
5. Add additional park amenities such as picnic tables, benches, and site furnishings.
6. Enhance access to Eagle River while promoting safety during high water times of year.
7. Confirm stability of timber retaining wall.
8. Integrate educational elements into the Park.



VI. Plan Recommendations

Little Beach Amphitheater

1. Expand and add more lawn seating area.
2. Re-grade the access path from the upper parking lot to the stage so it is not as steep for service, operations, and for guests. Make it ADA accessible.
3. Develop new bathroom and concessions facilities at the top, near the main parking lot.
4. Create a main entrance that is a clear point of arrival into the amphitheater.
5. Add a green room to the back of the stage that is covered and provides shade and cover from rain.
6. Add power to the large parking lot.
7. Add power plugs on the stage.
8. Consider a loading dock on the west side of the stage.
9. Add vehicle access from the west for loading and unloading.
10. Enhance and formalize the main upper parking lot serving the Amphitheater.