



To: Honorable Mayor and City Council Members

From: Diana Wheeler, Interim Community Development Director

Date: Submitted on February 25, 2025 for the **March 3, 2025**
Regular Council Meeting

Agenda Item: Consideration of Final Plat

Signed by:

3C30A325FBE844C...

Department Recommendation:

To approve the subdivision related plats as stated below.

Executive Summary:

The Milton Subdivision Regulations require that the Mayor and City Council approve all Final Plats, Final Plat Re-recording, Revisions and Minor Plats once the matter has been reviewed and certified by the Community Development Director in accordance with the Subdivision Regulations.

1. The Final Plat for **Echo at Crabapple** described herein consists of **23** single-family lots located along Crabapple Road on a total of **4.885** acres. This development includes one common area fronting Crabapple Road and four civic areas within the community.

Funding and Fiscal Impact:

None.

Alternatives:


Do not approve.

Legal Review:

None – not required

Concurrent Review:

Steven Krokoff, City Manager

DocuSigned by:

9E6DD808EBB74CF...

SERVICE • TEAMWORK • OWNERSHIP • LEADERSHIP • RURAL HERITAGE

2006 Heritage Walk, Milton, GA 30004 | 678.242.2500 | facebook.com/thecityofmiltonga | info@miltonga.gov | www.miltonga.gov



New Business Agenda Plats Staff Memo

Attachment(s):

Plat List, Location Map, Plats

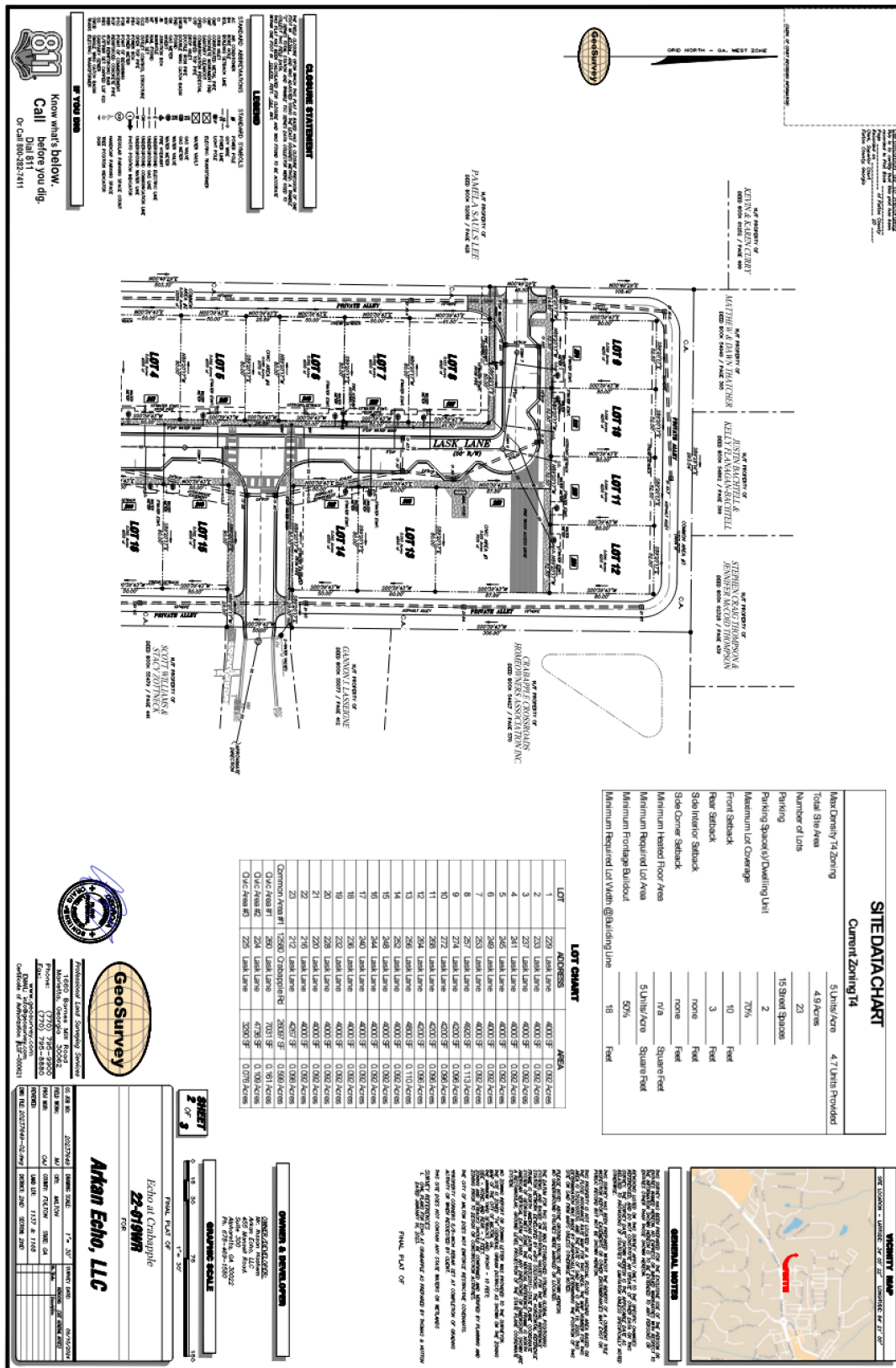
Name of Development / Location	Action	Comments / # lots	Total Acres	Density
Echo at Crabapple Crabapple Rd. LL 1137 & 1168 Dist. 2 Sec. 2	Final Plat	23 <i>Single-Family Lots</i>	4.885 Acres	4.70 Units /Acre



Echo at Crabapple Final Plat

[illegible]

Echo at Crabapple Final Plat



Echo at Crabapple Final Plat

[illegible]