



# AGENDA REPORT

Signed by:

*Kathy Stallard*

3F6C37ECBF854B1...

MEETING DATE:	April 13, 2026	Regular
DEPARTMENT:	Public Works	Sara Leaders, Community Development and Public Works Director
SECTION OF AGENDA:	Consent Agenda	
AGENDA ITEM TITLE:	Approval of an Intergovernmental Agreement between the City of Milton and Fulton County for Water Line Relocation on the Cox Road at King Road Intersection Improvement Project	
STATEMENT OF PURPOSE:	<p>The purpose of this agenda item is to authorize an Intergovernmental Agreement between the City and Fulton County to facilitate the efficient relocation and adjustment of existing County water infrastructure impacted by the Cox Road and King Road intersection improvement project. As part of the project, a Fulton County water line must be relocated to accommodate planned construction activities.</p> <p>This agreement establishes a framework for the City to perform the necessary water line installations, adjustments, and relocations as part of its construction contract, with Fulton County providing reimbursement for the associated costs. Incorporating this work into the City's project ensures a coordinated and streamlined construction process, minimizes potential delays, and avoids disruptions that could arise from separate utility projects.</p>	
FINANCIAL IMPACT:	Estimated Reimbursement amount of \$231,606 from Fulton County	
RECOMMENDED ACTION:	Approval of this agreement supports cost-effective project delivery, maintains the construction schedule, and ensures that all necessary infrastructure improvements are completed in a timely and efficient manner.	

## **BACKGROUND:**

The construction of an intersection improvement project at Cox Road and King Road requires relocation of a Fulton County water line. Fulton County reviewed the project and requested the water line work be included in the City's construction project.

## **ANALYSIS:**

This Intergovernmental Agreement provides for reimbursement to the City for the new installations, adjustments, and relocations of the County's facilities that will be completed by the City's project. This approach allows the work to be completed in an economical and efficient manner without disruption to the project construction and schedule.

## **STAFF RECOMMENDATION:**

Approval



**REVIEWS & APPROVALS:**

**Financial Review:** Stacey Inglis, Deputy City Manager – April 6, 2026

**Legal Review:** Greg Mayfield, Jarrad & Davis, LLP – March 25, 2026

**Concurrent Review:** Steve Krokoff, City Manager -

DocuSigned by:

*Stacey Inglis*

BD7A72CDFFA440F...

DocuSigned by:

*Steven Krokoff*

9E6DD808EBB74CF...

**ATTACHMENTS:**

Intergovernmental Agreement

Fulton County water plans

Fulton County cost estimate

**INTERGOVERNMENTAL AGREEMENT  
BETWEEN FULTON COUNTY, GEORGIA  
AND CITY OF MILTON, GEORGIA**

**For Cox Road at King Road Intersection Improvement Project**

**THIS INTERGOVERNMENTAL AGREEMENT** (this “**IGA**”) is executed as of the \_\_\_\_\_ day of \_\_\_\_\_, 2026, by and between **CITY OF MILTON, GEORGIA**, a municipal corporation of the State of Georgia (“**City**”), and **FULTON COUNTY, GEORGIA**, a political subdivision of the State of Georgia (“**Fulton County**”). The term “**Party**” refers individually to either City or Fulton County and the term “**Parties**” refers to both City and Fulton County.

**WHEREAS**, City has undertaken a project for the Cox Road at King Road Intersection Improvement Project along Cox Road and King Road (the “**Project**”) through its competitive bidding procedures; and

**WHEREAS**, Fulton County has the following utility (water and sewer) facilities which must be adjusted, added, or relocated and provided connection along the new roadway as a result of the proposed Project (hereinafter called the “**Utilities Relocation**”); the facilities include fire hydrants, a water main, water meters, valve boxes, and sewer manholes as shown on construction plans for the Project; and

**WHEREAS**, Fulton County does not have adequate equipment or staff to adjust or relocate its facilities or for other reasons considers it advantageous to have this work included in City’s construction contract; and

**WHEREAS**, the plans and specifications for the Utilities Relocation (hereinafter called the “**Plans**”) have been approved by both City and Fulton County and are attached hereto and incorporated herein as **Exhibit “A”**; and

**WHEREAS**, the Constitution of the State of Georgia provides, in Article IX, Section III, Paragraph I, Subparagraph (a), that any county or municipality of the State of Georgia may contract for any period not exceeding 50 years, with each other or with any other public agency, public corporation, or public authority for the provision of services, or for the joint or separate use of facilities or equipment when such contracts deal with activities, services, or facilities which the contracting parties are authorized by law to undertake or provide; and

**WHEREAS**, Fulton County and City desire to enter into this IGA wherein City, through its contractor, can adjust and relocate Fulton County’s facilities in an economical and efficient manner without disruption to the Project; and

**WHEREAS**, as consideration for City adjusting, adding, or relocating Fulton County’s facilities, Fulton County will reimburse the cost to City; and

**WHEREAS**, Fulton County and City have determined that this IGA serves the best interest of all Parties and their citizens by improving public infrastructure.

**NOW THEREFORE**, incorporating the foregoing recitals, and in consideration of the mutual promises, covenants, and undertakings of the Parties hereinafter set forth, and for the public purposes herein contained and provided for, Fulton County and City covenant, agree, and bind themselves as follows:

**I. PURPOSE.**

This IGA is entered into with the understanding by the Parties that the primary purpose of this IGA is for the Parties to meet the public purpose of transportation and infrastructure improvements, including water facilities.

**II. COMPENSATION AND PAYMENT.**

1. The approximate non-binding pre-let estimate of the total cost of the Utilities Relocation work contemplated under this IGA, subject to change based upon bid acceptance and as otherwise provided herein, is \$231,606.00 (Two Hundred Thirty-One Thousand Six Hundred Six and 00/100 Dollars) based on Fulton County's estimate attached hereto and incorporated herein as **Exhibit "B"**. Fulton County shall pay 100 percent of the final cost of the Utilities Relocation work performed on behalf of Fulton County to City, as such cost is determined pursuant to the terms of this IGA. It is agreed that the compensation specified includes both direct costs and indirect costs, specifically including overhead expenses but excluding attorney's fees, incurred in the performance of this IGA.
2. As soon as practicable after the opening of bids and acceptance of a bid by City, City shall notify Fulton County in writing of the cost amount due City.
3. City will submit invoices for progress payments to Fulton County monthly, quarterly, and/or after completion of the Utilities Relocation work. Fulton County shall pay such invoices within thirty (30) days from receipt until and through completion of the Utilities Relocation work. City shall submit a final invoice to Fulton County as provided herein.
4. In the event there is a change in the Project or it becomes necessary to add pay items that are not provided for in this IGA, City shall negotiate prices with the construction contractor and enter into a supplemental agreement with the contractor for completion of the additional items, after obtaining the written consent of Fulton County on items that affect the Utilities Relocation. Once approved, Fulton County shall bear 100 percent of the additional cost of the Utilities Relocation, including, without limitation, the cost of any improvements or betterments to the water facilities requested by Fulton County, as determined in accordance with this IGA.

5. The final cost of the Utilities Relocation work performed on behalf of Fulton County shall be determined by measurement of the actual quantities of installed materials, including added items as provided herein, multiplied by the actual bid prices. Accordingly, after the Utilities Relocation has been completed and as-built plans have been provided to Fulton County, City shall determine the final as-built cost to be borne by Fulton County and, as the case may be, shall refund to Fulton County or shall request of Fulton County an additional payment in the amount of the difference between the final cost to be borne by Fulton County and the amount which Fulton County has previously paid to City. In the event additional payment is due to City, Fulton County agrees to pay same within thirty (30) days after the invoice is received from City. In the event a refund is due Fulton County, City agrees to pay Fulton County within thirty (30) after the refund amount is determined by City.

### **III. OVERVIEW.**

The work contemplated by this IGA consists of Utilities Relocation as a result of the Project. Upon completion of the work and upon certification by City and Fulton County's Engineers that the work has been completed in accordance with the Plans, Fulton County will accept the adjusted, relocated, and additional facilities and will thereafter operate and maintain said facilities without further cost to City or its contractor. Such maintenance and all operations and activities will meet Fulton County's rules, policies, procedures, standards, and specifications, and be subject to City's requirements related to utility accommodations.

### **IV. FULTON COUNTY RESPONSIBILITIES.**

1. Fulton County agrees that the Project and Utilities Relocation designs are accurately shown in the Plans attached hereto as **Exhibit "A"** to the best of the Parties' knowledge.
2. Subject to the provisions of Section X hereof, Fulton County shall have the right to visit and to inspect the work activities and any reports, drawings, studies, specifications, estimates, maps, and computations related to the work for Fulton County's facilities at any time to ensure they meet Fulton County's rules, policies, procedures, standards, and specifications, and to advise City's Project Manager / Engineer-in-Charge of any observed discrepancies or potential problems.
3. Fulton County shall respond in a timely manner to any issue that may arise during the construction phase. Every effort shall be made not to delay the contractor under any circumstances.
4. Subject to the provisions of Section II hereof, Fulton County is responsible for reimbursing all material and labor costs to City related to the Utilities Relocation for this Project that are completed to the reasonable satisfaction of Fulton County in accordance with the Plans.

**V. CITY'S RESPONSIBILITIES.**

1. City shall undertake the contracting and assume responsibility for the Project's management and completion.
2. City shall ensure that all work necessary for the Utilities Relocation in accordance with the final Plans shall be included in the contract and let to bid by City.
3. All construction, engineering and contract supervision shall be the responsibility of City. City shall keep accurate records with regard to the activities conducted under this IGA and provide Fulton County access to such records upon request. City shall consult with Fulton County for its approval as provided herein before authorizing any changes or deviations which affect Fulton County's facilities.
4. City shall respond in a timely manner to any issue that may arise during the construction phase. All efforts shall be made not to delay the contractor under any circumstances.
5. City shall be responsible to assure that all Utilities Relocation work is accomplished in accordance with the Plans.

**VI. ADDITIONAL UNDERSTANDINGS.**

The Parties to this IGA have mutually acknowledged and agreed to the following:

1. The Parties shall work together in a cooperative and coordinated effort, and in such a manner and fashion to bring about the achievement and fulfillment of the goals and objectives of this IGA.
2. It is not the intent of this IGA to restrict the Parties to this IGA from their involvement or participation with any other public or private individuals, agencies or organizations.

**VII. TERM.**

This IGA shall be effective upon execution by both Parties and continue until completion of the Utilities Relocation and the Project and full reimbursement by Fulton County to City for the cost of the work. In no event shall this IGA exceed a fifty (50) year term. The Parties may agree to amend this IGA at any time.

**VIII. RESPONSIBILITY FOR CLAIMS AND LIABILITY.**

It is hereby stipulated and agreed between the Parties that, with respect to any claim or action brought by a third party and arising out of the activities described in this IGA or stemming from any matter arising out of any actual or alleged infringement of any patent, trademark, copyright, or service mark, or other actual or alleged unfair competition

disparagement of product or service, or other tort or any type whatsoever, or any actual or alleged violation of trade regulations, each Party shall only be liable for payment of that portion of any and all liability, costs, expenses, demands, settlements, or judgments resulting from the negligence actions or omissions of its own agents, officers, and employees. Either Party may self-fund its obligations under this IGA. However, nothing herein shall be construed as a waiver of any Party's sovereign immunity or the immunities available to the officials, officers and employees of the Parties. Under the construction contract between City and the contractor performing the Utilities Relocation, such contractor shall agree to indemnify and hold harmless Fulton County as an additional indemnified party under the construction contract with respect to the Utilities Relocation work.

**IX. INSURANCE.**

Under the construction contract between City and the contractor performing the Utilities Relocation, such contractor shall agree to include Fulton County, as the owner of the utility facilities affected by the Utilities Relocation work, as an additional insured on bodily injury and property damage liability insurance required to be purchased and maintained by the contractor in accordance with the terms of the construction contract. Such insurance shall be in an amount of not less than \$1,000,000.00 per occurrence. Certificates of insurance stating coverages and policy limits and showing City, Fulton County, and other insured parties as additional insured shall be provided in accordance with the terms of the construction contract.

**X. REVIEW OF WORK.**

Authorized representatives of Fulton County may at all reasonable times review and inspect the Utilities Relocation work under the terms of this IGA and any amendments thereto. If requested by Fulton County under the terms hereof, its review recommendations shall be reviewed and considered by City's Project Manager / Engineer-in-Charge. Should City's Project Manager / Engineer-in-Charge determine incorporation of such recommendations into the work activities of City is not appropriate, the Project Manager / Engineer-in-Charge shall promptly notify Fulton County and, should Fulton County so request, the Parties will meet within seven (7) days to discuss and review Fulton County's recommendations. Should the Parties be unable to agree after meeting, Fulton County's recommendations shall be incorporated into the work activities if they relate solely to Fulton County's facilities. Otherwise, the determination of the Project Manager / Engineer-in-Charge shall control.

**XI. TIME OF PERFORMANCE.**

Time is of the essence in all matters pertaining to this IGA. In the event Fulton County requests any changes in the work related to the Utilities Relocation after the Project work is underway, Fulton County shall cooperate in a prompt and timely manner to any requests by City in the processing of any change orders to avoid delays on the progress of the

Utilities Relocation. Fulton County will be responsible for any unforeseen site condition related to the Utilities Relocation work that creates a Project delay.

## **XII. MISCELLANEOUS.**

1. **Entire Agreement; Counterparts.** This IGA may be executed by the Parties in counterparts, each of which shall constitute an original. This IGA, including the attached exhibits, sets forth the entire understanding between the Parties and supersedes all previous agreements and understandings between them, oral or written, and may be amended only in a document executed by both Parties. No amendment, modification, termination, or waiver of any provision of this IGA, nor consent to any departure by the Parties, shall in any event be effective unless the same shall be in writing and signed by Fulton County and City, and then such waiver or consent shall be effective only in the specific instance and for the specific purpose for which given.
2. **Governing Law.** This IGA and the Parties' rights and obligations hereunder, shall be governed by, and construed and enforced in accordance with, the laws of the State of Georgia, without regard to its conflict of laws rules.
3. **Sovereign Immunity.** Nothing herein shall be construed as a waiver of either Party's sovereign immunity as a governmental body or waiver of any governmental immunities available to its officers, officials, employees, or agents.
4. **Representations and Warranties of the Parties.** In furtherance of the public purposes of this IGA, Fulton County and City hereby represent and warrant to each other (which representations and warranties shall be deemed independently material notwithstanding any prior inquiries) the following:
  - A. **Authority.** Each Party hereto expressly represents and warrants that (i) it has the power to make, deliver and perform this IGA, and has taken all necessary action to authorize the execution, delivery and performance of this IGA; (ii) this IGA when executed will constitute the valid obligations with respect to each Party, legally binding upon the same and enforceable in accordance with the terms hereof; and (iii) no further consent or approval of any other Party not specifically mentioned herein is required in connection with the execution, delivery, performance, validity and enforcement of this IGA. Without limiting the generality of the foregoing, each Party hereby expressly acknowledges and represents that it has officially adopted and otherwise approved this IGA at a meeting of its governing authority in accordance with the Constitution and laws of the State of Georgia, to include, without limitation, the Georgia Open Meetings Act, O.C.G.A. 50-14-1 *et seq.*

**B. Public Purpose.** This IGA and the services contemplated herein are for the public welfare and benefit and are undertaken in accordance with the laws and Constitution of the State of Georgia. Without limiting the foregoing, the Parties specifically and expressly warrant and represent, and do hereby find, that this IGA (i) pertains to the provision of services and activities which the Parties are by law authorized to undertake and provide; (ii) is otherwise authorized under the Intergovernmental Contracts Clause of the Georgia Constitution of 1983, Art. IX, Sec. III, Par. 1(a); and (iii) does not authorize the creation of new debt as contemplated by Ga. Const. of 1983, Art. IX, Sec. V. Par. I(a).

5. **Assignment; Binding Effect.** The rights and obligations of the Parties under this IGA are personal and may not be assigned by one Party without the prior written consent of the other Party. Subject to the foregoing, this IGA shall be binding upon and enforceable against, and shall inure to the benefit of, the Parties hereto and their respective successors and permitted assigns.
6. **No Third-Party Beneficiaries.** This IGA is made between and limited to Fulton County and City, and is not intended, and shall in no event be construed to be, for the benefit of any person or entity other than Fulton County and City, and no other person or entity shall be considered a third-party beneficiary by virtue of this IGA or otherwise entitled to enforce the terms of this IGA for any reason whatsoever.
7. **Exhibits.** Each and every exhibit referred to or otherwise mentioned in this IGA is attached to this IGA and is and shall be construed to be made a part of this IGA by such reference or other mention at each point at which such reference or other mention occurs, in the same manner and with the same effect as if each exhibit were set forth in full and at length every time it is referred to or otherwise mentioned.
8. **Relationship of Parties.** Notwithstanding anything in this IGA to the contrary, neither Party shall have the power to bind nor obligate the other Party except as expressly set forth in this IGA.
9. **Notices.** Any notice or communication required or permitted under this IGA shall be in writing and shall be deemed received when: i) delivered in person, or ii) upon actual delivery when sent by national overnight express commercial carrier, or iii) on the third day after the postmark date when mailed by certified mail, return receipt requested, to the Party at the address given below.

**TO FULTON COUNTY:**

David E. Clark  
Director, Department of Public Works  
141 Pryor Street, S.W., Suite 6001  
Atlanta, Georgia 30303

**Copy to:**

County Attorney  
Office of the County Attorney  
141 Pryor Street, S.W., Suite 4038  
Atlanta, Georgia 30303

**TO CITY:**

Sara Leaders  
City of Milton Public Works  
2006 Heritage Walk  
Milton, Georgia 30004

**Copy to:**

Jarrard & Davis, LLP  
222 Webb Street  
Cumming, Georgia 30040  
Attention: Ken Jarrard, Esq.

10. **Severability.** If any provision of this IGA shall be held invalid or unenforceable by any court of competent jurisdiction, such holding shall not invalidate or render unenforceable any other provision hereof.
11. **Force Majeure.** Neither Party shall be deemed to be in violation of this IGA if either is prevented from performing its obligations hereunder for any reason beyond its control, including but not limited to acts of God, civil or military authority, act of public enemy, accidents, fires, explosions, earthquakes, floods or catastrophic failures of public transportation.

[SIGNATURES FOLLOW ON NEXT PAGE]

**IN WITNESS WHEREOF**, the Parties, by and through their duly authorized representatives, have executed this IGA to be effective as of the date first set forth above.

**CITY OF MILTON, GEORGIA**

By: \_\_\_\_\_  
Peyton Jamison, Mayor

Attest: \_\_\_\_\_  
City Clerk

(SEAL)

**FULTON COUNTY, GEORGIA**

By: \_\_\_\_\_  
Robert L. Pitts, Chairman  
Board of Commissioners

Attest:

By: \_\_\_\_\_  
Tonya R. Grier  
Clerk to the Commission

(COUNTY SEAL)

Approved as to Form:

By: \_\_\_\_\_  
Y. Soo Jo, County Attorney

EXHIBIT "A"

STANDARD ROADSIDE SIGNS																									
HIGHWAY SIGNS													GALVANIZED STEEL POSTS												
STATION	OFFSET	SIDE	INSTL. NO.	SIGN CODE	HIGHWAY SIGNS, TP 1 MATL. REFL SHEETING, TP 9				HIGHWAY SIGNS, TP 2 MATL. REFL SHEETING, TP 9				HIGHWAY SIGNS, TP 1 MATL. REFL SHEETING, TP 11				QUANTITY	TYPE 7							
					W	X	H	QTY	FT <sup>2</sup>	W	X	H	QTY	FT <sup>2</sup>	W	X		H	QTY	FT <sup>2</sup>	EA	LENGTH (FEET)	TOTAL LENGTH (FEET)		
<b>Cox Road</b>																									
101+50.00	15.00	RT	1	W2-6													30	X	30	1	7.00	1	15.0	15.0	
				W13-1P													18	X	18	1	3.00				
102+28.90	22.42	LT	2	R2-1													24	X	30	1	5.00	1	13.5	13.5	
				R5-2													24	X	24	1	4.00	1			
102+45.12	18.10	RT	3	W2-6													30	X	30	1	7.00	1	15.0	15.0	
				W13-1P													18	X	18	1	3.00				
102+66.39	0.00	CL	4	R4-7	24	X	30	1	5.00													1	12.5	12.5	
103+43.10	5.50	RT	5	R1-2													36	X	*	1	3.90	1	12.5	12.5	
103+44.31	5.34	LT	6	D1-10						36	X	8	1	2.01								2	12.0	24.0	
103+78.00	8.00	RT	7	R6-1	36	X	12	1	3.00								36	X	*	1	3.90	1	11.0	11.0	
103+47.32	38.98	RT	8	R1-2													36	X	*	1	3.90	1	12.5	12.5	
200+28.77	12.40	LT	9	R6-1	36	X	12	1	3.00								36	X	*	1	3.90	1	11.0	11.0	
200+48.74	35.68	LT	10	R1-2													36	X	*	1	3.90	1	12.5	12.5	
200+55.30	9.50	RT	11	D1-10						36	X	8	1	2.01								2	12.0	24.0	
200+56.47	0.99	LT	12	R1-2													36	X	*	1	3.90	1	12.5	12.5	
201+08.55	0.00	CL	13	R4-7	24	X	30	1	5.00												1	12.5	12.5		
201+32.41	22.80	RT	14	R2-1						24	X	30	1	5.00	1	12.5	12.5								
201+53.53	20.91	LT	15	W2-6						30	X	30	1	7.00	1	15.0	15.0								
				W13-1P						18	X	18	1	3.00											
202+50.00	17.63	LT	16	W2-6						30	X	30	1	7.00	1	15.0	15.0								
				W13-1P						18	X	18	1	3.00											
<b>King Road</b>																									
301+00.00	14.60	RT	17	W2-6													30	X	30	1	7.00	1	15.0	15.0	
				W13-1P						18	X	18	1	3.00											
302+49.30	20.30	RT	17	W2-6						30	X	30	1	7.00	1	15.0	15.0								
				W13-1P						18	X	18	1	3.00											
302+91.78	0.00	CL	19	R4-7	24	X	30	1	5.00												1	12.5	12.5		
303+42.33	4.28	RT	20	R1-2													36	X	*	1	3.90	1	12.5	12.5	
303+43.69	4.61	LT	21	D1-10						32	X	8	1	1.75								2	12.0	24.0	
303+52.22	35.84	RT	22	R1-2						36	X	*	1	3.90	1	12.5	12.5								
303+60.20	10.67	RT	23	R6-1	36	X	12	1	3.00												1	11.0	11.0		
					<b>TOTAL</b>	<b>6</b>	<b>24</b>				<b>3</b>	<b>6</b>									<b>21</b>	<b>97</b>	<b>27</b>	<b>334</b>	

PAVEMENT MARKING QUANTITIES					
DESCRIPTION	TRAFFIC STRIPE			HATCHING	WORD TP 15
	6 INCH TRAFFIC STRIPING		WHITE SKIP 18"		
	WHITE SOLID	YELLOW SOLID	GLF	YELLOW	
ROAD NAME	LF	LF	GLF	SY	EA
COX ROAD	1010	272	60	307	2
KING ROAD	452	125	27	76	1
<b>TOTALS</b>	<b>1400</b>	<b>485</b>	<b>87</b>	<b>288</b>	<b>3</b>

RIGHT OF WAY MARKERS
EA
10.00

REMOVE AND RESET SIGNS		
STATION REMOVAL	STATION RESET	QUANTITY
<b>COX ROAD</b>		
102+28.90	22.42 LT	1
103+33.88	24.12 LT	1
200+56.47	19.97 RT	1
<b>TOTAL:</b>		<b>3</b>

**WATER MAIN INSTALLATION QUANTITIES**

PAY ITEM #	ITEM	SIZE	QUANTITY	UNIT
171	0030	TEMPORARY SILT FENCE, TYPE C	500	LF
441	0104	CONC SIDEWALK 4 IN	10	SY
500	3001	CLASS AA CONCRETE, HES (500-3001)	5	CY
611	8120	ADJUST WATER METER BOX TO GRADE	4	EA
611	8140	ADJUST WATER VALVE BOX TO GRADE	2	EA
600	0001	FLOWABLE FILL	8	CY
670	1060	WATER MAIN, 6 IN, DIP	6"	10 LF
670	1120	WATER MAIN, 12 IN, DIP	12"	423 LF
670	1600	CUT & PLUG OR REMOVE EXISTING WATERMAIN	2	EA
670	1900	INLINE PLUG	1	EA
670	2500	INSERT VALVE (12" DIA)	If Reqd.	1 EA
670	2120	GATE VALVE, 12 IN	12"	2 EA
670	2002	VALVE MARKER	1	EA
670	3169	TAPPING SLEEVE & VALVE ASSEMBLY (or Straight)	16 IN x 12 IN	1 EA
670	3108	TAPPING SLEEVE & VALVE ASSEMBLY (or Straight)	10 IN x 10 IN	1 EA
670	4000	FIRE HYDRANT	W/6" GV	1 EA
670	5620	WATER SERVICE LINE, 3/4 IN	3/4-inch	50 LF
670	5010	WATER SERVICE LINE, 1 IN	1-inch	50 LF
670	5020	WATER SERVICE LINE, 2 IN	2-inch	50 LF
670	9710	RELOCATE EXISTING FIRE HYDRANT	If Reqd.	1 EA
670	9720	RELOCATE EXISTING WATER VALVE, INC BOX	If Reqd.	1 EA
670	9730	RELOCATE EXISTING WATER METER, INC BOX	1	EA
670	9920	REMOVE EXISTING FIRE HYDRANT	If Reqd.	1 EA



**REVISION DATES**

NO.	DATE	DESCRIPTION

**SUMMARY QUANTITIES**  
COX ROAD ROUNDABOUT  
AT KING ROAD

CHECKED:	DATE:	DRAWING No. <b>06-002</b>
BACKCHECKED:	DATE:	
CORRECTED:	DATE:	
VERIFIED:	DATE:	

**UTILITY LINECODES**

	EXISTING	TO BE REMOVED	PROPOSED	TYPE OF UTILITY
OVERHEAD	--W--E--W--E	-X--W--E--W--X--E	W--E--W--E	ELECTRIC
	--W--E-T--W--	-X--W--E-T--W--X--	W--E-T--W--	ELECTRIC/TELECOMMUNICATIONS
	--W--E-TV--W--	-X--W--E-TV--W--X--	W--E-TV--W--	ELECTRIC/CABLE TV
	--W--E-T-TV--W--	-X--W--E-T-TV--W--X--	W--E-T-TV--W--	ELECTRIC/TELECOMMUNICATIONS/CABLE TV
	--W--GW--W--	-X--W--GW--W--X--	W--GW--W--	GUY WIRE
	--W--T--W--T--	-X--W--T--W--T--X--	W--T--W--T--	TELECOMMUNICATIONS
	--W--T-TV--W--	-X--W--T-TV--W--X--	W--T-TV--W--	TELECOMMUNICATIONS/CABLE TV
	--W--TV--W--	-X--W--TV--W--X--	W--TV--W--	CABLE TV

	EXISTING	TO BE REMOVED	PROPOSED	TYPE OF UTILITY
UNDERGROUND	-----E-----	-X-----E-----X-	E-----	ELECTRIC
	-----T-----	-X-----T-----X-	T-----	TELECOMMUNICATIONS
	-----TV-----	-X-----TV-----X-	TV-----	CABLE TV
	-----W-----	-X-----W-----X-	W-----	WATER
	-----**W-----	-X-----**W-----X-	=====**W=====	WATER FOR LABELED PIPE SIZES
	-----NW-----	-X-----NW-----X-	NW-----	NON-POTABLE WATER
	-----**NW-----	-X-----**NW-----X-	=====**NW=====	NON-POTABLE WATER FOR LABELED PIPE SIZES
	-----STM-----	-X-----STM-----X-	-----STM-----	STEAM
	-----**STM-----	-X-----**STM-----X-	=====**STM=====	STEAM FOR LABELED PIPE SIZES
	----->SS-----	-X----->SS-----X-	----->SS-----	SANITARY SEWER WITH FLOW DIRECTION
	----->SS-----	-X----->SS-----X-	=====>SS=====	SANITARY SEWER WITH FLOW DIRECTION FOR LABELED PIPE SIZES
	----->SFM-----	-X----->SFM-----X-	----->SFM-----	SANITARY SEWER FORCE MAIN WITH FLOW DIRECTION
	-----G-----	-X-----G-----X-	G-----	GAS
	-----**G-----	-X-----**G-----X-	=====**G=====	GAS FOR LABELED PIPE SIZES
	-----P-----	-X-----P-----X-	P-----	PETROLEUM
-----**P-----	-X-----**P-----X-	=====**P=====	PETROLEUM FOR LABELED PIPE SIZES	

**UTILITY SYMBOLS**

EXISTING	PROPOSED	TEMPORARY	EXISTING	PROPOSED	TEMPORARY

**APPLICABLE WATER & SEWER STANDARD DETAILS**

FULTON COUNTY DETAIL NO.	DESCRIPTION
101	UTILITY LOCATION UNDERGROUND UTILITY WITH REUSE, TYPICAL SECTION
102	CONDUIT LOCATION FOR UNDERGROUND UTILITIES COMBINATION SEWER EASE
103	ALLOWABLE TRENCH WIDTHS WATER MAINS
105	STRUCTURE ADJUSTMENT
108	TRENCH TERMINOLOGY
109	PAVEMENT CUT REPAIRS TYPE A, B, & C
111	BRICK MANHOLE DETAIL AND MANHOLE FRAME COVER
111A	LANDSCAPE AND PAVEMENT MANHOLE FRAME AND COVERS
115	STANDARD SEWER MANHOLES PRECAST CONCRETE
117	PIPE SEWER DATA PVC PIPE INSTALLATION
303	TYPICAL SECTION (CUL-DE-SAC)
319	CENTER ISLAND
401	SANITARY SEWER TYPICAL RIP-RAP CHANNEL PIPE CROSSING
605	LARGE METERS AND VAULT
701	GREASE/SOLIDS/OIL INTERCEPTOR 4 TANKS IN SERIES
707	SERVICE CONNECTION ON NEW SEWERS
709	SERVICE CONNECTION CLEANOUT
711	SEWER LATERAL INSTALLATION DETAILS FOR CURB STREETS
712	CROSSING ABOVE EXISTING SANITARY SEWER PIPE
713	DOGHOUSE MANHOLE DETAIL
801	3/4" & 5/8" METER INSTALLATION
802	1" METER INSTALLATION
805	LARGE METERS AND VAULT
806	3/4" - 1" METER SETTING SHORT AND LONG SIDES
810	DOUBLE CHECK VALVE ASSEMBLY
813	WATER METER INSTALLATION & 3/4" COPPER SERVICE WATER VALVE MARKERS
814	HYDRANT LOCATION DETAIL FOR CURB AND GUTTER STREETS
815	FIRE HYDRANT STREET UNCURBED
820	WATER MAIN TERMINATION
826	WATER SAMPLING STATION
827	WATER METER MANIFOLD DETAIL FOR TOWNHOUSE DEVELOPMENTS
828	SAN. SEWER CLEANOUT COVER FOR USE IN RES. DRIVEWAYS AND SIDEWALKS
829	AUTO BLOW OFF FLUSH STATION
830	WATER METER LAYOUT FOR TOWNHOUSE DEVELOPMENTS W/O LOTS
831	4-INCH FIRE METER LAYOUT

SEE FULTON COUNTY GA STANDARDS AND DETAILS AT:  
<https://www.fultoncountygga.gov/services/water-services/view-construction-standard-details>

- RELOCATION OF UTILITIES SHALL BE COORDINATED BY CONTRACTOR.
- LOCATIONS OF UTILITIES SHOWN ON THESE PLANS ARE BASED ON EARLY COORDINATION BY THE CITY. ACTUAL FIELD LOCATIONS TO BE DETERMINED BY CONTRACTOR AND UTILITY COMPANY.
- THE RELOCATION OF UTILITIES SHOWN ON THE FOLLOWING UTILITY PLANS ARE A RESULT OF THE DESIGNER'S COORDINATION OF UTILITIES; THESE UTILITY RELOCATIONS HAVE NOT BEEN DESIGNED BY THE PROJECT'S ENGINEER OF RECORD
- CONTRACTOR SHALL BE RESPONSIBLE FOR ALL WATER AND SEWER RELOCATIONS AND ADJUSTMENTS SHOWN IN THE PLANS.



**Contact 811 before you dig.**

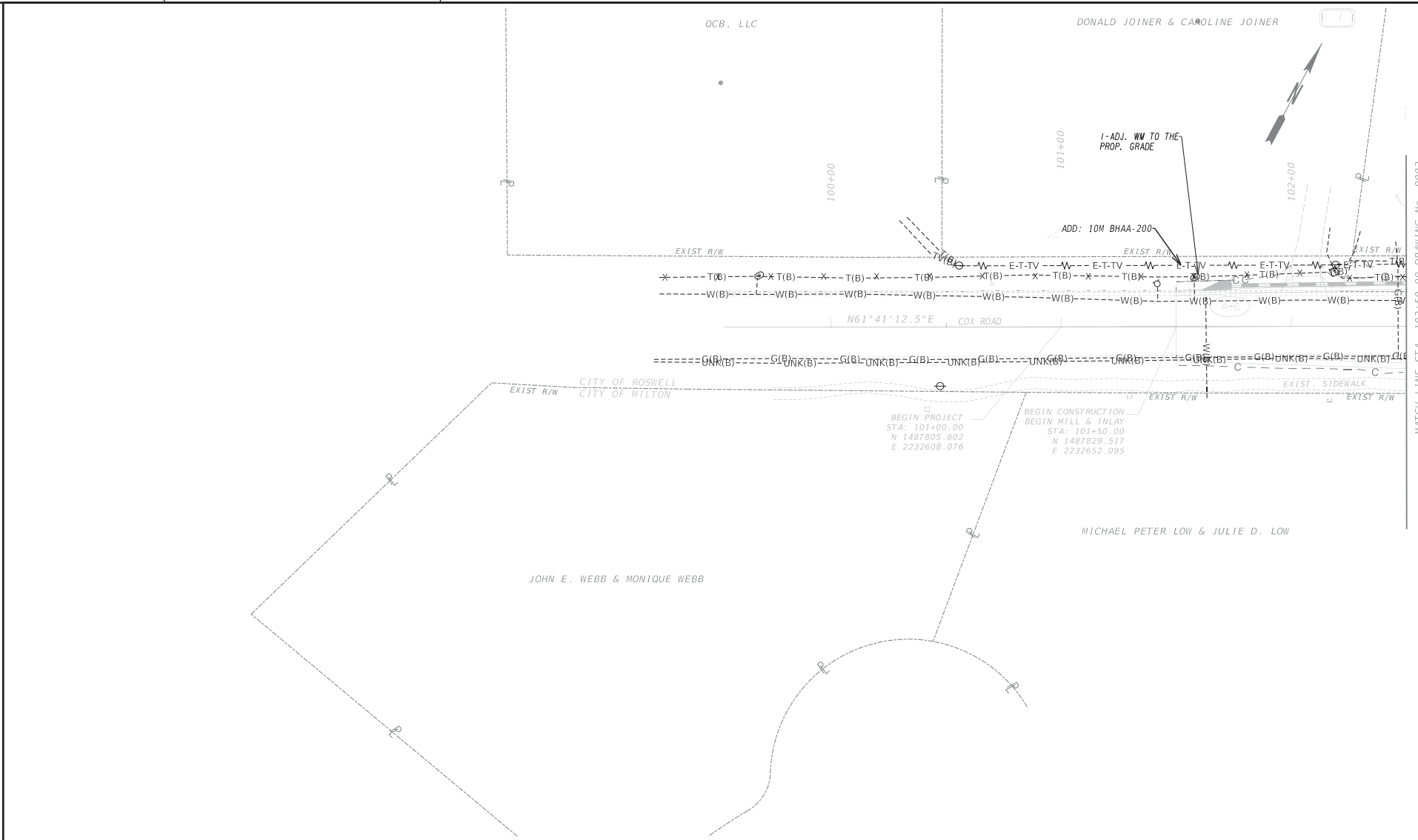


**REVISION DATES**

NO.	DATE	DESCRIPTION

UTILITY PLANS  
 COX ROAD ROUNDABOUT  
 AT KING ROAD

CHECKED:	DATE:	DRAWING No.
		24-0000
BACKCHECKED:	DATE:	
CORRECTED:	DATE:	
VERIFIED:	DATE:	



MATCH LINE STA. 102+50.00 DRAWING NO. 0002

PROPERTY AND EXISTING R/W LINE	-----E-----	BEGIN LIMIT OF ACCESS.....BLA	--- --- ---
REQUIRED R/W LINE	-----F-----	END LIMIT OF ACCESS.....ELA	--- --- ---
CONSTRUCTION LIMITS	-----C-----	EXISTING LIMIT OF ACCESS	--- --- ---
EASEMENT FOR CONSTR & MAINTENANCE OF SLOPES	-----F-----	REQ'D LIMIT OF ACCESS	--- --- ---
EASEMENT FOR CONSTR OF SLOPES	-----F-----	EXISTING LIMIT OF ACCESS & R/W	--- --- ---
EASEMENT FOR CONSTR OF DRIVES	-----F-----	REQ'D LIMIT OF ACCESS & R/W	--- --- ---
	-----F-----	ORANGE BARRIER FENCE	--- --- ---
	-----F-----	ESA - ENV. SENSITIVE AREA	--- --- ---

**MILTON**   
EST 2006

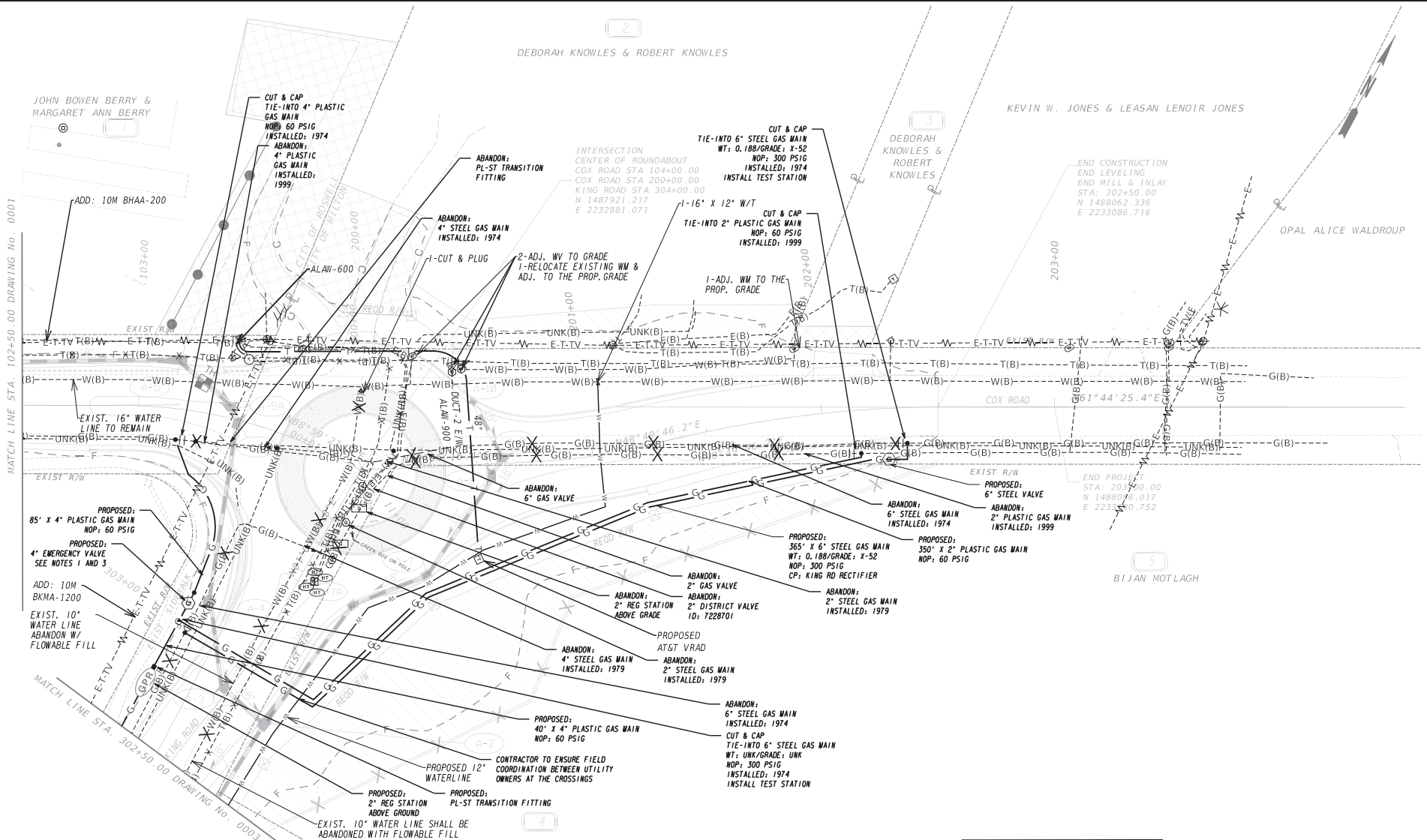
**POND**  
Architects • Engineers • Planners

SCALE IN FEET  
0 20 40 80

REVISION DATES	

UTILITY PLANS  
COX ROAD ROUNDABOUT  
AT KING ROAD

CHECKED:	DATE:	DRAWING No. <b>24-0001</b>
BACKCHECKED:	DATE:	
CORRECTED:	DATE:	
VERIFIED:	DATE:	



PROPERTY AND EXISTING R/W LINE	---	BEGIN LIMIT OF ACCESS.....BLA	---
REQUIRED R/W LINE	---	END LIMIT OF ACCESS.....ELA	---
CONSTRUCTION LIMITS	---	EXISTING LIMIT OF ACCESS	---
EASEMENT FOR CONSTR & MAINTENANCE OF SLOPES	---	REQ'D LIMIT OF ACCESS	---
EASEMENT FOR CONSTR OF SLOPES	---	EXISTING LIMIT OF ACCESS & R/W	---
EASEMENT FOR CONSTR OF DRIVES	---	REQ'D LIMIT OF ACCESS & R/W	---
	---	ORANGE BARRIER FENCE	---
	---	ESA - ENW - SENSITIVE AREA	---

---	CONTRACTOR TO ENSURE FIELD COORDINATION BETWEEN UTILITY OWNERS AT THE CROSSINGS
---	PROPOSED: 12" WATERLINE
---	PROPOSED: 2" REG STATION ABOVE GROUND
---	PROPOSED: PL-ST TRANSITION FITTING
---	EXIST. 10" WATER LINE SHALL BE ABANDONED WITH FLOWABLE FILL

**MILTON** EST 2006

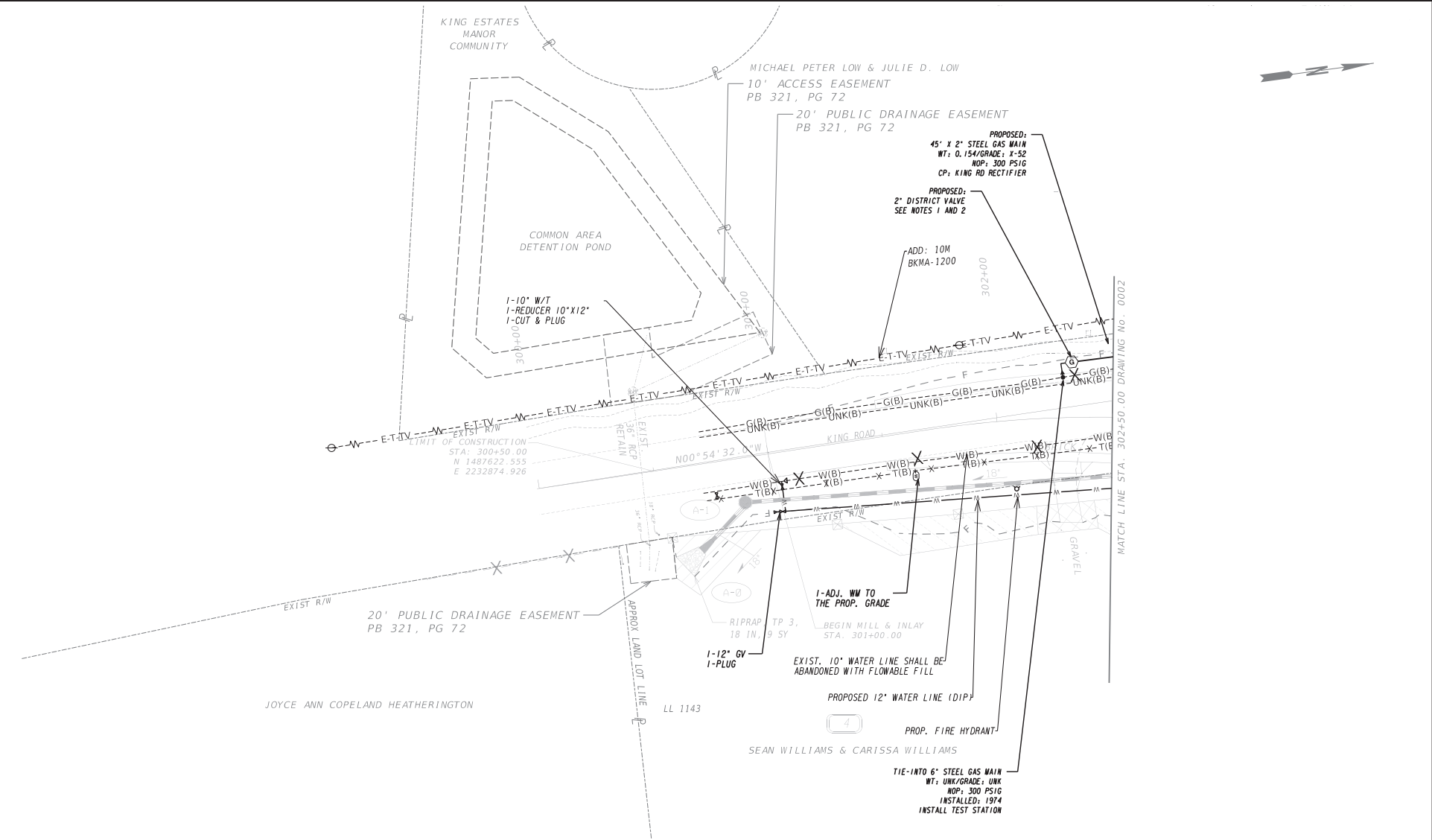
**POND**  
Architects • Engineers • Planners

SCALE IN FEET

REVISION DATES	

UTILITY PLANS  
COX ROAD ROUNDABOUT  
AT KING ROAD

CHECKED:	DATE:	DRAWING No. <b>24-0002</b>
BACKCHECKED:	DATE:	
CORRECTED:	DATE:	
VERIFIED:	DATE:	



PROPERTY AND EXISTING R/W LINE	-----E-----
REQUIRED R/W LINE	-----F-----
CONSTRUCTION LIMITS	-----G-----
EASEMENT FOR CONSTR & MAINTENANCE OF SLOPES	-----H-----
EASEMENT FOR CONSTR OF SLOPES	-----I-----
EASEMENT FOR CONSTR OF DRIVES	-----J-----

BEGIN LIMIT OF ACCESS.....BLA	-----K-----
END LIMIT OF ACCESS.....ELA	-----L-----
EXISTING LIMIT OF ACCESS	-----M-----
REQ'D LIMIT OF ACCESS	-----N-----
EXISTING LIMIT OF ACCESS & R/W	-----O-----
REQ'D LIMIT OF ACCESS & R/W	-----P-----
ORANGE BARRIER FENCE	-----Q-----
ESA - ENV. SENSITIVE AREA	-----R-----

**MILTON**   
EST 2006

**POND**  
Architects • Engineers • Planners

SCALE IN FEET  
0 20 40 80

REVISION DATES	

UTILITY PLANS COX ROAD ROUNDABOUT AT KING ROAD		DRAWING No.
CHECKED:	DATE:	24-0003
BACKCHECKED:	DATE:	
CORRECTED:	DATE:	
VERIFIED:	DATE:	

EXHIBIT "B"

# Cox Road Roundabout At Kings Road - City of Milton

## WATER MAIN INSTALLATION QUANTITIES & COST ESTIMATE

PAY ITEM #		ITEM	SIZE	QUANTITY	UNIT	Unit Cost	AMOUNT	
171	-	0030	TEMPORARY SILT FENCE, TYPE C		500	LF	\$6.00	\$3,000.00
441	-	0104	CONC SIDEWALK 4 IN	4" thick if req.	10	SY	\$50.00	\$500.00
500	-	3001	CLASS AA CONCRETE, HES (500-3001)		5	CY	\$175.00	\$875.00
611	-	8120	ADJUST WATER METER BOX TO GRADE		4	EA	\$800.00	\$3,200.00
611	-	8140	ADJUST WATER VALVE BOX TO GRADE		2	EA	\$800.00	\$1,600.00
600	-	0001	FLOWABLE FILL		8	CY	\$300.00	\$2,400.00
670	-	1060	WATER MAIN, 6 IN, DIP	6"	10	LF	\$80.00	\$800.00
670	-	1120	WATER MAIN, 12 IN, DIP	12"	423	LF	\$160.00	\$67,680.00
670	-	1600	CUT & PLUG OR REMOVE EXISTING WATERMAIN		2	EA	\$8,000.00	\$16,000.00
670	-	1900	INLINE PLUG		1	EA	\$2,000.00	\$2,000.00
670	-	2500	INSERT VALVE (12" DIA)	If Req'd.	1	EA	\$25,000.00	\$25,000.00
670	-	2120	GATE VALVE, 12 IN	12"	2	EA	\$12,000.00	\$24,000.00
670	-	2002	VALVE MARKER		1	EA	\$50.00	\$50.00
670	-	3169	TAPPING SLEEVE & VALVE ASSEMBLY (or Straight)	16 IN x 12 IN	1	EA	\$16,000.00	\$16,000.00
670	-	3108	TAPPING SLEEVE & VALVE ASSEMBLY (or Straight)	10 IN x 10 IN	1	EA	\$10,000.00	\$10,000.00
670	-	4000	FIRE HYDRANT	W/6" GV	1	EA	\$7,500.00	\$7,500.00
670	-	5620	WATER SERVICE LINE, 3/4 IN	3/4-inch	50	LF	\$30.00	\$1,500.00
670	-	5010	WATER SERVICE LINE, 1 IN	1-inch	50	LF	\$45.00	\$2,250.00
670	-	5020	WATER SERVICE LINE, 2 IN	2-inch	50	LF	\$55.00	\$2,750.00
670	-	9710	RELOCATE EXISTING FIRE HYDRANT	If Req'd.	1	EA	\$2,500.00	\$2,500.00
670	-	9720	RELOCATE EXISTING WATER VALVE, INC BOX	If Req'd.	1	EA	\$1,200.00	\$1,200.00
670	-	9730	RELOCATE EXISTING WATER METER, INC BOX		1	EA	\$1,200.00	\$1,200.00
670	-	9920	REMOVE EXISTING FIRE HYDRANT	If Req'd.	1	EA	\$1,000.00	\$1,000.00
			Note: All pipe fittings & accessories shall be included with pipe (LF) price.					<b>\$193,005.00</b>
			Task Allowance: (As designated by Fulton County Project Manager) 20%					\$38,601.00
			TOTAL COST					<b>\$231,606.00</b>

### STANDARD ROADSIDE SIGNS

HIGHWAY SIGNS															GALVANIZED STEEL POSTS									
STATION	OFFSET	SIDE	IN STL. NO.	SIGN CODE	HIGHWAY SIGNS, TP 1 MATL. REFL SHEETING, TP 9					HIGHWAY SIGNS, TP 2 MATL. REFL SHEETING, TP 9					HIGHWAY SIGNS, TP 1 MATL. REFL SHEETING, TP 11					QUANTITY	TYPE 7			
					W	X	H	QTY	FT <sup>2</sup>	W	X	H	QTY	FT <sup>2</sup>	W	X	H	QTY	FT <sup>2</sup>		EA	LENGTH (FEET)	TOTAL LENGTH (FEET)	
<b>Cox Road</b>																								
101+50.00	15.00	RT	1	W2-6													30	X	30	1	7.00	1	15.0	15.0
				W13-1P													18	X	18	1	3.00			
102+28.90	22.42	LT	2	R2-1													24	X	30	1	5.00	1	13.5	13.5
				R5-2													24	X	24	1	4.00	1		
102+45.12	18.10	RT	3	W2-6													30	X	30	1	7.00	1	15.0	15.0
				W13-1P													18	X	18	1	3.00			
102+86.39	0.00	CL	4	R4-7	24	X	30	1	5.00								36	X	*	1	3.90	1	12.5	12.5
103+43.10	5.50	RT	5	R1-2													36	X	*	1	3.90	1	12.5	12.5
103+44.31	5.34	LT	6	D1-1D						36	X	8	1	2.01								2	12.0	24.0
103+78.00	8.00	RT	7	R6-1	36	X	12	1	3.00												1	11.0	11.0	
103+47.32	38.98	RT	8	R1-2													36	X	*	1	3.90	1	12.5	12.5
200+28.77	12.40	LT	9	R6-1	36	X	12	1	3.00												1	11.0	11.0	
200+48.74	35.68	LT	10	R1-2													36	X	*	1	3.90	1	12.5	12.5
200+55.70	9.50	RT	11	D1-1D						36	X	8	1	2.01								2	12.0	24.0
200+56.47	0.99	LT	12	R1-2													36	X	*	1	3.90	1	12.5	12.5
201+08.55	0.00	CL	13	R4-7	24	X	30	1	5.00												1	12.5	12.5	
201+32.41	22.60	RT	14	R2-1													24	X	30	1	5.00	1	12.5	12.5
201+53.53	20.91	LT	15	W2-6													30	X	30	1	7.00	1	15.0	15.0
				W13-1P													18	X	18	1	3.00			
202+50.00	17.63	LT	16	W2-6													30	X	30	1	7.00	1	15.0	15.0
				W13-1P													18	X	18	1	3.00			
<b>King Road</b>																								
301+00.00	14.60	RT	17	W2-6													30	X	30	1	7.00	1	15.0	15.0
				W13-1P													18	X	18	1	3.00			
302+49.30	20.30	RT	17	W2-6													30	X	30	1	7.00	1	15.0	15.0
				W13-1P													18	X	18	1	3.00			
302+91.76	0.00	CL	19	R4-7	24	X	30	1	5.00												1	12.5	12.5	
303+42.33	4.28	RT	20	R1-2													36	X	*	1	3.90	1	12.5	12.5
303+43.69	4.61	LT	21	D1-1D						32	X	8	1	1.75								2	12.0	24.0
303+52.22	35.94	RT	22	R1-2													36	X	*	1	3.90	1	12.5	12.5
303+80.20	10.67	RT	23	R6-1	36	X	12	1	3.00												1	11.0	11.0	
<b>TOTAL</b>					<b>6</b>	<b>24</b>				<b>3</b>	<b>6</b>									<b>21</b>	<b>97</b>	<b>27</b>	<b>334</b>	

### REMOVE AND RESET SIGNS

STATION REMOVAL	STATION RESET	QUANTITY
<b>COX ROAD</b>		
102+28.90	22.42' LT	1
103+33.88	24.12' LT	1
200+56.47	19.97' RT	1
<b>TOTAL:</b>		<b>3</b>

### WATER MAIN INSTALLATION QUANTITIES

PAY ITEM #	ITEM	SIZE	QUANTITY	UNIT
171 - 0030	TEMPORARY SILT FENCE, TYPE C		500	LF
441 - 0104	CONC SIDEWALK 4 IN	4" thick if req.	10	SY
500 - 3001	CLASS AA CONCRETE, HES (500-3001)		5	CY
611 - 8120	ADJUST WATER METER BOX TO GRADE		4	EA
611 - 8140	ADJUST WATER VALVE BOX TO GRADE		2	EA
600 - 0001	FLOWABLE FILL		8	CY
670 - 1060	WATER MAIN, 6 IN, DIP	6"	10	LF
670 - 1120	WATER MAIN, 12 IN, DIP	12"	423	LF
670 - 1600	CUT & PLUG OR REMOVE EXISTING WATERMAIN		2	EA
670 - 1900	INLINE PLUG		1	EA
670 - 2500	INSERT VALVE (12" DIA)	If Reqd.	1	EA
670 - 2120	GATE VALVE, 12 IN	12"	2	EA
670 - 2002	VALVE MARKER		1	EA
670 - 3169	TAPPING SLEEVE & VALVE ASSEMBLY (or Straight)	16 IN x 12 IN	1	EA
670 - 3108	TAPPING SLEEVE & VALVE ASSEMBLY (or Straight)	10 IN x 10 IN	1	EA
670 - 4000	FIRE HYDRANT	W/6" GV	1	EA
670 - 5620	WATER SERVICE LINE, 3/4 IN	3/4-inch	50	LF
670 - 5010	WATER SERVICE LINE, 1 IN	1-inch	50	LF
670 - 5020	WATER SERVICE LINE, 2 IN	2-inch	50	LF
670 - 9710	RELOCATE EXISTING FIRE HYDRANT	If Reqd.	1	EA
670 - 9720	RELOCATE EXISTING WATER VALVE, INC BOX	If Reqd.	1	EA
670 - 9730	RELOCATE EXISTING WATER METER, INC BOX		1	EA
670 - 9920	REMOVE EXISTING FIRE HYDRANT	If Reqd.	1	EA

### PAVEMENT MARKING QUANTITIES

DESCRIPTION	TRAFFIC STRIPE			HATCHING	WORD TP 15
	6 INCH TRAFFIC STRIPING		WHITE SKIP 18"		
	WHITE SOLID	YELLOW SOLID		YELLOW	
<b>ROAD NAME</b>	LF	LF	GLF	SY	EA
COX ROAD	1010	272	60	307	2
KING ROAD	452	125	27	76	1
<b>TOTALS</b>	<b>1400</b>	<b>485</b>	<b>87</b>	<b>288</b>	<b>3</b>

### RIGHT OF WAY MARKERS

EA
10.00



### REVISION DATES


### SUMMARY QUANTITIES COX ROAD ROUNDABOUT AT KING ROAD

CHECKED:	DATE:	DRAWING No.
BACKCHECKED:	DATE:	06-0002
CORRECTED:	DATE:	
VERIFIED:	DATE:	

**UTILITY LINECODES**

	EXISTING	TO BE REMOVED	PROPOSED	TYPE OF UTILITY
OVERHEAD	--W--E--W--E	-X-W--E--W-X-E	—E—	ELECTRIC
	--W--E-T--W--	-X-W--E-T--W-X-	—E-T—	ELECTRIC/TELECOMMUNICATIONS
	--W--E-TV--W--	-X-W--E-TV--W-X-	—E-TV—	ELECTRIC/CABLE TV
	--W--E-T-TV--W--	-X-W--E-T-TV--W-X-	—E-T-TV—	ELECTRIC/TELECOMMUNICATIONS/CABLE TV
	--W--GW--W--	-X-W--GW--W-X-	—GW—	GUY WIRE
	--W--T--W--T-	-X-W--T--W--T-X-	—T—	TELECOMMUNICATIONS
	--W--T-TV--W--	-X-W--T-TV--W-X-	—T-TV—	TELECOMMUNICATIONS/CABLE TV
	--W--TV--W--	-X-W--TV--W-X-	—TV—	CABLE TV
UNDERGROUND	-----E-----	-X-----E-----X-	——E——	ELECTRIC
	-----T-----	-X-----T-----X-	——T——	TELECOMMUNICATIONS
	-----TV-----	-X-----TV-----X-	——TV——	CABLE TV
	-----W-----	-X-----W-----X-	——W——	WATER
	======"W"=====	-X======"W"=====-X-	======"W"=====	WATER FOR LABELED PIPE SIZES
	-----NW-----	-X-----NW-----X-	——NW——	NON-POTABLE WATER
	======"NW"=====	-X======"NW"=====-X-	======"NW"=====	NON-POTABLE WATER FOR LABELED PIPE SIZES
	-----STM-----	-X-----STM-----X-	——STM——	STEAM
	======"STM"=====	-X======"STM"=====-X-	======"STM"=====	STEAM FOR LABELED PIPE SIZES
	-----SS----->	-X-----SS-----X-	——SS——>	SANITARY SEWER WITH FLOW DIRECTION
	======"SS"=====	-X======"SS"=====-X-	======"SS"=====	SANITARY SEWER WITH FLOW DIRECTION FOR LABELED PIPE SIZES
	-----SFM----->	-X-----SFM-----X-	——SFM——>	SANITARY SEWER FORCE MAIN WITH FLOW DIRECTION
	-----G-----	-X-----G-----X-	——G——	GAS
	======"G"=====	-X======"G"=====-X-	======"G"=====	GAS FOR LABELED PIPE SIZES
	-----P-----	-X-----P-----X-	——P——	PETROLEUM
======"P"=====	-X======"P"=====-X-	======"P"=====	PETROLEUM FOR LABELED PIPE SIZES	

**UTILITY SYMBOLS**

EXISTING	PROPOSED	TEMPORARY	DESCRIPTION
			UTILITY POLE/GUY POLE
			VENT
			GUY ANCHOR
			LIGHT POLE
			ELECTRIC MANHOLE
			ELECTRIC HAND HOLE
			TRANSFORMER
			ELECTRIC METER
			ELECTRIC LINE MARKER U/G
			ELECTRIC BOX
			ELECTRIC YARD LIGHT POLE
			TRANSMISSION TOWER
			TELECOMMUNICATIONS MANHOLE
			TELECOMMUNICATIONS HANDHOLE
			TELECOMMUNICATIONS PEDESTAL
			TELECOMMUNICATIONS LINE MARKER U/G
			SPLICE BOX
			SUBSCRIBER LOOP CARRIER (aka "SLICK")
			PHONE BOOTH
			TELECOMMUNICATIONS CABINET
			CABLE TV CABINET
			CABLE TV MANHOLE
			CABLE TV HANDHOLE
			CABLE TV PEDESTAL
			CABLE TV LINE MARKER U/G
			SATELLITE DISH
			WATER VALVE
			WATER VALVE MARKER
			WATER METER
			WATER MANHOLE
			FIRE HYDRANT ASSEMBLY (INCLUDES ASSOCIATED VALVE)
			BACKFLOW PREVENTER
			PRESSURE INDICATOR VALVE
			AIR RELEASE VALVE
			WATER VAULT
			STAND PIPE
			WATER LINE MARKER U/G
			CLEANOUT
			SANITARY SEWER MANHOLE
			AIR RELEASE VALVE
			GREASE TRAP
			SANITARY SEWER FORCE MAIN LINE MARKER U/G
			SANITARY SEWER FORCE MAIN VALVE
			SANITARY SEWER FORCE MAIN VALVE MARKER
			GAS YARD LIGHT POLE
			GAS VALVE
			GAS VALVE MARKER
			GAS METER
			GAS MANHOLE
			GAS PRESSURE REGULATOR
			GAS VAULT
			GAS TEST STATION
			GAS LINE MARKER U/G
			PETROLEUM LINE MARKER U/G
			PETROLEUM VALVE
			PETROLEUM VALVE MARKER

**APPLICABLE WATER & SEWER STANDARD DETAILS**

FULTON COUNTY DETAIL NO.	DESCRIPTION
101	UTILITY LOCATION UNDERGROUND UTILITY WITH REUSE, TYPICAL SECTION
102	CONDUIT LOCATION FOR UNDERGROUND UTILITIES COMBINATION SEWER EASE
103	ALLOWABLE TRENCH WIDTHS WATER MAINS
105	STRUCTURE ADJUSTMENT
108	TRENCH TERMINOLOGY
109	PAVEMENT CUT REPAIRS TYPE A, B, & C
111	BRICK MANHOLE DETAIL AND MANHOLE FRAME COVER
111A	LANDSCAPE AND PAVEMENT MANHOLE FRAME AND COVERS
115	STANDARD SEWER MANHOLES PRECAST CONCRETE
117	PIPE SEWER DATA PVC PIPE INSTALLATION
303	TYPICAL SECTION (CUL-DE-SAC)
319	CENTER ISLAND
401	SANITARY SEWER TYPICAL RIP-RAP CHANNEL PIPE CROSSING
605	LARGE METERS AND VAULT
701	GREASE/SOLIDS/OIL INTERCEPTOR 4 TANKS IN SERIES
707	SERVICE CONNECTION ON NEW SEWERS
709	SERVICE CONNECTION CLEANOUT
711	SEWER LATERAL INSTALLATION DETAILS FOR CURB STREETS
712	CROSSING ABOVE EXISTING SANITARY SEWER PIPE
713	DOGHOUSE MANHOLE DETAIL
801	3/4" & 5/8" METER INSTALLATION
802	1" METER INSTALLATION
805	LARGE METERS AND VAULT
806	3/4" - 1" METER SETTING SHORT AND LONG SIDES
810	DOUBLE CHECK VALVE ASSEMBLY
813	WATER METER INSTALLATION & 3/4" COPPER SERVICE WATER VALVE MARKERS
814	HYDRANT LOCATION DETAIL FOR CURB AND GUTTER STREETS
815	FIRE HYDRANT STREET UNCURRED
820	WATER MAIN TERMINATION
826	WATER SAMPLING STATION
827	WATER METER MANIFOLD DETAIL FOR TOWNHOUSE DEVELOPMENTS
828	SAN. SEWER CLEANOUT COVER FOR USE IN RES. DRIVEWAYS AND SIDEWALKS
829	AUTO BLOW OFF FLUSH STATION
830	WATER METER LAYOUT FOR TOWNHOUSE DEVELOPMENTS W/O LOTS
831	4-INCH FIRE METER LAYOUT

SEE FULTON COUNTY GA STANDARDS AND DETAILS AT:  
<https://www.fultoncountyga.gov/services/water-services/view-construction-standard-details>

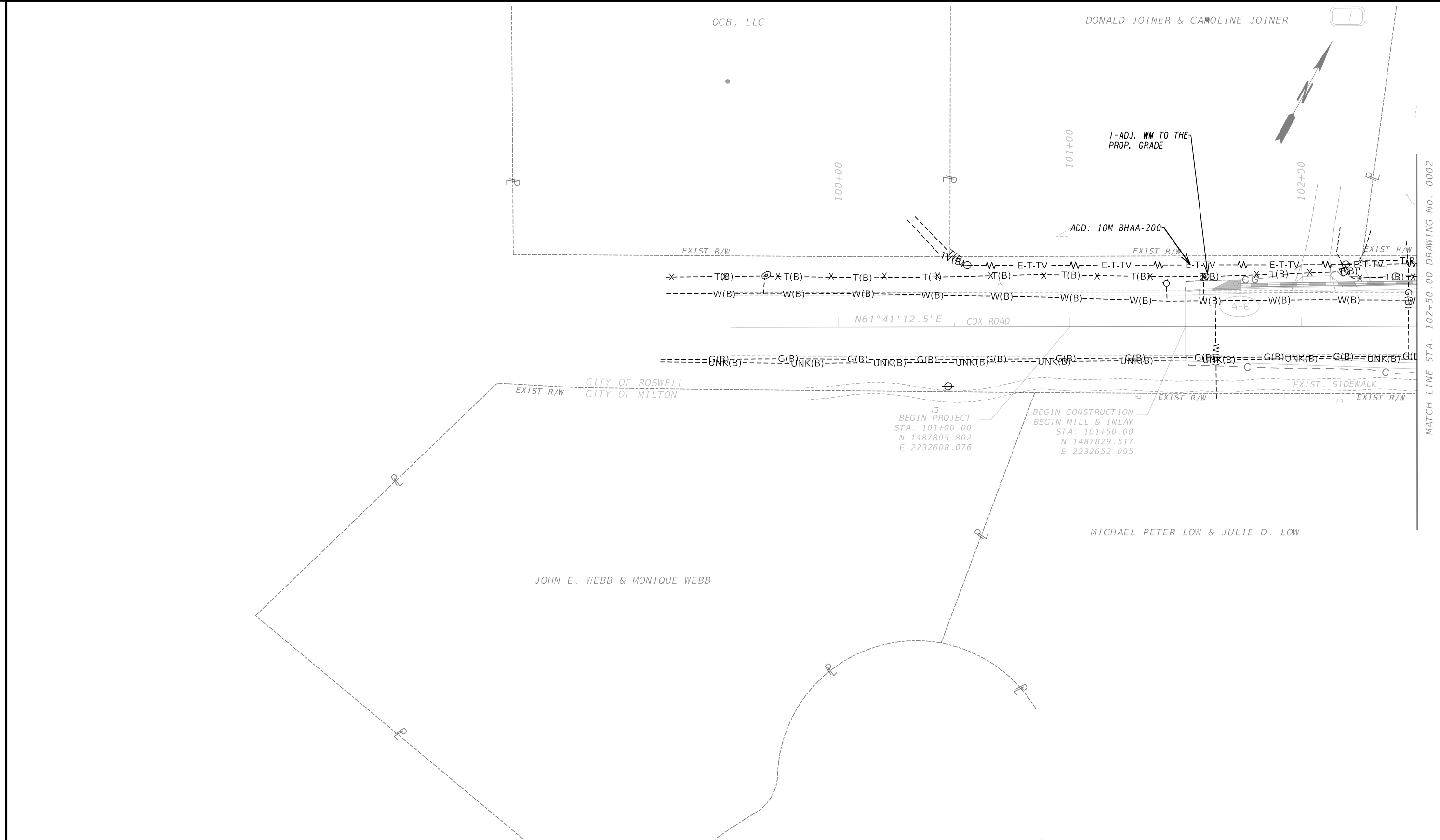
- RELOCATION OF UTILITIES SHALL BE COORDINATED BY CONTRACTOR.
- LOCATIONS OF UTILITIES SHOWN ON THESE PLANS ARE BASED ON EARLY COORDINATION BY THE CITY. ACTUAL FIELD LOCATIONS TO BE DETERMINED BY CONTRACTOR AND UTILITY COMPANY.
- THE RELOCATION OF UTILITIES SHOWN ON THE FOLLOWING UTILITY PLANS ARE A RESULT OF THE DESIGNER'S COORDINATION OF UTILITIES; THESE UTILITY RELOCATIONS HAVE NOT BEEN DESIGNED BY THE PROJECT'S ENGINEER OF RECORD
- CONTRACTOR SHALL BE RESPONSIBLE FOR ALL WATER AND SEWER RELOCATIONS AND ADJUSTMENTS SHOWN IN THE PLANS.



**Contact 811 before you dig.**

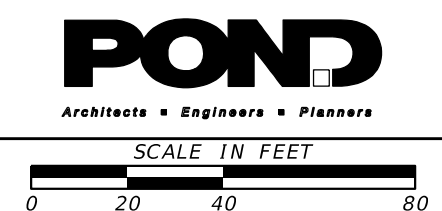
REVISION DATES		UTILITY PLANS	
		COX ROAD ROUNDABOUT	
		AT KING ROAD	
CHECKED:	DATE:	DRAWING No.	
BACKCHECKED:	DATE:	24-0000	
CORRECTED:	DATE:		
VERIFIED:	DATE:		





PROPERTY AND EXISTING R/W LINE	---
REQUIRED R/W LINE	---
CONSTRUCTION LIMITS	---
EASEMENT FOR CONSTR & MAINTENANCE OF SLOPES	---
EASEMENT FOR CONSTR OF SLOPES	---
EASEMENT FOR CONSTR OF DRIVES	---

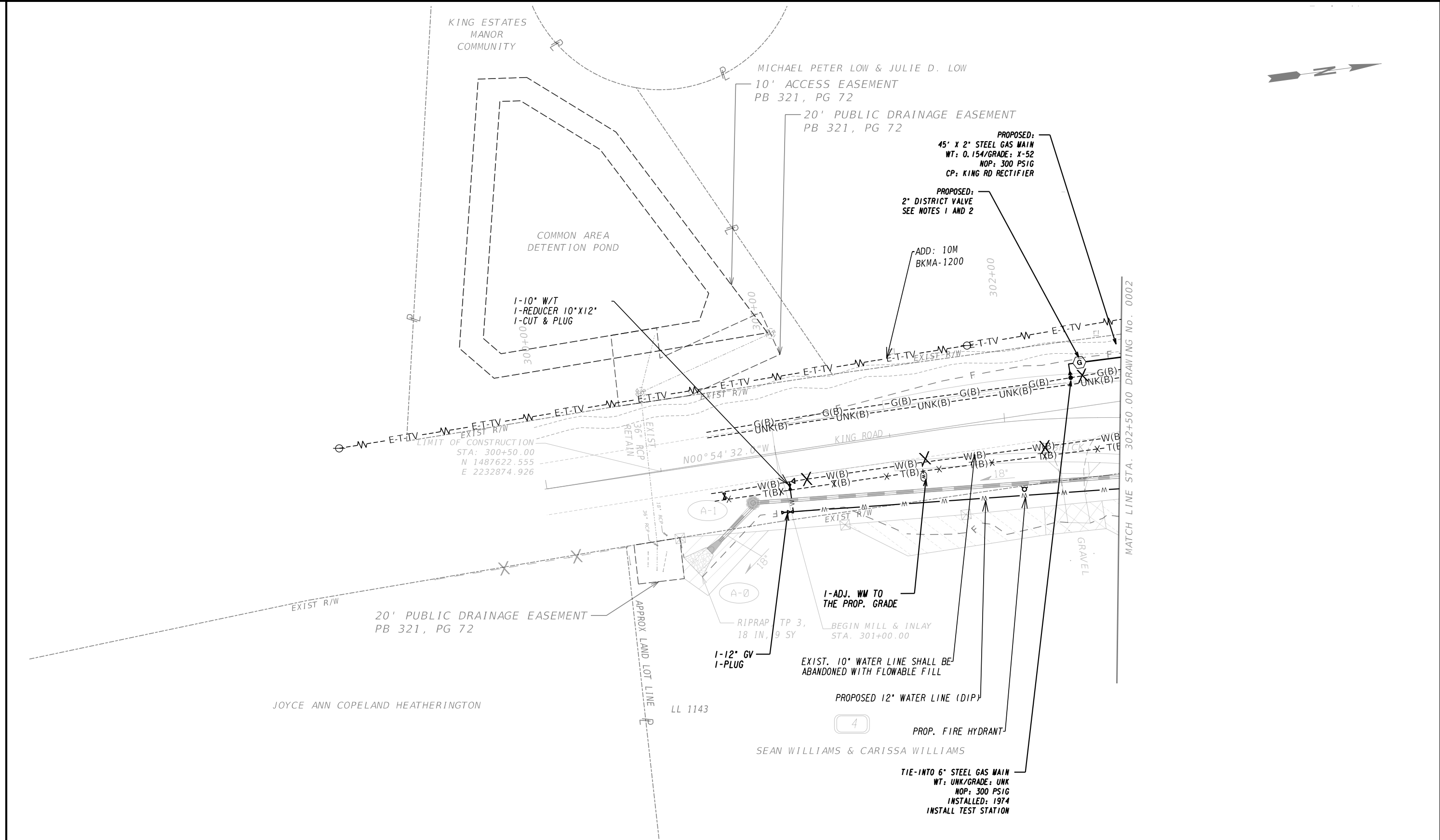
BEGIN LIMIT OF ACCESS.....BLA	---
END LIMIT OF ACCESS.....ELA	---
EXISTING LIMIT OF ACCESS	---
REQ'D LIMIT OF ACCESS	---
EXISTING LIMIT OF ACCESS & R/W	---
REQ'D LIMIT OF ACCESS & R/W	---
ORANGE BARRIER FENCE	---
ESA - ENV. SENSITIVE AREA	---



REVISION DATES	

UTILITY PLANS COX ROAD ROUNDABOUT AT KING ROAD			
CHECKED:	DATE:	CHECKED:	DATE:
BACKCHECKED:	DATE:	CORRECTED:	DATE:
VERIFIED:	DATE:		
DRAWING No.			24-0001





PROPERTY AND EXISTING R/W LINE	---P---	BEGIN LIMIT OF ACCESS.....BLA	---P---
REQUIRED R/W LINE	---	END LIMIT OF ACCESS.....ELA	---P---
CONSTRUCTION LIMITS	---C---F---	EXISTING LIMIT OF ACCESS	---P---
EASEMENT FOR CONSTR & MAINTENANCE OF SLOPES		REQ'D LIMIT OF ACCESS	---P---
EASEMENT FOR CONSTR OF SLOPES		EXISTING LIMIT OF ACCESS & R/W	---P---
EASEMENT FOR CONSTR OF DRIVES		REQ'D LIMIT OF ACCESS & R/W	---P---
		ORANGE BARRIER FENCE	---P---
		ESA - ENV. SENSITIVE AREA	---P---

---P---	BEGIN LIMIT OF ACCESS.....BLA
---	END LIMIT OF ACCESS.....ELA
---C---F---	EXISTING LIMIT OF ACCESS
	REQ'D LIMIT OF ACCESS
	EXISTING LIMIT OF ACCESS & R/W
	REQ'D LIMIT OF ACCESS & R/W
	ORANGE BARRIER FENCE
	ESA - ENV. SENSITIVE AREA

**MILTON**   
EST 2006

**POND**  
Architects • Engineers • Planners

SCALE IN FEET  
0 20 40 80

REVISION DATES	

UTILITY PLANS  
COX ROAD ROUNDABOUT  
AT KING ROAD

CHECKED:	DATE:	DRAWING No.
BACKCHECKED:	DATE:	24-0003
CORRECTED:	DATE:	
VERIFIED:	DATE:	

# Cox Road Roundabout At Kings Road - City of Milton

## WATER MAIN INSTALLATION QUANTITIES & COST ESTIMATE

PAY ITEM #		ITEM	SIZE	QUANTITY	UNIT	Unit Cost	AMOUNT	
171	-	0030	TEMPORARY SILT FENCE, TYPE C		500	LF	\$6.00	\$3,000.00
441	-	0104	CONC SIDEWALK 4 IN	4" thick if req.	10	SY	\$50.00	\$500.00
500	-	3001	CLASS AA CONCRETE, HES (500-3001)		5	CY	\$175.00	\$875.00
611	-	8120	ADJUST WATER METER BOX TO GRADE		4	EA	\$800.00	\$3,200.00
611	-	8140	ADJUST WATER VALVE BOX TO GRADE		2	EA	\$800.00	\$1,600.00
600	-	0001	FLOWABLE FILL		8	CY	\$300.00	\$2,400.00
670	-	1060	WATER MAIN, 6 IN, DIP	6"	10	LF	\$80.00	\$800.00
670	-	1120	WATER MAIN, 12 IN, DIP	12"	423	LF	\$160.00	\$67,680.00
670	-	1600	CUT & PLUG OR REMOVE EXISTING WATERMAIN		2	EA	\$8,000.00	\$16,000.00
670	-	1900	INLINE PLUG		1	EA	\$2,000.00	\$2,000.00
670	-	2500	INSERT VALVE (12" DIA)	If Reqd.	1	EA	\$25,000.00	\$25,000.00
670	-	2120	GATE VALVE, 12 IN	12"	2	EA	\$12,000.00	\$24,000.00
670	-	2002	VALVE MARKER		1	EA	\$50.00	\$50.00
670	-	3169	TAPPING SLEEVE & VALVE ASSEMBLY (or Straight)	16 IN x 12 IN	1	EA	\$16,000.00	\$16,000.00
670	-	3108	TAPPING SLEEVE & VALVE ASSEMBLY (or Straight)	10 IN x 10 IN	1	EA	\$10,000.00	\$10,000.00
670	-	4000	FIRE HYDRANT	W/6" GV	1	EA	\$7,500.00	\$7,500.00
670	-	5620	WATER SERVICE LINE, 3/4 IN	3/4-inch	50	LF	\$30.00	\$1,500.00
670	-	5010	WATER SERVICE LINE, 1 IN	1-inch	50	LF	\$45.00	\$2,250.00
670	-	5020	WATER SERVICE LINE, 2 IN	2-inch	50	LF	\$55.00	\$2,750.00
670	-	9710	RELOCATE EXISTING FIRE HYDRANT	If Reqd.	1	EA	\$2,500.00	\$2,500.00
670	-	9720	RELOCATE EXISTING WATER VALVE, INC BOX	If Reqd.	1	EA	\$1,200.00	\$1,200.00
670	-	9730	RELOCATE EXISTING WATER METER, INC BOX		1	EA	\$1,200.00	\$1,200.00
670	-	9920	REMOVE EXISTING FIRE HYDRANT	If Reqd.	1	EA	\$1,000.00	\$1,000.00
			Note: All pipe fittings & accessories shall be included with pipe (LF) price.					<b>\$193,005.00</b>
			Task Allowance: (As designated by Fulton County Project Manager) 20%					\$38,601.00
			<b>TOTAL COST</b>					<b>\$231,606.00</b>