



To: Honorable Mayor and City Council Members

From: Diana Wheeler, Interim Community Development Director

Date: Submitted on June 30, 2025 for the **July 7, 2025**
Regular Council Meeting

Agenda Item: Approval of Subdivision Plats and Revisions

Signed by:

3C30A325FBE844C...

Department Recommendation:

To approve the subdivision related plats as stated below.

Executive Summary:

The Milton Subdivision Regulations require that the Mayor and City Council approve all Final Plats, Final Plat Re-recording, Revisions and Minor Plats once the matter has been reviewed and certified by the Community Development Director in accordance with the Subdivision Regulations.

1. The Minor Plat for **The Select** described herein consists of **2.015** acres located at **2560 Bethany Bend Road**. The purpose of this plat is to subdivide the property into two lots that are both one acre in size.
2. The Minor Plat for **Larry D. Willis, Austin Jeffery Hodge & Hunter E. Hodge** described herein consists of **7.666** acres located at **13477 Birmingham Highway**. The purpose of this plat is to re-configure property lines for all three existing tracts. Tract sizes range from 1.765 acres – 3.830 acres.
3. The Minor Plat for **Ann Scoggins** described herein consists of **9.125** acres located at **16660 Hopewell Road**. The purpose of this plat is to divide the original parcel, Tract 1 Winterville Farm, Tax ID: 22 515001840686 into 3 tracts that are all 3-acres in size.

SERVICE • TEAMWORK • OWNERSHIP • LEADERSHIP • RURAL HERITAGE

2006 Heritage Walk, Milton, GA 30004 | 678.242.2500 | facebook.com/thecityofmiltonga | info@miltonga.gov | www.miltonga.gov



Consent Agenda Plats Staff Memo

Funding and Fiscal Impact:

None.

Alternatives:

Do not approve.

Legal Review:

None – not required

Concurrent Review:

Steven Krokoff, City Manager

DocuSigned by:
Steven Krokoff
9E6DD808EBB74CF...

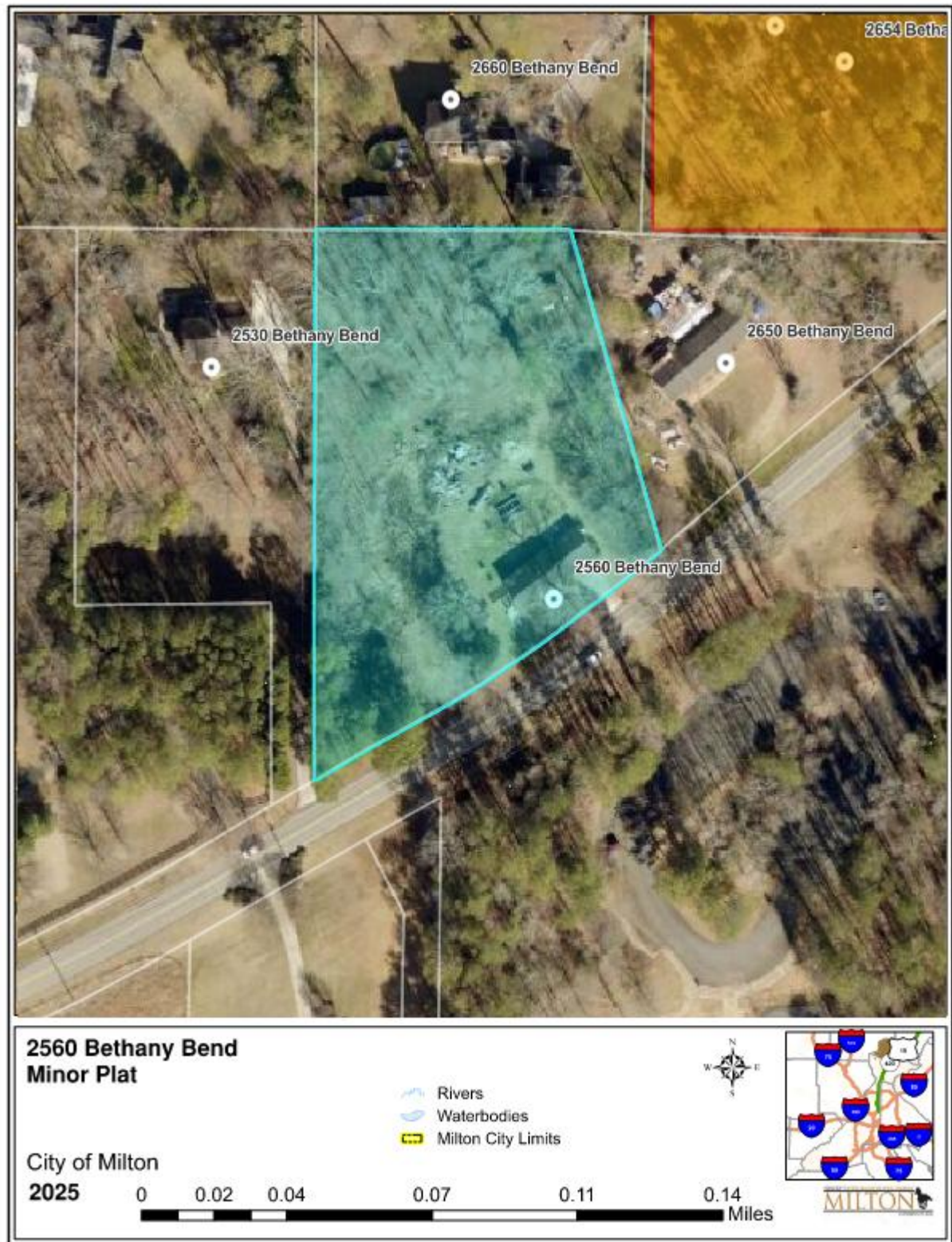
Attachment(s):

Plat List, Location Map, Plats

Name of Development / Location	Action	Comments / # lots	Total Acres	Density
1. The Select 2560 Bethany Bend LL 894 & 895 Dist. 2, Sect. 2	Minor Plat	The purpose of this plat is to subdivide the property into two lots that are both one acre in size.	2.015 Acres	0.49 Lots/Acre
2. Larry D. Willis, Austin Jeffery Hodge & Hunter E. Hodge 13477 Birmingham Hwy LL 954 Dist. 2, Sect. 2	Minor Plat (Revision)	The purpose of this plat revision is to re-configure property lines for all three existing tracts. Tract sizes range from 1.765 acres – 3.830 acres.	7.666 Acres	0.39 Lots/Acre
3. Ann Scoggins 16660 Hopewell Rd LL 184 Dist. 2, Sect. 2	Minor Plat	The purpose of this plat is to subdivide the original parcel, Tract 1 Winterville Farm, into three (3) tracts that are all 3-acres in size.	9.125 Acres	0.32 Lots/Acre



The Select Minor Plat



The Select Minor Plat

OWNER'S CERTIFICATION

(STATE OF GEORGIA)
(CITY OF MILTON)

THE OWNER OF RECORD OF THE LAND SHOWN ON THIS PLAT AND WHOSE NAME IS SUBSCRIBED HEREIN, IN PERSON OR THROUGH A duly AUTHORIZED AGENT, HEREBY CERTIFIES THAT THE INFORMATION CONTAINED ON THIS PLAT IS TRUE AND CORRECT AND THAT THE PLAT IS A TRUE AND CORRECT REPRESENTATION OF THE LAND SHOWN ON THIS PLAT AND THAT THE PLAT IS A TRUE AND CORRECT REPRESENTATION OF THE LAND SHOWN ON THIS PLAT AND THAT THE PLAT IS A TRUE AND CORRECT REPRESENTATION OF THE LAND SHOWN ON THIS PLAT.

OWNER'S SIGNATURE: _____
DATE: _____

PLAT INFORMATION

PLAT NUMBER: _____
PLAT DATE: _____
PLAT AREA: _____
PLAT TYPE: _____
PLAT PURPOSE: _____

GENERAL NOTES

1. THE PLAT IS A TRUE AND CORRECT REPRESENTATION OF THE LAND SHOWN ON THIS PLAT.
2. THE PLAT IS A TRUE AND CORRECT REPRESENTATION OF THE LAND SHOWN ON THIS PLAT.
3. THE PLAT IS A TRUE AND CORRECT REPRESENTATION OF THE LAND SHOWN ON THIS PLAT.
4. THE PLAT IS A TRUE AND CORRECT REPRESENTATION OF THE LAND SHOWN ON THIS PLAT.
5. THE PLAT IS A TRUE AND CORRECT REPRESENTATION OF THE LAND SHOWN ON THIS PLAT.
6. THE PLAT IS A TRUE AND CORRECT REPRESENTATION OF THE LAND SHOWN ON THIS PLAT.
7. THE PLAT IS A TRUE AND CORRECT REPRESENTATION OF THE LAND SHOWN ON THIS PLAT.
8. THE PLAT IS A TRUE AND CORRECT REPRESENTATION OF THE LAND SHOWN ON THIS PLAT.
9. THE PLAT IS A TRUE AND CORRECT REPRESENTATION OF THE LAND SHOWN ON THIS PLAT.
10. THE PLAT IS A TRUE AND CORRECT REPRESENTATION OF THE LAND SHOWN ON THIS PLAT.
11. THE PLAT IS A TRUE AND CORRECT REPRESENTATION OF THE LAND SHOWN ON THIS PLAT.
12. THE PLAT IS A TRUE AND CORRECT REPRESENTATION OF THE LAND SHOWN ON THIS PLAT.

SURVEY NOTES

1. THE SURVEY WAS CONDUCTED BY _____ ON _____.

2. THE SURVEY WAS CONDUCTED BY _____ ON _____.

3. THE SURVEY WAS CONDUCTED BY _____ ON _____.

4. THE SURVEY WAS CONDUCTED BY _____ ON _____.

5. THE SURVEY WAS CONDUCTED BY _____ ON _____.

6. THE SURVEY WAS CONDUCTED BY _____ ON _____.

7. THE SURVEY WAS CONDUCTED BY _____ ON _____.

8. THE SURVEY WAS CONDUCTED BY _____ ON _____.

9. THE SURVEY WAS CONDUCTED BY _____ ON _____.

10. THE SURVEY WAS CONDUCTED BY _____ ON _____.

11. THE SURVEY WAS CONDUCTED BY _____ ON _____.

12. THE SURVEY WAS CONDUCTED BY _____ ON _____.

PLAT INFORMATION

PLAT NUMBER: _____
PLAT DATE: _____
PLAT AREA: _____
PLAT TYPE: _____
PLAT PURPOSE: _____

GENERAL NOTES

1. THE PLAT IS A TRUE AND CORRECT REPRESENTATION OF THE LAND SHOWN ON THIS PLAT.
2. THE PLAT IS A TRUE AND CORRECT REPRESENTATION OF THE LAND SHOWN ON THIS PLAT.
3. THE PLAT IS A TRUE AND CORRECT REPRESENTATION OF THE LAND SHOWN ON THIS PLAT.
4. THE PLAT IS A TRUE AND CORRECT REPRESENTATION OF THE LAND SHOWN ON THIS PLAT.
5. THE PLAT IS A TRUE AND CORRECT REPRESENTATION OF THE LAND SHOWN ON THIS PLAT.
6. THE PLAT IS A TRUE AND CORRECT REPRESENTATION OF THE LAND SHOWN ON THIS PLAT.
7. THE PLAT IS A TRUE AND CORRECT REPRESENTATION OF THE LAND SHOWN ON THIS PLAT.
8. THE PLAT IS A TRUE AND CORRECT REPRESENTATION OF THE LAND SHOWN ON THIS PLAT.
9. THE PLAT IS A TRUE AND CORRECT REPRESENTATION OF THE LAND SHOWN ON THIS PLAT.
10. THE PLAT IS A TRUE AND CORRECT REPRESENTATION OF THE LAND SHOWN ON THIS PLAT.
11. THE PLAT IS A TRUE AND CORRECT REPRESENTATION OF THE LAND SHOWN ON THIS PLAT.
12. THE PLAT IS A TRUE AND CORRECT REPRESENTATION OF THE LAND SHOWN ON THIS PLAT.

PLAT INFORMATION

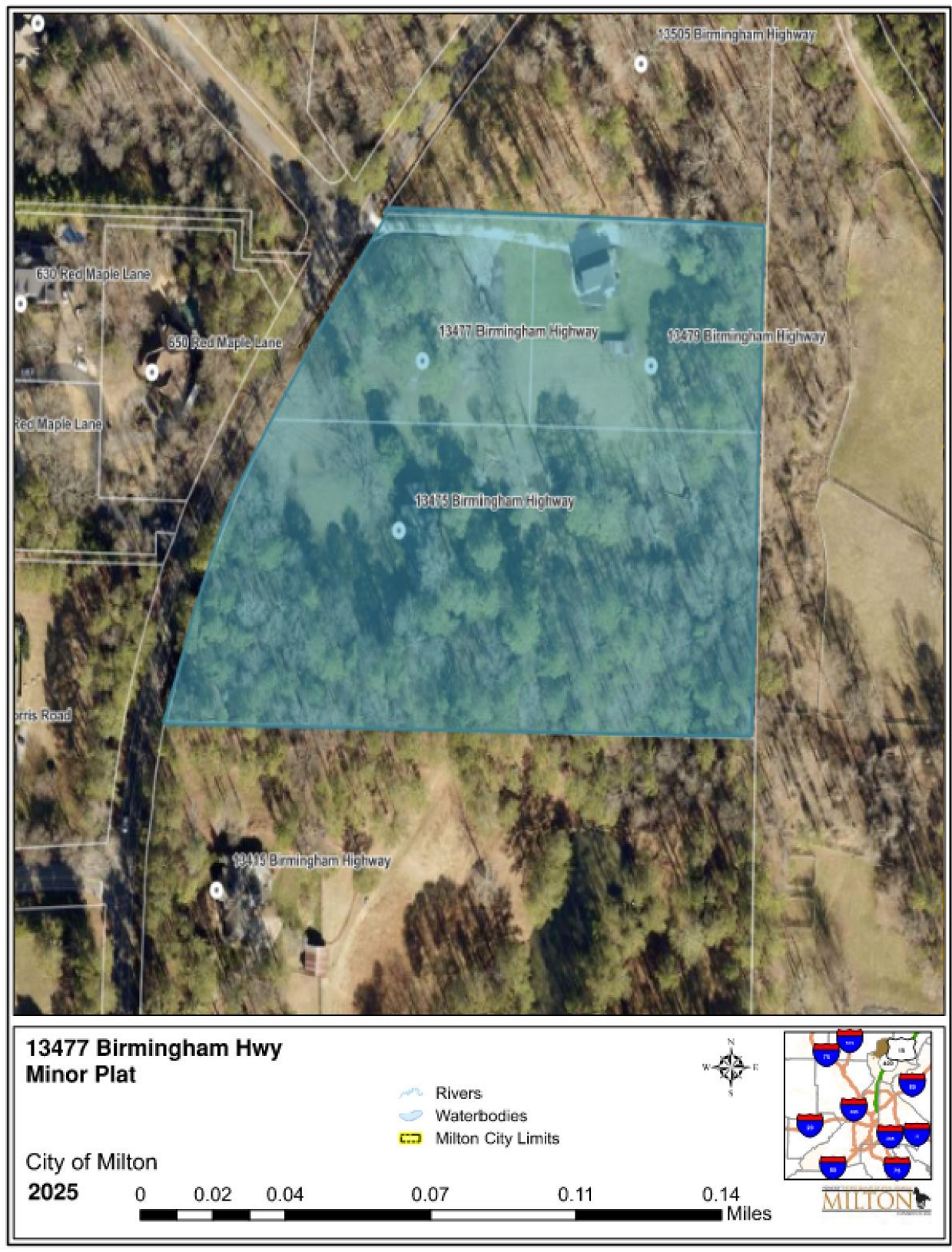
PLAT NUMBER: _____
PLAT DATE: _____
PLAT AREA: _____
PLAT TYPE: _____
PLAT PURPOSE: _____

GENERAL NOTES

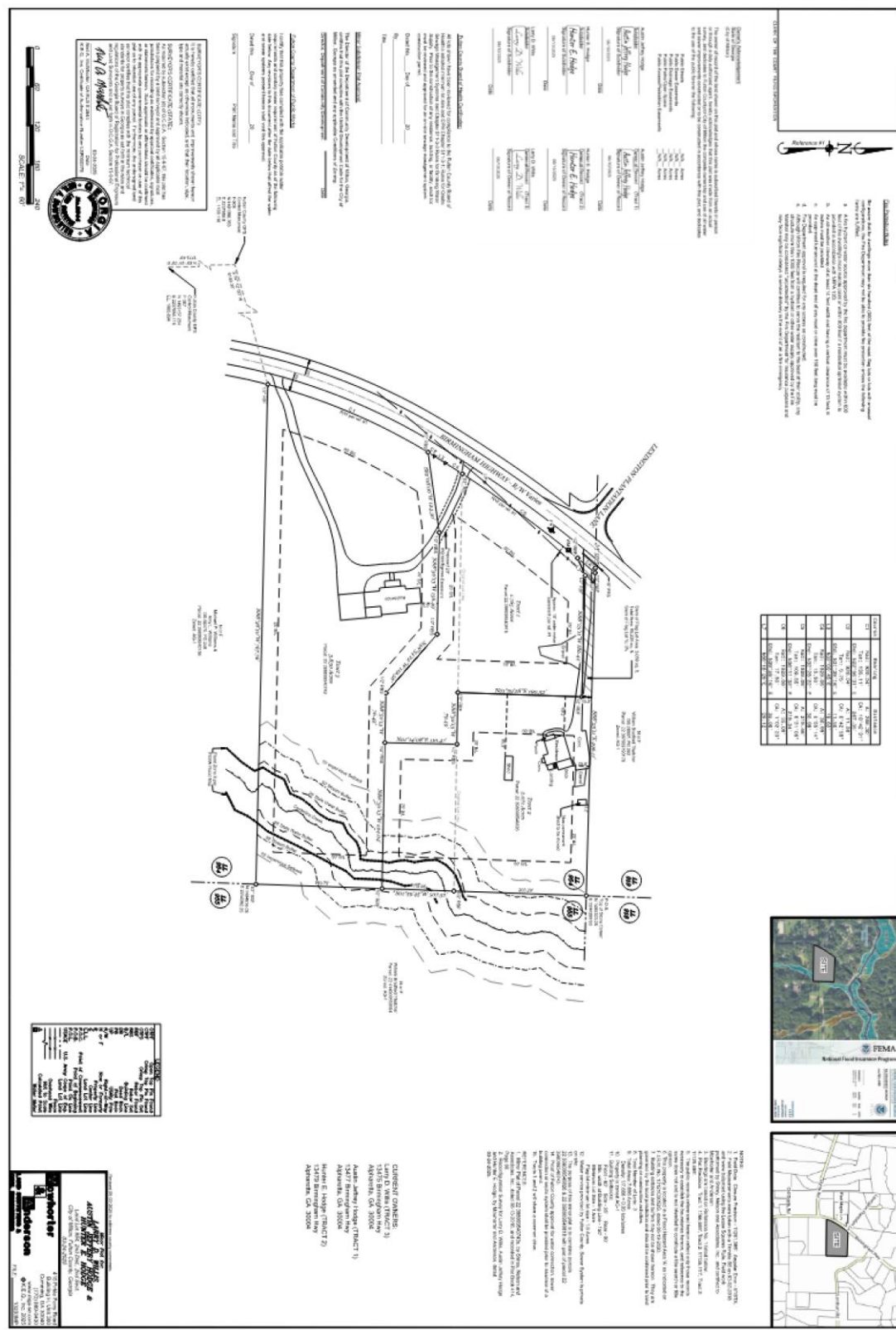
1. THE PLAT IS A TRUE AND CORRECT REPRESENTATION OF THE LAND SHOWN ON THIS PLAT.
2. THE PLAT IS A TRUE AND CORRECT REPRESENTATION OF THE LAND SHOWN ON THIS PLAT.
3. THE PLAT IS A TRUE AND CORRECT REPRESENTATION OF THE LAND SHOWN ON THIS PLAT.
4. THE PLAT IS A TRUE AND CORRECT REPRESENTATION OF THE LAND SHOWN ON THIS PLAT.
5. THE PLAT IS A TRUE AND CORRECT REPRESENTATION OF THE LAND SHOWN ON THIS PLAT.
6. THE PLAT IS A TRUE AND CORRECT REPRESENTATION OF THE LAND SHOWN ON THIS PLAT.
7. THE PLAT IS A TRUE AND CORRECT REPRESENTATION OF THE LAND SHOWN ON THIS PLAT.
8. THE PLAT IS A TRUE AND CORRECT REPRESENTATION OF THE LAND SHOWN ON THIS PLAT.
9. THE PLAT IS A TRUE AND CORRECT REPRESENTATION OF THE LAND SHOWN ON THIS PLAT.
10. THE PLAT IS A TRUE AND CORRECT REPRESENTATION OF THE LAND SHOWN ON THIS PLAT.
11. THE PLAT IS A TRUE AND CORRECT REPRESENTATION OF THE LAND SHOWN ON THIS PLAT.
12. THE PLAT IS A TRUE AND CORRECT REPRESENTATION OF THE LAND SHOWN ON THIS PLAT.



Larry D. Willis, Austin Jeffery Hodge & Hunter E. Hodge Minor Plat



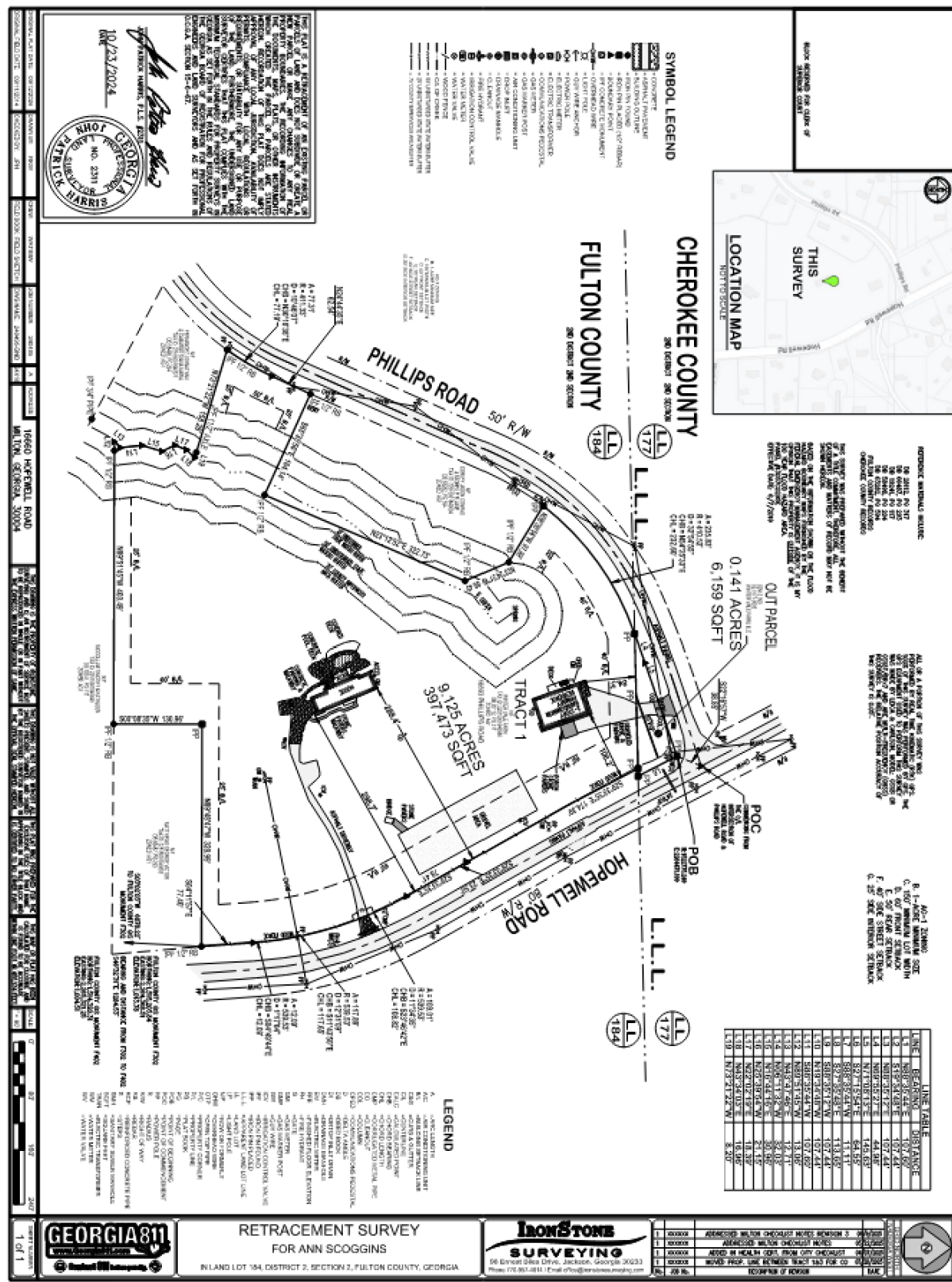
Larry D. Willis, Austin Jeffery Hodge & Hunter E. Hodge Minor Plat



Ann Scoggins Minor Plat



Ann Scoggins Minor Plat



Ann Scoggins Minor Plat

MINOR PLAT
FOR ANN SCOGGINS

IN LAND LOT 177, DISTRICT 2, SECTION 2, CHEROKEE COUNTY, GEORGIA
IN LAND LOT 184, DISTRICT 2, SECTION 2, FULTON COUNTY, GEORGIA

IronStone SURVEYING
56 Orchard Drive, Jackson, Georgia 30223
Phone: 770-963-0811 Email: info@ironstonesurveying.com

GEORGIA 811
1 of 2

LEGEND

- 1. - 1/4" LINE
- 2. - 1/2" LINE
- 3. - 3/4" LINE
- 4. - 1" LINE
- 5. - 1 1/2" LINE
- 6. - 2" LINE
- 7. - 3" LINE
- 8. - 4" LINE
- 9. - 6" LINE
- 10. - 8" LINE
- 11. - 10" LINE
- 12. - 12" LINE
- 13. - 14" LINE
- 14. - 16" LINE
- 15. - 18" LINE
- 16. - 20" LINE
- 17. - 24" LINE
- 18. - 30" LINE
- 19. - 36" LINE
- 20. - 42" LINE
- 21. - 48" LINE
- 22. - 54" LINE
- 23. - 60" LINE
- 24. - 72" LINE
- 25. - 84" LINE
- 26. - 96" LINE
- 27. - 108" LINE
- 28. - 120" LINE
- 29. - 132" LINE
- 30. - 144" LINE
- 31. - 156" LINE
- 32. - 168" LINE
- 33. - 180" LINE
- 34. - 192" LINE
- 35. - 204" LINE
- 36. - 216" LINE
- 37. - 228" LINE
- 38. - 240" LINE
- 39. - 252" LINE
- 40. - 264" LINE
- 41. - 276" LINE
- 42. - 288" LINE
- 43. - 300" LINE
- 44. - 312" LINE
- 45. - 324" LINE
- 46. - 336" LINE
- 47. - 348" LINE
- 48. - 360" LINE
- 49. - 372" LINE
- 50. - 384" LINE
- 51. - 396" LINE
- 52. - 408" LINE
- 53. - 420" LINE
- 54. - 432" LINE
- 55. - 444" LINE
- 56. - 456" LINE
- 57. - 468" LINE
- 58. - 480" LINE
- 59. - 492" LINE
- 60. - 504" LINE
- 61. - 516" LINE
- 62. - 528" LINE
- 63. - 540" LINE
- 64. - 552" LINE
- 65. - 564" LINE
- 66. - 576" LINE
- 67. - 588" LINE
- 68. - 600" LINE
- 69. - 612" LINE
- 70. - 624" LINE
- 71. - 636" LINE
- 72. - 648" LINE
- 73. - 660" LINE
- 74. - 672" LINE
- 75. - 684" LINE
- 76. - 696" LINE
- 77. - 708" LINE
- 78. - 720" LINE
- 79. - 732" LINE
- 80. - 744" LINE
- 81. - 756" LINE
- 82. - 768" LINE
- 83. - 780" LINE
- 84. - 792" LINE
- 85. - 804" LINE
- 86. - 816" LINE
- 87. - 828" LINE
- 88. - 840" LINE
- 89. - 852" LINE
- 90. - 864" LINE
- 91. - 876" LINE
- 92. - 888" LINE
- 93. - 900" LINE
- 94. - 912" LINE
- 95. - 924" LINE
- 96. - 936" LINE
- 97. - 948" LINE
- 98. - 960" LINE
- 99. - 972" LINE
- 100. - 984" LINE
- 101. - 996" LINE
- 102. - 1008" LINE
- 103. - 1020" LINE
- 104. - 1032" LINE
- 105. - 1044" LINE
- 106. - 1056" LINE
- 107. - 1068" LINE
- 108. - 1080" LINE
- 109. - 1092" LINE
- 110. - 1104" LINE
- 111. - 1116" LINE
- 112. - 1128" LINE
- 113. - 1140" LINE
- 114. - 1152" LINE
- 115. - 1164" LINE
- 116. - 1176" LINE
- 117. - 1188" LINE
- 118. - 1200" LINE
- 119. - 1212" LINE
- 120. - 1224" LINE
- 121. - 1236" LINE
- 122. - 1248" LINE
- 123. - 1260" LINE
- 124. - 1272" LINE
- 125. - 1284" LINE
- 126. - 1296" LINE
- 127. - 1308" LINE
- 128. - 1320" LINE
- 129. - 1332" LINE
- 130. - 1344" LINE
- 131. - 1356" LINE
- 132. - 1368" LINE
- 133. - 1380" LINE
- 134. - 1392" LINE
- 135. - 1404" LINE
- 136. - 1416" LINE
- 137. - 1428" LINE
- 138. - 1440" LINE
- 139. - 1452" LINE
- 140. - 1464" LINE
- 141. - 1476" LINE
- 142. - 1488" LINE
- 143. - 1500" LINE
- 144. - 1512" LINE
- 145. - 1524" LINE
- 146. - 1536" LINE
- 147. - 1548" LINE
- 148. - 1560" LINE
- 149. - 1572" LINE
- 150. - 1584" LINE
- 151. - 1596" LINE
- 152. - 1608" LINE
- 153. - 1620" LINE
- 154. - 1632" LINE
- 155. - 1644" LINE
- 156. - 1656" LINE
- 157. - 1668" LINE
- 158. - 1680" LINE
- 159. - 1692" LINE
- 160. - 1704" LINE
- 161. - 1716" LINE
- 162. - 1728" LINE
- 163. - 1740" LINE
- 164. - 1752" LINE
- 165. - 1764" LINE
- 166. - 1776" LINE
- 167. - 1788" LINE
- 168. - 1800" LINE
- 169. - 1812" LINE
- 170. - 1824" LINE
- 171. - 1836" LINE
- 172. - 1848" LINE
- 173. - 1860" LINE
- 174. - 1872" LINE
- 175. - 1884" LINE
- 176. - 1896" LINE
- 177. - 1908" LINE
- 178. - 1920" LINE
- 179. - 1932" LINE
- 180. - 1944" LINE
- 181. - 1956" LINE
- 182. - 1968" LINE
- 183. - 1980" LINE
- 184. - 1992" LINE
- 185. - 2004" LINE
- 186. - 2016" LINE
- 187. - 2028" LINE
- 188. - 2040" LINE
- 189. - 2052" LINE
- 190. - 2064" LINE
- 191. - 2076" LINE
- 192. - 2088" LINE
- 193. - 2100" LINE
- 194. - 2112" LINE
- 195. - 2124" LINE
- 196. - 2136" LINE
- 197. - 2148" LINE
- 198. - 2160" LINE
- 199. - 2172" LINE
- 200. - 2184" LINE
- 201. - 2196" LINE
- 202. - 2208" LINE
- 203. - 2220" LINE
- 204. - 2232" LINE
- 205. - 2244" LINE
- 206. - 2256" LINE
- 207. - 2268" LINE
- 208. - 2280" LINE
- 209. - 2292" LINE
- 210. - 2304" LINE
- 211. - 2316" LINE
- 212. - 2328" LINE
- 213. - 2340" LINE
- 214. - 2352" LINE
- 215. - 2364" LINE
- 216. - 2376" LINE
- 217. - 2388" LINE
- 218. - 2400" LINE
- 219. - 2412" LINE
- 220. - 2424" LINE
- 221. - 2436" LINE
- 222. - 2448" LINE
- 223. - 2460" LINE
- 224. - 2472" LINE



Ann Scoggins Minor Plat

