




To: Honorable Mayor and City Council Members

From: Diana Wheeler, Interim Community Development Director

Date: Submitted on December 31, 2024 for the **January 6, 2025**
Regular Council Meeting

Agenda Item: Approval of Subdivision Plats and Revisions

Signed by:

3C30A325FBE844C...

Department Recommendation:

To approve the subdivision related plats as stated below.

Executive Summary:

The Milton Subdivision Regulations require that the Mayor and City Council approve all Final Plats, Final Plat Re-recording, Revisions and Minor Plats once the matter has been reviewed and certified by the Community Development Director in accordance with the Subdivision Regulations.

1. The Minor Plat for **Braeburn Park** described herein consists of **0.44** acres located at 12780 Lecomma Trace. The purpose of this plat is to identify tracts for proposed land donation of open space and right of way to the City of Milton. **Tract 1** contains **0.08** acres and Tract **2** contains **0.36** acres.

Funding and Fiscal Impact:

None.

Alternatives:

Do not approve.

Legal Review:

None – not required

SERVICE • TEAMWORK • OWNERSHIP • LEADERSHIP • RURAL HERITAGE

2006 Heritage Walk, Milton, GA 30004 | 678.242.2500 | facebook.com/thecityofmiltonga | info@miltonga.gov | www.miltonga.gov



Consent Agenda Plats Staff Memo

Concurrent Review:

Steven Krokoff, City Manager

DocuSigned by:

Steven Krokoff

9E6DD808EBB74CF...

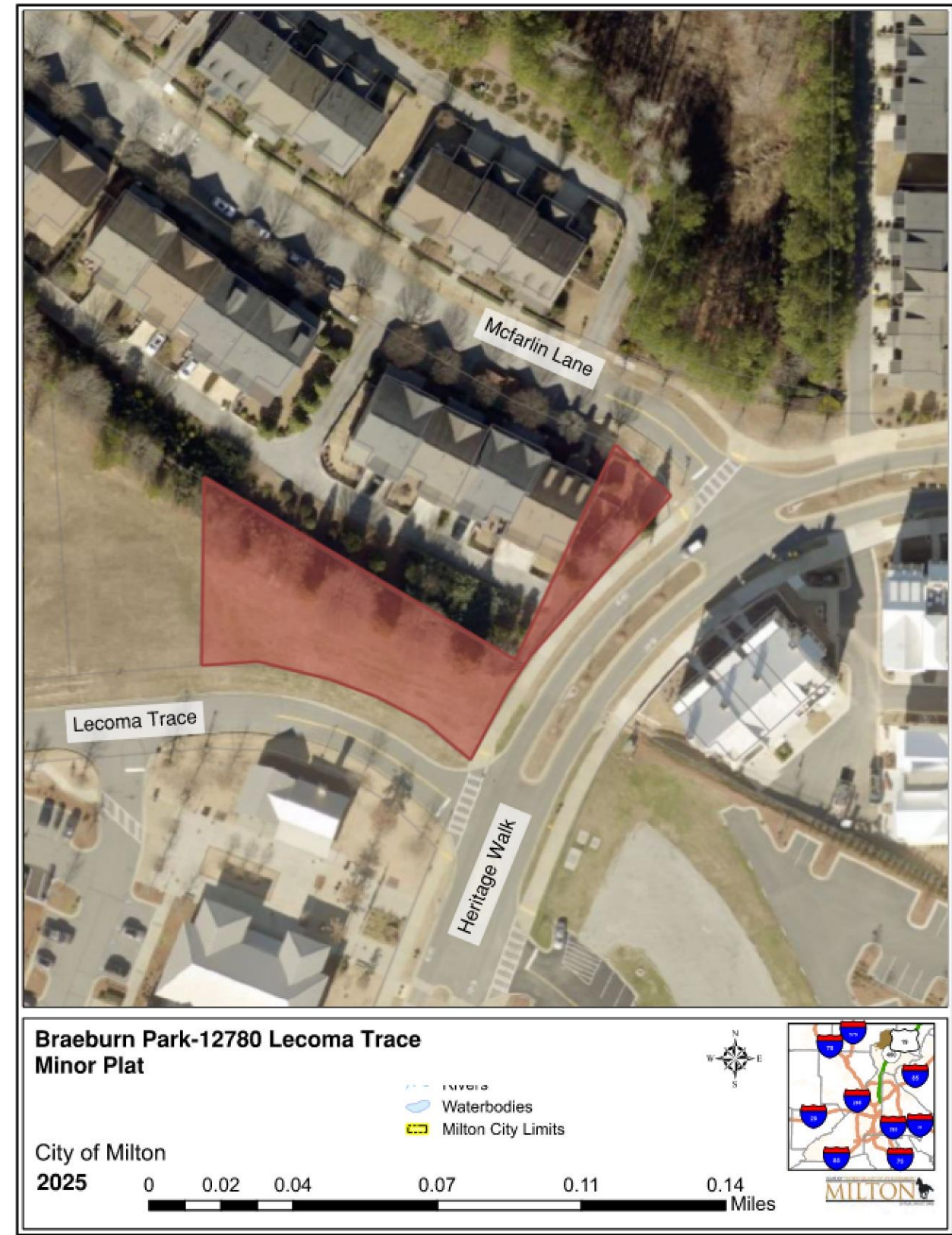
Attachment(s):

Plat List, Location Map, Plats

Name of Development / Location	Action	Comments / # lots	Total Acres	Density
1. Braeburn Park 12780 Lecomma Trace LL 1135 Dist. 2 Sect. 2	Minor Plat	The purpose of this plat is to identify tracts for proposed land donation of open space and right of way to the City of Milton	0.44 Acres	4.5 Lots/Acre



Braeburn Park Minor Plat



Braeburn Park Minor Plat

THIS PLAT IS BEING RECORDED FOR THE CITY OF MILTON, GEORGIA, IN THE OFFICE OF THE CLERK OF THE SUPERIOR COURT.

DATE: 11/20/2024
 TIME: 10:30 AM
 PLACE: 3rd FLOOR
 SIZE: 3' MIN

MINOR PLAT FOR:
BRAEBURN PARK

LAND LOT 1135
 2nd DISTRICT, 2nd SECTION
 FULTON COUNTY, GEORGIA
 CITY OF MILTON

DAVIS ENGINEERS & SURVEYORS
 24 DAWSON VILLAGE
 WAY 500114
 DAWSONVILLE, GA 30534
 PHONE: (770) 266-1234
 DAVISENGINEERS.COM

ENGINEERING & SURVEYING
 24 DAWSON VILLAGE
 WAY 500114
 DAWSONVILLE, GA 30534
 PHONE: (770) 266-1234
 DAVISENGINEERS.COM

NOTICE OF PUBLIC HEARING
 CITY: MILTON
 ZONE: 1A OPEN SPACE
 SETBACK: 10' MIN, 30' MAX
 FRONT: 10' MIN, 30' MAX
 SIDE: 3' MIN

THE DIRECTOR OF THE COMMUNITY DEVELOPMENT DEPARTMENT OF THE CITY OF MILTON, GEORGIA, CERTIFIES THAT THIS PLAT COMPLETES THE REQUIREMENTS OF THE CITY OF MILTON SUBDIVISION REGULATIONS AS AMENDED.

DATE: 11/20/2024
 TIME: 10:30 AM
 PLACE: 3rd FLOOR
 SIZE: 3' MIN

MINOR PLAT FOR:
BRAEBURN PARK

DAVIS ENGINEERS & SURVEYORS
 24 DAWSON VILLAGE
 WAY 500114
 DAWSONVILLE, GA 30534
 PHONE: (770) 266-1234
 DAVISENGINEERS.COM

ENGINEERING & SURVEYING
 24 DAWSON VILLAGE
 WAY 500114
 DAWSONVILLE, GA 30534
 PHONE: (770) 266-1234
 DAVISENGINEERS.COM

DRAINAGE
 THE OWNER OF RECORD OR OWNER OF INTEREST (HEREIN) AND ALL OTHERS HAVE AGREED TO MAINTAIN AND DEFEND THE CITY OF MILTON FROM ANY AND ALL LIABILITY AND RESPONSIBILITY FOR THE DESIGN, CONSTRUCTION, MAINTENANCE, REPAIR, OR REMOVAL OF ANY DRAINAGE SYSTEMS, PAVEMENT, OR OTHER INFRASTRUCTURE. A DRAINAGE SYSTEM SHALL BE THE PROPERTY OF THE CITY OF MILTON. THE CITY OF MILTON SHALL BE RESPONSIBLE FOR THE DESIGN, CONSTRUCTION, MAINTENANCE, REPAIR, OR REMOVAL OF ANY DRAINAGE SYSTEMS, PAVEMENT, OR OTHER INFRASTRUCTURE. THE CITY OF MILTON SHALL BE RESPONSIBLE FOR THE DESIGN, CONSTRUCTION, MAINTENANCE, REPAIR, OR REMOVAL OF ANY DRAINAGE SYSTEMS, PAVEMENT, OR OTHER INFRASTRUCTURE.

FLOOD NOTE
 BASED ON AN INTERPRETATION OF FLOOD RESISTANCE RATE NO. 1312100044, EFFECTIVE DATE 1/18/2011, NO FLOODING OF THIS PROJECT IS LOCATED WITHIN THE 100-YEAR FLOOD PHASE AND 500-YEAR FLOOD PHASE. THE CITY OF MILTON SHALL BE RESPONSIBLE FOR THE DESIGN, CONSTRUCTION, MAINTENANCE, REPAIR, OR REMOVAL OF ANY FLOOD PROTECTION SYSTEMS, PAVEMENT, OR OTHER INFRASTRUCTURE. THE CITY OF MILTON SHALL BE RESPONSIBLE FOR THE DESIGN, CONSTRUCTION, MAINTENANCE, REPAIR, OR REMOVAL OF ANY FLOOD PROTECTION SYSTEMS, PAVEMENT, OR OTHER INFRASTRUCTURE.

OWNER'S ACKNOWLEDGEMENT
 STATE OF GEORGIA (CITY OF MILTON)
 THE OWNER OF RECORD OF THE LAND SHOWN ON THIS PLAT HAS AGREED TO MAINTAIN AND DEFEND THE CITY OF MILTON FROM ANY AND ALL LIABILITY AND RESPONSIBILITY FOR THE DESIGN, CONSTRUCTION, MAINTENANCE, REPAIR, OR REMOVAL OF ANY DRAINAGE SYSTEMS, PAVEMENT, OR OTHER INFRASTRUCTURE. THE CITY OF MILTON SHALL BE RESPONSIBLE FOR THE DESIGN, CONSTRUCTION, MAINTENANCE, REPAIR, OR REMOVAL OF ANY DRAINAGE SYSTEMS, PAVEMENT, OR OTHER INFRASTRUCTURE.

OWNERS ACKNOWLEDGEMENT
 STATE OF GEORGIA (CITY OF MILTON)
 THE OWNER OF RECORD OF THE LAND SHOWN ON THIS PLAT HAS AGREED TO MAINTAIN AND DEFEND THE CITY OF MILTON FROM ANY AND ALL LIABILITY AND RESPONSIBILITY FOR THE DESIGN, CONSTRUCTION, MAINTENANCE, REPAIR, OR REMOVAL OF ANY DRAINAGE SYSTEMS, PAVEMENT, OR OTHER INFRASTRUCTURE. THE CITY OF MILTON SHALL BE RESPONSIBLE FOR THE DESIGN, CONSTRUCTION, MAINTENANCE, REPAIR, OR REMOVAL OF ANY DRAINAGE SYSTEMS, PAVEMENT, OR OTHER INFRASTRUCTURE.

FULTON COUNTY BOARD OF HEALTH
 ENVIRONMENTAL HEALTH
 THE BOARD OF HEALTH HAS REVIEWED THE PLAT AND HAS DETERMINED THAT THE PLAT COMPLETES THE REQUIREMENTS OF THE CITY OF MILTON SUBDIVISION REGULATIONS AS AMENDED.

ENVIRONMENTAL HEALTH
 THE BOARD OF HEALTH HAS REVIEWED THE PLAT AND HAS DETERMINED THAT THE PLAT COMPLETES THE REQUIREMENTS OF THE CITY OF MILTON SUBDIVISION REGULATIONS AS AMENDED.

PLAT INFORMATION
 THE PLAT WAS PREPARED FOR THE CITY OF MILTON, GEORGIA, IN THE OFFICE OF THE CLERK OF THE SUPERIOR COURT. THE PLAT WAS PREPARED FOR THE CITY OF MILTON, GEORGIA, IN THE OFFICE OF THE CLERK OF THE SUPERIOR COURT.

PLAT INFORMATION
 THE PLAT WAS PREPARED FOR THE CITY OF MILTON, GEORGIA, IN THE OFFICE OF THE CLERK OF THE SUPERIOR COURT. THE PLAT WAS PREPARED FOR THE CITY OF MILTON, GEORGIA, IN THE OFFICE OF THE CLERK OF THE SUPERIOR COURT.

PLAT INFORMATION
 THE PLAT WAS PREPARED FOR THE CITY OF MILTON, GEORGIA, IN THE OFFICE OF THE CLERK OF THE SUPERIOR COURT. THE PLAT WAS PREPARED FOR THE CITY OF MILTON, GEORGIA, IN THE OFFICE OF THE CLERK OF THE SUPERIOR COURT.

PLAT INFORMATION
 THE PLAT WAS PREPARED FOR THE CITY OF MILTON, GEORGIA, IN THE OFFICE OF THE CLERK OF THE SUPERIOR COURT. THE PLAT WAS PREPARED FOR THE CITY OF MILTON, GEORGIA, IN THE OFFICE OF THE CLERK OF THE SUPERIOR COURT.

PLAT INFORMATION
 THE PLAT WAS PREPARED FOR THE CITY OF MILTON, GEORGIA, IN THE OFFICE OF THE CLERK OF THE SUPERIOR COURT. THE PLAT WAS PREPARED FOR THE CITY OF MILTON, GEORGIA, IN THE OFFICE OF THE CLERK OF THE SUPERIOR COURT.

PLAT INFORMATION
 THE PLAT WAS PREPARED FOR THE CITY OF MILTON, GEORGIA, IN THE OFFICE OF THE CLERK OF THE SUPERIOR COURT. THE PLAT WAS PREPARED FOR THE CITY OF MILTON, GEORGIA, IN THE OFFICE OF THE CLERK OF THE SUPERIOR COURT.



Braeburn Park Minor Plat

