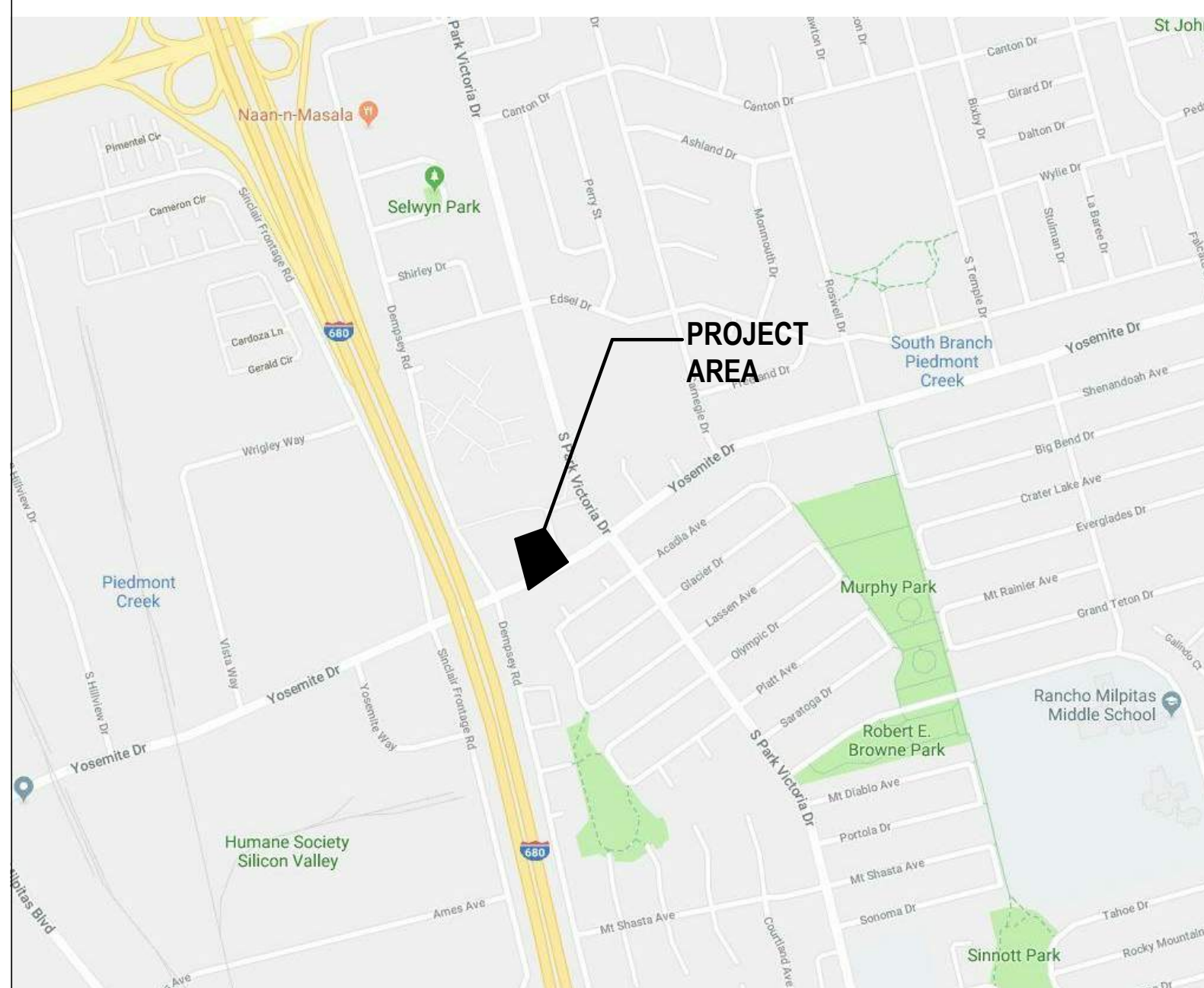
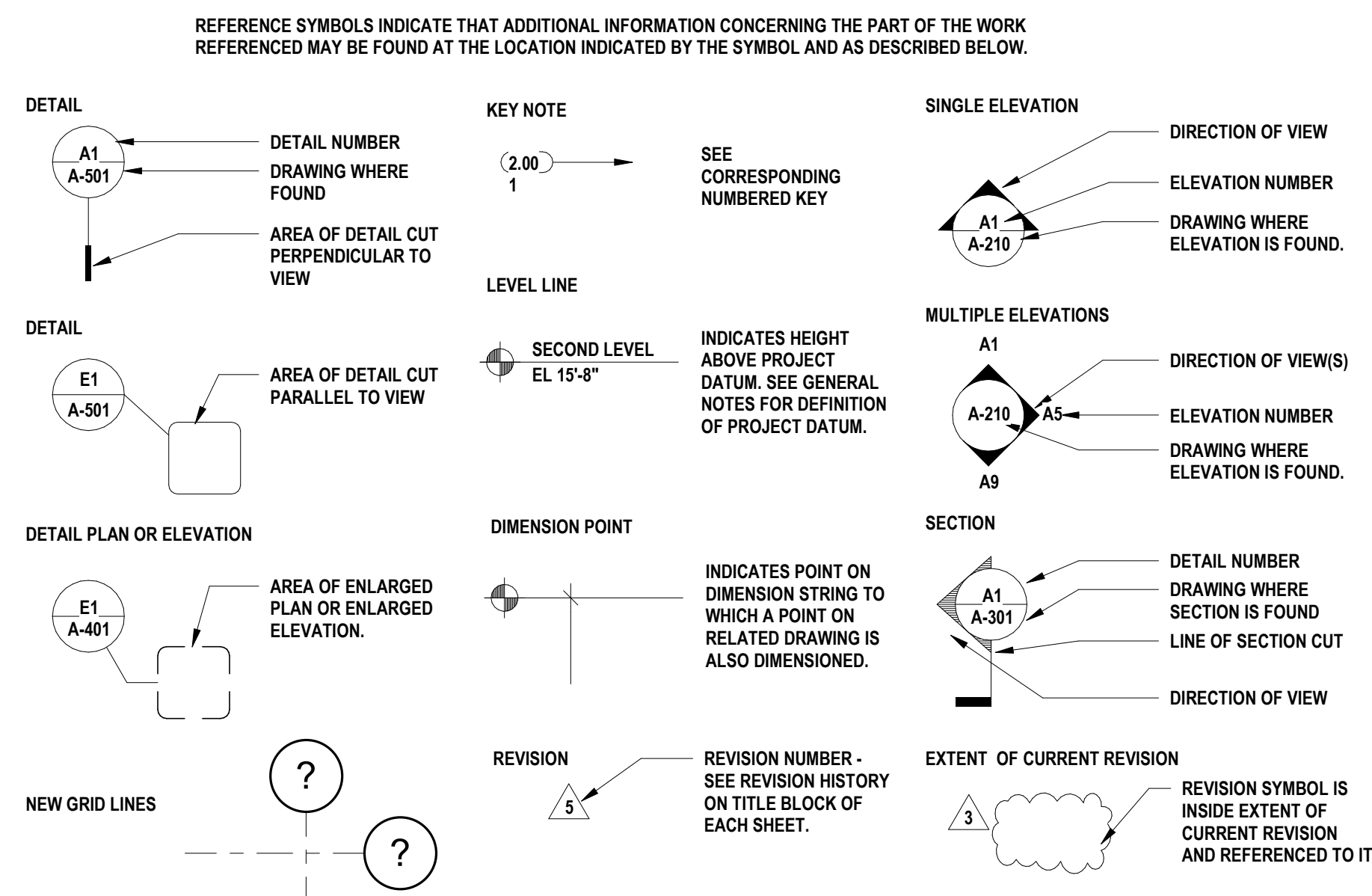




## PROJECT AREA



SHEET INDEX	
Sheet Number	Sheet Name
ARCHITECTURAL	
A-000	COVER SHEET
A-002	ABBREVIATIONS & CODE SUMMARY
A-003	CODE DIAGRAM / MEANS OF EGRESS
A-004	SIGHTLINE AND BUILDING SECTIONS DIAGRAMS
A-101	SITE PLAN VICINITY PLAN
A-102	TEMPORARY RELOCATION PLAN DIAGRAM
A-120	FLOOR PLAN
A-121	ROOF PLAN
A-201	EXTERIOR ELEVATIONS
A-301	BUILDING SECTIONS
A-401	RENDERED PRESPECTIVES

NOTE: If this drawing is not 34"x22" it has been revised from its original size and the scales noted on drawing/details are no longer applicable.

© 2018 Shah Kawasaki Architects

[illegible]

**CITY OF MILPITAS FIRE STATION NO. 2  
REPLACEMENT**  
1263 YOSEMITE DR. MILPITAS, CA 95035

Architect of Record  
S H A H  
KAWASAKI  
ARCHITECTS  
570 10th Street, Suite 201  
Oakland, CA 94612

Consultant

COVER SHEET


Drawing No.

A-000

SKA Project Number: 18725.00

**NOT FOR CONSTRUCTION**



	16	15	14	13	12	11	10	9	8	7	6	5	4	3	2	1																																																																																																																																																																																																																																																																																																																																																																																																																																																																																																																																																																																																																																																																					
M	ABBREVIATIONS						CODE SUMMARY												M																																																																																																																																																																																																																																																																																																																																																																																																																																																																																																																																																																																																																																																																		
L	< # & (E) (N) @	ANGLE (DEGREES) POUND / NUMBER AND EXISTING NEW AT	ID IN INCAND INFO INT INV	INSIDE DIAMETER / DIMENSION INCH INCANDESCENT INFORMATION INTERIOR INVERT	T&B T&G THRU TO TOB TOC TOD TOP TOS TOW TPD TYP	TOP & BOTTOM TONGUE & GROOVE THROUGH TOP OF TOP OF BEAM TOP OF CONCRETE TOP OF DECK TOP OF PLATE OR PARAPET TOP OF SLAB TOP OF WALL TOILET PAPER DISPENSER TYPICAL	<b>APPLICABLE CODES</b> 2016 CALIFORNIA BUILDING CODE PART 2 VOLUME 1 AND 2 2016 CALIFORNIA ELECTRICAL CODE 2016 CALIFORNIA MECHANICAL CODE 2016 CALIFORNIA PLUMBING CODE 2016 CALIFORNIA ENERGY CODE 2016 CALIFORNIA FIRE CODE 2016 CALIFORNIA GREEN BUILDING CODE (CAL GREEN) 2016 CALIFORNIA REFERENCE STANDARDS CODE 2017 MILPITAS MUNICIPAL CODE (MMC)  NFPA 10, STANDARD FOR PORTABLE FIRE EXTINGUISHERS NFPA 13, STANDARD FOR THE INSTALLATION OF SPRINKLER SYSTEMS NFPA 14, STANDARD FOR THE INSTALLATION OF STANDPIPE AND HOSE SYSTEMS NFPA 20, STANDARD FOR THE INSTALLATION OF STATIONARY PUMPS FOR FIRE PROTECTION, 2016 EDITION NFPA 30, FLAMMABLE AND COMBUSTIBLE LIQUID CODE, 2012 EDITION NFPA 72, NATIONAL FIRE ALARM SIGNALING CODE NFPA 80, FIRE DOORS AND OTHER OPENING PROTECTIVES, 2016 EDITION NFPA 1221, STANDARD FOR THE INSTALLATION, MAINTENANCE, AND USE OF EMERGENCY SERVICES COMMUNICATIONS SYSTEMS ASCE 7-10 MINIMUM DESIGN LOADS FOR BUILDINGS AND OTHER STRUCTURES  ACCESSIBILITY REQUIREMENTS GOVERNED BY AMERICANS WITH DISABILITIES ACT (ADA), TITLE II, ADAAG 2010 ADA STANDARDS FOR ACCESSIBLE DESIGN 2016 CALIFORNIA BUILDING CODE, PART 2, VOLUME 1, CHAPTER 11B										<b>CHAPTER 10 GENERAL MEANS OF EGRESS AND OCCUPANT LOAD</b> TABLE 1004.1.2 MAXIMUM FLOOR AREA ALLOWANCES PER OCCUPANT  <table><tr><th>FUNCTION OF SPACE</th><th>TOTAL AREA</th><th>LOAD FACTOR</th><th>MAX OCC. LOAD (CUMULATIVE)</th></tr><tr><td>BUSINESS AREA</td><td>817 SF</td><td>100</td><td>2 OCC.</td></tr><tr><td>GARAGE (APPARATUS BAY)</td><td>5007</td><td>200</td><td>25 OCC.</td></tr><tr><td>RESTROOMS</td><td>234</td><td>0</td><td>0 OCC.</td></tr><tr><td>STORAGE</td><td>169</td><td>300</td><td>2 OCC.</td></tr><tr><td>CIRCULATION</td><td>457</td><td>0</td><td>0 OCC.</td></tr><tr><td>ASSEMBLY (UNCONCENTRATED)</td><td>364</td><td>15</td><td>25 OCC.</td></tr><tr><td>EXERCISE ROOM</td><td>409</td><td>50</td><td>9 OCC.</td></tr><tr><td>RESIDENTIAL</td><td>1531</td><td>200</td><td>14 OCC.</td></tr><tr><td colspan="4">TOTAL: 78</td></tr></table> TWO EXITS ARE REQUIRED WHERE OCCUPANT LOAD OR COMMON PATH OF TRAVEL EXCEEDS TABLE 1006.2.1: <table><tr><th>OCC. TYPE</th><th>MAX. OCC. LOAD</th><th>MAX. DISTANCE</th><th>EXITS REQ.</th><th>EXITS PROVIDED</th></tr><tr><td>B</td><td>49</td><td>100</td><td>1</td><td>2</td></tr><tr><td>R-2</td><td>10</td><td>125</td><td>2</td><td>2</td></tr><tr><td>S-2</td><td>29</td><td>100</td><td>2</td><td>2</td></tr></table> CBC 1007.1.1 TWO EXITS OR EXIT ACCESS DOORWAYS EXCEPTION 2. WHERE A BUILDING IS EQUIPPED THROUGHOUT WITH AN AUTOMATIC SPRINKLER SYSTEM IN ACCORDANCE WITH SECTION 903.3.1.1 OR 903.3.1.2, THE SEPARATION DISTANCE OF THE EXIT DOORS OR EXIT ACCESS DOORWAYS SHALL NOT BE LESS THAN ONE-THIRD OF THE LENGTH OF THE MAXIMUM OVERALL DIAGONAL DIMENSION OF THE AREA SERVED.  EXIT DOORWAY SEPERATION DISTANCE PER CBC 1007.1.1 EXCEPTION 2: <table><tr><th>REQ. MINIMUM</th><th>PROVIDED</th></tr><tr><td>1/3 OF OVERALL BUILDING DIAGONAL (142' / 3 - 48 FT)</td><td>118' 1 - 1 1/2"</td></tr></table> CBC TABLE 1017.2 EXIT ACCESS TRAVEL DISTANCE PER CBC TABLE 1017.2: <table><tr><th>OCCUPANCY TYPE</th><th>DISTANCE</th></tr><tr><td>RESIDENTIAL, R-2</td><td>250 FT</td></tr><tr><td>BUSINESS, B</td><td>300 FT</td></tr><tr><td>STORAGE, S-2</td><td>400 FT</td></tr></table> CORRIDOR FIRE RESISTANCE RATING PER CBC TABLE 1020.1 <table><tr><th>OCCUPANCY TYPE</th><th>OCCUPANT LOAD</th><th>REQ. RATING</th><th>PROVIDED</th></tr><tr><td>B</td><td>&gt;30</td><td>0</td><td>0</td></tr><tr><td>R-2</td><td>&gt;10</td><td>0 PER CBC 1020.1 EXCEPTION 2</td><td>0</td></tr><tr><td>S</td><td>&gt;30</td><td>0</td><td>0</td></tr></table> PER CBC 1020.1 EXCEPTION 2 A FIRE-RESISTANCE RATING IS NOT REQUIRED FOR CORRIDORS CONTAINED WITHIN A DWELLING UNIT OR SLEEPING UNIT IN AN OCCUPANCY IN GROUP R.  MAXIMUM DEAD END CORRIDOR LENGTH PER CBC 1020.4 EXCEPTION 2: 50 FT  CBC 1030 EMERGENCY ESCAPE AND RESCUE OPENING 1030.2 MINIMUM SIZE. EMERGENCY ESCAPE AND RESCUE OPENINGS SHALL HAVE A MINIMUM NET CLEAR OPENING OF 5.7 SQUARE FEET.  1030.2.1 MINIMUM DIMENSIONS. THE MINIMUM NET CLEAR OPENING HEIGHT DIMENSION SHALL BE 24 INCHES. THE MINIMUM NET CLEAR OPENING WIDTH DIMENSION SHALL BE 20 INCHES. THE NET CLEAR OPENING DIMENSIONS SHALL BE THE RESULT OF NORMAL OPERATION OF THE OPENING.  1030.3 MAXIMUM HEIGHT FROM FLOOR. EMERGENCY ESCAPE AND RESCUE OPENINGS SHALL HAVE THE BOTTOM OF THE CLEAR OPENING NOT GREATER THAN 44 INCHES MEASURED FROM THE FLOOR.  <b>CHAPTER 11A HOUSING ACCESSIBILITY.</b> RESIDENTIAL PORTIONS OF THE BUILDING WILL COMPLY WITH THIS CHAPTER, INCLUDING THE RESIDENTIAL DORMS, RESIDENTIAL RESTROOMS, DAY ROOM, DINING ROOM AND KITCHEN.  <b>CHAPTER 11B ACCESSIBILITY TO PUBLIC BUILDINGS, PUBLIC ACCOMIDATIONS, COMMERCIAL BUILDINGS AND PUBLIC HOUSING</b> PUBLIC PORTIONS OD THE BUILDING WILL COMPLY WITH THIS CHAPTER, INCLUDING SITE AMENITIES, WATCHROOM, PUBLIC RESTROOM, COMMUNITY / TRAINING ROOM.		FUNCTION OF SPACE	TOTAL AREA	LOAD FACTOR	MAX OCC. LOAD (CUMULATIVE)	BUSINESS AREA	817 SF	100	2 OCC.	GARAGE (APPARATUS BAY)	5007	200	25 OCC.	RESTROOMS	234	0	0 OCC.	STORAGE	169	300	2 OCC.	CIRCULATION	457	0	0 OCC.	ASSEMBLY (UNCONCENTRATED)	364	15	25 OCC.	EXERCISE ROOM	409	50	9 OCC.	RESIDENTIAL	1531	200	14 OCC.	TOTAL: 78				OCC. TYPE	MAX. OCC. LOAD	MAX. DISTANCE	EXITS REQ.	EXITS PROVIDED	B	49	100	1	2	R-2	10	125	2	2	S-2	29	100	2	2	REQ. MINIMUM	PROVIDED	1/3 OF OVERALL BUILDING DIAGONAL (142' / 3 - 48 FT)	118' 1 - 1 1/2"	OCCUPANCY TYPE	DISTANCE	RESIDENTIAL, R-2	250 FT	BUSINESS, B	300 FT	STORAGE, S-2	400 FT	OCCUPANCY TYPE	OCCUPANT LOAD	REQ. RATING	PROVIDED	B	>30	0	0	R-2	>10	0 PER CBC 1020.1 EXCEPTION 2	0	S	>30	0	0	K																																																																																																																																																																																																																																																																																																																																																																																																																																																																																																																																																																										
FUNCTION OF SPACE	TOTAL AREA	LOAD FACTOR	MAX OCC. LOAD (CUMULATIVE)																																																																																																																																																																																																																																																																																																																																																																																																																																																																																																																																																																																																																																																																																		
BUSINESS AREA	817 SF	100	2 OCC.																																																																																																																																																																																																																																																																																																																																																																																																																																																																																																																																																																																																																																																																																		
GARAGE (APPARATUS BAY)	5007	200	25 OCC.																																																																																																																																																																																																																																																																																																																																																																																																																																																																																																																																																																																																																																																																																		
RESTROOMS	234	0	0 OCC.																																																																																																																																																																																																																																																																																																																																																																																																																																																																																																																																																																																																																																																																																		
STORAGE	169	300	2 OCC.																																																																																																																																																																																																																																																																																																																																																																																																																																																																																																																																																																																																																																																																																		
CIRCULATION	457	0	0 OCC.																																																																																																																																																																																																																																																																																																																																																																																																																																																																																																																																																																																																																																																																																		
ASSEMBLY (UNCONCENTRATED)	364	15	25 OCC.																																																																																																																																																																																																																																																																																																																																																																																																																																																																																																																																																																																																																																																																																		
EXERCISE ROOM	409	50	9 OCC.																																																																																																																																																																																																																																																																																																																																																																																																																																																																																																																																																																																																																																																																																		
RESIDENTIAL	1531	200	14 OCC.																																																																																																																																																																																																																																																																																																																																																																																																																																																																																																																																																																																																																																																																																		
TOTAL: 78																																																																																																																																																																																																																																																																																																																																																																																																																																																																																																																																																																																																																																																																																					
OCC. TYPE	MAX. OCC. LOAD	MAX. DISTANCE	EXITS REQ.	EXITS PROVIDED																																																																																																																																																																																																																																																																																																																																																																																																																																																																																																																																																																																																																																																																																	
B	49	100	1	2																																																																																																																																																																																																																																																																																																																																																																																																																																																																																																																																																																																																																																																																																	
R-2	10	125	2	2																																																																																																																																																																																																																																																																																																																																																																																																																																																																																																																																																																																																																																																																																	
S-2	29	100	2	2																																																																																																																																																																																																																																																																																																																																																																																																																																																																																																																																																																																																																																																																																	
REQ. MINIMUM	PROVIDED																																																																																																																																																																																																																																																																																																																																																																																																																																																																																																																																																																																																																																																																																				
1/3 OF OVERALL BUILDING DIAGONAL (142' / 3 - 48 FT)	118' 1 - 1 1/2"																																																																																																																																																																																																																																																																																																																																																																																																																																																																																																																																																																																																																																																																																				
OCCUPANCY TYPE	DISTANCE																																																																																																																																																																																																																																																																																																																																																																																																																																																																																																																																																																																																																																																																																				
RESIDENTIAL, R-2	250 FT																																																																																																																																																																																																																																																																																																																																																																																																																																																																																																																																																																																																																																																																																				
BUSINESS, B	300 FT																																																																																																																																																																																																																																																																																																																																																																																																																																																																																																																																																																																																																																																																																				
STORAGE, S-2	400 FT																																																																																																																																																																																																																																																																																																																																																																																																																																																																																																																																																																																																																																																																																				
OCCUPANCY TYPE	OCCUPANT LOAD	REQ. RATING	PROVIDED																																																																																																																																																																																																																																																																																																																																																																																																																																																																																																																																																																																																																																																																																		
B	>30	0	0																																																																																																																																																																																																																																																																																																																																																																																																																																																																																																																																																																																																																																																																																		
R-2	>10	0 PER CBC 1020.1 EXCEPTION 2	0																																																																																																																																																																																																																																																																																																																																																																																																																																																																																																																																																																																																																																																																																		
S	>30	0	0																																																																																																																																																																																																																																																																																																																																																																																																																																																																																																																																																																																																																																																																																		
J	d DEG DEMO DIA DIM DISP DN DTL DWG(S)	PENNY (NAILS) DEGREES DEMOLITION DIAMETER DIMENSION DISPENSER / DISPOSAL DOWN DETAIL DRAWING(S)	(N) N/A NEC NO NOM NTS	NEW NOT APPLICABLE NECESSARY NOT IN CONTRACT NUMBER NOMINAL NOT TO SCALE	WO WP WR WSCOT	WHERE OCCURS WORK POINT / WATERPROOF WATER RESISTANT WAINSCOT	<b>CHAPTER 3 USE AND OCCUPANCY CLASSIFICATIONS</b>  OCCUPANCY GROUPS <table><tr><th>GROUP</th><th>DESCRIPTION</th><th>SECTION</th><th>AREA (GROSS)</th></tr><tr><td>R-2</td><td>RESIDENTIAL GROUP</td><td>SECTION 310.4</td><td>3,827 SF</td></tr><tr><td>S-2</td><td>LOW HAZARD STORAGE GROUP</td><td>SECTION 311.3</td><td>5,655 SF</td></tr><tr><td>B</td><td>BUSINESS GROUP</td><td>SECTION 304.1</td><td>817 SF</td></tr><tr><td colspan="3">TOTAL BUILDING AREA (GROSS)</td><td>10,300 SF</td></tr></table> TYPE OF CONSTRUCTION V-B  FIRE PROTECTION SYSTEM: S (WITHOUT AREA INCREASE) THE BUILDING WILL BE EQUIPPED THROUGHOUT WITH AN AUTOMATIC FIRE SPRINKLER SYSTEM INSTALLED IN ACCORDANCE WITH CBC 903.3.1.1										GROUP	DESCRIPTION	SECTION	AREA (GROSS)	R-2	RESIDENTIAL GROUP	SECTION 310.4	3,827 SF	S-2	LOW HAZARD STORAGE GROUP	SECTION 311.3	5,655 SF	B	BUSINESS GROUP	SECTION 304.1	817 SF	TOTAL BUILDING AREA (GROSS)			10,300 SF	J																																																																																																																																																																																																																																																																																																																																																																																																																																																																																																																																																																																																																																																
GROUP	DESCRIPTION	SECTION	AREA (GROSS)																																																																																																																																																																																																																																																																																																																																																																																																																																																																																																																																																																																																																																																																																		
R-2	RESIDENTIAL GROUP	SECTION 310.4	3,827 SF																																																																																																																																																																																																																																																																																																																																																																																																																																																																																																																																																																																																																																																																																		
S-2	LOW HAZARD STORAGE GROUP	SECTION 311.3	5,655 SF																																																																																																																																																																																																																																																																																																																																																																																																																																																																																																																																																																																																																																																																																		
B	BUSINESS GROUP	SECTION 304.1	817 SF																																																																																																																																																																																																																																																																																																																																																																																																																																																																																																																																																																																																																																																																																		
TOTAL BUILDING AREA (GROSS)			10,300 SF																																																																																																																																																																																																																																																																																																																																																																																																																																																																																																																																																																																																																																																																																		
H	(E) EA EB EL ELEC EMER ENCL ENTR EP EPT EQ EQUIP ETC EXT EXTR	EXISTING EACH EXPOSED BOLT ELEVATION ELECTRIC(AL) EMERGENCY ENCLOSED / ENCLOSURE ENTRANCE ELECTRIC PANEL BOARD EXTERIOR PAINT EQUAL EQUIPMENT ETCETERA EXTERIOR EXTRUDED	OFD OFOI  OH OPNG OSB	OVERFLOW DRAIN OWNER FURNISHED OWNER INSTALLED OPPOSITE HAND OPENING ORIENTED STRAND BOARD	P.L. PC PERF PL PLAS PLY PR PSI PT PTD PVDF	PROPERTY LINE PRECAST CONCRETE PERFORATED PLATE PLASTER PLYWOOD PAIR POUNDS PER SQUARE INCH POINT / PRESSURE TREATED PAINT / PAINTED POLYVINYLIDENE FLUORIDE	<b>CHAPTER 5 GENERAL BUILDING HEIGHTS AND AREAS</b> ALLOWABLE HEIGHT AND AREA BASED ON THE MOST RESTRICTIVE OCCUPANCY, GROUP R-2 PER CBC 508.3.2  ALLOWABLE HEIGHT (CBC TABLE 504.3) 60 FT  PROPOSED HEIGHT 19'-9"  ALLOWABLE STORIES (CBC TABLE 504.4) 3 STORIES  PROPOSED STORIES 1 STORY  ALLOWABLE AREA (CBC TABLE 506.2) 28,000 SF (S1 SPRINKLERED BLDG)  PROPOSED AREA 10,300 SF  <b>CHAPTER 6 TYPES OF CONSTRUCTION.</b>  TABLE 601 FIRE-RESISTANCE RATING REQUIREMENTS FOR BUILDING ELEMENTS (HOURS)  FOR CONSTRUCTION TYPE V-B <table><tr><th>BUILDING ELEMENT</th><th>FIRE RESISTIVE RATING REQUIREMENTS</th></tr><tr><td>PRIMARY STRUCTURAL FRAME</td><td>0</td></tr><tr><td>BEARING WALLS</td><td>0</td></tr><tr><td>EXTERIOR</td><td>0</td></tr><tr><td>INTERIOR</td><td>0</td></tr><tr><td>NON BEARING WALLS &amp; PARTITIONS</td><td>0</td></tr><tr><td>EXTERIOR - SEE TABLE 602</td><td>SEE BELOW</td></tr><tr><td>INTERIOR</td><td>0</td></tr><tr><td>FLOOR CONSTRUCTION</td><td>0</td></tr><tr><td>ROOF CONSTRUCTION</td><td>0</td></tr></table> FIRE-RESISTANCE RATING REQUIREMENTS FOR EXTERIOR WALLS PER CBC TABLE 602: <table><tr><th>EXTERIOR WALL</th><th>FIRE SEPARATION DISTANCE</th><th>RATING REQ. FOR GROUPS B, R, S-2, TYPE V-B</th></tr><tr><td>NORTH</td><td>X ≥ 30</td><td>0</td></tr><tr><td>EAST</td><td>X ≥ 30</td><td>0</td></tr><tr><td>SOUTH</td><td>X ≥ 30</td><td>0</td></tr><tr><td>WEST</td><td>X ≥ 30</td><td>0</td></tr></table> MAXIMUM DISTANCE OF TRAVEL TO FIRE EXTINGUISHER: 75 FT PER CBC 906.3.1  <b>CHAPTER 7 FIRE AND SMOKE PROTECTION FEATURES</b>  707 FIRE BARRIERS 707.3.9 SEPERATED OCCUPANCIES. WHERE THE PROVISIONS OF SECTION 508.4 ARE APPLICABLE, THE FIRE BARRIER SEPERATING MIXED OCCUPANCIES SHALL HAVE A FIRE-RESISTANCE RATING OFNOT LESS THAN THAT INDICATED IN TABLE 508.4 BASED ON THE OCCUPANCIES BEING SEPERATED.  SECTION 711 HORIZONTAL ASSEMBLIES 711.2.4.1 SEPERATING MIXED OCCUPANCIES. WHERE THE HORIZONTAL ASSEMBLY SEPERATES MIXED OCCUPANCIES, THE ASSEMBLY SHALL HAVE A FIRE-RESISTANCE RATING OF NOT LESS THAN THAT REQUIRED BY SECTION 508.4 BASED ON THE OCCUPANCIES BEING SEPERATED.  <b>CHAPTER 9 FIRE PROTECTION SYSTEMS</b> 903.2.8 GROUP R-2. AN AUTOMATED SPRINKLER SYSTEM INSTALLED IN ACCORDANCE WITH SECTION 903.3 SHALL BE PROVIDED THROUGHOUT ALL THE BUILDING WITH A GROUP R FIRE AREA.  903.3.1.2 NFPA 13 SPRINKLER SYSTEM. AUTOMATIC SPRINKLER SYSTEMS IN GROUP R-2 OCCUPANCIES UP TO AND INCLUDING FOUR STORIES IN HEIGHT SHALL BE PERMITTED TO BE INSTALLED THROUGHT IN ACCORDANCE WITH NFPA.  TRAVEL DISTANCE TO A FIRE EXTINGUESHER: 75 FEET MAX										BUILDING ELEMENT	FIRE RESISTIVE RATING REQUIREMENTS	PRIMARY STRUCTURAL FRAME	0	BEARING WALLS	0	EXTERIOR	0	INTERIOR	0	NON BEARING WALLS & PARTITIONS	0	EXTERIOR - SEE TABLE 602	SEE BELOW	INTERIOR	0	FLOOR CONSTRUCTION	0	ROOF CONSTRUCTION	0	EXTERIOR WALL	FIRE SEPARATION DISTANCE	RATING REQ. FOR GROUPS B, R, S-2, TYPE V-B	NORTH	X ≥ 30	0	EAST	X ≥ 30	0	SOUTH	X ≥ 30	0	WEST	X ≥ 30	0	H																																																																																																																																																																																																																																																																																																																																																																																																																																																																																																																																																																																																																																	
BUILDING ELEMENT	FIRE RESISTIVE RATING REQUIREMENTS																																																																																																																																																																																																																																																																																																																																																																																																																																																																																																																																																																																																																																																																																				
PRIMARY STRUCTURAL FRAME	0																																																																																																																																																																																																																																																																																																																																																																																																																																																																																																																																																																																																																																																																																				
BEARING WALLS	0																																																																																																																																																																																																																																																																																																																																																																																																																																																																																																																																																																																																																																																																																				
EXTERIOR	0																																																																																																																																																																																																																																																																																																																																																																																																																																																																																																																																																																																																																																																																																				
INTERIOR	0																																																																																																																																																																																																																																																																																																																																																																																																																																																																																																																																																																																																																																																																																				
NON BEARING WALLS & PARTITIONS	0																																																																																																																																																																																																																																																																																																																																																																																																																																																																																																																																																																																																																																																																																				
EXTERIOR - SEE TABLE 602	SEE BELOW																																																																																																																																																																																																																																																																																																																																																																																																																																																																																																																																																																																																																																																																																				
INTERIOR	0																																																																																																																																																																																																																																																																																																																																																																																																																																																																																																																																																																																																																																																																																				
FLOOR CONSTRUCTION	0																																																																																																																																																																																																																																																																																																																																																																																																																																																																																																																																																																																																																																																																																				
ROOF CONSTRUCTION	0																																																																																																																																																																																																																																																																																																																																																																																																																																																																																																																																																																																																																																																																																				
EXTERIOR WALL	FIRE SEPARATION DISTANCE	RATING REQ. FOR GROUPS B, R, S-2, TYPE V-B																																																																																																																																																																																																																																																																																																																																																																																																																																																																																																																																																																																																																																																																																			
NORTH	X ≥ 30	0																																																																																																																																																																																																																																																																																																																																																																																																																																																																																																																																																																																																																																																																																			
EAST	X ≥ 30	0																																																																																																																																																																																																																																																																																																																																																																																																																																																																																																																																																																																																																																																																																			
SOUTH	X ≥ 30	0																																																																																																																																																																																																																																																																																																																																																																																																																																																																																																																																																																																																																																																																																			
WEST	X ≥ 30	0																																																																																																																																																																																																																																																																																																																																																																																																																																																																																																																																																																																																																																																																																			
G	F/F FA FAB FAP FB FD FE FF FIC REF FIN FIO FIXT FL FLASH FLR FLUOR FO FOB FOC FOF FOIC	FACE TO FACE FIRE ALARM FABRICATE FIRE ALARM PANEL FLAT BAR FLOOR DRAIN FIRE EXTINGUISHER FINISH FLOOR FURNISHED & INSTALLED BY CONTRACTOR FINISHED) FURNISHED & INSTALLED BY OWNER FIXTURE FLOOR LINE FLASHING FLOOR FLUORESCENT FACE OF FACE OF BUILDING FACE OF CONCRETE FACE OF FINISH FURNISHED BY OWNER INSTALLED BY CONTRACTOR	R&S RAD RB RCP RDWD REF REQ'D REV RM RO RWL	ROD & SHELF RADIUS RUBBER BASE / RESILIENT BASE REFLECTED CEILING PLAN REDWOOD REFERENCE REQUIRED REVISION ROOM ROUGH OPENING RAIN WATER LEADER	SAD SASM SCD SCHED SCW SED SF, SQ FT SHT SIM SLD SMD SMS SPD SPEC SPKR SQ SS SS STC STD	SEE ARCHITECTURAL DRAWINGS SELF ADHERING SHEET MEMBRANE SEE CIVIL DRAWINGS SCHEDULE SOLID CORE WOOD SEE ELECTRICAL DRAWINGS SQUARE FEET SHEET SIMILAR SEE LANDSCAPE DRAWINGS SEE MECHANICAL DRAWINGS SHEET METAL SCREW SEE PLUMBING DRAWINGS SPECIFICATION SPEAKER SQUARE SEE STRUCTURAL DRAWINGS STAINLESS STEEL SOUND TRANSMISSION CLASS STANDARD & SEE TELECOM DRAWINGS STEEL STORAGE STRUCTURE / STRUCTURAL SELF-TAPPING SCREW SURROUND SUSPENDED	<p>NOTE: If this drawing is not 34"x22" it has been revised from its original size and the scales noted on drawing/details are no longer applicable.</p> <p>© 2018 Shah Kawasaki Architects</p> <table><tr><th>NO.</th><th>DATE</th><th>ISSUE DESCRIPTION</th></tr><tr><td></td><td>04/08/2019</td><td>SCHEMATIC DESIGN</td></tr><tr><td></td><td></td><td></td></tr><tr><td></td><td></td><td></td></tr><tr><td></td><td></td><td></td></tr><tr><td></td><td></td><td></td></tr><tr><td></td><td></td><td></td></tr><tr><td></td><td></td><td></td></tr><tr><td></td><td></td><td></td></tr><tr><td></td><td></td><td></td></tr><tr><td></td><td></td><td></td></tr><tr><td></td><td></td><td></td></tr><tr><td></td><td></td><td></td></tr><tr><td></td><td></td><td></td></tr><tr><td></td><td></td><td></td></tr><tr><td></td><td></td><td></td></tr><tr><td></td><td></td><td></td></tr><tr><td></td><td></td><td></td></tr><tr><td></td><td></td><td></td></tr><tr><td></td><td></td><td></td></tr><tr><td></td><td></td><td></td></tr><tr><td></td><td></td><td></td></tr><tr><td></td><td></td><td></td></tr><tr><td></td><td></td><td></td></tr><tr><td></td><td></td><td></td></tr><tr><td></td><td></td><td></td></tr><tr><td></td><td></td><td></td></tr><tr><td></td><td></td><td></td></tr><tr><td></td><td></td><td></td></tr><tr><td></td><td></td><td></td></tr><tr><td></td><td></td><td></td></tr><tr><td></td><td></td><td></td></tr><tr><td></td><td></td><td></td></tr><tr><td></td><td></td><td></td></tr><tr><td></td><td></td><td></td></tr><tr><td></td><td></td><td></td></tr><tr><td></td><td></td><td></td></tr><tr><td></td><td></td><td></td></tr><tr><td></td><td></td><td></td></tr><tr><td></td><td></td><td></td></tr><tr><td></td><td></td><td></td></tr><tr><td></td><td></td><td></td></tr><tr><td></td><td></td><td></td></tr><tr><td></td><td></td><td></td></tr><tr><td></td><td></td><td></td></tr><tr><td></td><td></td><td></td></tr><tr><td></td><td></td><td></td></tr><tr><td></td><td></td><td></td></tr><tr><td></td><td></td><td></td></tr><tr><td></td><td></td><td></td></tr><tr><td></td><td></td><td></td></tr><tr><td></td><td></td><td></td></tr><tr><td></td><td></td><td></td></tr><tr><td></td><td></td><td></td></tr><tr><td></td><td></td><td></td></tr><tr><td></td><td></td><td></td></tr><tr><td></td><td></td><td></td></tr><tr><td></td><td></td><td></td></tr><tr><td></td><td></td><td></td></tr><tr><td></td><td></td><td></td></tr><tr><td></td><td></td><td></td></tr><tr><td></td><td></td><td></td></tr><tr><td></td><td></td><td></td></tr><tr><td></td><td></td><td></td></tr><tr><td></td><td></td><td></td></tr><tr><td></td><td></td><td></td></tr><tr><td></td><td></td><td></td></tr><tr><td></td><td></td><td></td></tr><tr><td></td><td></td><td></td></tr><tr><td></td><td></td><td></td></tr><tr><td></td><td></td><td></td></tr><tr><td></td><td></td><td></td></tr><tr><td></td><td></td><td></td></tr><tr><td></td><td></td><td></td></tr><tr><td></td><td></td><td></td></tr><tr><td></td><td></td><td></td></tr><tr><td></td><td></td><td></td></tr><tr><td></td><td></td><td></td></tr><tr><td></td><td></td><td></td></tr><tr><td></td><td></td><td></td></tr><tr><td></td><td></td><td></td></tr><tr><td></td><td></td><td></td></tr><tr><td></td><td></td><td></td></tr><tr><td></td><td></td><td></td></tr><tr><td></td><td></td><td></td></tr><tr><td></td><td></td><td></td></tr><tr><td></td><td></td><td></td></tr><tr><td></td><td></td><td></td></tr><tr><td></td><td></td><td></td></tr><tr><td></td><td></td><td></td></tr><tr><td></td><td></td><td></td></tr><tr><td></td><td></td><td></td></tr><tr><td></td><td></td><td></td></tr><tr><td></td><td></td><td></td></tr><tr><td></td><td></td><td></td></tr><tr><td></td><td></td><td></td></tr><tr><td></td><td></td><td></td></tr><tr><td></td><td></td><td></td></tr><tr><td></td><td></td><td></td></tr><tr><td></td><td></td><td></td></tr><tr><td></td><td></td><td></td></tr><tr><td></td><td></td><td></td></tr><tr><td></td><td></td><td></td></tr><tr><td></td><td></td><td></td></tr><tr><td></td><td></td><td></td></tr><tr><td></td><td></td><td></td></tr><tr><td></td><td></td><td></td></tr><tr><td></td><td></td><td></td></tr><tr><td></td><td></td><td></td></tr><tr><td></td><td></td><td></td></tr><tr><td></td><td></td><td></td></tr><tr><td></td><td></td><td></td></tr><tr><td></td><td></td><td></td></tr><tr><td></td><td></td><td></td></tr><tr><td></td><td></td><td></td></tr><tr><td></td><td></td><td></td></tr><tr><td></td><td></td><td></td></tr><tr><td></td><td></td><td></td></tr><tr><td></td><td></td><td></td></tr><tr><td></td><td></td><td></td></tr><tr><td></td><td></td><td></td></tr><tr><td></td><td></td><td></td></tr><tr><td></td><td></td><td></td></tr><tr><td></td><td></td><td></td></tr><tr><td></td><td></td><td></td></tr><tr><td></td><td></td><td></td></tr><tr><td></td><td></td><td></td></tr><tr><td></td><td></td><td></td></tr><tr><td></td><td></td><td></td></tr><tr><td></td><td></td><td></td></tr><tr><td></td><td></td><td></td></tr><tr><td></td><td></td><td></td></tr><tr><td></td><td></td><td></td></tr><tr><td></td><td></td><td></td></tr><tr><td></td><td></td><td></td></tr><tr><td></td><td></td><td></td></tr><tr><td></td><td></td><td></td></tr><tr><td></td><td></td><td></td></tr><tr><td></td><td></td><td></td></tr><tr><td></td><td></td><td></td></tr><tr><td></td><td></td><td></td></tr><tr><td></td><td></td><td></td></tr><tr><td></td><td></td><td></td></tr><tr><td></td><td></td><td></td></tr><tr><td></td><td></td><td></td></tr><tr><td></td><td></td><td></td></tr><tr><td></td><td></td><td></td></tr><tr><td></td><td></td><td></td></tr><tr><td></td><td></td><td></td></tr><tr><td></td><td></td><td></td></tr><tr><td></td><td></td><td></td></tr><tr><td></td><td></td><td></td></tr><tr><td></td><td></td><td></td></tr><tr><td></td><td></td><td></td></tr><tr><td></td><td></td><td></td></tr><tr><td></td><td></td><td></td></tr><tr><td></td><td></td><td></td></tr><tr><td></td><td></td><td></td></tr><tr><td></td><td></td><td></td></tr><tr><td></td><td></td><td></td></tr><tr><td></td><td></td><td></td></tr><tr><td></td><td></td><td></td></tr><tr><td></td><td></td><td></td></tr><tr><td></td><td></td><td></td></tr><tr><td></td><td></td><td></td></tr><tr><td></td><td></td><td></td></tr><tr><td></td><td></td><td></td></tr><tr><td></td><td></td><td></td></tr><tr><td></td><td></td><td></td></tr><tr><td></td><td></td><td></td></tr><tr><td></td><td></td><td></td></tr><tr><td></td><td></td><td></td></tr><tr><td></td><td></td><td></td></tr><tr><td></td><td></td><td></td></tr><tr><td></td><td></td><td></td></tr><tr><td></td><td></td><td></td></tr><tr><td></td><td></td><td></td></tr><tr><td></td><td></td><td></td></tr><tr><td></td><td></td><td></td></tr><tr><td></td><td></td><td></td></tr><tr><td></td><td></td><td></td></tr><tr><td></td><td></td><td></td></tr><tr><td></td><td></td><td></td></tr><tr><td></td><td></td><td></td></tr><tr><td></td><td></td><td></td></tr><tr><td></td><td></td><td></td></tr><tr><td></td><td></td><td></td></tr><tr><td></td><td></td><td></td></tr><tr><td></td><td></td><td></td></tr><tr><td></td><td></td><td></td></tr><tr><td></td><td></td><td></td></tr><tr><td></td><td></td><td></td></tr><tr><td></td><td></td><td></td></tr><tr><td></td><td></td><td></td></tr><tr><td></td><td></td><td></td></tr><tr><td></td><td></td><td></td></tr><tr><td></td><td></td><td></td></tr><tr><td></td><td></td><td></td></tr><tr><td></td><td></td><td></td></tr><tr><td></td><td></td><td></td></tr><tr><td></td><td></td><td></td></tr><tr><td></td><td></td><td></td></tr><tr><td></td><td></td><td></td></tr><tr><td></td><td></td><td></td></tr><tr><td></td><td></td><td></td></tr><tr><td></td><td></td><td></td></tr><tr><td></td><td></td><td></td></tr><tr><td></td><td></td><td></td></tr><tr><td></td><td></td><td></td></tr><tr><td></td><td></td><td></td></tr><tr><td></td><td></td><td></td></tr><tr><td></td><td></td><td></td></tr><tr><td></td><td></td><td></td></tr><tr><td></td><td></td><td></td></tr><tr><td></td><td></td><td></td></tr></table>										NO.	DATE	ISSUE DESCRIPTION		04/08/2019	SCHEMATIC DESIGN																																																																																																																																																																																																																																																																																																																																																																																																																																																																																																																																																																																																																																																															
NO.	DATE	ISSUE DESCRIPTION																																																																																																																																																																																																																																																																																																																																																																																																																																																																																																																																																																																																																																																																																			
	04/08/2019	SCHEMATIC DESIGN																																																																																																																																																																																																																																																																																																																																																																																																																																																																																																																																																																																																																																																																																			



NOTE: If this drawing is not 34"x22" it has been revised from its original size and the scales noted on drawing/details are no longer applicable.  
© 2018 Shah Kawasaki Architects

NO.	DATE	ISSUE DESCRIPTION
	04/08/2019	SCHEMATIC DESIGN

**CITY OF MILPITAS FIRE STATION NO. 2 REPLACEMENT**  
1263 YOSEMITE DR. MILPITAS, CA 95035

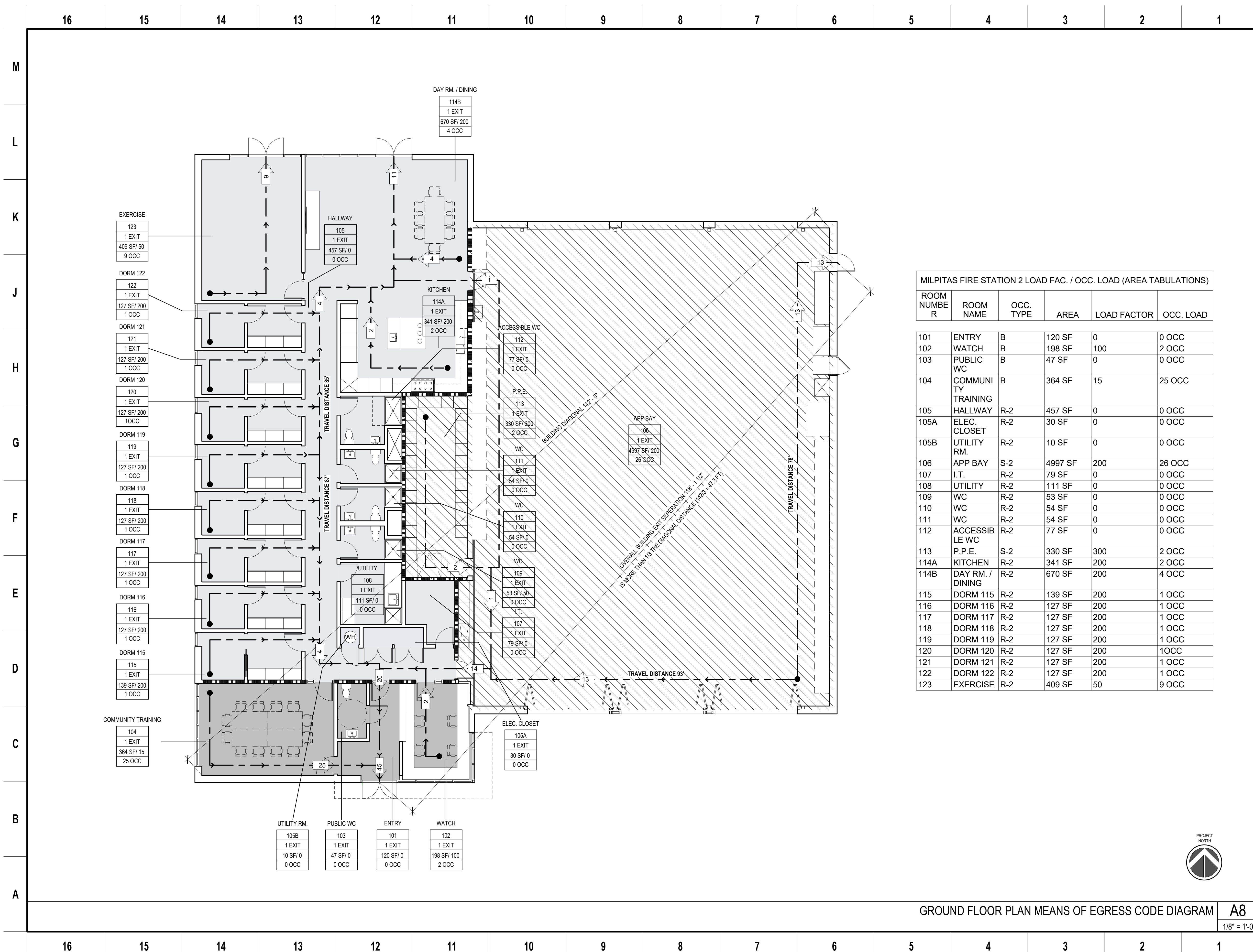
Architect of Record <b>SHAH KAWASAKI ARCHITECTS</b> 570 10th Street, Suite 201 Oakland, CA 94607	Consultant
---	------------

Drawing Title <b>ABBREVIATIONS &amp; CODE SUMMARY</b>
--

Drawing No. <b>A-002</b>
SKA Project Number: 18725.00

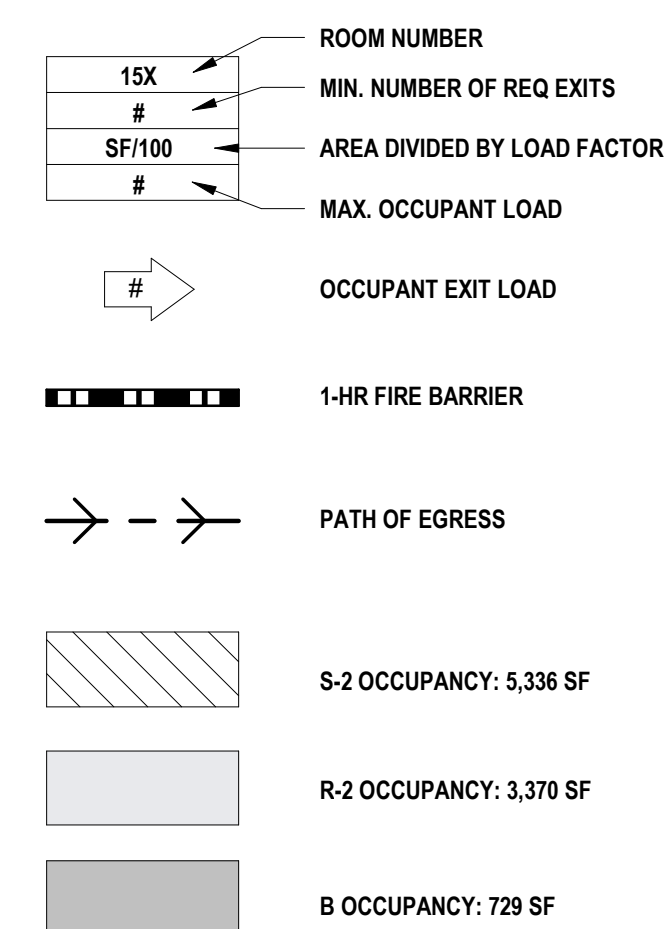
NOT FOR CONSTRUCTION





#### SHEET NOTES

### KEY LEGEND



NOTE: If this drawing is not 34"x22" it has been revised from its original size and the scales noted on drawing/details are no longer applicable.

© 2018 Shah Kawasaki Architects

[illegible]

**CITY OF MILPITAS FIRE STATION NO. 2  
REPLACEMENT**

1263 YOSEMITE DR. MILPITAS, CA 95035

Architect of Record  
S H A H  
KAWASAKI  
ARCHITECTS  
570 10th Street, Suite 201

Consultan

Drawing Title	<b>CODE DIAGRAM / MEANS OF EGRESS</b>
---------------	---------------------------------------

Drawing No.

A-003

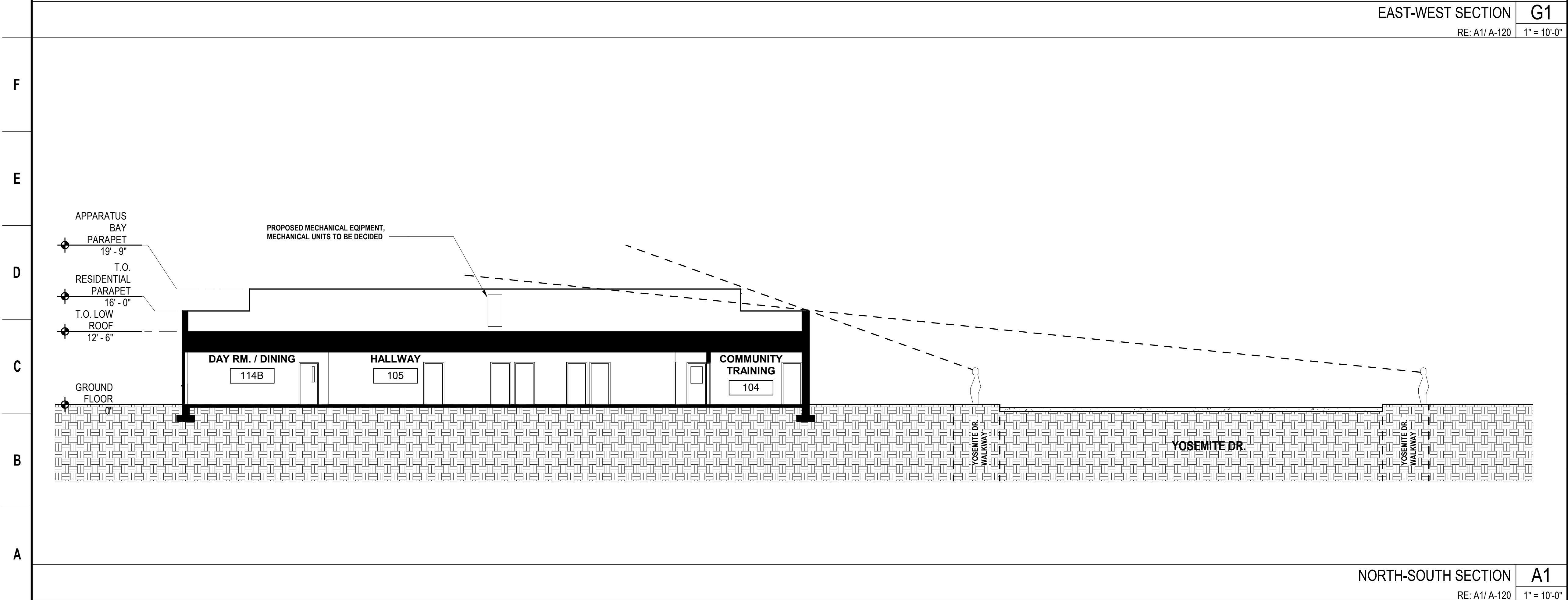
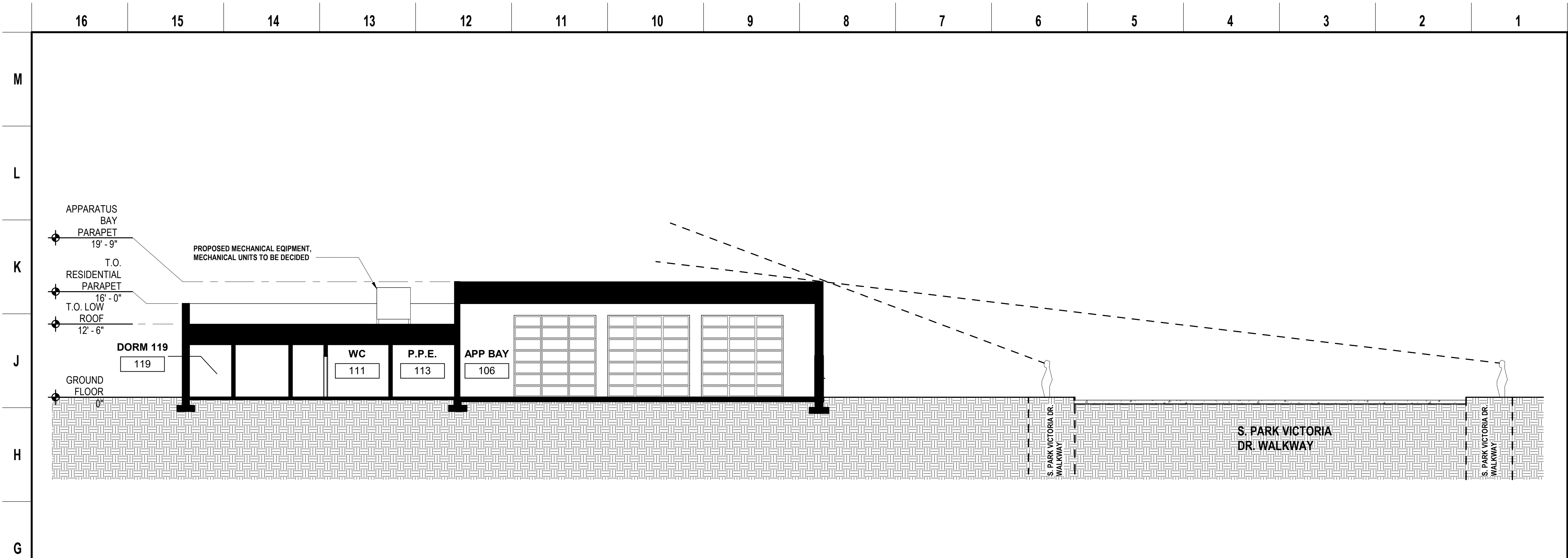
SKA Project Number: 18725.00

GROUND FLOOR PLAN MEANS OF EGRESS CODE DIAGRAM	A8
--	----

A8	
----	--

1/8" = 1'-0"
--------------

**NOT FOR CONSTRUCTION**



NOTE: If this drawing is not 34"x22" it has been revised from its original size and the scales noted on drawing/details are no longer applicable.  
© 2018 Shah Kawasaki Architects

NO.	DATE	ISSUE DESCRIPTION
	04/08/2019	SCHEMATIC DESIGN

**CITY OF MILPITAS FIRE STATION NO. 2 REPLACEMENT**  
1263 YOSEMITE DR. MILPITAS, CA 95035

Architect of Record  
**SHAH KAWASAKI**  
ARCHITECTS  
570 10th Street, Suite 201  
Oakland, CA 94607

Consultant

Drawing Title  
**SIGHTLINE AND BUILDING SECTIONS DIAGRAMS**

Drawing No.

**A-004**

SKA Project Number: 18725.00

**NOT FOR CONSTRUCTION**





NOTE: If this drawing is not 34"x22" it has been revised from its original size and the scales noted on drawing/details are no longer applicable.  
© 2018 Shah Kawasaki Architects

NO.	DATE	ISSUE DESCRIPTION
	04/08/2019	SCHEMATIC DESIGN

**CITY OF MILPITAS FIRE STATION NO. 2 REPLACEMENT**  
1263 YOSEMITE DR. MILPITAS, CA 95035

Architect of Record  
**SHAH KAWASAKI ARCHITECTS**  
570 10th Street, Suite 201  
Oakland, CA 94607

Consultant

Drawing Title  
**SITE PLAN VICINITY PLAN**

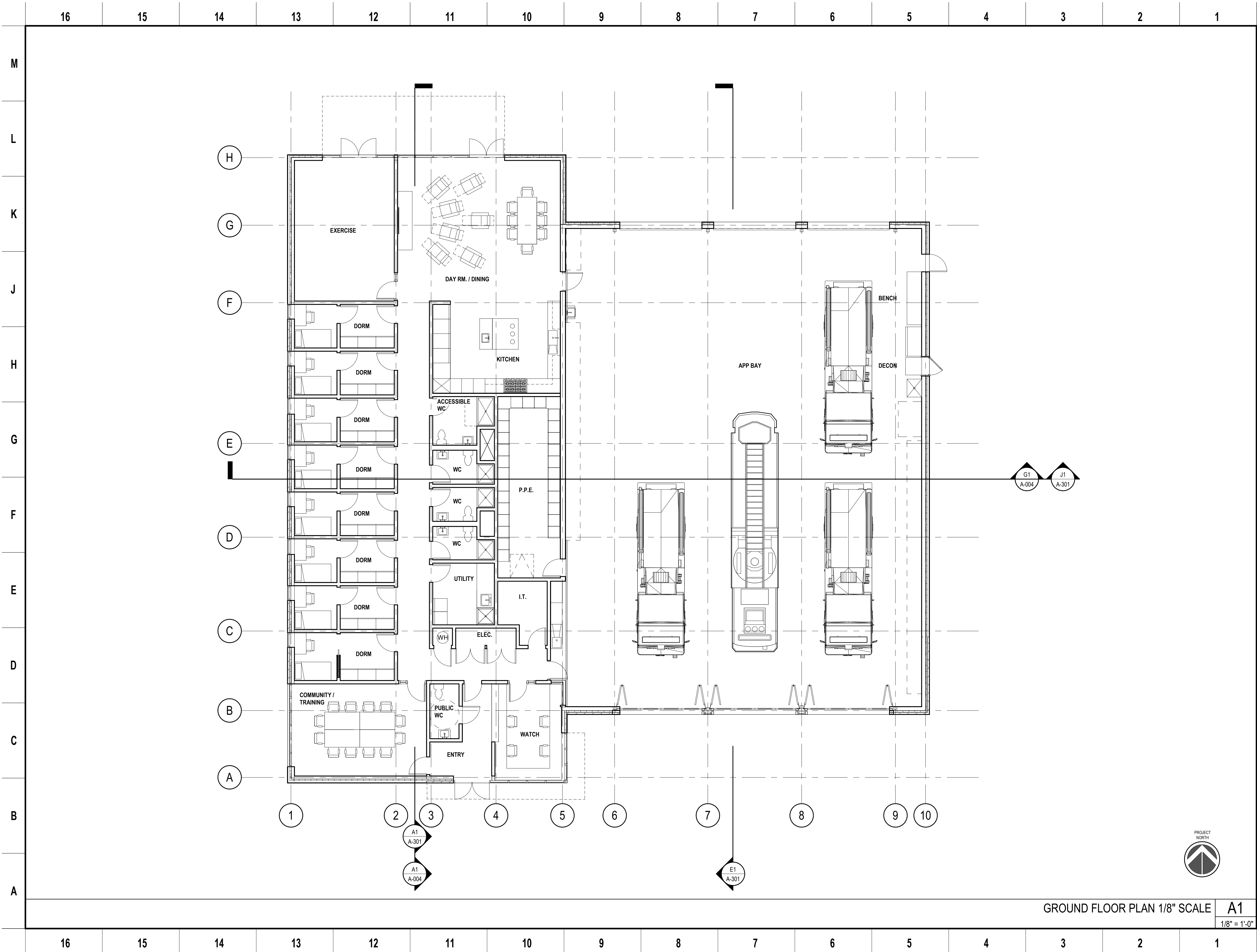
Drawing No.

**A-101**

SKA Project Number: 18725.00

**NOT FOR CONSTRUCTION**





NOTE: If this drawing is not 34"x22" it has been revised from its original size and the scales noted on drawing/details are no longer applicable.  
© 2018 Shah Kawasaki Architects

NO.	DATE	ISSUE DESCRIPTION
	04/08/2019	SCHEMATIC DESIGN

CITY OF MILPITAS FIRE STATION NO. 2  
REPLACEMENT  
1263 YOSEMITE DR. MILPITAS, CA 95035

Architect of Record  
SHAH  
KAWASAKI  
ARCHITECTS  
570 10th Street, Suite 201  
Oakland, CA 94607

Consultant

FLOOR PLAN

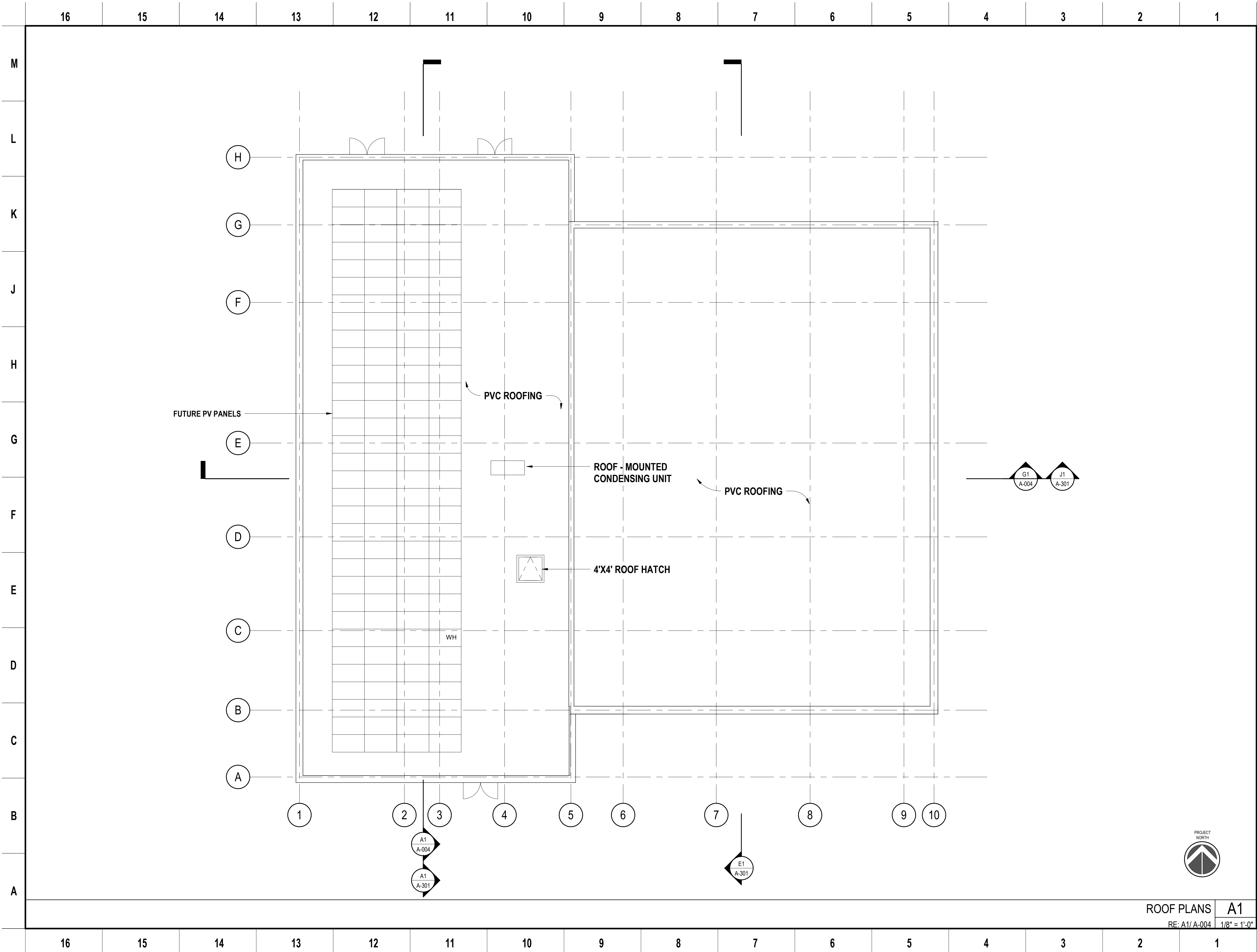
Drawing No.

A-120

SKA Project Number: 18725.00

GROUND FLOOR PLAN 1/8" SCALE  
A1  
1/8" = 1'-0"

NOT FOR CONSTRUCTION



NOTE: If this drawing is not 34"x22" it has been revised from its original size and the scales noted on drawing/details are no longer applicable.  
© 2018 Shah Kawasaki Architects

NO.	DATE	ISSUE DESCRIPTION
	04/08/2019	SCHEMATIC DESIGN

CITY OF MILPITAS FIRE STATION NO. 2  
REPLACEMENT  
1263 YOSEMITE DR. MILPITAS, CA 95035

Architect of Record  
SHAH  
KAWASAKI  
ARCHITECTS  
570 10th Street, Suite 201  
Oakland, CA 94607

Consultant

Drawing Title  
ROOF PLAN

Drawing No.

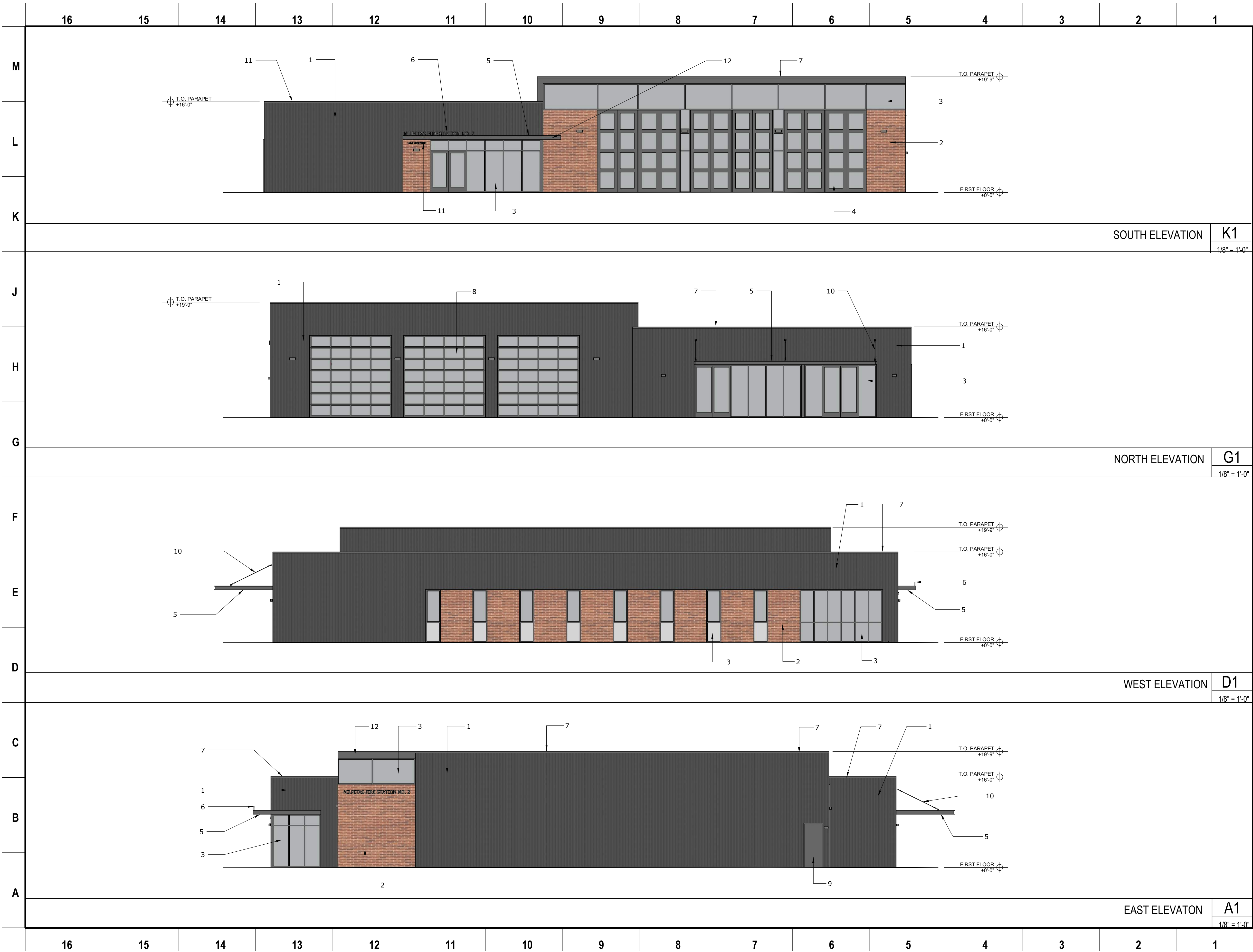
A-121

SKA Project Number: 18725.00

ROOF PLANS  
RE: A1/ A-004  
1/8" = 1'-0"

A1

NOT FOR CONSTRUCTION



SHEET NOTES

1

VERTICAL CORRUGATED METAL PANEL

2

BRICK

3

ALUMINUM STOREFRONT SYSTEM

4

4-FOLD STEEL AND GLAZED DOOR

5

STEEL CANOPY

6

PAINTED METAL COPING

7

ALUMINUM ROLL-UP SECTIONAL DOOR

8

PAINTED HOLLOW METAL DOOR

9

STAINLESS STEEL ROD

10

STAINLESS STEEL ADDRESS SIGN

11

PAINTED METAL FASCIA

12

NOTE: If this drawing is not 34"x22" it has been revised from its original size and the scales noted on drawing/details are no longer applicable.

© 2018 Shah Kawasaki Architects

NO.	DATE	ISSUE DESCRIPTION
	04/08/2019	SCHEMATIC DESIGN

CITY OF MILPITAS FIRE STATION 2

1263 YOSEMITE DR., MILPITAS, CA 95035

Architect of Record

SHAH KAWASAKI ARCHITECTS

570 10th Street, Suite 201  
Oakland, CA 94607

Consultant

Drawing Title

Exterior Elevations

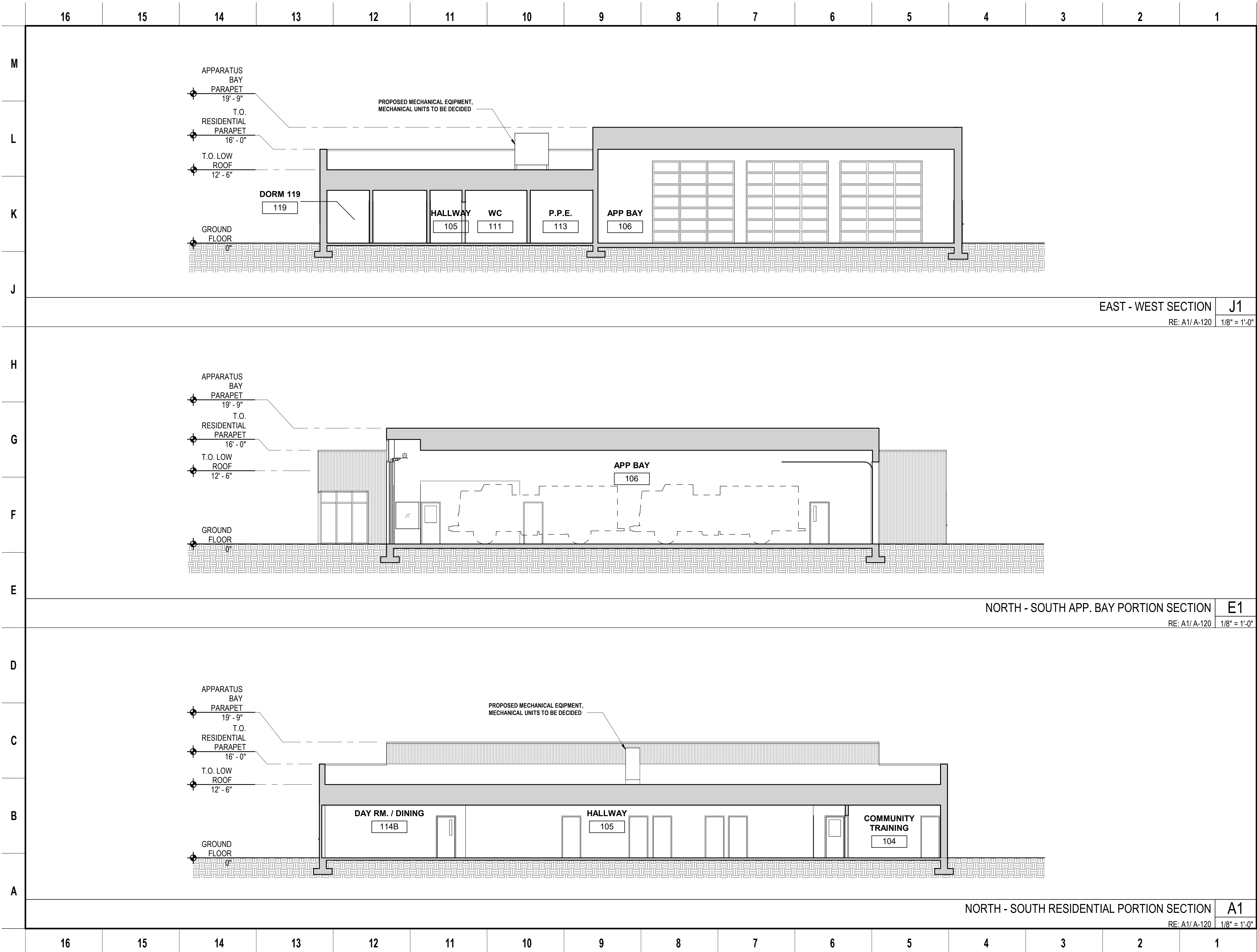
Drawing No.

A-201

SKA Project Number: 18725.00

NOT FOR CONSTRUCTION





NOTE: If this drawing is not 34"x22" it has been revised from its original size and the scales noted on drawing/details are no longer applicable.  
© 2018 Shah Kawasaki Architects

NO.	DATE	ISSUE DESCRIPTION
	04/08/2019	SCHEMATIC DESIGN

CITY OF MILPITAS FIRE STATION NO. 2 REPLACEMENT  
1263 YOSEMITE DR. MILPITAS, CA 95035

Architect of Record  
SHAH  
KAWASAKI  
ARCHITECTS  
570 10th Street, Suite 201  
Oakland, CA 94607

Consultant

Drawing Title  
BUILDING SECTIONS

Drawing No.

A-301

SKA Project Number: 18725.00

NOT FOR CONSTRUCTION



16151413121110987654321

M

L

K

J

H

G



SOUTH-WEST CORNER RENDER

87654321

M

L

K

J

H

G



SOUTH-EAST CORNER RENDER

16151413121110987654321

F

E

D

C

B

A



NORTH-WEST CORNER RENDER

87654321

F

E

D

C

B

A



NORTH-EAST CORNER RENDER



NOTE: If this drawing is not 34"x22" it has been revised from its original size and the scales noted on drawing/details are no longer applicable.  
© 2018 Shah Kawasaki Architects

NO.	DATE	ISSUE DESCRIPTION
	04/08/2019	SCHEMATIC DESIGN

CITY OF MILPITAS FIRE STATION NO. 2 REPLACEMENT

1263 YOSEMITE DR. MILPITAS, CA 95035

Architect of Record

SHAH KAWASAKI ARCHITECTS

570 10th Street, Suite 201

Oakland, CA 94607

Consultant

Drawing Title

RENDERED PRESPECTIVES

Drawing No.

A-401

SKA Project Number: 18725.00

NOT FOR CONSTRUCTION