

Natrona County Property & Ownership Data

Private Member
Private Organization

Summary

Natrona County Property and Ownership Land Record Information

[View Full Details](#)

Details

Application
Web Mapping Application

April 15, 2024
Date Updated

October 20, 2017
Published Date

Public
Anyone can see this content

Custom License
[View license details](#)

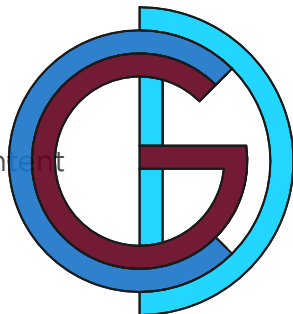
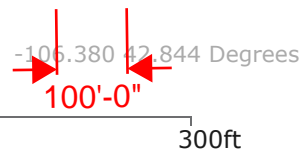
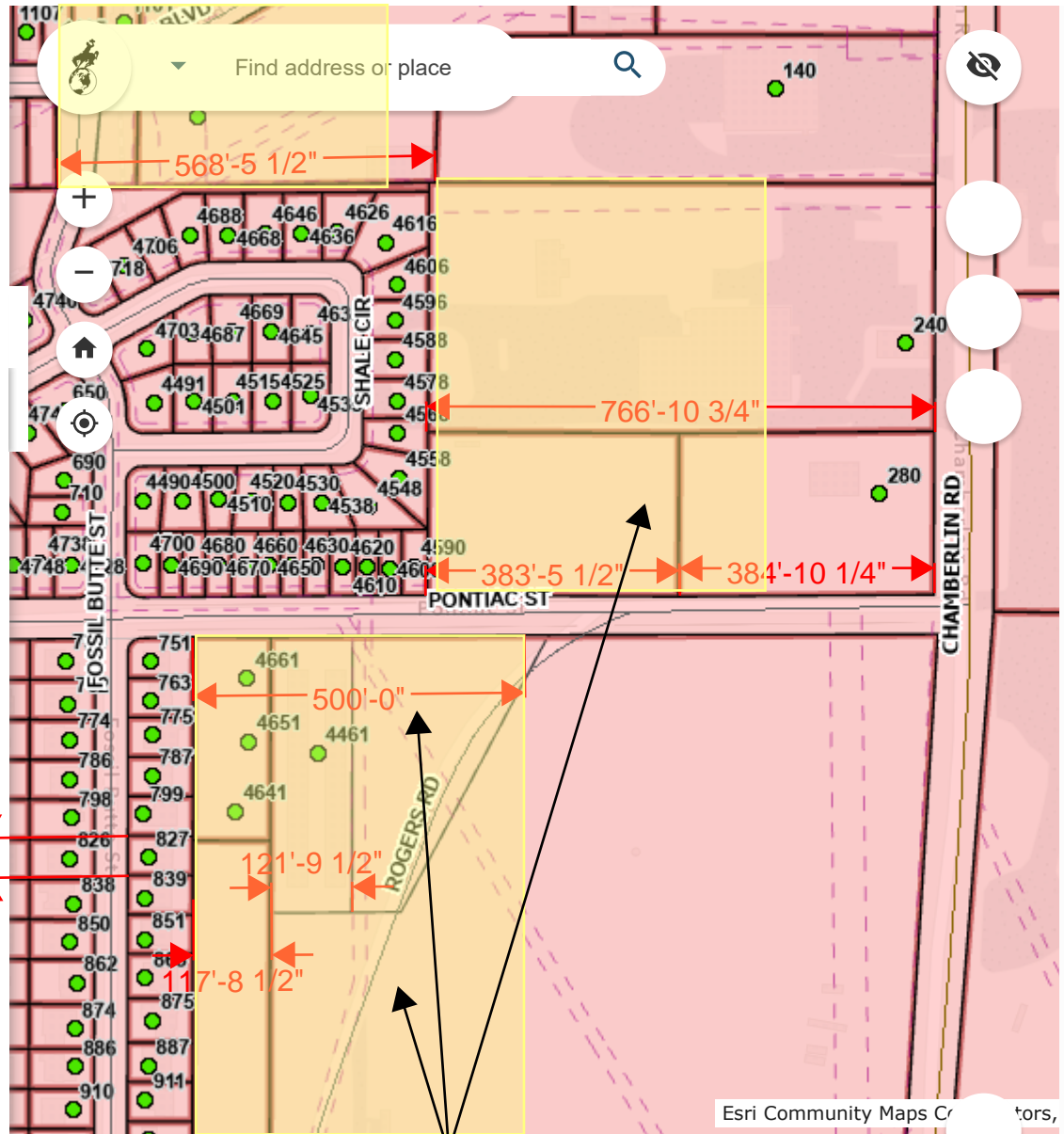


Exhibit showing 500'-0" distance from residential lots from Fossil Butte Street & Buffalo Run Subdivision



Yellow highlighted boxes show width of 500'-0" horizontal distance from residential property lines