



Miles City Office
 PO Box 1298
 Miles City, Montana 59301
 Phone: (406) 234-5565
 Fax: (406) 234-5566

Project: 02202405 - Miles City Fire & Ambulance
 2800 Main Street
 Miles City, Montana 59301
 Phone: 509-993-4010

Prime Contract Change Order #010: Change Order 10

TO:	City of Miles City PO Box 910 Miles City, Montana 59301	FROM:	Jackson Contractor Group, Inc. PO Box 967 Missoula Montana 59806
DATE CREATED:	4/ 08 /2026	CREATED BY:	Amy Lesh (Jackson Contractor Group, Inc.)
CONTRACT STATUS:	Pending - In Review	REVISION:	0
DESIGNATED REVIEWER:	Amy Lesh (Jackson Contractor Group, Inc.)	REVIEWED BY:	
DUE DATE:	04/15 /2026	REVIEW DATE:	
INVOICED DATE:		PAID DATE:	
SCHEDULE IMPACT:		EXECUTED:	No
CONTRACT FOR:	02202405-00:Miles City Fire and Rescue	TOTAL AMOUNT:	\$ 0.00

DESCRIPTION:
 This change order is for additional line striping, in the apparatus bays and the north parking lot.

ATTACHMENTS:

This proposal is based on the usual cost elements such as labor, material, and normal mark ups, and does not include any amount for changes in the sequence or work delays, disruption, rescheduling, extended overhead, acceleration and or impacts, and the right is expressly reserved to make claim for any and all of these related items of cost prior to any final settlement of the contract.

POTENTIAL CHANGE ORDERS IN THIS CHANGE ORDER:

PCO #	Title	Schedule Impact	Amount
025	Additional Line Striping		0.00
TOTAL:			\$0.00

CHANGE ORDER LINE ITEMS:

PCO # 025 : Additional Line Striping

#	SubJob	Cost Code	Description	Type	Amount
1	N/A	32-1416 - 2.32C JT COATINGS	Apparatus Bay and North Parking Striping	Subcontract	\$ 1,767.50
2	N/A	01-2116 - CONTINGENCY	Contingency	Unallocated	(\$1,767.50)
Subtotal:					\$0.00
			GL Insurance: 0.85% Applies to All Line Items		0.00
			Builders Risk Insurance: 0.50% Applies to All Line Items		0.00
			Procure: ≈ 0.19% Applies to All Line Items		0.00
			P&P Bond: 0.64% Applies to All Line Items		0.00
			Fee: 5.00% Applies to All Line Items		0.00
			MGRT: 1.00% Applies to All Line Items		0.00
Grand Total:					\$0.00

The original (Contract Sum)	\$ 4,753,879.00
Net change by previously authorized Change Orders	\$ 62,075.79
The contract sum prior to this Change Order was	\$ 4,815,954.79
The contract sum would be changed by this Change Order in the amount of	\$ 0.00
The new contract sum including this Change Order will be	\$ 4,815,954.79
The contract time will not be changed by this Change Order	



Terry Sukut (JGA Architects)
3395 Gabel Road, Suite 100
Billings Montana 59102

City of Miles City
PO Box 910
Miles City Montana 59301

Jackson Contractor Group, Inc.
PO Box 967
Missoula Montana 59806

SIGNATURE **DATE**

SIGNATURE **DATE**

SIGNATURE **DATE**

From: Jason Sorenson <jason@aaastripingusa.com>
Sent: Tuesday, April 7, 2026 11:55 AM
To: Amy Lesh
Subject: RE: Miles City Fire Station - Arch Site Striping revisions 04.07.26.pdf

I come up with 1010 LF * 1.75 a LF = \$1767.50

Im guessing it's the same trip?

If not, add the additional MOB of \$500

Thanks
Jason

From: Amy Lesh <amyl@jacksoncontractorgroup.com>
Sent: Tuesday, April 7, 2026 11:50 AM
To: Jason Sorenson <jason@aaastripingusa.com>
Subject: RE: Miles City Fire Station - Arch Site Striping revisions 04.07.26.pdf

Both, and the 6 lines to the north of the building.

Thanks,



AMY LESH
PROJECT MANAGER
amyl@jacksoncontractorgroup.com
www.jacksoncontractorgroup.com
PO Box 1298, Miles City, MT 59301
P | 406-234-5565 M | 406-853-1785

f @ in v

From: Jason Sorenson <jason@aaastripingusa.com>
Sent: Tuesday, April 7, 2026 11:48 AM
To: Amy Lesh <amyl@jacksoncontractorgroup.com>
Subject: RE: Miles City Fire Station - Arch Site Striping revisions 04.07.26.pdf

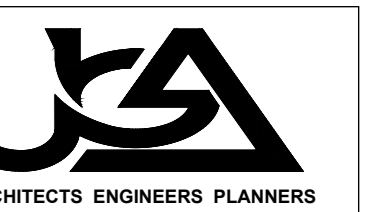
Amy,

Is it the lines outside on the gray or do you want the inside lines on the blue also?

Thanks
Jason



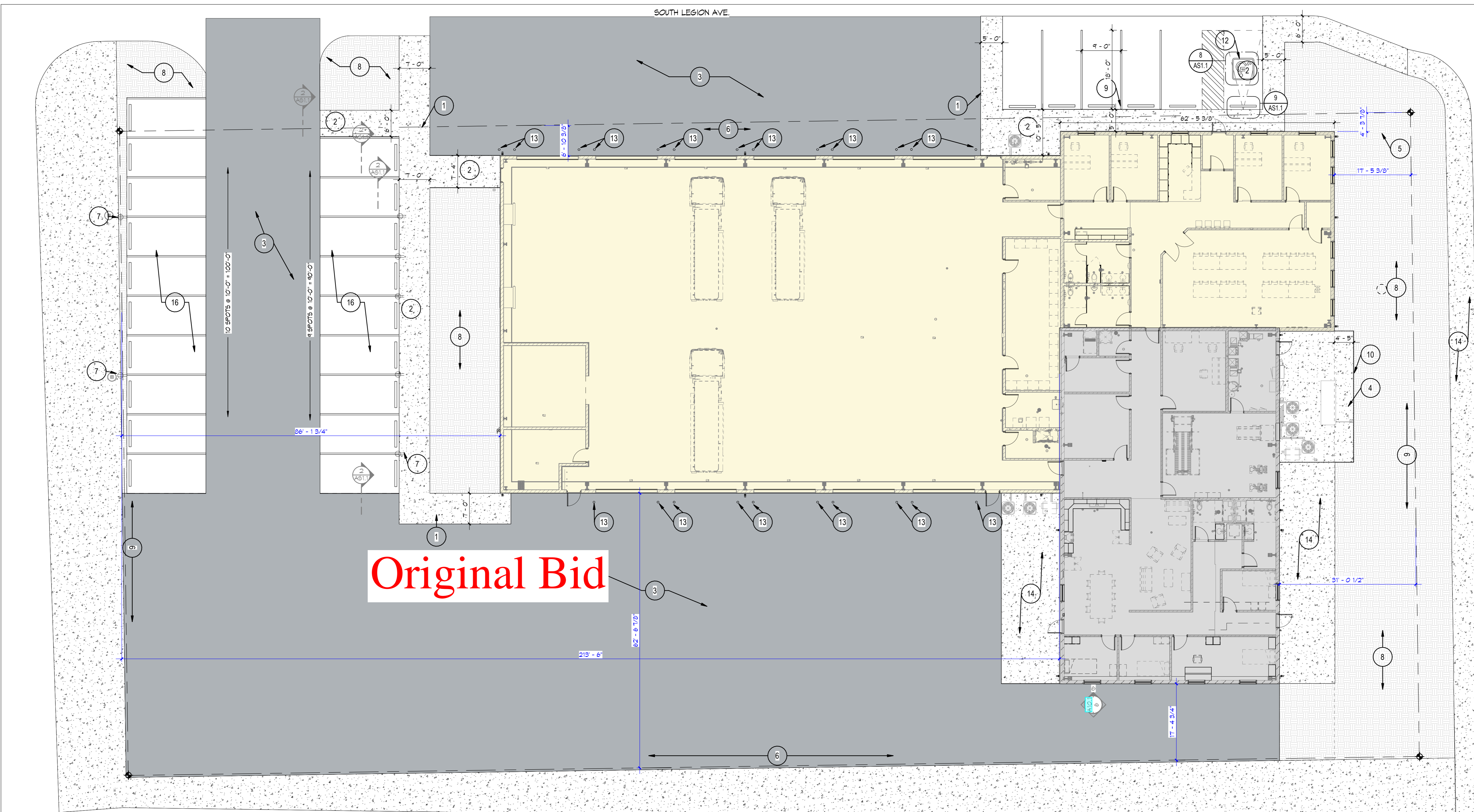
MILES CITY FIRE & AMBULANCE FACILITY RENOVATION & ADDITION PROJECT



The professional services of the architect are unreservedly and are performed in the interest of Miles City Fire & Ambulance Facility. No contractual obligation is assumed by the architect for the benefit of any other person involved in the contract.

project: 2404
date: 5/5/2025
revisions:

AS1.1



Original Bid

GENERAL NOTES

- SLOPE ALL SIDEWALKS, FILLS, AND PAVED AREAS AWAY FROM THE BUILDING. DO NOT EXCEED GROSS SLOPE OF 2% ON WALKS.
- ALL CURBS AND SIDEWALKS SHALL CONFORM TO LOCAL CODES AND ORDINANCES. VERIFY WITH THE CITY OF MILES CITY FOR STANDARDS.
- ALL SUB CONTRACTOR SUPPLIES SHALL VISIT THE SITE AND BECOME FAMILIAR WITH THE SCOPE OF WORK. CONTRACTOR SHALL VERIFY LOCATIONS OF ALL UNDERGROUND UTILITIES PRIOR TO INSTALLATION OF NEW IMPROVEMENTS.
- UNLESS OTHERWISE INDICATED, MEET EXISTING GRADES @ THE LIMIT OF DISTURBANCE.
- PROVIDE SLEEVES FOR IRRIGATION LINES TO ALL LANDSCAPE AREAS.
- DUST CONTROL MEASURES MUST BE IMPLEMENTED DURING CONSTRUCTION AS NECESSARY TO MINIMIZE BLOWING DUST.
- MEASURES MUST BE TAKEN DURING CONSTRUCTION ACTIVITIES TO MINIMIZE "TRACK OUT" (MUD, ROCKS, DEBRIS) FROM THE SITE ONTO THE PUBLIC STREETS.
- WHERE NEW CONC. ABUTS EXISTING, MATCH EXPANSION JOINT LOCATIONS, TYP.
- 6" COMPACTED BASE REQUIRED UNDER ALL NEW CONCRETE.
- MATCH ELEVATION OF ALL EXISTING CONCRETE SIDEWALKS WHERE MATCH UP CONCRETE IS BEING PLACED.

KEYED NOTES

- NEW CONCRETE CURB & GUTTER. - SEE CIVIL DRAWINGS
- NEW ASPHALT PAVING AS AN ALTERNATE - SEE CIVIL DRAWINGS
ALTERNATE C-1 CONCRETE PAVING
ALTERNATE C-2 ASPHALT PAVING
- NEW CONCRETE STOOP.
- NEW FLASHPOLE PROVIDED BY OWNER - SEE CIVIL DRAWINGS
- PROPERTY LINE
- SUBGRADE EXISTING SURFACE TO REMAIN - SEE CIVIL DRAWING
- PARKING BUMPER - SEE DETAIL - 3/AS1.1
- VINYL FENCE - SEE DETAIL - 1/AS1.1
- NOT USED
- ADA PARKING SYMBOL - SEE DETAIL - 8/AS1.1
- PIPE BOLLARD SEE DETAIL - 5/AS1.1
- EXISTING SIDEWALK TO REMAIN

CONCRETE JOINTS

- CONTRACTION JOINTS MAXIMUM 6'-0" O.C. - SEE 5/AS1.2 AND SPECIFICATION SECTION 03 30 00
- CONSTRUCTION JOINTS MAXIMUM 30'-0" O.C. - SEE 5/AS1.2 AND SPECIFICATION SECTION 03 30 00
- ISOLATION JOINTS WHERE CONC. PAVING ABUTS BUILDING OR SITE STRUCTURE - SEE 5/AS1.2 AND SPECIFICATION SECTION 03 30 00

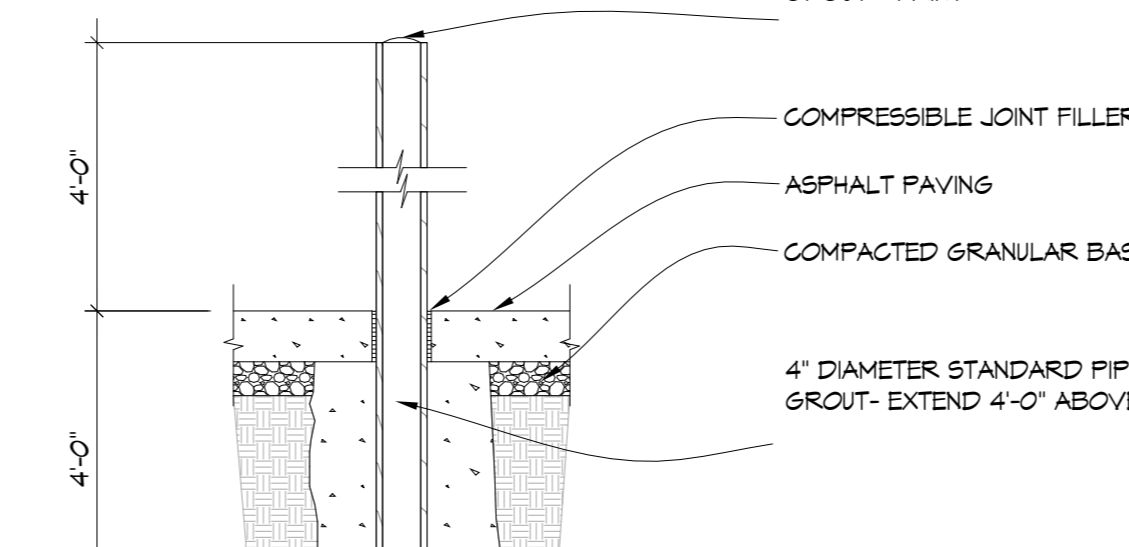
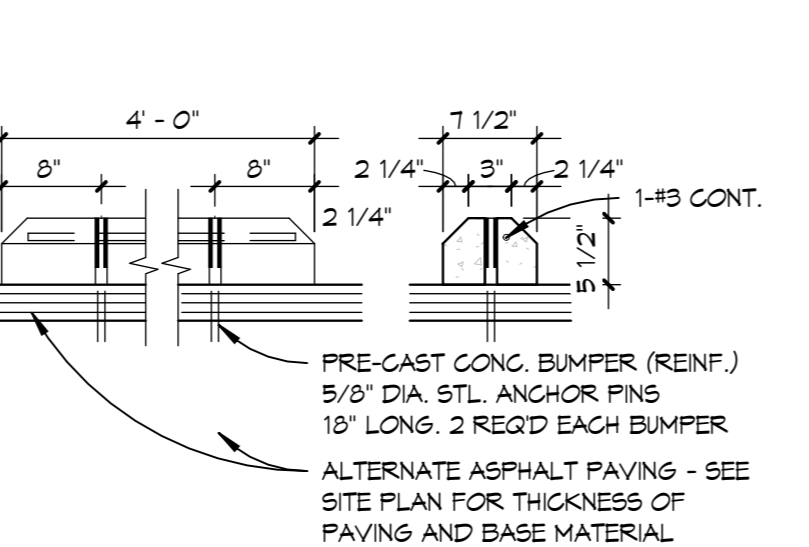
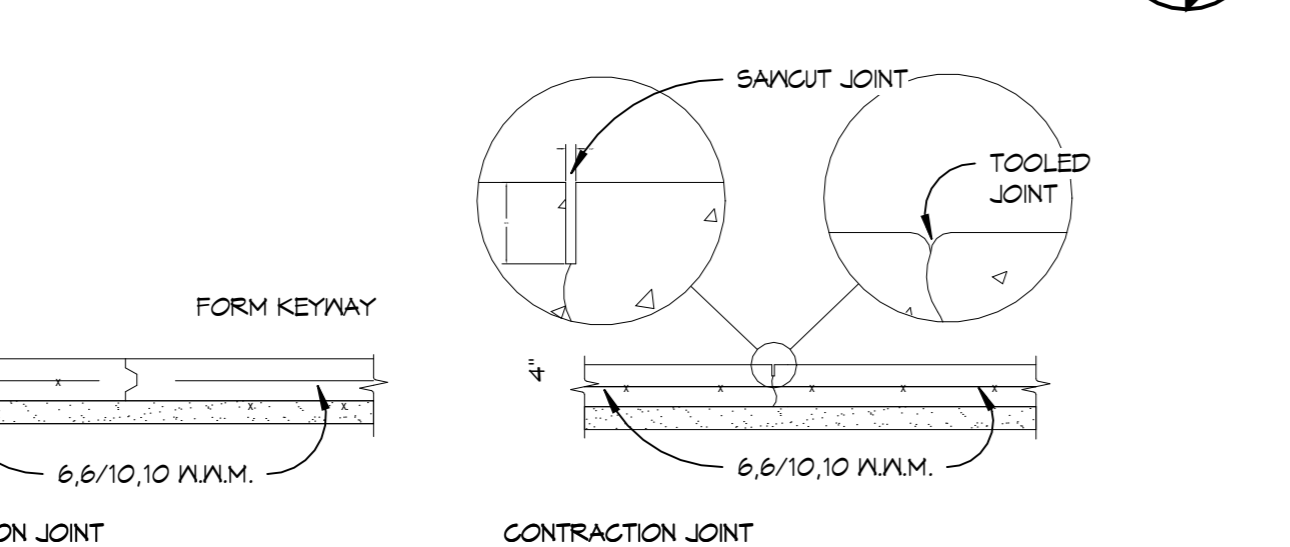
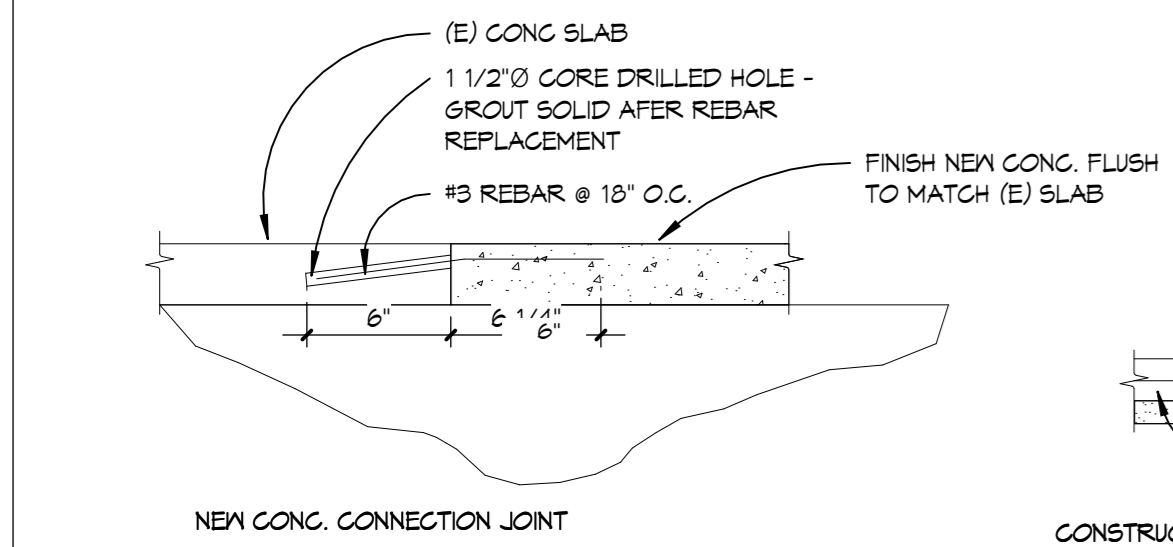
PARKING CALCULATION

1 SPACE PER 200 S.F. GROSS BUILDING:
11,000 / 200 = 55 SPACES REQUIRED
TOTAL SPACES PROVIDED = 61

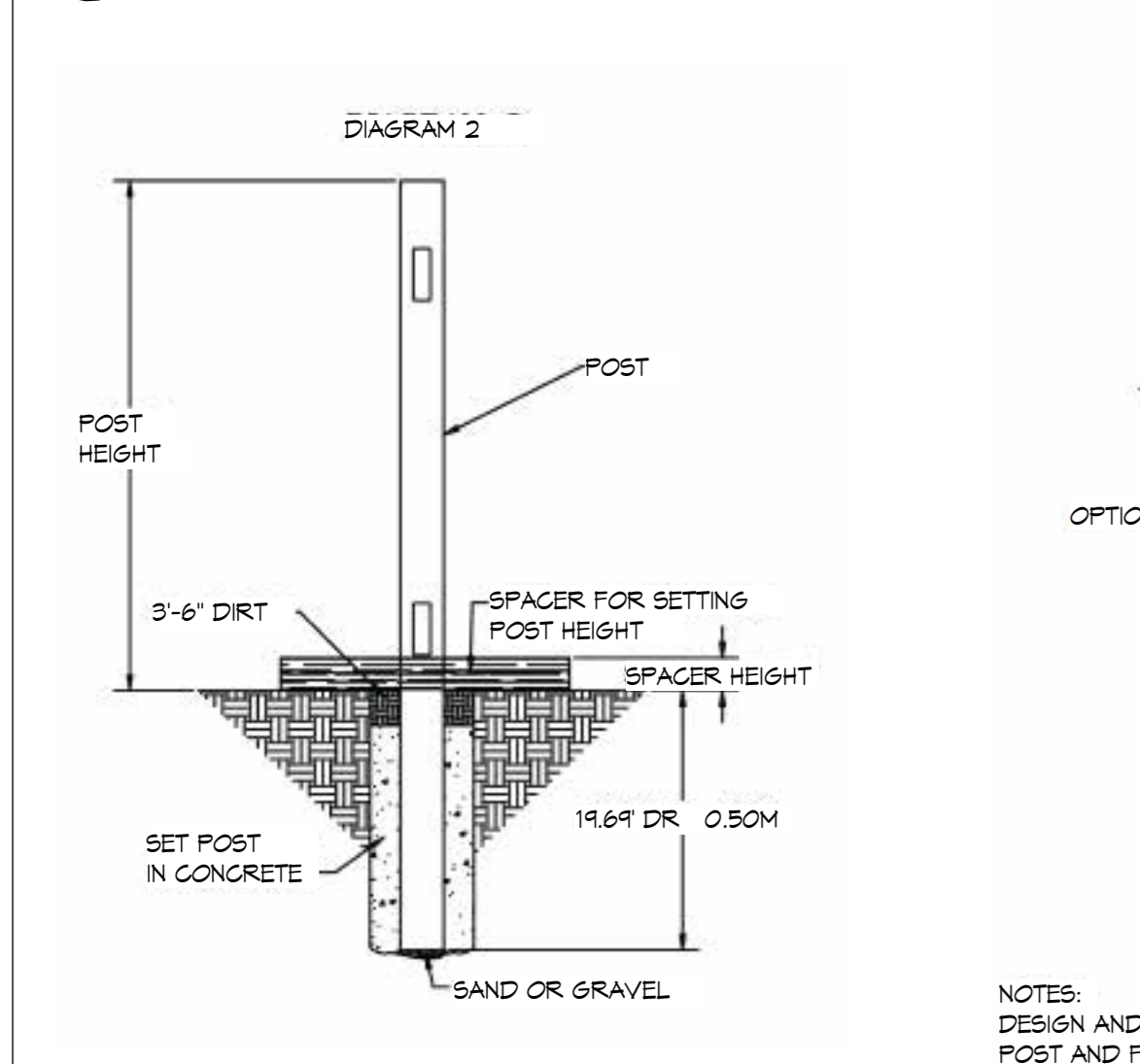
SITE PLAN LEGEND

- (E) PDMB
- NEW MILES CITY FIRE & AMBULANCE FACILITY
- EXISTING MILES CITY FIRE & AMBULANCE FACILITY
- CONCRETE
- ASPHALT
- SOD
- ROCK MULCH

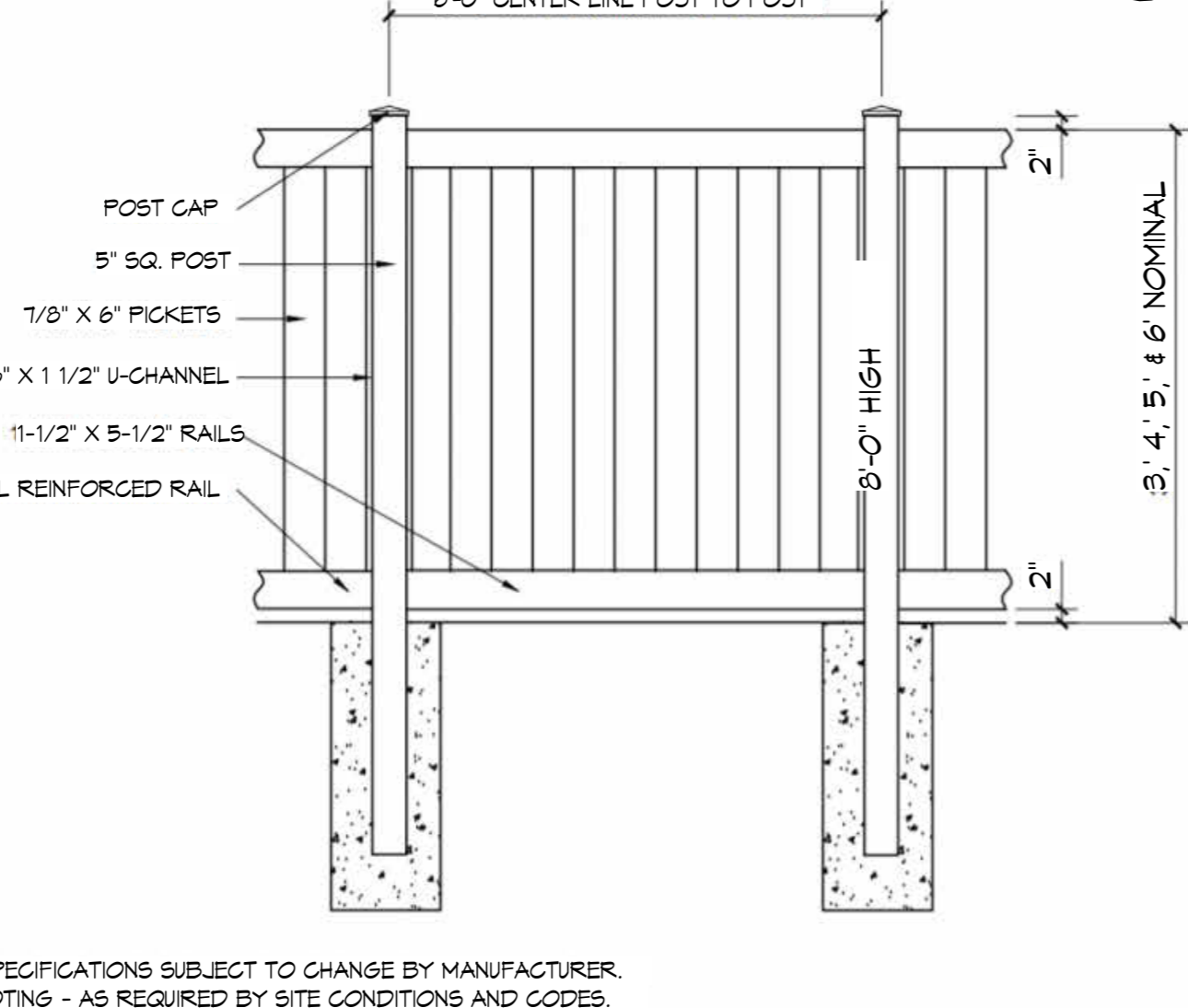
1 ENLARGED SITE PLAN
3/32" = 1'-0"



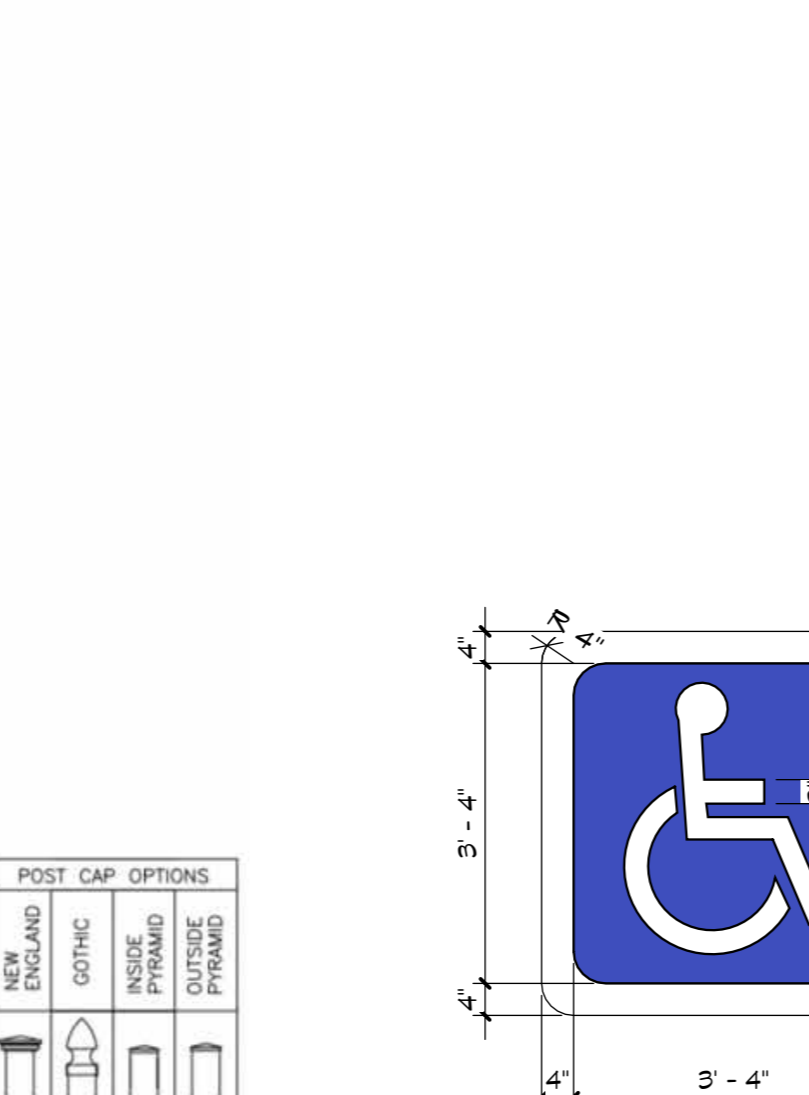
2 CONCRETE JOINT DETAILS
1/12" = 1'-0"



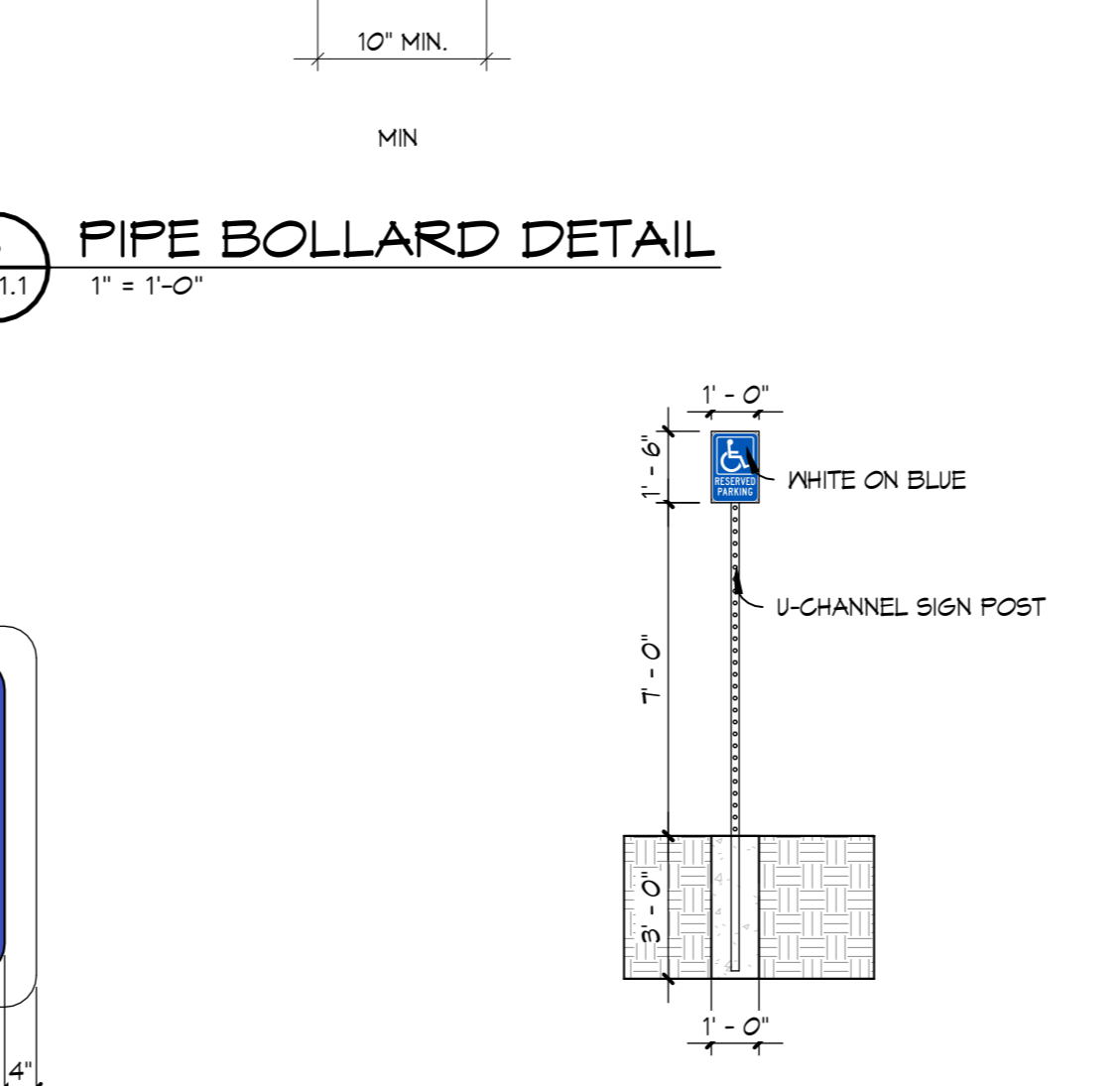
3 PARKING BUMPERS
3" = 1'-0"



5 PIPE BOLLARD DETAIL
1" = 1'-0"



4 FLAG POLE DETAIL - PROVIDED BY OWNER
1" = 1'-0"

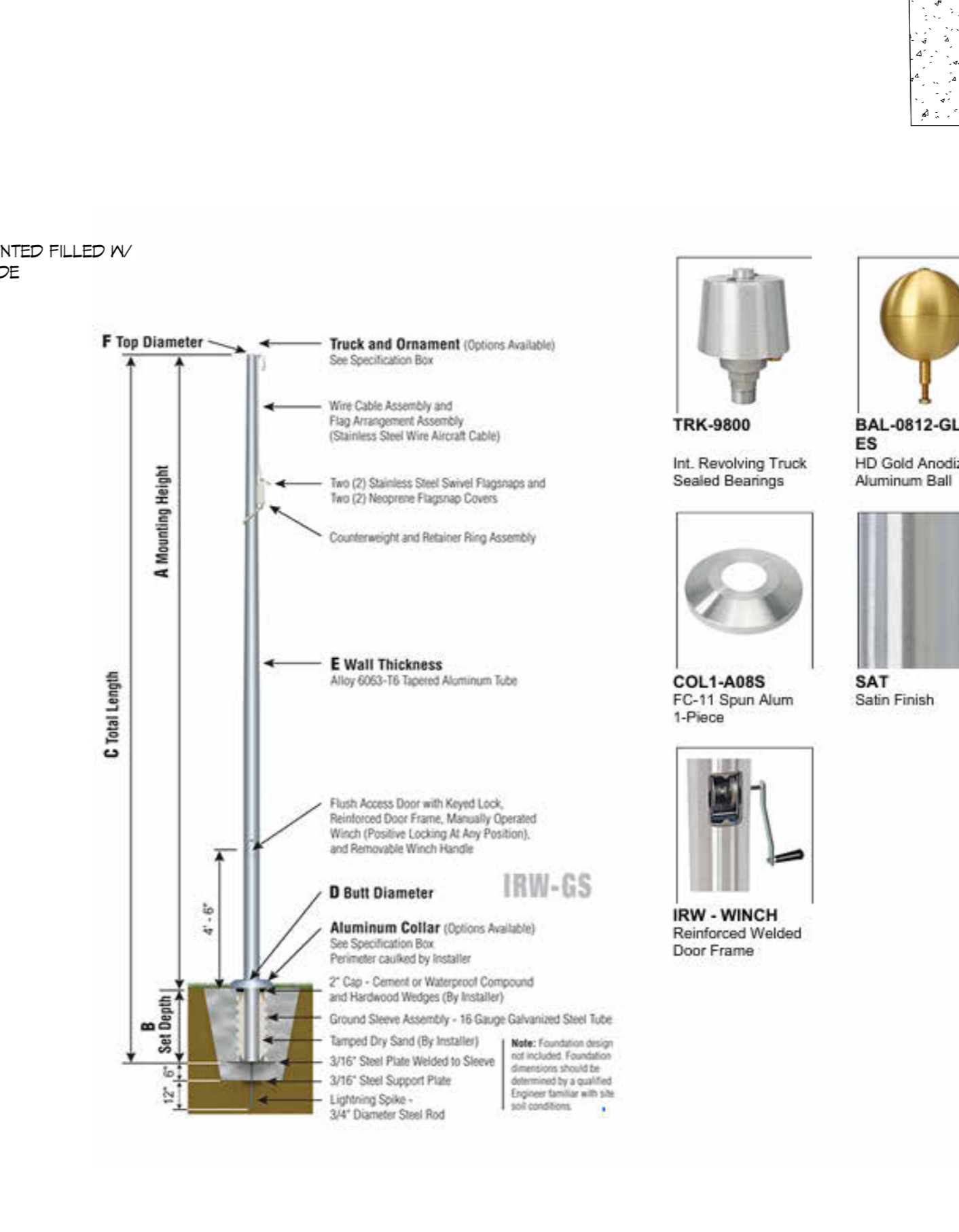


6 VINYL FENCING SECTION
N.T.S.

7 VINYL FENCING ELEVATION DETAIL
N.T.S.

8 ADA PARKING SYMBOL DETAIL
1/2" = 1'-0"

9 HANDICAP SIGNAGE
1/4" = 1'-0"



4 FLAG POLE DETAIL - PROVIDED BY OWNER
1" = 1'-0"

NOTES:
DESIGN AND SPECIFICATIONS SUBJECT TO CHANGE BY MANUFACTURER.
POST AND FOOTINGS - AS REQUIRED BY SITE CONDITIONS AND CODES.

POST CAP OPTIONS
ENGLAND
GENERIC
GENERIC WITH FINISH
GENERIC WITH FINISH AND FINISH
GENERIC WITH FINISH AND FINISH AND FINISH



TRK-9800
Int. Revolving Truck Sealed Bearings

BAL-0812-GLD-ES
HD Gold Anodized Aluminum Ball

COL-1-ABS
FC-11 Spin Alum 1-Piece

SAT
Satin Finish

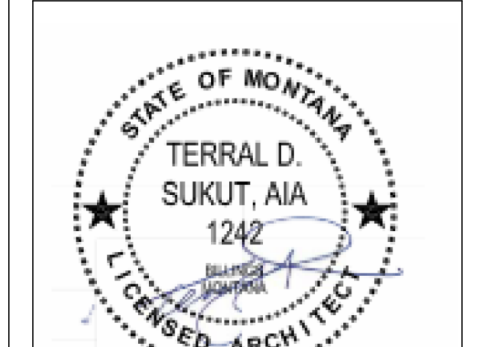
IRW-GS
IRW - WINCH Reinforced Welded Door Frame



MILES CITY FIRE & AMBULANCE FACILITY RENOVATION & ADDITION PROJECT

plan one / architects

ARCHITECTS ENGINEERS PLANNERS



The professional services of the architect are rendered for and are performed in the interest of Miles City Fire & Ambulance Facility. No contractual obligations are assumed by the architect for the benefit of any other person mentioned in the contract.

project: 2404
date: 5/5/2025
revisions:

AS1.1

GENERAL NOTES

- SLOPE ALL SIDEWALKS, FILLS, AND PAVED AREAS AWAY FROM THE BUILDING. DO NOT EXCEED GROSS SLOPE OF 2% ON WALKS.
- ALL CURBS AND SIDEWALKS SHALL CONFORM TO LOCAL CODES AND ORDINANCES. VERIFY WITH THE CITY OF MILES CITY FOR STANDARDS.
- ALL SUB CONTRACTOR SUPPLIES SHALL VISIT THE SITE AND BECOME FAMILIAR WITH THE SCOPE OF WORK. CONTRACTOR SHALL VERIFY LOCATIONS OF ALL UNDERGROUND UTILITIES PRIOR TO INSTALLATION OF NEW IMPROVEMENTS.
- UNLESS OTHERWISE INDICATED, MEET EXISTING GRADES @ THE LIMIT OF DISTURBANCE.
- PROVIDE SLEEVES FOR IRRIGATION LINES TO ALL LANDSCAPE AREAS.
- DUST CONTROL MEASURES MUST BE IMPLEMENTED DURING CONSTRUCTION AS NECESSARY TO MINIMIZE BLOWING DUST.
- MEASURES MUST BE TAKEN DURING CONSTRUCTION ACTIVITIES TO MINIMIZE TRACK OUT (MUD, ROCKS, DEBRIS) FROM THE SITE ONTO THE PUBLIC STREETS.
- WHERE NEW CONC. ABUTS EXISTING, MATCH EXPANSION JOINT LOCATIONS, TYP.
- 6" COMPACTED BASE REQUIRED UNDER ALL NEW CONCRETE.
- MATCH ELEVATION OF ALL EXISTING CONCRETE SIDEWALKS WHERE MATCH UP CONCRETE IS BEING PLACED.

KEYED NOTES

- NOTED THIS: (X)
- NEW CONCRETE CURB & GUTTER - SEE CIVIL DRAWINGS
 - NEW ASPHALT PAVING AS AN ALTERNATE - SEE CIVIL DRAWINGS
ALTERNATE C-1 CONCRETE PAVING
ALTERNATE C-2 ASPHALT PAVING
 - NEW CONCRETE STOOP
 - NEW FLASHPOLE PROVIDED BY OWNER - SEE CIVIL DRAWINGS
 - PROPERTY LINE
 - SUBGRADE EXISTING SURFACE TO REMAIN - SEE CIVIL DRAWING
 - PARKING BUMPER - SEE DETAIL - 3/AS1.1
 - VINYL FENCE - SEE DETAIL - 1/AS1.1
 - NOT USED
 - ADA PARKING SYMBOL - SEE DETAIL - 8/AS1.1
 - PIPE BOLLARD - SEE DETAIL - 5/AS1.1
 - EXISTING SIDEWALK TO REMAIN

CONCRETE JOINTS

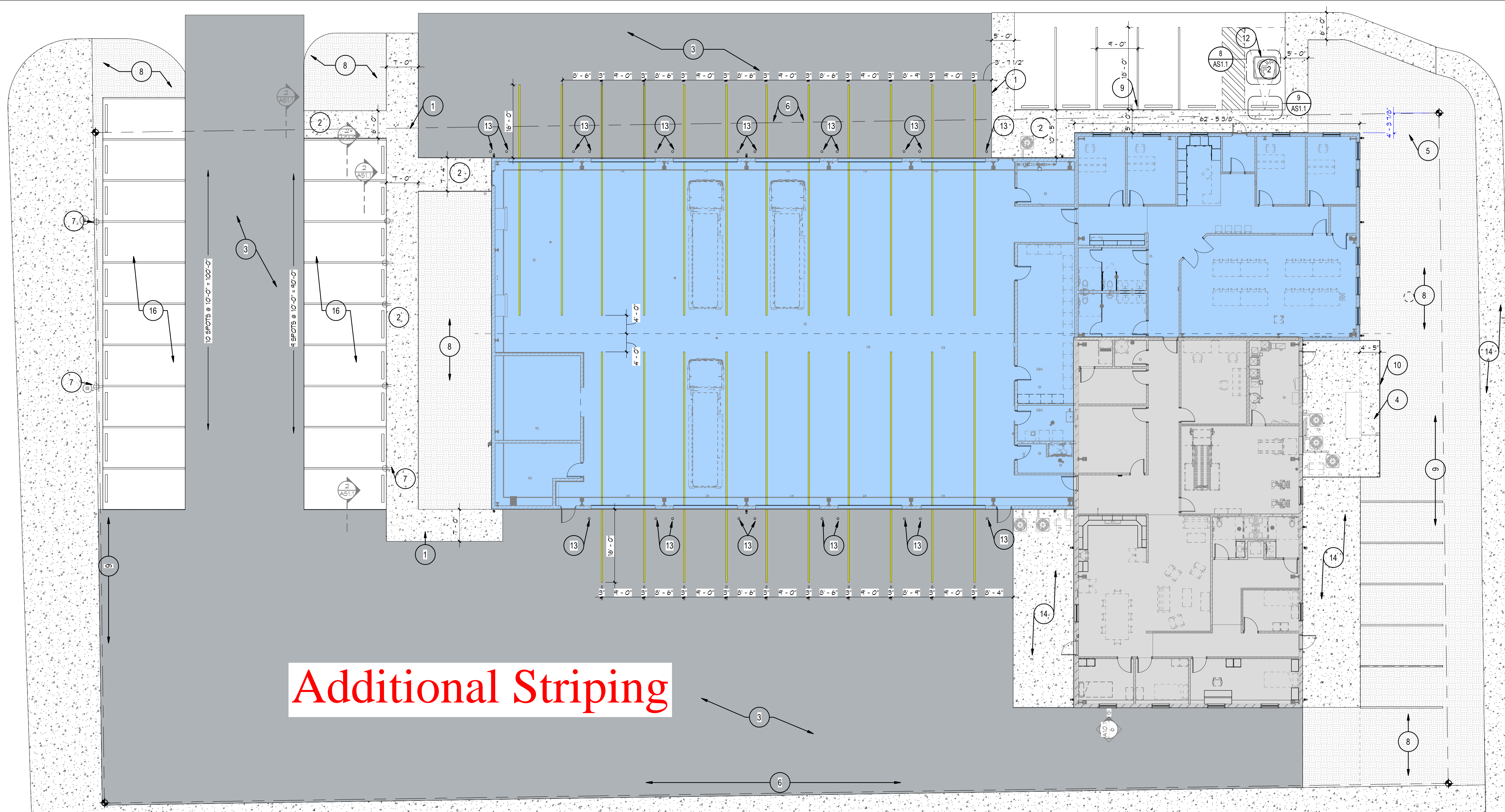
- CONTRACTION JOINTS MAXIMUM 6'-0" O.C. - SEE 5/AS1.2 AND SPECIFICATION SECTION 03 30 00
- CONSTRUCTION JOINTS MAXIMUM 30'-0" O.C. - SEE 5/AS1.2 AND SPECIFICATION SECTION 03 30 00
- ISOLATION JOINTS WHERE CONC. PAVING ABUTS BUILDING OR SITE STRUCTURE - SEE 5/AS1.2 AND SPECIFICATION SECTION 03 30 00

PARKING CALCULATION

1 SPACE PER 200 S.F. GROSS BUILDING:
11,000 / 200 = 55 SPACES REQUIRED
TOTAL SPACES PROVIDED = 61

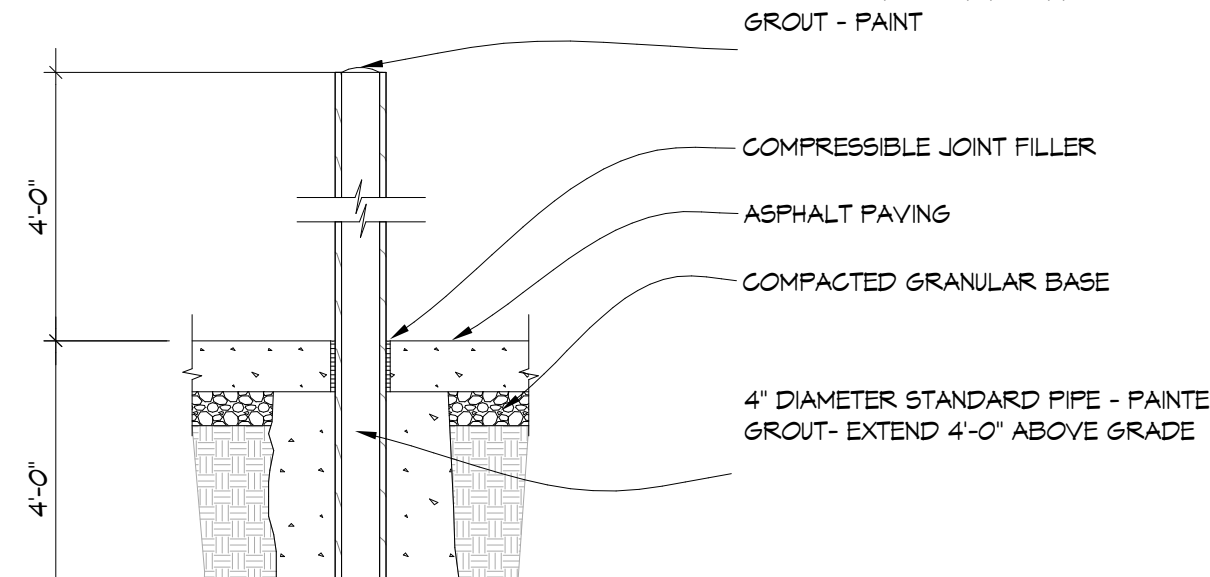
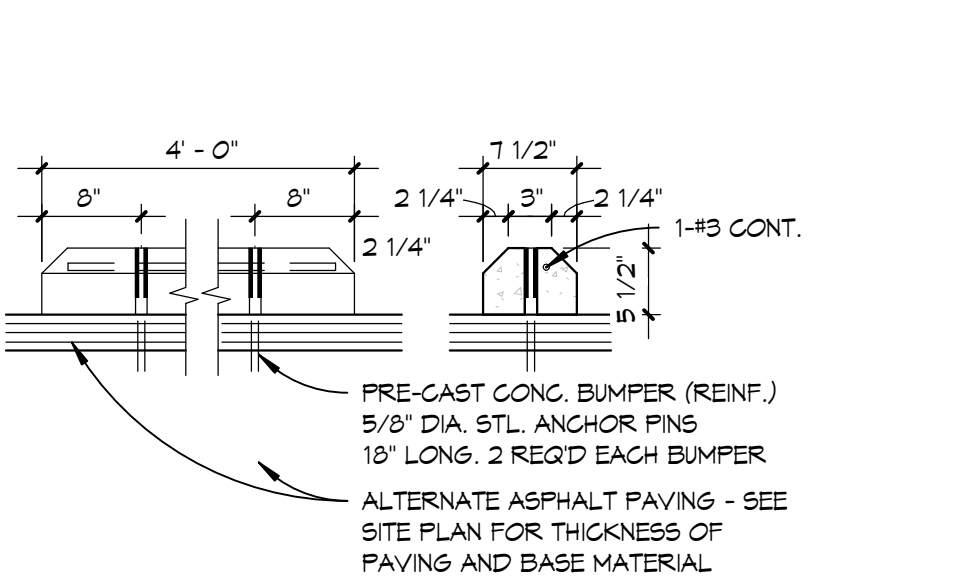
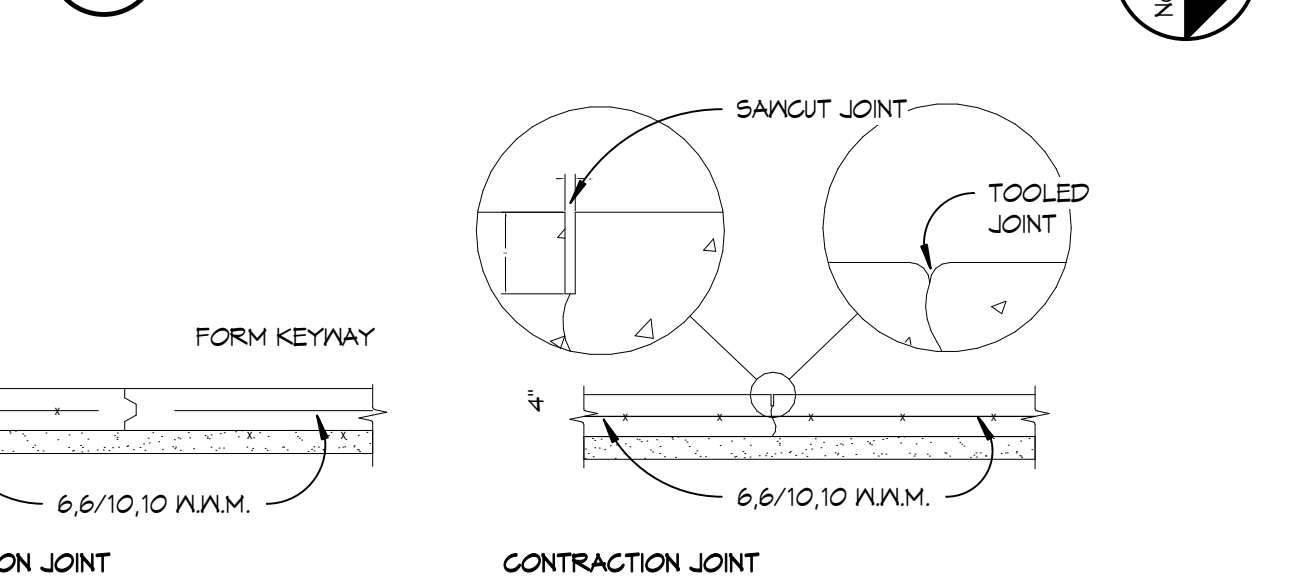
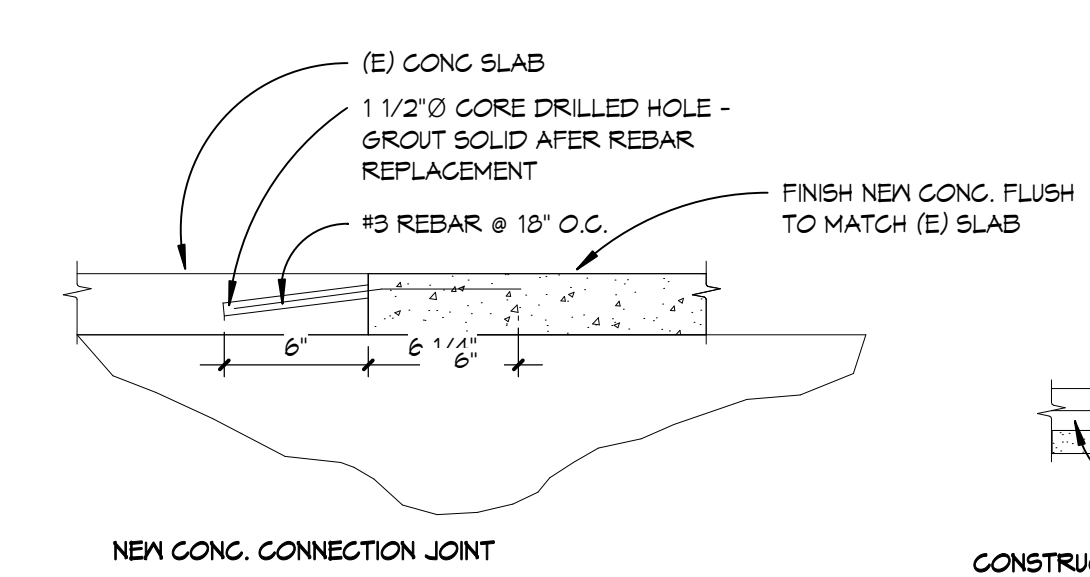
SITE PLAN LEGEND

- (E) PDMB
- NEW MILES CITY FIRE & AMBULANCE FACILITY
- EXISTING MILES CITY FIRE & AMBULANCE FACILITY
- CONCRETE
- ASPHALT
- SOD
- ROCK MULCH



Additional Striping

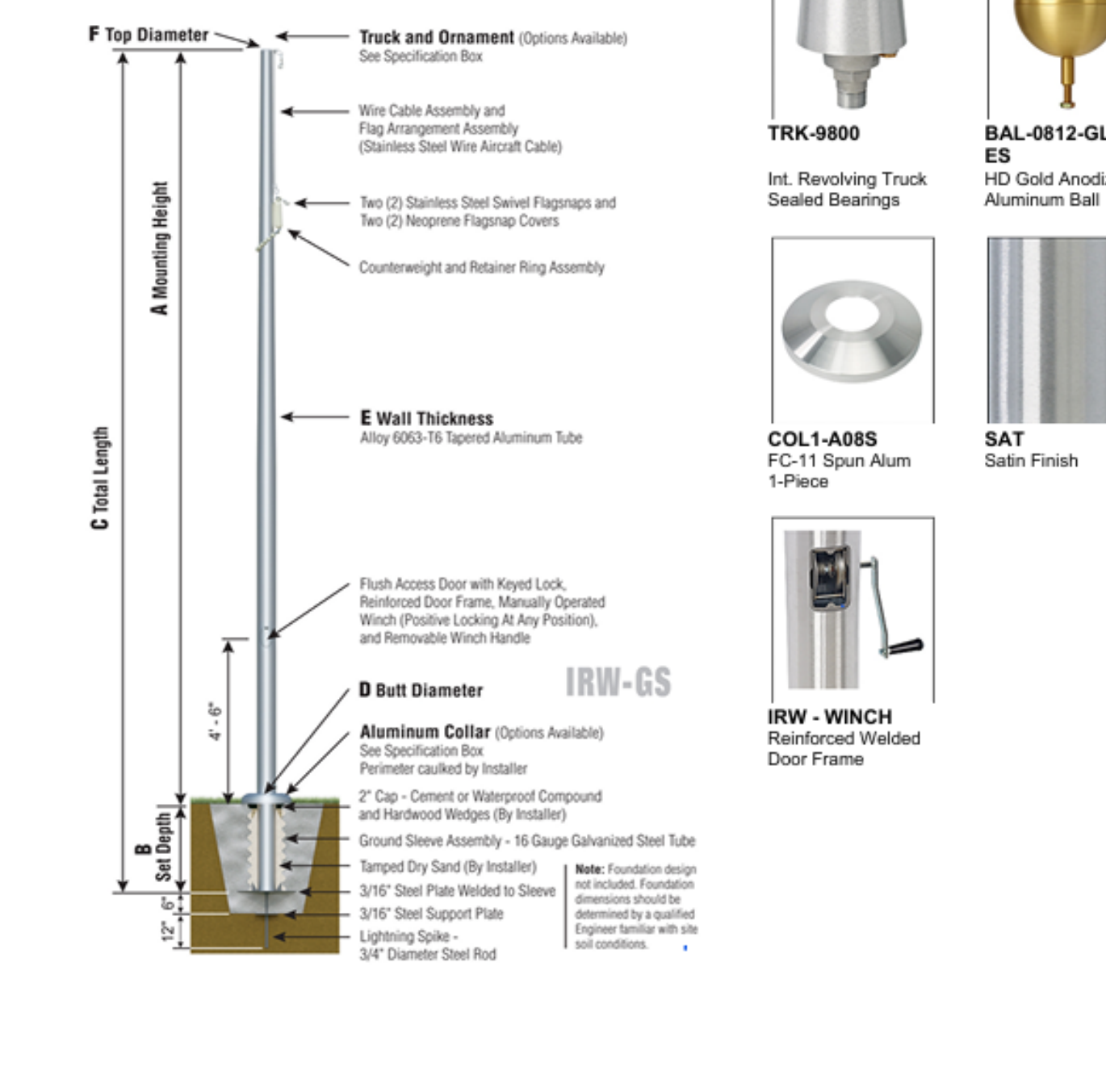
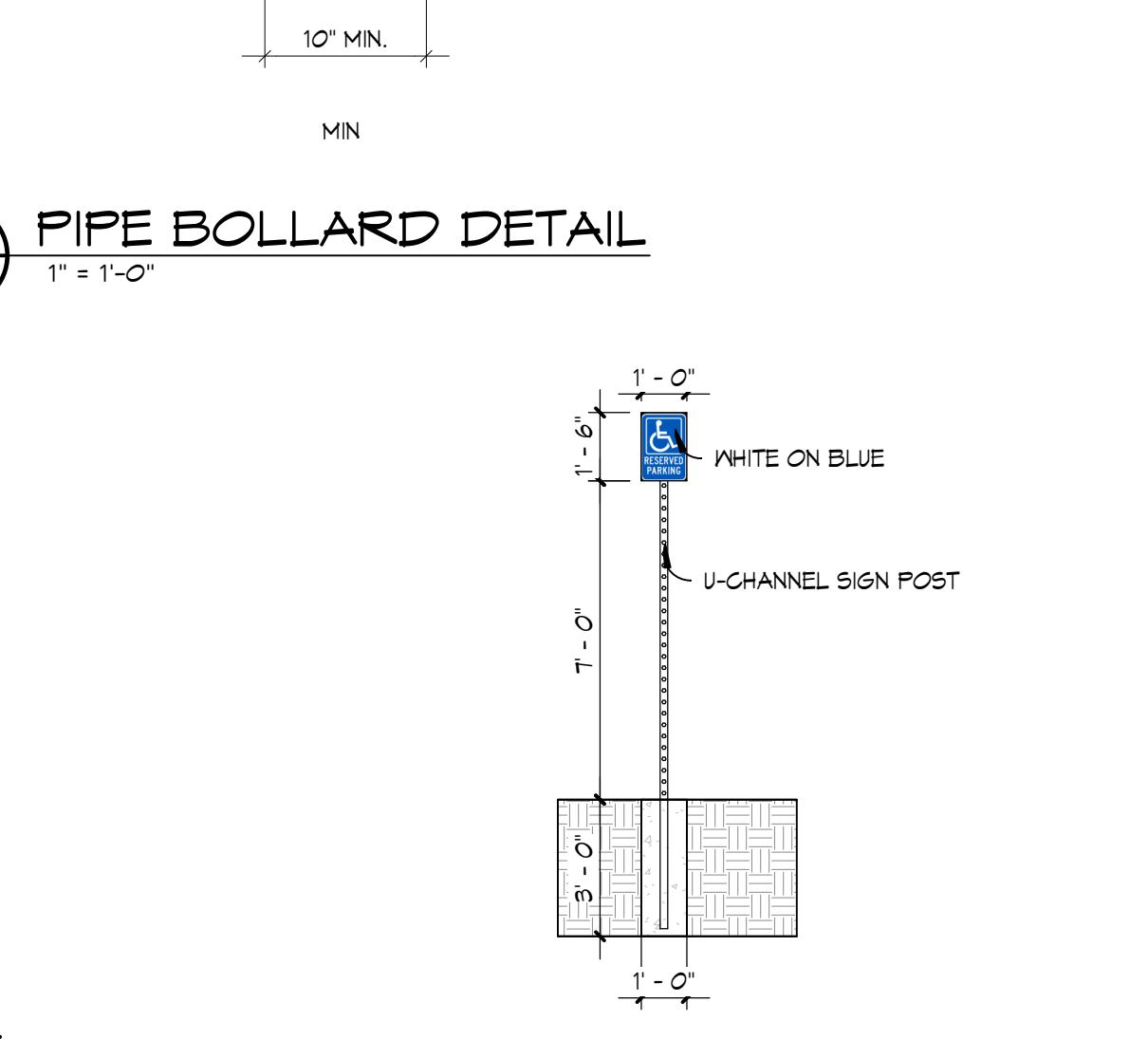
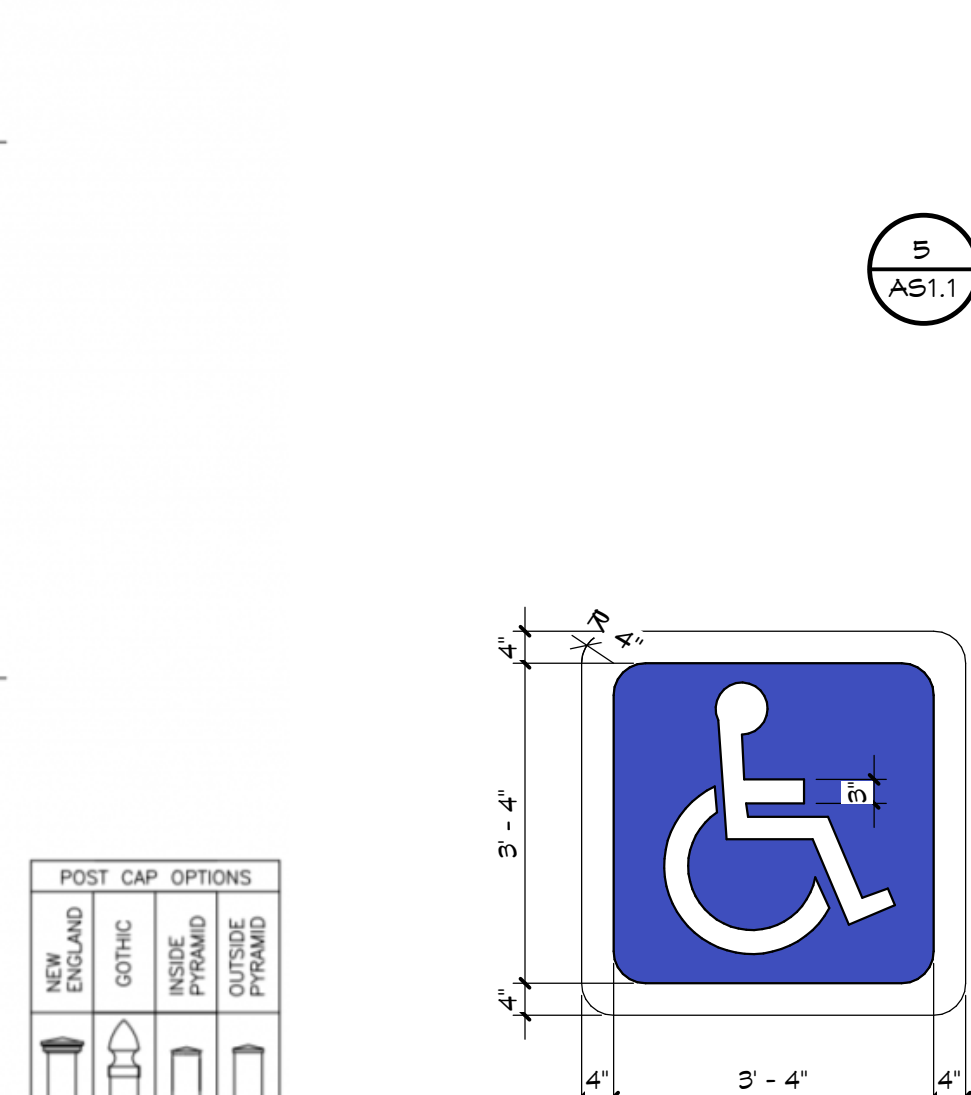
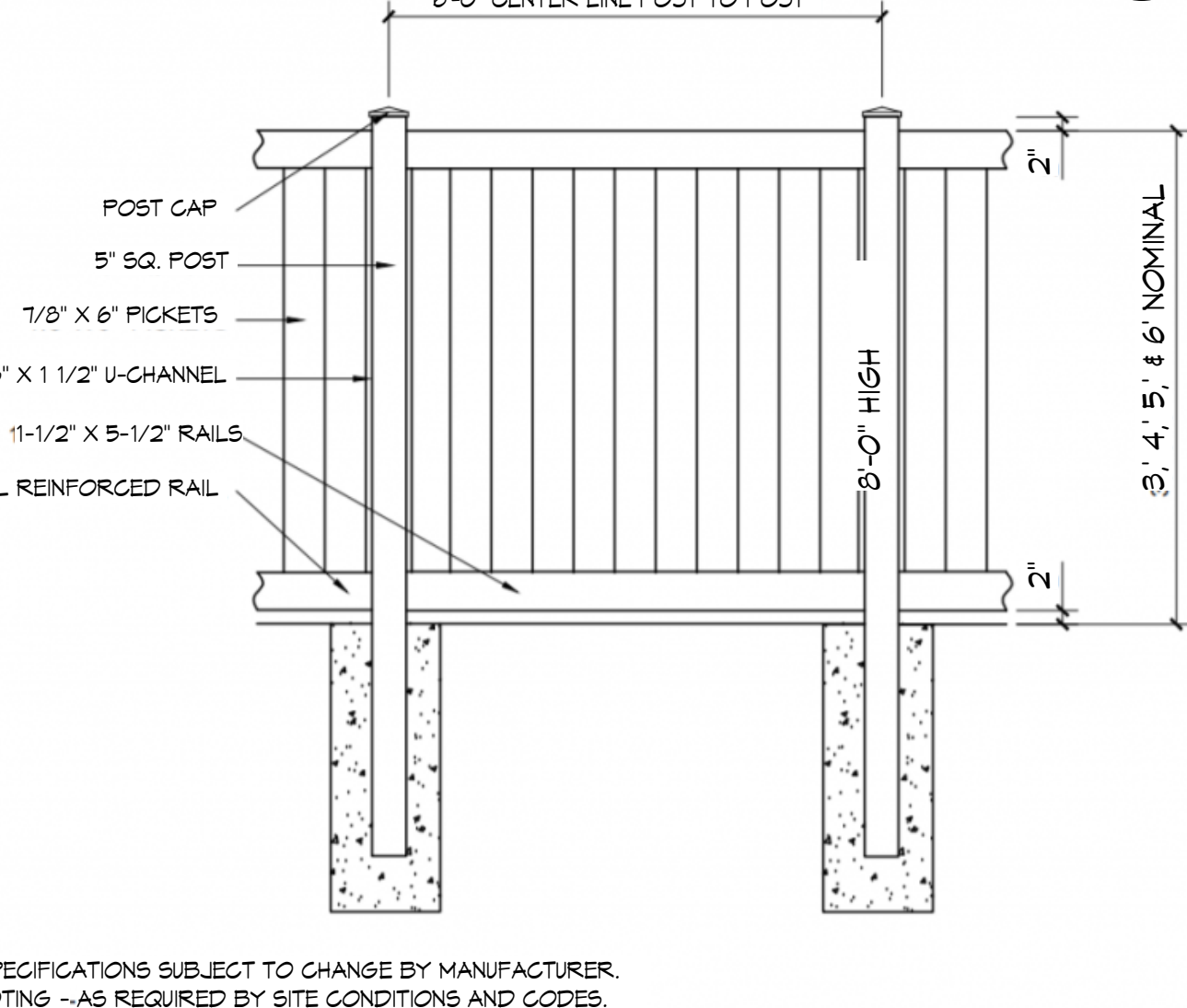
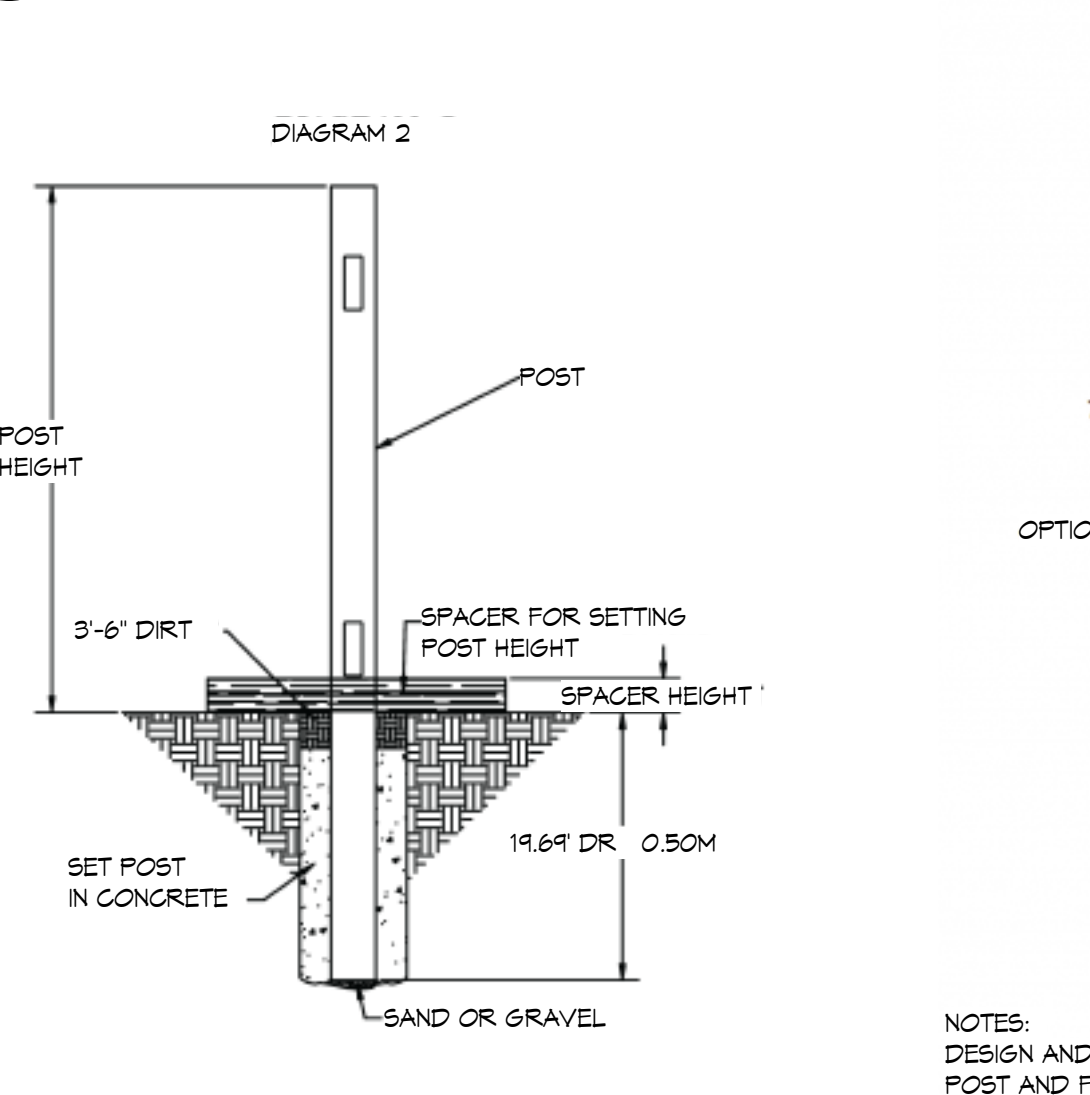
1 ENLARGED SITE PLAN
3/32" = 1'-0"



2 CONCRETE JOINT DETAILS
1/12" = 1'-0"

3 PARKING BUMPER
3" = 1'-0"

5 PIPE BOLLARD DETAIL
1" = 1'-0"



NOTES:
DESIGN AND SPECIFICATIONS SUBJECT TO CHANGE BY MANUFACTURER.
POST AND FOOTINGS --AS REQUIRED BY SITE CONDITIONS AND CODES.

ENG. AND	CONG.	FIN. PRISM	OUTSIDE PRISM
POST CAP OPTIONS			