

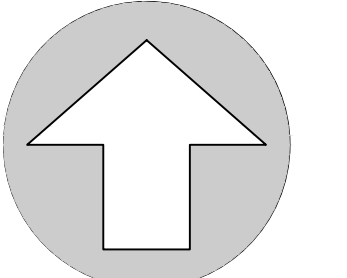
US HIGHWAY 441

GENERAL NOTES

1. ALL PARKING LOT DIMENSIONS AND RADII SHOWN ARE MEASURED FROM FACE OF CURB AND/OR THE EDGE OF PAVEMENT IF THERE IS NOT CURB PROPOSED. ALL RADIAL PARKING IS 9' MIN. WIDTH AT NARROWEST POINT.
2. CONTRACTOR IS RESPONSIBLE FOR VERIFICATION OF LOCATION OF ALL EXISTING UTILITIES AND PROTECTION OF SAME DURING CONSTRUCTION.
3. ELECTRIC SERVICE TO BE COORDINATED WITH G.R.U. ELECTRIC ENGINEERING DEPARTMENT.
4. SIDEWALKS WILL BE CONNECTED TO BUILDING ENTRANCE, COORDINATE LOCATIONS WITH ARCHITECT.

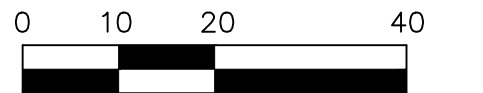


EB 2389  
GAINESVILLE, FLORIDA 32601  
TEL. (352) 373-3541  
www.edaff.com permitting@edaff.com



NORTH

SCALE: 1" = 20'



GRAPHIC SCALE

No.	Date	Comment

THIS ITEM HAS BEEN DIGITALLY SIGNED AND SEALED BY CLAUDIA S. VEGA, P.E. ON THE DATE ADJACENT TO THE SEAL. SIGNATURE MUST BE VERIFIED ON ANY ELECTRONIC COPIES.

Professional Engineer of Record:

Claudia S. Vega, P.E. 51532  
Engineer Certificate No.

Project No: 25-062

Project phase: TOWN OF MICANOPY SUBMITTAL

Project title: MICANOPY COMMUNITY CENTER TOWN OF MICANOPY

Sheet title: DIMENSION PLAN

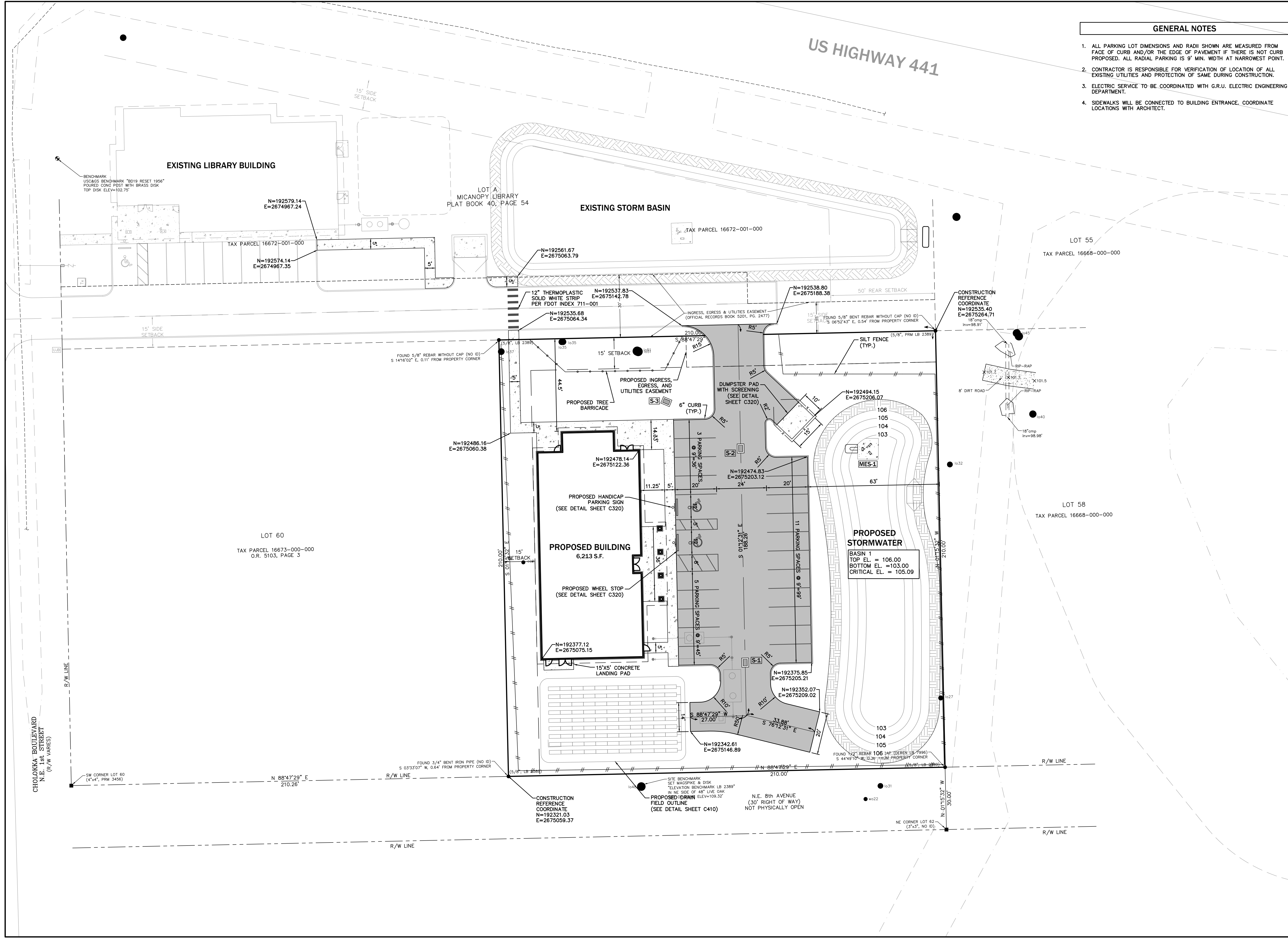
Designed: CSV Sheet No.:

Drawn: MAB

Checked: AC

Date: 01/06/26

C200



\\S:\Eng\projects\Micanopy Community Center\Plans\Construction\DWG\Construction\Plans\M25062J1.dwg, C200 - DIM, 1/6/2026 11:29:31 AM, MBarahona

ANY MODIFICATIONS TO THESE PLANS OR RE-USE OF THESE PLANS MUST BE APPROVED BY AND SIGNED BY THE ARCHITECT.

DRAWN BY: KC, JMA  
DATE: 2025  
PROJECT NO: 25-860

PAUL STRESING ASSOCIATES, INC.  
14617 MAIN STREET  
ALACHUA, FLORIDA 32815  
E-MAIL: ps@paulstresingassociates.com  
REGISTRATION NO. AR0013985 - CA. NO. AA0003977

TOWN OF MICANOPY  
NEW COMMUNITY CENTER  
MICANOPY, FLORIDA

REVISIONS  
ITEM:  
DATE:  
ARCHITECT'S SEAL  
LIC. NO. AR0013985

SHEET NO. A.4

