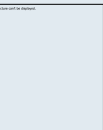
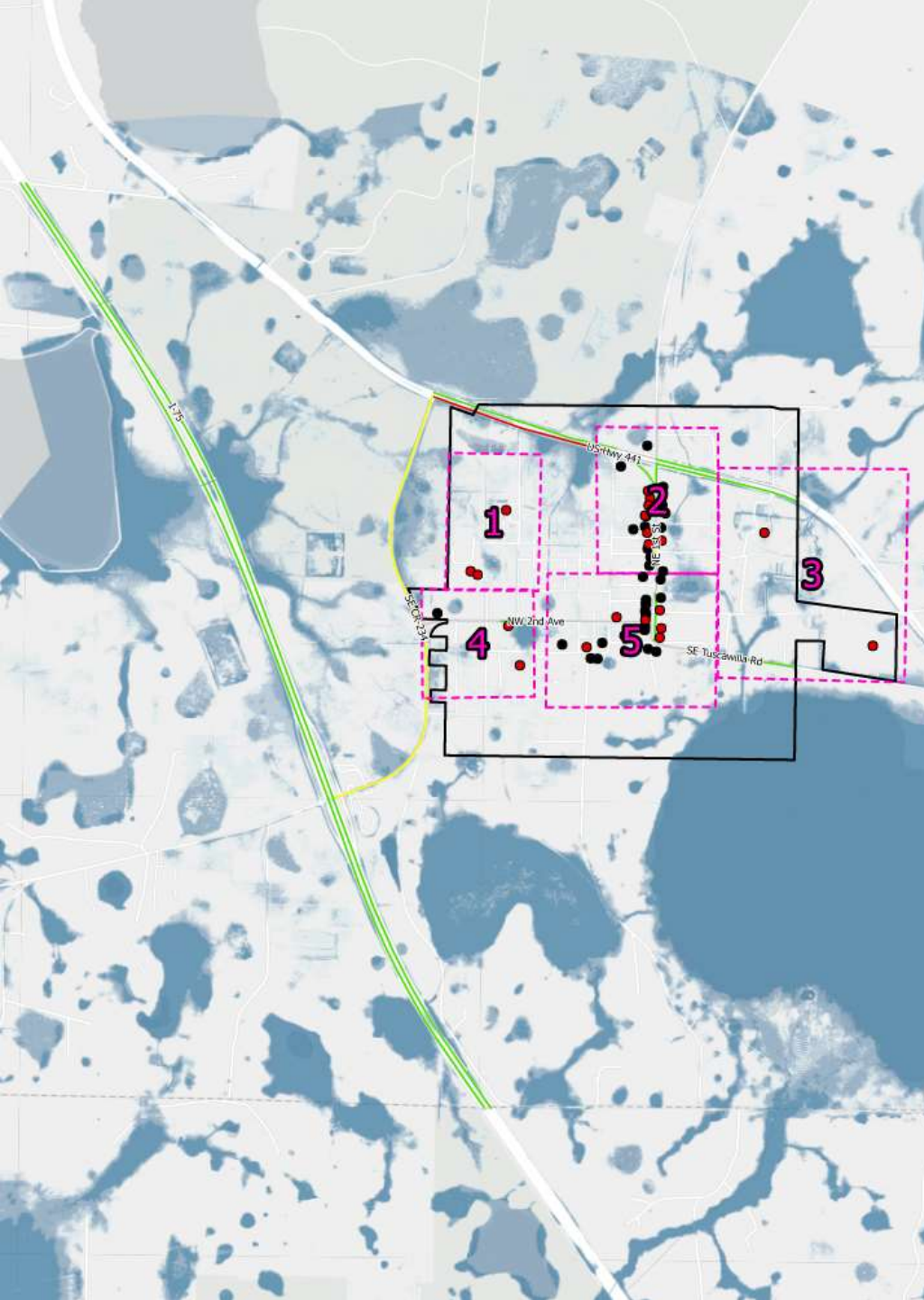


# Vulnerability Assessment and Adaptation Plan Agenda

- 1. Presentation of Final Vulnerability Assessment**
- 2. Presentation of Draft Adaptation Plan including Prioritization of Adaptation Needs – PUBLIC COMMENT**
- 3. Presentation of Final Adaptation Plan**





# Micanopy Vulnerability Assessment

Amanda C. Boone, PE

June 9, 2026

# Vulnerability Assessment

*"The Resilient Florida Program includes a selection of grants for counties, municipalities and Regional Resilience Entities to assess vulnerability, update existing assessments for statutory compliance, conduct adaptation planning and perform peril of flood comprehensive plan amendments, when applicable."*

Source: FDEP

## **Partner with Micanopy to...**

1. Assess the vulnerability of their critical infrastructure to the risk of flooding and sea-level rise; and
2. Develop and implement solutions to improve resiliency.



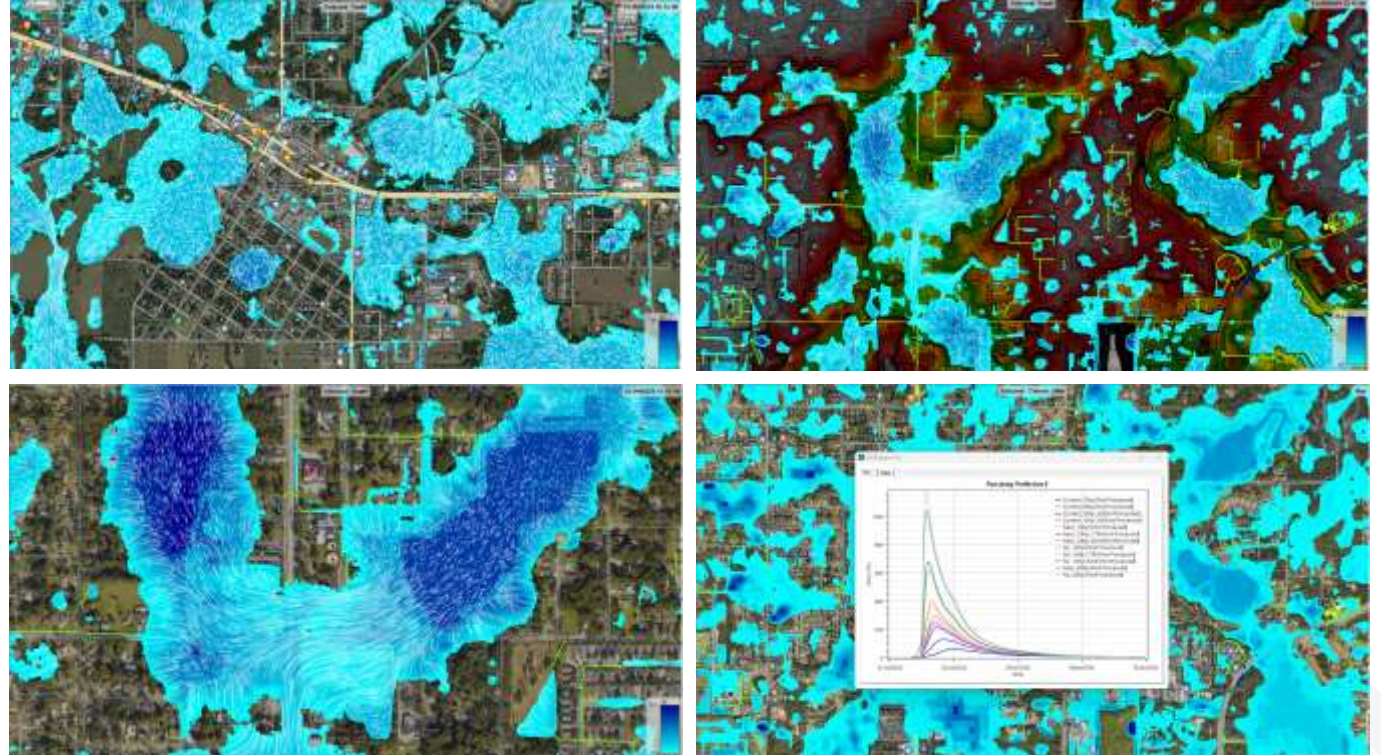
# Vulnerability Assessment – Critical Assets

- ▶ Analyzing Critical Assets
  - Transportation and Evacuation Routes
  - Critical Infrastructure
  - Critical Community and Emergency Facilities
  - Natural, Historic and Cultural Resources



# Vulnerability Assessments – Storm Events

- ▶ Storm Events
  - 100-year
  - 500-year
- ▶ Scenarios
  - Current year
  - 2050 and 2080 planning horizons



# Precipitation Scenarios

**TABLE 2-1: 24-HR PRECIPITATION DEPTHS FOR EACH SCENARIO**

<b>Storm Event</b>	<b>100-year</b>			<b>500-year</b>		
<b>Planning Horizon</b>	Current (2025)	Near (2050)	Far (2080)	Current (2025)	Near (2050)	Far (2080)
<b>Change Factor</b>	N/A	1.21	1.21	N/A	1.28	1.28
<b>24-hr Depth (in)</b>	10.30	12.46	12.46	14.20	18.18	18.18



# Flood Risk

## Critical Assets

Flood Risk	Maximum Depth (ft)
Minimal	$d = 0$
Low	$d < 0.5$
Moderate	$0.5 \leq d < 1$
High	$1 \leq d < 2$
Extreme	$d \geq 2$

## Parcels

Flood Risk	% of Parcel Inundated
Minimal	$p = 0$
Low	$p < 25$
Moderate	$25 \leq p < 50$
High	$50 \leq p < 75$
Extreme	$p \geq 75$

## Roadways

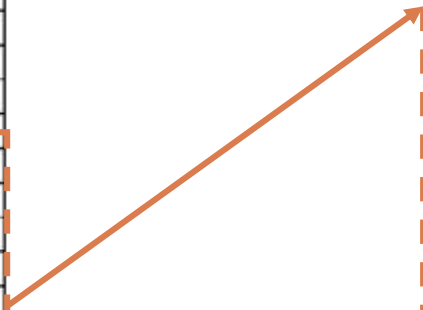
Flood Risk	% of Roadway
Minimal	$p = 0$
Low	$p < 25$
Moderate	$25 \leq p < 50$
High	$50 \leq p < 75$
Extreme	$p \geq 75$

TABLE 3-11: CONSEQUENCE OF FAILURE RATINGS

Asset Category	Asset Type	CoFR
Transportation	Airports	3
	Bridges	3
	Bus Terminals	2
	Major Roads	4
	Marinas	2
	Rail Facilities	2
	Railroad Bridges	2
	Evacuation Routes	4
Critical Infrastructure	Wastewater Treatment Facilities	4
	Lift Stations	4
	Stormwater Treatment Facilities	4
	Stormwater Pump Stations	4
	Drinking Water Facilities	4
	Solid and Hazardous Waste Facilities	4
	Military Installations	4
	Communication Center	4
Disaster Debris Management Site	4	
Critical Community and Emergency Facilities	School	3
	Colleges/Universities	3
	Community Center	3
	Correctional Facilities	3
	Local Government Facilities	3
	Affordable Public Housing	3
	State Government Facilities	3
	Disaster Recovery Centers	4
	<del>Emergency Medical Service Facilities</del>	<del>4</del>
	Emergency Operation Centers	4
	Fire Station	4
	Health Care Facilities	4
	Hospitals	4
	Law Enforcement Facility	4
	Logistic Staging Areas	4
	Risk Shelter Inventory	4
	Conservation Lands	1
	Parks	1
<del>Shorelines</del>	<del>1</del>	
Natural, Cultural, and Historical Resources	Surface Waters	1
	Wetlands	1
	Historical and Cultural Asset	1

# Consequence of Failure Rating

Emergency Medical Service Facilities	4
Emergency Operation Centers	4
Fire Station	4
Health Care Facilities	4
Hospitals	4
Law Enforcement Facility	4
Logistic Staging Areas	4
Risk Shelter Inventory	4
Conservation Lands	1
Parks	1
<del>Shorelines</del>	<del>1</del>



Sensitivity Classification	Sensitivity Rating	Definition	Example
Minimal	SR = 0	No impact anticipated	Minimal flooding (FRR=0) at critical assets with any CoF rating
Low	$0 < SR < 3$	Flooding may occur, but no impact to critical services is anticipated	Example: A historical and cultural asset (CoFR=1) is inundated by a depth of 0.75 feet (FRR=2): SR=2.
Moderate	$3 \leq SR < 6$	Impact to operations is anticipated, but critical services are not expected to be interrupted	Example 1: A historical and cultural asset (CoFR=1) is inundated by a depth of 1.5 feet (FRR=3): SR=3. Example 2: A fire station (CoFR=4) is inundated by a depth of 0.4 feet (FRR=1): SR=4.
High	$6 \leq SR < 12$	Impact to operations is anticipated, and critical services may be interrupted	Example 1: A school (CoFR=3) is inundated by a depth of 1.5 feet (FRR=3): SR=9. Example 2: A fire station (CoFR=4) is inundated by a depth of 0.75 feet (FRR=2): SR=8.
Extreme	$SR \geq 12$	Asset may become inoperable or permanently damaged, and significant impact to critical services is anticipated	Example: A fire station (CoFR=4) is inundated by a depth of 1.5 feet (FRR=3): SR=12





**TABLE 3-14: FOCUS AREA 1 CRITICAL ASSETS**

Asset ID	Asset Name	Owner/Jurisdiction
12	First Baptist Church	Private
24	Micanopy Branch Library	County
29	Micanopy Town Hall	Municipal
31, 38, 42	NE 1 <sup>st</sup> Street	County
168, 177	US Hwy 441	Government Agency (Federal)





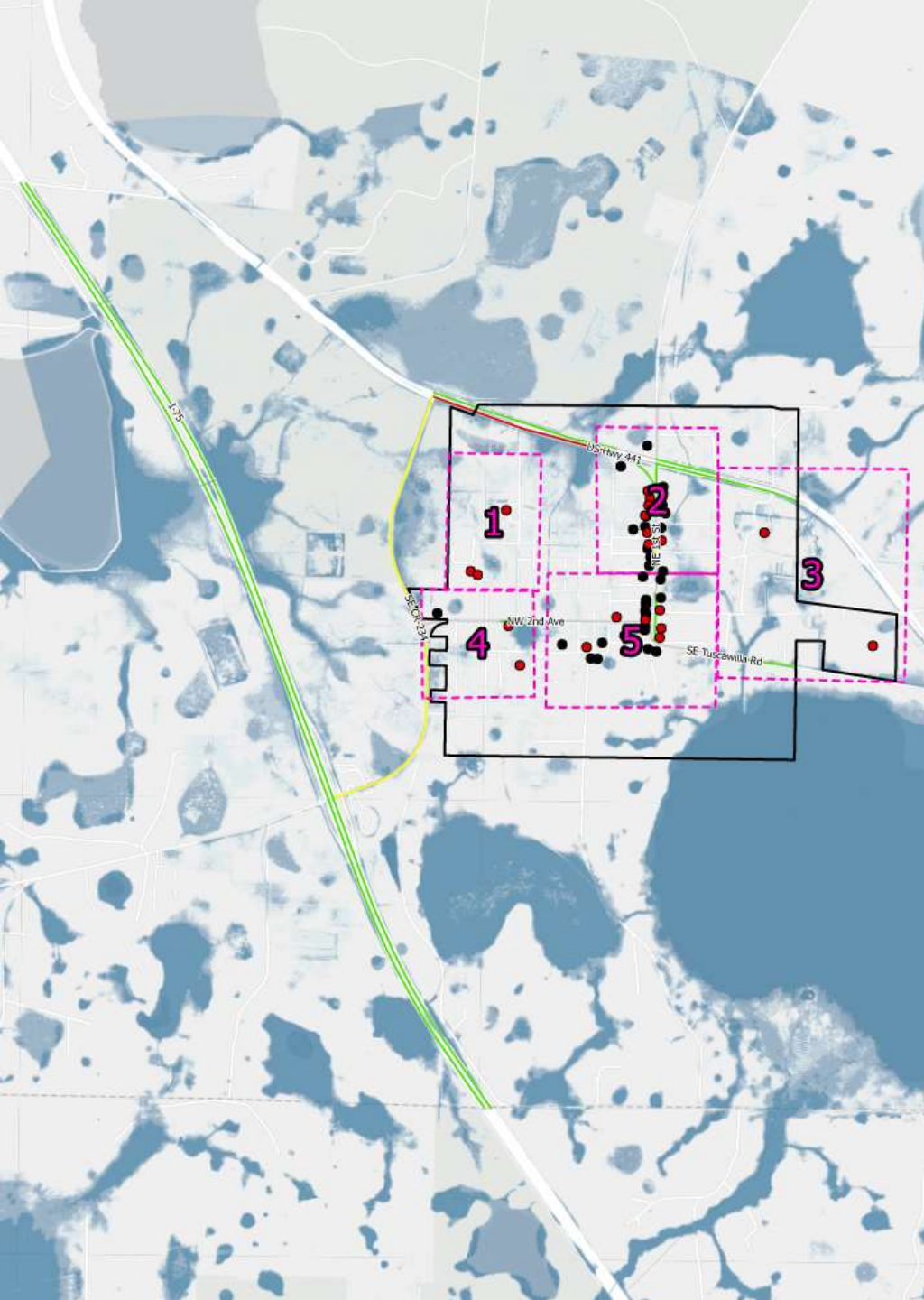
**TABLE 3-16: FOCUS AREA 2 CRITICAL ASSETS**

Asset ID	Asset Name	Owner/Jurisdiction
18	Micanopy Water System	Municipal
22	Micanopy Middle School	Private
23	Micanopy Area Cooperative School	Private
4	Micanopy Ball Park #1	Municipal
27	Micanopy Cemetery	Private
4, 5	NW 2nd Ave	Municipal
193, 195	SE CR-234	County



Questions?





# Micanopy Draft Adaptation Plan

Amanda C. Boone, PE

June 9, 2026



# Adaptation Plan

**TABLE 4-2: ADAPTATION PROJECT RECOMMENDATIONS**

Projects Identifier	Priority	Project Related Asset ID	Project to be Implemented	Planning Horizon	Likely Responsible Entity(ies)	Potential Community Partner(s)
Regulatory & Planning	High	All	Emergency Management Plan development	Short (0-5 years)	Micanopy Building Department, Planning Department, Town Administration and Finance Department	North Central Florida Regional Planning Council; Florida League of Cities; Alachua County
	High		Hazard Mitigation Plan development	Short (0-5 years)		
	High		Emergency Response Plan development	Short (0-5 years)		
	High		Communications Plan to spread public awareness and communicate flood risks with targeted private owners.	Short (0-5 years)		
	Mid		Detailed code review to identify necessary or beneficial updates	Short (0-5 years)		
Focus Area 1	High	24, 29, 31, 38, 42	Coordination with County to assess NE 1 <sup>st</sup> Street for improved drainage conveyance and storage or elevation opportunities.	Long (0-25 years)	Micanopy Building Department, Planning Department, Town Administration and Finance Department	Alachua County, regional, and federal entities
	Mid	168, 177	Coordination with government agency to assess US Hwy 441 for improved drainage conveyance and storage or elevation opportunities.	Long (0-25 years)		
	Mid	12	Education and outreach with property owner and facility manager of the First Baptist Church	Mid (0-10 years)		

Projects Identifier	Priority	Project Related Asset ID	Project to be Implemented	Planning Horizon	Likely Responsible Entity(ies)	Potential Community Partner(s)
Focus Area 2	High	18	Floodproofing, elevation, relocation, or storage project at the Water System BLDG 2.	Mid (0-10 years)	Micanopy Building Department, Planning Department, Town Administration and Finance Department	Alachua County, regional, and state entities
	High	4, 5, 193, 195	Coordination with the County to assess NW 2 <sup>nd</sup> Ave and SE CR-234 for improved drainage conveyance and storage or elevation opportunities.	Long (0-25 years)		
	Mid	22, 23, 27	Private education and outreach with property owners and facility manager of the privately owned school and cemetery.	Mid (0-10 years)		
	Low	4	Enhanced Flood storage or drainage conveyance opportunities assessment at Ball Park #1.	Mid (0-10 years)		



# Adaptation Plan (cont'd)

Ownership	Ownership Rating
Municipality	5
County	2
Government Agency	1
Private	0.5

Table 4-2 Planning Horizon	Rating
Short	3
Mid	2
N/A	0.5
Long	1

Far 100-Year SR	Rating
Extreme	4
High	3
Low	1
Minimal	0.5
Moderate	2

Table 4-2 Priority Rating	Rating
N/A	1
Low	1
Mid	3
High	5

# Adaptation Plan (cont'd)

**TABLE G-2: SENSITIVITY CLASSIFICATIONS AT CRITICAL ASSETS AND CRITICAL ROADWAYS**

Priority	Asset ID	Name	Owner	Asset Class	Asset Type	Current 100-Year	Near 100-Year	Far 100-Year	Current 500-Year	Near 500-Year	Far 500-Year
1	18	MICANOPY WATER SYSTEM - BLDG 2	Municipality	Critical Infrastructure	Drinking Water Facilities	Extreme	Extreme	Extreme	Extreme	Extreme	Extreme
2	24	MICANOPY BRANCH LIBRARY - BLDG	County	Critical Community and Emergency Facilities	Community Centers	Moderate	Moderate	Moderate	Moderate	Moderate	Moderate
2	29	Micanopy Town Hall - BLDG	Municipality	Critical Community and Emergency Facilities	Local Government Facilities	Moderate	Moderate	Moderate	Moderate	Moderate	Moderate
4	5	MICANOPY TOWN	Municipality	Natural, Cultural, and	Parks	Low	Low	Low	Low	Low	Low



# Adaptation Plan (cont'd)

Priority	Asset ID	Name	Owner	Asset Class	Asset Type	Current 100-Year	Near 100-Year	Far 100-Year	Current 500-Year	Near 500-Year	Far 500-Year
		BASKETBALL COURT		Historical Resources							
5	42	NE 1st St	Municipality	Transportation and Evacuation Routes	Major Roadways	High	Extreme	Extreme	High	Minimal	Minimal
6	193	SE CR-234	County	Transportation and Evacuation Routes	Evacuation Routes	High	High	High	High	Extreme	Extreme
7	195	SE CR-234	County	Transportation and Evacuation Routes	Evacuation Routes	High	High	High	High	Extreme	Extreme
8	31	O'Steen Brothers Inc - BLDG 7	Private	Critical Infrastructure	Solid and Hazardous Waste Facilities	Extreme	Extreme	Extreme	Extreme	Extreme	Extreme
9	31	O'Steen Brothers Inc - BLDG 8	Private	Critical Infrastructure	Solid and Hazardous Waste Facilities	Extreme	Extreme	Extreme	Extreme	Extreme	Extreme
10	31	O'Steen Brothers Inc - BLDG 4	Private	Critical Infrastructure	Solid and Hazardous Waste Facilities	Extreme	Extreme	Extreme	Extreme	Extreme	Extreme
11	31	O'Steen Brothers Inc - BLDG 10	Private	Critical Infrastructure	Solid and Hazardous Waste Facilities	High	High	High	High	Extreme	Extreme
12	31	O'Steen Brothers Inc - BLDG 12	Private	Critical Infrastructure	Solid and Hazardous Waste Facilities	High	High	High	High	High	High



# Adaptation Plan (cont'd)

Priority	Asset ID	Name	Owner	Asset Class	Asset Type	Current 100-Year	Near 100-Year	Far 100-Year	Current 500-Year	Near 500-Year	Far 500-Year
13	31	O'Steen Brothers Inc - BLDG 2	Private	Critical Infrastructure	Solid and Hazardous Waste Facilities	High	High	High	High	High	High
14	31	O'Steen Brothers Inc - BLDG 6	Private	Critical Infrastructure	Solid and Hazardous Waste Facilities	High	High	High	High	Extreme	Extreme
15	4	MICANOPY BALL PARK #1	Municipality	Natural, Cultural, and Historical Resources	Parks	Moderate	Moderate	Moderate	Moderate	Moderate	Moderate
16	4	NW 2nd Ave	Municipality	Transportation and Evacuation Routes	Major Roadways	Moderate	Moderate	Moderate	Moderate	Extreme	Extreme
17	31	NE 1st St	Municipality	Transportation and Evacuation Routes	Major Roadways	Moderate	Moderate	Moderate	Moderate	Moderate	Moderate
18	38	NE 1st St	Municipality	Transportation and Evacuation Routes	Evacuation Routes	Moderate	Moderate	Moderate	Moderate	Moderate	Moderate
19	5	NW 2nd Ave	Municipality	Transportation and Evacuation Routes	Major Roadways	Minimal	Moderate	Moderate	Moderate	Moderate	Moderate
20	31	O'Steen Brothers Inc - BLDG 9	Private	Critical Infrastructure	Solid and Hazardous Waste Facilities	Minimal	Moderate	Moderate	Minimal	Moderate	Moderate
21	31	O'Steen Brothers Inc - BLDG 3	Private	Critical Infrastructure	Solid and Hazardous Waste Facilities	Minimal	Moderate	Moderate	Moderate	Moderate	Moderate



# Adaptation Plan (cont'd)

Priority	Asset ID	Name	Owner	Asset Class	Asset Type	Current 100-Year	Near 100-Year	Far 100-Year	Current 500-Year	Near 500-Year	Far 500-Year
22	6	MICANOPY NATIVE AMERICAN HERITAGE PRESERVE PARK	Municipality	Natural, Cultural, and Historical Resources	Parks	Low	Low	Low	Low	Low	Low
23	8	MICANOPY BALL PARK #2	Municipality	Natural, Cultural, and Historical Resources	Parks	Low	Low	Low	Low	Low	Low
24	25	MICANOPY HISTORICAL SOCIETY MUSEUM - BLDG 2	Municipality	Natural, Cultural, and Historical Resources	Historical and Cultural Assets	Low	Low	Low	Low	Low	Low
25	22	MICANOPY MIDDLE SCHOOL - BLDG 2	Private	Critical Community and Emergency Facilities	Schools	Moderate	Moderate	Moderate	Moderate	Moderate	Moderate
26	23	MICANOPY AREA COOP SCHOOL - BLDG 2	Private	Critical Community and Emergency Facilities	Schools	Moderate	Moderate	Moderate	Moderate	Moderate	Moderate
27	12	FIRST BAPTIST CHURCH - BLDG	Private	Critical Community and Emergency Facilities	Community Centers	Moderate	Moderate	Moderate	Moderate	High	High
28	27	MICANOPY CEMETERY	Private	Natural, Cultural, and	Historical and Cultural Assets	Moderate	Moderate	Moderate	Moderate	Moderate	Moderate



# Adaptation Plan (cont'd)

Priority	Asset ID	Name	Owner	Asset Class	Asset Type	Current 100-Year	Near 100-Year	Far 100-Year	Current 500-Year	Near 500-Year	Far 500-Year
				Historical Resources							
29	127	SE Tuscawilla Rd	County	Transportation and Evacuation Routes	Major Roadways	Moderate	High	High	High	High	High
30	177	US Hwy 441	Government Agency	Transportation and Evacuation Routes	Evacuation Routes	Moderate	Moderate	Moderate	Moderate	Moderate	Moderate
31	168	US Hwy 441	Government Agency	Transportation and Evacuation Routes	Evacuation Routes	Moderate	Moderate	Moderate	Moderate	Moderate	Moderate
32	3	ALACHUA COUNTY FD ST 26 SUBSTATION - BLDG	Municipality	Critical Community and Emergency Facilities	Fire Stations	Minimal	Minimal	Minimal	Minimal	Minimal	Minimal
33	18	MICANOPY WATER SYSTEM - BLDG 1	Municipality	Critical Infrastructure	Drinking Water Facilities	Minimal	Minimal	Minimal	Minimal	Moderate	Moderate
34	4	MICANOPY BALL PARK - BLDG 1	Municipality	Natural, Cultural, and Historical Resources	Parks	Minimal	Minimal	Minimal	Minimal	Minimal	Minimal
35	4	MICANOPY BALL PARK - BLDG 2	Municipality	Natural, Cultural, and Historical Resources	Parks	Minimal	Minimal	Minimal	Minimal	Minimal	Minimal



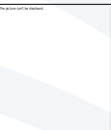
# Adaptation Plan (cont'd)

Priority	Asset ID	Name	Owner	Asset Class	Asset Type	Current 100-Year	Near 100-Year	Far 100-Year	Current 500-Year	Near 500-Year	Far 500-Year
36	25	MICANOPY HISTORICAL SOCIETY MUSEUM - BLDG 1	Municipality	Natural, Cultural, and Historical Resources	Historical and Cultural Assets	Minimal	Minimal	Minimal	Minimal	Low	Low
37	25	MICANOPY HISTORICAL SOCIETY MUSEUM - BLDG 3	Municipality	Natural, Cultural, and Historical Resources	Historical and Cultural Assets	Minimal	Minimal	Minimal	Minimal	Minimal	Minimal
38	178	US Hwy 441	Government Agency	Transportation and Evacuation Routes	Evacuation Routes	Extreme	Extreme	Extreme	Extreme	Extreme	Extreme
39	181	US Hwy 441	Government Agency	Transportation and Evacuation Routes	Evacuation Routes	Extreme	Extreme	Extreme	Extreme	Extreme	Extreme
40	129	SE Tuscawilla Rd	County	Transportation and Evacuation Routes	Major Roadways	Moderate	Moderate	Moderate	Moderate	Moderate	Moderate
41	192	NE 1st St	Municipality	Transportation and Evacuation Routes	Major Roadways	Moderate	Moderate	Moderate	Moderate	High	High
42	130	SE Tuscawilla Rd	County	Transportation and Evacuation Routes	Major Roadways	Moderate	Moderate	Moderate	Moderate	High	High
43	128	SE Tuscawilla Rd	County	Transportation and Evacuation Routes	Major Roadways	Minimal	Moderate	Moderate	Minimal	Moderate	Moderate



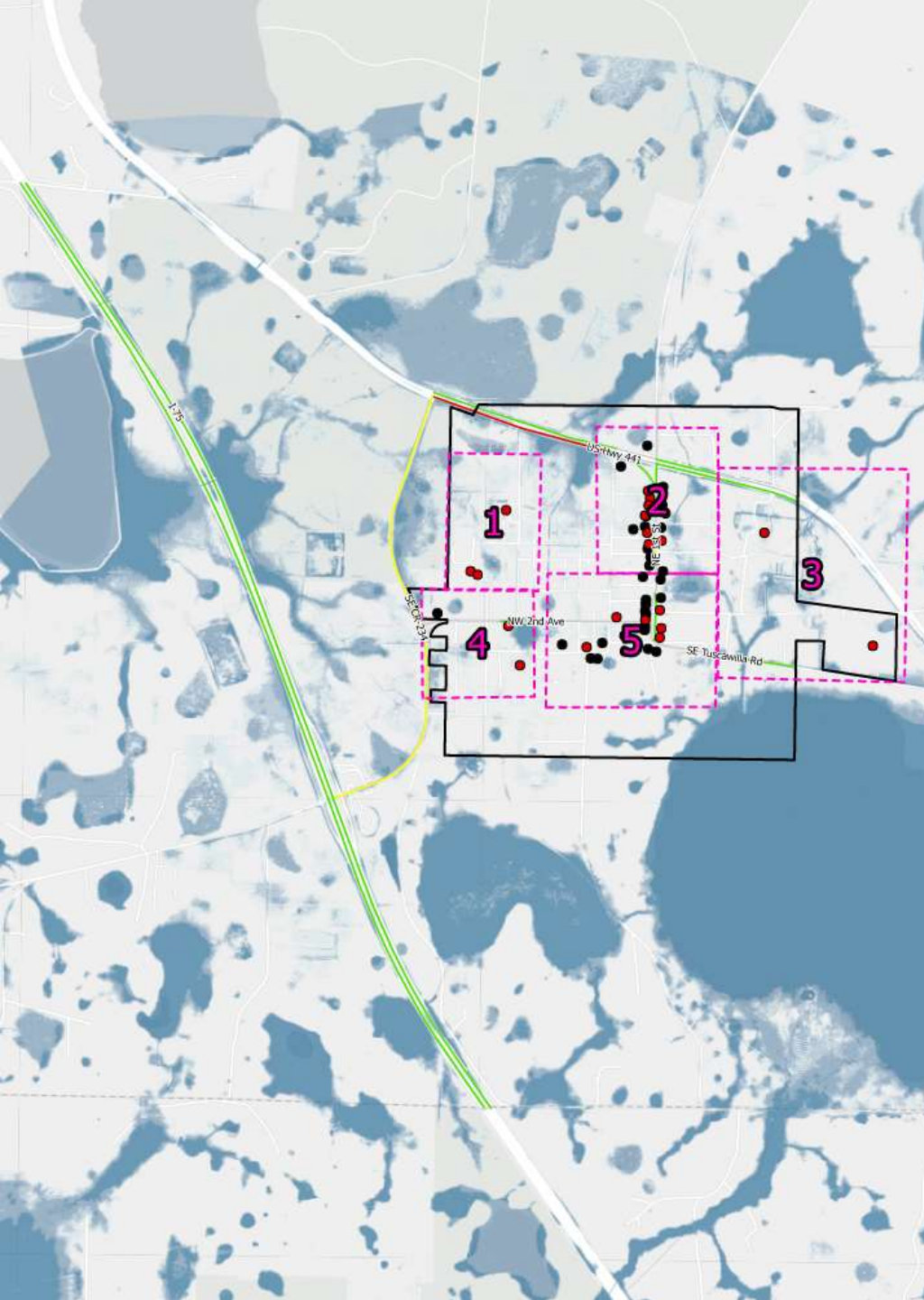
# Adaptation Plan (cont'd)

Priority	Asset ID	Name	Owner	Asset Class	Asset Type	Current 100-Year	Near 100-Year	Far 100-Year	Current 500-Year	Near 500-Year	Far 500-Year
44	188	NE 1st St	Municipality	Transportation and Evacuation Routes	Major Roadways	Minimal	Moderate	Moderate	Minimal	Moderate	Moderate
45	125	SE Tuscawilla Rd	County	Transportation and Evacuation Routes	Major Roadways	Moderate	Moderate	Moderate	Moderate	Moderate	Moderate
46	31	O'Steen Brothers Inc - BLDG 5	Private	Critical Infrastructure	Solid and Hazardous Waste Facilities	Minimal	Minimal	Minimal	Minimal	Moderate	Moderate
47	176	US Hwy 441	Government Agency	Transportation and Evacuation Routes	Evacuation Routes	Moderate	High	High	High	High	High
48	198	I-75	Government Agency	Transportation and Evacuation Routes	Evacuation Routes	Moderate	Moderate	Moderate	Moderate	Moderate	Moderate
49	175	US Hwy 441	Government Agency	Transportation and Evacuation Routes	Evacuation Routes	Moderate	Moderate	Moderate	High	Extreme	Extreme
50	197	I-75	Government Agency	Transportation and Evacuation Routes	Evacuation Routes	Moderate	Moderate	Moderate	Moderate	Moderate	Moderate
51	196	I-75	Government Agency	Transportation and Evacuation Routes	Evacuation Routes	Moderate	Moderate	Moderate	Moderate	Moderate	Moderate
52	199	I-75	Government Agency	Transportation and Evacuation Routes	Evacuation Routes	Moderate	Moderate	Moderate	Moderate	Moderate	Moderate



# Public Input





# Micanopy Final Adaptation Plan

Amanda C. Boone, PE

June 9, 2026

# Project Roadmap

## Current Status



Draft Vulnerability Assessment Report & Adaptation Plan completed. Presentation for acceptance consideration.

## Near-Term Actions



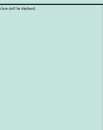
- Finalization & Acceptance of Report
- LMS coordination
- Submittal to FDEP

## Future Implementation



Funding Application deadline: September 1<sup>st</sup>

Do you accept the  
Vulnerability Assessment and  
Adaptation Plan?



Thank you!

