



# PARKS & RECREATION COMMISSION

## SPECIAL MEETING • MINUTES

City Hall Council Chambers, 33 East Broadway Avenue, Meridian, Idaho  
Wednesday, October 16, 2024 • 5:30 p.m.

*The Meridian Parks & Recreation Commission is a volunteer citizens' group that is created and empowered to advise the City on issues relating to park facilities and recreation programs of the City. Their mission is to gather input from staff and other qualified personnel on issues relating to the creation and design of public parks and open spaces; to listen to public input; and to provide advice and recommendations on parks and recreation related matters to the Mayor and City Council.*

### Roll-Call Attendance

Commission Chair Mandi Roberts called the meeting to order at approximately 5:38 p.m. MPR Administrative Assistant II Rachel Myers took roll-call attendance as follows:

X Mandi Roberts, Chair  
X Jennifer Bobo  
O Jo Greer  
X Elle Hood  
X Brienne Sandow

X Dom Gelsomino, Vice Chair  
O Terry Dennington  
X Alan Helms  
X John Nesmith

Others present were: MPR Department staff—Parks and Recreation Director Steve Siddoway, Parks Superintendent Mike Barton, Recreation Manager Garrett White, Pathways Projects Manager Kim Warren, Marketing Coordinator Shelly Houston, Administrative Assistant II Rachel Myers, and Deputy City Attorney Emily Kane. Along with Lance Fish with ZGA Architects.

### Adoption of the Agenda

*Commission Vice Chair Dom Gelsomino entertained a motion to adopt the agenda as presented. Commissioner Alan Helms moved to approve the agenda. Commissioner Brienne Sandow seconded. All were in favor of the motion.*

### Approval of the Minutes

#### 1. August 14, 2024 Regular Meeting

##### September 11, 2024 Special Meeting – MPR Facilities Tour

*Commission Vice Chair Dom Gelsomino entertained a motion to adopt the minutes as presented. Commissioner John Nesmith moved to approve the minutes. Commissioner Alan Helms seconded. All were in favor of the motion.*

## Announcements

### 2. Upcoming Events – Shelly Houston, MPR Marketing Coordinator

- Meridian Art Party was lovely in Kleiner Park, first year in that location.
- Three different Concerts on Broadway. Smoke and heat affected the first two, third had great attendance.
- Upcoming events flyer (attached to these meeting minutes).
  - Trunk or Treat – located in City Hall Plaza and parking lot, along with Broadway on 10/24/2024. 80 decorated trunks will be handing out candy. Free to attend, we just ask that attendees consider bringing \$1 or a can food item per child to donate to Meridian Foodbank.
  - Veterans Day ceremony on November 11<sup>th</sup> at 11 am at Rock of Honor Veterans Memorial in Kleiner Park.
  - Christmas Parade is December 6<sup>th</sup> beginning at 7 pm. Please consider joining us on the float, families are invited as well. We would like an RSVP at the November meeting for the number joining please.
  - Children’s Winterland Festival is December 7<sup>th</sup> in Meridian Homecourt this year instead of Boys and Girls Club. Free to attend but encouraging donations for Meridian Foodbank.

#### Commission Feedback:

- **Mandi Roberts** – Are dogs allowed on parade float?  
*Yes, well-behaved dogs on leash are welcome.*
- **Alan Helms** – Who is going to be at the Veterans Day celebration? Would like to extend an invitation to a few veteran’s organizations he’s involved with.  
*Joint effort between our local American Legion, the VFW, and other local service organizations. Will last about 45 minutes. Likely with a prayer, pledge of allegiance, and featured speaker. Anyone’s welcome, it’s free to attend.*

### 3. MPR Commission Meeting Time – Steve Siddoway, MPR Director

- Discussing possibly moving the meeting time to 4 p.m. It would work better for John Nesmith’s schedule, and works for Jo Greer and Terry Dennington that were not able to attend tonight’s meeting. Works for staff and would get everyone home earlier.

#### Commission Feedback:

- **Alan Helms** – Has a flexible schedule, so okay with either time.
- **Dom Gelsomino** – either time works for him, usually done with work by 3.
- **Brienne Sandow** – there would be traffic benefits, so in support of the change.
- **Elle Hood** – school is out by 2:15 so would like the change for better traffic.
- **Jennifer Bobo** – it works just fine.
- **Mandi Roberts** – that’s unanimous then.  
*Will check with Emily to confirm if there’s any logistics needed to move meeting time to 4 p.m. and will change the time as soon as practical.*

## New Business

### 4. New Meridiam Community Center Schematic Plan – Garrett White, MPR Recreation Manager

- Garrett recognized Lance Fish with ZGA Architects in the audience. He and his team have been awesome to work with.
- Garrett shared community center plan via Power Point. Copies of the slides are attached to these meeting minutes.

#### Commission Feedback:

- **Alan Helms** – Do you have the capital estimate yet to build it?  
*Still working with Lance and his team on the costs.*  
I can see this being popular on the weekends.  
*We want to get it open as soon as possible with current staff and then expand from there. It will still be used in the evenings with access control like we do at our current community center or Bay 6.*
- **Mandi Roberts** – I wonder if another revenue generating possibility might be renting out spaces for outside groups, it seems like we have a lack of those type of facilities.  
*It was part of our vision in the early version years ago. The direction we received from Council at that time was not to try to be an event center.*  
Operational costs did not include staffing, right?  
*Correct, we are trying to open it with existing staff.*  
Can you go into more detail on how impact fees work?  
*The city collects impact fees based on all of the building permits that are pulled based on square footage. Our current balance is about 19 million dollars. That money is used both to build facilities and buy future land for facilities. In terms of order of magnitude, this project is in order of 15 million dollars. The rest of our current fund balance will be used to buy land in northwest Meridian.*

### 5. Future Parks – Steve Siddoway, MPR Director

- Steve shared a future parks presentation via PowerPoint. Copies of the slides are attached to these meeting minutes.

#### Commission Feedback:

- **Alan Helms** – On the HOA parks, are people allowed in those parks that don't live in the neighborhood?  
*They are private property; it's up to the subdivision.*
- **Mandi Roberts** – I think it's great to focus on this hybrid approach to continue to look for all the opportunities, but really serve the bigger needs through the regional parks as the first tier. I also think it's important to think of new unique opportunities that the community is lacking in.

### 6. MPR Facilities Tour Debrief – Steve Siddoway, MPR Director

- Our last meeting was the parks tour. We welcome any feedback on what you liked, or anything you would change for next year. This is an annual event that happens each September.

- After the tour Council President Cavaner suggested splitting the tour up to spread out the good news. In the spring we usually do a pathways tour, and the facilities tour in the fall. We may try to do a park tour opportunity in the spring instead if there aren't new pathways to see. If you have any wishes to go see something in more detail, we may work on it as a spring option.

Commission Feedback:

- **Dom Gelsomino** – I thought it was great. We covered the things that are important and it's always a good opportunity to reconnect.
- **Elle Hood** – I really liked going to Homecourt. We have talked about it so much, but I had no idea what it was.
- **Mandi Roberts** – I enjoy it as an opportunity to just connect with everyone that's on staff. We don't always see everyone unless they're giving their reports. Just to talk with people and learn about what they do every day and to be able to knowledgeably understand all the different facilities we have is important.

**Old Business ~ NONE**

**Workshop ~ NONE**

**7. Staff Reports**

**Steve Siddoway –**

- Busy time of year for us with the end of a fiscal year and start of the next.
- Internally we're doing performance evaluations for all staff.
- Mike and I attended the NRPA Conference last week and participated in some good sessions there. One that I particularly liked was on the loneliness epidemic and parks role in helping build connections.

**Mike Barton –**

- We have a crew out working on greening up the Hillsdale Park expansion and it will be finished this fall.
- Ten Mile Road medians that are north of the interstate are being redone. Roundabout landscaping at Locust Grove and Amity that is currently just rock will have irrigation and plants added to it.
- Ustick Road has two widening projects that are in the works. Ustick from Linder to Ten Mile, and then Ustick from Ten Mile to Black Cat. We'll do a design and a budget for that next fall and then go in and landscape that.
- Linder Road is in design for the overpass and Linder Road widening. There's medians and art, and landscaping on that project.
- The golf course has restroom projects. There are two sites for this year. Site A is across from the clubhouse and B is over by Black Cat on the number 9 tee. Site A is going to kick off in a week with foundation and utilities. The buildings are going to show up in January. Site B is more of a challenge since we have to grab sewer that is 22 feet deep. Black Cat Road will be closed for a couple of days for that. Sites C and D are in the works.

- We have a restroom at the trailhead that's going in that we are getting prices and Geotech on.

Commission Feedback:

- **Alan Helms** – Regarding the new restroom at hole 9, can you explain exactly where that's going in? I'm curious if it's close to homes there.  
*It's where if you putt on number 8 and go on the cart path to get to the number 9 tee, it's right there. Not close to the homes. It's centrally located, 20 feet from the pond's edge.*

**Garrett White –**

- Working on program fees across the board in the recreation side for golf, Homecourt, pool, to our programs in general.
- Fields & external events – Skyler has been working on FY25 summer schedule for all our parks. He has cornhole leagues going and there's a disc golf Halloween tournament at Kleiner Park.
- Pool – still being used by swim teams. Willow is starting to program in next year's schedule for summer for swim lessons and with swim teams. Looking to add an adult and baby class. Scheduling CPR and AED certification classes for all our Parks staff that need to be trained.
- Events – Working on Trunk-or-treat and Christmas parade.
- Sports – Today was the deadline for winter volleyball registrations. Coed is already full with a waitlist. Fall volleyball season is still going, and registrations are open for winter basketball. Holiday Classic Volleyball Tournament is planned to help raise money for Christmas gifts for Headstart families.
- Homecourt – busy all day long with pickleball, basketball, and volleyball. Last year in just day passes we had 48,000 daily check-ins throughout the approximate 340 days Homecourt was open. That doesn't include the memberships we offer, or the AAU teams that use the facility in the evenings. Replacing the HVAC units soon that they budgeted for to help with the condensation issues.

Commission Feedback:

- **Alan Helms** – For Lakeview, are they going to increase the rates there?  
*Steve will be presenting at Council next Tuesday the fee increases for discussion. We compared to 10 other comparable courses and used the mid-point to base our new prices on. We've heard those other courses may also be increasing their prices in the spring. Our costs have gone up about 4%.*
- **Mandi Roberts** – Hearing about the other volleyball teams that got turned away makes me sad. As we think about increasing our parks staff, there will be continued demand for recreational spaces too.  
*We are looking for more gym space and working with the schools. We value the recreational side of our programs as well.*

**Kim Warren –**

- The Locust Grove sidewalks between McMillan and Chinden are pretty well complete concrete wise. Last week the contractor was working to get irrigation repaired before water went off. We'll continue to replace trees into the spring.

- The pathway master plan update has been on hold for a couple of weeks. We had some internal questions about maintenance and some of the long-term implications of some of the things we want to do. We will be meeting with our consultant tomorrow to make sure we are on course with what's realistic.
- Rail with Trail is just west of city hall. Met with Community Development department on the project to get their input. It is on schedule for us to bid it for irrigation work in fall 2025.
- We have a new project west of McDermott Road for the pathway that we are going to build that is going to go under State Highway 16. We have contacted a civil engineering consultant to get a scope and fee for that work so we can design over the winter and bid in the spring. It's a missing gap that will connect to add miles along the Fivemile Creek.

**Next meeting November 13, 2024 at 5:30 p.m.**

**8. Future Meeting Topics – Mandi Roberts**

- **Steve Siddoway** – Focusing on number 8 of the commission goals, if anybody knows of another group that you'd like to hear from, let us know.

**Adjourn**

*Commission Chair Mandi Roberts entertained a motion to adjourn the meeting. Commission Chair Dom Gelsomino moved to adjourn. Commissioner Alan Helms seconded. The vote was unanimous and in favor of the motion.*

There being no further business, the meeting adjourned at approximately 6:56 p.m.

APPROVED:

\_\_\_\_\_  
MANDI ROBERTS, CHAIR

\_\_\_\_\_/\_\_\_\_\_/\_\_\_\_\_  
DATE

\_\_\_\_\_  
DOM GELSOMINO, VICE CHAIR

/sdh

Attachments:

- 1) Flyer: Upcoming Events, and Save the Date – Shelly Houston (2 pages)
- 2) PowerPoint: Meridian Community Center – Garrett White (5 pages)
- 3) PowerPoint: Future Parks Presentation – Steve Siddoway (9 pages)

MERIDIAN PARKS & RECREATION



# TRUNK OR TREAT



Thursday October 24th  
6:00 - 9:00 pm  
City Hall Plaza



PEPSICO



Visit [meridiancity.org/trunkortreat](http://meridiancity.org/trunkortreat) or call (208) 888-3579 for details.



*Join us as we honor  
all who served...*

# VETERANS DAY CELEBRATION



MONDAY, NOVEMBER 11, 2024

11:00 AM

ROCK OF HONOR VETERANS MEMORIAL  
KLEINER PARK - MERIDIAN, IDAHO  
(1900 N. RECORDS AVENUE)

# CHRISTMAS PARADE

FRI  
6  
DEC  
7 PM

FRI  
6  
DEC  
7 PM



*"So Bright You Gotta Wear Shades"*  
**DOWNTOWN MERIDIAN**

WINTERLIGHTS PARADE TREE LIGHTING FREE HOT COCOA FOOD TRUCKS SANTA



FOR MORE INFORMATION VISIT: [MERIDIANCITY.ORG](http://MERIDIANCITY.ORG)



**SAVE THE DATE**



You and Your Family Members  
are invited to ride on the  
Meridian Parks and Recreation Commission float  
during this year's Winter Lights Parade!

**Friday, December 6, Storey Park**

**The parade begins moving at 6:50 pm**

**Note:** You may gather inside the Meridian Pool office in Storey Park prior to boarding your float if you wish. We recommend that you arrive by 6:30 pm if not sooner.

Please give yourself ample time to navigate traffic, find a parking spot, and locate your float.

---

*We will provide you with your float entry number and the name and cell phone number of your parade host when we get closer to the event.*



# Meridian Community Center

October 22, 2024

1

## Vision?

### Meridian Community Center May 2024 Draft

**The Vision:**  
The new Meridian Community Center will be the City's hub for community education programs. We will offer classes, camps, and activities for children, teens, adults, seniors, and families. Multi-purpose rooms of various sizes will host activities and City-sponsored community events year-round. A gym space will be multipurpose for sports, as well as a variety of classes and other activities.

**Presence & Materials:**  
Materials should be quality, long-lasting, durable, and low maintenance. The Community Center should have a presence at ground level that invites people into an attractive, inviting space.

**Community Center Uses:**  
Use space for the Community Center will include multiple classes and camps for all ages, activity spaces, smaller performances, fitness/walkways. Most uses will be scheduled and reserved (i.e., classes, weekend camps, meetings, city sports leagues); others may be drop-in (i.e., hobby). The facility will need to accommodate multiple uses groups simultaneously. Building security (i.e., badge access) needs to be considered as the building may be used when not staffed.

**Size:**  
The approximate size of the Community Center is 17,000 - 20,000 square feet. A maximum of 22,827 square feet is eligible for park impact fees.

**Community Center Definition:**  
Vision #1 is: The Community Center will provide many new and expanded programs and services, with a focus on community education. The new Community Center will be a series of multi-use rooms for classes, camps, meetings, and City-sponsored events as described above.

What it is not: It is not intended as a place for private events, weddings, or parties. This function will be left to the private sector. It is not a performing arts center, unless our community needs a future performing arts center. It will be a separate project from this one. It is not a recreation center, which typically includes weights and cardio equipment, and/or an indoor pool. We intend to work with the YMCA for future partnerships to fill this need.

**Building Program**  
Following is the draft program for the Community Center, subject to refinement through the design process:

- 1 Large Community Room / Multi-purpose Sports and Activity Space +/- 6,000 sf
  - For large gatherings and city events
  - Multi-Purpose gym flooring (not wood flooring)
  - Divisible to accommodate community education classes
  - Stage (like an elementary school gym area)
  - Overflow for City-league sports
  - Storage
- 3 Multi-Purpose Classrooms +/- 500 sf
  - For classes, meetings, etc.
  - Sink and cabinets in each
  - Storage
- 1 Conference Room +/- 300-400 sf
  - For a variety of community organization meetings
- Arts & Crafts Room +/- 1,500 sf
  - Floor drains
  - Space for a small kiln
  - Storage
- Fitness/Yoga Room +/- 1,500 sf
  - For a variety of exercise classes
- Demonstration Kitchen Classroom +/- 1,100 sf
  - Catering kitchen for warming/boiling, and demonstrations
- Office/Workspaces
  - Reception front counter
  - 1 large open office area w/ 3-5 workstations +/- 700 sf
  - 1 walk-in office for Facility Manager
  - Counter Space and Supply Storage
  - Break Area w/ sink and cabinets
- Lobby / Drop-in Area
  - Seating Area & Tables
  - Area for Foot/Hand/Wiping Ping tables
- Restrooms
  - Men's & Women's
  - 2 Family Restrooms with seating for changing area and showers
  - No separate locker rooms
- Storage
  - Lots of, and needs TBD during design development
  - Decentralize, not all in one location.
- Mechanical Room
  - Washer and Dryer hookups
  - Fridge
  - IT
  - HVAC

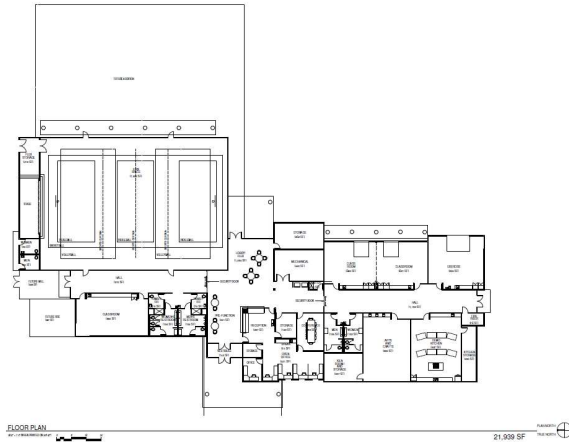
- Outdoor Play Area / Event Lawn
  - Patio Area
  - Connected to Community Room
  - Plan Structure
  - East Parking to connect with existing park
- Parking & Delivery
  - 500+ spaces for the community center
  - Accessible stalls, as required by code
  - Drop-off/take-up parking area
  - Delivery area
  - Note: Additional parking will be needed adjacent other park uses (i.e. dog park), plus another 220+ spaces for MPO/Actional Park event parking
  - Note: Create an access from the north parking area to the existing park maintenance shop. Create a cross-access connection from the south parking area to the undeveloped lot to the south.



2

**Community Center Floor Plan Key Features**

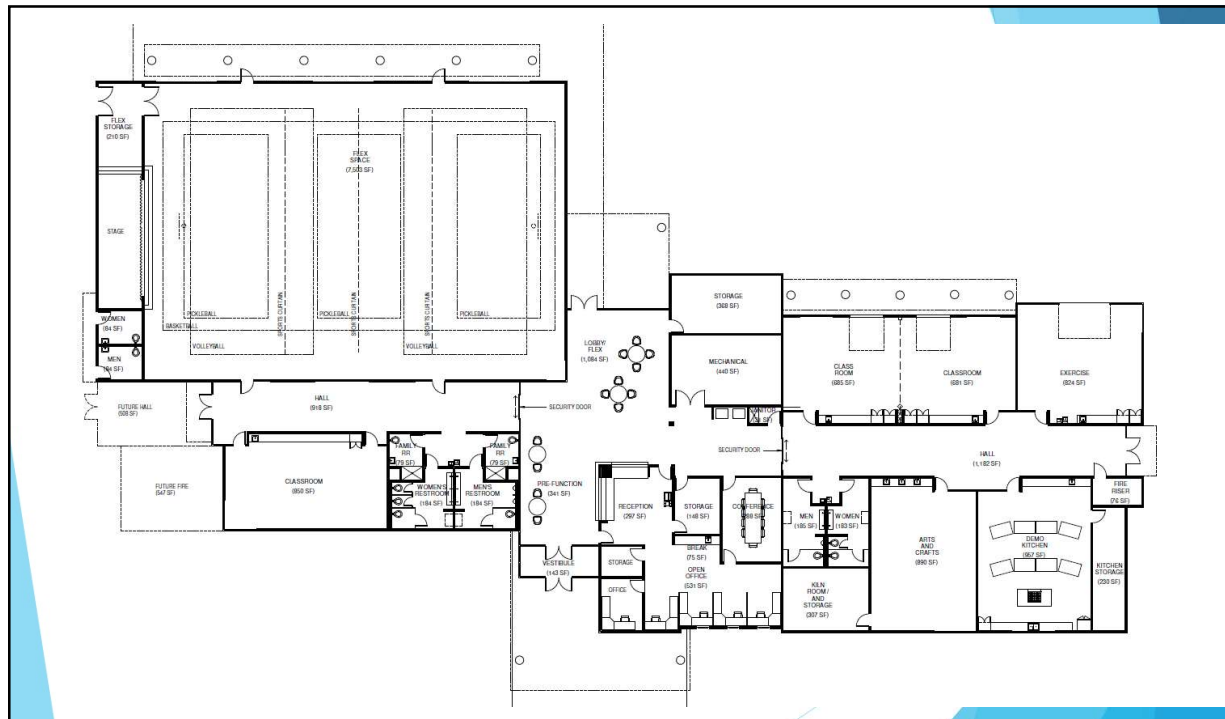
- Flex Space with Stage
- Access Control
- Possible Fire Prevention Office Location
- Six Classrooms
- Office and Storage Space



CITY OF MERIDIAN  
MERIDIAN COMMUNITY CENTER  
SETTLERS PARK SITE



3



4

**Proposed Operational Budget**

- \$5.00-\$6.00 per square foot (in today’s dollars)
- 22,000 sf +/-
- \$110,000 - \$140,000 Operational Costs
- Note: Settlers Park expansion will have similar operational costs

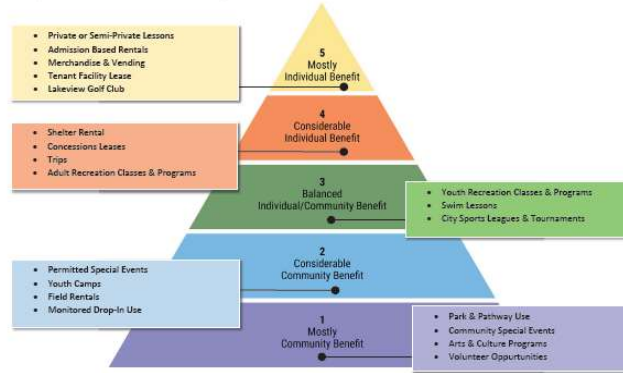
**Sources of Revenue to offset operational costs**

- Community Education Classes (70-30 split / \$63K in FY24)
- Adult Sports
- Summer Camp Programs
- Court Rentals

Table 2: Cost Recovery Tier Targets

Pyramid Tier	Meridian Cost Recovery Methods	Department FY21 Cost Recovery	Range Minimum	Range Maximum
T5	Full Cost Recovery	84%	100%	100%
T4	Majority Cost Recovery	92%	80%	99%
T3	Partial Cost Recovery	90%	50%	79%
T2	Minimal Cost Recovery	52%	1%	49%
T1	No Cost Recovery	1%	0%	0%

Figure 1: Meridian Consensus Pyramid



5

**Staffing Plan (Monday through Friday)**

**Existing Staffing to Community Center**

- (1) Recreation Coordinator - Promoted to Facility Manager
- (1) Seasonal Classes & Camps Coordinator promoted to Full-Time
- Additional existing staff will move over to assist with daytime coverage.

**Access Controlled Evening and Weekend Uses**

- Community Education Classes with Instructors
- Flex Space Use for Community Education Classes or Sports Leagues.

**Future CFP Positions**

- (3) Full-Time Site Supervisors



6

### Proposed Timeline

Summer-Fall 2024:

- Schematic Design
- Parks & Recreation Commission Meeting in October, 16th
- Council Check In October 22nd
- Public Outreach in November Finalize Programming
- Continue to develop an Operational Cost Pro Forma

Winter 2024 - Spring 2025

- Design Development / Schematic Design
- Public Outreach in February/March
- Parks & Recreation Commission Meeting in February/March
- Council Check In - February/March

2025 Bid/Obligate Funds

- Council Check In - Present Construction Contract

2026 Construction

2027 Complete Construction

Community Center Open in FY28

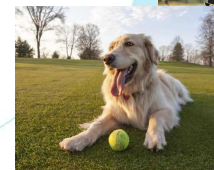
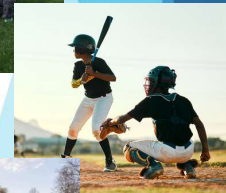
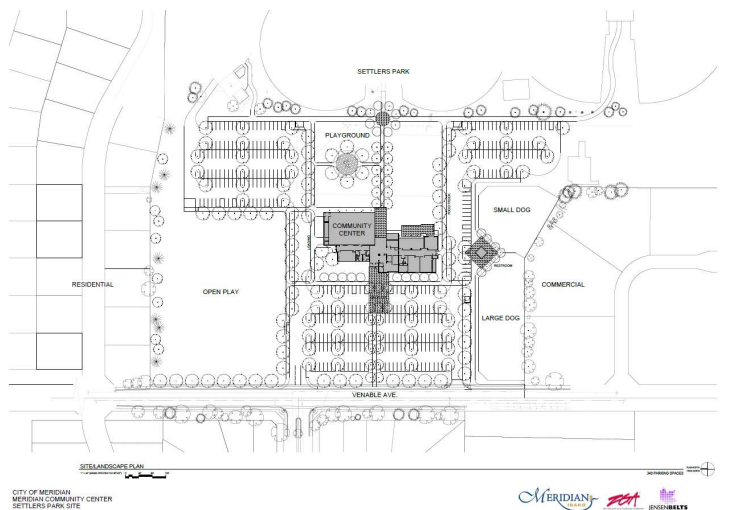


- ▶ 11.365 Acres
- ▶ Adjacent to Settlers Park
- ▶ For Community Center and park expansion, including additional parking
- ▶ Purchased from West Ada School District

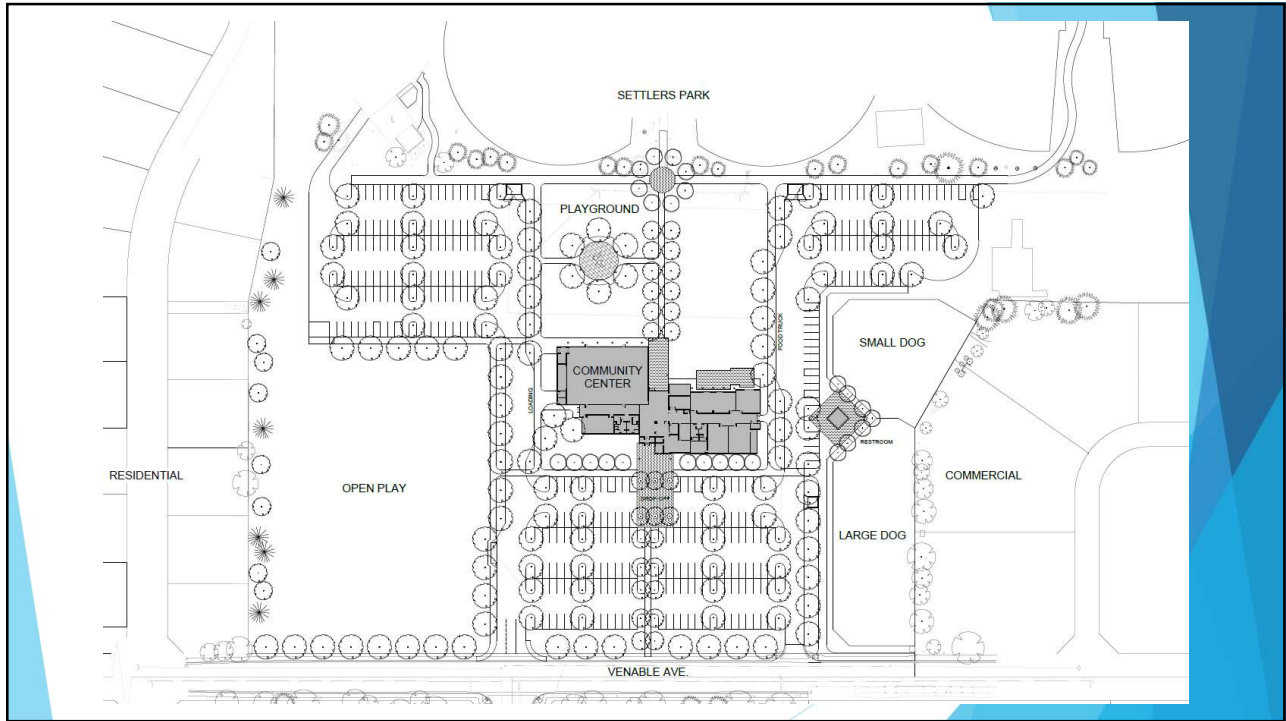
7

### Park Site Design Key Features

- 340 parking spaces
- Large and Small Dog Park
- Open Play Green Space
- Community Center
- Pathway expansion



8



9



10



# Meridian Parks & Recreation Future Parks Presentation



WWW.MERIDIANCITY.ORG

#MYMERIDIAN

1

# Meridian Parks & Recreation Future Parks Presentation

## What do we have today?

- 3 Regional Parks
- 6 Community Parks
- 9 Neighborhood Parks
  
- 4 Special Use Parks
- 2 Sports Parks (Partnerships)

### Developed Parks:

#### Regional Parks:

- ⇒ Discovery Park 63.190
- ⇒ Julius M. Kleiner Park 58.197
- ⇒ Settlers Park 57.737

#### Community Parks:

- ⇒ Bear Creek Park 18.818
- ⇒ Fuller Park 23.200
- ⇒ Heroes Park 30.126
- ⇒ Hillsdale Park 9.536
- ⇒ Storey Park & Bark Park 17.851
- ⇒ Tully Park 18.675

#### Neighborhood Parks:

- ⇒ 8th Street Park 2.783
- ⇒ Centennial Park 0.400
- ⇒ Champion Park 5.982
- ⇒ Chateau Park 6.700
- ⇒ Gordon Harris Park 11.126
- ⇒ Keith Bird Legacy Park 7.499
- ⇒ Renaissance Park 6.527
- ⇒ Reta Huskey Park 8.920
- ⇒ Seasons Park 7.131

#### Special Use Parks:

- ⇒ City Hall Plaza 0.900
- ⇒ Fire Station #4 Park 0.591
- ⇒ Generations Plaza 0.240
- ⇒ Tammy Street Park 0.570

#### Sports Parks:

- ⇒ Heritage MS Ball Fields 5.611¢
- ⇒ Jabil Soccer Fields 8.400¢

Total Developed Park Acreage: 370.710

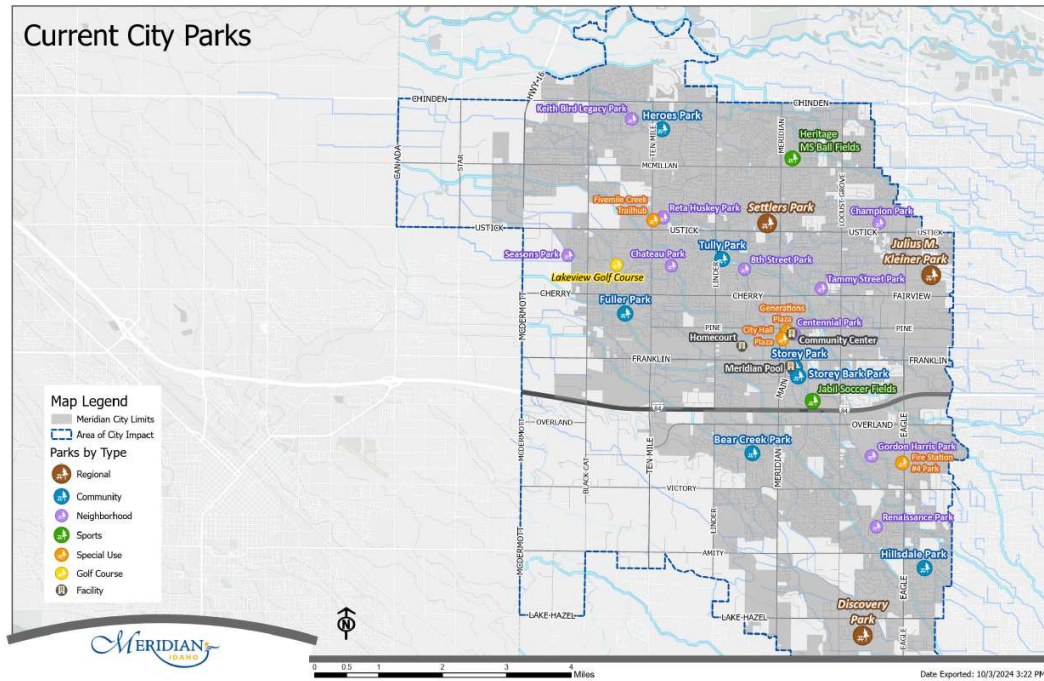


WWW.MERIDIANCITY.ORG

#MYMERIDIAN

2

### Current City Parks



Date Exported: 10/3/2024 3:22 PM

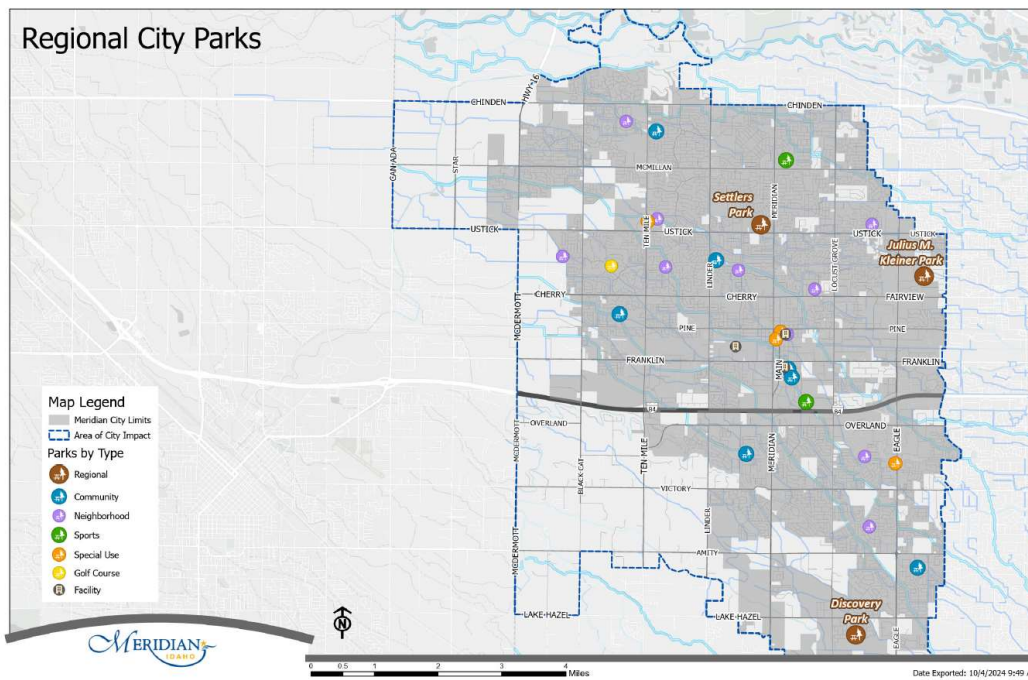


WWW.MERIDIANCITY.ORG

#MYMERIDIAN

3

### Regional City Parks



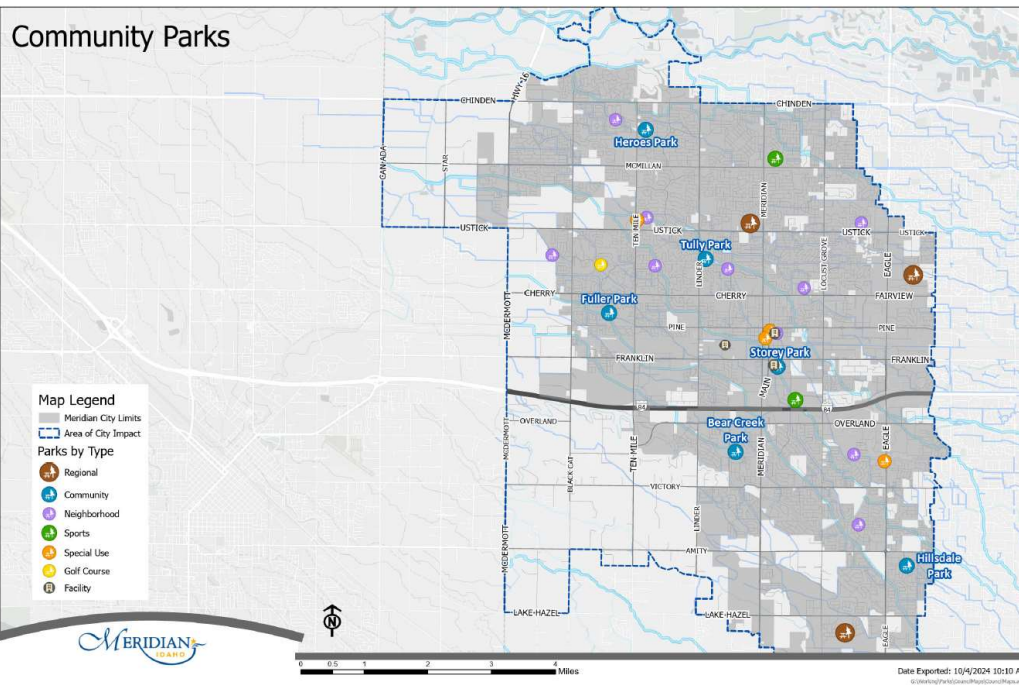
Date Exported: 10/4/2024 9:49 AM



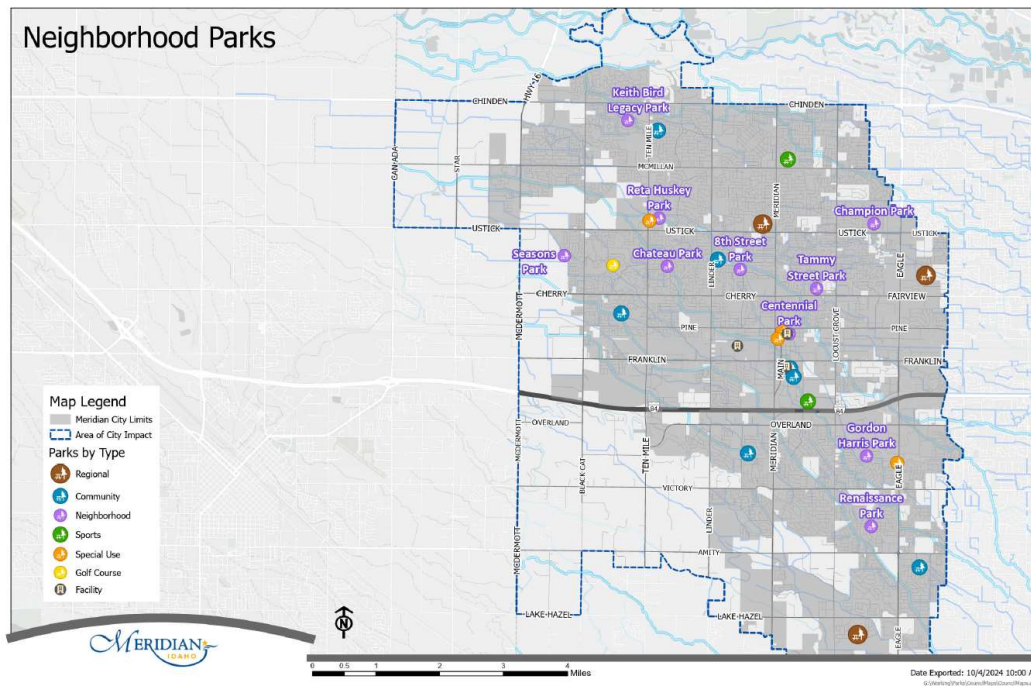
WWW.MERIDIANCITY.ORG

#MYMERIDIAN

4

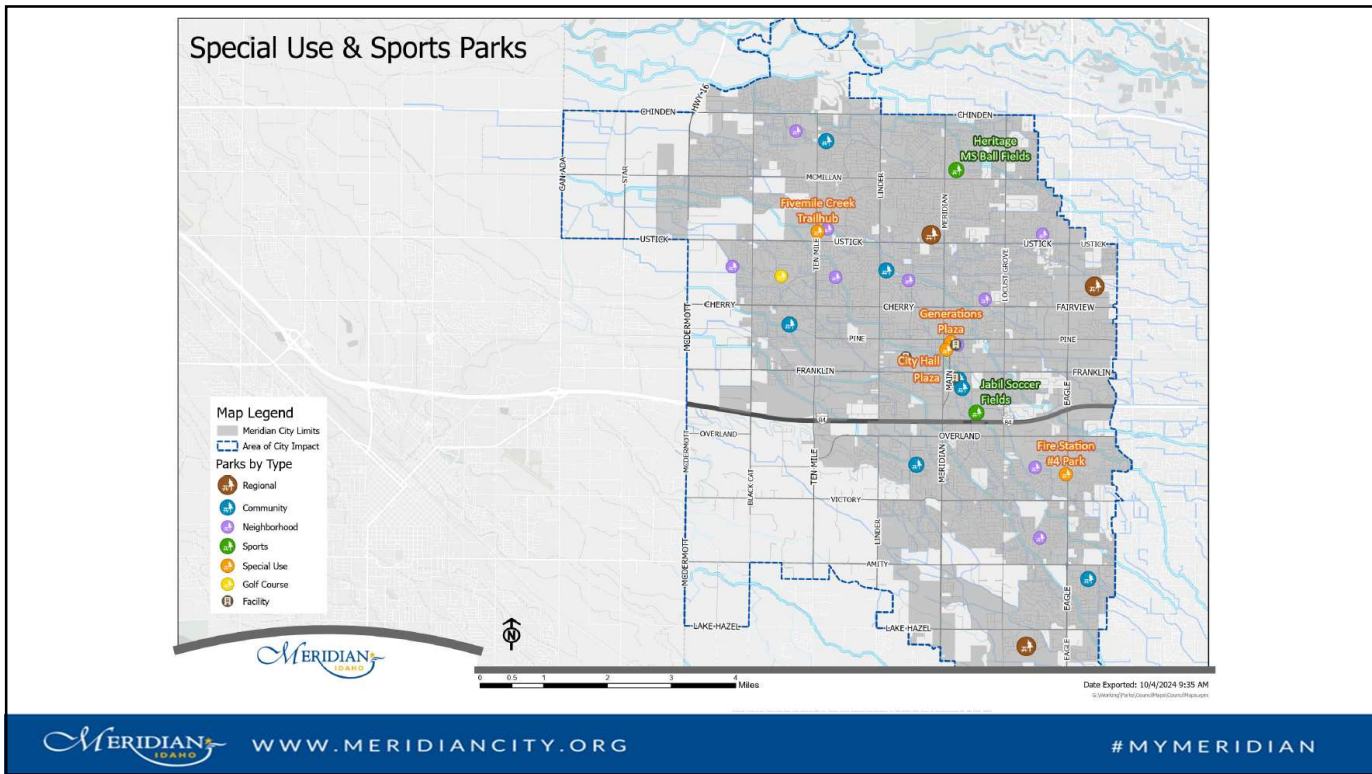


5

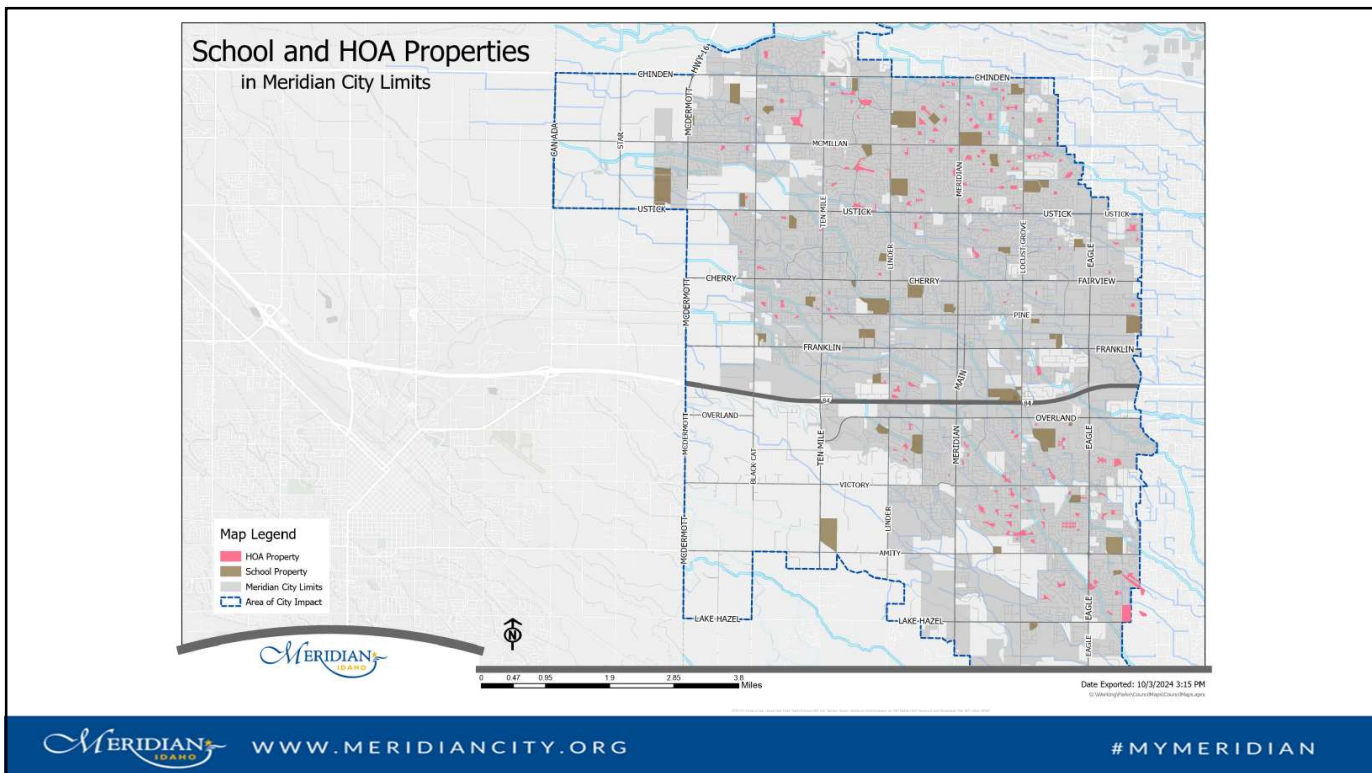


6

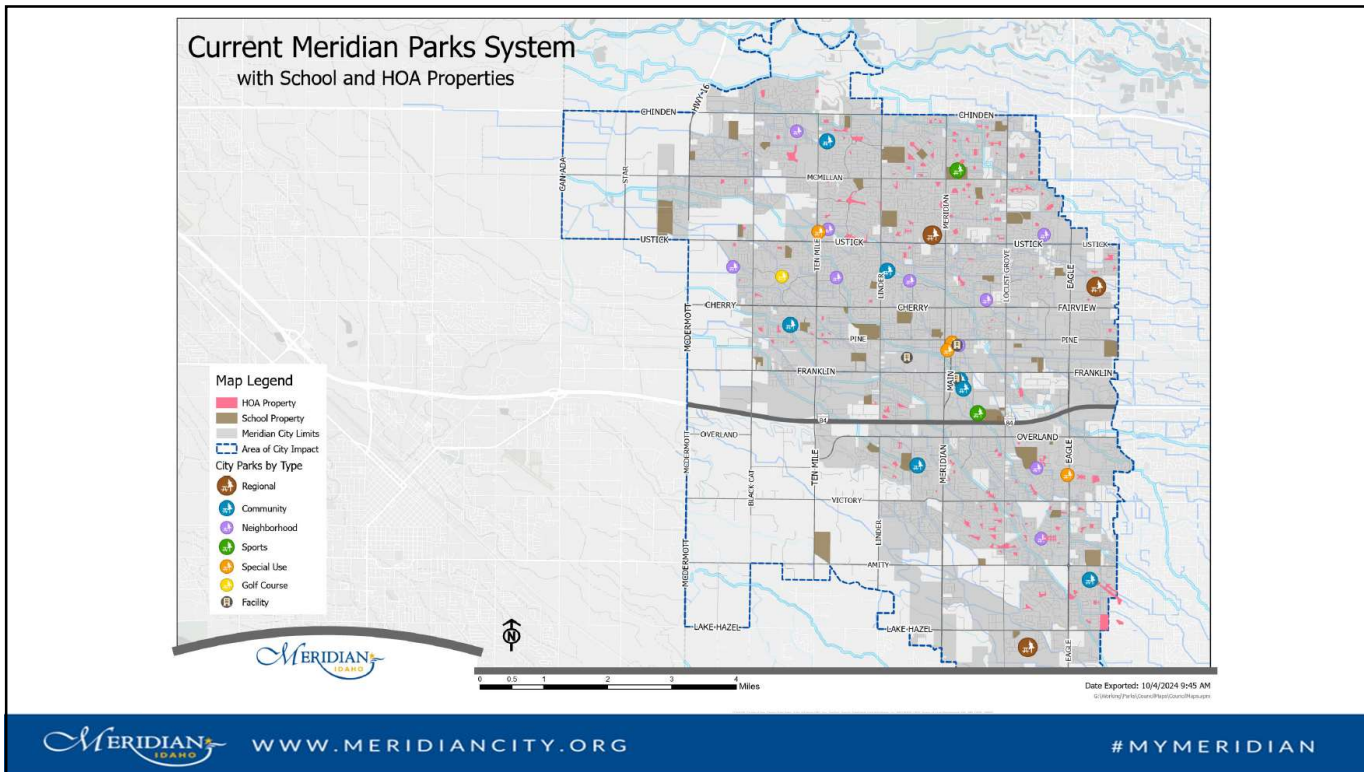




7



8



9

# Meridian Parks & Recreation Future Parks Presentation

**How Many Acres of Park Land Can we Improve with Park Impact Fees Through 2032?**

**2023-2032 Increase 32,654 87.0**

Figure PR1: Improvements Standard and Need for Improved Acres

Location	Improved Acres
Discovery Park	83.38
Lulu M. Vickers Park	18.20
Settlers Park	37.74
Diocese Park	30.33
Palmer Park	23.20
East Creek Park	18.63
Tracy Park	18.68
Stoney Park & Bark Park	17.85
Compton Home Park	13.33
Hillside Park	9.54
Delta members Park	8.00
Blackhawk Park	6.00

Location	Improved Acres
Meridian City Park	2.50
20th Street Park	2.20
Meadow Pond Park	1.33
City Hall Plaza	0.90
Greenwood Park	0.40
Generations Place	0.24
Total	170.83

Allocation Factors for Parks	Value
Improvements Cost per Acre	\$41,000
Residential Proportional Share	100%
Service Units	326,540
Population in 2032	39,245

Year	Population	Improved Acres	Park Improvements Needed
Base	2022		
Year 1	2023	130,245	370.8
Year 2	2024	145,000	386.2
Year 3	2025	161,000	402.2
Year 4	2026	178,100	411.0
Year 5	2027	197,000	429.8
Year 10	2032	371,900	457.8
2023-2032 Increase		32,654	87.0

Overall Cost of Parks = \$8570,000

DP Guthrie LLC

5

10

# Meridian Parks & Recreation Future Parks Presentation

**How Many Acres of Park Land  
Can we Purchase with  
Park Impact Fees  
Through 2032?**

9/16/22 MERIDIAN DEVELOPMENT IMPACT FEES REPORT

Figure PR2: Land Standard and Need for Park Sites

Park Site	Land Area (acres)
Discovery Park	27.49
Julius M. Kleiner Park	58.20
Settlers Park	57.74
Vera Regional Park	47.48
Hereses Park	30.11
Huber Park	23.20
Bear Creek Park	18.80
Tuffy Park	18.68
Stoney Park & Bark Park	17.85
George Harris Park	11.13
Hillside Park	9.54
Ben Halsey Park	8.92
<b>Total</b>	<b>418.51</b>

Park Site	Land Area (acres)
Meridian Pool Park	1.31
City Hall Plaza	0.90
Government Park	0.40
Generations Plaza	0.24
<b>Total</b>	<b>2.85</b>

Allocation Factor for Park Land	
Land Cost per Acre	\$150,000
Residential Proportionate Share	100%
Services Units	333,470
Population in 2022	133,470

Infrastructure Standards for Park Land	
Residential (per person)	Park Sites (acres)
	0.00311

Year	Population	Park Sites (acres)	
Base	2022	133,470	418.5
Year 1	2023	139,249	436.6
Year 2	2024	145,028	454.7
Year 3	2025	150,806	472.9
Year 4	2026	156,585	491.0
Year 5	2027	162,364	509.2
Year 10	2032	172,983	539.0
2022-2032 Increase		38,433	120.5
Growth Cost of additional Park Land =>			\$18,079,000

**2022-2032 Increase                      38,433                      120.5**

DP Guthrie LLC

7



WWW.MERIDIANCITY.ORG

#MYMERIDIAN

11

# Meridian Parks & Recreation Future Parks Presentation

- Current Plan for Future Parks (CFP)**

**Settlers Park Expansion (11 ac.)**

2025 Design  
2026-27 Construction

**Graycliff Sub Area Park (11 ac.)**

2026 Design  
2027 Construction

**Fields District Area Park (40 +/- ac.)**

2027 Design  
2028 Construction

**Discovery Park Phase III (12 ac)**

2028 Design  
2029 Construction

**Margaret Aldape Park (13+/- Dev.)**

2030 Design      **(70 +/- Total)**  
2031 Construction

**West Meridian Reg. Park (47 Ac)**

2032 Design  
2033 Construction

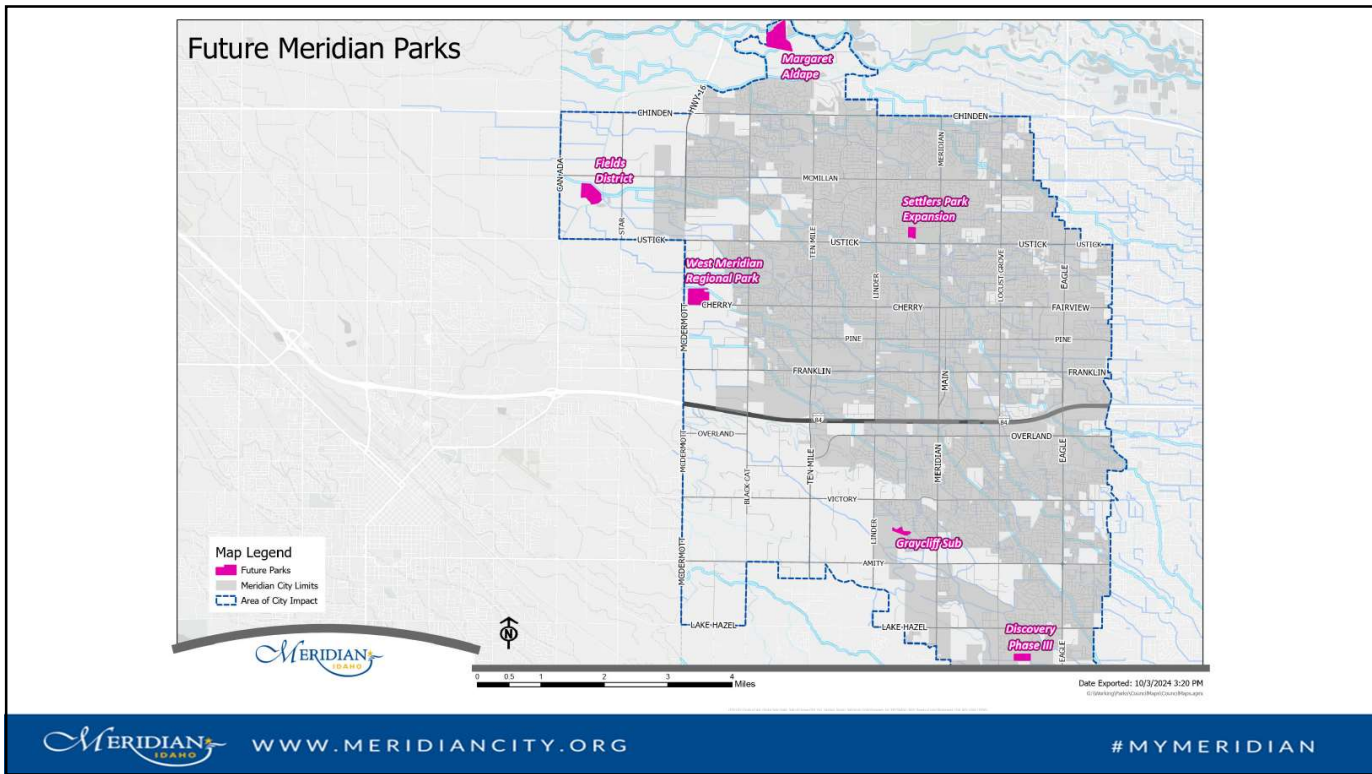
*Note: Subject to Change Annually based on CFP Balancing, Budget Process, etc.*



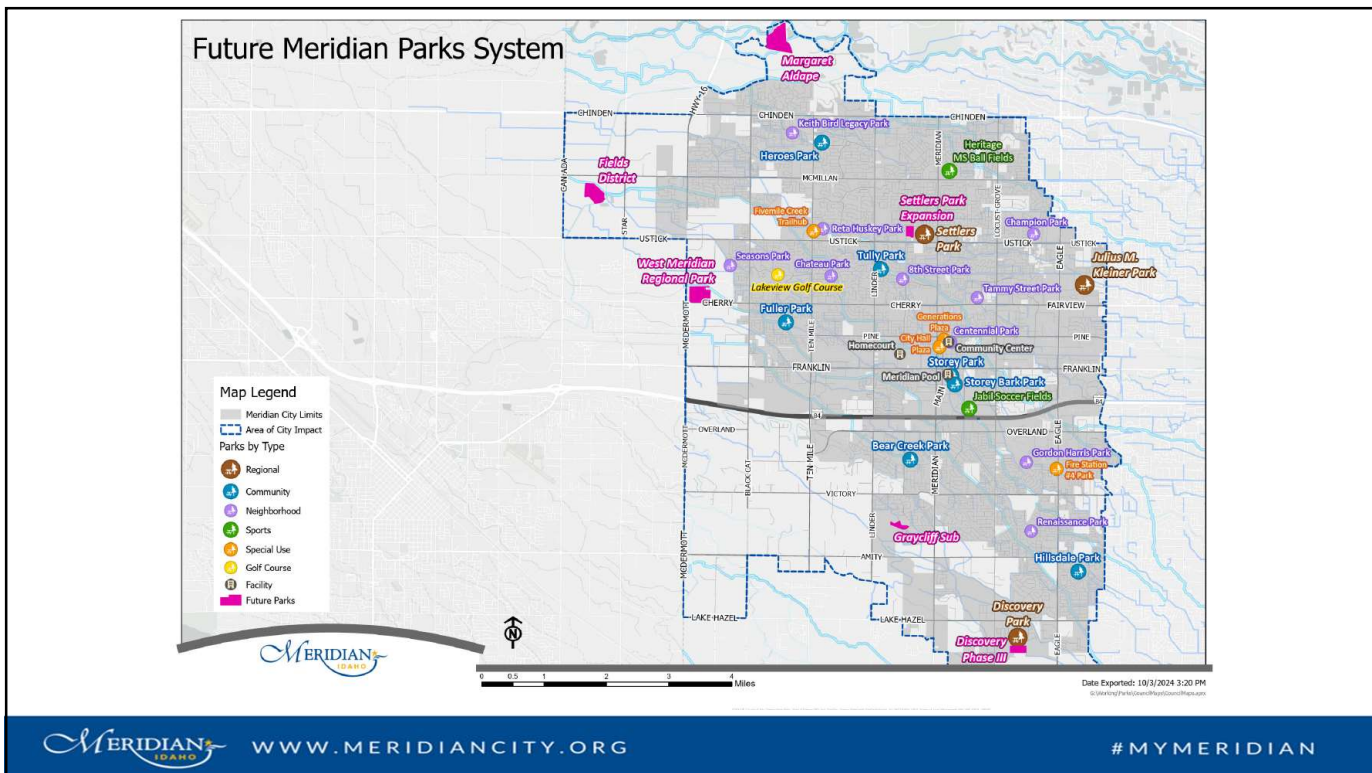
WWW.MERIDIANCITY.ORG

#MYMERIDIAN

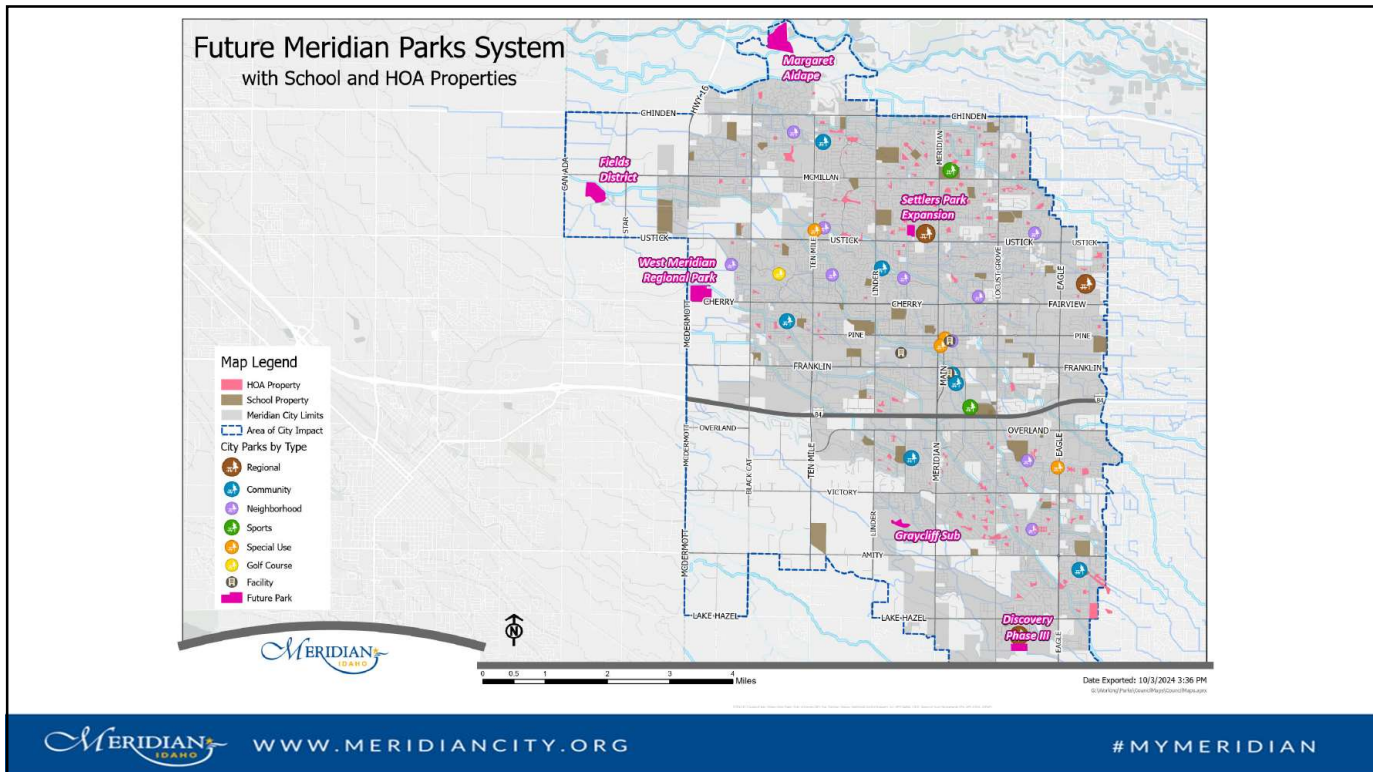
12



13



14



15

## Meridian Parks & Recreation Future Parks Presentation

- Discussion Topic
  - Does Council want the Parks Department to focus on community and regional (i.e. larger) park sizes and have the Subdivision/HOAs focus on the neighborhood (i.e. smaller) parks?
- OR
  - Does Council want the Parks Department to explore partnerships for parks of all sizes?

16

## Meridian Parks & Recreation Future Parks Presentation

- Recommendation
  - Hybrid: It makes sense to focus *primarily*, but not exclusively, on the community and regional parks. Also consider limited additional neighborhood parks where it makes strategic sense to do so for geographic distribution of public parks.



WWW.MERIDIANCITY.ORG

#MYMERIDIAN

17

## Meridian Parks & Recreation Future Parks Presentation

# Thank You



WWW.MERIDIANCITY.ORG

#MYMERIDIAN

18