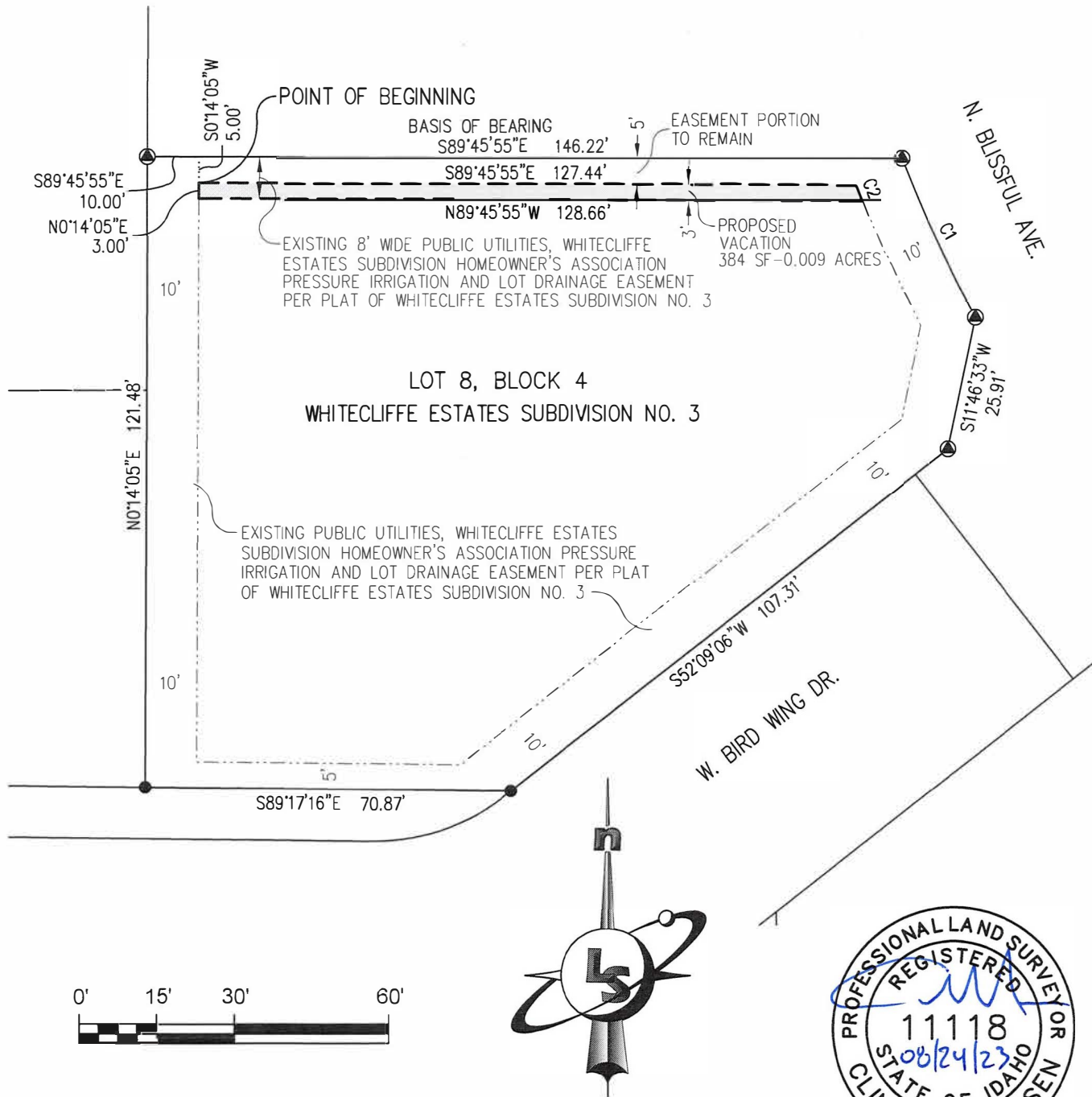


EXHIBIT B

EASEMENT VACATION

A PORTION OF A PUBLIC UTILITIES, WHITECLIFFE ESTATES SUBDIVISION
HOMEOWNER'S ASSOCIATION PRESSURE IRRIGATION AND LOT DRAINAGE EASEMENT
LOT 8, BLOCK 4, WHITECLIFFE ESTATES SUBDIVISION NO. 3
LOCATED IN THE NE ¼ OF THE NW ¼ OF SECTION 36, T.4N., R.1W., B.M.
CITY OF MERIDIAN, ADA COUNTY, IDAHO



CURVE TABLE

CURVE #	LENGTH	RADIUS	DELTA	BEARING	CHORD
C1	33.70'	260.00'	7°25'36"	S24°53'12"E	33.68'
C2	3.24'	270.00'	0°41'13"	S21°49'29"E	3.24'

LandSolutions
Land Surveying and Consulting

231 E. 5TH ST., STE. A
MERIDIAN, ID 83642
(208) 288-2040 (208) 288-2557 fax
www.landsolutions.biz

JOB NO. 18-13

