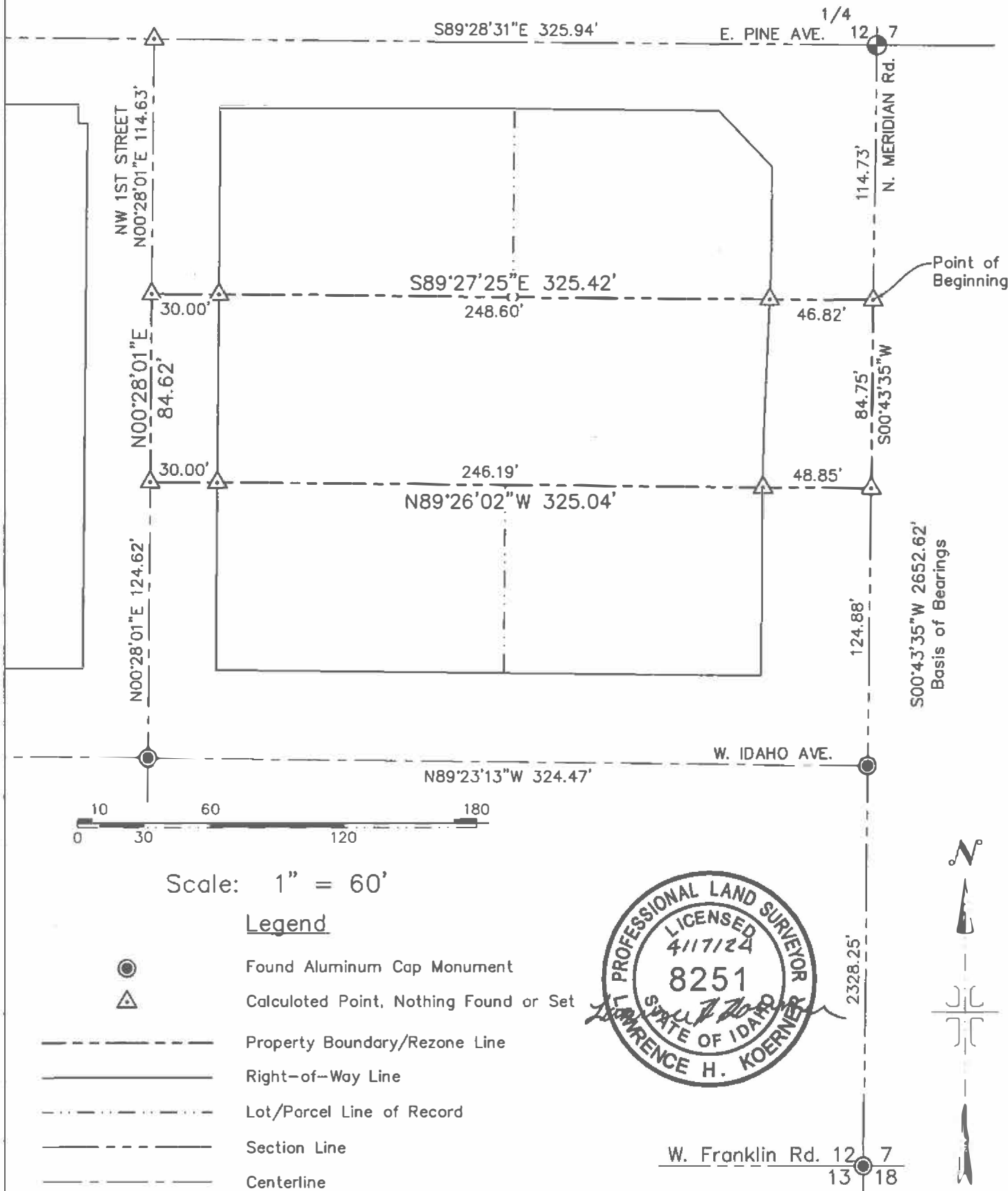


EXHIBIT B



Point of Beginning

Basis of Bearings



Scale: 1" = 60'

Legend

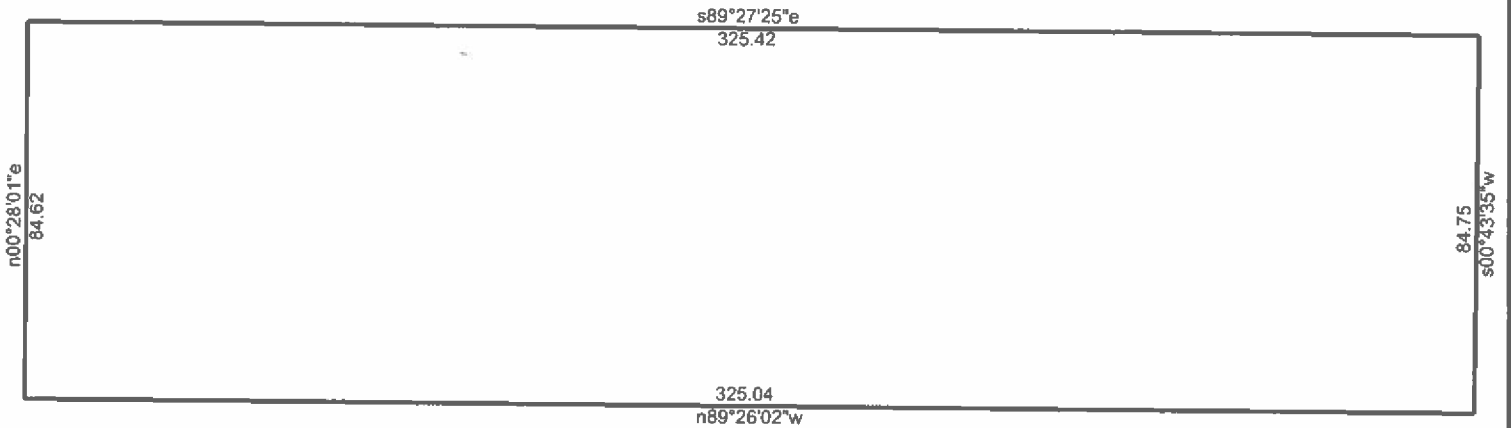
- Found Aluminum Cap Monument
- Calculated Point, Nothing Found or Set
- Property Boundary/Rezone Line
- Right-of-Way Line
- Lot/Parcel Line of Record
- Section Line
- Centerline



IDAHO SURVEY GROUP, LLC
 9955 W. EMERALD ST.
 BOISE, IDAHO 83704
 (208) 846-8570

Rezone Exhibit Drawing for
Expansion International Inc.,
 A Portion on Lot 2, Block 1 of West View Addition to Meridian
 Located in the SE 1/4 of Section 12,
 T.3N., R.1E., B.M., City of Meridian, Ado County, Idaho.

Job No. 23-343
Sheet No. 1
Dwg. Date 1/3/2024



Expansion International Inc., Rezone Description

4/17/2024

Scale: 1 inch= 43 feet

File:

Tract 1: 0.6323 Acres (27542 Sq. Feet), Closure: n00.0000e 0.00 ft. (1/218899), Perimeter=820 ft.

- 01 s00.4335w 84.75
- 02 n89.2602w 325.04
- 03 n00.2801e 84.62
- 04 s89.2725e 325.42