

Description for Re-Zone

A parcel of land being a portion of the Southeast Quarter of the Southwest Quarter of Section 31, Township 3 North, Range 1 East of the Boise Meridian, Meridian, Idaho, being more particularly described as follows:

Commencing at the found 2 inch aluminum cap on a 5/8 inch iron pin stamped PLS 11463 at the Center-South Sixteenth Corner of Section 31, T. 3 N., R. 1 E., from which the found 5/8 inch iron pin with plastic cap labeled PLS 12459 at the Quarter Corner common to Sections 31 & 6 bears S 00° 15' 54" W a distance of 1341.76 feet; thence N 89° 51' 33" W a distance of 1000.97 feet to a set 5/8th inch iron pin with a 2 inch aluminum cap stamped PLS 11463 and the **POINT OF BEGINNING**;

Thence S 00° 10' 01" W for a distance of 334.54 feet to a set 5/8th inch iron pin with a 2 inch aluminum cap stamped PLS 11463;

Thence N 89° 49' 59" W for a distance of 306.59 feet to a found 1/2 inch iron pin with a plastic cap labeled PLS 11463;

Thence N 00° 06' 14" W for a distance of 334.40 feet to a found stone monument with a chiseled "X";

Thence S 89° 51' 33" E for a distance of 308.17 feet to a set 5/8th inch iron pin with a 2 inch aluminum cap stamped PLS 11463, the **POINT OF BEGINNING**;

Said parcel contains 2.360 acres or 102,809 square feet , more or less.

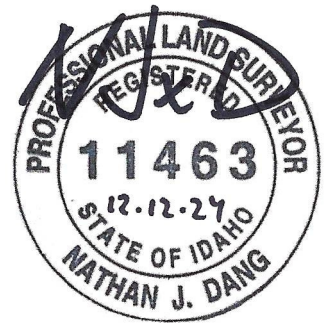
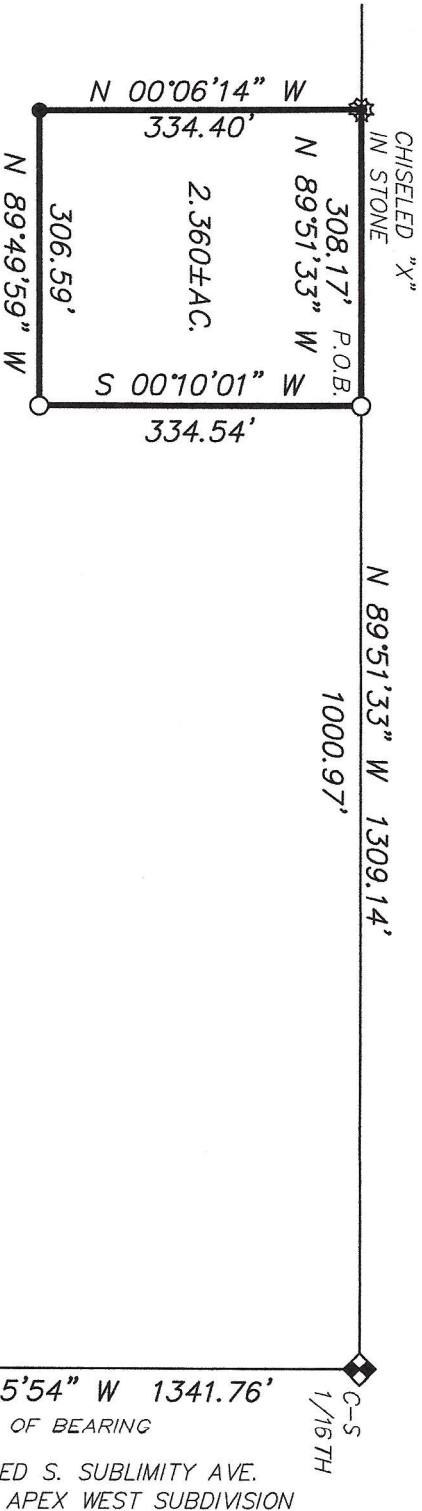


EXHIBIT MAP

A PORTION OF LAND LYING WITHIN THE SE 1/4 OF
THE SW 1/4 OF SECTION 31, T.3N., R.1E., B.M.
ADA COUNTY—STATE OF IDAHO



SCALE: 1"=200'



LEGEND

- BOUNDARY LINE
- SECTION LINE
- PARCEL LINE

- FOUND 2" ALUMINUM CAP IN ASPHALT
- FOUND 5/8" IRON PIN, WITH PLASTIC CAP, AS NOTED
- FOUND 5/8" IRON PIN WITH 2" ALUMINUM CAP, PLS 11463
- FOUND 1/2" IRON PIN, WITH PLASTIC CAP, PLS 4725
- SET 5/8" IRON PIN WITH 2" ALUMINUM CAP, PLS 11463

P.O.B. POINT OF BEGINNING



N 89°42'24" W 2490.40'

T.3N. R.1E. B.M.
T.2N. R.1E. B.M.



ACCURATE
SURVEYING & MAPPING
1520 W. Washington St.
Boise, Idaho 83702
(208) 488-4227
www.accuratesurveyors.com

DATE: DEC, 2024

JOB 24-244