

### Description for Re-Zoning

A parcel of land being a portion of the Southeast Quarter of the Southwest Quarter of Section 31, Township 3 North, Range 1 East of the Boise Meridian, City of Meridian, Idaho, being more particularly described as follows:

**BEGINNING** at the found 2 inch aluminum cap on a 5/8 inch iron pin stamped PLS 11463 at the Center-South Sixteenth Corner of Section 31, T. 3 N., R. 1 E., from which the found 5/8 inch iron pin with plastic cap labeled PLS 12459 at the Quarter Corner common to Sections 31 & 6 bears S 00° 15' 54" W a distance of 1341.76 feet; Thence S 89° 51' 33" E for a distance of 62.50 feet to a point on the centerline of S. Sublimity Ave. as shown in the proposed plat of Apex Northwest Subdivision #4, Page 2, Block 14;

Thence S 00° 15' 54" W along the centerline of said S. Sublimity Ave. for a distance of 391.80 feet;

Thence N 89° 51' 33" W for a distance of 62.50 feet to a found 5/8 inch iron pin with a 2 inch aluminum cap stamped PLS 11463;

Thence 133.61 feet along a curve to the right, said curve having a radius of 523.50 feet, a central angle of 14° 37' 23" and a long chord bearing N 82° 25' 25" W a distance of 133.25 feet to a found 5/8<sup>th</sup> inch iron pin with a 2 inch aluminum cap stamped PLS 11463;

Thence N 75° 06' 43" W for a distance of 94.39 feet to a found 5/8<sup>th</sup> inch iron pin with a 2 inch aluminum cap stamped PLS 11463;

Thence 122.44 feet along a curve to the left, said curve having a radius of 476.50 feet, a central angle of 14° 43' 21" and a long chord bearing N 82° 28' 24" W a distance of 122.10 feet to a found 5/8<sup>th</sup> inch iron pin with a 2 inch aluminum cap stamped PLS 11463;

Thence continuing N 89° 50' 04" W for a distance of 308.87 feet to a found 5/8<sup>th</sup> inch iron pin with a plastic cap labeled PLS 4725;

Thence N 89° 49' 59" W for a distance of 346.90 feet to a set 5/8<sup>th</sup> inch iron pin with a 2 inch aluminum cap stamped PLS 11463;

Thence N 00° 10' 01" E for a distance of 334.54 feet to a set 5/8<sup>th</sup> inch iron pin with a 2 inch aluminum cap stamped PLS 11463;

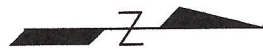
Thence S 89° 51' 33" E for a distance of 1000.97 feet to a found 5/8<sup>th</sup> inch iron pin with a 2 inch aluminum cap stamped PLS 11463, said corner being the Center-South 1/16th Corner the **POINT OF BEGINNING**;

Said parcel contains 8.480 acres, more or less.



# EXHIBIT MAP

A PARCEL OF LAND LYING WITHIN THE SE 1/4 OF  
THE SW 1/4 OF SECTION 31, T.3N., R.1E., B.M.  
ADA COUNTY—STATE OF IDAHO



SCALE: 1"=200'

## LEGEND

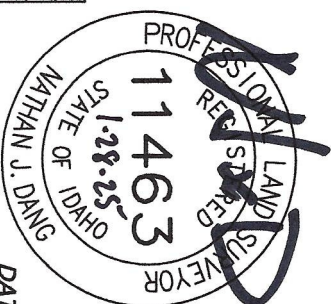
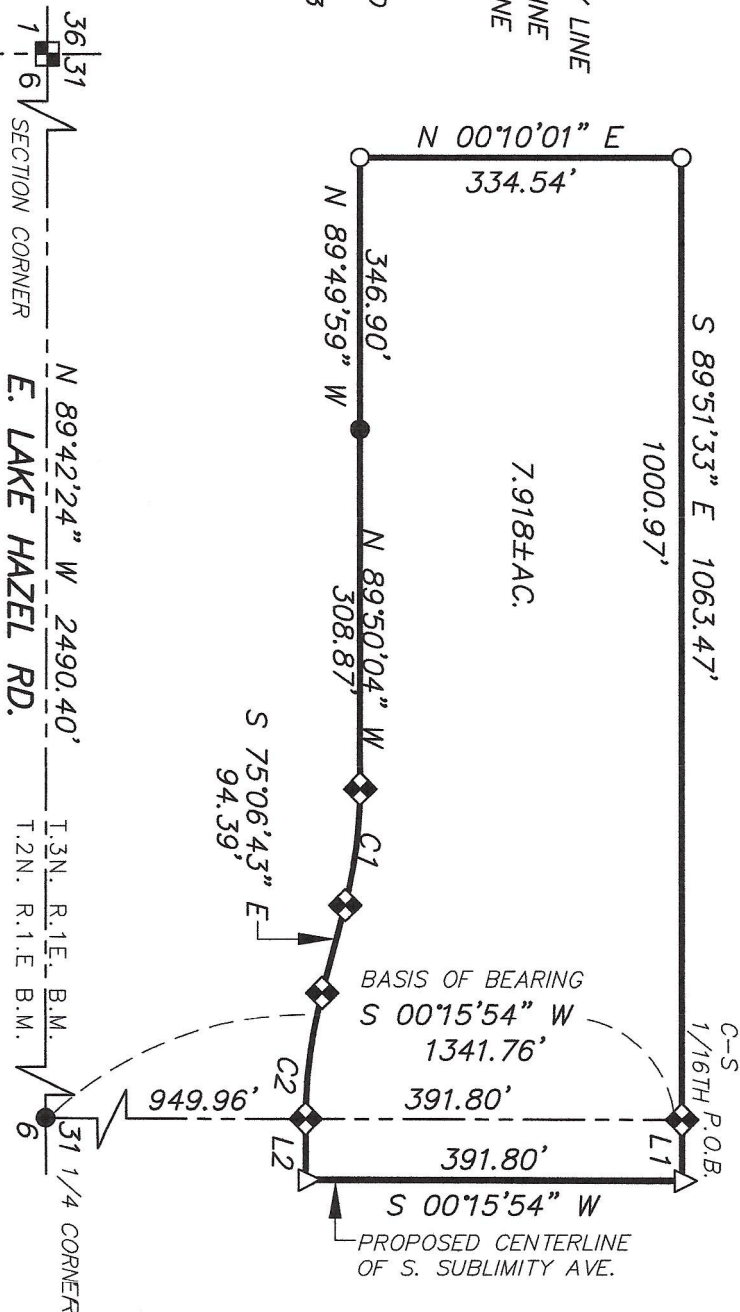
- BOUNDARY LINE
- SECTION LINE
- PARCEL LINE
- FOUND 2" ALUMINUM CAP  
IN ASPHALT
- FOUND 5/8" IRON PIN,  
WITH PLASTIC CAP, AS NOTED
- FOUND 5/8" IRON PIN WITH  
2" ALUMINUM CAP, PLS 11463
- FOUND 1/2" IRON PIN, WITH  
PLASTIC CAP, PLS 4725
- SET 5/8" IRON PIN WITH  
2" ALUMINUM CAP, PLS 11463
- P.O.B. POINT OF BEGINNING
- △ CALCULATED POINT

## LINE TABLE

LINE	BEARING	DISTANCE
L1	S 89°51'33" E	62.50'
L2	N 89°51'33" W	62.50'

## CURVE TABLE

CURVE	ARC LENGTH	RADIUS	DELTA ANGLE	CHORD BEARING	CHORD LENGTH
C1	122.44'	476.50'	14°43'21"	S 82°28'24" E	122.10'
C2	133.61'	523.50'	14°37'23"	S 82°25'25" E	133.25'



**ACCURATE**  
SURVEYING & MAPPING

1520 W. Washington St.  
Boise, Idaho 83702  
(208) 488-4227  
www.accuratesurveyors.com

DATE: DEC, 2024

JOB 24-244