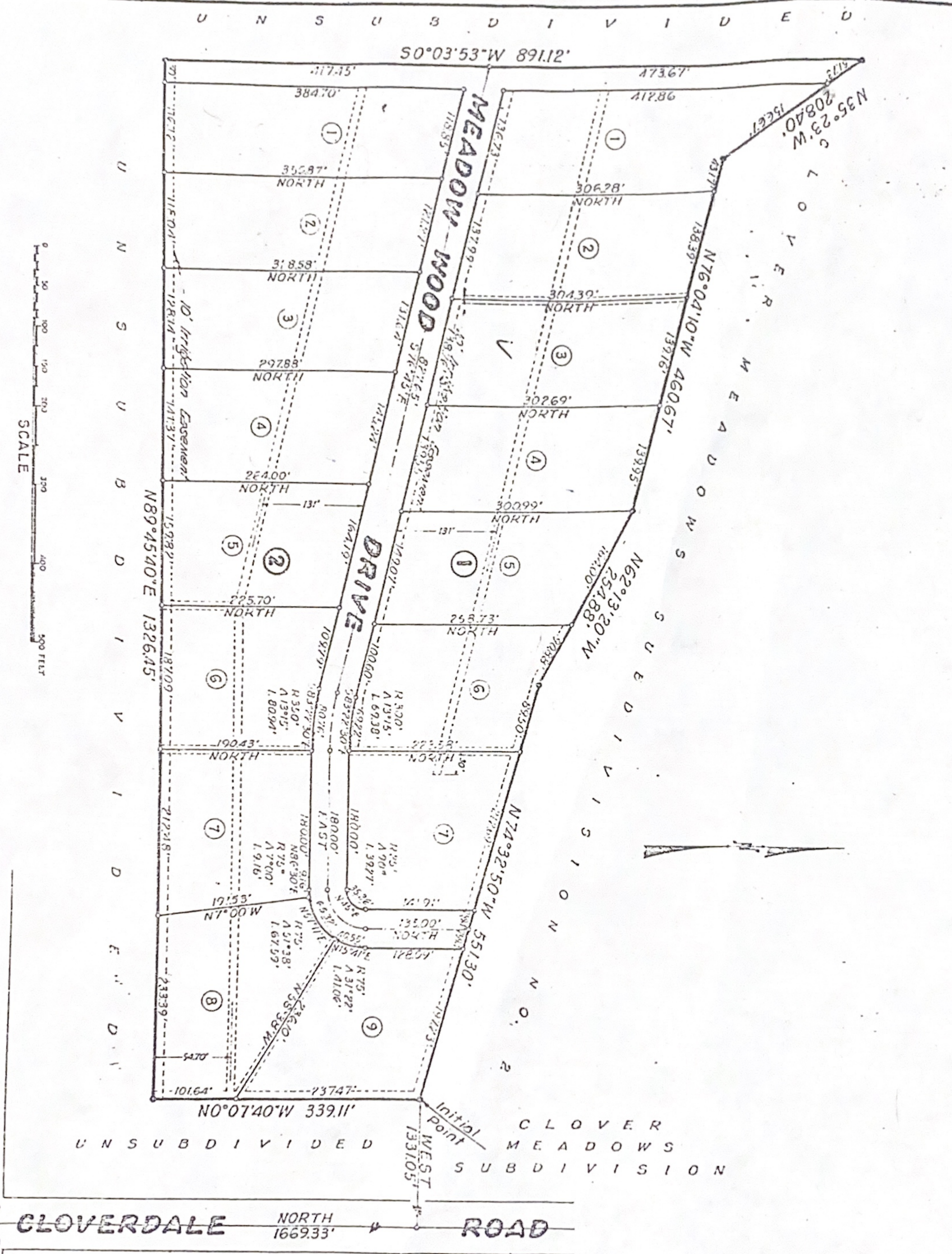


# CLOVER MEADOWS SUBDIVISION NO. 3

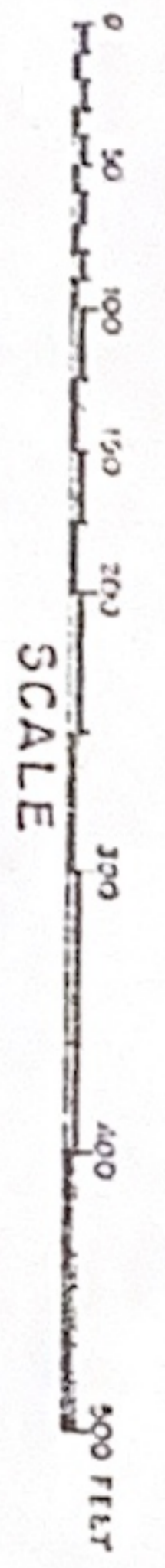
## A PORTION OF THE SEC OF SECTION 4, T.3N., R.1E., B.M., ADA COUNTY, IDAHO.

HOFFMANN & FISKE  
CONSULTING ENGINEERS



**LEGEND**

- 3/4" x 3/4" Steel Pipe - 30' Points on Boundary
- 1/2" x 3/4" Steel Pipe - 20' L. Corners and Points
- 10' UTILITY Easement
- 5' Single Easement
- 5' Double Easement
- ① Lot Number
- ① Block Number



FAIRVIEW AVE.  
43  
910