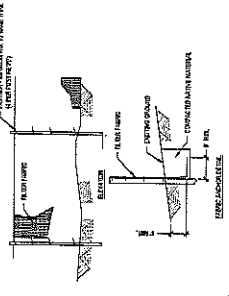


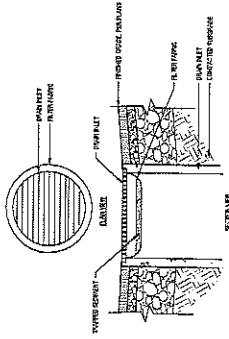
1 Stabilized Construction Entrances (BMP 40)
Page 115

- CONSTRUCTION SPECIFICATIONS:**
1. THE STABILIZED ENTRANCE SHALL BE CONSTRUCTED IN ACCORDANCE WITH THE FOLLOWING SPECIFICATIONS:
 2. THE STABILIZED ENTRANCE SHALL BE CONSTRUCTED WITH A MINIMUM OF 18" OF 1/2" SAND ON TOP OF THE STABILIZED ENTRANCE.
 3. THE STABILIZED ENTRANCE SHALL BE CONSTRUCTED WITH A MINIMUM OF 18" OF 1/2" SAND ON TOP OF THE STABILIZED ENTRANCE.
 4. THE STABILIZED ENTRANCE SHALL BE CONSTRUCTED WITH A MINIMUM OF 18" OF 1/2" SAND ON TOP OF THE STABILIZED ENTRANCE.
 5. THE STABILIZED ENTRANCE SHALL BE CONSTRUCTED WITH A MINIMUM OF 18" OF 1/2" SAND ON TOP OF THE STABILIZED ENTRANCE.
 6. THE STABILIZED ENTRANCE SHALL BE CONSTRUCTED WITH A MINIMUM OF 18" OF 1/2" SAND ON TOP OF THE STABILIZED ENTRANCE.
 7. THE STABILIZED ENTRANCE SHALL BE CONSTRUCTED WITH A MINIMUM OF 18" OF 1/2" SAND ON TOP OF THE STABILIZED ENTRANCE.
 8. THE STABILIZED ENTRANCE SHALL BE CONSTRUCTED WITH A MINIMUM OF 18" OF 1/2" SAND ON TOP OF THE STABILIZED ENTRANCE.
 9. THE STABILIZED ENTRANCE SHALL BE CONSTRUCTED WITH A MINIMUM OF 18" OF 1/2" SAND ON TOP OF THE STABILIZED ENTRANCE.



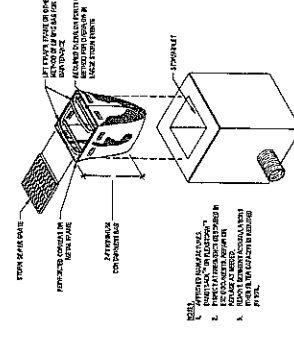
4 Silt Fence Install 1 (BMP 65)
Page 117

- NOTE:**
1. THE SILT FENCE SHALL BE CONSTRUCTED WITH A MINIMUM OF 18" OF 1/2" SAND ON TOP OF THE SILT FENCE.
 2. THE SILT FENCE SHALL BE CONSTRUCTED WITH A MINIMUM OF 18" OF 1/2" SAND ON TOP OF THE SILT FENCE.
 3. THE SILT FENCE SHALL BE CONSTRUCTED WITH A MINIMUM OF 18" OF 1/2" SAND ON TOP OF THE SILT FENCE.
 4. THE SILT FENCE SHALL BE CONSTRUCTED WITH A MINIMUM OF 18" OF 1/2" SAND ON TOP OF THE SILT FENCE.
 5. THE SILT FENCE SHALL BE CONSTRUCTED WITH A MINIMUM OF 18" OF 1/2" SAND ON TOP OF THE SILT FENCE.



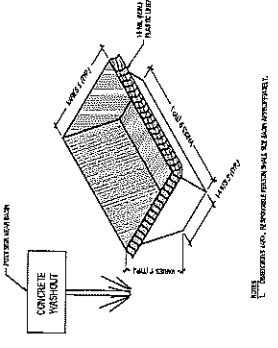
8 Drop Inlet Protection Type III (BMP 13)
Page 117

- NOTE:**
1. THE DROP INLET SHALL BE CONSTRUCTED WITH A MINIMUM OF 18" OF 1/2" SAND ON TOP OF THE DROP INLET.
 2. THE DROP INLET SHALL BE CONSTRUCTED WITH A MINIMUM OF 18" OF 1/2" SAND ON TOP OF THE DROP INLET.
 3. THE DROP INLET SHALL BE CONSTRUCTED WITH A MINIMUM OF 18" OF 1/2" SAND ON TOP OF THE DROP INLET.
 4. THE DROP INLET SHALL BE CONSTRUCTED WITH A MINIMUM OF 18" OF 1/2" SAND ON TOP OF THE DROP INLET.
 5. THE DROP INLET SHALL BE CONSTRUCTED WITH A MINIMUM OF 18" OF 1/2" SAND ON TOP OF THE DROP INLET.



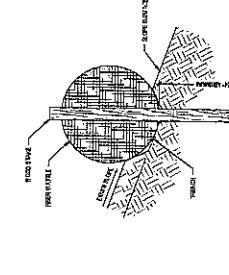
3 Drop Inlet Protection Type I (BMP 13)
Page 117

- NOTE:**
1. THE DROP INLET SHALL BE CONSTRUCTED WITH A MINIMUM OF 18" OF 1/2" SAND ON TOP OF THE DROP INLET.
 2. THE DROP INLET SHALL BE CONSTRUCTED WITH A MINIMUM OF 18" OF 1/2" SAND ON TOP OF THE DROP INLET.
 3. THE DROP INLET SHALL BE CONSTRUCTED WITH A MINIMUM OF 18" OF 1/2" SAND ON TOP OF THE DROP INLET.
 4. THE DROP INLET SHALL BE CONSTRUCTED WITH A MINIMUM OF 18" OF 1/2" SAND ON TOP OF THE DROP INLET.
 5. THE DROP INLET SHALL BE CONSTRUCTED WITH A MINIMUM OF 18" OF 1/2" SAND ON TOP OF THE DROP INLET.

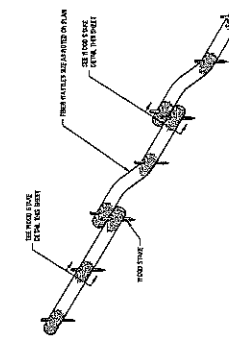


2 Concrete Washout (BMP 49)
Page 115

- CONSTRUCTION SPECIFICATIONS:**
1. THE CONCRETE WASHOUT SHALL BE CONSTRUCTED WITH A MINIMUM OF 18" OF 1/2" SAND ON TOP OF THE CONCRETE WASHOUT.
 2. THE CONCRETE WASHOUT SHALL BE CONSTRUCTED WITH A MINIMUM OF 18" OF 1/2" SAND ON TOP OF THE CONCRETE WASHOUT.
 3. THE CONCRETE WASHOUT SHALL BE CONSTRUCTED WITH A MINIMUM OF 18" OF 1/2" SAND ON TOP OF THE CONCRETE WASHOUT.
 4. THE CONCRETE WASHOUT SHALL BE CONSTRUCTED WITH A MINIMUM OF 18" OF 1/2" SAND ON TOP OF THE CONCRETE WASHOUT.
 5. THE CONCRETE WASHOUT SHALL BE CONSTRUCTED WITH A MINIMUM OF 18" OF 1/2" SAND ON TOP OF THE CONCRETE WASHOUT.
 6. THE CONCRETE WASHOUT SHALL BE CONSTRUCTED WITH A MINIMUM OF 18" OF 1/2" SAND ON TOP OF THE CONCRETE WASHOUT.
 7. THE CONCRETE WASHOUT SHALL BE CONSTRUCTED WITH A MINIMUM OF 18" OF 1/2" SAND ON TOP OF THE CONCRETE WASHOUT.
 8. THE CONCRETE WASHOUT SHALL BE CONSTRUCTED WITH A MINIMUM OF 18" OF 1/2" SAND ON TOP OF THE CONCRETE WASHOUT.
 9. THE CONCRETE WASHOUT SHALL BE CONSTRUCTED WITH A MINIMUM OF 18" OF 1/2" SAND ON TOP OF THE CONCRETE WASHOUT.

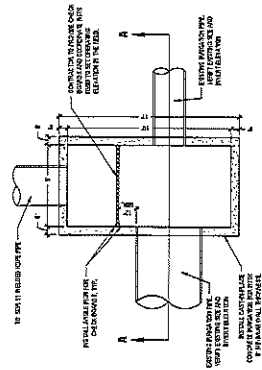


6 Fiber Roll Stake Section (BMP 84)
Page 117



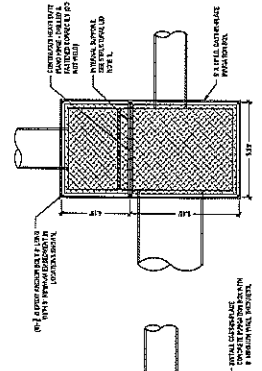
7 Fiber Roll Stake Section 2 (BMP 84)
Page 117

1. PROVIDE 1/2" MIN. THICKNESS OF FLOOR
2. PROVIDE 1/2" MIN. THICKNESS OF FLOOR
3. PROVIDE 1/2" MIN. THICKNESS OF FLOOR
4. PROVIDE 1/2" MIN. THICKNESS OF FLOOR
5. PROVIDE 1/2" MIN. THICKNESS OF FLOOR



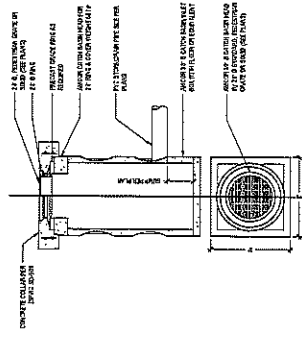
1 Infiltration Box (1) - Item 0802.4.1.M.1
Scale: 1/8" = 1'-0"

1. PROVIDE 1/2" MIN. THICKNESS OF FLOOR
2. PROVIDE 1/2" MIN. THICKNESS OF FLOOR
3. PROVIDE 1/2" MIN. THICKNESS OF FLOOR
4. PROVIDE 1/2" MIN. THICKNESS OF FLOOR
5. PROVIDE 1/2" MIN. THICKNESS OF FLOOR

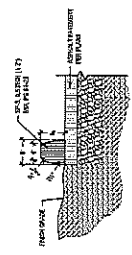


Section A-A

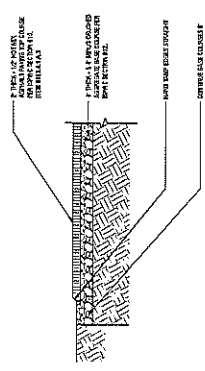
2 30" H Storm Drain Catch Basin - Item 0802.4.1.C.2
Scale: 1/8" = 1'-0"



3 Temporary 6-in Asphalt Curb - Item 07 06112
Scale: 1" = 1'-0"



4 Temporary Pathway Section - Item 0810.4.1.A.3
Scale: 1/8" = 1'-0"



5

- Sheet Notes**
1. CONTRACTOR SHALL VERIFY ALL UTILITIES AND RECORDS.
 2. VERIFY ALL UTILITIES AND RECORDS SHALL BE CORRECTED BEFORE CONSTRUCTION.
 3. VERIFY ALL UTILITIES AND RECORDS SHALL BE CORRECTED BEFORE CONSTRUCTION.
 4. VERIFY ALL UTILITIES AND RECORDS SHALL BE CORRECTED BEFORE CONSTRUCTION.
 5. VERIFY ALL UTILITIES AND RECORDS SHALL BE CORRECTED BEFORE CONSTRUCTION.
 6. VERIFY ALL UTILITIES AND RECORDS SHALL BE CORRECTED BEFORE CONSTRUCTION.
 7. VERIFY ALL UTILITIES AND RECORDS SHALL BE CORRECTED BEFORE CONSTRUCTION.
 8. VERIFY ALL UTILITIES AND RECORDS SHALL BE CORRECTED BEFORE CONSTRUCTION.
 9. VERIFY ALL UTILITIES AND RECORDS SHALL BE CORRECTED BEFORE CONSTRUCTION.
 10. VERIFY ALL UTILITIES AND RECORDS SHALL BE CORRECTED BEFORE CONSTRUCTION.
 11. VERIFY ALL UTILITIES AND RECORDS SHALL BE CORRECTED BEFORE CONSTRUCTION.
 12. VERIFY ALL UTILITIES AND RECORDS SHALL BE CORRECTED BEFORE CONSTRUCTION.
 13. VERIFY ALL UTILITIES AND RECORDS SHALL BE CORRECTED BEFORE CONSTRUCTION.
 14. VERIFY ALL UTILITIES AND RECORDS SHALL BE CORRECTED BEFORE CONSTRUCTION.
 15. VERIFY ALL UTILITIES AND RECORDS SHALL BE CORRECTED BEFORE CONSTRUCTION.
 16. VERIFY ALL UTILITIES AND RECORDS SHALL BE CORRECTED BEFORE CONSTRUCTION.
 17. VERIFY ALL UTILITIES AND RECORDS SHALL BE CORRECTED BEFORE CONSTRUCTION.
 18. VERIFY ALL UTILITIES AND RECORDS SHALL BE CORRECTED BEFORE CONSTRUCTION.
 19. VERIFY ALL UTILITIES AND RECORDS SHALL BE CORRECTED BEFORE CONSTRUCTION.
 20. VERIFY ALL UTILITIES AND RECORDS SHALL BE CORRECTED BEFORE CONSTRUCTION.

City of Meridian
Hunter Lateral Relocation - Meridian Civic Block

Gravity Irrigation
 Overall Layout

C3.00

