



## PARKS & RECREATION COMMISSION

### REGULAR MEETING • MINUTES

City Hall Council Chambers, 33 East Broadway Avenue, Meridian, Idaho  
Wednesday, August 11, 2021 • 5:30 p.m.

*The Meridian Parks & Recreation Commission is a volunteer citizens' group that is created and empowered to advise the City on issues relating to park facilities and recreation programs of the City. Their mission is to gather input from staff and other qualified personnel on issues relating to the creation and design of public parks and open spaces; to listen to public input; and to provide advice and recommendations on parks and recreation related matters to the Mayor and City Council.*

#### Roll-Call Attendance

Commission President Jo Greer called the meeting to order at approximately 5:36 p.m. MPR Director Steve Siddoway took roll-call attendance as follows:

<input checked="" type="checkbox"/> Jo Greer, President	<input type="checkbox"/> Albert Kang
<input type="checkbox"/> Keith Bevan, Vice President	<input checked="" type="checkbox"/> John Nesmith
<input checked="" type="checkbox"/> Dom Gelsomino	<input checked="" type="checkbox"/> Autumn Short
<input checked="" type="checkbox"/> Jennifer Bobo	<input checked="" type="checkbox"/> Jessica West
<input checked="" type="checkbox"/> Camden Hyde	<input type="checkbox"/> Jessica Perrault, City Council Ex-Officio

Others present were: MPR Department staff—Parks Superintendent Mike Barton, Recreation Manager Garrett White, Pathways Project Manager Kim Warren, City Arborist Matthew Perkins, and Volunteer Program Coordinator Chelsea Cantrell; and Deputy City Attorney Emily Kane.

#### Adoption of the Agenda

*Commission President Jo Greer entertained a motion to approve the agenda as presented. Commissioner Dom Gelsomino moved to adopt the agenda. Commissioner Jessica West seconded. All were in favor of the motion.*

#### Approval of the Minutes

##### 1. July 14, 2021 Regular Meeting – Jo Greer

*Commission President Jo Greer entertained a motion to adopt the minutes as presented. Commissioner Dom Gelsomino moved to approve the minutes. Commissioner Jessica West seconded. All were in favor of the motion.*

#### Announcements

##### 2. Upcoming Events – Garrett White

On behalf of MPR Marketing Coordinator Shelly Houston, MPR Recreation Manager Garrett White provided an Upcoming Events flyer and highlighted the events noted, which is attached to these meeting minutes. Each Commissioner also received a hard copy of the 2021 Fall Activity Guide publication.

### 3. Parks Tour Route – Steve Siddoway

MPR Director Steve Siddoway reported MPR staff is moving forward with planning of the annual MPR Facilities Tour scheduled for September 8, 2021. They have been brainstorming the locations to see and what projects have been completed in the last couple of years since the last tour that they would want to go see. Steve presented a preliminary tour route and asked the Commissioners to watch for a finalized agenda that will be forthcoming soon.

## Old Business

### 4. Urban Forestry Management Plan Update – Matthew Perkins

City Arborist Matthew Perkins provided a review about the Urban Forestry Management Plan, which was covered at the June 9, 2021 MPR Commission Meeting. Copies of his PowerPoint slides are attached to these meeting minutes. His focus that evening was on the goals and objectives documented within the plan, which he highlighted.

#### Commission Feedback:

- **Jo Greer** – After receiving feedback from the community, she suggested revamping the Memorial Tree program and potentially moving to tree adoption instead. The memorials make it feel more like patrons are walking through cemeteries and it somewhat takes away from the enjoyment of the park.
- **John Nesmith** – He echoed Commissioner Greer’s comments above. In addition, he recommended promoting the Kleiner Park Memorial Tree Plaza and move away from memorial plaques being placed within the Kleiner Park Arboretum.
- **Jessica West** – She asked Matt to provide an idea of what the incentives are for today for developers concerning trees. *One idea would be to have them incorporate some of the existing, larger caliper trees. Another idea is giving credit for wood that gets repurposed or recycled from development projects. As part of the process, Matt would come up with a tree mitigation plan for the developers.*

With the inventory software and for the MPR Department to purchase its own license, is that part of the budget requests for FY2022? *Yes.*

A copy of the draft Goals section of the plan will be emailed to the Commission on August 12, 2021 for review and any recommendations/feedback.

## New Business

### 5. MPR Department Volunteer Program Update – Chelsea Cantrell

MPR Volunteer Coordinator Chelsea Cantrell provided a PowerPoint presentation about the City’s Volunteer Program. Copies of her slides are attached to these meeting minutes.

#### Commission Feedback:

- **Dom Gelsomino** – He would like to volunteer as The Grinch again this year.
- **Autumn Short** – How can they sign up to volunteer? *Chelsea has signups on Volunteer Match.*
- **Jo Greer** – When Chelsea sends out emails to her volunteers, can the Commissioners be included in those emails? *Yes.*
- **Camden Hyde** – Is there an age limit to volunteering? *No.*

#### 6. **Settlers Park Tennis/Pickleball Conversion Update – Garrett White**

MPR Recreation Manager Garrett White provided an update and proposal about the potential conversion of two tennis courts in Settlers Park to pickleball courts. Copies of his PowerPoint slides are attached to these meeting minutes.

##### Commission Feedback:

- **John Nesmith** – Could they add 9 or 12 pickleball courts where the space for tennis court 7 is and then leave 6 tennis courts in? *It all depends where the sun sets. MPR staff did look at these options already.*
- **Camden Hyde** – Would there be a fence in between courts 1-3 and 4-6? *Yes. The idea is to keep the current tennis nets up.*
- **Jennifer Bobo** – Is the Boise Area Pickleball Association okay with the number of players within the space? *Yes.*  
Does the MPR Department track the ratio of tennis players versus pickleball players in general outside of tournament play? *Garrett can estimate and visually see the ratio because he receives the calls from patrons.*
- **Jo Greer** – With the 6 courts, would the MPR Department be resurfacing all of them so that each court would be individually marked? How would that look? Would it be 6 courts replaced on top of 2 courts? *No. The whole thing would be one color and then the pickleball courts would be lined and colored with a different color. There wouldn't be any remnants of tennis with the exception of the nets.*

She agrees with the proposal and expressed it is the obvious solution.

The next steps would be to gather all the feedback and questions, ensure MPR staff members are talking to the users of the facility to ensure they are making the right decision, and go from there.

#### **Pathways Workshop**

##### 7. **6 Pathway Infill Projects Update – Kim Warren**

MPR Pathways Project Manager Kim Warren provided a PowerPoint presentation about the status of the six pathway infill projects in which the MPR Department will apply budget money towards in FY2022 for construction, pending budget approval. Copies of her slides are attached to these meeting minutes.

## 8. ULI Partnership Update – Kim Warren

MPR Pathways Project Manager Kim Warren gave an update in the form of a PowerPoint presentation about an Urban Land Institute (ULI) partnership opportunity. Copies of her slides are attached to these meeting minutes.

### Commission Feedback:

- **Jennifer Bobo** – For her and in talking with the public, wanting to use the pathways to exercise on and having a clear path to go on is important. Aside from carrying a map, it is difficult to find your way of where to turn and go. She would like to be able to go out on a Saturday morning for a long bike ride and know where to go (continuity/wayfinding).
- **Jo Greer** – To add to Commissioner Bobo’s comments above, the residential areas and subdivisions are more confusing than the actual paved pathways.
- **John Nesmith** – Is it possible to loop Five Mile Creek and Ten Mile Creek (or even connect Five Mile to Ten Mile north and south)? *The MPR Department has concepts that focus on Five Mile Creek, Ten Mile Creek, and the Meridian Loop. The Meridian Loop would allow to connect between one and another on the ends creating a loop once they all have been connected.*
- **Jessica West** – She would like to see mile markers added on the pathways, within parks, and in general; i.e., main roads or stoplights in between the subdivisions. She would like to have key locations in the City to track distance from with signage. For example, when someone is five miles from City Hall with an arrow pointing the correct way.  
  
She expressed her excitement, as this partnership would be a great opportunity to have experts in the field to provide the City/MPR Department some guidance/pointers based on what they have learned. So, if all the City/Department has to do is pay for the travel and have them show up and dedicate the time, then it seems like a huge win for Meridian. **Commissioner Greer** agreed.

## 9. General Map & Missing Links Brainstorming – Kim Warren

MPR Pathways Project Manager Kim Warren provided a large-scale map of Meridian’s pathway system on an easel. She asked the Commissioners using blue dot stickers to identify on the map quadrants north and south of the interstate or east and west of Meridian Road to see the distribution of where the Commissioners live in town. In addition, by marking up the map using markers, other colored stickers, and writing notes, the group identified areas within the City that need attention or where they are a challenge as far as missing pathway segments to be able to get to destinations in town. They focused on: 1) Point of View; 2) Destinations; 3) Links Between Destinations; and 4) Other Connectivity Gaps, as depicted below:



- Parks Tour – If the Commissioners think of anything they would like to point out or recommend related to the tour, it is planned to be the meeting for the MPR Commission next month. MPR staff members are actively working on this.

Parks Superintendent Mike Barton reported on the following:

- Lakeview Golf Club – He has been working on many tasks related to the golf course. That evening there were approximately 80 women from the Chamber of Commerce's Women in Business. In addition to the regular golfers out there, the place was fully packed. There are some new fountains going in and electrical work. They started the irrigation design and negotiated the design of cart paths to overlay on top of this to bid at the same time. They are prepping for an early end to the irrigation system; water will stop flowing on September 14, 2021. Mike and Matt Perkins went out and identified a number of trees that either need removal or pruning. The new carts that were ordered are being shipped from Georgia next week and should be arriving in two weeks from now.
- Discovery Park, Phase 2 – Certificate of Zoning Compliance submittals are in to ACHD. The Williams Pipeline submittal is going in this week. A cooperative development agreement was approved last night at Council to widen Lake Hazel Road and construct a large portion of Recreation Avenue in partnership between Brighton, the City, and ACHD. This will improve both pedestrian connectivity and vehicular flow around that area during big events. MPR staff is positioning for an earlier bid (late October) with bids to open December 1<sup>st</sup>.
- Kleiner Park Pickleball – This project is still active. There is a reimbursement agreement that is now with Brighton and is currently being reviewed for signature. MPR staff hopes to construct the pickleball courts this fall, apply a coating to them next spring, and then open them up for play thereafter.

MPR Recreation Manager Garrett White reported on the following:

- Staffing – Two new staff members have been hired – Renee McFarlane, Homecourt Site Supervisor; and Kaela Hopkins, Administrative Assistant I. He was busy conducting interviews. He has been working with staff and training them.
- External Events – He has been overseeing the external events. The Soul Food Festival just happened last weekend in Kleiner Park. Upcoming events include a vendor fair, Treasure Valley Art Festival, and Regional Mustang Show.
- Budget – He has been working on some budget items. MPR staff members are reviewing all budgets and trying to meet all of their cost recovery philosophy standards.
- Special Events – Movie Night has been happening in Settlers Park. Teen Night started last week with approximately 30 kids in attendance at the Meridian Homecourt.
- Sports – A lot is going on with Softball, Volleyball, Basketball, and Cornhole. MPR staff is analyzing programs to identify gaps.

- Arts & Culture – There are many tasks related to Concerts on Broadway, Art Week, mural series, traffic box wraps, etc.
- Homecourt – They are struggling to hire part-time weekend staff. The facility will be closed August 30 through September 8 for the annual floor resurfacing project. Jake Garro has also been working on schedules for the fall with various AAU groups.
- Summer Camp – Friday is the last day of Camp Mer-Ida-Moo, which was held at two sites this year. The Department is offering Outdoor Adventure Camp one week this year.
- Front Desk – With being one Administrative Assistant I short, Jeannette Sanchez has been taking the brunt of all the phone calls, emails, registrations, reservations, etc.
- MPR Team – He gave a shout-out to the entire team for filling in where they can.

Pathways Manager Kim Warren reported on the following:

- Wayfinding – As a follow-up thought/idea from the pathways workshop held earlier that evening, she may create a map for developers to show the pathway plan and then another map that depicts how to get from one place to the next safely. She thanked the Commission for their valuable input and time.

### Adjourn

*Commission President Jo Greer entertained a motion to adjourn the meeting. Commissioner Dom Gelsomino moved to adjourn. Commissioner Jessica West seconded. The vote was unanimous and in favor of the motion.*

There being no further business, the meeting adjourned at approximately 8:26 p.m.

(AUDIO & VIDEO ON FILE OF THESE PROCEEDINGS)

APPROVED:

\_\_\_\_\_  
JO GREER, PRESIDENT

\_\_\_\_\_/\_\_\_\_\_/\_\_\_\_\_  
DATE

\_\_\_\_\_  
KEITH BEVAN, VICE PRESIDENT

/rem

### Attachments:

- 1) Flyer: Upcoming Events (1 page)
- 2) PowerPoint: Urban Forestry Management Plan (7 pages)
- 3) PowerPoint: MPR Department Volunteer Program (6 pages)
- 4) PowerPoint: Settlers Park Tennis Court Conversion Discussion (3 pages)
- 5) PowerPoint: 6 Pathway Infill Projects Status Update (7 pages)
- 6) PowerPoint: Urban Land Institute Panel Opportunity/Pathways Workshop (4 pages)



# UPCOMING EVENTS

## **Meridian Main Street Market**

*Every Saturday through Oct 16, 9:00 am—2:00 pm, Meridian City Hall Outdoor Plaza*

Vendors, music, food & bev, community information. Details at: [meridianmainstreetmarket.com](http://meridianmainstreetmarket.com)

## **Sparklight Movie Night in Meridian**

*Friday Nights, June 11—August 20, Movies Begin at Dusk, Settlers Park, Free*

Enjoy free family-friendly outdoor movies in Meridian's Settlers Park! Attendees are encouraged to bring folding chairs or lawn blankets. View the movie schedule at: [meridianscity.org/movienight](http://meridianscity.org/movienight).

## **Teen Nights at the Meridian Homecourt**

NEW! We're offering several opportunities for Meridian's teens to meet, mingle and play at the Meridian Homecourt, the City's hardwood court facility located at 936 Taylor Avenue.

Friday Nights 7:00—10:00 pm, August 6, 13, and 20

Admission is free; Pizza will be provided to the first 50 attendees (or while supplies last)

## **Concerts on Broadway Live Music Series**

Saturday, August 28 (Kings of Swing)

Saturday, September 11 (Billy Blues Band)

Saturday, September 25 (To Be Announced)

Live concerts return the Meridian City Hall's outdoor plaza. Each free outdoor concert will begin with an opening act at 6:30 pm and the headliners will take the stage at 7:00 pm. Bring folding chairs!

## **Meridian Art Week featuring a Meridian Symphony Concert in the Park**

Meridian Art Week will be celebrated September 8—11 with a variety of public events, including a free outdoor concert by the Meridian Symphony Orchestra on Friday, September 10, at 6:30 pm, at the Kleiner Park Amphitheatre. Find the full schedule of events at: [meridianscity.org/artweek](http://meridianscity.org/artweek).

## **Meridian Art Sip**

Thursday, September 9, 6:00—9:00 pm, Meridian City Hall Outdoor Plaza, \$35

This event is a fundraiser for the Meridian Arts Foundation. It features wine, food, and online and in-person auction auctions. Find sponsorship and ticket information at: [meridianartsfoundation.org](http://meridianartsfoundation.org).

## **Veterans Day Ceremony at the Rock of Honor**

*Thursday, November 11, 11:00 am, Kleiner Park*

Come celebrate Meridian's service members past and present at this public ceremony at the Rock of Honor Veterans Memorial located inside Meridian's Julius M. Kleiner Memorial Park. Seating is limited, so please consider bringing folding chairs or a lawn blanket.

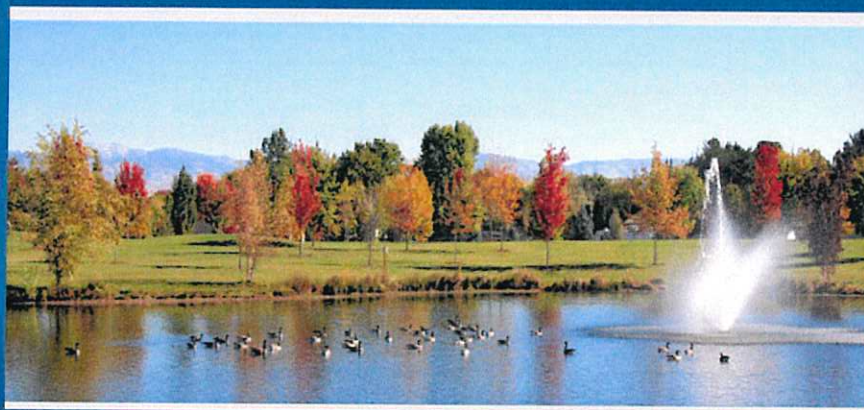
*Nominations are now open for the 2021 Meridian Stars Awards. Nomination Deadline: September 30 at 5:00 pm. Find details and an online nomination form at [meridianscity.org/meridianstars](http://meridianscity.org/meridianstars).*

Visit Meridian's Community Calendar at: [www.meridianscity.org/calendar](http://www.meridianscity.org/calendar)





# URBAN FOREST MANAGEMENT PLAN



## Meridian's Urban Forest Management Plan

### ► Who, What, When, Why, Where, & How

- Introduce the concept & need for a plan
- Outlines why trees are needed and identifies the values provided by the Urban Forest
- Proposes a Mission Statement
- Discusses the process used to create the plan
- Defines objectives of the plan
- Describes current policies and status of the Meridian Urban Forest
- Identifies stakeholders/partners
- Establishes goals & lays out strategies to accomplish those goals

# Goals and Objectives

Actions	Capital Cost Estimate	Operational Budget Impact	Time frame to complete
---------	-----------------------	---------------------------	------------------------



THE PROCESS OF CREATING THE MERIDIAN URBAN FOREST MANAGEMENT PLAN HAS ALLOWED THE CITY ARBORIST TO IDENTIFY MANY AREAS OF OPPORTUNITY WHERE WE CAN GROW THE FORESTRY PROGRAM WITHOUT A SUBSTANTIAL IMPACT TO THE CURRENT BUDGET

## Guiding Principles

### Protect -

Recognize the environmental, economic, cultural and social benefits offered by the urban forest. Refine and implement policies to protect public tree resources while seeking participation from landowners to protect private trees during development and/or mitigate the loss of canopy when preservation is not feasible.

### Expand -

Enable the growth of public and private tree resources to optimize the urban tree canopy through new tree plantings, outreach, and other incentives.

### Manage -

Improve and institutionalize the care, maintenance, funding, and operating principles for the long-term viability of a mixed-aged, sustainable urban tree resource.

### Inform -

Expand program awareness through innovative visible outreach and education campaigns.

### Partner -

Increase community, private sector and other City departments' involvement in planning, management and funding of the urban forest.



## Protect- preserve the existing canopy in Meridian

- ▶ Develop a more robust and diverse system for mitigation of tree/canopy loss during development.
- ▶ Encourage and incentivize the retention, protection, and incorporation of existing mature canopy in development among the Meridian Urban Forest.
- ▶ Explore/Develop alternative options for tree mitigation where retention is not feasible.

## Expand- continue to create appropriate spaces for trees to grow & increase the canopy of Meridian's Urban Forest.

- ▶ **Build new parks-**
  - Discovery Park Phase 2
  - West Meridian Regional Park
  - Margaret Aldape Park
- ▶ Select tree species that are well suited for the location, work with designers to incorporate more tree friendly spaces, and work with contractors to ensure planting is done correctly so that trees can reach their full potential.

**Expand-** continue to create appropriate spaces for trees to grow & increase the canopy of Meridian's Urban Forest.

- ▶ **Arboretum-** Continue to make improvements to the Kleiner Arboretum.
  - Modify irrigation to address the specific watering needs of the trees.
  - Eliminate turf areas and expand bed space to accommodate tree needs and companion planting opportunities.
  - Add additional features such as naturalized shrub/perennial beds and large rocks/boulders.
- ▶ **Lakeview Golf Course-**
  - Conduct inventory of all trees on golf course property.
  - Build a management/ maintenance plan that addresses the plant health care concerns exclusive to the property.
  - Work with golf course personnel to help guide them in the proper care for all trees on the grounds.

**Expand-** continue to create appropriate spaces for trees to grow & increase the canopy of Meridian's Urban Forest.

- ▶ **Memorial Tree Planting -**
  - Explore a system whereas existing trees in our parks can be "adopted" and/or new trees can be accepted and planted as a Memorial by members of the public. This system has potential for generating additional income for the city that can be used to alleviate expenses associated with the continued costs of maintaining the trees in the program. Care would need to be taken to ensure that this program is executed in a manner that does not result in giving our parks the aesthetic appearance of a "cemetery".
  - Create a numbered mapping system so that any/all trees in the program can be quickly and efficiently identified and located.

## Manage- continue to find innovative & efficient ways to manage the existing Urban Forest

- ▶ **Inventory software-** Procure our own license agreement
- ▶ **Tree planting-** Develop an organized, systematic plan for the continued planting of trees throughout all parks and properties, including the Arboretum.
- ▶ **City ordinance update-** Review and revise verbiage as necessary within the city ordinance text to create consistency
- ▶ **Pruning cycle-** Create an annual process whereby all City Managed Trees are pruned on a regular schedule, prioritizing trees that need the most immediate care.
- ▶ **Support Public Works' tree waste recycling program**

## Manage- continue to find innovative & efficient ways to manage the existing Urban Forest

### ▶ **Downtown trees-**

Explore the maintenance of all street trees on both sides of Main street from Franklin Road to E Fairview Ave. in order to preserve the health, value, benefits, aesthetic quality, and longevity of the mature canopy of Downtown Meridian and to manage hazards to the public that may occur as a result of trees that are not otherwise cared for properly.

Create more tree friendly growing spaces to accommodate the need for lasting, mature canopy in Downtown Meridian.

Create more diversity in the Downtown tree canopy by selecting a greater variety of appropriate species in Downtown plantings.

**Inform-** promote & foster community development by providing education opportunities to the public & employees.

- ▶ Arboretum
- ▶ Community education classes
- ▶ Brochures/Downloads
- ▶ Workshops
- ▶ Volunteer Programs
- ▶ Enhance Website

**Partner-** continue to build & foster healthy partnerships

- ▶ ACHD
- ▶ Idaho Power
- ▶ Treasure Valley Canopy Network
- ▶ Other cities
- ▶ Downtown Development
- ▶ USDA/ISDA
- ▶ Arbor Day Foundation
- ▶ Non-Profit organizations (CWI, IBG, IDFG, etc.)
- ▶ Local contractors and other businesses

Creating the Meridian Urban Forest Management Plan has helped the City Arborist identify many areas of opportunity where we can continue to grow the Forestry Program without having a substantial impact to the current budget.



Questions?

**Thank you for your time  
and consideration!**





## Our Community of Volunteers

"Life isn't about waiting for the storm to pass.  
It's about learning how to dance in the  
rain. When the world is running down, you  
make the best of what's still around."





**Volunteer Group Projects**

764 Hours!!



\$21,805

14 Projects

292 Project Volunteers



# FLOWER PLANTING



**3300 Flowers!!**

## Sparklight Movie Night



## City Hall Lobby/Park Ambassadors



## Golf Course Ambassador

- 4 Hour Shifts
- 21 Shifts a week
- Trainings
- Incentives





# Pine Street School

## New Faces



**Community Art Party**  
featuring  
**Meridian Symphony Orchestra**

6:30 pm  
Friday, September 10  
Kleiner Park Bandshell

meridiandcity.org/artweek

*Upcoming Events*

Christmas in  
**MERIDIAN**

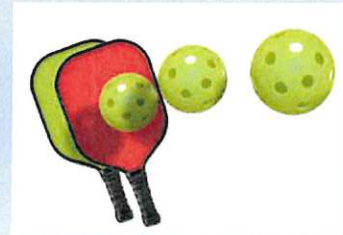
**TRUNK or TREAT**

**Thank You!**  
**Questions?**

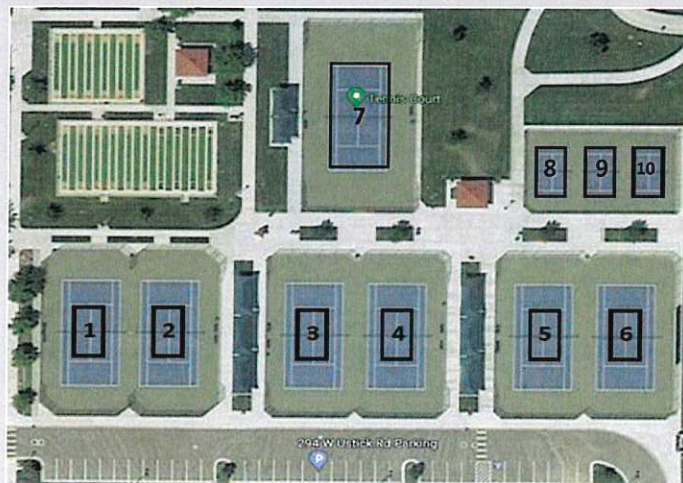
## Settlers Park Tennis Court Conversion Discussion

August 11th, 2021

### Parks and Recreation Commission Meeting



- The Settlers Park Tennis Complex was developed in two phases. The first phase had two dedicated tennis courts. The second phase constructed in 2015 included five additional tennis courts and 3 “quick start tennis courts” for youth play.
- As Pickleball became more popular, the three “quick start” courts were converted to pickleball courts and six of the seven tennis courts became dual striped for both tennis and pickleball. By dual striping the courts, it allowed for the possibility of 7 tennis courts or 9 pickleball courts.



**Court Use (April—September):**

- Courts are shared by both Tennis and Pickleball Players. Primary users are the Boise Area Pickleball Association, Idaho Tennis Association, and the general public.
- Four courts are used for MPR Summer Camps starting mid-June through the first part of August primarily in the morning hours. The three youth courts are used two day a week as well.
- Idaho Tennis Association uses 3 to 4 courts (occasionally 5) in the evening hours for their league games.
- Boise Area Pickleball Association uses the courts Wednesday mornings.
- A mix of Tennis and Pickleball players use the courts daily.
- In the course of a year, all seven courts are booked two times or less for tennis.
- In the course of a year, all 10 courts are booked for pickleball 2 or 3 times. Pickleball courts are taped down where lines do not already exist.



**Proposal:**

The Boise Area Pickleball Association has requested to convert two of the tennis courts into six pickleball courts as shown below and are willing to make a financial contribution to get it done.

**Why do it:**

- Eliminates tennis and pickleball players competing for the same court time. This happens in the summer months with youth tennis camps in the morning and adult tennis leagues in the evenings.
- Timing. All Tennis and Pickleball courts are resurfaced every 5 to 10 years based on use and general wear and tear. Project is in our FY22 budget if passed.
- Still allows for nine pickleball courts and five tennis courts for the public to use.
- Removes dual markings on all courts.
- Removes wear and tear nets as they will not need to raise and lower nets.

**Why not to:**

- It does eliminate two tennis courts.

**Facility Users Included in discussion:**

- Idaho Tennis Association
- Boise Area Pickleball Association



THOUGHTS?

SUGGESTIONS?

QUESTIONS?





# PATHWAY INFILL PROJECTS

## 6 Status Update

Kim Warren, PLA  
Pathways Project Manager

11 August 2021

### ★ Moving Forward



FY 2022  
PATHWAYS BUDGET

**\$500k**

- 6 Infill Projects
- Bridge Cost Share – Quartet Sub
- Urban Land Institute Workshop

2021  
CONSTRUCTION DOCUMENTATION  
Now Underway

BIDDING & AWARD  
Fall/Winter 2021

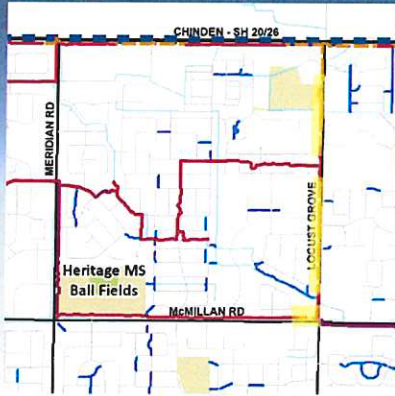
~ \$400k

2022

CONSTRUCTION

As many of the 6 infill projects as we can afford to build

# 1. Locust Grove – McMillan to Chinden



- Phase II Design Beginning– Task Order Complete
- 2 Easements pending @ McMillan and Locust Grove
- Contact/requests made for remaining easements
- Surveying scheduled for remaining easements
- ACHD Coordination meeting requested

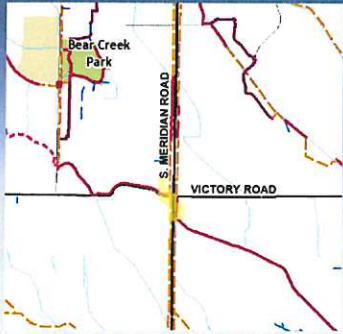
# 2. Five Mile Pathway – Nine Mile Creek to Quartet



- Phase II Beginning- Construction Documents
- Bridge Cost Share Agreement
- Surveying Scheduled
- ACHD Coordination



### 3. Meridian Road at Victory

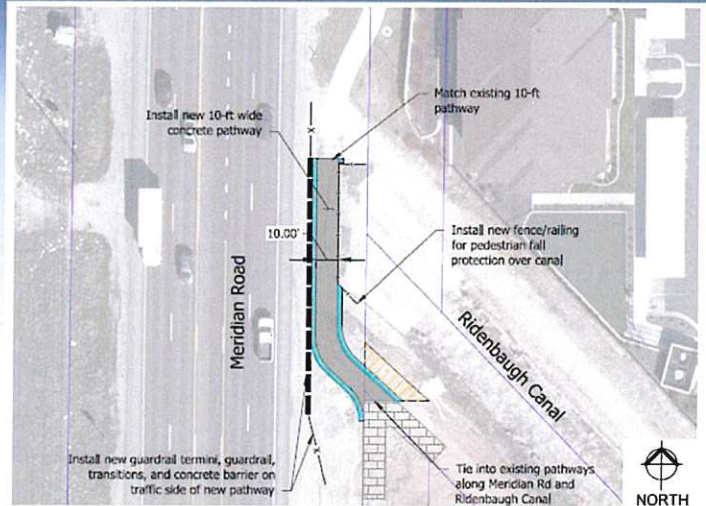


PROJECT CONTEXT

Consultant focus on Meridian Road Pathway over Ridenbaugh Canal (Shown at Right)

NW Corner of Victory & Meridian

- Keep intersection simple
- MPR to follow up on ESMT
- Small paving project



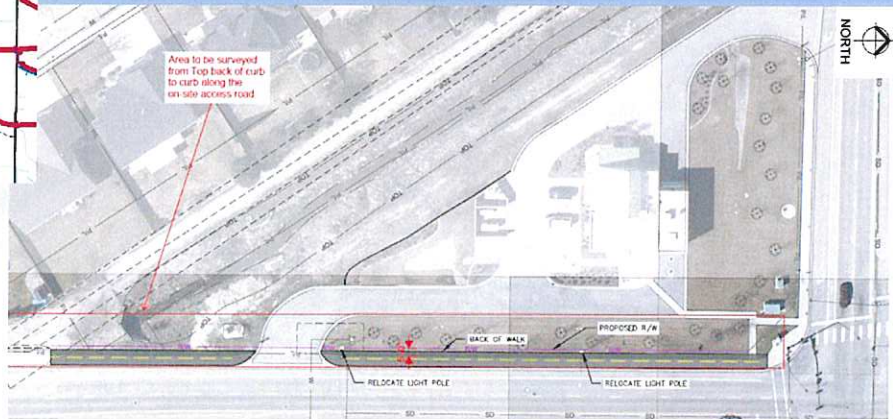
### 4. Five Mile Pathway - Linder & Ustick



PROJECT CONTEXT

SW CORNER OF USTICK & LINDER

- Sidewalk widening to 10'
- Survey Underway
- Easement negotiated

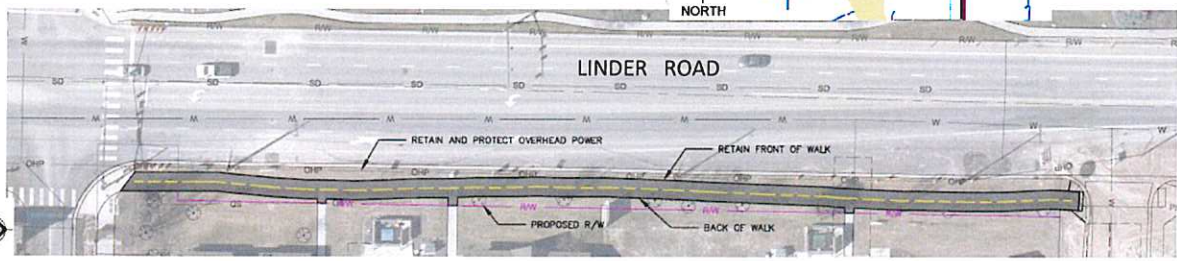
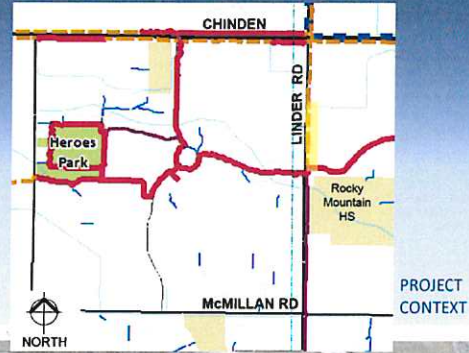




# 6. Linder – Cayuse Creek to Chinden



- Moving into Phase II : Construction Documents
- Blanket easements prepared, coordinated with Owners, awaiting signature
- Surveying scheduled
- Pathway already constructed at Winco, near Chinden

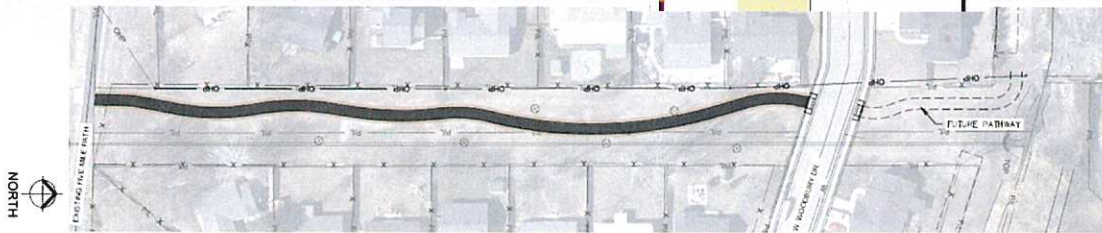


# Creason Pathway

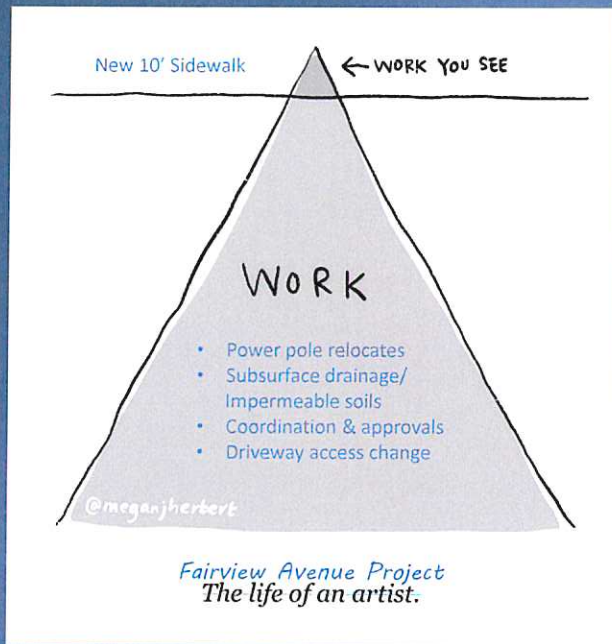


## Pathway Connection Through Waterbury Park Neighborhood

- Originally planned as a crossing of Creason Lateral
- Connect through common area from Creason to Five Mile Pathway
- Easements prepared and awaiting signature
- Task Order complete
- Beginning construction documents soon



# Iceberg Scenario



# Fairview Avenue Connection



- Delineated, safe connection along Fairview Avenue
- Former 'No man's (person's) land'
- Construction mostly complete

# Fairview Avenue Connection



West end, junction with Five Mile Pathway



Looking east to Lakes Place

## Update Pedestrian Underpass at Star Road

### Proposed Cost Share Agreement with ACHD

- Fields District Sub Area Plan
- 3 Contiguous Miles –under major roadways
- Vertical separation of pedestrian/vehicular traffic
- Council expressed support for exploring a Cost Share Agreement

#### Parks and Pathways Framework

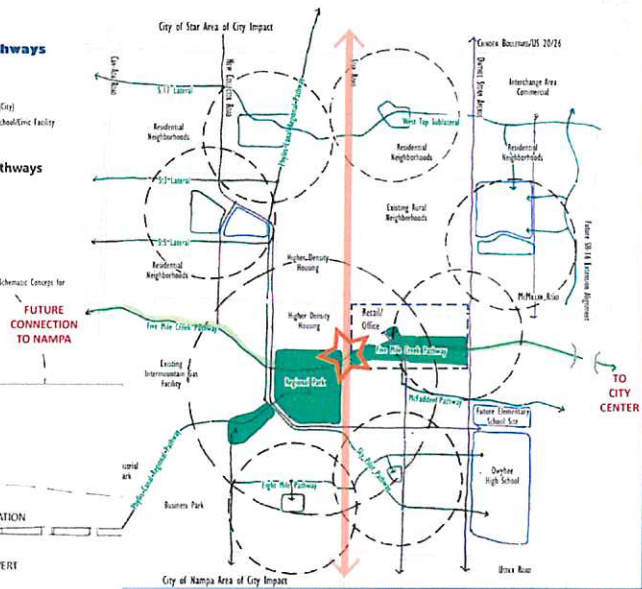
##### Use Type

- █ Parks and Greenways (City)
- Potential Elementary School/Site Facility
- Parks (NMA)

##### Roadways and Pathways

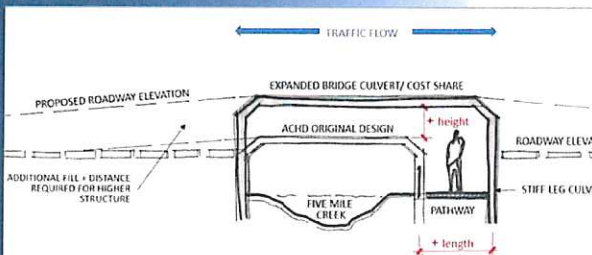
- Off-Street Pathways
- On-Street Pathways
- 1/4-mile walk distance
- 1/2-mile walk distance

Refer to Star/Nampa Schematic Concepts for additional detail



FUTURE CONNECTION TO NAMPA

TO CITY CENTER



PROPOSED ROADWAY ELEVATION

EXPANDED BRIDGE CULVERT/ COST SHARE

ADDITIONAL FILL + DISTANCE REQUIRED FOR HIGHER STRUCTURE

ACHD ORIGINAL DESIGN

FIVE MILE CREEK

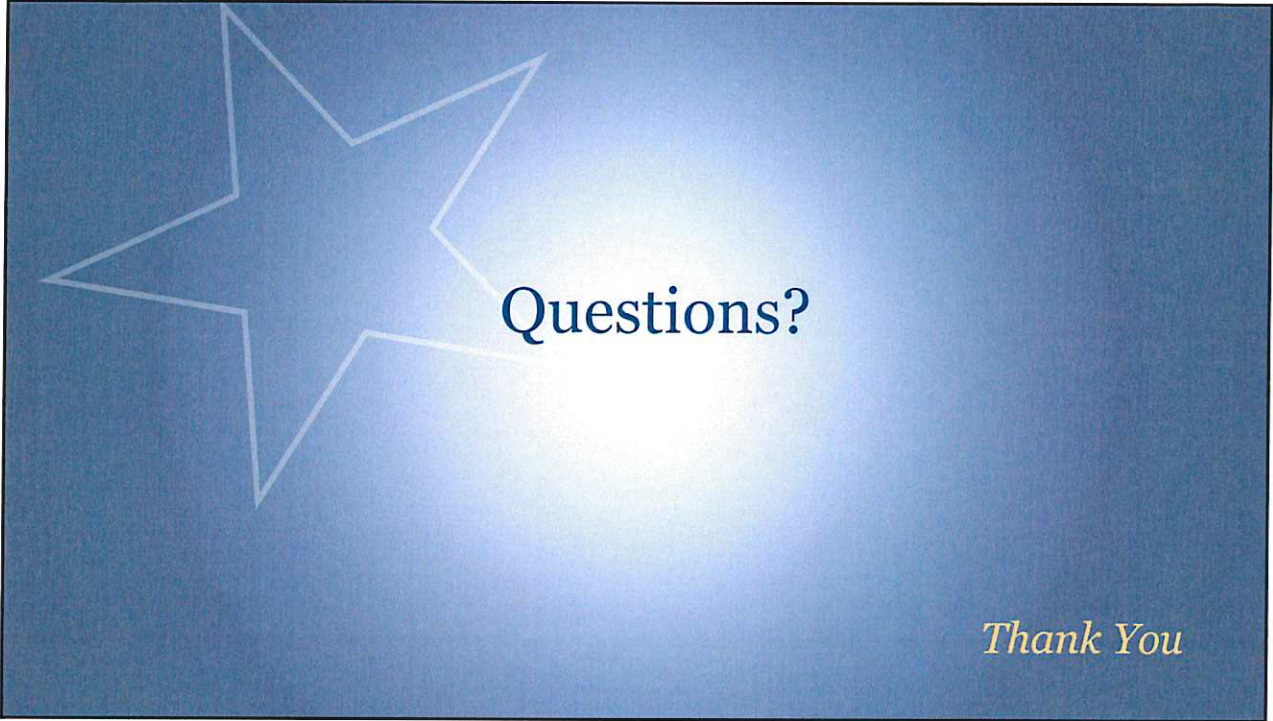
ROADWAY ELEVATION

PATHWAY

STIFF LEG CULVERT

Concept for communication purposes only Not To Scale

Fields District Plan (In Progress)





# Urban Land Institute Panel Opportunity

11 August 2021

8/11/2021



The mission of the Urban Land Institute: Shape the future of the built environment for transformative impact in communities worldwide



8/11/2021





- Global Nonprofit Organization, established 1936
- Education and research institute, member-supported – 45,000 member professionals
- Full spectrum of land use and real estate development disciplines, public and private sectors
- Local councils and projects
- Bookstore/ Publications

Provide Leadership towards:

- Responsible use of land
- Sustaining and creating thriving communities worldwide
- Diversity and inclusion

3/11/2021

## Pathways Opportunity



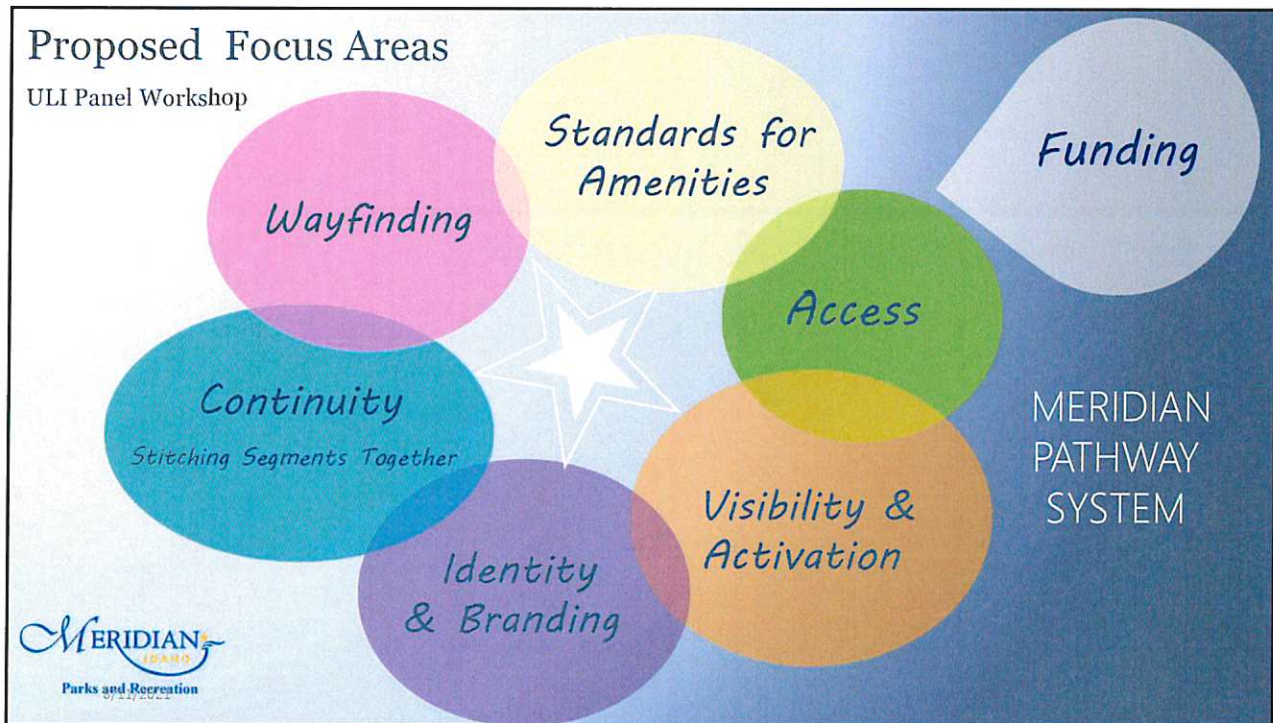
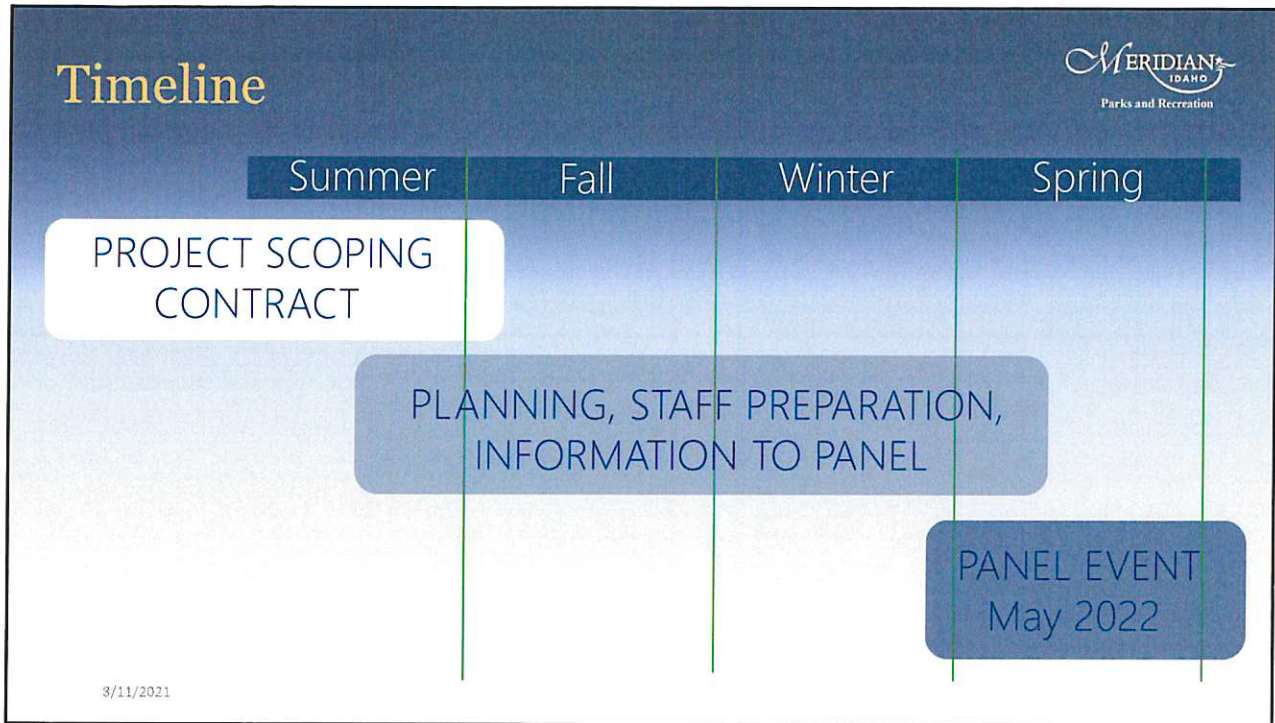
### Host an Advisory Panel in Meridian

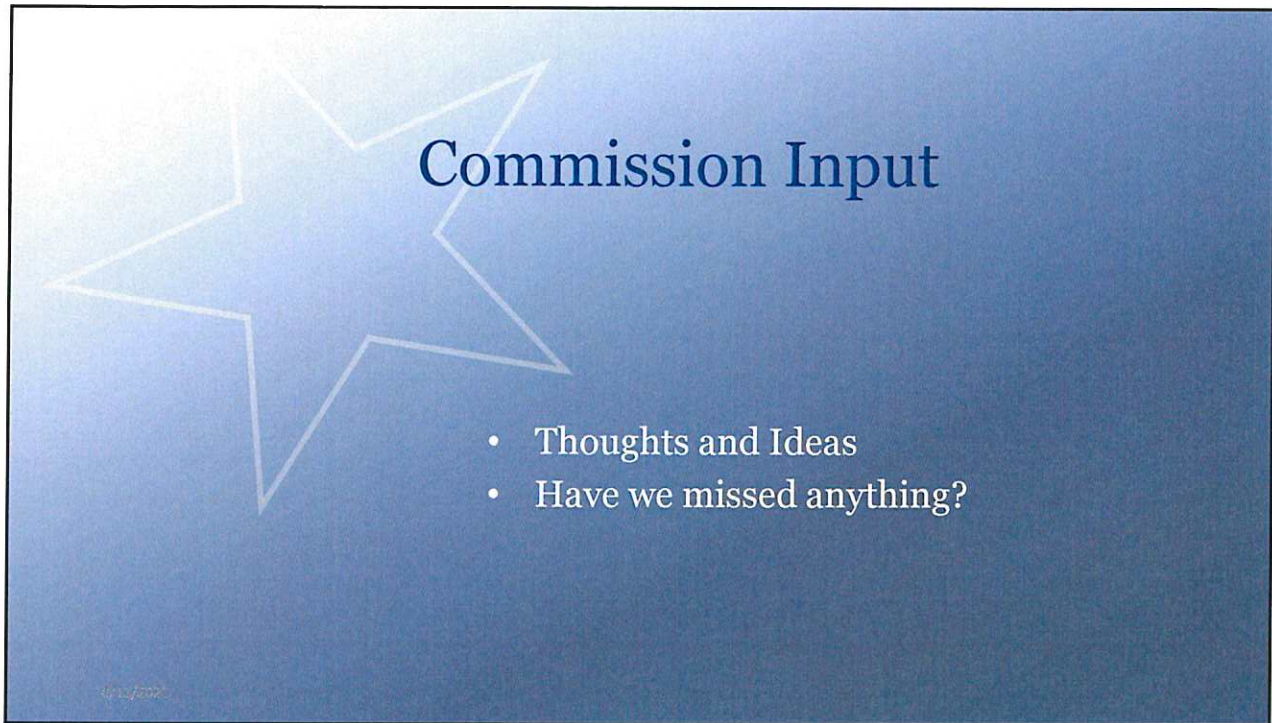
**City's Obligation:**

- Scope of Work, Contract
- No cost for ULI expertise
- City to prepare summary packet for panel
- City to host/make arrangements for – tour, meeting areas, workspaces
- City covers travel costs and some expenses/ Lump Sum Fee



3/11/2021







# Commission Input

- Thoughts and Ideas
- Have we missed anything?

8/16/2021



## Pathways Workshop



1. Point of View
2. Destinations
3. Links between destinations
4. Other connectivity gaps