

EXHIBIT A

Legal Description **Graycliff Estates Subdivision No. 5** **Public Utilities, Pressure Irrigation, and Lot Drainage Easement Vacation**

A portion of the easement located on Lot 12, Block 9 of Graycliff Estates Subdivision No. 5 as shown in Book 129 of Plats on Pages 21016 through 21018, records of Ada County, Idaho, being located in the SE ¼ of Section 25, Township 3 North, Range 1 West, Boise Meridian, City of Meridian, Ada County, Idaho, and more particularly described as follows:

Commencing a point marking the southwest corner of said Lot 12, from which a point marking the southeast corner of said Lot 12 bears S 89°04'16" E a distance of 125.41 feet;

Thence N 64°16'12" E a distance of 11.14 feet to the **POINT OF BEGINNING**;

Thence N 0°27'25" E a distance of 5.00 feet to a point;

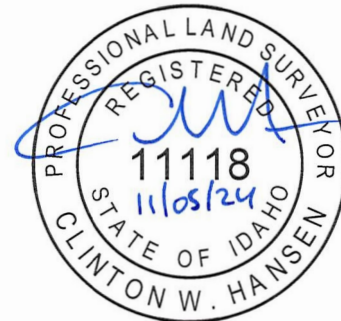
Thence S 89°04'16" E a distance of 110.49 feet to a point;

Thence S 0°55'44" W a distance of 5.00 feet to a point;

Thence N 89°04'16" W a distance of 110.45 feet to the **POINT OF BEGINNING**.

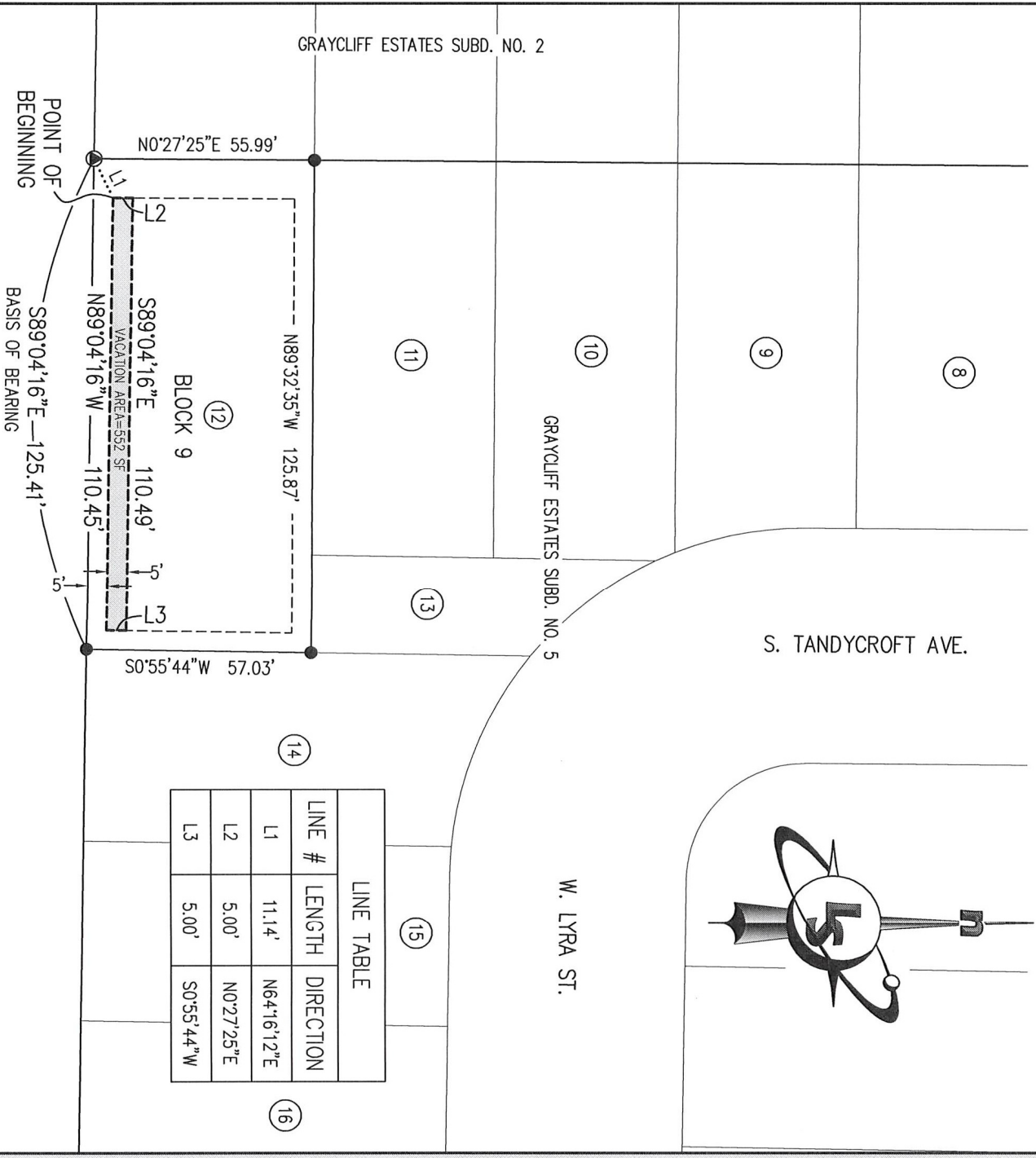
This parcel contains 552 square feet (0.013 acres) more or less.

Clinton W. Hansen, PLS
Land Solutions, PC
November 5, 2024



GRAYCLIFF ESTATES SUBDIVISION NO. 5

PUBLIC UTILITIES, PRESSURE IRRIGATION AND LOT DRAINAGE EASEMENT VACATION
 A PORTION OF THE EASEMENT LOCATED ON LOT 12, BLOCK 9
 OF GRAYCLIFF ESTATES SUBDIVISION NO. 5



LandSolutions
 Land Surveying and Consulting

231 E. 5TH ST., STE. A
 MERIDIAN, ID 83642
 (208) 288-2040 (208) 288-2557 fax
 www.landsolutions.biz