



PARKS & RECREATION COMMISSION

MEETING - MINUTES

Parks Maintenance Shop, 1700 E. Lanark Street, Meridian, Idaho
Wednesday, November 12, 2025, at 4:00 PM

The Meridian Parks & Recreation Commission is a volunteer citizens' group that is created and empowered to advise the City on issues relating to park facilities and recreation programs of the City. Their mission is to gather input from staff and other qualified personnel on issues relating to the creation and design of public parks and open spaces; to listen to public input; and to provide advice and recommendations on parks and recreation related matters to the Mayor and City Council.

ROLL-CALL ATTENDANCE

<u>X</u> Dom Gelsomino, Chair	<u>X</u> Brienne Sandow, Vice Chair
<u>O</u> Jennifer Bobo	<u>X</u> Alan Helms
<u>X</u> Mandi Roberts	<u>X</u> Toren Taylor
<u>X</u> Jo Greer	___ (Vacant)
<u>X</u> Terry Dennington (Arrived at 4:18p.m.)	

Others present were: MPR Department staff—Parks and Recreation Director Steve Siddoway, Park Superintendent Mike Barton, Pathways Project Manager Kim Warren, Administrative Assistant II Rachel Myers, Marketing Coordinator Shelly Houston, Lakeview Golf Course General Manager Ryan Roberts, Deputy City Attorney Emily Kane, Nampa Parks and Recreation Director Cody Swander and Citizen Gina Johnson.

ADOPTION OF THE AGENDA

Commission Chair Dom Gelsomino asked for a motion to adopt the evening's agenda. Commissioner Jo Greer moved to adopt the agenda. Commissioner Alan Helms seconded. All were in favor of the motion.

APPROVAL OF THE MINUTES

1. October 8, 2025, Regular Meeting

Commission Chair Dom Gelsomino asked for a motion to adopt the minutes as presented. Commissioner Jo Greer moved to adopt the minutes. Alan Helms seconded. All were in favor of the motion.

ANNOUNCEMENTS

2. Welcome New MPRC Commissioner Toren Taylor

Commission Chair Dom Gelsomino welcomed Toren Taylor, the cities new Commissioner from the Meridian Youth Advisory Council program.

3. Upcoming Events

Shelly Houston, Parks and Recreation Marketing Coordinator presented the upcoming events.

- A. Winter/Spring Activity Guide – Published on November 12th
- B. Christmas Tree Installation at Generation's Plaza – November 13th
- C. Leaf Bins at City Parks – Available now through December 11th
- D. Initial Point Gallery Exhibit: *Rock, Paper, Scissors, Wood* – Open through November 28th
- E. Santa's Mailbox – November 17th
- F. Angel Tree Toy Drive and City Hall lobby tree goes up – November 24th
- G. Winter Lights Parade – December 5th
- H. Children's Winterland Festival – December 13th

The floor was opened for questions.

- 1. Commissioner Mandi Roberts asked when the arrival time is for those boarding floats.

Shelly responded, stating that the parade usually starts moving at 6:50pm so it is best to get there prior to 6:30p.m.

No further questions were raised from the Commissioners.

4. MPRC Leadership Elections in December

Commission Chair Dom Gelsomino announced that the Parks and Recreation Commission leadership elections will take place in December. This allows everyone the opportunity to serve in a leadership position. The bylaws dictate that the Vice Chair receives an automatic nomination for Chair, and a new candidate for Vice Chair is needed.

5. MPRC All-Commission Goals Brainstorming in December

Meridian Parks and Recreation Director Steve Siddoway stated that every December, the Commission brainstorms new goals for the coming year. He asked the commissioners to submit any revisions, ideas, or changes to the future goals for review at the next Commission meeting.

The floor was opened for questions:

1. Commissioner Alan Helms asked if there were any capital expenditures for the pool this year.

Steve stated that there were no major capital expenditures; however, some heavy maintenance items were completed, such as repairing starting blocks and the backup pump.

2. Commissioner Terry Dennington asked if the Art Master Plan has already been presented.

Steve stated that it has not yet been presented. It will be presented on November 13th, and the Historic Preservation Commission Master Plan will be presented on Friday, November 14th.

OLD BUSINESS ~ NONE

NEW BUSINESS

6. Nampa Parks & Recreation Update

Nampa Parks and Recreation Director Cody Swander provided an update on their pathways and capital improvement projects. Their pathways fall under the Parks Maintenance team, primarily managed by the Maintenance Manager, as they do not have a dedicated pathways coordinator. They also receive assistance from the Public Works department for grant writing and grant administration.

Nampa's first formalized master plan was created in 2011 by Alta Design. This plan included numerous on-street improvements, such as bike lanes, side paths, attached sidewalks, detached sidewalks, and some off-road pathways. The plan was updated again in 2020, which is the current pathways plan being used.

Nampa has a master agreement with the Nampa/Meridian Irrigation District, which covers roughly three-quarters of the city. This agreement allows the city to place urban pathways over the irrigation district's maintenance easements. The relationship has gone well over the years. If the irrigation district needs to make repairs or access parts of the pathways, they are allowed to do so, often with the city completing any necessary repairs to restore the pathways to working order. Another pathway is Rails to Trails, which is an old rail line that has been converted into a pathway.

There is not a lot of budget funding for pathways. Impact fees are a major driver for Nampa's capital projects. The city has made a conscious decision not to use impact fees to build pathways because they do not want developers coming back to request exactions for

pathways that have already been built. Instead, impact dollars go toward other capital projects, while funding from home developers supports the parks. As a result, the city relies on grants and awards to help fund pathways.

This past year, the Grimes Pathway was completed. In the area where it was constructed, it is likely the pathway that will be known as Rails with Trails, located just outside of Union Pacific's easement.

Following the master plan, pathways are built by the city according to building and construction standards. They are also often constructed through the planning and zoning process when development occurs. When a subdivision is being built adjacent to one of the master plan pathways, the city requests a 20-foot easement and requires the builder to construct the pathway according to the standards and designs outlined in the master plan. This can be frustrating for community members because of the starts and stops of pathways throughout the city; however, it is necessary because the city does not have sufficient funding to complete all the pathways itself.

One of the larger pathway connections that the city is currently working on is the Ore Pathway. This pathway follows the Ore Drain in West Nampa, connecting Wilson Pathway to the north with Edward's Pathway to the south.

Nampa previously asked for land to be deeded and dedicated to the city for pathways on either side of the drains. This resulted in high weed abatement and weed control costs for the city. Roughly 10 years ago, the city changed this process and began obtaining permanent pathway easements instead. With this approach, the property remains the property owner's responsibility, allowing them to landscape the pathways as they wish, while the city provides maintenance on the asphalt only.

Meridian Parks and Recreation Pathways Project Manager Kim Warren stated that an updated copy of Nampa's GIS map is needed. This prompted discussion among Steve Siddoway, Kim Warren, Mike Barton, and Cody Swander about potential pathways connecting Nampa to Meridian and aligning them on the same sides of streets for easier connectivity. A future meeting will be scheduled to discuss this further, which would benefit both cities by creating continuous pathways that run from city to city.

Some of the larger capital improvement projects currently underway are:

- Centennial Golf Course irrigation project – A \$3.8 million bid was received and will be presented to Council on December 1st.
- Purchasing property for a 40-acre soccer park – The Nampa School District is interested in a property swap. This item will be presented to Council on December 20th.
- West Park – Adding bocce ball, cornhole, and a horseshoe pit.
- Midway Park – Phase 3 is currently underway.

The floor was opened for questions. No further questions were raised from the Commissioners.

7. Lakeview Golf Course Update

Lakeview Golf Course General Manager/Head Golf Professional Ryan Roberts presented a PowerPoint providing an overview of the golf course's condition when the city first obtained it versus how it is now.

Lakeview is not only a golf course but also a restaurant and event venue, hosting bingo nights and other activities. When the city first acquired the golf course, it was not in good condition. Key improvements include:

- Irrigation System – Water is now evenly distributed across the course, resulting in fuller, healthier grass that can withstand daily use.
- Golf Carts – The new golf carts increase the pace of play, improve the player experience, enhance reliability, reduce maintenance costs, and provide consistency for return customers.
- Car Path – The gravel previously generated excessive noise and dust when driven on. The improvements have reduced noise, decreased wear and tear on the course, improved traffic flow, and significantly reduced dust.
- Equipment – New mowers reduce the time required for lawn care, allowing for more gameplay and better-looking grass.
- Clubhouse – Outdated carpet and furniture were replaced, creating a modern look and allowing events to be comfortably hosted.
- Bathrooms – The removal of porta potties and construction of new bathrooms provides cleaner and more attractive facilities.

These upgrades allow events, tournaments, classes, and camps to run smoothly and enhance the overall experience for community members.

In the years prior, Lakeview would run through 30,000 rounds of golf a year, this year we did 51,000 rounds.

Please see the attached PowerPoint presentation for additional information regarding this presentation.

STAFF REPORTS

8. MPR Staff

Director Steve Siddoway reported on the following:

1. Christmas Parade - Steve thanked the commissioners for their RSVPs and reviewed the parade logistics.
2. Destination Downtown - MDC will be presenting to City Council over the course of several months. Steve has prepared comments on the proposed goals that are relevant to Parks & Recreation.
3. Strategic Plan - The Director team and City Council are working on an update to the City's Strategic Plan.

4. Sponsorships – Our team is working on a new sponsorship program for Homecourt.
5. New Commissioner - We expect to have a new commissioner, Helen Muscolo, at our next meeting. She will fill the seat vacated by John Nesmith.

Steve also summarized the Recreation staff report as follows:

1. Christmas Events - The Recreation Division is focused on all things related to Christmas in Meridian right now, from the parade and tree lighting to the Children's Winterland Festival, the Angel tree, City Hall decorating, and more.
2. Sports - Fall/winter sports are in full swing.
3. Arts & Culture - The Arts Master Plan and Historic Preservation Plan have both had recent presentations to their commissions.
4. Winter Classic - The fundraiser tournament was held last weekend, with great success. Proceeds will benefit the children at the Meridian Head Start program.

The floor was opened for questions. No further questions were raised from the Commissioners.

Parks Superintendent Mike Barton reported on the following:

1. Working on expanding the dog park in Discovery Park
2. City Christmas tree is coming to Generations Plaza
3. Community Center constructability reviews
4. Lakeview Golf Course Superintendent hiring
5. Tammy Street Park Playground is ordered

The floor was opened for questions. No further questions were raised from the Commissioners.

Pathways Project Manager Kim Warren reported on the following:

1. Fivemile Creek Pathway at McDermott/SH-16 – All asphalt paving done for now. Ramps complete on Glassford Ave. Will finalize concrete paving in the spring after ITD finishes some of their SH-16 related work that overlaps the east end of our project site.
2. Rail With Trail – Bids were opened on November 3rd. Will request council approval to amend budget and formally award construction contract at December 2nd council meeting.
3. Pathway Master Plan update – In-person work session with consultant planned November 24th & 25th. Aiming to have 90% draft ready for review by end of January 2025.
4. Fivemile Trail-hub restroom – Contract awarded. Contractor plans to start sitework in February to prepare for May restroom building arrival.
5. Plan Review – Abundant applications coming in, as we always do this time of year.

The floor was opened for questions. No further questions were raised from the Commissioners.

NEXT MEETING ~ Wednesday, December 10, 2025, at 4 PM

ADJOURNMENT

Commissioner Chair Don Gelsomino called for a motion to adjourn the meeting. Commissioner Jo Greer moved to adjourn. Commissioner Terry Dennington seconded. All were in favor of the motion.

There being no further business, the meeting adjourned at approximately 5:47p.m.

2025 All-Commission Goals:

1. Participate in the design and programming of a new Community Center.
2. Support development of a connected pathway system across the City of Meridian, with a focus on user experience amenities and improved connectivity.
3. Participate in the development of the Pathways Master Plan Update.
4. Continue to provide feedback for ongoing park improvements and enhancements.
5. Participate in the partnership with the Meridian Arts Commission to add theming and identity reinforcing art in Meridian parks and along pathways. Focus this year on Chateau Park and the Arts Master Plan.
6. Support future improvements at Lakeview Golf Course, including new on-course restrooms.
7. Pursue a future park site in Northwest Meridian "Fields District."
8. Engage other task forces, commissions, entities, and agencies through workshops and other outreach for partnership opportunities.
9. Support ongoing operations of the Meridian Pool.
10. Pursue improved communication tools and opportunities to engage the community and diverse interests.

Nampa Parks and Recreation Department



City of Nampa

BICYCLE & PEDESTRIAN MASTER PLAN

JANUARY 2020

Nampa Bicycle and Pedestrian Master Plan

- Nampa's 1st Bicycle & Pedestrian Master Plan – Separate from Nampa Transportation Master Plan
- Alta Planning + Design - Consultant
- Created & Adopted 2011
- Updated in 2020
- Led by Nampa Bicycle & Pedestrian Committee – Importance of an Advocacy Group
- Plan Sets Design Standards, Locations, Connections, Priorities, and Recommendations
- Online at cityofnampa.us

A map of Nampa, Idaho, overlaid with a network of colored dashed lines representing development pathways. The pathways are color-coded: blue for major waterways, green for secondary waterways, yellow for local roads, and pink for other infrastructure. Black dots are scattered throughout the map, indicating specific project locations. Labels on the map include 'Elijah Drain', 'Redhawk Golf Course', 'West Park', 'Nampa Municipal Airport', 'Pidgecrest Golf Club', 'Ada Canyon', and 'Tenmile Creek'. Highway numbers 55, 30, and 65 are also visible.


Pathway Funding and Development Process

- Primarily Following Nampa's Waterways
- Master Agreement with NMID
- Development Driven Expansion
- Parks Manager Plat Reviews
- City Identified Projects Based on Easement Acquisition and Funding
- Grant & City Funding vs Impact Fee Funding
- Updates to City Code Dictating Bicycle and Pedestrian Infrastructure – example: Required Side Paths on all Arterial Roadways

A paved pathway winds through a lush green park. The path is made of dark asphalt and curves gently to the right. On the left side of the path, there are several large, mature trees with thick trunks and dense green foliage. On the right side, there is a grassy area with more trees, some of which are younger and thinner. The sky is visible through the branches of the trees, showing a clear blue color. The overall scene is peaceful and scenic, representing a typical urban park environment.


Recent & Upcoming Pathway Projects

- Grimes Pathway Extension to 11th Avenue North – Grant Funded
- Stoddard Pathway Extension to 2nd Street South – Grant Funded
- Orr Pathway (Edwards Pathway to Wilson Pathway) – Design & Easement Acquisition Funded in FY26 – Grant Funded
- Concept Designs for Garrity Blvd. Side Path, 11th Ave. North Side Path, 6th Street North Side Path, Indian Creek Pathway 2nd Ave. North to Eastern Endpoint – City Funded
- Multiple Development Driven Segments throughout the city, mostly North Nampa – Developer/Growth Funded



Future Connections to Meridian

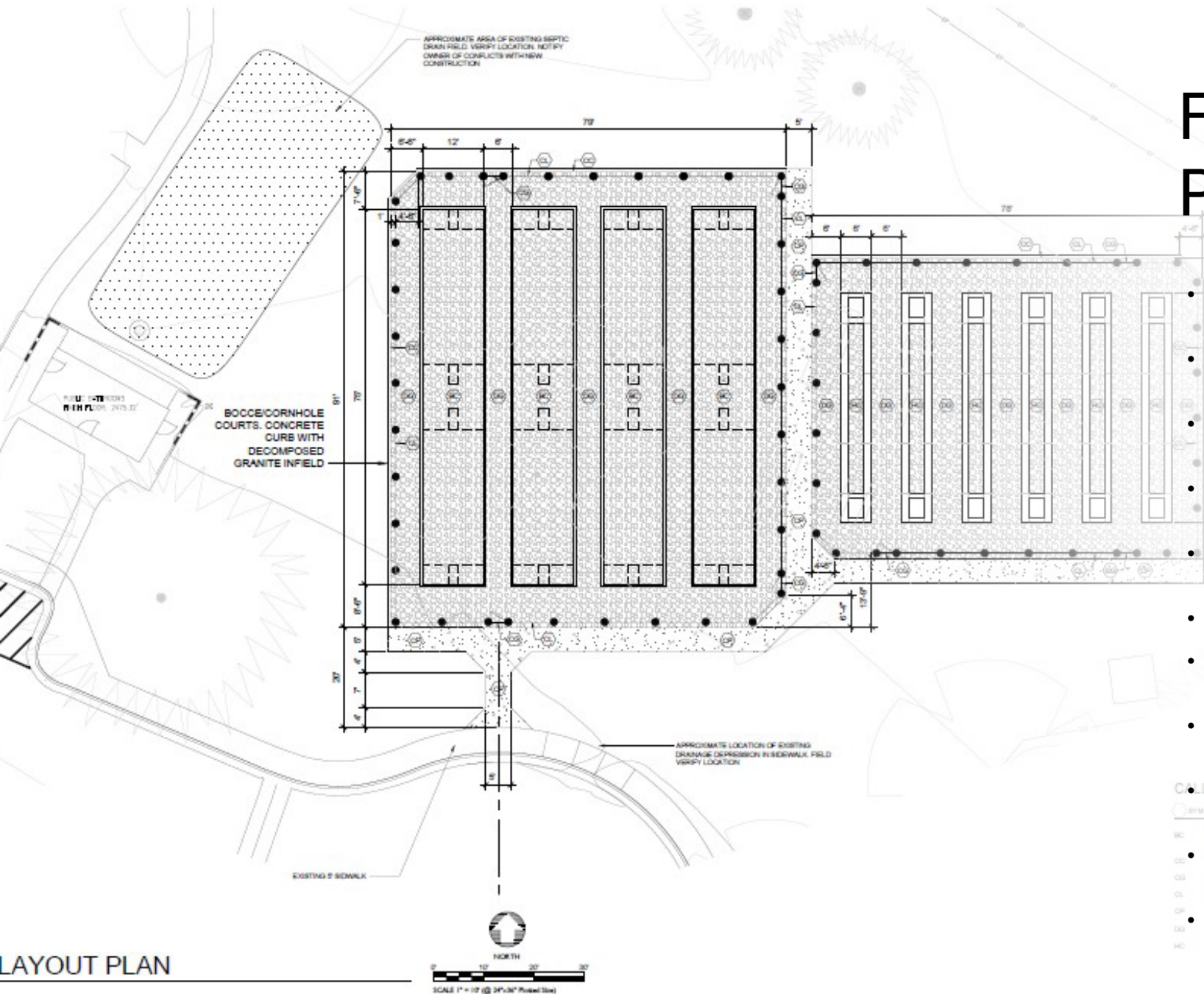
- Boise River Greenbelt – Planned for the south side of the river
- Nine Mile Pathway - Undeveloped
- Ten Mile Pathway – Crosses Hwy 16 on the south side of Ten Mile Creek
- Purdam Pathway – Limited potential to follow Purdam Drain since crossing Hwy 16 is not in the design (possibly merged with Rails w/Trails along UPRR)
- Rail with Trail (UPRR Railway) – Grimes/Undeveloped
- Mason Creek Pathway
- Amity Pathway - Undeveloped
- Ridenbaugh Pathway - Undeveloped
- Indian Creek Pathway – Kuna?
- Multiple Side Path into Meridian (Joplin Rd., Locust Rd., Lewis Ln.)



FY 26 Capital Projects

- \$5M – Centennial Golf Course Irrigation (Enterprise Fund)
- \$3M – Soccer Park Property (Impact Fee Funded)
- \$560,000 – Orr Pathway Design & Easements (Grant Funded)
- \$550,000 – West Park Irrigation System (General Fund)
- \$401,919 – Maintenance Equip. & Vehicles (General & Enterprise Fund)
- \$300,000 – West Park Horseshoe/Cornhole/Bocce Courts (Rollover from FY25) General Fund
- \$368,600 – Kohlerlawn Cemetery Scattering Garden (General Fund)
- \$200,000 – Brandt Irrigation Pumpstation (Impact Fee Funded)
- \$204,465 – Rec Center Equip. & Flooring (Special Revenue Fund)
- \$166,000 – Lakeview Pool Replaster (General Fund)

FY 26 Capital Projects Continued



- \$160,000 – Welcome to Nampa Signs (General Fund)
- \$140,000 – Lions Shelter Replacement (General Fund)
- \$107,800 – Brandt Pickleball Court Lighting (General Fund)
- \$87,000 – Amity Dog Park Grading Design (Fundraiser Funded)
- \$85,000 – Maplewood Playground Replacement (General Fund)
- \$62,000 – Asphalt Maintenance (General Fund)
- \$50,000 – Future Soccer Park Concept Design (Impact Fee Funded)
- \$40,000 – Golf Course Tee Renovations (Enterprise Fund)
- \$26,000 – Train Asbestos Abatement (General Fund)
- \$25,000 – Midway Phase 3 Park Site Furnishings (Impact Fee Funded)
- **\$11,533,784 - Total**

Questions?



Cody Swander
Nampa Parks and Rec Director

swanderc@cityofnampa.us

208-468-5858

131 Constitution Way
Nampa, ID 83686



Lakeview Golf Course Update

Our story, progress, and impact.

Irrigation System Upgrade

- Our new irrigation system changed everything. We're using less water, distributing it more efficiently, and delivering the best turf conditions we've seen in years. This supports long-term sustainability and protects the course for the next 20–30 years.



New Golf Carts



Upgrading to our new fleet has been a major improvement for both golfers and operations:



Enhanced reliability and reduced maintenance costs



Improved pace of play and overall player experience



Modern features (USB ports, smoother ride, quieter operation)



Consistent presentation that reflects positively on the course and city



Increased customer satisfaction and repeat play



Concrete Cart Paths

- New concrete paths improved traffic flow, reduced wear and tear, and upgraded the golfer experience. This also supports better tournament traffic and all-weather play.





Maintenance Equipment

- Upgraded mowers and equipment allow our crew to prep the course faster and safer each morning. These upgrades directly improve daily playing conditions and efficiency.



Clubhouse Improvements

- Functional upgrades inside the clubhouse improved check-in flow, created a cleaner and more modern look, and strengthened our ability to host events and tournaments.



New On-Course Bathrooms

- Brand-new restrooms added on holes 5, 8, 11, and 17. Clean, durable, and a huge boost to golfer comfort and the overall experience.





Tournaments, Programs, Events

- Expanded programs across juniors, ladies, leagues, and veterans. Increased tournaments and community events. Lakeview continues to grow as a community hub.



Our Staff

- From sunup to sundown, our trained, organized team makes the entire operation run at a high level. They are the heartbeat of Lakeview.



Rounds & Revenue Growth

- Every year, our rounds and revenues continue to increase. Demand is up across all segments, and Lakeview remains one of the busiest and most accessible courses in the valley.



Power Limit & Next Phase

- Lakeview has reached new heights - stronger turf, better playability, and more community engagement.
- To continue this success, we must recognize our operational power limit - balancing maintenance, staff capacity, and infrastructure longevity.
- The next phase: reinvestment into staff development, continued facility upgrades, and sustainable growth to meet rising demand.
- Together, we can ensure Lakeview stays the gem of Meridian for years to come.





Questions?