



PARKS & RECREATION COMMISSION

REGULAR MEETING • MINUTES

City Hall Council Chambers, 33 East Broadway Avenue, Meridian, Idaho
Wednesday, January 11, 2023 • 5:30 p.m.

The Meridian Parks & Recreation Commission is a volunteer citizens' group that is created and empowered to advise the City on issues relating to park facilities and recreation programs of the City. Their mission is to gather input from staff and other qualified personnel on issues relating to the creation and design of public parks and open spaces; to listen to public input; and to provide advice and recommendations on parks and recreation related matters to the Mayor and City Council.

Roll-Call Attendance

Commission President Keith Bevan called the meeting to order at approximately 5:31 p.m.
MPR Administrative Assistant II Rachel Myers took roll-call attendance as follows:

<u>X</u> Keith Bevan, President	<u>X</u> Elle Hood
<u>X</u> Mandi Roberts, Vice President	<u>O</u> Mike Medellin
<u>X</u> Jennifer Bobo	<u>O</u> John Nesmith
<u>X</u> Dom Gelsomino	<u>O</u> Brandon Simpson
<u>X</u> Jo Greer	

Others present were: MPR Department staff—Director Steve Siddoway, Recreation Manager Garrett White, Parks Superintendent Mike Barton, Marketing Coordinator Shelly Houston, and Arts & Culture Coordinator Cassandra Schiffler; Deputy City Attorney Emily Kane; and Art Thatcher with BerryDunn.

Adoption of the Agenda

Commission President Keith Bevan entertained a motion to adopt the agenda as presented. Commissioner Dom Gelsomino moved to approve the agenda. Commission Vice President Mandi Roberts seconded. All were in favor of the motion.

Approval of the Minutes

1. December 14, 2022 Regular Meeting – Keith Bevan

Commission President Keith Bevan entertained a motion to adopt the minutes as presented. Commissioner Dom Gelsomino moved to approve the minutes. Commission Vice President Mandi Roberts seconded. All were in favor of the motion.

Announcements

2. Upcoming Events – Shelly Houston

MPR Marketing Coordinator Shelly Houston provided a City of Meridian Events flyer and highlighted the events noted, which is attached to these meeting minutes.

New Business

3. Arts & Culture Update – Cassandra Schiffler

MPR Arts & Culture Coordinator Cassandra Schiffler provided an update about arts and culture projects and programs in Meridian via a PowerPoint presentation. Copies of her slides are attached to these meeting minutes.

Commission Feedback:

- **Keith Bevan** – He thanked Cassandra and added she does a lot!
- **Jo Greer** – She provided kudos to Cassandra.
- **Mandi Roberts** – She expressed her appreciation for City Council lifting the \$50,000/year cap to allocate 50 cents per Meridian resident to Meridian Art in Public Spaces (MAPS) funding. She added art should grow with the community, as well as opportunities and funding for art. Has Cassandra had a chance to analyze the types of artwork and the budget for those? Is it a sufficient amount? *Cassandra will adjust the budget based on the new figures and do some planning to see what is possible. Fortunately, this budget was carried forward from last fiscal year.*

4. Seasons Park Identity and Theming – Cassandra Schiffler

MPR Arts & Culture Coordinator Cassandra Schiffler gave an overview of project plans for theming and identity by Trademark Design for Seasons Park via a PowerPoint. Copies of her slides are attached to these meeting minutes. She presented the following options concerning park signage and the picnic shelter design:

FRONT ENTRANCE SIGN MOCKUPS



After much discussion and feedback, the general consensus of the Commission was they preferred Options #1 and #3 above. The Commission would also like MPR staff to consider any potential issues with climbing on the sign.

PICNIC SHELTER DESIGN MOCKUPS



After much discussion and feedback, the general consensus of the Commission was they preferred Option #1 above.

5. Pathways Update – Mike Barton

MPR Parks Superintendent Mike Barton provided an update on Meridian’s pathways in the form of a PowerPoint presentation. Agenda items included Pathways Map enlargements, current and recently completed project highlights, and discussion of a new Pathways Map for adoption. Copies of his slides are attached to these meeting minutes.

The PowerPoint will be emailed to the Commissioners. Their homework assignment is to review his PowerPoint and the Excel list of the 518 changes and provide any feedback directly to Mike concerning the new, proposed Pathways Map. Mike urged the Commissioners not to discuss their comments with one another outside of this meeting.

The goal of the MPR Department is to compile any comments received from the Commission (if applicable), update the Pathways Map with their changes, bring it back to the Commission for a quick summary at the March Commission meeting, and then take it forward to Council for their consideration for adoption.

6. MP Commissioner Jo Greer Recognition – Mike Barton & Steve Siddoway

MPR Parks Superintendent Mike Barton presented an award plaque to outgoing Commission President Jo Greer. On behalf of the MPR Department and Commission, he thanked Jo for her service.

MPR Director Steve Siddoway (via Zoom) thanked Jo Greer for her ongoing service to the Commission. He expressed it has been great to have such a dedicated person at the head of the MPR Commission the last two years. She finished her first year and then offered to stay on for a second year in a row. He appreciates her leadership and all of her volunteering.

Mike and Jo posed for a photo.

Old Business

7. Meridian Parks and Recreation Master Plan Update [Action Item]– Art Thatcher

Last month, Art Thatcher presented to the MPR Commission a PowerPoint highlighting a lot of the updates and changes regarding the Master Plan Update over the past year. The final draft of the plan was included in the meeting packets that evening. The Department is seeking a formal recommendation of approval to take to the City Council on January 24, 2023.

Commission President Keith Bevan entertained a motion to send along the Meridian Parks & Recreation Master Plan Update to City Council with a recommendation for approval.

Commissioner Dom Gelsomino moved to send along the Meridian Parks & Recreation Master Plan Update to City Council with a recommendation for approval. Commission Vice President Mandi Roberts seconded. All were in favor of the motion.

8. Discovery Park Phase 2 Bike Park Update – Mike Barton

MPR Parks Superintendent Mike Barton presented an update about the bike park design associated with Phase 2 construction of Discovery Park. Copies of his slides are attached to these meeting minutes.

Commission Feedback:

- **Jo Greer** – With the new/updated plan, it appears to be much more efficient. It made sense to her.
- **Mandi Roberts** – She liked the scale of the bike park conceptual plan. It seems to fit the overall park design better; it’s not overwhelming. She likes the idea of the monitored use and in the future look at potential expansion and adding elements. Is the toddler track already added in the concept? *Yes. There are two different age groups but are next to each other.*
- **Keith Bevan** – Did the designers provide any idea of what the capacity could be for the number of people being on the track at the same time? *No, but Mike will find out.*
- **Jennifer Bobo** – What will the maintenance of the bike park look like? Will staff have to constantly be out on the track rebuilding the dirt? *The very top surface will be clay mixed with a polymer, making this a special blend of topsoil. It will hold up well. When it is wet outside, the best practice is to close the area. In general, there will be a fair amount of maintenance.*

Workshop ~ NONE

Staff Reports

9. MPR Staff

Director Steve Siddoway reported on the following:

- MPR Master Plan – The big focus over the last month has been getting to the finish line of the Master Plan with the MPR Commission.
- Activities – There were many activities held over the holidays, which were touched on at last month’s Commission meeting.
- Golf Course – There is a lot of work going on at the Lakeview Golf Club.
- Pool – MPR staff members are gearing up for the next season.

Parks Superintendent Mike Barton reported on the following:

- Discovery Park Phase 2 – Crews made a lot of construction progress up until Christmas of 2022. The project has slowed down somewhat since then. The lights on the ball fields are up in the air. The parking lot is finished. Crews are working on irrigation, spreading topsoil, and the concessions building. The quality is top-notch!

Adjourn

Commission President Keith Bevan entertained a motion to adjourn the meeting. Commissioner Dom Gelsomino moved to adjourn. Commission Vice President Mandi Roberts seconded. The vote was unanimous and in favor of the motion.

There being no further business, the meeting adjourned at approximately 7:13 p.m.

(AUDIO & VIDEO ON FILE OF THESE PROCEEDINGS)

APPROVED:

KEITH BEVAN, PRESIDENT

_____/_____/_____
DATE

MANDI ROBERTS, VICE PRESIDENT

/rem

Attachment:

- 1) Flyer: City of Meridian Events (1 page)
- 2) PowerPoint: Arts & Culture Update/Seasons Park Identity & Theming (19 pages)
- 3) PowerPoint: Pathways Update (14 pages)
- 4) PowerPoint: Discovery Park Phase 2 Bike Park Update (4 pages)

CITY OF MERIDIAN

2023



Initial Point Gallery – Meridian City Hall

New Exhibits Open Feb 7, March 7, April 4,
May 2, June 2, July 11, Aug 1, Sept 19, Oct 3,
Nov 7

Meridian Public Safety Academy Begins

Thursday, March 30

Do the Right Day

Thursday, April 6

Meridian Main Street Market

Saturdays, April 15 – October 14

Prescription Drug Takeback

Saturday, April 22

Trash or Treasure

April 29 & 30

Meridian Spring Clean-Up

May 1 – 5

Unplug and Be Outside

May 13 – 19

Memorial Day Ceremony

May 29

Sparklight Movie Nights

June 2, 16, 30, July 14, 28, August 11

Public Works Week Expo

June 7

Kleiner Park Live Concerts

June 9, 23, July 7, 21, August 4, 18

Meridian Pool Season Opens

Monday, June 5

Gene Kleiner Day

Saturday, June 10

Meridian Dairy Days

June 21 – 25

Independence Day Celebration

Tuesday, July 4

National Night Out

Tuesday, August 1

Firefighters' Salmon BBQ

Friday, August 4

Concerts on Broadway

August 26, September 9 & 23

Meridian Art Week

September 16 – 23

Recovery Day Breakfast

Thursday, September 28

Public Safety Day Open House

To Be Announced

Trunk or Treat

Thursday, October 26

Rake Up Meridian

To Be Announced

Veterans Day Ceremony

Saturday, November 11

Christmas in Meridian

Events/Dates to be Announced

NOTE: Schedule subject to slight revisions



Find details at meridiancity.org/events
or visit meridiancity.org/calendar to view these
and additional local events.

Arts & Culture Coordinator Report to the Parks and Rec Commission 1-11-23

Cassandra Schiffler

Meridian Arts Commission

To develop, advance, and nurture all facets of the arts and to enhance the quality of life for Meridian residents and its visitors.

Bonnie Zahn Griffith, Chair
Jessica Peters, Vice Chair
Natalie Schofield, IPG Chair
Bobby Gaytan, Public Art Committee Chair
Tom Vannucci
Jenifer Cavaness-Williams
Lizzie Taylor
Patrick O'Leary
Hannah Scoville, Youth



&

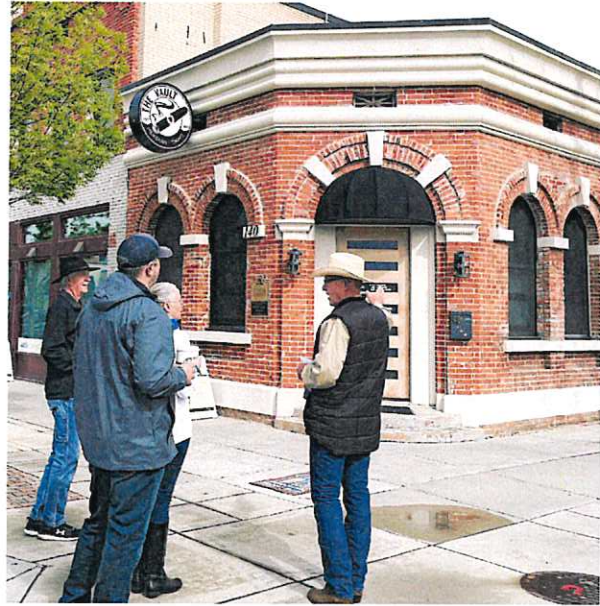
Historic Preservation Commission

To preserve the character and fabric of historically-significant areas and structures within the City of Meridian to honor and preserve its rich heritage for future generations.

Blaine Johnston, President
Destinie Hart, Vice President
Pam Jagosh
Jody Ault
Jack Keller, Youth



Historic Preservation Projects

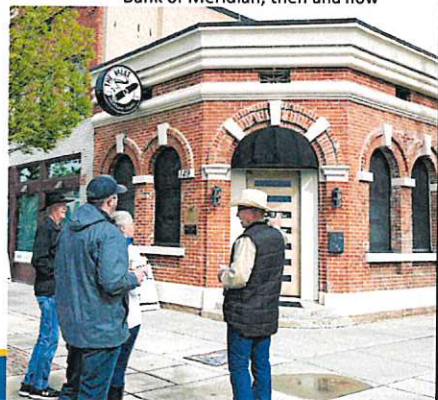


HISTORIC PRESERVATION Projects: May is Preservation Month

This year, we went back to in person events. We had walking tours led by HPC President Blaine Johnson, and a special presentation was given in City Hall about the history of the Southwest Idaho Railroads.



Bank of Meridian, then and now



Historic Preservation Projects: Virtual Tours

We partner with Hull Film to create virtual tours of various Meridian History sites

Completed Sites: Meridian City Hall/Creamery (City Hall views, History Center, Main and Broadway Street), Pine Street School (exterior and interior), Black Cat Farm, Meridian Speedway

2022 Sites Added: Downtown areas along Idaho Street, near Centennial Park/Community Center, along Idaho Street between 4th and 5th, Highway 16

2023: Egger's Farmstead on Black Cat Road

<https://hullfilm360.com/projects/meridian/tour13/>



Historic Preservation Projects: Self-Guided Walking Tours

A self-guided Meridian Historic Walking Tour is available year-round. Free booklets with a map and interpretive information are available at Meridian City Hall. For an enhanced Historic Meridian Downtown Walking Tour experience, download the Meridian Historic Tour mobile app for [iPhone](#) or [Android](#) to enjoy additional photos, videos and narratives about each property while you walk.



Clara Hill House

Historic Preservation Projects: National Registry

Meridian Speedway

The National Park Service (NPS) recently returned the Speedway nomination to the Idaho State Historic Preservation Office (SHPO) and informed them that it needs some additional work before the property can be listed. SHPO is hopeful that the property will be listed once the revisions to the nomination are complete.



Historic Preservation Projects: Reconnaissance Survey of North Main Street

In September 2022, TAG Historical Research and Consulting completed the first phase of a two-phase reconnaissance-level survey of selected streets in Meridian.

Objective: to identify eligible or potentially eligible properties the National Register of Historic Places.

The survey includes approximately 37 city blocks (with approximately 400 properties) located south of Cherry Lane/Fairview, west of E. 4th Street Avenue, north of Broadway Avenue, and east of NW 1st Street.



Arts Projects



Meridian Art in Public Spaces (MAPS)

- City Council allocates 50 cents per Meridian resident ~~with a cap of \$50,000/yr.~~ to MAPS funding.
- Public Art Committee identifies & develops projects with these funds
- 2021: started a new public art Park Identity project at the new Five Mile Pathway Trailhub site. The site is the City's first 'gateway' to the Five Mile Pathway.
- 2022: continuing work on the project, reopened the call to artists nationally with a revised budget and RFQ + RFP

Park Identity Projects



Champion's Flame
Trademark Design
Champion Park

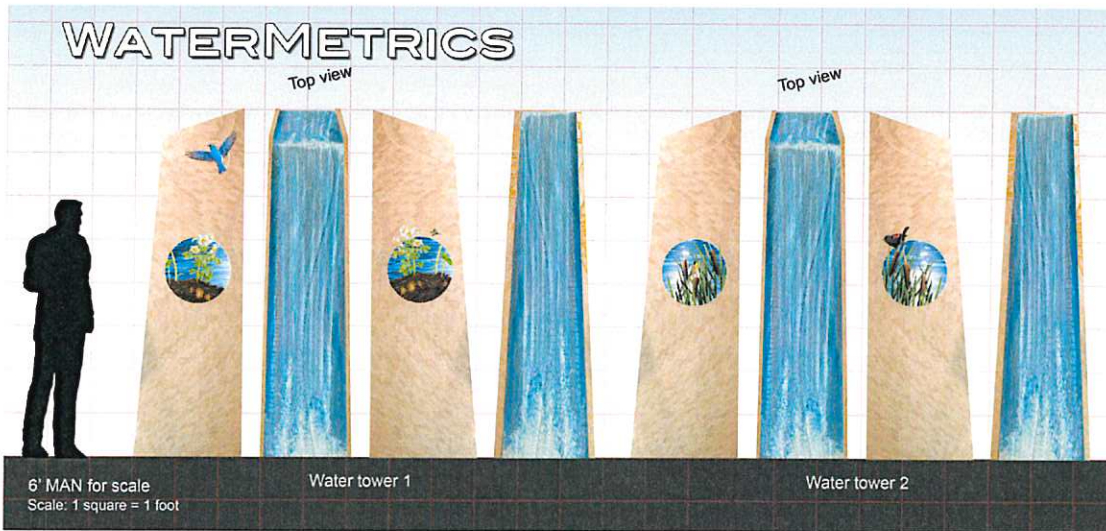


Illuminations
Ken McCall
Renaissance Park

Five Mile Creek Pathway Trailhub



- “Water Metrics” mosaic sculptures by Eileen Gay from Nevada.
- Artist selected through an RFQ + RFP Call to Artists with more public art applicants than Meridian has ever previously seen
- Project approved with enthusiastic support from Arts Commission
- Installation in summer 2023





Public Art Projects: Murals Meridian Mural Series

First Mural: Installed at Meridian Cycles with a public unveiling

Second mural: Installed at unBound Library

Third mural: Planned for Meridian Pool



Mural by artist Ben Konkol
Meridian Cycles

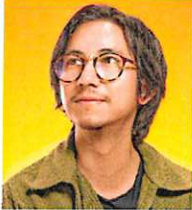


Mural by artist team Key Detail
at unBound library



Mural by artist team Sector 17
at Meridian Pool

Public Art Projects: Murals Tully Skatepark



Partnering a Professional Mural Artist with a Youth Apprentice

PROFESSIONAL MURAL ARTIST: Miguel Angel Almeida is a painter, illustrator, and digital artist of Mexican descent from Caldwell, ID. He has been skateboarding for 17 years, and skated at Tully skatepark often growing up. He has collaborated with numerous businesses in our community, and has been involved in various public art projects, including a recent project on the Linen District panels, and projects with the Garden City Placemaking Fund.

YOUTH MURAL ARTIST: Macy Ratzesberger is a student at Idaho Fine Arts Academy and was selected through a youth call to artists.

"In addition to keeping art in the public view, my other goal was to inspire kids. When they would come up to me during the installation and ask questions, or just sit and observe for a bit, it made me feel more connected to the effect that my mural would have on the community. I made sure to answer those questions and allowed them to watch, because I used to love doing the same thing when I was younger. It always made me feel inspired to do better art more often, so to be that inspiration for others was a surreal experience."

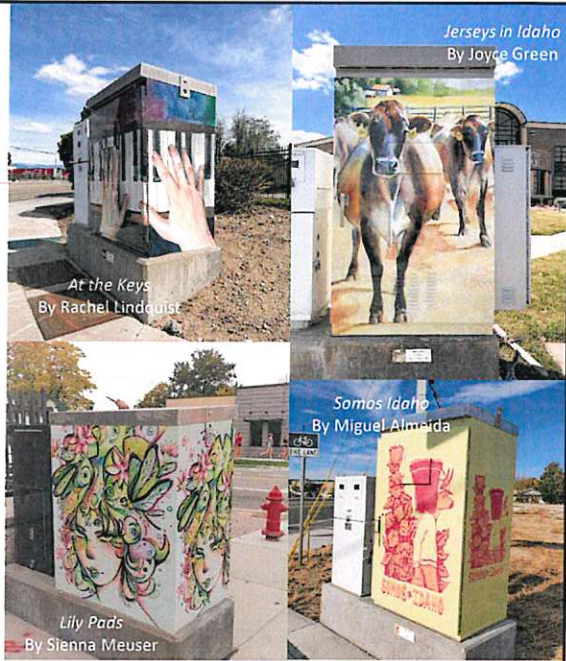


Public Art Projects: Murals Tully Skatepark



Public Art Projects: 2021 Traffic Box Series

- 7 wraps selected from artist’s repository and WASD, funded by MAPS
- 5 wraps selected from the WASD Student Art Show, installed in the Urban Renewal Area and funded by MDC



Public Art Projects: 2022 Traffic Box Series

1. Fire Station 1 540 E Franklin Rd: Tisha Johnson’s “She Took Time”
2. Fire Station 2 2401 N Ten Mile Rd: Jocelyn Irvin’s “Splendor Sunset”
3. Fire Station 3 3545 N Locust Grove Rd: Ashley Lian’s “Illumination”
4. Fire Station 4 2515 S Eagle Rd.: Stephanie Inman “High Desert”
5. Fire Station 5 6001 N Linder Rd: Rosa Cruz “Cocoon of Inclusion”
6. Meridian/Ustick: Replaced the wrap “Goals, Dream It, Believe It, Achieve It” with Mary Gardiner’s “Splash”
7. Linder/Cayuse Creek: Replaced the wrap “Bad Hair Day” with Ameerah Bader’s “Still Life, Still Here Week 24”
8. MDC sponsored - Meridian/Waltman: Elsa Lindh’s “Reflections” (pictured above)
9. MDC sponsored - Meridina/Broadway: Replaced “Zentangle Butterflies” with Kennedy Brown’s “My Identity Spread”
10. MDC sponsored - Main/Fairview: Replaced the wrap “Floating Above Air” with Nathan Lee’s “Robot City”



2022 Concerts on Broadway

- Smooth Avenue, High Street, Soul Patch



Tammy de Weerd's Awards in the Arts



- **RandyB Funk** received the award for *Student Excellence in the Arts*.
- **Cecyle Brock** was recognized with the *Support of the Arts* award.
- **Marianna Jimenez Edwards** received the award for *Arts in Education*
- **Dwight Williams** received the *Excellence in the Arts* award

2022 Meridian Art Week

- Art Drop
- Chalk Art Competition
- Live Music
- Classes
- Murals
- Plein Air Painters of ID
- Community Art Party
- Concerts on Broadway

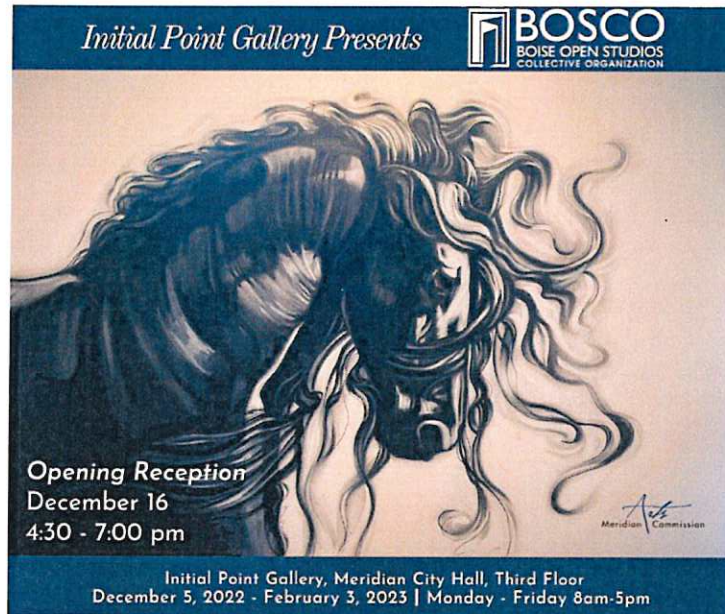


Initial Point Gallery Exhibits

- 2022: 11 total exhibits with 172 artists shown
 - WASD show of youth art
 - 2 artist organization group exhibits
 - College of Western Idaho art faculty exhibit
 - 7 group shows



- Current exhibit at Initial Point Gallery:



To follow Arts and Culture Activities on social media:

- Meridian Arts Commission on Facebook
- @meridianarts on Instagram
- Meridian History on Facebook
- @meridianhistory on Instagram

Arts and Culture Top 10 Highlights in 2022

- 1. Completed 3 mural projects: unBound library, and two at Tully Skatepark through the collaboration of a professional artist and a youth artist
- 2. Installed 10 new traffic boxes
- 3. Coordinated and hung 11 exhibits at Initial Point Gallery showing 172 artists with attendance of around 550 at the opening receptions
- 4. Coordinated the Tammy de Weerd's Awards in the Arts
- 5. Sponsorship of Treasure Valley Children's Theater performances
- 6. Produced 3 Concerts on Broadway with estimated 1,050 attendees
- 7. Successful Art Week 2022 + Collaboration on the Community Art Party
- 8. Finished Phase I of the North Main Street Survey
- 9. Completed the nomination process for the Meridian Speedway
- 10. Historic Preservation Month

Arts and Culture Top 12 Upcoming Projects and Goals for 2023

- 1. Work towards Public Art Master Plan and prioritize future public art projects (develop Discovery Park public art project)
- 2. Complete new mural by artist team Sector 17 at the Meridian Pool
- 3. Installation of "Water Metrics" mosaic sculptures by artist Eileen Gay at the Five Mile Creek Pathway Trailhub
- 4. New Special Traffic Box by youth artist Terry Binder at Ten Mile and Pine
- 5. Installation of new park identity and theming signage at Season's Park
- 6. Display 11 new exhibits at Initial Point Gallery, and try new ideas for increased programming and visibility
- 7. Manage new Call for Youth Performing Arts Projects <https://meridiancity.org/arts-culture-history/calls-to-artists/>
- 8. Produce 2023 Concerts on Broadway
- 9. Plan and implement Art Week 2023 + Collaborate on the Community Art Party
- 10. May 2023 Historic Preservation Month
- 11. Completion of the North Main Street Historic Survey
- 12. Finalize the Meridian Speedway nomination to the Historic Registry and celebrate with signage

Questions? Comments?

Thank you!

For questions or more information, please contact Meridian Arts and Culture Coordinator, Cassandra Schiffler at (208) 489-0399 or cschiffler@meridiancity.org

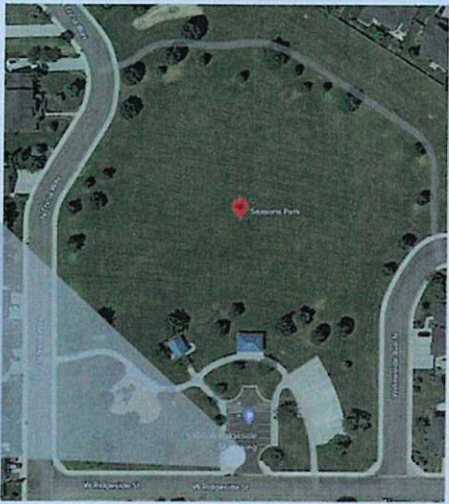
New Parks Identity and Theming Signage Project at Seasons Park

OVERVIEW OF PROJECT PLANS BY TRADEMARK DESIGN FOR SEASONS PARK LOCATION

CITY OF MERIDIAN | SEASONS PARK

DECEMBER, 2022

CURRENT FRONT ENTRANCE SIGN



ALYSSA STEPHENS
ALYSSA@TRADEMARKCREATIVE.COM

208 W 101ST
SUITE 1000
BOISE, IDAHO 83702

TRADEMARK
DESIGN | FABRICATION



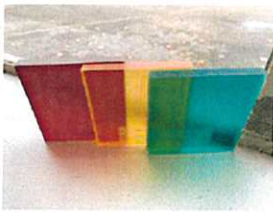
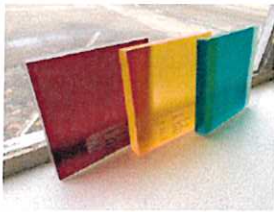
CITY OF MERIDIAN | SEASONS PARK

DECEMBER, 2022

MATERIAL

5" CHROMA 3-FORM PANELS

- YELLOW | Y14
- GREEN | G54
- RED | R21



ALYSSA STEPHENS
ALYSSA@TRADEMARKCREATIVE.COM

208 W 101ST
SUITE 1000
BOISE, IDAHO 83702

TRADEMARK
DESIGN | FABRICATION



OPTION 1

VIBRANT LEAF SHAPED PIECES LAYERED TO CREATE DIMENSIONAL AND ABSTRACTED VISUAL OF LEAVES/THE CHANGING COLORS OF THE SEASON.

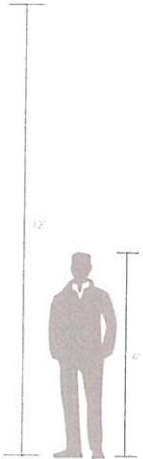
VIBRANT LAYERED 1/8" FORM PIECES. LIGHT SHINES THROUGH THE THREE COLORS TO CREATE GRADIENTS.

GROOVES CUT INTO PANELS TO CREATE LEAF-LIKE LOOK.

POWDER COATED ALUMINUM PANEL.

DIMENSIONAL LETTERING ON CONCRETE STANCHION. EXACT LETTERING TO BE DETERMINED.

LANDSCAPING



ALYSSA STEPHENS
ALYSSA@TRADEMARKCREATIVE.COM

208 W4750
11 WEST GONZA BLVD
BOISE, IDAHO 83726

TRADEMARK
DESIGN | FABRICATION



OPTION 2

VIBRANT LEAF SHAPED PIECES LAYERED TO CREATE DIMENSIONAL AND ABSTRACTED VISUAL OF LEAVES/THE CHANGING COLORS OF THE SEASON.

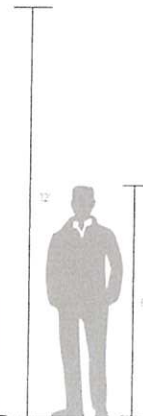
VIBRANT LAYERED 3/8" FORM PIECES. LIGHT SHINES THROUGH THE THREE COLORS TO CREATE GRADIENTS.

GROOVES CUT INTO PANELS TO CREATE LEAF-LIKE LOOK.

POWDER COATED ALUMINUM PANEL.

DIMENSIONAL LETTERING ON CONCRETE STANCHION. EXACT LETTERING TO BE DETERMINED.

LANDSCAPING



ALYSSA STEPHENS
ALYSSA@TRADEMARKCREATIVE.COM

208 W4750
11 WEST GONZA BLVD
BOISE, IDAHO 83726

TRADEMARK
DESIGN | FABRICATION



OPTION 1
 VIBRANT LEAF SHAPED PIECES, LAYERED TO
 CREATE DIMENSIONAL AND ABSTRACTED
 SOUNDS OF LEAVES OF THE SPINNING COLORS
 OF THE SEASONS.

VIBRANT LAYERED FORM PIECES
 LIGHT SHINES THROUGH THE THREE
 COLORS TO CREATE GRADIENTS.

GRINDERS CUT INTO DETAILS TO
 CREATE LEAF-LIKE LOOK.

POWDER COATED
 ALUMINUM FRAME

DIMENSIONAL LETTERING ON
 CONCRETE STATIONER
 EXACT LETTERING TO BE DETERMINED

LANDSCAPING



ALYSSA STEPHENS
 ALYSSA@TRADEMARKCREATIVE.COM

TRADEMARK
 DESIGN | FABRICATION

FRONT ENTRANCE SIGN MOCKUPS

OPTION 1



OPTION 2



OPTION 3



ALYSSA STEPHENS
 ALYSSA@TRADEMARKCREATIVE.COM

TRADEMARK
 DESIGN | FABRICATION

CITY OF MERIDIAN | SEASONS PARK

DECEMBER, 2022



ALYSSA STEPHENS
ALYSSA@TRADEMARKCREATIVE.COM

PAVILION INSTALLATION DESIGN

OPTION 1
DESIGN CONSISTENT WITH FRONT ENTRY DESIGN, THE LIGHT SHINES THROUGH THE PANELS TO CREATE VIBRANT COLORS OF LIGHT AND COLOR DESIGN EMULATES THE LOOK OF STAINED GLASS WHILE USING THE SHAPE OF THE LEAVES.

GROOVES CUT INTO PANELS TO CREATE LEAF-LIKE LOOK

VIBRANT LEAF-LIKE FORM PIECES LIGHT SHINES THROUGH THE THREE COLORS TO CREATE GRADIENTS

POWER COATED ALUMINUM FRAME

EXISTING PAVILION



TRADEMARK DESIGN | FABRICATION

CITY OF MERIDIAN | SEASONS PARK

DECEMBER, 2022



ALYSSA STEPHENS
ALYSSA@TRADEMARKCREATIVE.COM

PAVILION INSTALLATION DESIGN

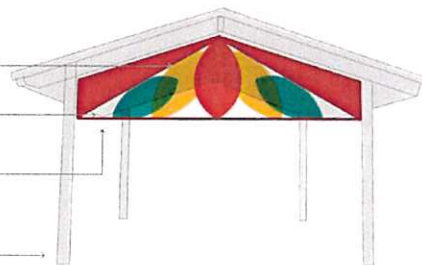
OPTION 2
DESIGN CONSISTENT WITH FRONT ENTRY DESIGN, THE LIGHT SHINES THROUGH THE PANELS TO CREATE VIBRANT COLORS OF LIGHT AND COLOR DESIGN EMULATES THE LOOK OF STAINED GLASS WHILE USING THE SHAPE OF THE LEAVES.

GROOVES CUT INTO PANELS TO CREATE LEAF-LIKE LOOK

VIBRANT LEAF-LIKE FORM PIECES LIGHT SHINES THROUGH THE THREE COLORS TO CREATE GRADIENTS

POWER COATED ALUMINUM FRAME

EXISTING PAVILION



TRADEMARK DESIGN | FABRICATION

PAVILION INSTALLATION DESIGN MOCKUPS

OPTION 1



OPTION 2



ALYSSA STEPHENS
ALYSSA@TRADEMARKCREATIVE.COM

TRADEMARK
DESIGN | FABRICAT | NY

Feedback & Questions?

Pathways Update

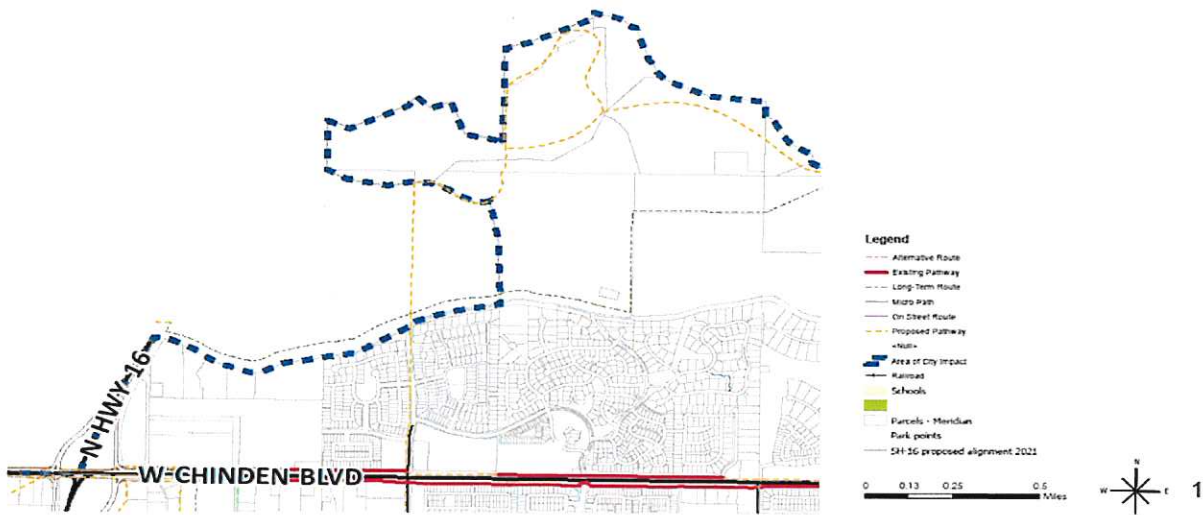
Mike Barton, Parks Superintendent

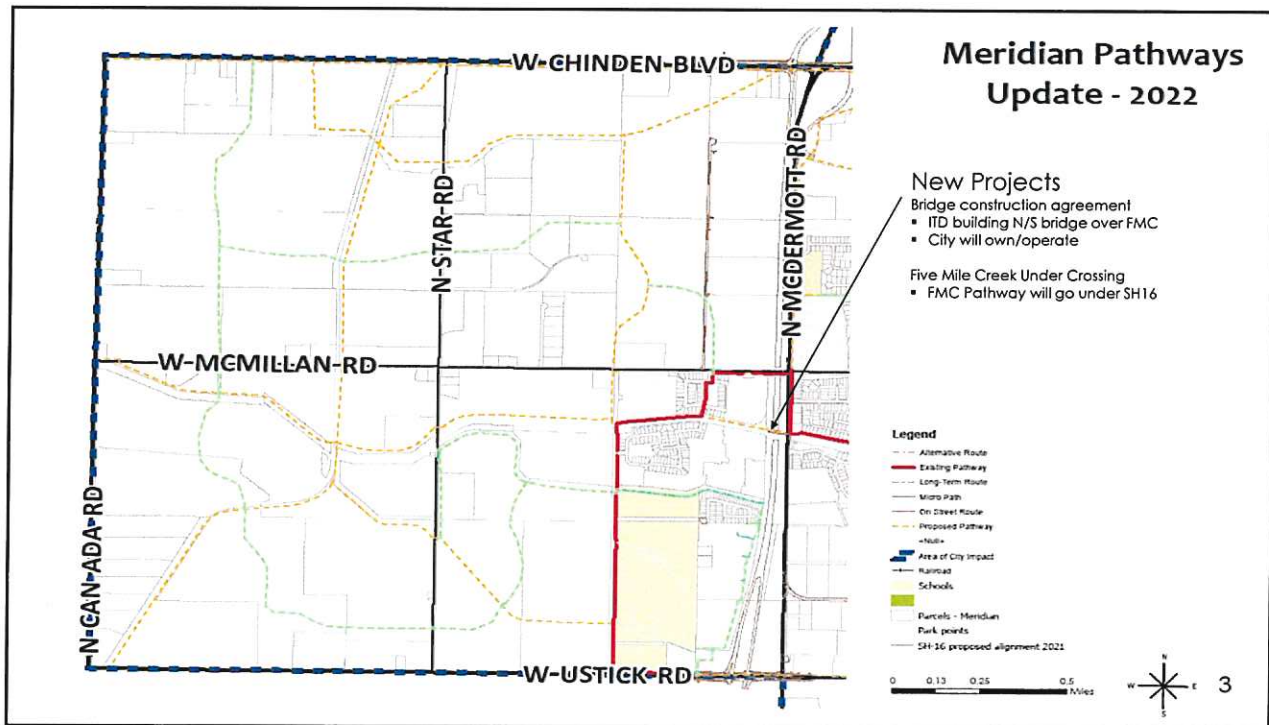
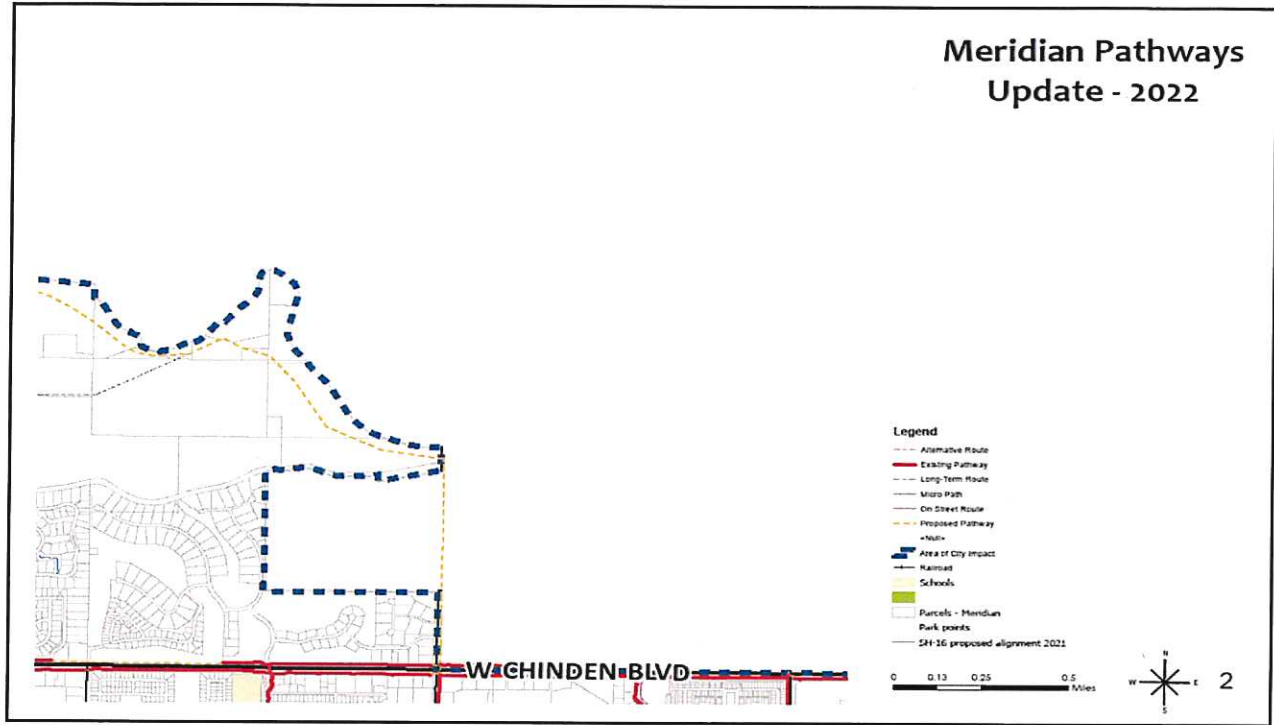
Agenda -

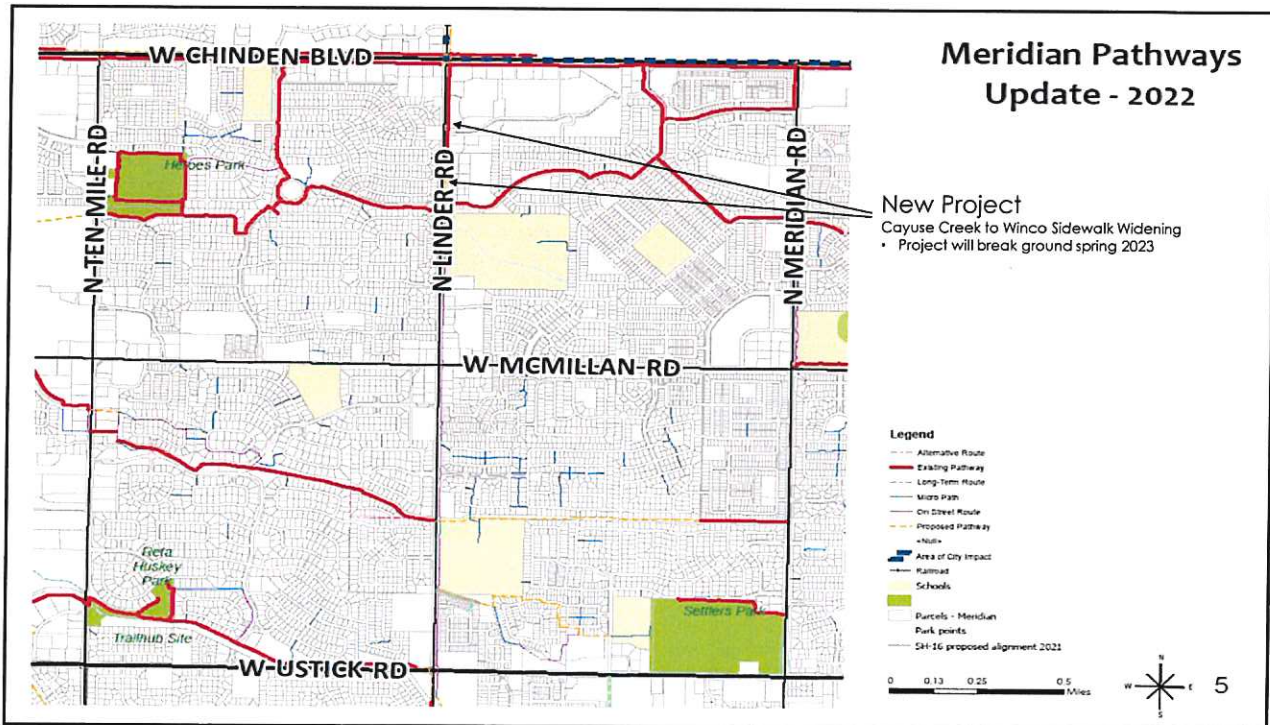
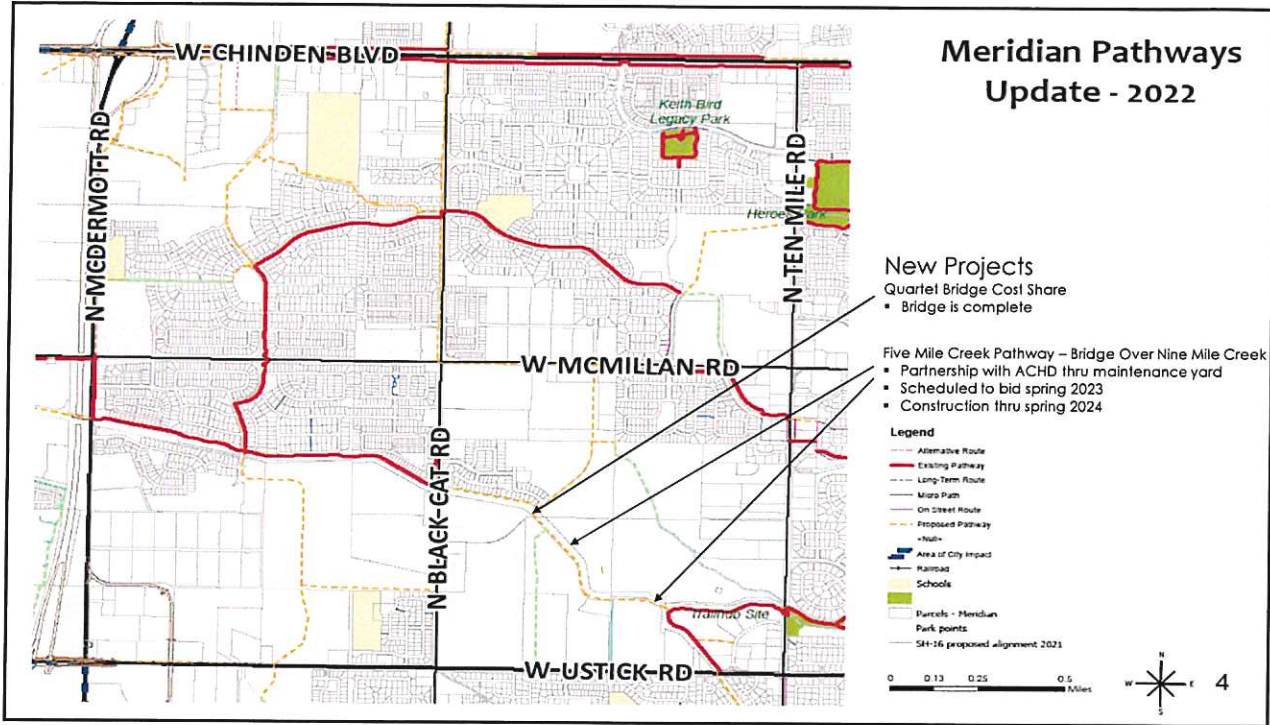
- Pathways Map Enlargements
- Highlight Current and Recently Completed Projects
- Discuss New Pathway Map for Adoption

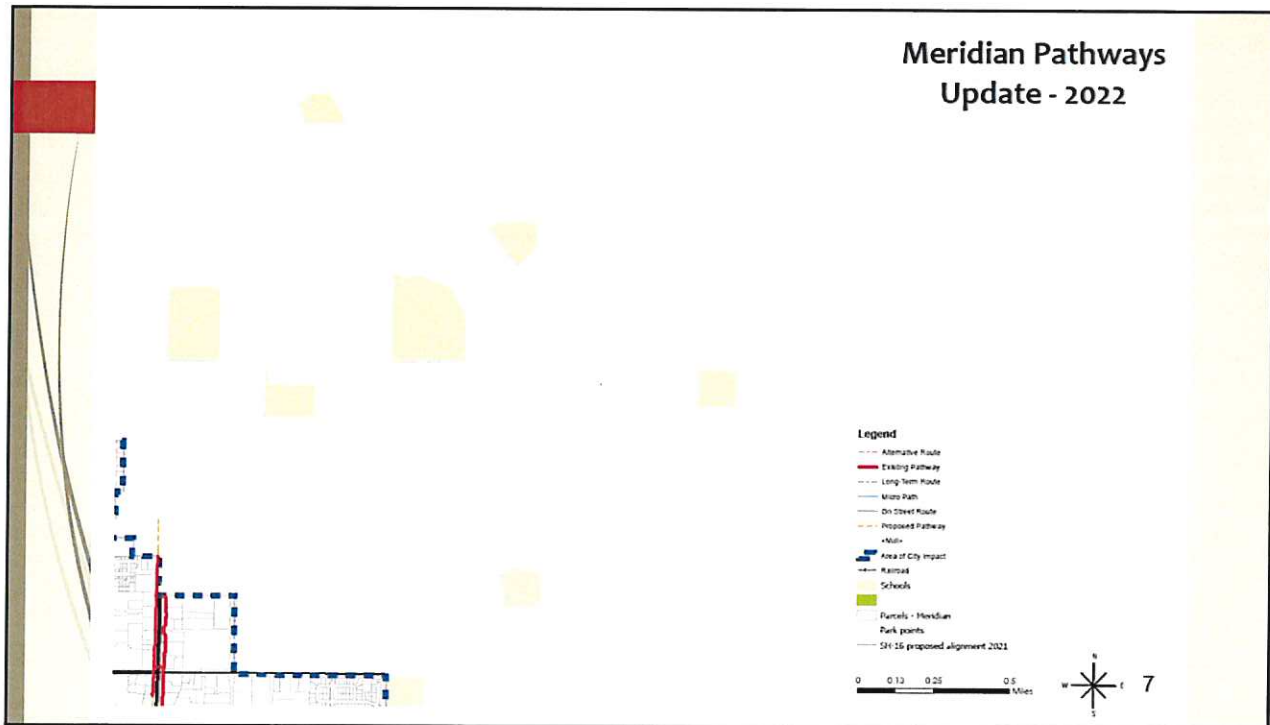
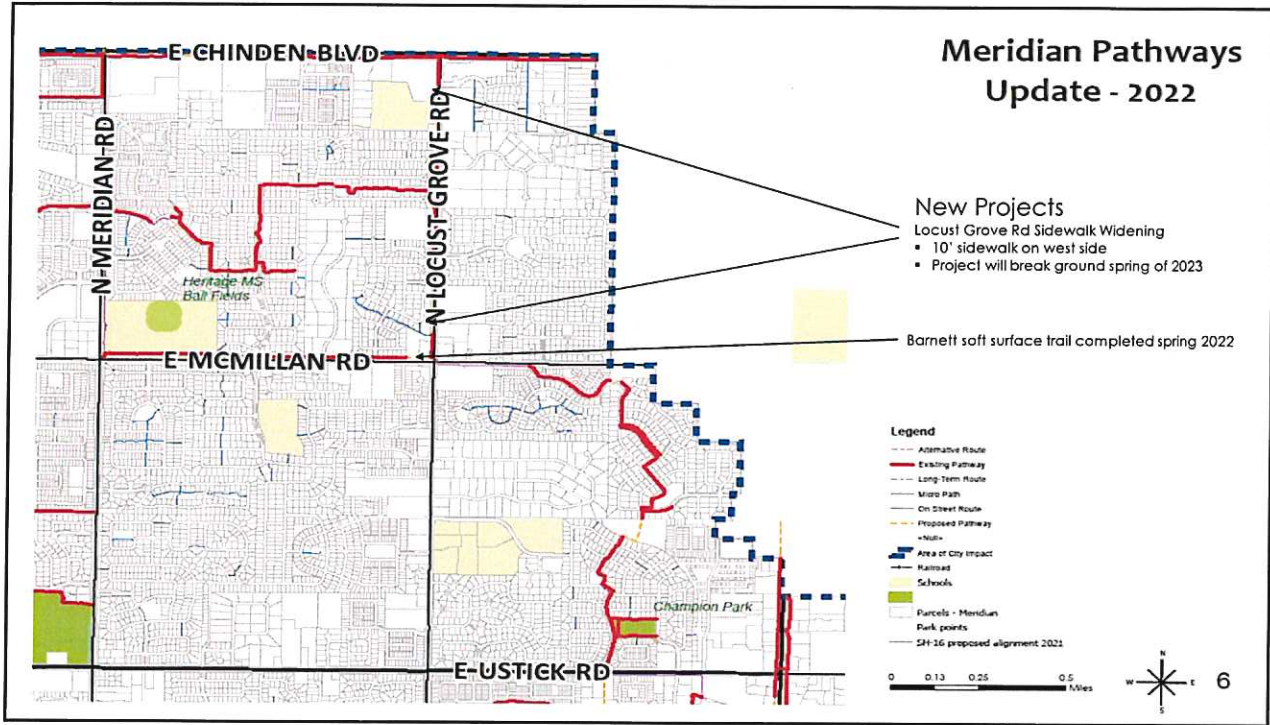


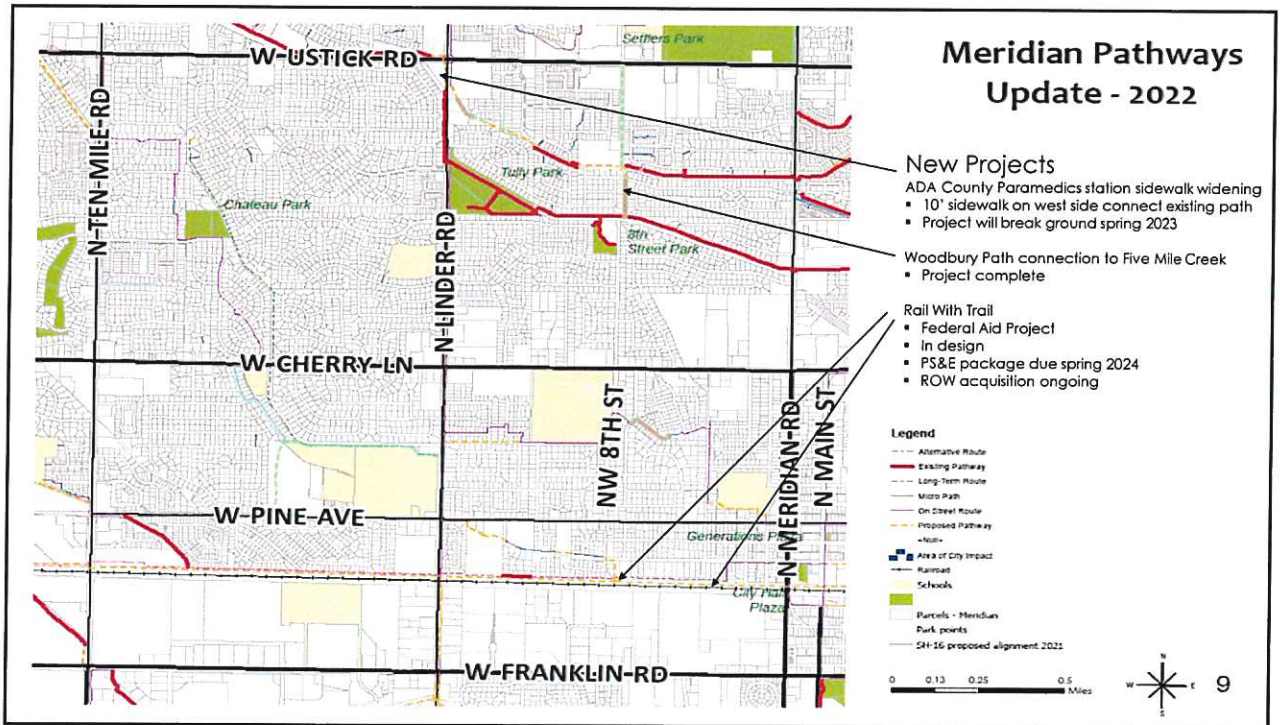
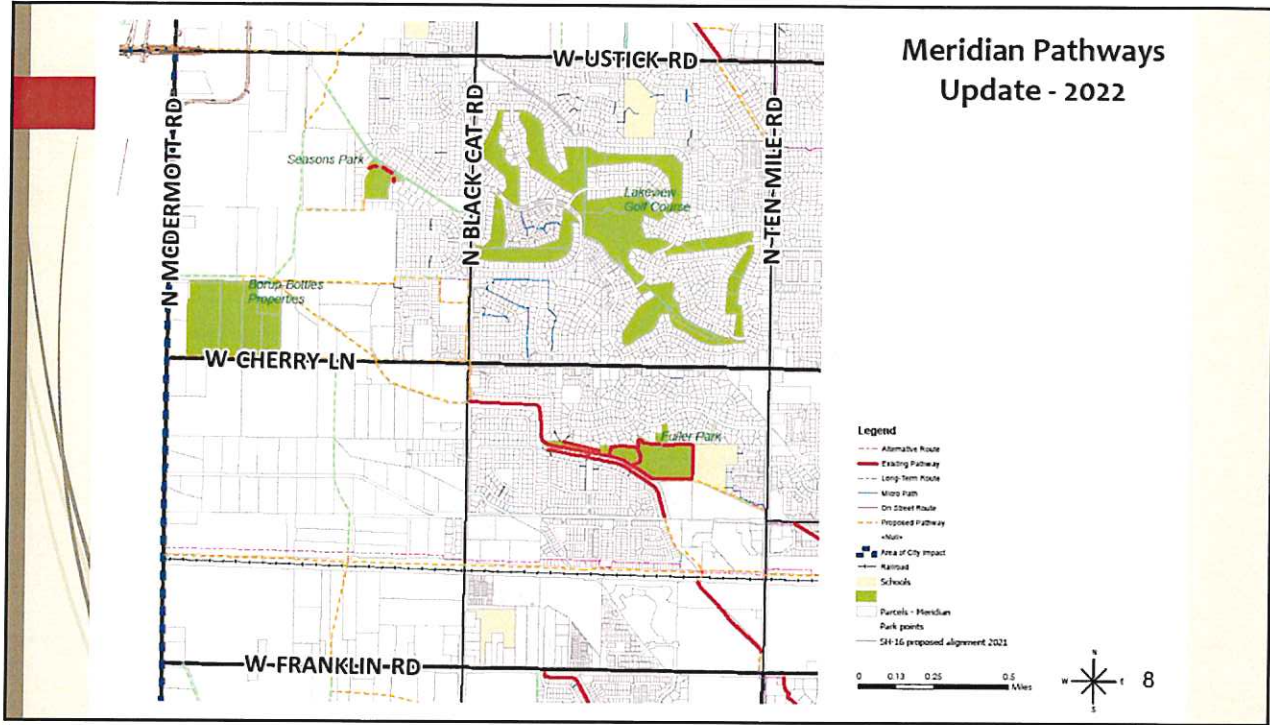
Meridian Pathways Update - 2022

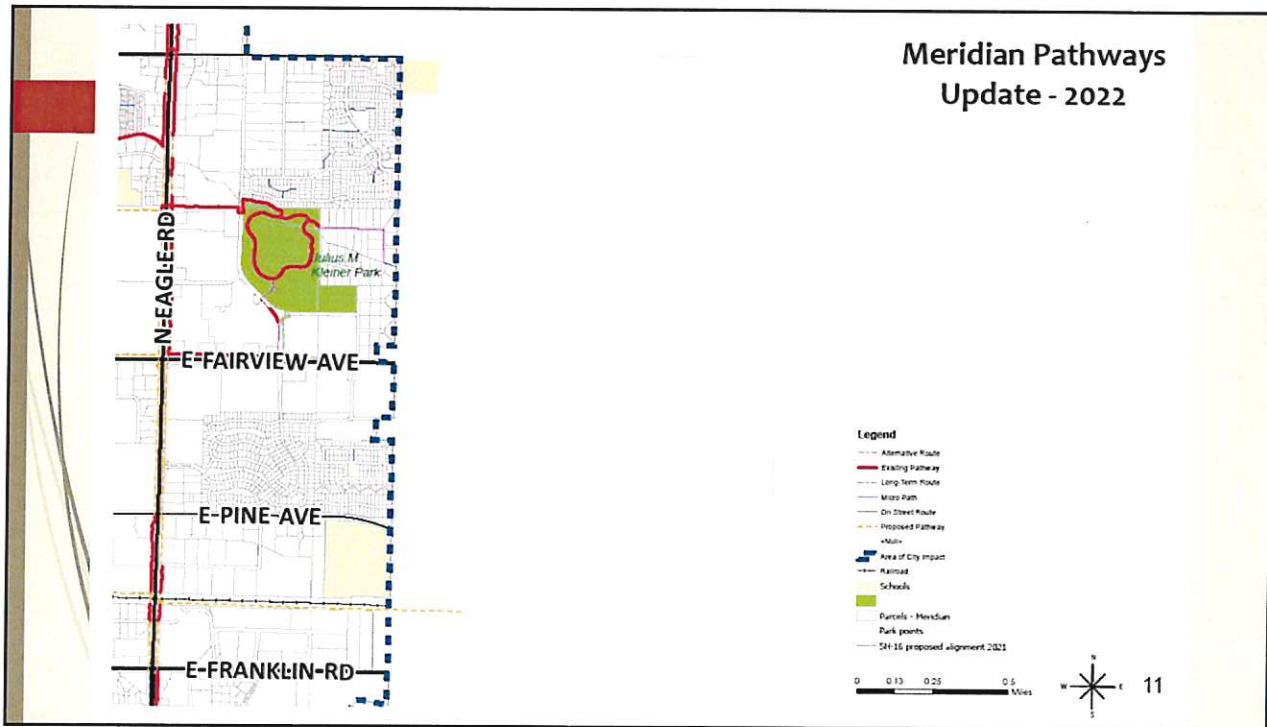
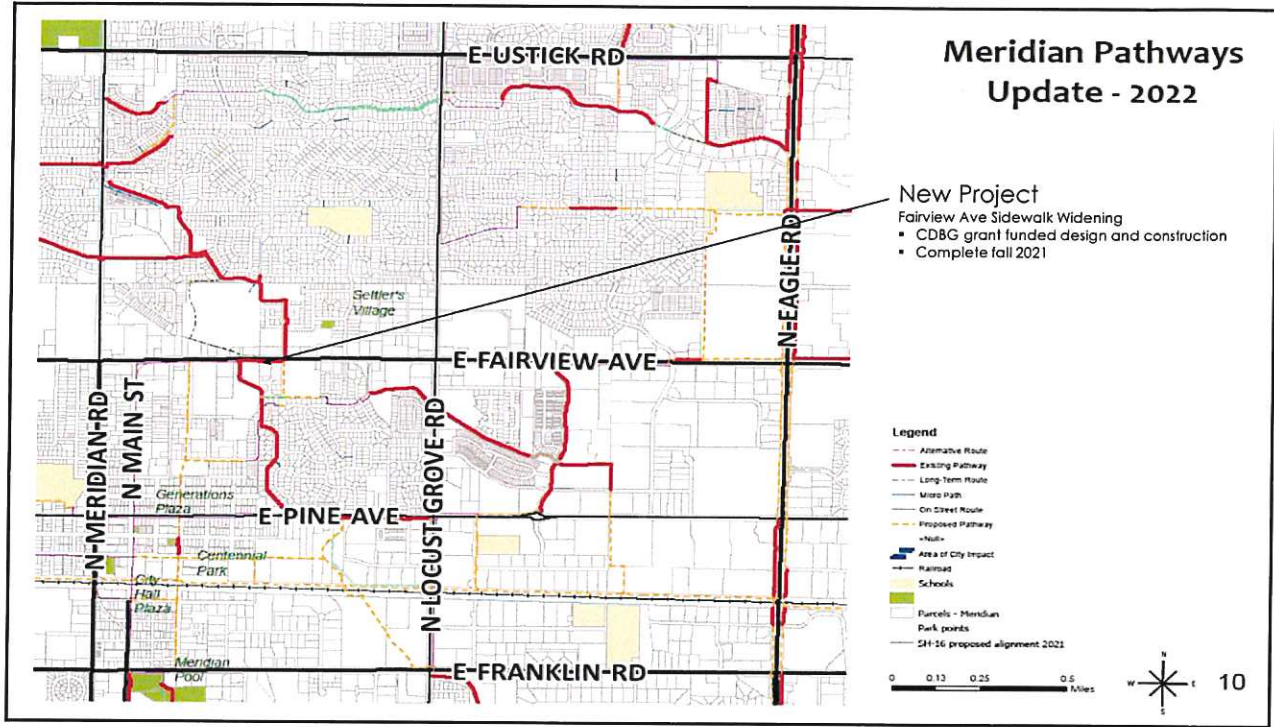


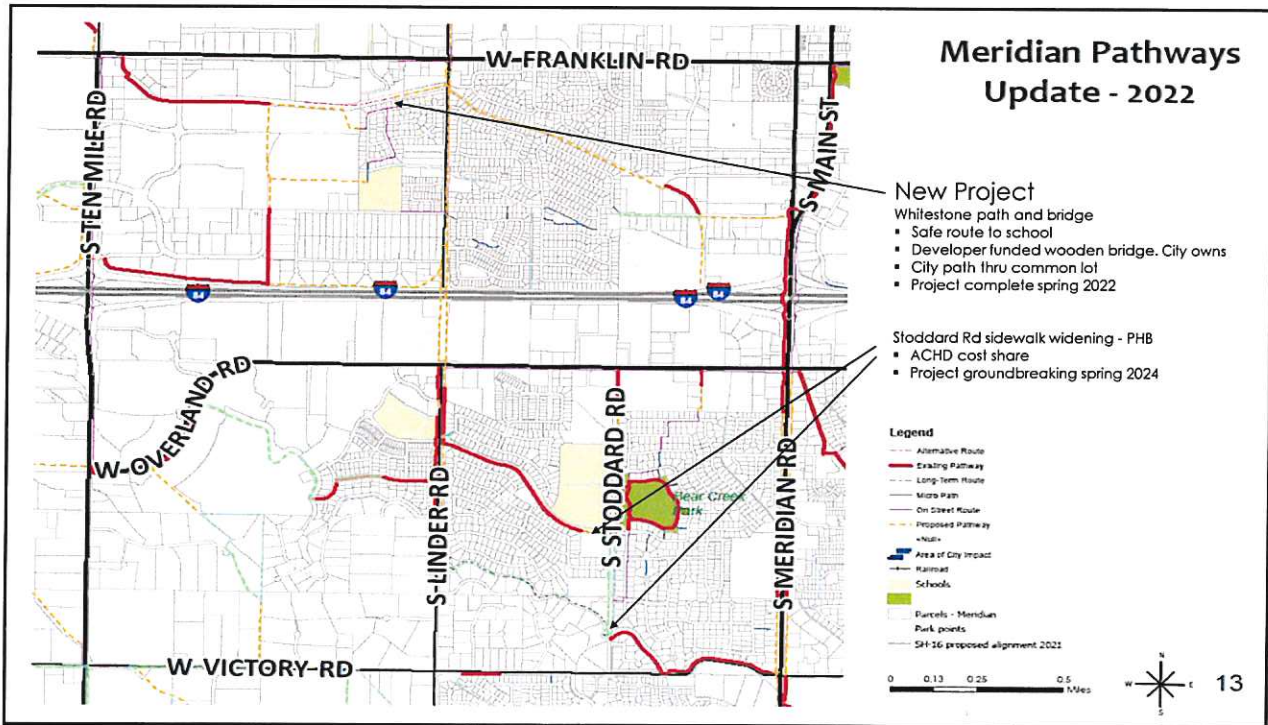
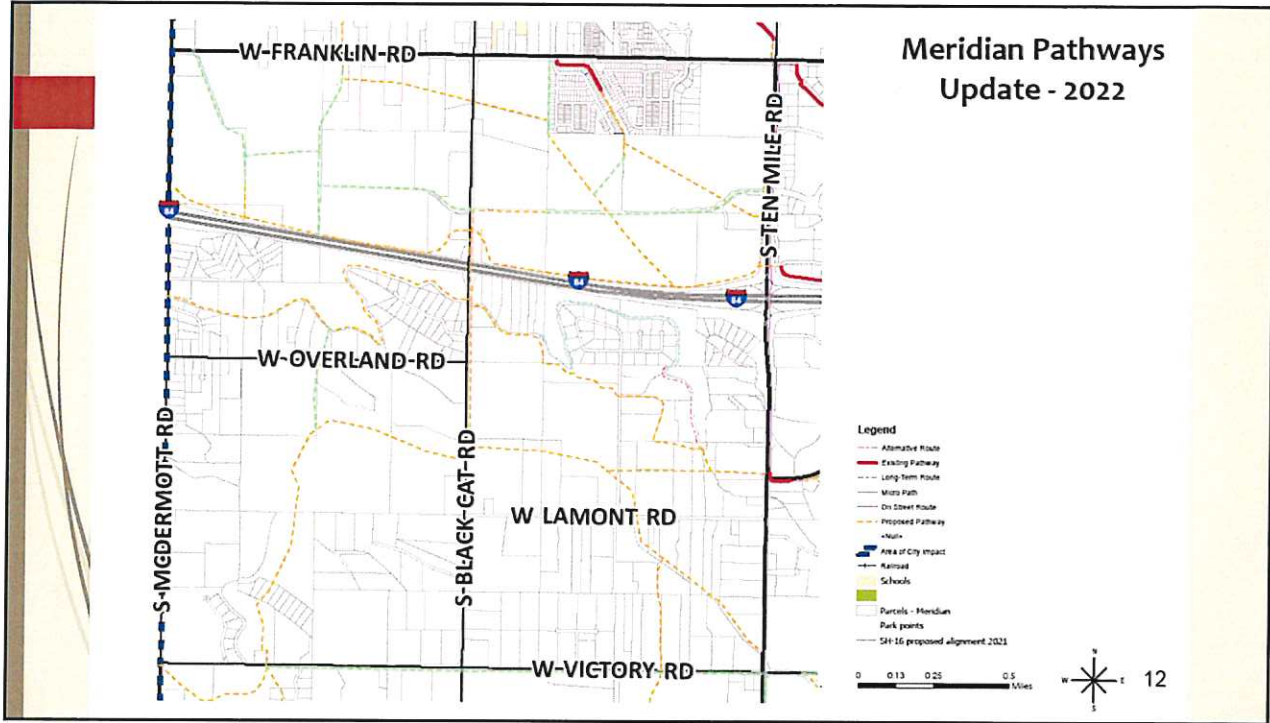


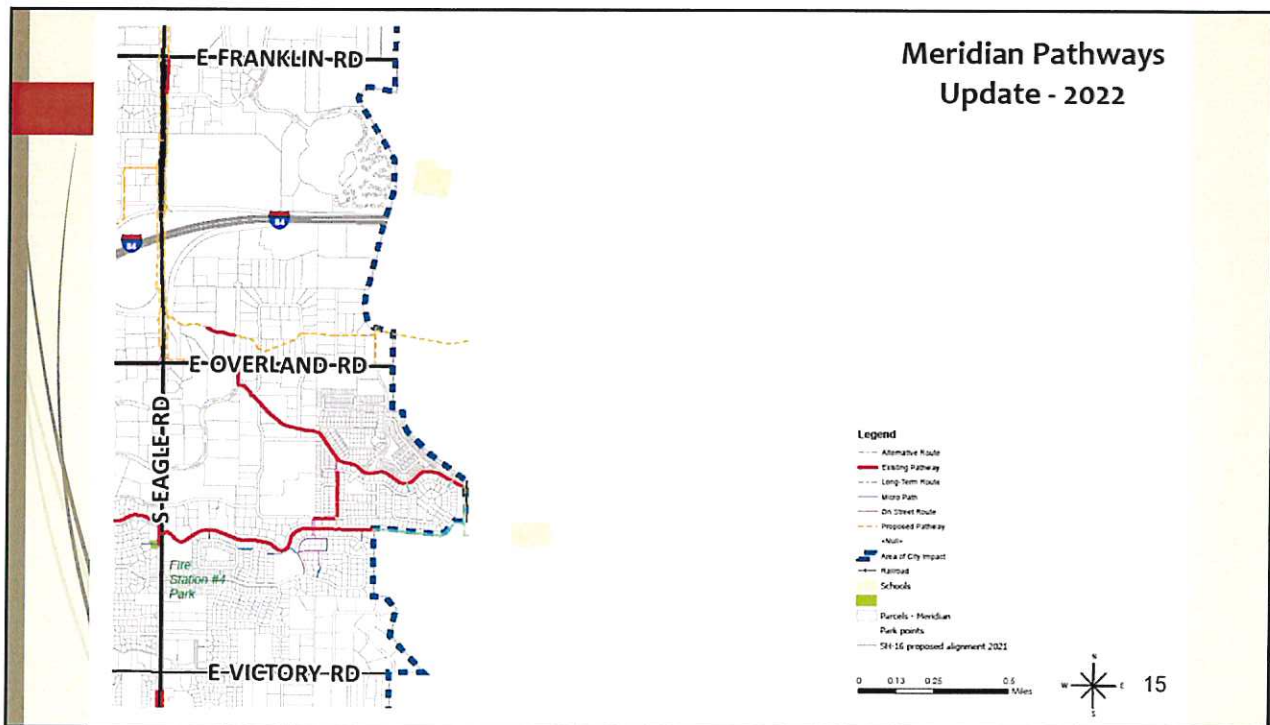
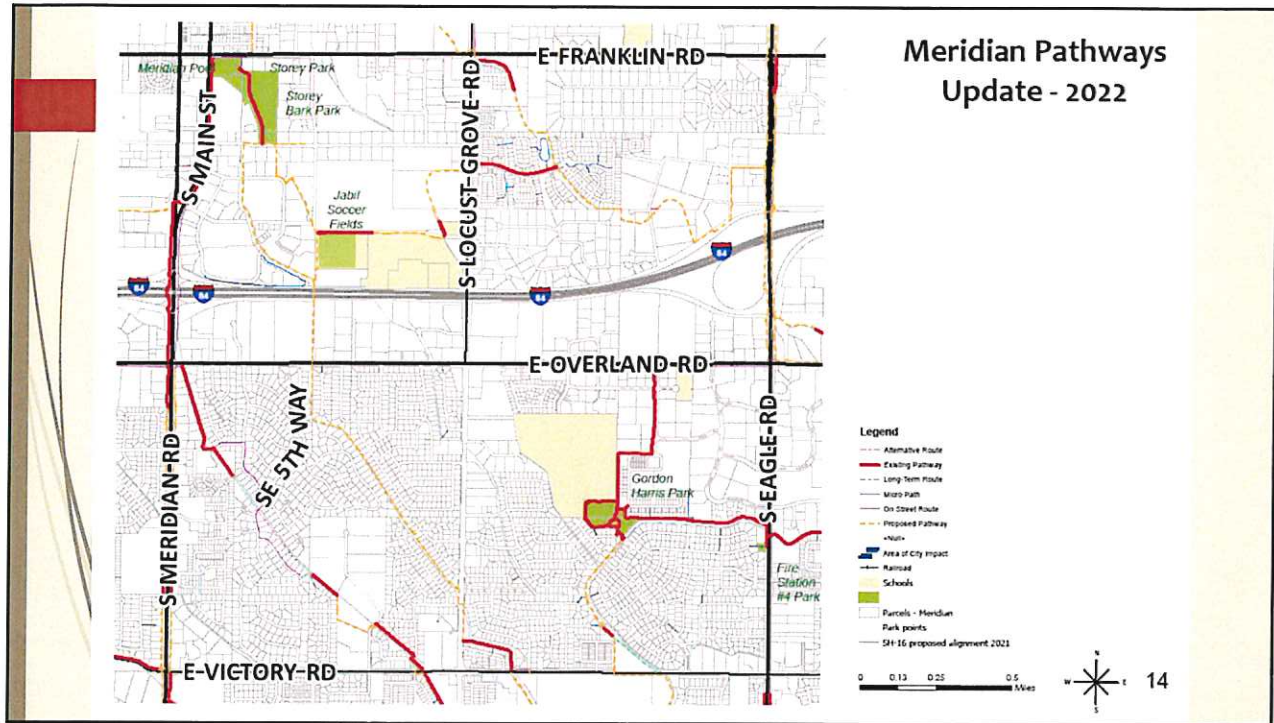


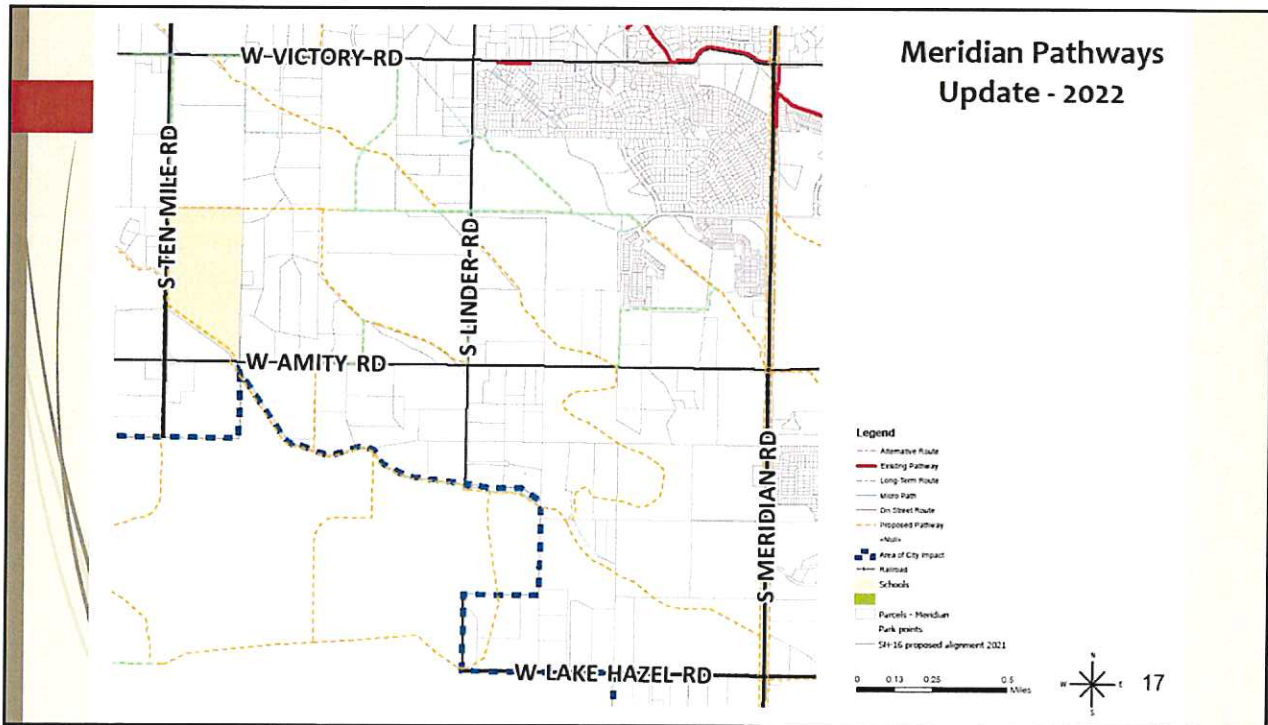
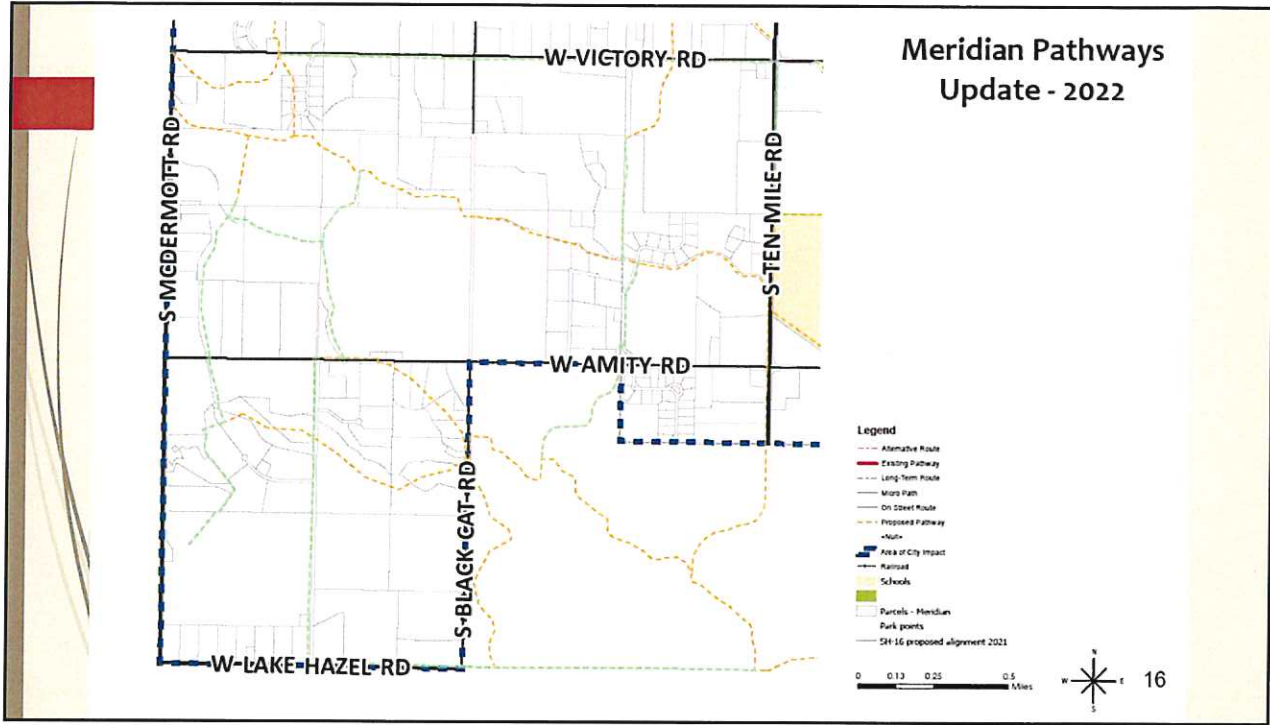


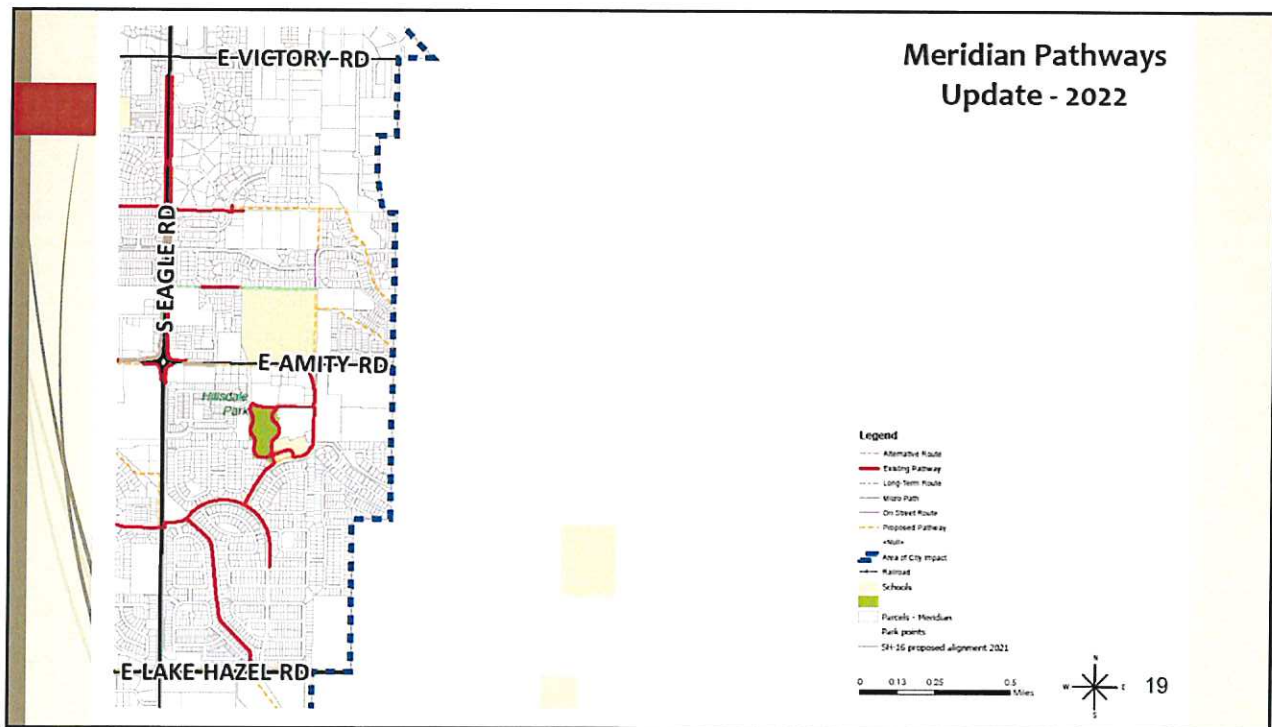
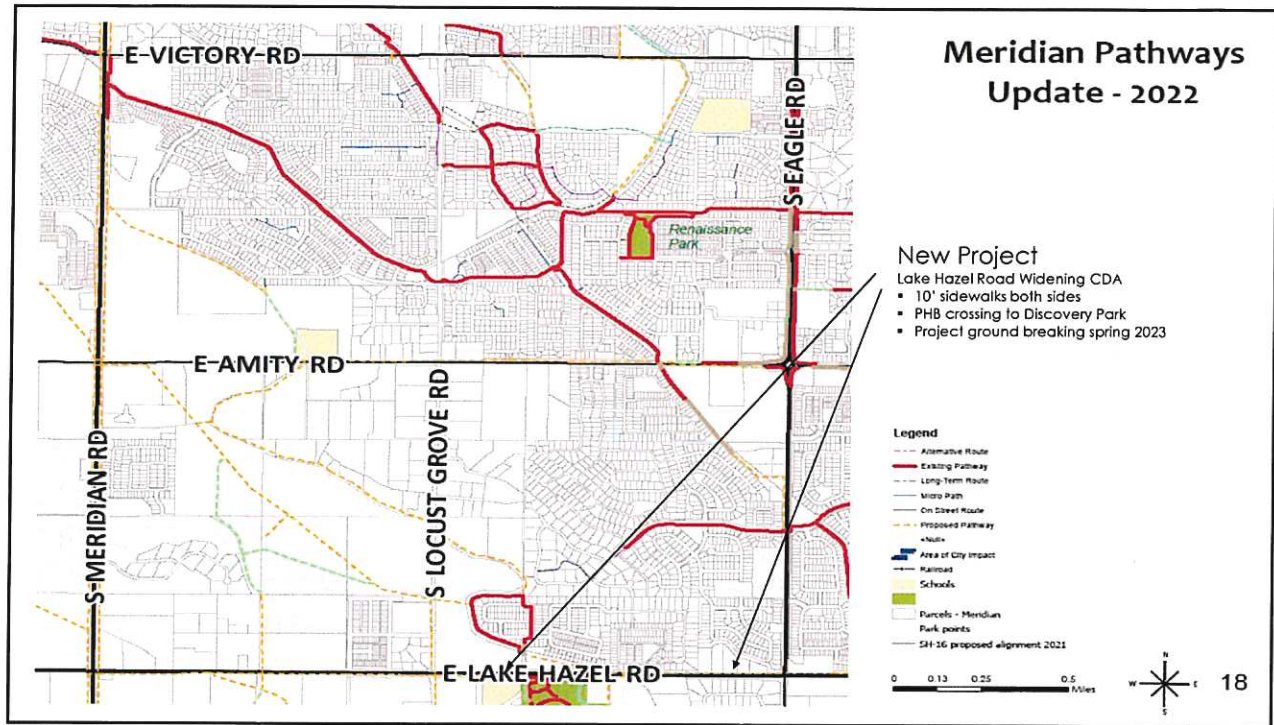


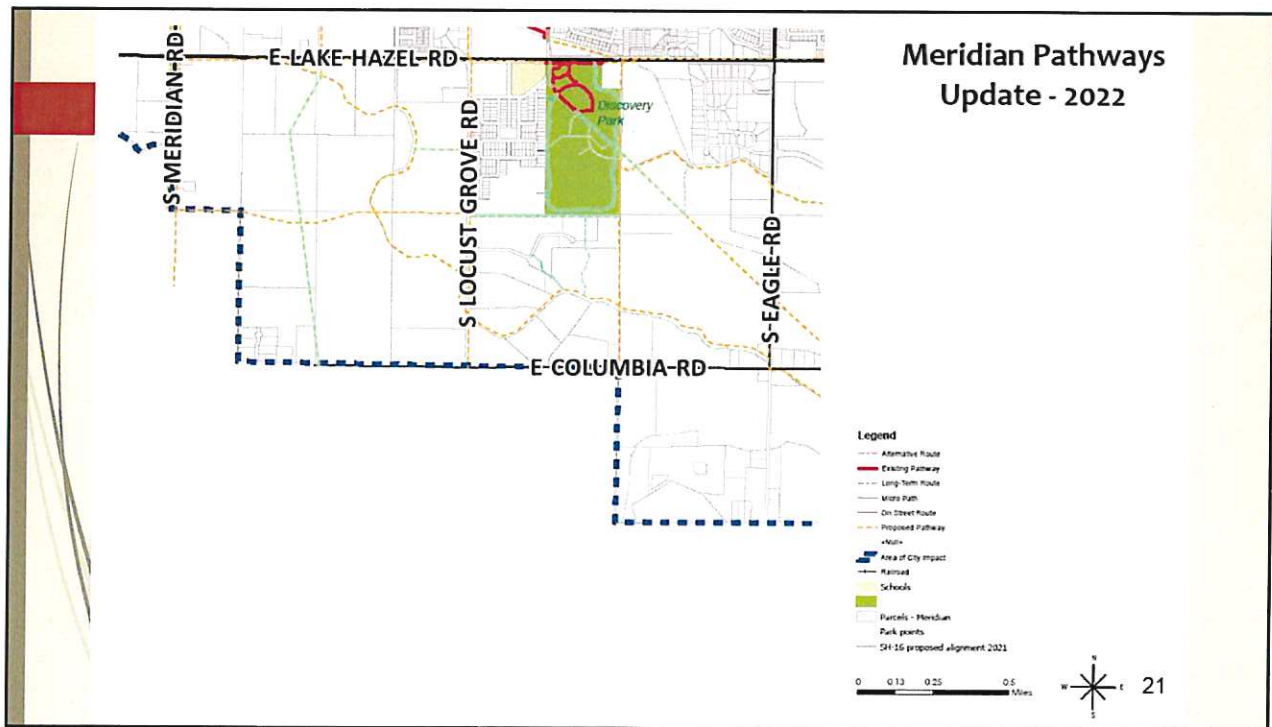
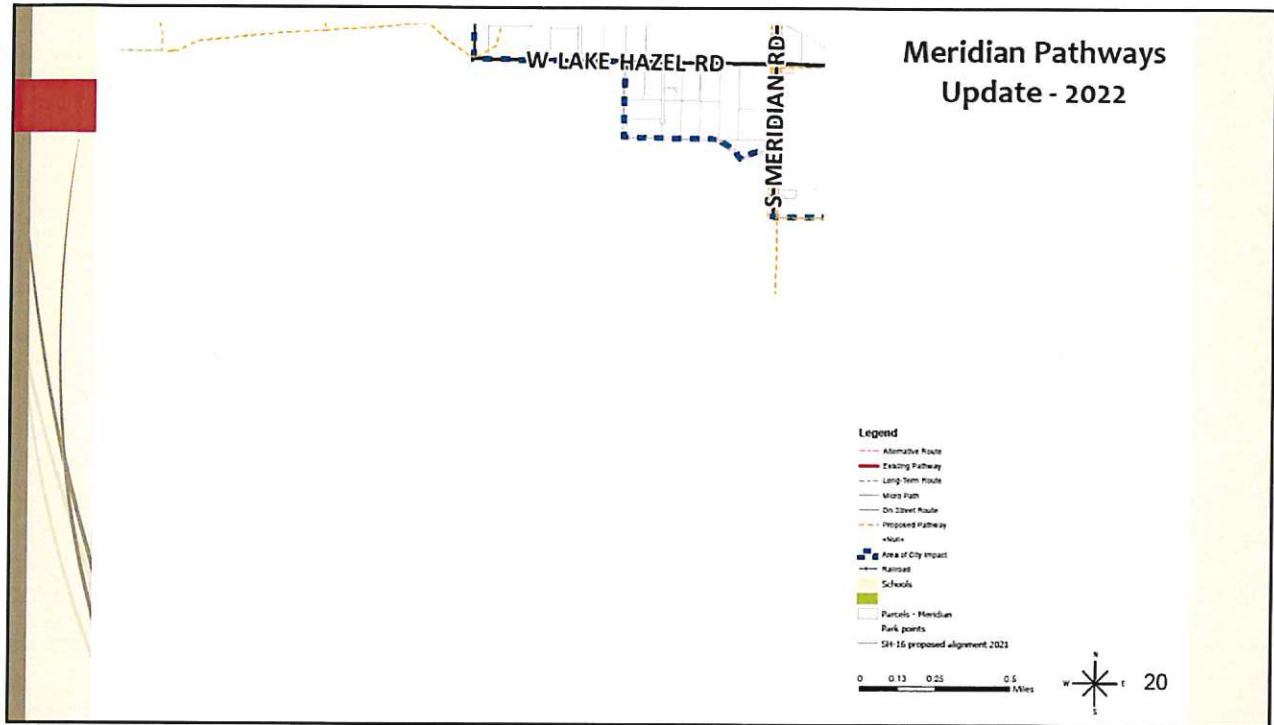


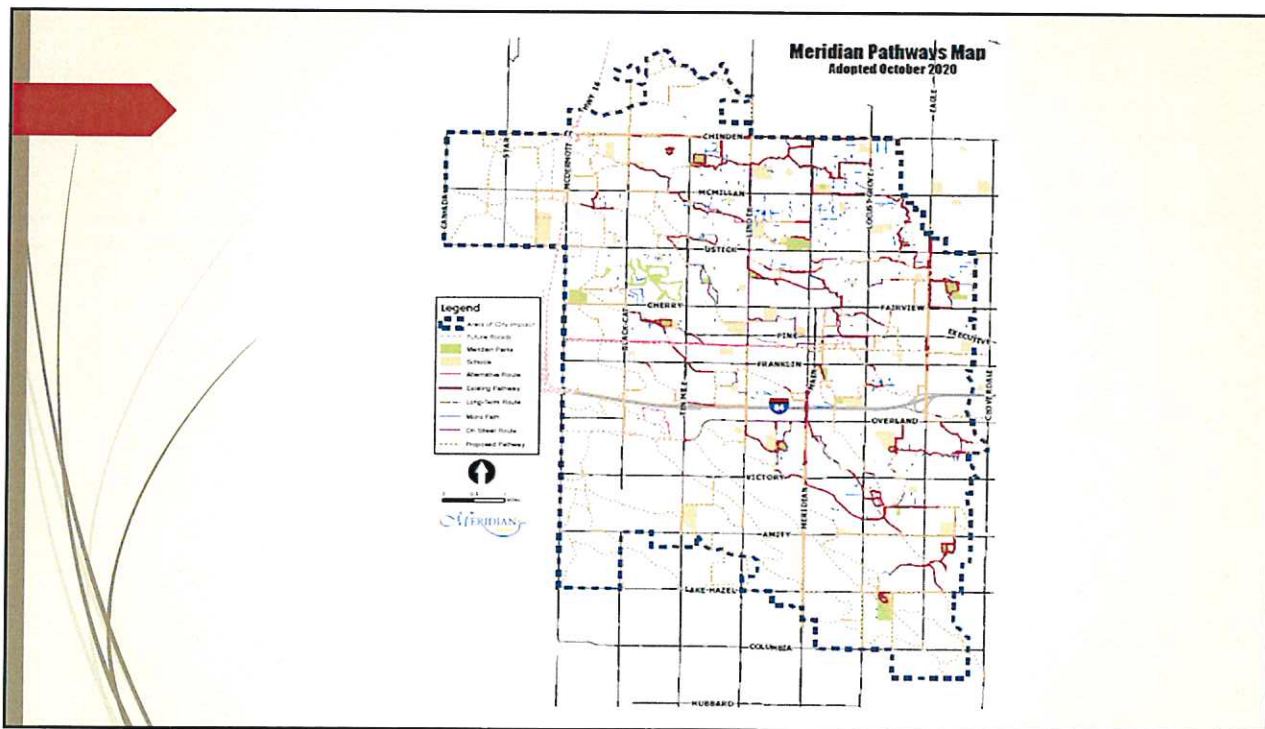
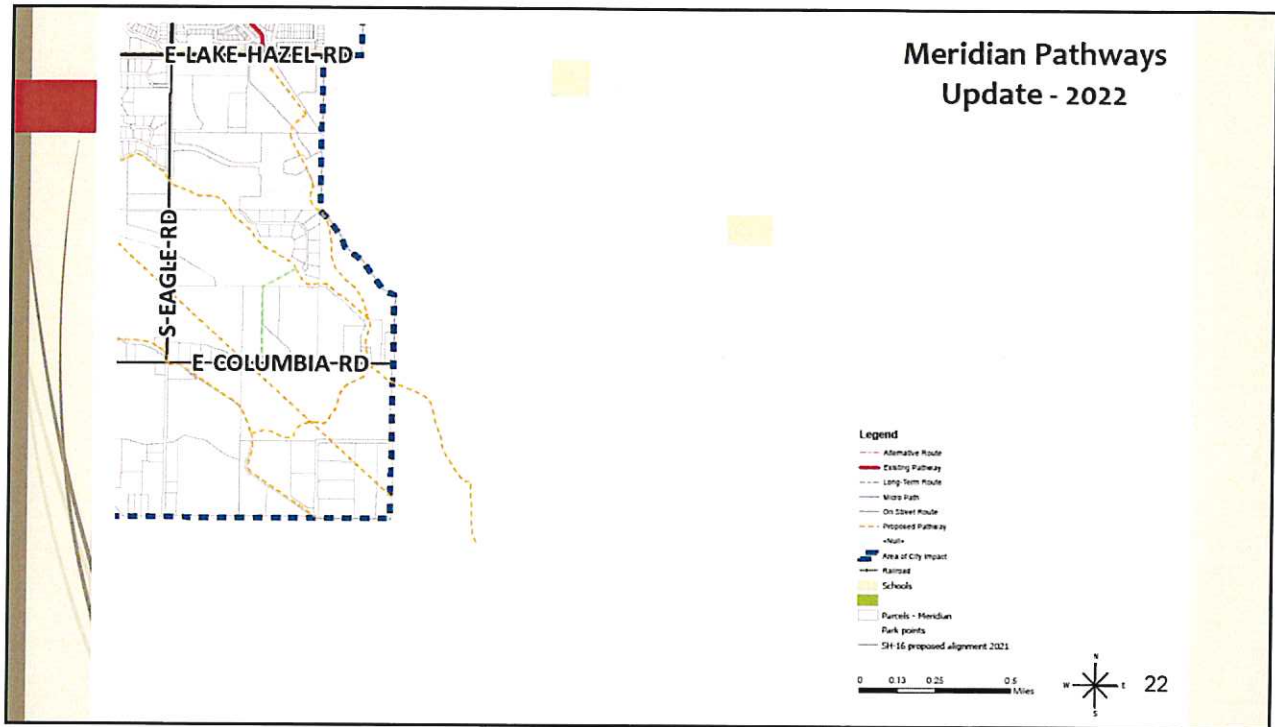


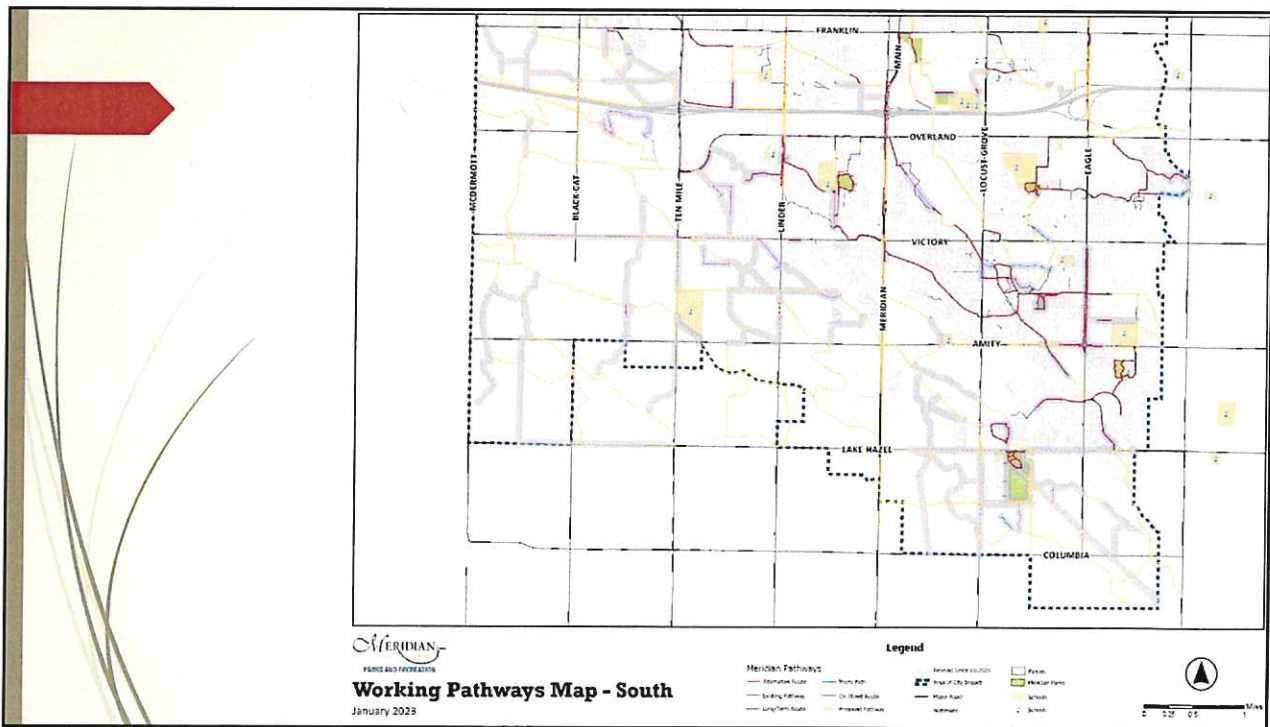
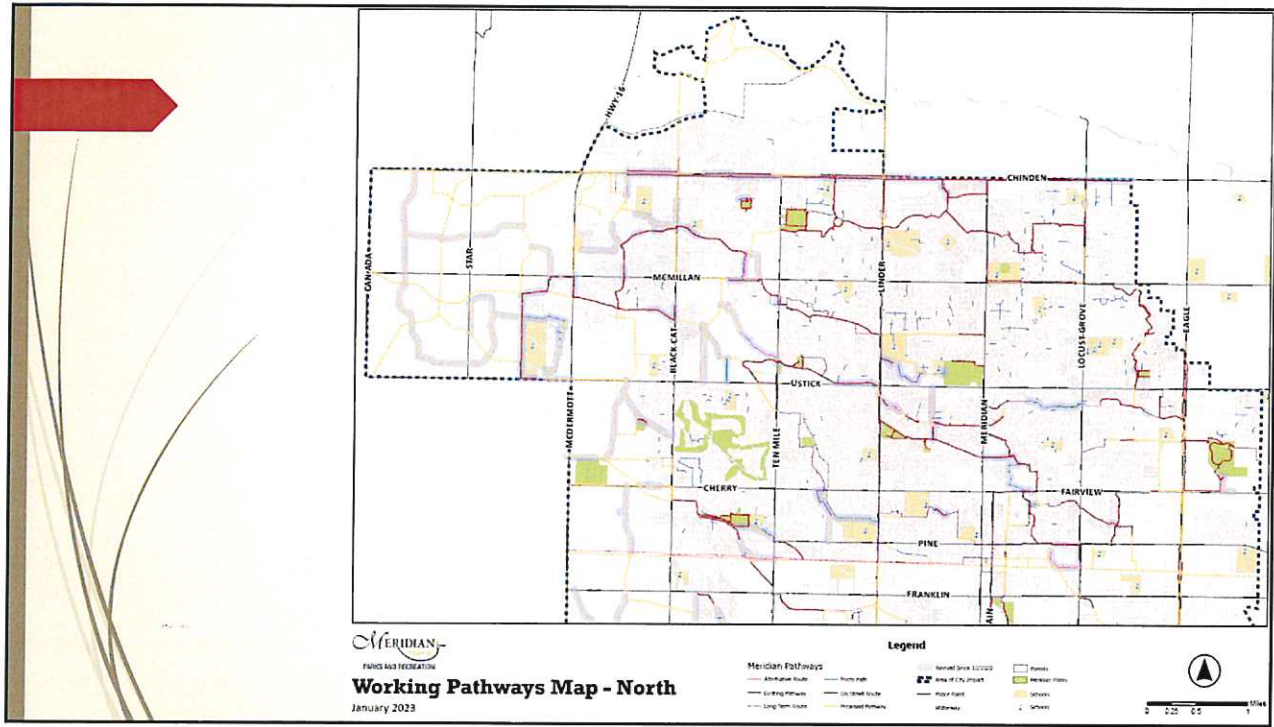












Pathways Map was last adopted in October 2020

Working Layer has 518 changes since last adoption

- New pathways added to map (primarily North/South connections)
- Completed pathways
- Proposed pathways on collectors
- North side, south side of canal bank changes

Adopt Working Layer in spring of 2023

- Parks and Recreation Commission - each commissioner send comments to me (no talking to or sharing thoughts with each other) and I'll publish the commissioners' comments I receive with the March meeting packet
- City Council - Final Adoption



Discovery Park - Bike Park Discussion

Mike Barton, MPR Parks Superintendent



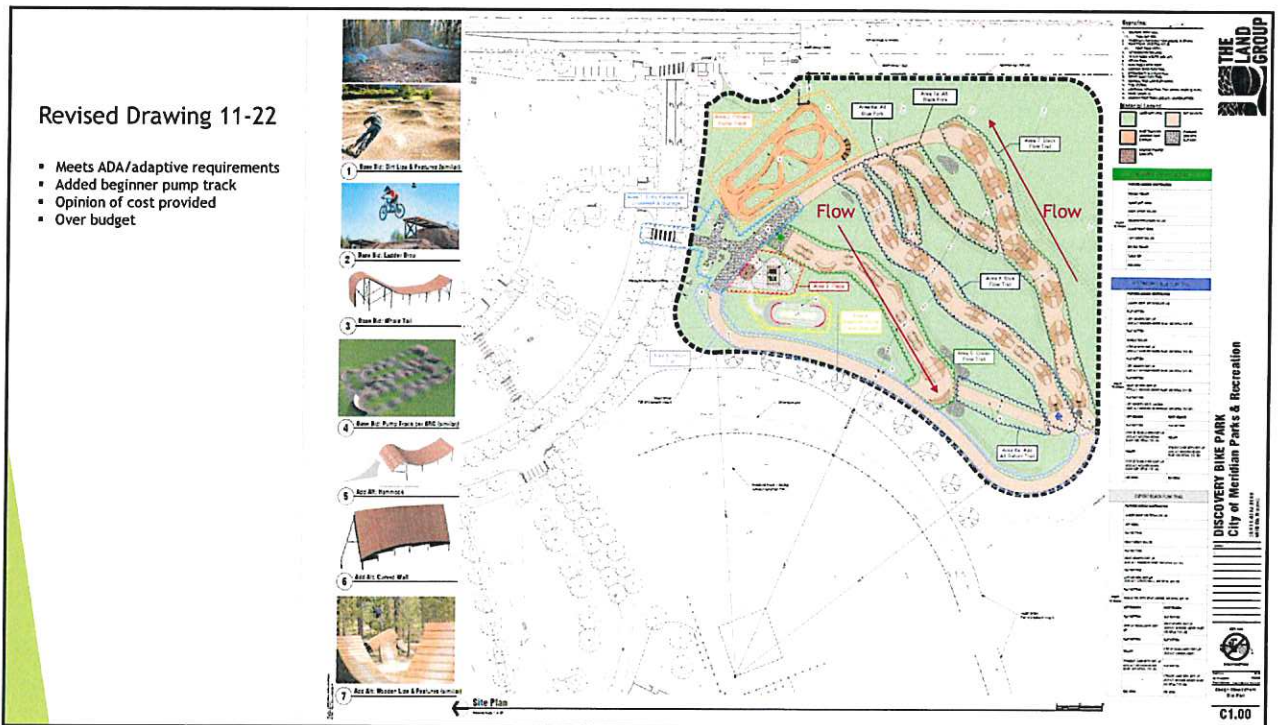
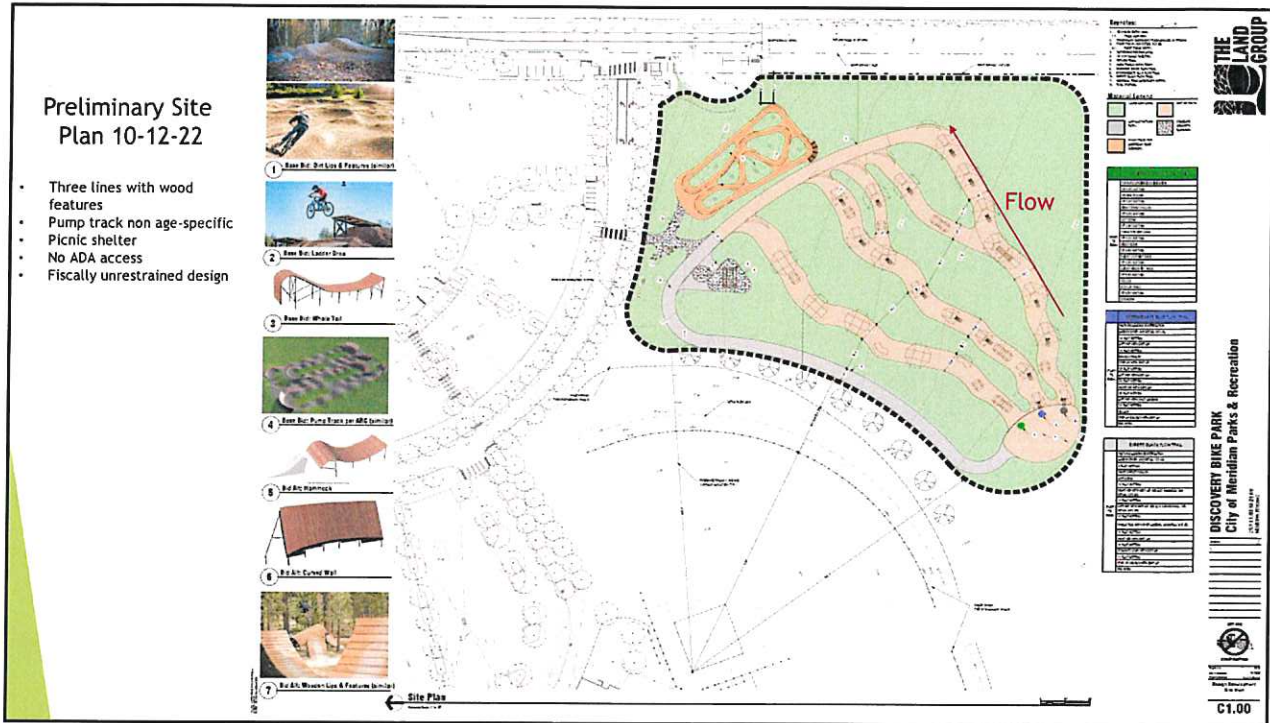
Overall Site Plan 10-12-22




DISCOVERY BIKE PARK
City of Meridian Parks & Recreation

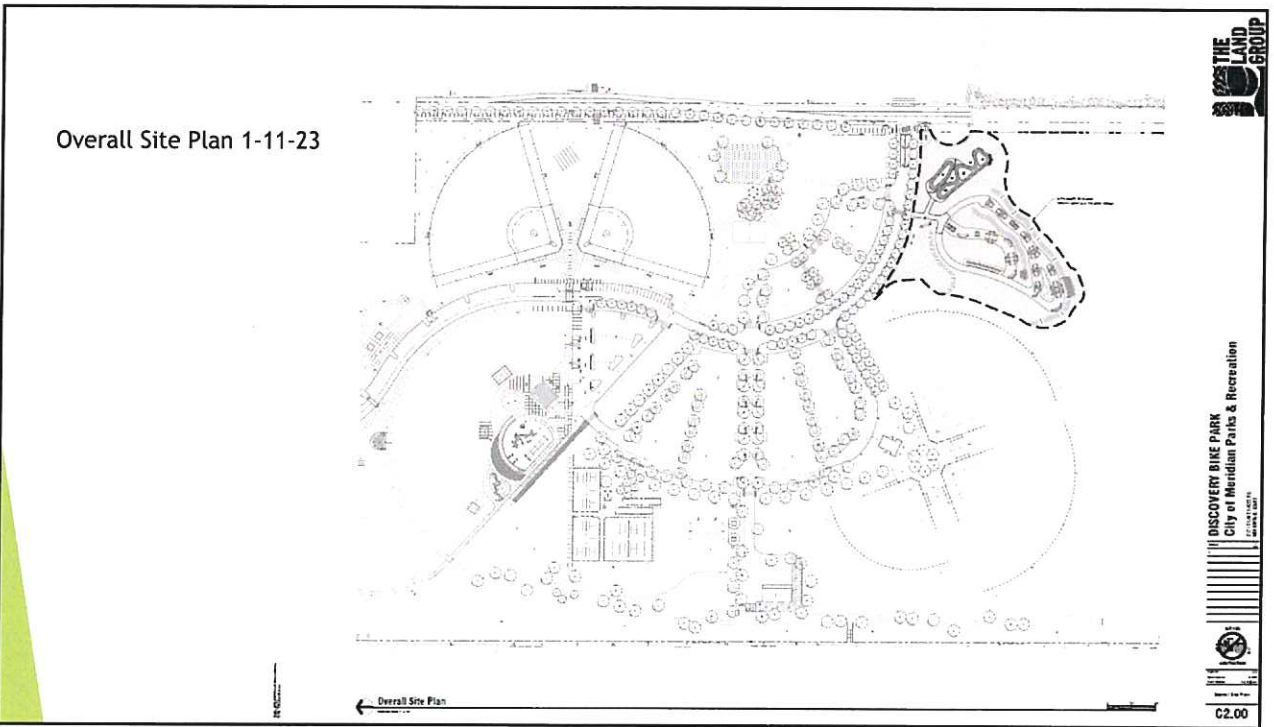



CO.00




STATEMENT OF PROBABLE COST				
Discovery Bike Park Final Concept Design				
TLG Project No.: 122129				
				
482 E. Shore Drive, Suite 200 Eagle, Idaho 83616 (208) 339-4041				
Current Date: 22-Nov-22				
Quantity/Cost To Be Determined (TBD)				
DESCRIPTION OF WORK / MATERIALS	UNITS	QUANTITY	PRICE PER UNIT	TOTAL
MOBILIZATION				
Mobilization (TBD)	LS	1	50,000.00	50,000.00
Subtotal				50,000.00
DEMOLITION				
Stump Measures	LS	1	10,000.00	10,000.00
Construction entrance	EA	1	4,500.00	4,500.00
Curb & Gutter Removal	LF	35	10.00	350.00
Subtotal				14,850.00
SITE PREPARATION				
Earthwork				
Surveying and staking (TBD)	LS			50.00
Cut and Slope for Fill Material	CY	1,425	6.00	8,550.00
Import Fill	CY	35,365	21.00	742,665.00
Import Aggregate Base Rock	CY	123	28.50	3,505.50
Final Grading (TBD)	SF	140,000	0.20	28,000.00
Compaction (TBD)	CY	35,365	5.50	194,407.50
Subtotal				1,154,078.00
Site Concrete, Flatwork and Asphalt Paving				
4-in concrete Flatwork	SF	7,300	10.00	73,000.00
8" Vertical Curb & Gutter	LF	10	40.00	400.00
Pedestrian Ramp	EA	2	3,550.00	7,100.00
Entry Sprague (TBD)	LS	1	15,000.00	15,000.00
Subtotal				95,500.00
Site Drainage				
3-in PVC	LF	72	240.00	17,280.00
Subtotal				17,280.00
CONTRIBUTIONS				
3-Stage E-Postment markings	LS	1	4,000.00	4,000.00
Site model station	EA	1	2,500.00	2,500.00
Plan Table	EA	2	3,500.00	7,000.00
Subtotal				13,500.00
PAVEMENT				
Main Pump Track	LS		350,000.00	350,000.00
Blue Trail Ladder Drop w/ Install (4 FT)	EA	1	2,801.13	2,801.13
Black Trail Ladder Drop w/ Install (6 FT)	EA	1	3,792.17	3,792.17
Green Trail Build	LS		40,512.11	40,512.11
Blue Trail Build	LS		120,645.61	120,645.61
Black Trail Build	LS		132,719.12	132,719.12
Subtotal				650,879.94

DESCRIPTION OF WORK / MATERIALS	UNITS	QUANTITY	PRICE PER UNIT	TOTAL
LANDSCAPE				
Import topsoil - 12-in depth, place and grade	CY	6,204	16.00	99,264.00
Soil amendments & finish grading	SF	167,510	0.75	125,632.50
Trees: Planting Pk. Soil, Amendments & Irrigation	EA		700.00	20.00
Shrub: Planting Pk. Soil, Amendments & Irrigation	EA		50.00	20.00
Non-mow Seed Mix (Hydroseed)	SF	104,754	0.25	26,188.50
Non-mow Mesozo Seed Mix (Hydroseed)	SF	52,877	1.00	52,877.00
T-4 Seed	SF	2,037	0.25	509.25
River cobble @ drainage facilities (4-in clean)	CY	28	40.00	1,120.00
Rock mulch @ planters (3-in depth)	CY	22	60.00	1,320.00
Subtotal				239,551.25
IRRIGATION				
Irrigation components - Spray (Gee)	SF	1,037	2.25	2,333.25
Irrigation components - Drip (Parker Bed)	SF	3,516	2.50	8,790.00
Irrigation components - Rains (Pop-Up/Sow)	SF	157,151	2.50	392,877.50
Irrigation system controls & modifications	LS	1	6,500.00	6,500.00
Subtotal				408,500.75
CONSTRUCTION SUBTOTAL				
				\$2,660,779.69
Soft Costs:				
Contingency (15%)				399,116.95
				\$3,059,896.64
ADD. ALTERNATE				
SITE FURNISHINGS				
Shade structure	LS	1	30,000.00	30,000.00
Subtotal				30,000.00
BLUE FLOW TRAIL FEATURES				
5 FT Wooded Kicker Ramp w/ Install	EA	7	5,570.05	38,990.35
Alternate Blue Flow - (1) 6 FT Ramp w/ Install	EA	1	6,340.79	6,340.79
Alternate Blue Flow Build	LS		12,064.56	12,064.56
Subtotal				57,395.70
BLACK TRAIL FEATURES				
6 FT Wooded Kicker (for white trail) w/ Install	EA	1	6,340.79	6,340.79
White Trail w/ Install	EA	1	27,374.29	27,374.29
7 FT Wooded Kicker w/ Install	EA	2	7,243.77	14,487.54
Hammock Ramp (TBD)	EA	1		50.00
Curved Wall Row w/ Install	EA	1	18,630.17	18,630.17
Conner Leg w/ Install	EA	1	7,243.77	7,243.77
Alternate Black Flow - (1) 6 FT Ramp w/ Install	EA	1	2,284.96	2,284.96
Alternate Black Flow Build	LS		15,096.14	15,096.14
Subtotal				99,448.36
PUMP TRACK				
Beginner Pump Track	LS		50,000.00	50,000.00
Pump Track Landscape Upgrade (both tracks)	LS		125,000.00	125,000.00
Subtotal				175,000.00
				\$360,854.66






1 Pump Track for ADA Impact



2 Pump Track for ADA Impact



Colored Site Plan

Revised Drawing 1-11-23

- ADA/adaptive compliant
- All ages and beginner pump track
- Beginner flow line
- Intermediate flow line
- Two expert jumps at the end of the intermediate line
- City will install landscaping and HC ramps
- Fiscally constrained—meets budget

Next Steps

- Finalize design drawings and specifications
- Finalize exclusions
- Amended A141 agreement with guaranteed maximum price
- Break ground spring 2023
- Finalize construction summer 2023
- Establish slope seeding
- Open spring 2024

DESCRIPTION OF WORK / MATERIALS	UNITS	QUANTITY	PRICE PER UNIT	TOTAL
DEMOLITION				
Curb & Gutter Removal	LF	35	\$ 42.00	\$ 1,470.00
				Subtotal \$ 1,470.00
SITE PREPARATION				
Earthwork				
Surveying and staking (TBD)	LS	1	\$ 5,000.00	\$ 5,000.00
SURF Markings	LS	1	\$ 11,877.22	\$ 11,877.22
Construction Entrance	EA	1	\$ 5,234.75	\$ 5,234.75
Cut and Stockpile for Fill Material	CY	4,000	\$ 7.01	\$ 28,028.00
Import Aggregate Base Rock	CY	128	\$ 33.90	\$ 4,337.00
Final Grading	SF	80,000	\$ 0.23	\$ 18,400.00
Compaction	CY	5,000	\$ 3.81	\$ 19,050.00
				Subtotal \$ 92,837.27
Site Concrete, Flatwork and Asphalt Paving				
Aggregate Paving	SF	1,000	\$ 7.00	\$ 7,000.00
Circular Curb & Gutter	LF	10	\$ 48.71	\$ 487.09
Pedestrian Ramp	EA	2	\$ 2,160.19	\$ 4,320.37
Risk Management and Directional Signage	#	#	By Others	By Others
Entry Signage	#	#	By Others	By Others
				Subtotal \$ 13,187.66
Site Drainage				
6-in PVC	LF	72	\$ 186.84	\$ 13,452.48
ASTM C-307 Filter Fabric	CY	60	\$ 23.65	\$ 1,419.00
				Subtotal \$ 14,871.48
SITE FURNISHINGS				
Signage & pavement markings	LS	1	By Others	By Others
Sign location station	EA	1	By Others	By Others
Public Toilet	EA	2	By Others	By Others
				Subtotal \$ -
PARK FEATURES				
Main Pump Track	LS	1	\$ 250,000.00	\$ 250,000.00
Beginner Pump Track	LS	1	\$ 100,000.00	\$ 100,000.00
Green Trail Build	LS	1	\$ 70,440.29	\$ 70,440.29
Blue Trail Build with Black Alternative Line	LS	1	\$ 140,880.58	\$ 140,880.58
				Subtotal \$ 561,320.87
LANDSCAPE				
Reuse topsoil from on-site stockpile - 6-in depth, place and grade	CY	1	\$ 16.00	\$ 16.00
Soil amendments (Compost, fertilizer, mulch, etc. as required)	CY	72	\$ 143.82	\$ 10,355.79
Trails: Planting Pitt. Soil, Amendments & Irrigation	#	#	By Others	By Others
Structs: Planting Pitt. Soil, Amendments & Irrigation	#	#	By Others	By Others
Drought Tolerant Seed Mix (hydroseed)	SF	40,000	\$ 0.10	\$ 4,000.00
River cobbles @ drainage facilities (don't apply)	CY	28	\$ 70.28	\$ 1,967.84
				Subtotal \$ 18,067.63
IRRIGATION				
Single Ditch Coupler for Field Maintenance	EA	1	\$ 1,751.56	\$ 1,751.56
				Subtotal \$ 1,751.56
				Construction Subtotal \$ 708,218.52
SOFT COSTS				
Contingency	LS	1	\$ 46,761.48	\$ 46,761.48
				Not to Exceed Construction Costs \$ 754,980.00

Thank you!