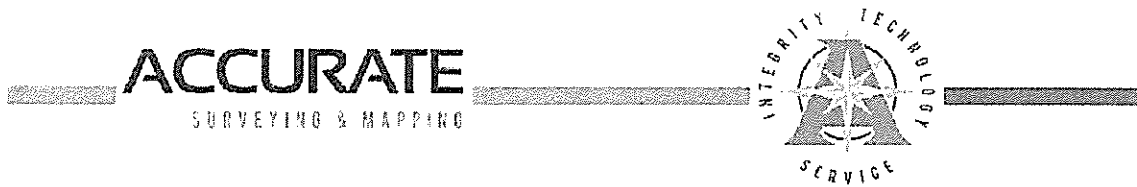


EXHIBIT A

Annexation Legal Description



Annexation Description

A parcel of land being all of Lots 8 and 9 of Heppers Acre Subdivision as recorded in Book 19 of Plats at Pages 1298 and 1299, Records of Ada County, said parcel is located in the Southwest Quarter of the Southwest Quarter of Section 12, Township 3 North, Range 1 West of the Boise Meridian, Ada County, Idaho, being more particularly described as follows:

Commencing at the found 4 inch aluminum cap monument at the corner common to Sections 11, 12, 13 and 14, T3N, R1W from which the found 3 inch brass cap monument in asphalt at the quarter corner common to Sections 11 and 12, T3N, R1W bears N 00° 32' 39" E a distance of 2645.87 feet; thence N 00° 32' 39" E along the section line for a distance of 646.92 feet to the REAL POINT OF BEGINNING;

Thence N 89° 41' 22" E for a distance of 40.00 feet to a found 5/8<sup>th</sup> inch iron pin labeled PLS 11779 at the northwest corner of Lot 8;

Thence N 89° 41' 22" E along the line common to Lots 7 and 8 for a distance of 315.19 feet to a set 5/8<sup>th</sup> inch iron pin with a cap stamped PLS 11463 at the northeast corner of Lot 8;

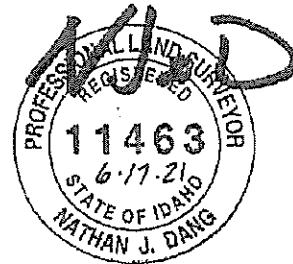
Thence S 00° 46' 31" W for a distance of 192.00 feet to a found 1/2 inch iron pin, replaced with a 5/8<sup>th</sup> inch iron pin with a cap stamped PLS 11463;

Thence S 88° 31' 38" W along the line common to Lots 9 and 10 for a distance of 314.52 feet to a set 5/8<sup>th</sup> inch iron pin with a cap stamped PLS 11463 at the southwest corner of Lot 9;

Thence S 88° 31' 38" W for a distance of 40.02 feet to a point on the section line;

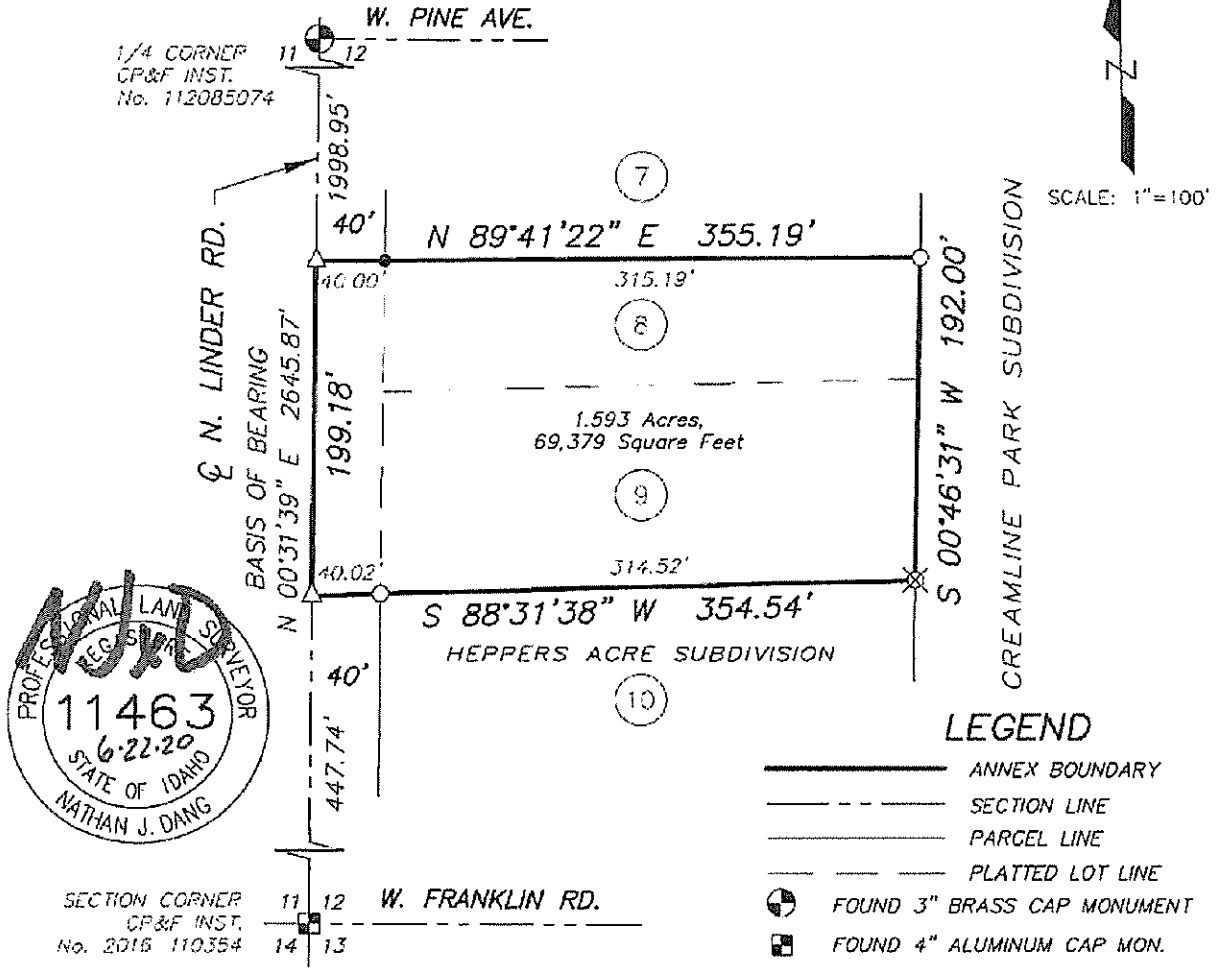
Thence N 00° 31' 39" E along the section line for a distance of 199.18 feet to the REAL POINT OF BEGINNING.

Parcel contains 1.593 acres, or 69,379 square feet, more or less.



# EXHIBIT MAP

LOTS 8 & 9, HEPPERS ACRE SUBDIVISION,  
 BOOK 19 OF PLATS, PAGES 1298-1299, ADA COUNTY RECORDS.  
 LYING WITHIN THE SW 1/4 OF THE SW 1/4 OF SECTION 12, T.3N., R.1W., B.M.  
 COUNTY OF ADA — STATE OF IDAHO



## LEGEND

- ANNEX BOUNDARY
- SECTION LINE
- PARCEL LINE
- PLATTED LOT LINE
- ⊕ FOUND 3" BRASS CAP MONUMENT
- ⊕ FOUND 4" ALUMINUM CAP MON.
- SET 5/8" IRON PIN WITH 2" ALUMINUM CAP, PLS 11463
- △ CALCULATED POINT
- ⊗ FOUND DISTURBED 1/2" IRON PIN, REMOVED AND REPLACED WITH 5/8" IRON PIN, WITH 2" ALUMINUM CAP, PLS 11463
- FOUND 1/2" IRON PIN, WITH PLASTIC CAP, AS NOTED
- ⑨ PLATTED LOT NUMBER

**ACCURATE**  
 SURVEYING & MAPPING

1602 W. Hays Street #306  
 Boise, Idaho 83702  
 (208) 488 4227  
 www accuratesurveyors.com

INTEGRITY TECHNOLOGY SERVICE

DATE: JUNE, 2021      JOB 21-211