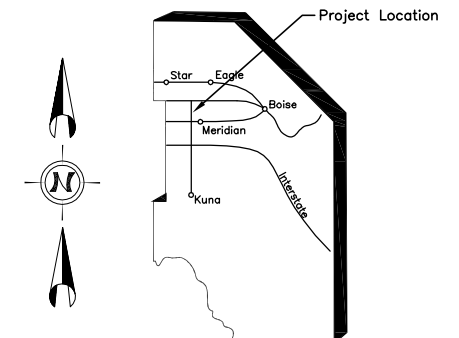


EXHIBIT A

# Ada County Highway District

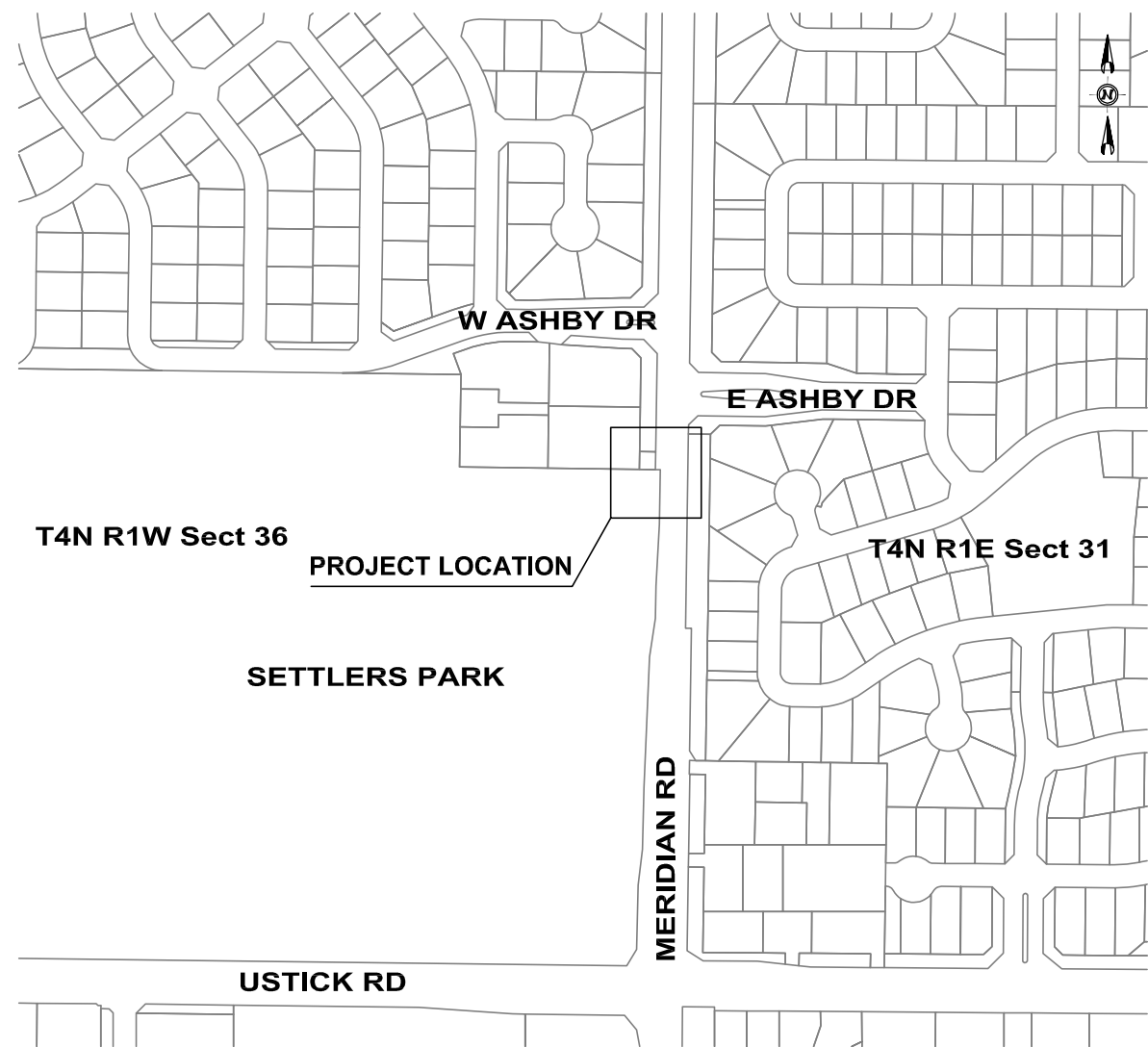
**Project Name: Meridian Rd & Settlers Park PHB**  
**Project Number: 323038.05**  
**GIS No: 208469.05**



ADA COUNTY

INDEX OF SHEETS

Sheet No.	Description
1.	Title Sheet
2.	Plan & Profile - Sta. 18+00 - 22+00
3.	PHB Plan & Details
4.	PHB Pole Elevations
5.	Construction Signage



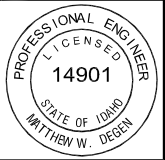
Vicinity Map  
N.T.S.

Parcel ID No.	Parcel Assessor ID Number	Record Owner	Assessed Ownership Size (SF)	Prescriptive ROW (SF)	RoadBook ROW (SF)	Right Of Way Required (SF)	Easements (SF)		Remaining Ownership Size (SF)	Construction Sheet Number	Adjacent Project Numbers	Project/Sub-Project Number
							Perm. (S,U,D)	Temp				
1	S0436449681	CITY OF MERIDIAN	2,414,923	-	-	-	-	-	-	2, 3	-	-

Right Of Way Requirements

- Sod Repair
- Asphalt Repair
- Gravel Repair
- Landscape Rock

Certification Of Compliance With Standards  
 The Design And Plans Have Been Prepared In Substantial Conformance With The Policy, Design, And Drafting Standards In Effect At The Time Of Preparation.



LEGEND

- (See Standards For Specifics)
- C.L. of Construction or Survey
- Existing Profile or X-Section Line
- Existing Edge of Pavement or Gravel
- Existing Drain or Irrigation Pipe
- Existing Ditch or Flow line
- Existing Property or Right of Way Line
- Existing Fence and Gate
- Existing Slope
- Existing Curb & Gutter
- Existing Curb(No Gutter)
- Existing Concrete Sidewalk
- Existing Curb,Gutter,Sidewalk and Approach
- Existing Utility Line With Initial
- Water Valve or Meter
- Gas Valve or Meter
- Fire Hydrant
- Signal Pole
- Light Pole
- Utility Pole With Anchor
- Sign, Stop/Street Sign and Mailbox
- Existing and New Manholes
- Existing and New Catch Basin
- New Sediment Box
- Existing and New Irrigation Box
- Deciduous And Evergreen Tree
- Deciduous And Evergreen Bushes
- Existing Building
- River, Creek, or Canal
- Revision Note
- Construction Note
- Street Address
- Property Number or Curve Number
- Bench Mark and Monument
- Section & 1/4 Section Corner
- Design Plan Edge of Pavement or Gravel
- Design Profile For TC or Pipes
- Design Profile Grade Break
- Design Profile PC or PT
- Design Ditch or Flow line
- Design SD or Irrg. Pipe on Plan View
- New Property or Right of Way Line
- New Easement Line
- New Retaining Wall
- Limits of Cut Slope
- Limits of Fill Slope
- Section Line
- New Curb and Gutter
- New Curb,Gutter,Sidewalk, and Approach
- New Ped Ramp
- New Valley Gutter

UTILITIES

- T Relocate To New Location And/Or Adjust To Grade To Avoid New Roadway Construction By Lumen
- G Relocate To New Location And/Or Adjust To Grade To Avoid New Roadway Construction By Intermountain Gas
- P Relocate To New Location And/Or Adjust To Grade To Avoid New Roadway Construction By Idaho Power
- TV Relocate To New Location And/Or Adjust To Grade To Avoid New Roadway Construction Sparklight
- FO Relocate To New Location And/Or Adjust To Grade To Avoid New Roadway Construction By Owner

Utility Coordination Was Requested Through Achd During Design Of This Project. Utility Information Is Shown Only For Surface Features And If Provided By The Owner Of The Utility For Non-surface Features.

Utility Adjustments, Relocations, Or Replacements May Or May Not Be Completed Prior To Construction. The Contractor Shall Coordinate And Accommodate Work With The Utility Companies.

Call Digline 2 Business Days Prior To Excavation. Ph. # 811 To Request Underground Utility Locates

Contact Scott Bennett  
 ACHD Utility Supervisor  
 For Information Call 387-6259



Date: July 2023 100% Complete  
 Surveyed By: ACHD  
 Date: April 2024  
 Drawn By: C Johnston  
 Date: April 2024  
 Project Name: Meridian Road & Settlers Park PHB  
 Project No: 323038.05  
 ACHD

# NOTES

- 1 Removal Of Obstructions, Item 201.4.1.C.1
- 31 Concrete Sidewalks, Thickness 5", Item 706.4.1.E.1.5
- 36 Ped. Ramp w/ Detectable Warning Domes, Type Special, Item 706.4.1.H.1
- 38 Asphalt Repair - Other, Item SSP 08125
- 39 Gravel Repair, Item SP 02020
- 40 Retain & Protect
- 42 Furnish Roadside Sign Face, Item 1135.01.05
- 44 Remove & Reset Sprinkler System, Item SSP 29101
- 47 Roadside Traffic Sign Installation (One Metal Post) Item 1135.01.01
- 48 Sod Repair (Includes 4" Topsoil), Item SSP 29064
- 49 Install Traffic Signal Interconnect Conduit (Bored) Item 1131.01.02.B

## PAVEMENT MARKING LEGEND

Ref. ACHD Standard Traffic Details (TS Series) For Construction Details & Installation Requirements

- 18  24" White - Cross Walk - Thermoplastic Item No. 1134.05.21
- 19  24" White - Stop Bar - Thermoplastic Item No. 1134.05.21

NOTE:  
9' Wide Thermoplastic Tape (2' With 4' Gap) Should Be Installed Across Meridian Rd., Centered On The Pedestrian Ramps Parallel To Approaching Traffic.

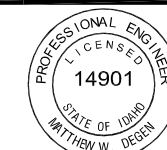
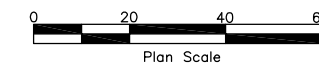
## CONTROL:

■ CNTL #1 Corner Monument 10+00 Offset 0' Lt/Rt  
X=2,454,720.69  
Y=717,658.96  
Z=2,590.90

○ CNTL #2 5/8 IR Sta 22+89 Offset 0' Lt/Rt  
X=2,454,739.83  
Y=718,947.87  
Z=2,589.61

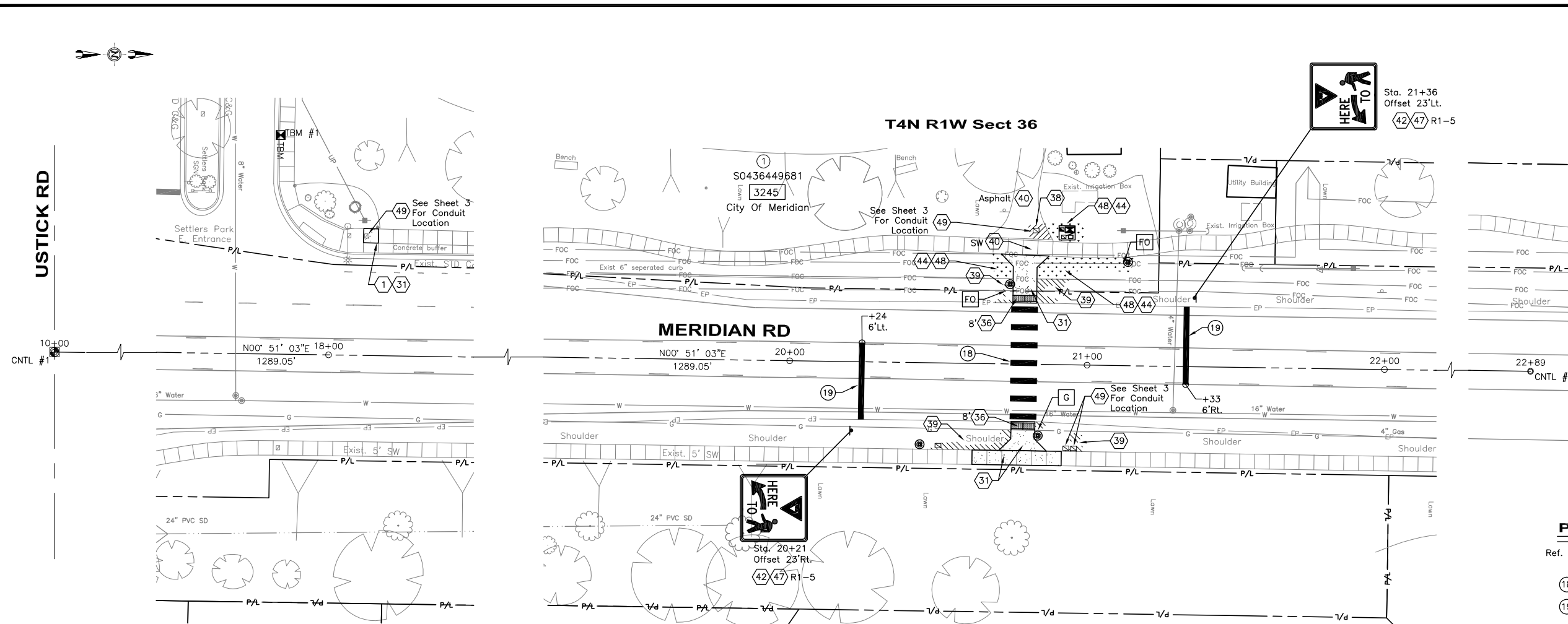
## BENCH MARKS:

■ TBM #1 Chiseled Box In Concrete  
X= 2,454,658.60  
Y= 718,442.80  
Z= 2590.82

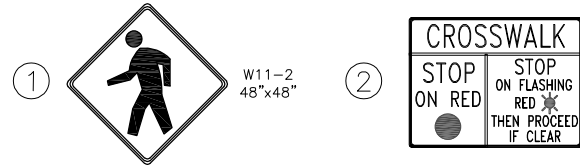


### T4N R1W Sect 36

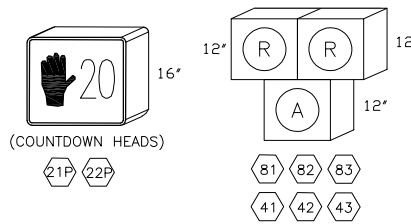
### T4N R1E Sect 31



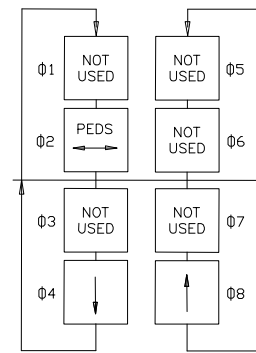
**SIGNS**



**SIGNAL HEAD SCHEDULE**

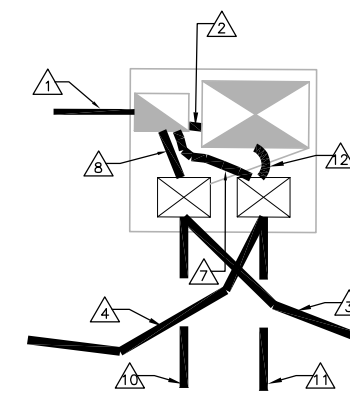


**PHASING DIAGRAM**



**NOTES**

- All Traffic Control Devices Shall Conform To The Latest Edition Of The Manual On Uniform Traffic Control Devices (MUTCD).
- Refer To ACHD Standard Traffic Details (TS Series) For Construction Details And Installation Requirements.
- The Conduit Layout Shown Is Schematic. The Contractor Shall Maintain The Appropriate Clearance Between Adjacent Utilities
- Information Shown On This Sheet Is Accurate Only For Pedestrian Hybrid Beacon Improvements.
- The Locations Of The Signal Cabinet, Service Pedestal And Signal Poles Shall Be Staked In The Field For Approval By ACHD Prior To Installation. ACHD Forces Shall Be Notified A Minimum Of Two (2) Working Days Prior To Installation.
- Warning And Regulatory Signs Mounted On The Mast Arms And Signal Poles Are Incidental To PHB Installation And Are Not Paid For Separately.
- All Pedestrian Push Buttons Shall Have An Audible Component Consistent With Guidelines Provided In The Americans With Disabilities Act, The MUTCD And ACHD Specifications.
- Install 1-4C In The AGPS SPI Unit Located In The Pedestrian Signal Head To The AGPS Push Button Assembly.
- Locations Of Existing Underground Utilities Shown On The Plans Are Approximate Only. It Is Not The Intent Of These Plans To Show The Exact Location Of All Underground Utilities And Structures. It Is The Responsibility Of The Contractor To Verify The Locations Of All Existing Utilities With The Respective Owners. Existing Utilities Damaged By The Contractor Shall Be Repaired By The Contractor. Call Digline 48 Hours Prior To Excavation To Request Underground Utility Locations. Telephone: (800) 342-1585.
- Crosswalk Marking Are Not Shown For Clarity.
- Refer To Plan & Profile, Sheet 2, For Additional Roadside Mounted Signs Related To The Installation Of The PHB Signal.
- Ground The PHB Signal And Illumination System In Accordance With The Current Edition Of The NEC And The ACHD Traffic Supplemental Provisions.
- Pedestrian Push Button Extension Arm Shall Be Installed When The Maximum Distance From Face Of Curb Or Back Of Pedestrian Ramp And Pedestrian Push Button Exceeds 10" At Any Location. Pedestrian Push Button With Extension Not To Obstruct Pedestrian Walking Path.
- Conduit Shall Be Bored With Bid Item 1131.01.02.B.



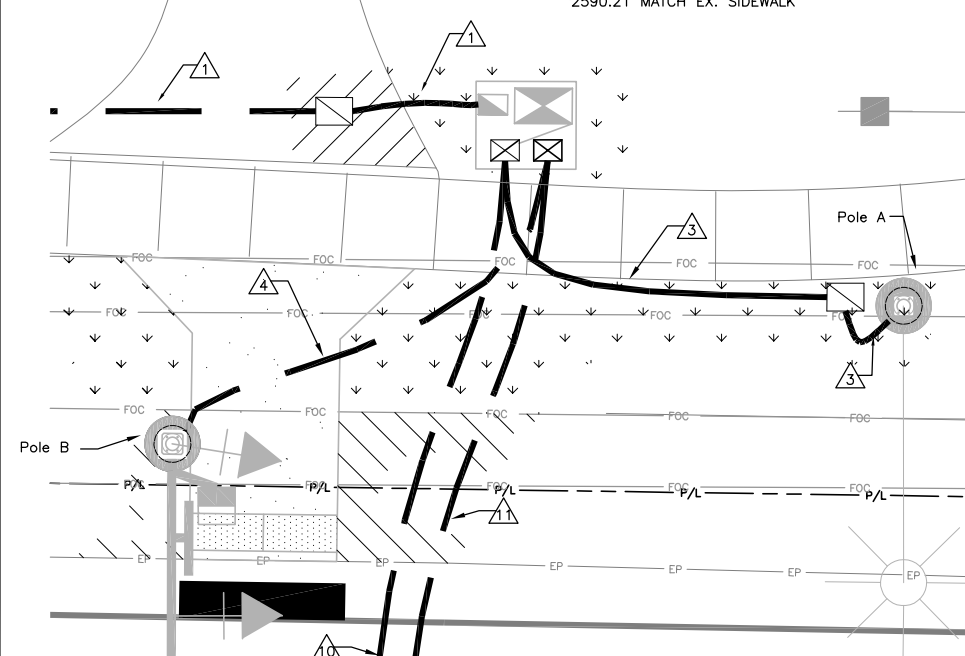
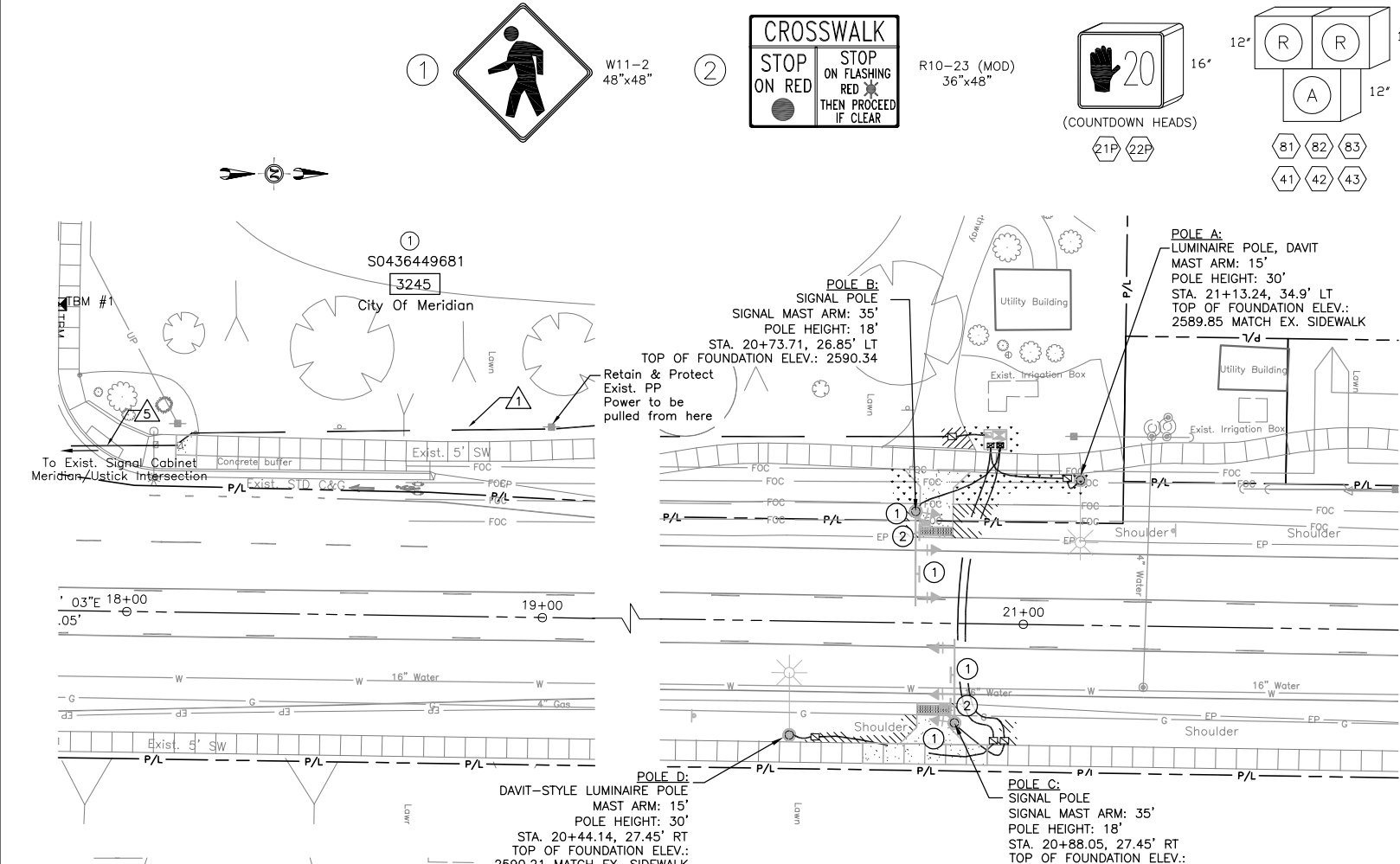
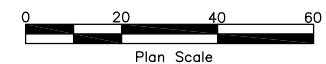
**SIGNAL CABINET**  
(N.T.S.)

**CONDUCTOR SCHEDULE**

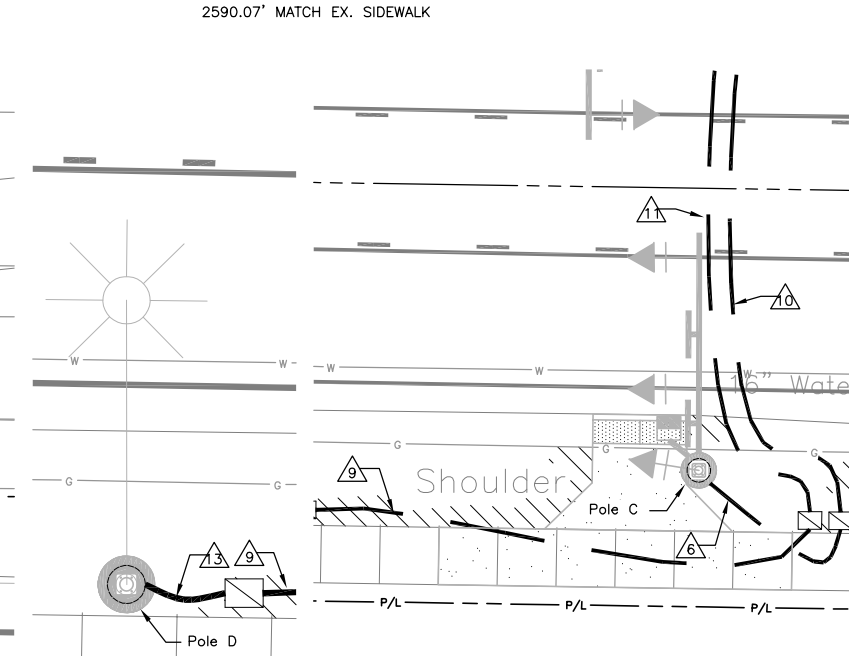
NO.	CONDUIT	CONDUCTORS
1	2" RPC	3/0 COPPER, 4/0 ALUMINUM (200A SERVICE)
2	2" RPC	2-#6, 1-#6 BARE (SIGNAL CABINET SERVICE)
3	2" RPC	2-#6, 1-#6 BARE (LIGHTING, POLE A)
4	2" RPC	2-5C, 1-#6 BARE (POLE B)
5	EXIST. RPC	1-#12 FIBER (EXISTING SIGNAL CABINET, MERIDIAN/USTICK INTERSECTION)
6	2" RPC 2" RPC	2-#6, 1-#6 BARE (POLE C) 2-#6, 1-#6 BARE
7	2" RPC 2" RPC	SPARE (INCLUDE LOCATE WIRE) SPARE (INCLUDE LOCATE WIRE)
8	2" RPC 2" RPC	1-5C, 1-#6 BARE SPARE
9	2" RPC 2" RPC	2-#6, 1-#6 BARE (LIGHTING) SPARE (INCLUDE LOCATE WIRE)
10	2" RPC 2" RPC	1-5C, 1-#6 BARE SPARE (INCLUDE LOCATE WIRE)
11	2" RPC 2" RPC	2-#6, 1-#6 BARE SPARE (INCLUDE LOCATE WIRE)
12	2" RPC 2" RPC 2" RPC	2-5C, 1-#6 BARE 2-5C, 1-#6 BARE SPARE
13	2" RPC 2" RPC	2-5C, 1-#6 BARE 2-#6, 1-#6 BARE

**LEGEND**

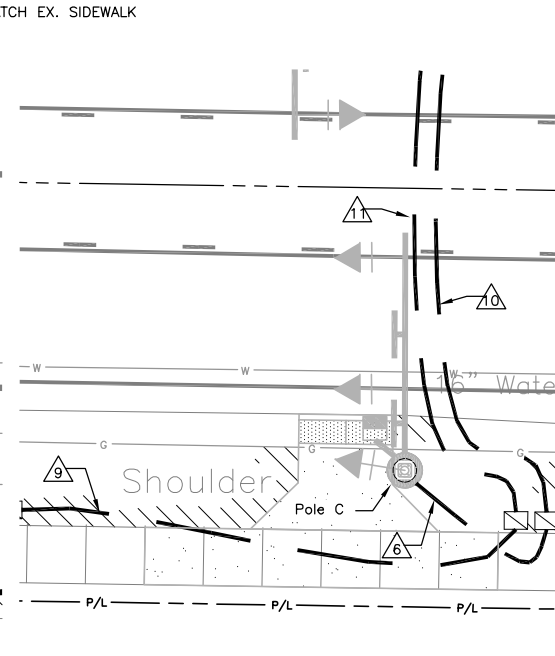
- Controller Cabinet And Service Pedestal
- S-40T/ADA Junction Box
- S-45T/ADA Junction Box
- S-45T/ADA Junction Box With Riser
- Splice Vault (25-TA)
- Luminaire Pole With Luminaire Mast Arm
- Signal Pole With Mast Arm And Signal Heads
- Luminaire Pole With Signal & Luminaire Mast Arms And Signal Heads
- Signal Head With Backplate
- Pedestrian Signal Head
- Conduit Group
- Signal Head Number
- Conduit Group Number
- Sign Number
- Project Note Number



**DETAIL A**  
(N.T.S.)



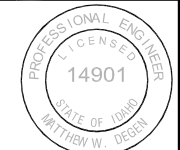
**DETAIL B**  
(N.T.S.)

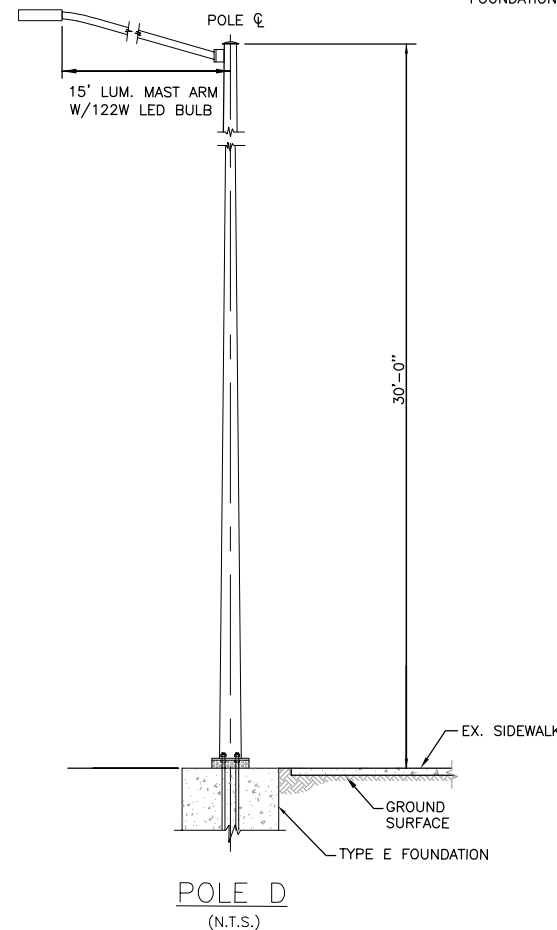
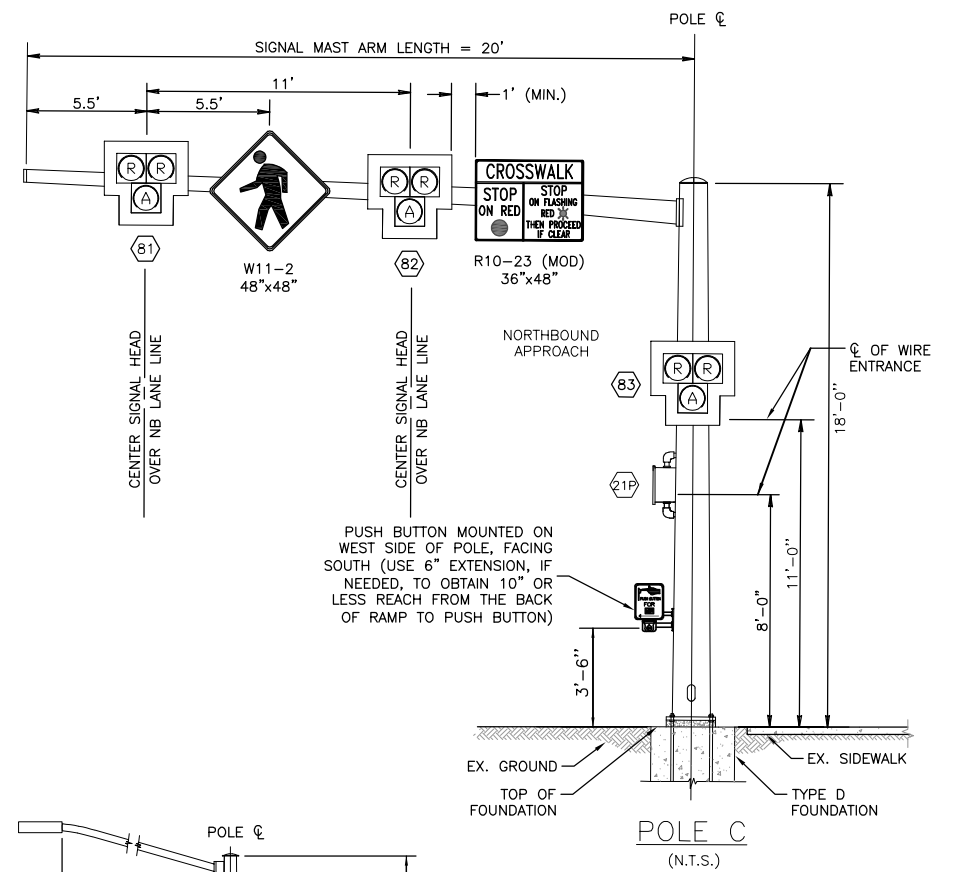
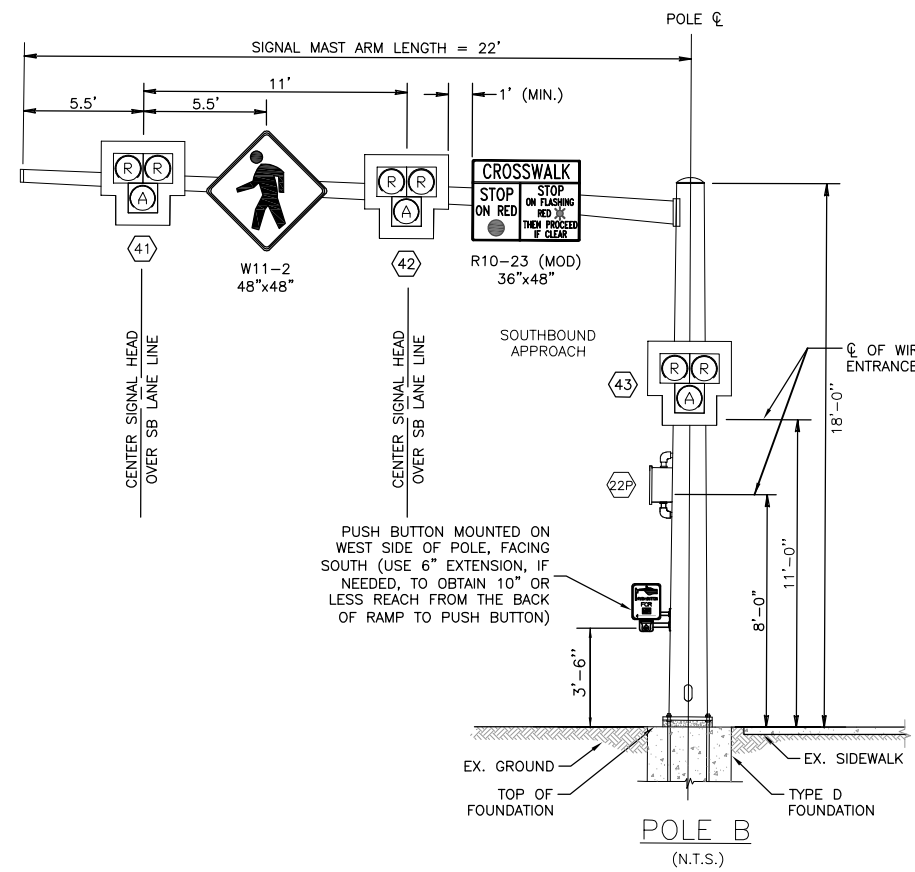
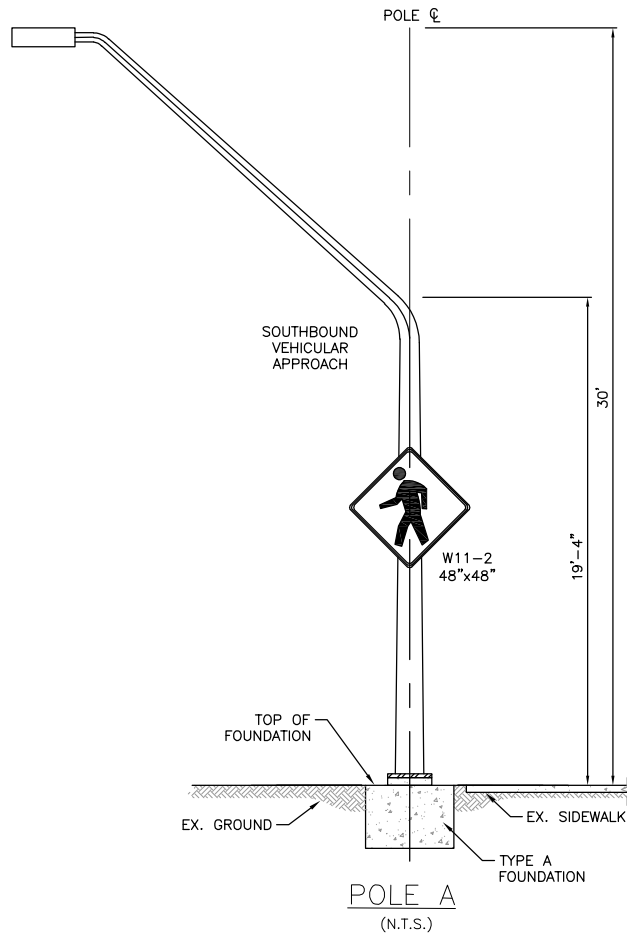


**DETAIL C**  
(N.T.S.)

Revisions:	• S I G N A T U R E S •		
Design By: C Johnston	Date: April 2024	Drawn By: C Johnston	Date: April 2024

• D E T A I L T I T L E •  
**PHB PLAN & DETAILS**





**SIGNAL MATERIALS**

POLE	POLE TYPE	SIGNAL MAST ARM	LUMINAIRE	SIGNAL MOUNTING LOCATION	SIGNAL MOUNTING BRACKETS	MAST ARM SIGNS	FOUNDATION SEE TS-1110
POLE A	DAVIT-STYLE LUMINAIRE POLE POLE HEIGHT = 30'	N/A	15' M.A. 138W LED	N/A	N/A	N/A	A
POLE B	SIGNAL POLE POLE HEIGHT = 18'	22'	N/A	5.5' FROM E.O. MAST ARM 16.5' FROM E.O. MAST ARM POLE MOUNTED	ASTRO BRACKET ASTRO BRACKET POLE MOUNTED	W11-2 (48"x48") R10-23 (36"x48") (MOD)	D
POLE C	SIGNAL POLE POLE HEIGHT = 18'	20'	N/A	5.5' FROM E.O. MAST ARM 16.5' FROM E.O. MAST ARM POLE MOUNTED	ASTRO BRACKET ASTRO BRACKET POLE MOUNTED	W11-2 (48"x48") R10-23 (36"x48") (MOD)	D
POLE D	LUMINAIRE POLE POLE HEIGHT = 30'	N/A	15' M.A. 122W LED	N/A	N/A	N/A	E

NOTE: THE BACKFILL FOR THE POLE FOUNDATIONS SHALL BE CONTROLLED DENSITY FILL.

Revisions:

• S I G N A T U R E S •

Design By: C Johnston

Date: April 2024

Drawn By: C Johnston

Date: April 2024

• D E T A I L T I T L E •

**PHB POLE ELEVATIONS**

