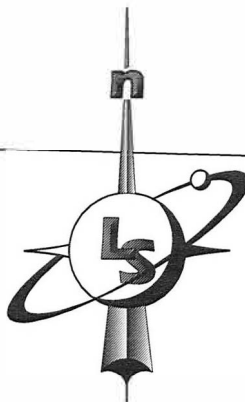
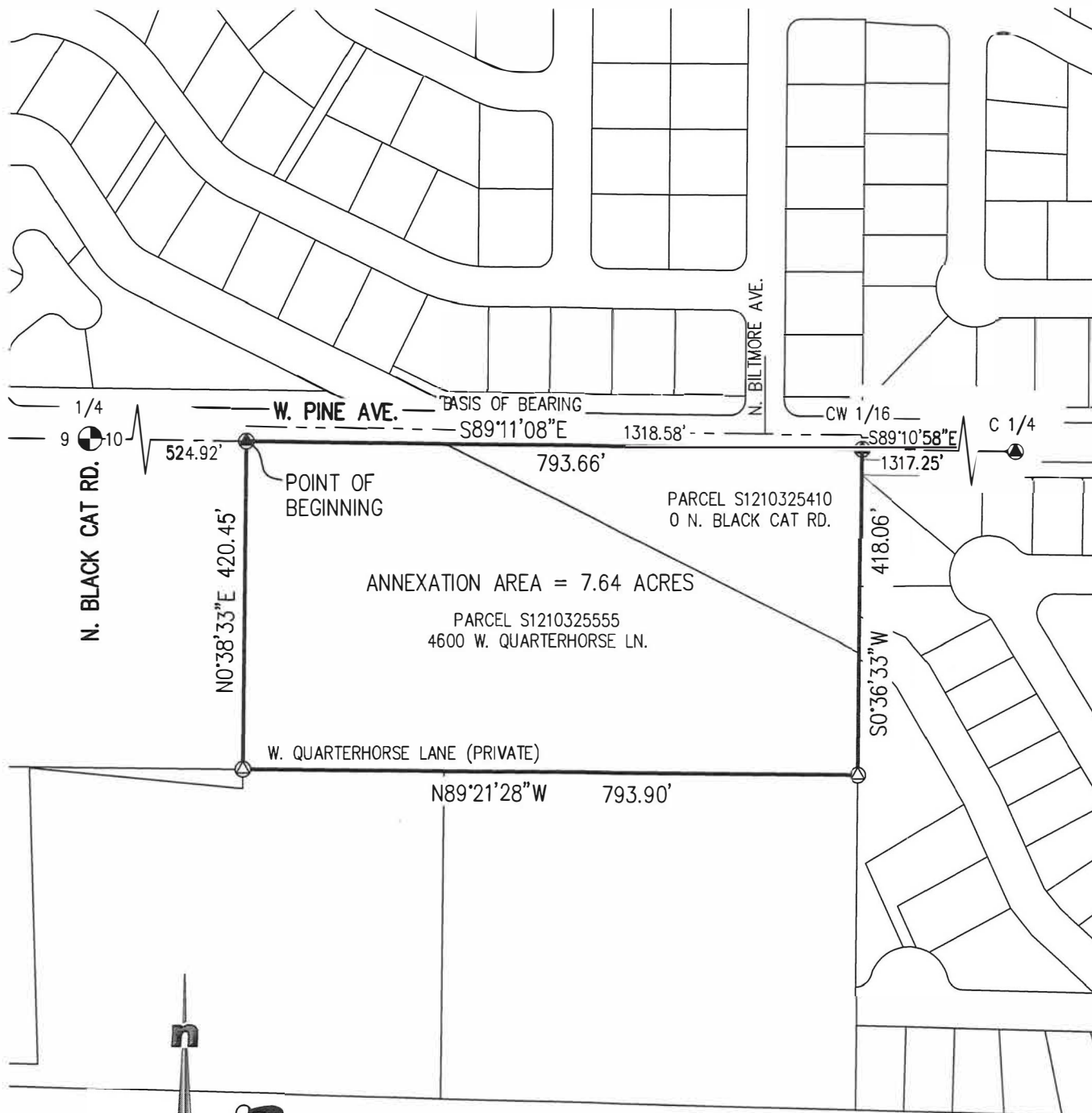


PROPOSED PIVOT POINTE SUBDIVISION ANNEXATION

LOCATED IN THE NW 1/4 OF THE SW 1/4 OF SECTION 10, TOWNSHIP 3 NORTH, RANGE 1 WEST, BOISE MERIDIAN, ADA COUNTY, IDAHO



LandSolutions
Land Surveying and Consulting

231 E. 5TH ST.
MERIDIAN, ID 83642
(208) 288-2040 (208) 288-2557 fax
www.landsolutions.biz