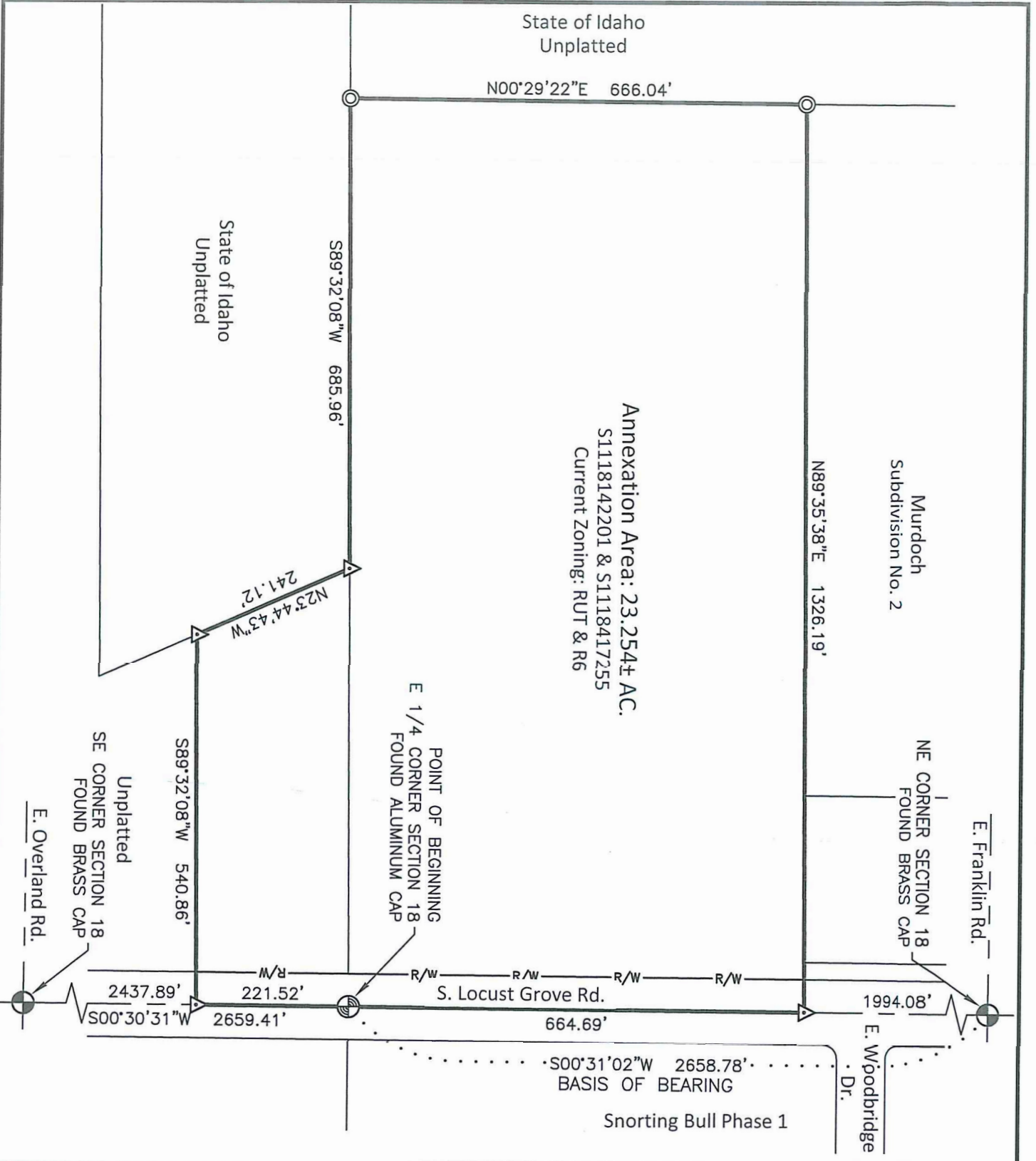


EXHIBIT B

P:\19-069\CAD\SURVEY\19-069 ANNEXATION EXHIBIT.DWG, AARON BALLARD, 6/7/2024, ESTUDIO907.PC3, ----



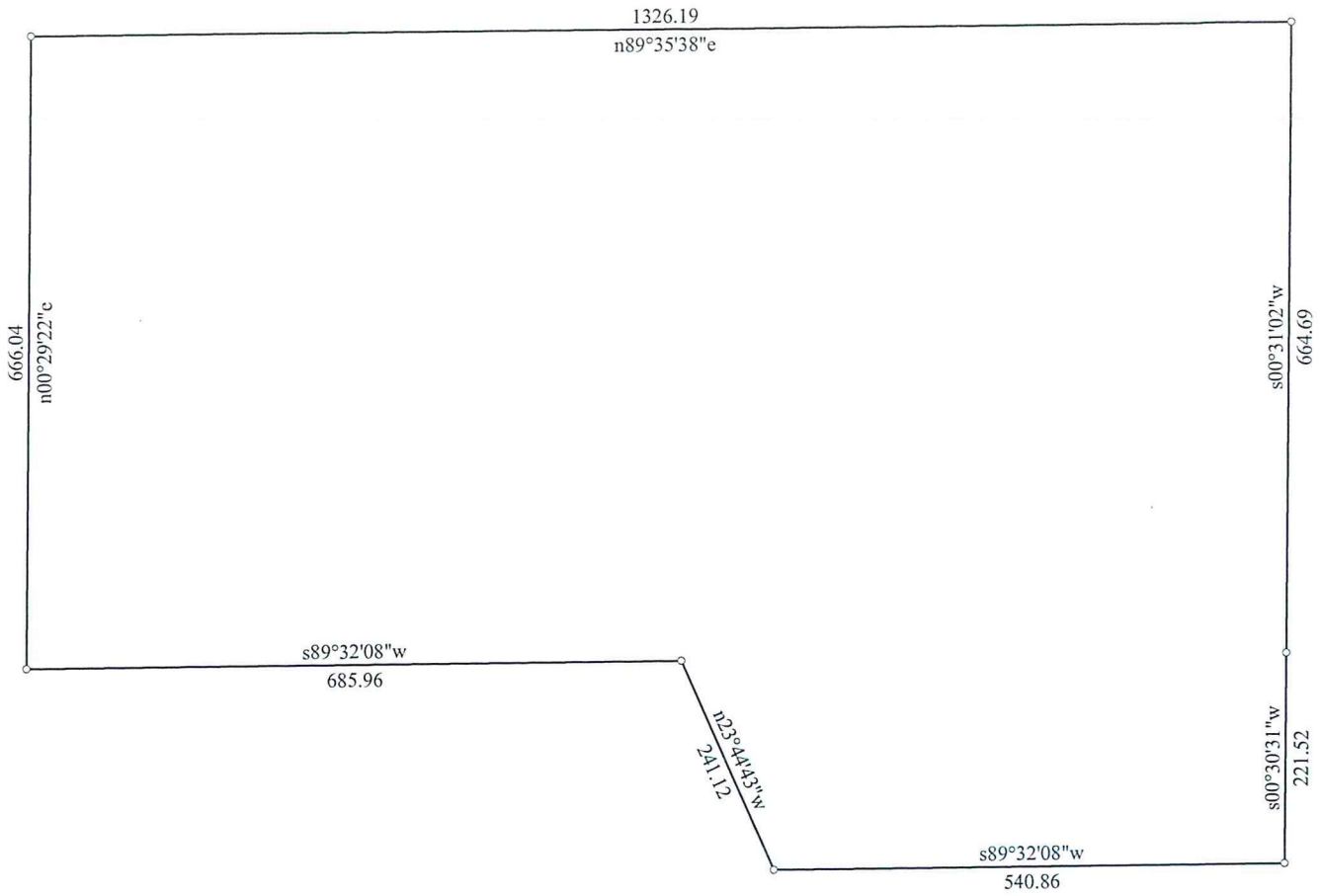
**Exhibit B - Annexation
State of Idaho Board of Education**

The S 1/2 of the SE 1/4 of the NE 1/4 and a portion of the NE 1/4 of the SE 1/4 of Section 18, T3N, R1E, BM, Ada County, ID

DATE: June 2024
PROJECT: 19-069

SHEET: 1 OF 1

KM ENGINEERING
ENGINEERS, SURVEYORS, PLANNERS
9233 WEST STATE STREET
BOISE, IDAHO 83714
PHONE (208) 639-6939
FAX (208) 639-6930



Title:		Date: 06-07-2024
Scale: 1 inch = 200 feet	File:	
Tract 1: 23.254 Acres: 1012945 Sq Feet: Closure = s58.4213w 0.01 Feet: Precision = 1/476082: Perimeter = 4346 Feet		
001=s00.2922e 666.04	004=s89.3208w 685.96	007=s00.3102w 664.69
002=s89.3208w 540.86	005=n00.2922e 666.04	
003=n23.4443w 241.12	006=n89.3538e 1326.19	