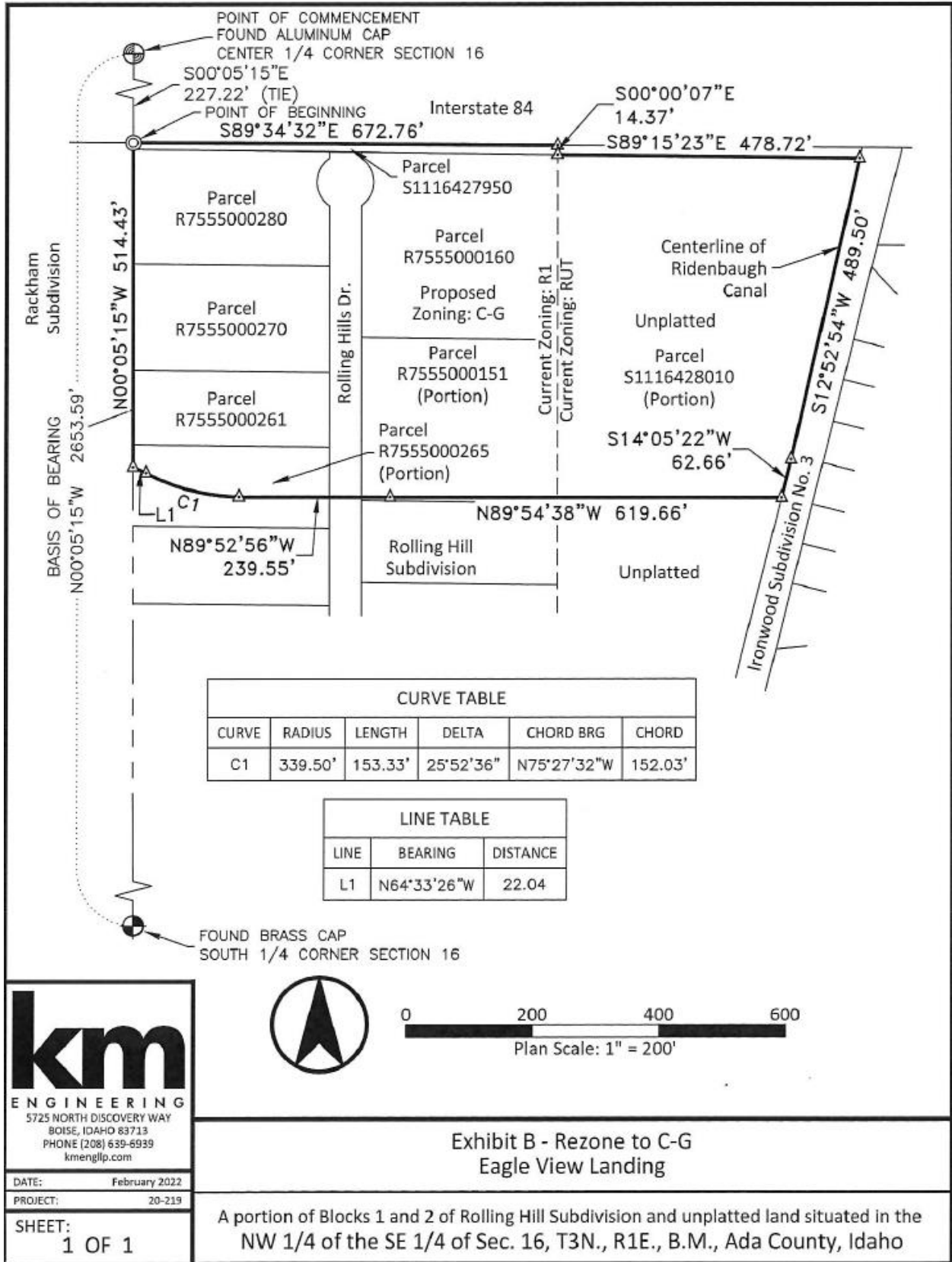
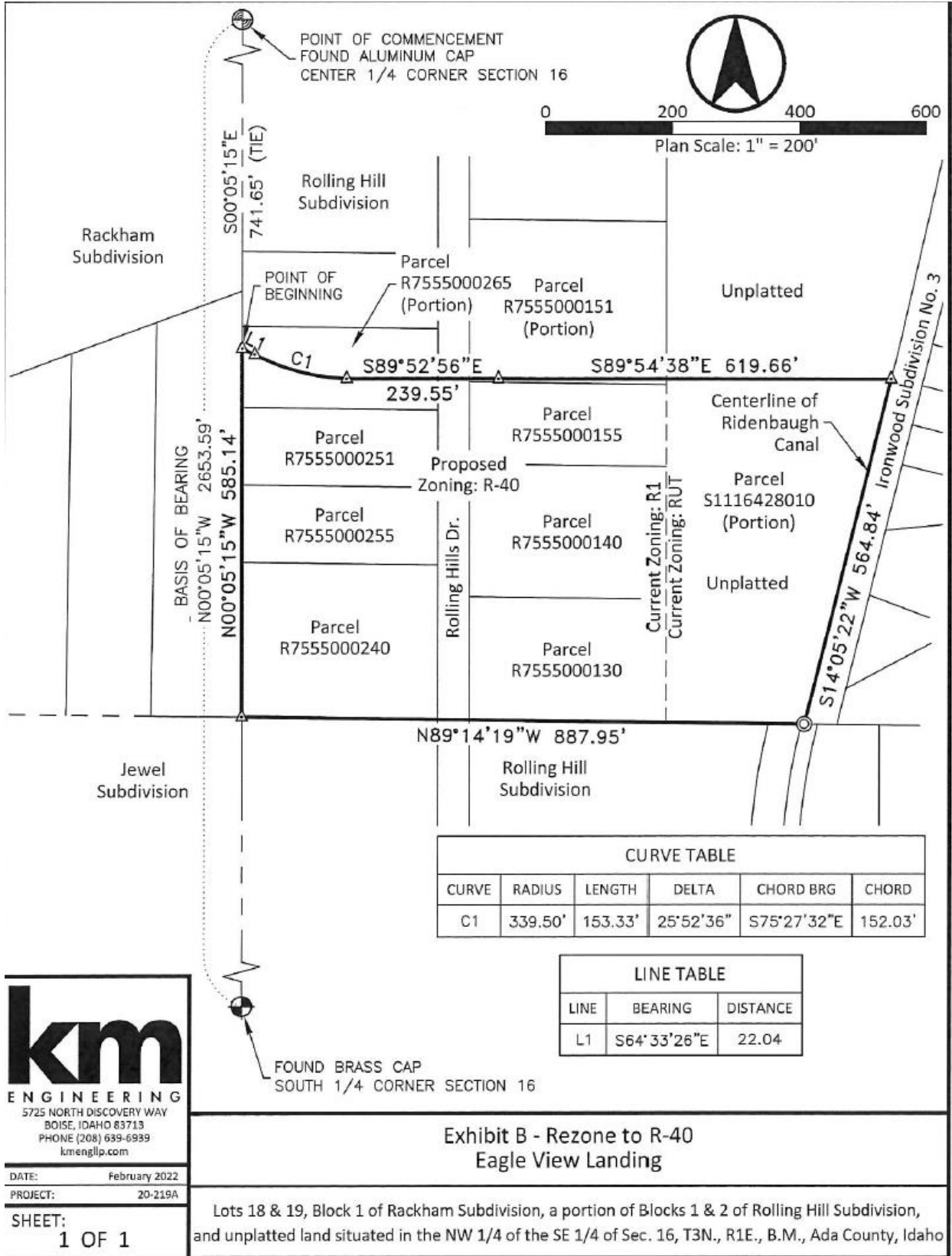


# EXHIBIT B



# EXHIBIT B



DATE: February 2022  
PROJECT: 20-219A

SHEET:  
1 OF 1

## Exhibit B - Rezone to R-40 Eagle View Landing

Lots 18 & 19, Block 1 of Rackham Subdivision, a portion of Blocks 1 & 2 of Rolling Hill Subdivision, and unplatted land situated in the NW 1/4 of the SE 1/4 of Sec. 16, T3N., R1E., B.M., Ada County, Idaho