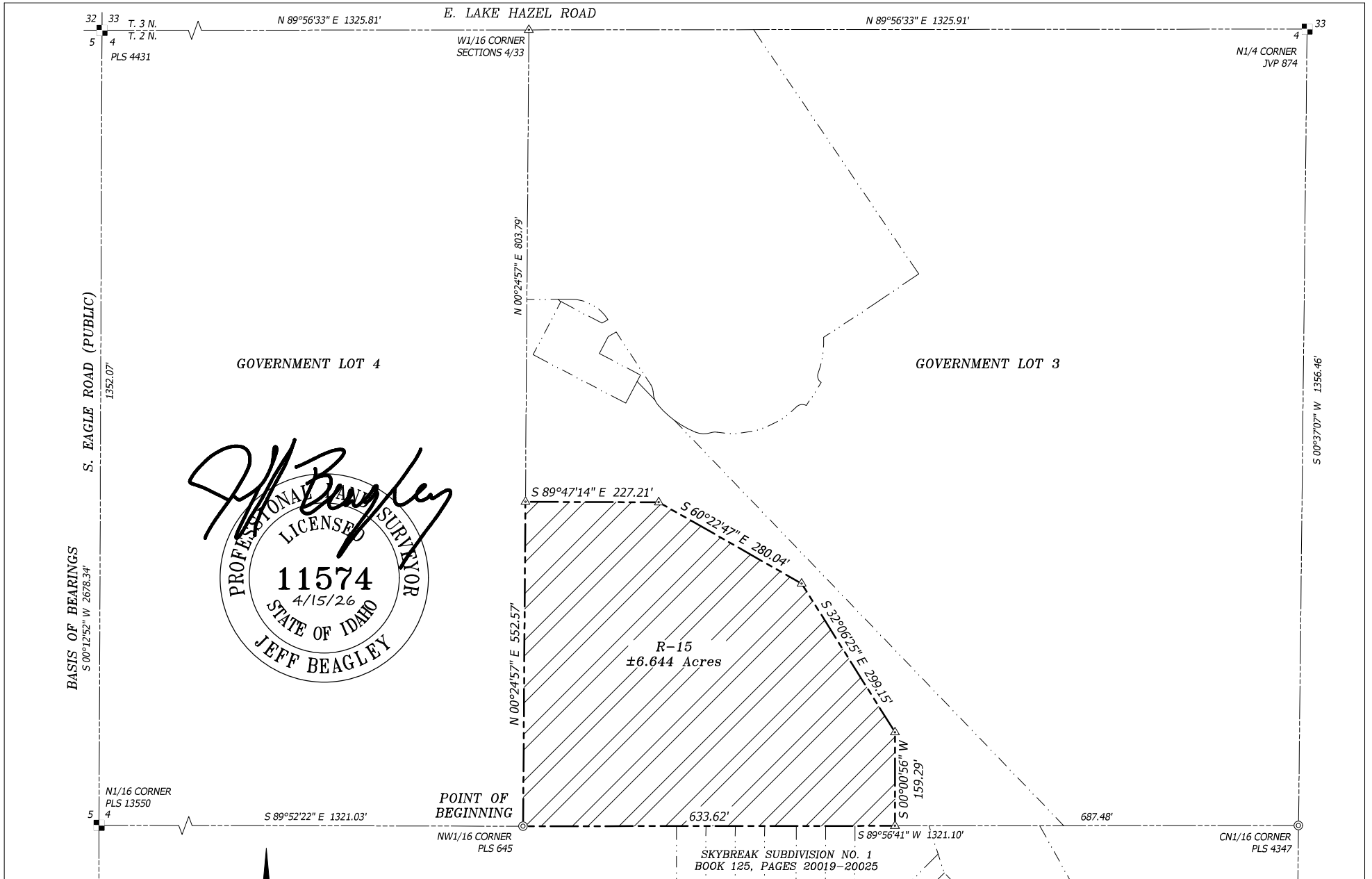


EXHIBIT B



<p>PROJECT:</p> <p>SKYBREAK RIM SUBDIVISION R15 REZONE EXHIBIT THE NE1/4 OF THE NW1/4 SECTION 4, T. 2 N., R. 1 E., B.M., ADA COUNTY, IDAHO</p>	<p>OWNER/DEVELOPER:</p> <p>DATE:</p>	 <p>2030 S. WASHINGTON AVE. EMMETT, ID 83617 P: (208) 398-8104 F: (208) 398-8105 WWW.SAWTOOTHLS.COM</p>	<p>DWG # 125081-EX</p> <p>PROJECT# 125081</p> <p>SHEET 1 OF 1</p>
---	---	--	--

