

GRANTEE: CITY OF MERIDIAN

Robert E. Simison, Mayor

Attest by Chris Johnson, City Clerk

STATE OF IDAHO,)
 : ss.
County of Ada)

This record was acknowledged before me on _____ (date) by Robert E. Simison and Chris Johnson on behalf of the City of Meridian, in their capacities as Mayor and City Clerk, respectively.

Notary Stamp Below

Notary Signature
My Commission Expires: _____

Exhibit A
City of Meridian Sewer and Water Easement
Aviation Subdivision
February 20, 2024

A portion of the West 1/2 of the Southwest 1/4 of Section 10, Township 3 North, Range 1 West, Boise Meridian, City of Meridian, Ada County, Idaho, more particularly described as follows:

Commencing at the Section corner common to Sections 9, 10, 15, and 16, Township 3 North, Range 1 West, Boise Meridian, from which the 1/4 corner common to said Sections 9 and 10 bears North 0°38'55" East, 2653.02 feet; thence North 38°27'39" East, 1576.03 feet to the **POINT OF BEGINNING**;

thence North 35°01'14" West, 20.00 feet;

thence North 54°58'46" East, 22.69 feet;

thence North 79°58'46" East, 126.42 feet;

thence North 26°13'45" East, 21.57 feet;

thence 19.40 feet on the arc of a curve to the left having a radius of 31.00 feet, a central angle of 35°51'18", and a long chord which bears North 18°32'56" East, 19.08 feet;

thence North 00°37'17" East, 30.79 feet;

thence North 43°54'28" West, 43.48 feet;

thence North 88°26'12" West, 178.66 feet;

thence North 00°36'35" East, 25.00 feet;

thence South 88°26'12" East, 17.71 feet;

thence North 01°33'48" East, 41.00 feet;

thence South 88°26'12" East, 20.00 feet;

thence South 01°33'48" West, 41.00 feet;

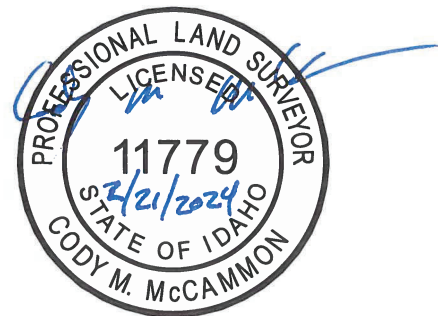
thence South 88°26'12" East, 65.50 feet;

thence North 01°33'48" East, 41.00 feet;

thence South 88°26'12" East, 20.00 feet;

thence South 01°33'48" West, 41.00 feet;

thence South 88°26'12" East, 45.74 feet;



thence North 06°35'03" East, 41.16 feet;

thence South 88°26'12" East, 20.08 feet;

thence South 06°35'03" West, 42.04 feet;

thence 1.92 feet on the arc of a curve to the right having a radius of 56.00 feet, a central angle of 01°57'44", and a long chord which bears South 77°17'58" East, 1.92 feet;

thence North 53°00'09" East, 67.78 feet;

thence South 88°26'12" East, 32.09 feet;

thence South 53°00'09" West, 82.37 feet;

thence 16.61 feet on the arc of a curve to the right having a radius of 56.00 feet, a central angle of 16°59'54", and a long chord which bears South 44°33'03" East, 16.55 feet;

thence South 89°23'25" East, 52.06 feet;

thence South 00°36'35" West, 20.00 feet;

thence North 89°23'25" West, 42.62 feet;

thence 13.58 feet on the arc of a curve to the right having a radius of 56.00 feet, a central angle of 13°53'41", and a long chord which bears South 06°19'33" East, 13.55 feet;

thence South 00°37'17" West, 15.84 feet;

thence South 89°23'25" East, 40.98 feet;

thence South 00°36'35" West, 20.00 feet;

thence North 89°23'25" West, 41.22 feet;

thence 5.65 feet on the arc of a curve to the right having a radius of 56.00 feet, a central angle of 05°46'54", and a long chord which bears South 08°41'18" West, 5.65 feet;

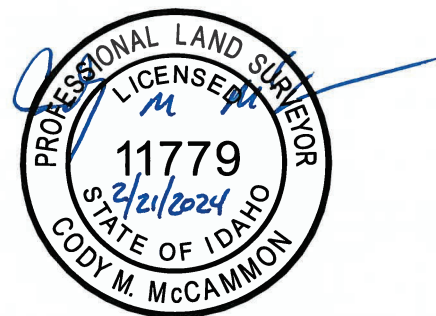
thence South 54°52'58" East, 50.98 feet;

thence South 00°36'35" West, 24.27 feet;

thence North 54°52'58" West, 60.12 feet;

thence 27.11 feet on the arc of a curve to the right having a radius of 56.00 feet, a central angle of 27°44'24", and a long chord which bears South 46°34'05" West, 26.85 feet;

thence South 09°47'39" East, 38.62 feet;



thence South 81°27'40" West, 20.00 feet;

thence North 09°47'39" West, 34.89 feet;

thence 1.21 feet on the arc of a curve to the right having a radius of 56.00 feet, a central angle of 01°14'16", and a long chord which bears South 81°54'34" West, 1.21 feet;

thence South 82°31'42" West, 19.71 feet;

thence South 07°28'11" East, 35.13 feet;

thence South 80°12'21" West, 20.02 feet;

thence North 07°28'11" West, 34.94 feet;

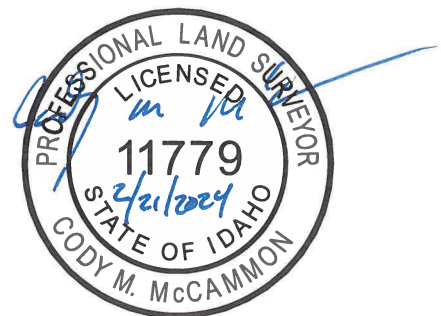
thence South 82°43'20" West, 35.93 feet;

thence South 69°40'30" West, 35.89 feet;

thence South 54°58'46" West, 18.25 feet to the **POINT OF BEGINNING**.

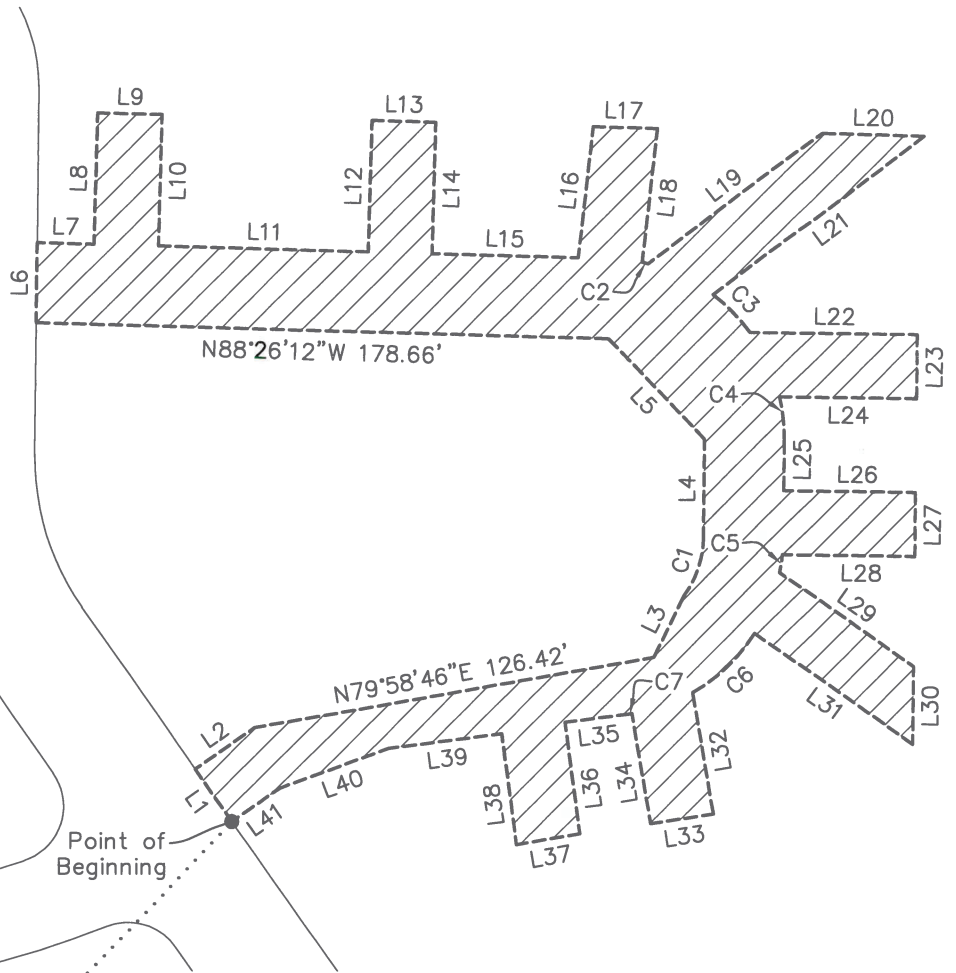
Containing 19,009 square feet or 0.436 acres, more or less.

End of Description.



1/4
S.9 S.10

Basis of Bearing
N00°38'55"E 2653.02'
N. Black Cat Rd.



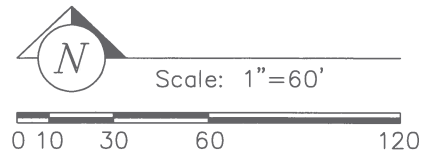
Point of Beginning

N38°27'39"E 1576.03'

N88°26'12"W 178.66'

N79°58'46"E 126.42'

S.9 S.10 W. Franklin Rd.
S.16 S.15



P:\Aviation Sub 21-296\dwg\Meridian Utilities Exhibit.dwg 2/21/2024 7:57:27 PM

IDAHO SURVEY GROUP, LLC
 9955 W. EMERALD ST.
 BOISE, IDAHO 83704
 (208) 846-8570

Exhibit B
City of Meridian Sewer and Water Easement
 Aviation Subdivision

A portion of the W1/2 of the SW1/4 of Section 10,
 T.3N., R.1W., B.M., City of Meridian, Ada County, Idaho

Job No. 21-296
Sheet No. 1 of 2
Dwg. Date 2/21/2024

Line Table		
Line	Bearing	Length
L1	N35°01'14"W	20.00'
L2	N54°58'46"E	22.69'
L3	N26°13'45"E	21.57'
L4	N00°37'17"E	30.79'
L5	N43°54'28"W	43.48'
L6	N00°36'35"E	25.00'
L7	S88°26'12"E	17.71'
L8	N01°33'48"E	41.00'
L9	S88°26'12"E	20.00'
L10	S01°33'48"W	41.00'
L11	S88°26'12"E	65.50'
L12	N01°33'48"E	41.00'
L13	S88°26'12"E	20.00'
L14	S01°33'48"W	41.00'
L15	S88°26'12"E	45.74'
L16	N06°35'03"E	41.16'
L17	S88°26'12"E	20.08'
L18	S06°35'03"W	42.04'
L19	N53°00'09"E	67.78'
L20	S88°26'12"E	32.09'
L21	S53°00'09"W	82.37'

Line Table		
Line	Bearing	Length
L22	S89°23'25"E	52.06'
L23	S00°36'35"W	20.00'
L24	N89°23'25"W	42.62'
L25	S00°37'17"W	15.84'
L26	S89°23'25"E	40.98'
L27	S00°36'35"W	20.00'
L28	N89°23'25"W	41.22'
L29	S54°52'58"E	50.98'
L30	S00°36'35"W	24.27'
L31	N54°52'58"W	60.12'
L32	S09°47'39"E	38.62'
L33	S81°27'40"W	20.00'
L34	N09°47'39"W	34.89'
L35	S82°31'42"W	19.71'
L36	S07°28'11"E	35.13'
L37	S80°12'21"W	20.02'
L38	N07°28'11"W	34.94'
L39	S82°43'20"W	35.93'
L40	S69°40'30"W	35.89'
L41	S54°58'46"W	18.25'

Curve Table					
Curve	Length	Radius	Delta	Chord Bearing	Chord Length
C1	19.40'	31.00'	35°51'18"	N18°32'56"E	19.08'
C2	1.92'	56.00'	1°57'44"	S77°17'58"E	1.92'
C3	16.61'	56.00'	16°59'54"	S44°33'03"E	16.55'
C4	13.58'	56.00'	13°53'41"	S06°19'33"E	13.55'
C5	5.65'	56.00'	5°46'54"	S08°41'18"W	5.65'
C6	27.11'	56.00'	27°44'24"	S46°34'05"W	26.85'
C7	1.21'	56.00'	1°14'16"	S81°54'34"W	1.21'



P:\Aviation Sub 21-296\dwg\Meridian Utilities Exhibit.dwg 2/21/2024 7:42:26 PM



IDAHO SURVEY GROUP, LLC
 9955 W. EMERALD ST.
 BOISE, IDAHO 83704
 (208) 846-8570

Exhibit B
City of Meridian Sewer and Water Easement
 Aviation Subdivision

A portion of the W1/2 of the SW1/4 of Section 10,
 T.3N., R.1W., B.M., City of Meridian, Ada County, Idaho

Job No. 21-296
Sheet No. 2 of 2
Dwg. Date 2/21/2024