

Meridian Community Center Design Update

June 17, 2025

Proposed Timeline

Summer-Fall 2024:

- Schematic Design
- Parks & Recreation Commission Meeting in October
- Council Check In October
- Public Outreach in December to Finalize Programming
- Continue to develop an Operational Cost Pro Forma

Winter 2024 – Spring 2025

- Design Development / Schematic Design
- Parks & Recreation Commission Meeting in February/March
- **Council Check In – Spring or Summer**

2025 Bid/Obligate Funds

- Council Check In – Present Construction Contract

2026 Construction

2027 Complete Construction

Community Center Open in FY28



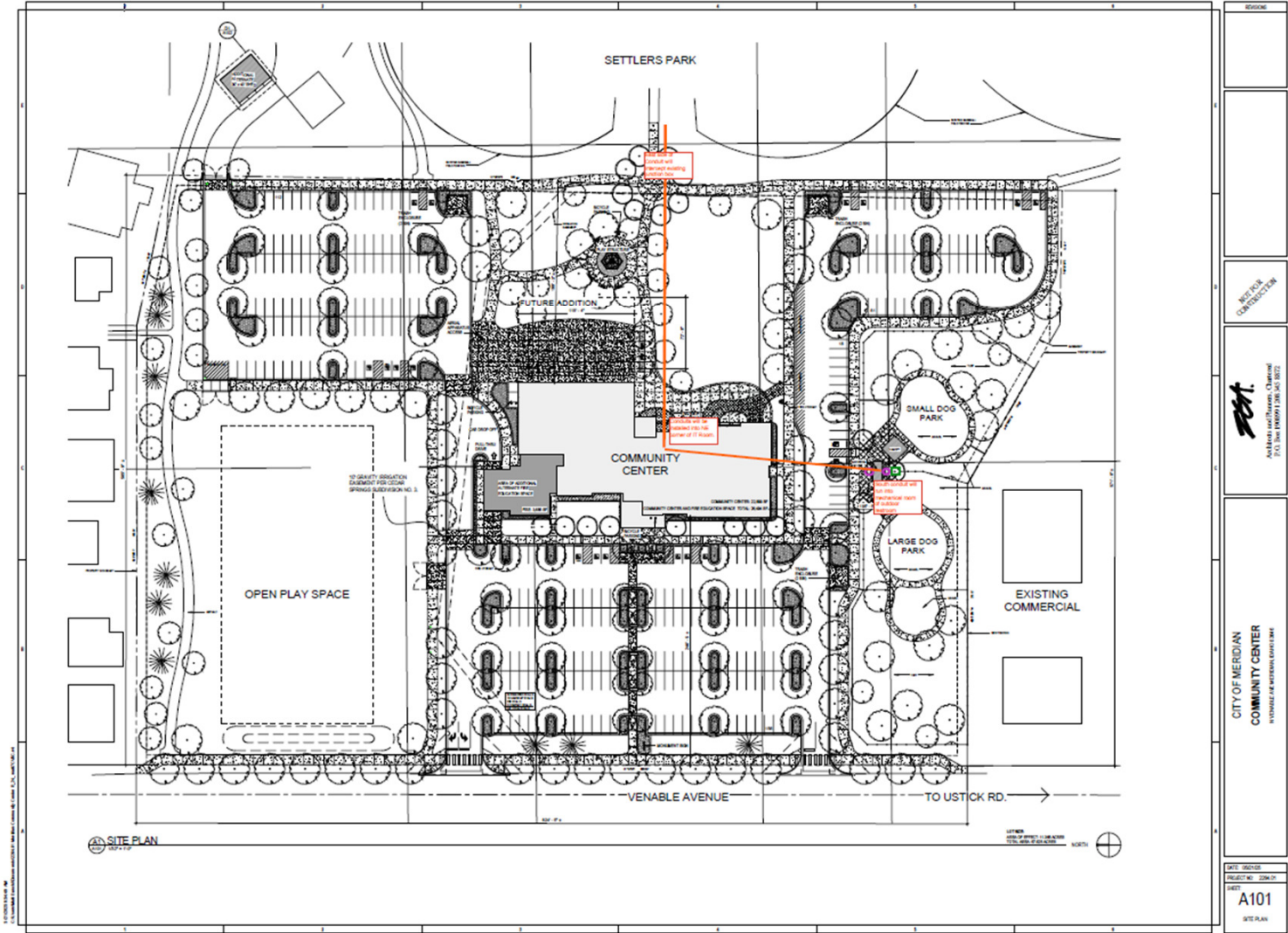
Where are we in the process?

- Design Development – High level of details are being reviewed such as exterior finishes, interior finishes, ceiling heights, storage cabinets, lighting, security cameras, access control, flooring in each specific room, public art locations, and more.

[illegible]

1 OVERALL FLOOR PLAN
A113 3/32" = 1'-0"

Fiber Connection



Building Elevations



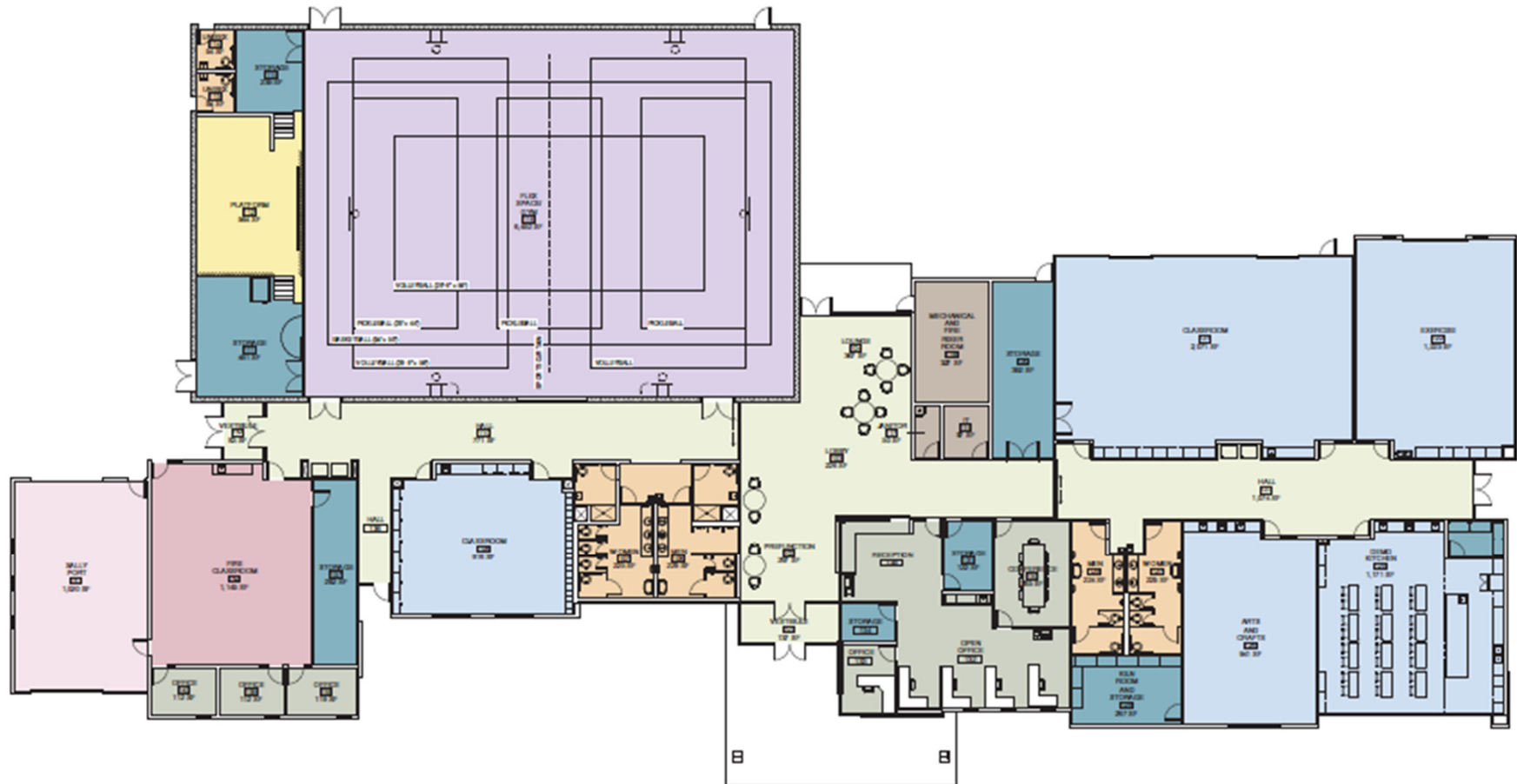
Site Plan

Park Site Design Key Features

- 347 parking spaces
- Large and Small Dog Park
- Open Play Green Space
- Community Center
- Basketball Courts
- Unique Play Structure
- Pathway expansion



Floor Plan



- **Potential Public Art Locations**

- Working with Stephanie Inman and Cassandra Schiffler to explore possible public art locations and way finding in the Community Center and park expansion.
- Public Art theming will celebrate agriculture, irrigation, and the history of settlers in Meridian.
- Balance high impact artwork with cost effective elements.
- Arts Commission and Staff prioritized art elements include;
 - Welcome entry piece
 - Lobby installation
 - History Wall
 - Hallway interchangeable displays
 - Wall Dioramas





Questions? Feedback?