



COMMUNITY CENTER

Art Opportunities Review

Theme

Celebrating Agriculture & Irrigation

This theme honors the ingenuity of early settlers who made life in Meridian possible by bringing water to an arid landscape. Selected future artists are invited to explore ideas around adaptation, perseverance, and what has since flourished—through possible imagery related to agriculture, native plants, insects, wildlife, historical photos / references, and irrigation systems.

Strategy

Collaborate with architects and Meridian staff to integrate artwork into construction, with a vision for both immediate and future phased installations.

Identify and engage local artists for specific projects. Ask artists to create high-quality, artworks that respond to the theme, prioritize durability, and plan for long term maintenance.

Budget & Materials

Total art budget: \$100,000 (1% of construction costs).

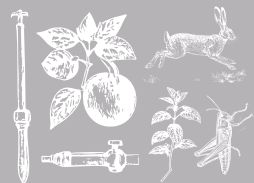
Some projects will be completed during construction; others will roll out in future phases.

Consider using materials like irrigation pipes, sprinklers, and repurposed farm equipment.

PREPARED BY

*Stephanie
Inman*

This Art Review exists to enhance the Community Center user experience with art that is **unique** to Meridian that **builds and strengthens** community.



WHY DO WE NEED ART?

Public art and art installations are vital tools for connection, education, and cultural preservation. They help visitors feel rooted in this place while celebrating the unique character and history of the Meridian.

ART REVIEW GOALS:

- Encourage a friendly and inviting environment that adds to the community spirit of Meridian.
- Balance high-profile artworks with creative, cost-effective installations.
- Ensure community voices are represented and involved in the process and provide access to art for all.
- Add to the sense of place that encourages people to linger, gather, and learn more about our area.
- Celebrate the unique identity, history, and landscape of Meridian, specifically historical references to early settlers.
- Use materials and funding wisely, with long-term sustainability in mind.
- Reinforce wayfinding in and outside the community center.
- Present thoughtfully planned options that, when coordinated early with construction, reduce costs and maximize impact.

Public Art

Public Art describes artworks placed in public spaces and locations frequented on a daily basis. It can take on a wide range of forms, including sculpture, mural, integrated architectural or landscape work, community art, digital media, and even performances or festivals. Size, scale, and permanence can vary.

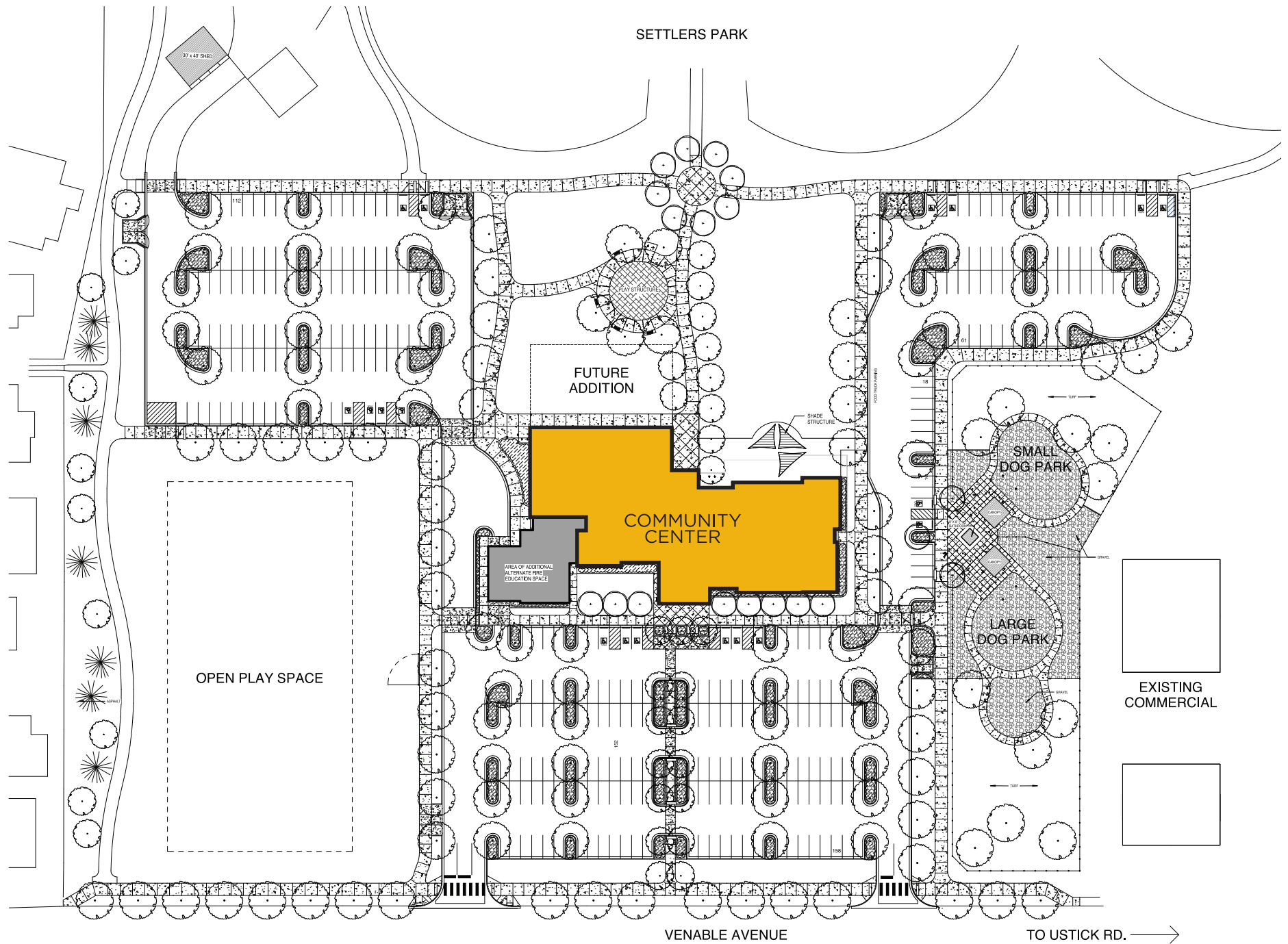
This plan encourages art created in collaboration with the community, reflecting the cultures and values of those it is created for.

Public Art Goals

Encourage Interaction: Sculptures, murals, and interactive installations invite curiosity and conversation. Visitors of all ages can connect through shared experiences with the art, making the community center feel more alive and inclusive.

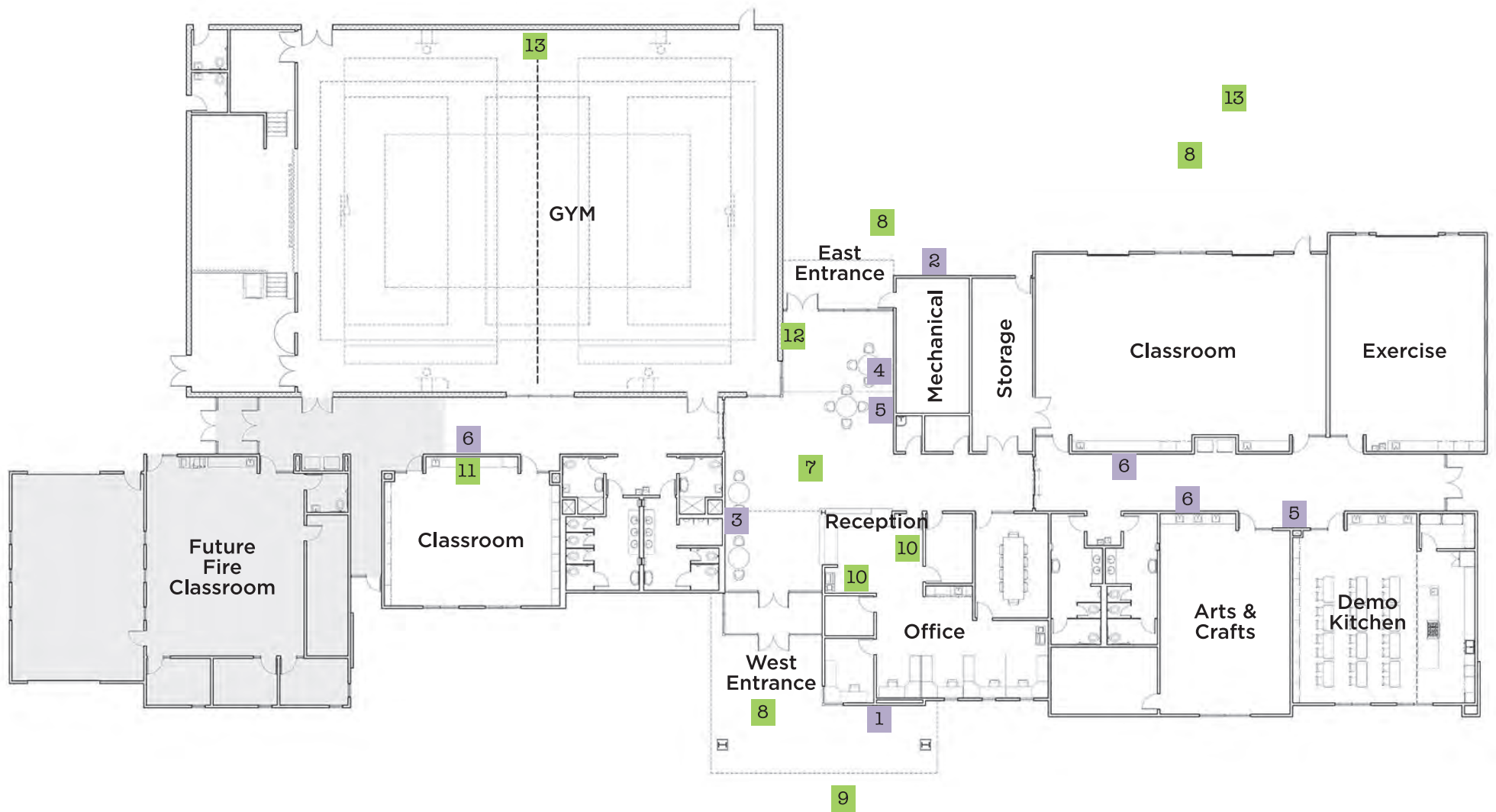
Foster Community Identity: When local artists are involved, public art becomes a reflection of the community itself. It fosters pride and a deeper connection among residents, reinforcing that the center is a space for and by the people who live there.

Preserve Local Stories: From Indigenous cultures to pioneers, agricultural roots, mining heritage, and immigration, public art can preserve and visually share these stories for current and future generations. Murals or installations can help residents and visitors learn in an accessible and engaging way—often more memorably than reading a plaque or textbook. Art that blends historical themes with contemporary styles can help bridge generations. It can show how the community has evolved while still honoring the foundation it was built upon.



SITE PLAN

MERIDIAN COMMUNITY CENTER



FLOOR PLAN

MERIDIAN COMMUNITY CENTER

- Phase 1 Projects (*Installed before opening*)
- Phase 2 Potential Projects (*as budget and time allows*)

Potential Projects

Ideas for bringing art into the Meridian Community Center at Settler's Park

1

Welcome Mural West

BUDGET: \$8,000-\$12,000



West Entrance Mural triptych features (3) 3' x 16' insets themed past, present, and future.

Future: Replace with porcelain enamel tiles.



3

Lobby Wall

BUDGET: \$13,000-\$25,000

Dimensional Wall Installation

A stylized procession of imagery including jackrabbits, sagebrush, irrigation maps, and roots possibly crafted in layered sign materials for a dimensional effect to tell the story of our arid landscape.



2

Welcome Mural East

BUDGET: \$8,000-\$12,000

East Entrance mural (11' x 18') is an opportunity to hire an emerging artist.

Future: Replace with porcelain enamel tiles.



4

History Wall

BUDGET: \$15,000-\$30,000
(including TAG Consulting: \$1,500)

Historic Photo Collage Mural

Full-wall wrap mural featuring a curated collage of historic photos. Collaborate with TAG for image selection and narrative. Include an interpretive panel to provide context and storytelling.

Strategy: Direct hire digital collage artist or graphic designer



* = Possible community collaboration project

~ = Future phased art opportunity

⚒ = Integrated with construction

Potential Projects

Ideas for bringing art into the Meridian Community Center at Settler's Park

5

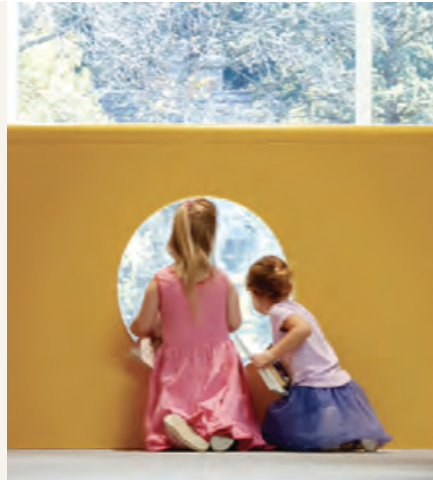
Wall Dioramas

BUDGET: \$4,000-\$7,000

Whimsical scenes to captivate kids.

Built-in, lit, dimensional dioramas housed in custom cubbies integrated into the construction. One located on the history wall, another in arts/crafts classroom hallway.

Strategy: Direct hire (Steph).



7

Ceiling Art

BUDGET: \$7,000-\$15,000

Grasshopper Mobile Installation

A horizontal cluster of green grasshoppers, suspended as a mobile to complement the building's color palette while providing sound-dampening benefits.

Individual grasshoppers could appear in other areas throughout the building, creating a playful visual thread.



6

Art / Poem Hallway Gallery

BUDGET: \$3,000-\$6,000

For 2-3 hallways

Plexiglass (2 layer) gallery wall with stand-offs. Can use changeable art at different heights / wheelchair height. Inexpensive option to showcase the work of the community and classes.

Strategy: Direct hire signmaker.



8

Stainless Steel Inlays

BUDGET: \$3,500

(10 at \$50 each + artist fee)

Concept: Oak leaves
Can be an image adapted from the exterior mural.

Strategy: Use the same mural artist / aesthetic for the leaf design.



* = Possible community collaboration project

~ = Future phased art opportunity

⌒ = Integrated with construction

Potential Projects

Ideas for bringing art into the Meridian Community Center at Settler's Park

9

Welcome Entry Sculpture

BUDGET: \$40,000-80,000

Coordinate with the entry mural and any exterior art installations, and Settler's Park themes, to create a welcoming exterior sculpture.



11

Classroom Mural

BUDGET: \$7,000-\$14,000



Large-scale community coloring page on wall:

A local artist creates a black and white coloring book page that is colored by the community, and then reproduced and installed.

Alternate: painted mural.



10

Reception Wall Art

BUDGET: \$4,000-\$12,000

Acquire two pieces from Meridian artists recommended by MAC / Cassandra



Alternate idea: custom glass wall art, or sculpture in a 4' x 4' lighted niche.

Strategy: Commission a piece or purchase one already-completed.



12

Tactile Wall

BUDGET: \$13,000-\$25,000

Interactive Grasshopper Wall Installation

A large, wall-mounted grasshopper made from reclaimed agricultural materials—sprinkler heads, tractor parts, felt, artificial turf, and more. This hands-on piece invites kids to touch and explore the textures, sparking curiosity about farming and sustainability. Designed to be touchable but not climbable. An integrated sound element would also be fun.



* = Possible community collaboration project

~ = Future / phased art opportunity

— = Integrated with construction

Potential Projects

Ideas for bringing art into the Meridian Community Center at Settler's Park

13

Functional Artist-designed permanent fixtures

BUDGET: \$25,000-\$125,000

Opportunities indoors and outdoors for artist-designed custom benches, chairs, bike racks, water fountains, light fixtures, etc.



Artwork shown: Repurposed propane Tank Bench by Colin Selig , Thomas Dambo Troll, rag rug material (inspired by Lila Hill), Desert Tracery by Norie Sato, Scottsdale AZ, Ribbon Candy by Paul Vexler, Beaverton, OR

* = Possible community collaboration project
~ = Future / phased art opportunity
— = Integrated with construction