



PARKS AND RECREATION COMMISSION

MEETING – MINUTES

City Council Chambers, 33 East Broadway Avenue, Meridian, Idaho
Wednesday, March 11, 2026, at 4:00 PM

The Meridian Parks & Recreation Commission is a volunteer citizens' group that is created and empowered to advise the City on issues relating to park facilities and recreation programs of the City. Their mission is to gather input from staff and other qualified personnel on issues relating to the creation and design of public parks and open spaces; to listen to public input; and to provide advice and recommendations on parks and recreation related matters to the Mayor and City Council.

ROLL-CALL ATTENDANCE – Start Time: 4:08PM

 Jo Greer, Vice Chair

 Helen Muscolo

 Jennifer Bobo

 Carrie Graeff

 Mandi Roberts

 Jared Christensen

 Terry Dennington

 Toren Taylor

 Alan Helms

Others present were: MPR Department staff—Parks and Recreation Director Steve Siddoway, Marketing Coordinator Shelly Houston, Pathways Project Manager Kim Warren, Administrative Assistant II Rachel Myers, Lakeview Golf Course General Manager Ryan Roberts, Deputy City Attorney Emily Kane, Boise Pathways Program Manager Nina Schaeffer and Meg McCarthy.

ADOPTION OF THE AGENDA

Vice Chair Jo Greer asked for a motion to adopt the evening's agenda. Commissioner Alan Helms moved to adopt the agenda. Commissioner Terry Dennington seconded. All were in favor of the motion.

APPROVAL OF THE MINUTES

1. February 11, 2026 Regular Meeting

*Vice Chair, Jo Greer asked for a motion to adopt the minutes as presented.
Commissioner Alan Helms moved to adopt the minutes. Terry Dennington seconded.
All were in favor of the motion.*

ANNOUNCEMENTS

2. Welcome New MPR Commissioner Carrie Graeff

Commissioner Carrie Graeff introduced herself to the Commission Board. She is originally from Idaho and has children who are heavily involved in activities hosted through the Parks and Recreation program. She was a lifeguard for many years and also worked in marketing and public relations for golf courses.

3. Welcome New MPR Commissioner Jared Christensen

Commissioner Jared Christensen introduced himself to the Commission Board. He participated in Leadership Meridian and was drawn to becoming involved in local government. He is currently the principal at Willow Creek Elementary. With four children and daily experience in a school setting, he is able to provide a unique perspective with children in mind.

4. Spring Pathways Tour 4/8/26

Meridian Parks and Recreation Director Steve Siddoway stated that staff plans to hold the Pathways Tour in April, a regular meeting in May, and a team-building activity in June. These events may be adjusted depending on weather conditions. The plan is to meet at Owyhee High School and ride continuously to where the trail ends near Pine.

5. Upcoming Events

Meridian Parks and Recreation Marketing Coordinator, Shelly Houston, provided an update on the City's upcoming events.

- A. Explore Outdoors: Bicycle Bonanza – May 16th
- B. Kleiner Park Live – June 5th – Every other Friday for 6 weeks
- C. Meridian's Main Street Mix – Jul 8th – Every Wednesday for 6 weeks
- D. Summer Activity Guide – March 18th

The floor was opened for questions. No further questions were raised by the Commissioners.

NEW BUSINESS

6. Special MPRC Leadership Elections

A special election was held due to Commission Chair Dom Gelsomino stepping down.

The floor was opened for nominations for Commission Chair. Commissioner Mandi Roberts motioned to nominate Vice Chair Jo Greer as Commission Chair.

Commissioner Alan Helms seconded the nomination. No other nominations were made, and nominations for Commission Chair were closed.

Vice Chair Jo Greer then nominated Commissioner Jennifer Bobo for Vice Chair. No other nominations were made, and nominations for Vice Chair were closed.

Vice Chair Jo Greer called for a motion to elect Jo Greer as Chair and Jennifer Bobo as Vice Chair. Commissioner Mandi Roberts motioned to elect Jo Greer as Chair and Jennifer Bobo as Vice Chair. Commissioner Alan Helms seconded. All were in favor of the motion.

7. MPR Lakeview Golf Course Branding & Signage

Lakeview Golf Course General Manager, Ryan Roberts, presented a PowerPoint providing an update on the course's brand identity. After several meetings with Trademark Creative Studio, the course has selected a logo. The design balances vintage charm with modern energy while reflecting Meridian's traditional colors. For monogram elements, an "LV" may be used to maintain freshness within the branding system. Utilizing the proposed color system, flags could be colored gold, off-white, or blue to represent pin locations on each green.

The floor was opened for questions.

1. Commissioner Torren Taylor asked whether the monogram would be used on merchandise or if the main logo would be used.

Ryan responded that the project is still in the early stages and no merchandise has been produced yet; however, they plan to utilize both logos as part of the rebranding.

2. Commissioner Terry Dennington asked whether the budget has been reviewed and if there is a total cost for rebranding the golf carts.

Ryan stated that it is more cost-effective to purchase golf cart stickers and apply the logos in-house.

Commissioner Mandi Roberts stated that she prefers this version of the logo over the all-white option, noting that it is more readable and that the colors stand out.

No further questions were raised by the Commissioners.

8. City of Boise Pathways & Open Spaces Update

Boise Pathways Program Manager, Nina Schaeffer, provided a PowerPoint update on the planned pathway connections between Meridian and Boise. The Boise Pathway Master Plan was adopted into Blueprint Boise, the City's Comprehensive Plan, in February 2022. The plan proposes 112 miles of new pathway projects across the city, in addition to more than 50 miles of existing pathways.

Recent Projects

- Goddard Linear Park (Complete)
- Grove Street Extension (Complete)
- Cassia Street Connection (Complete)
- Tuttle Lateral (In construction)
- Garden Street to Cassia Park Connection (Pre-construction)
- Broadway to Federal Way Connection (Design)
- Spoils Bank Canal (Design)

Planned Pathway Connection to Meridian

- Zinger Lateral pathway
- North Slough
- Milk Lateral
- Rail with Trail
- Ridenbaugh Canal
- Southwest Ada County

Nina expressed a desire to collaborate on the development of future pathways and trails. Partnering not only with Meridian, but also with neighboring cities, will help ensure that residents of the Treasure Valley have safe, accessible pathways that connect them to key destinations.

The floor was opened for questions.

1. Commissioner Alan Helms asked if Boise is also experiencing issues with e-bikes.

Nina stated that, through their partnership with Lime, they have been able to evaluate future pathway needs, including whether to prohibit e-bikes in certain areas or widen paths in others.

2. Commissioner Terry Dennington asked if the planned pathway connection projects have already begun.

Nina responded that the projects are not currently under construction; they are proposed pathway connections identified for future partnerships.

No further questions were raised by the Commissioners.

Boise Senior Planner of Land Use and Transportation, Meg McCarthy, presented a PowerPoint providing a land use and transportation update. She is also acting as the City's liaison for ACHD and serves as the main point of contact with Lime

Recently Completed Projects

- McMillian/Ustick Bikeway
- Grenadier/Ustick PHB (to be completed by end of year)

Requested Projects

Roads & Intersections

- 19 Requests
- Large Capital Projects
- Often impact fee eligible
- Five Mile Overpass (2030)
- Lake Hazel Extension – Eagle to Cloverdale (2029), Cloverdale to Five Mile (2030)
- Amity, Cloverdale to Five Mile (AOI)
- Maple Grove, Victory to Amity (AOI)
- Cloverdale, Overland to Victory (2029)

Safety & Compliance

- 74 Requests
- Crossings, bike/ped facilities, safe routes to school etc.
- Northview-Ustick Bikeway, Shamrock to Milwaukee
- Hollandale-Targee, K-Bar-T Bikeway
- Mitchell, Amity to Victory (AOI)
- Cloverdale-Five Mile Bikeway, Columbia to Camas (AOI)
- Emerald/Executive, Latah to Pine
- McMillian Rd, Zinger Lateral to Mitchell

Future Comprehensive Plan

Meg shared that the City is working on expanding pathways in areas including Southwest Boise, Ten Mile Creek, South Airport, Third Bench, and East Columbia, with the goal of creating a new interconnected trail system. City Council has referred to this concept as the “Sage Belt.”

The floor was opened for questions.

1. Commission Chair Jo Greer asked whether planning efforts are based on city boundaries or the area of impact.

Meg responded that planning is done for the area of impact; however, projects within city boundaries are prioritized.

Meg also provided an update regarding e-bikes. The City of Boise is currently working with Saint Alphonsus, St. Luke's, and Ada County Parks and Waterways on an education and encouragement campaign focused on the frequency and severity of micro-mobility injuries. The goal is to increase awareness of the risks, particularly for children.

No further questions were raised by the Commissioners.

9. MPR Sports & External Events Update

Meridian Parks and Recreation Coordinator Skyler Cook's update will be postponed to a later date.

10. MPR Non-Resident Fees Update

Meridian Recreation Superintendent Garrett White's update will be postponed to a later date.

11. MPR Pathways Master Plan Update

Meridian Pathways Project Manager Kim Warren presented a PowerPoint providing an update on the Pathways Master Plan.

Where We've Been

- The original Pathways Plan was completed in 2010
- The population in 2010 was approximately 75,000 and is now over 139,000
- Pathway mileage in 2010 was 12 miles and has grown to 82 miles; however, only 17 of those miles are maintained by the City of Meridian
- The longest continuous pathway runs over 8 miles

Where Are We Going

The action plan is oriented towards four primary goals for a pathway system that:

- Connects all neighborhoods to key destinations and activity centers, including revisions to the "Core Loop" pathway route and the Linder Road (Eagle Island) routes
- Strengthens and expands partnerships, including ACHD, COMPASS, Nampa and Meridian Irrigation District, Idaho Transportation Department, and neighboring municipalities

- Contributes to a sense of community, as an active system attracts new users and increases support for pathways
- Builds awareness of pathways as public amenities through wayfinding elements, navigational signage, and gateway monuments

Community Outreach

As part of the Pathways Plan update, survey participants were asked to rank categories of pathway improvements based on importance:

1. Safer Street Crossings
2. Connecting More Places
3. Better Wayfinding
4. Pathway Etiquette
5. Building New Pathways
6. Goathead Mitigation
7. Awareness of Pathway Locations
8. Trip Planning Resources
9. Sharing Pathways with Others

The floor was opened for questions.

1. Commissioner Mandi Roberts suggested creating a connection within the “Core Loop” that includes access to downtown Meridian and The Village. She also agreed that the “Core Loop” should be renamed.

Kim responded that she agrees these connections are important. Renaming the “Core Loop” could be an opportunity to engage the community and select a name that feels like a good fit.

2. Commission Chair Jo Greer asked whether subdivisions could include wayfinding elements or signage to help prevent people from getting lost.

Kim responded that this is something she will look into. While it may not be feasible for every neighborhood at this time, it could be a possibility in select areas.

3. Commissioner Alan Helms asked whether the total acreage of Meridian is known and if the City plans to annex additional property.

Parks and Recreation Department Director Steve Siddoway responded that the City’s area of impact has been established, but only about half of that area has been annexed, leaving room for future growth and expansion.

4. Commissioner Terry Dennington asked how many miles the “Core Loop” covers and requested clarification on the map presented, specifically noting that dotted lines represent incomplete pathways while solid lines represent completed pathways. She also suggested the possibility of creating two smaller loops instead of one large loop.

Kim responded that she did not have the exact mileage of the loop available but confirmed that the dotted lines represent incomplete pathways. She agreed that increasing connection points would improve accessibility and usability by allowing more entry points to the system.

No further questions were raised by the Commissioners.

OLD BUSINESS ~ None

WORKSHOP ~ None

STAFF REPORTS

12. MPR Staff

Parks and Recreation Director Steve Siddoway reported on the following:

1. Community Center groundbreaking
2. Softball enrollment deadline – March 10th
3. Meridian water tower is now eligible for historic register status
4. America 250 celebration fireworks budget was amended with a \$40,000 budget increase
5. Homecourt got approval to sell marketing signage spots and sponsorships
6. Lakeview Golf Course pond re-grading was finished, the front loop will get re-graded this year as well
7. Non-resident and resident fees for shelter/field reservations
8. Working on the budget for FY2027
9. Parks Superintendent Mike Barton is retiring on March 20th

The floor was opened for questions.

1. Commission Chair Jo Greer asked how disc golf courses are established.

Steve responded that due to park space we have 2 temporary disc golf courses that are put up in the summer and one permanent disc golf course. We have plans to put up another disc golf course at Margaret Aldape Park when it is developed.

No further questions were raised by the Commissioners.

Pathways Project Manager Kim Warren reported on the following:

1. Pre-construction meeting at Fivemile Creek Trail hub on Ten Mile Road for the bathroom that is being installed.

The floor was opened for questions. No further questions were raised by the Commissioners.

NEXT MEETING ~ Wednesday, April 8, 2026, at 4 PM

ADJOURNMENT

Commission Chair Jo Greer called for a motion to adjourn the meeting. Commissioner Alan Helms moved to adjourn. Commissioner Mandi Roberts seconded. All were in favor of the motion.

There being no further business, the meeting adjourned at approximately 6:09 pm.

2026 All-Commission Goals:

1. Support construction of the new Community Center and the expansion of Settlers Park.
2. Complete the Pathways Master Plan Update.
3. Support development of a connected pathway system across the City of Meridian, with a focus on user experience amenities and improved connectivity. Meet with the rest of our neighboring cities to coordinate continuous pathway planning beyond our boundary.
4. Add a new playground to Tammy Street Park and give the park an official new name as a City park.
5. Participate in the partnership with the Meridian Arts Commission to add theming and identity reinforcing art in Meridian parks and along pathways. Focus this year on completion of the Public Art Master Plan and art for the new Community Center.
6. Continue to provide feedback for ongoing park improvements and enhancements.
7. Support future improvements at Lakeview Golf Course, including new signage for the course, fencing, and improvements to the irrigation pond area.
8. Engage other task forces, commissions, entities, and agencies through workshops and other outreach for partnership opportunities.
9. Support ongoing operations of the Meridian Pool.
10. Pursue improved communication tools and opportunities to engage the community and diverse interests.



TRADEMARK CREATIVE STUDIO

LAKEVIEW GOLF COURSE

BRAND IDENTITY

LAKEVIEW LOGO

The new Lakeview logo strikes a balance between vintage charm and modern energy. Traditional typography, bold colors, and a nostalgic graphic nod to golf's mid-century past while still feeling fresh and current.

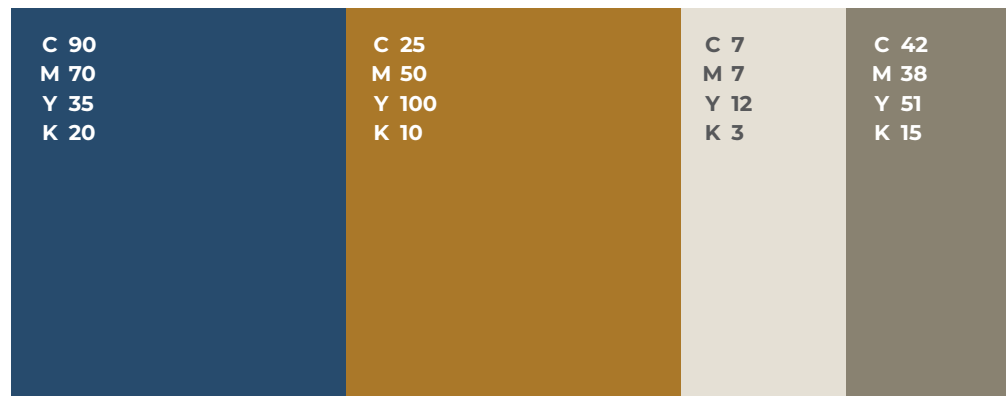
This approach positions Lakeview as fun, confident, and full of personality—honoring tradition without feeling stuck in it.



Lakeview
GOLF COURSE

BRANDED COLORS

The proposed color scheme reflects Lakeview's status as a facility of Meridian's Parks and Recreation department by referencing the city's branded color system. But, by using more mature, muted variations on Meridian's existing system, the color scheme captures the history and traditions of the game of golf, itself.



COLORWAYS

The complete logo can be used in a single-color treatment, whether darker colors on a lighter background or vice versa. Additionally, each element—flag, Lakeview, and golf course—can be colored separately to make an exciting statement. Colorway options will be determined by usage and readability.



Lakeview
GOLF COURSE



Lakeview
GOLF COURSE



Lakeview
GOLF COURSE



Lakeview
GOLF COURSE

MONOGRAM ELEMENTS

In certain instances, an “LV” monogram can be used to maintain freshness in the branding system, and work within space constraints. The proposed monogram reflects the primary “Lakeview” font in an elegant, rhythmic, cohesive form.

The monogram can also be paired with the graphic flag element from the logo for yet another look.

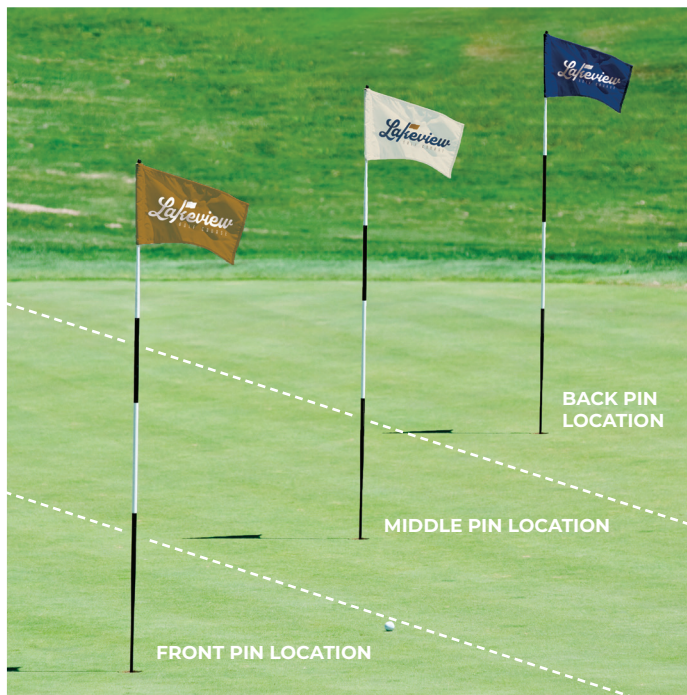


BRANDED ITEMS

The new Lakeview Golf Course logo and monogram look great in a variety of situations, whether on branded apparel, on golf balls, divot repair tools, coasters at the bar, stickers, or on the flagsticks throughout the golf course.

Utilizing the proposed color system, flags could be colored gold, off-white, or blue to represent pin location on each green.

Members and visitors alike will proudly embrace the traditional, yet revitalized logo and colors of this new branding system—a system which will set it apart from every other golf course in the Treasure Valley.



CITY *of* BOISE

TRANSPORTATION UPDATE

CREATING A CITY FOR **EVERYONE**

AGENDA

- **Pathways Program Update – Nina Schaeffer**
 - What we've done
 - What's ahead
 - Future pathways into Meridian
- **Land Use and Transportation Update – Meg McCarthy**
 - Recently completed projects
 - FYP Priorities and AOI coordination
 - Lake Hazel Extension + South Boise Planning
- **Questions / Discussion**



BOISE PATHWAY MASTER PLAN

- Adopted into *Blueprint Boise*, the City's Comprehensive Plan in February 2022
- Proposes 112 miles of new pathway projects across the city in addition to the ±50 miles of existing pathways, totalling 160 miles of pathways
- Significantly expands transportation options connecting people to jobs, schools, community destinations, and nature
- Supports City's priorities around mobility, climate, equity, safety and health

OUR VISION

The Boise Pathway Plan will create a **connected, safe, and accessible pathway network** that expands beyond the Greenbelt to link neighborhoods, schools, parks, and key destinations.

*Make Useful
Connections*



*Promote Equity,
Access, and Choice*



*Enable Active
Lifestyles*

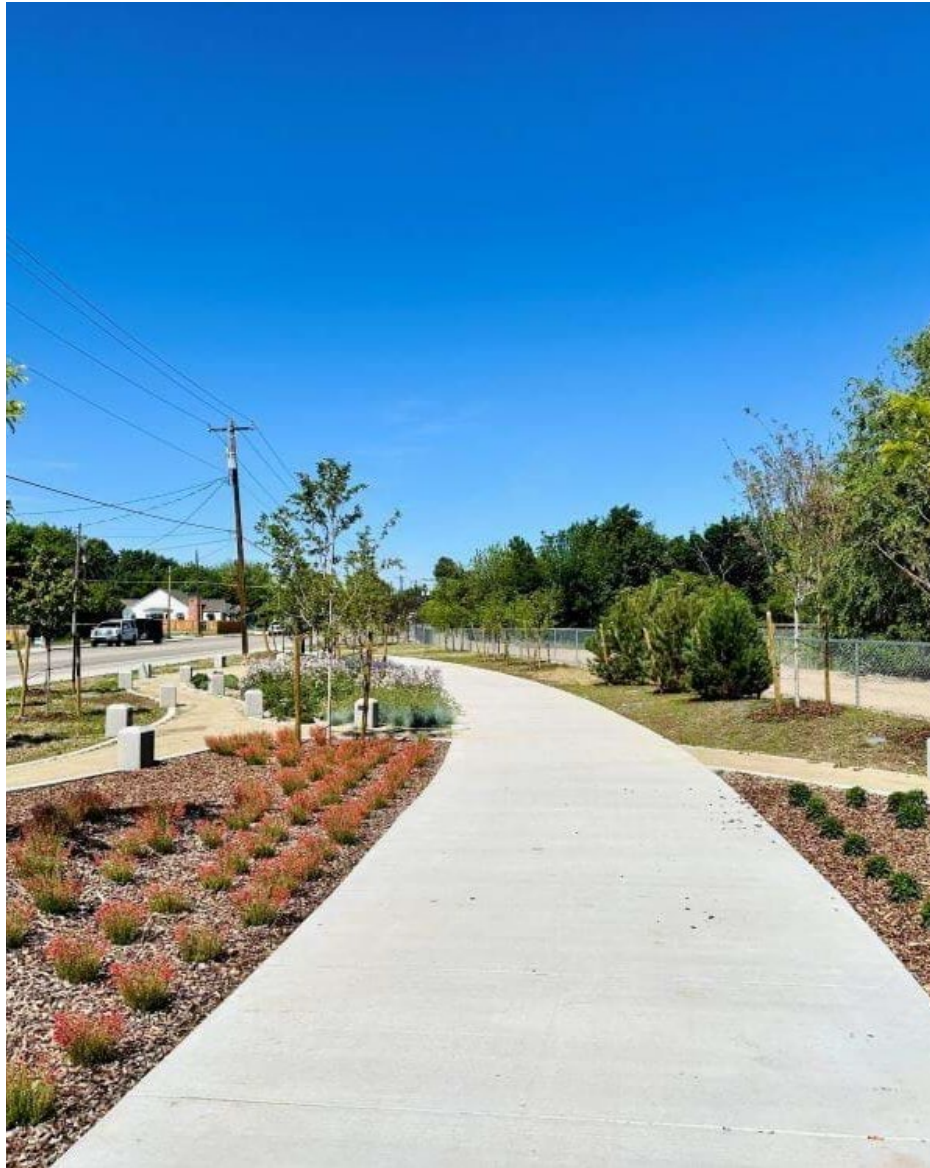


*Increase Economic
Vitality*



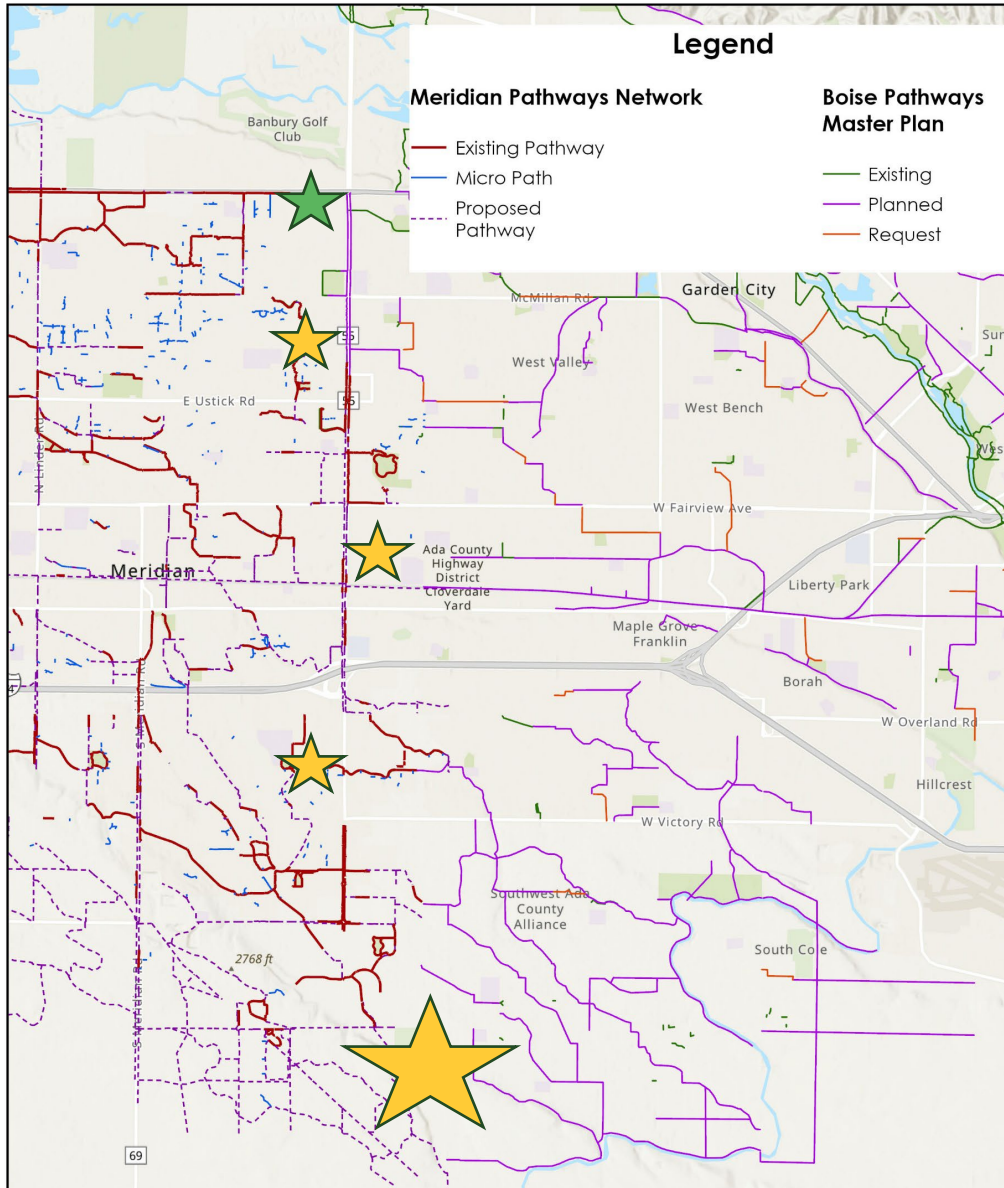
*Reduce Environmental
Impacts*





RECENT PROJECTS

- Goddard Linear Park (*complete*)
- Grove Street Extension (*complete*)
- Cassia Street Connection (*complete*)
- Tuttle Lateral (*in construction*)
- Garden St. to Cassia Park Connection (*pre-construction*)
- Broadway to Federal Way Connection (*design*)
- Spoils Bank Canal (*design*)



PLANNED PATHWAY CONNECTIONS

- Zinger Lateral Pathway
- North Slough
- Milk Lateral
- Rail with Trail
- Ridenbaugh Canal
- Southwest Ada County

MERIDIAN & BOISE PATHWAY PARTNERSHIP

Today

- Working together on development applications
- Support in vision for Rail with Trail
- Relationship building with canal companies

In the future

- Partnership on a cross-jurisdiction pathway
- Building a Treasure Valley coalition supporting our collective pathway network



Questions?

CITY *of* BOISE

An aerial photograph of Boise, Idaho, showing the city's urban landscape and surrounding mountains. The image is overlaid with a semi-transparent blue filter. The city buildings are visible in the foreground, and the mountains rise in the background.

LAND USE AND TRANSPORTATION UPDATE

RECENTLY COMPLETED PROJECTS

- McMillian/Ustick Bikeway – Crosses Eagle at Wainwright, connects to pathway that runs N/S between Eagle and Locust Grove
- Grenadier/Ustick PHB (to be completed by end of year)

REQUESTED PROJECTS

Roads & Intersections

- 19 requests
- Large capital projects
- Often impact fee eligible

Safety & Compliance

- 74 requests
- Crossings, bike/ped facilities, safe routes to school etc.

ROADS AND INTERSECTIONS

- Five Mile Overpass #3
Construction 2030
- Lake Hazel Extension
#7
- Amity, Cloverdale to
Five Mile #9 (AOI)
- Maple Grove, Victory
to Amity #10 (AOI)
- Cloverdale, Overland
to Victory #19
Construction 2029



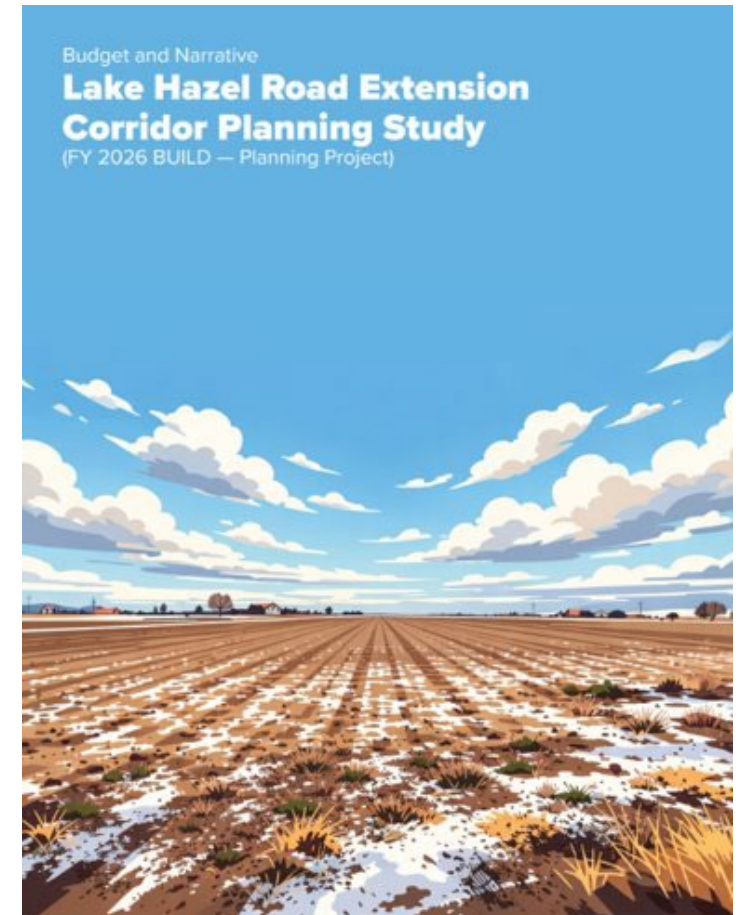
SAFETY AND COMPLIANCE

- Northview-Ustick Bikeway, Shamrock to Milwaukee #4
- Hollandale-Targee, K-Bar-T Bikeway #17
- Mitchell, Amity to Victory #26 (AOI)
- Cloverdale-Five Mile Bikeway, Columbia to Camas #36 (AOI)
- Emerald/Executive, Latah to Pine #47
- McMillian Rd, Zinger Lateral to Mitchell #63



LAKE HAZEL EXTENSION AND PLANNING

- Eagle to Cloverdale, construction 2029, Cloverdale to Five Mile construction 2030
- BUILD Grant submitted 2026
 - 95% Design
- Future comprehensive planning study: Southwest, 10 Mile Creek, South Airport, Third Bench, East Columbia
- Potential for new interconnected trail system - "Sage Belt"





Questions?



Meridian Pathways Master Plan Update

Kim Warren, Pathways Project Manager

11 March 2026

Pathways Master Plan Update – Structure and Overview

CHAPTER 1 WHERE WE'VE BEEN



CHAPTER 2 WHERE WE'RE GOING



WHERE WE'RE GOING

- The Next Ten Years
- Goals for the system
- Wayfinding Elements & Guidelines
- Priority Projects
- Action Items

PLACEMAKING TOOL KIT (Appendix)

- Ideas for enhancing the identity, brand, and human experience of the system



CHAPTER 1

Where We've Been - A growth story

- Original Pathways Plan completed in 2010
- Identified many goals for the system, but mainly helped define routes to be developed
- Primarily along irrigation waterways



2010

Population

~75,000

2026

139,000+ people

Pathway
Mileage

12

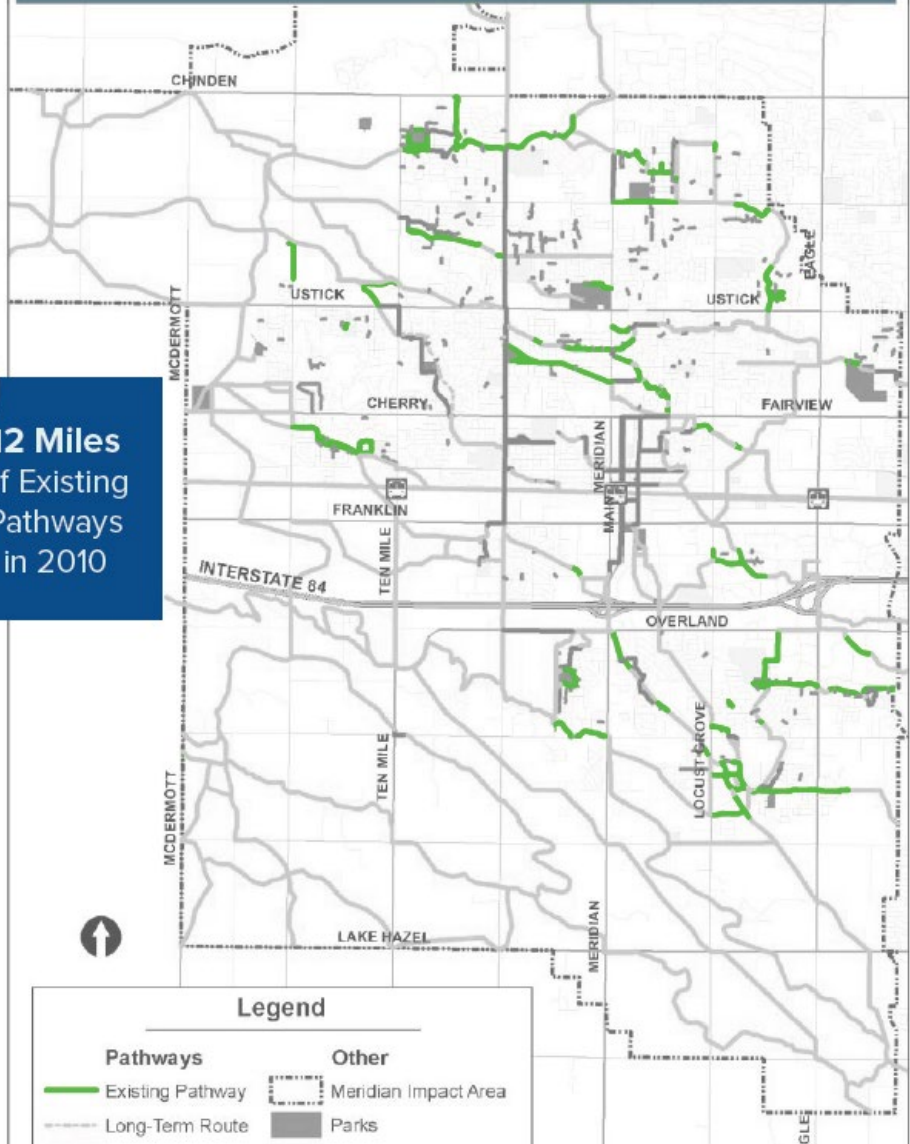
82 miles *

- * Only 17 miles are maintained by City of Meridian
- * Includes detached 10' sidewalks through residential subdivisions

2010

Progress Comparison

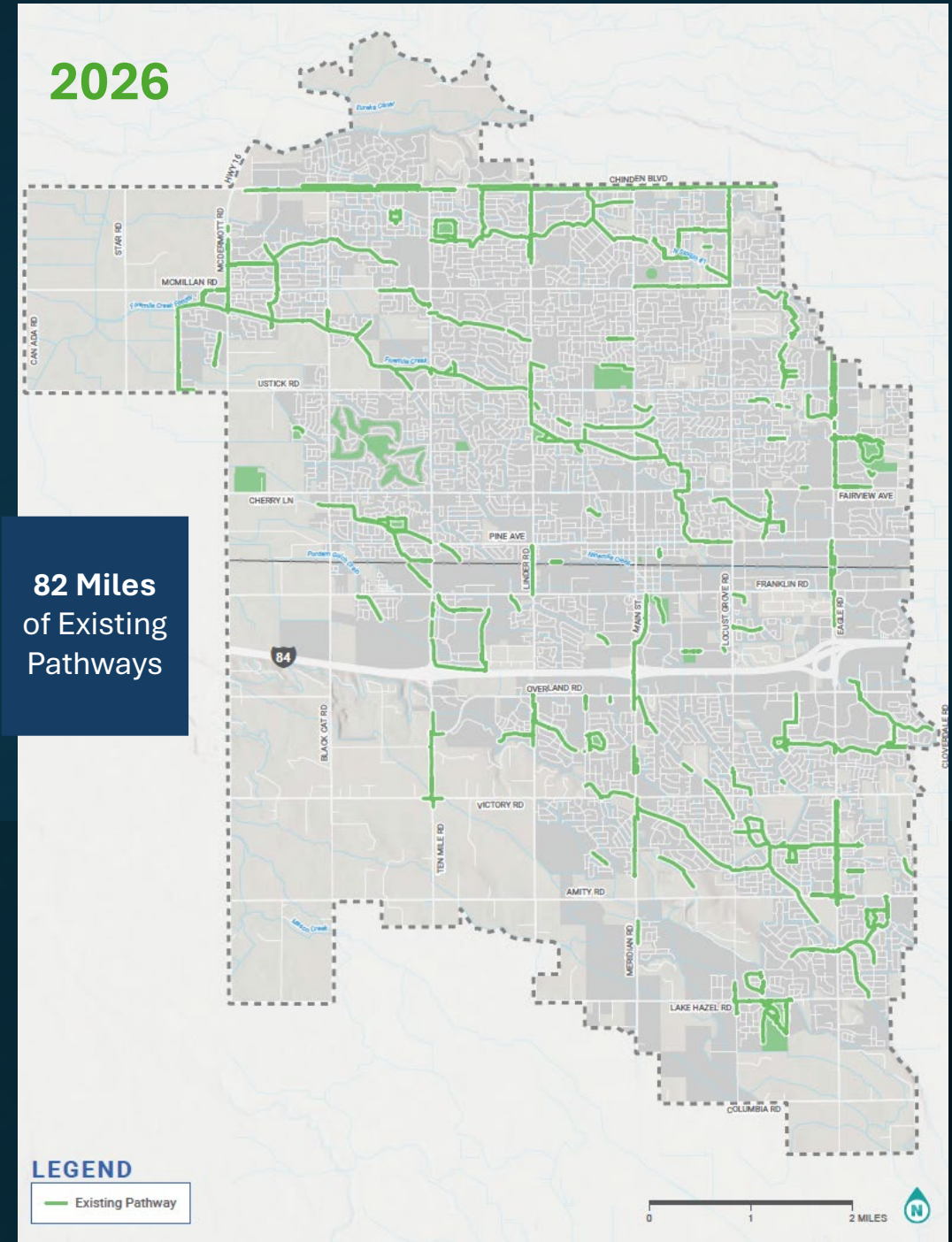
Pathway Network Map



12 Miles of Existing Pathways in 2010

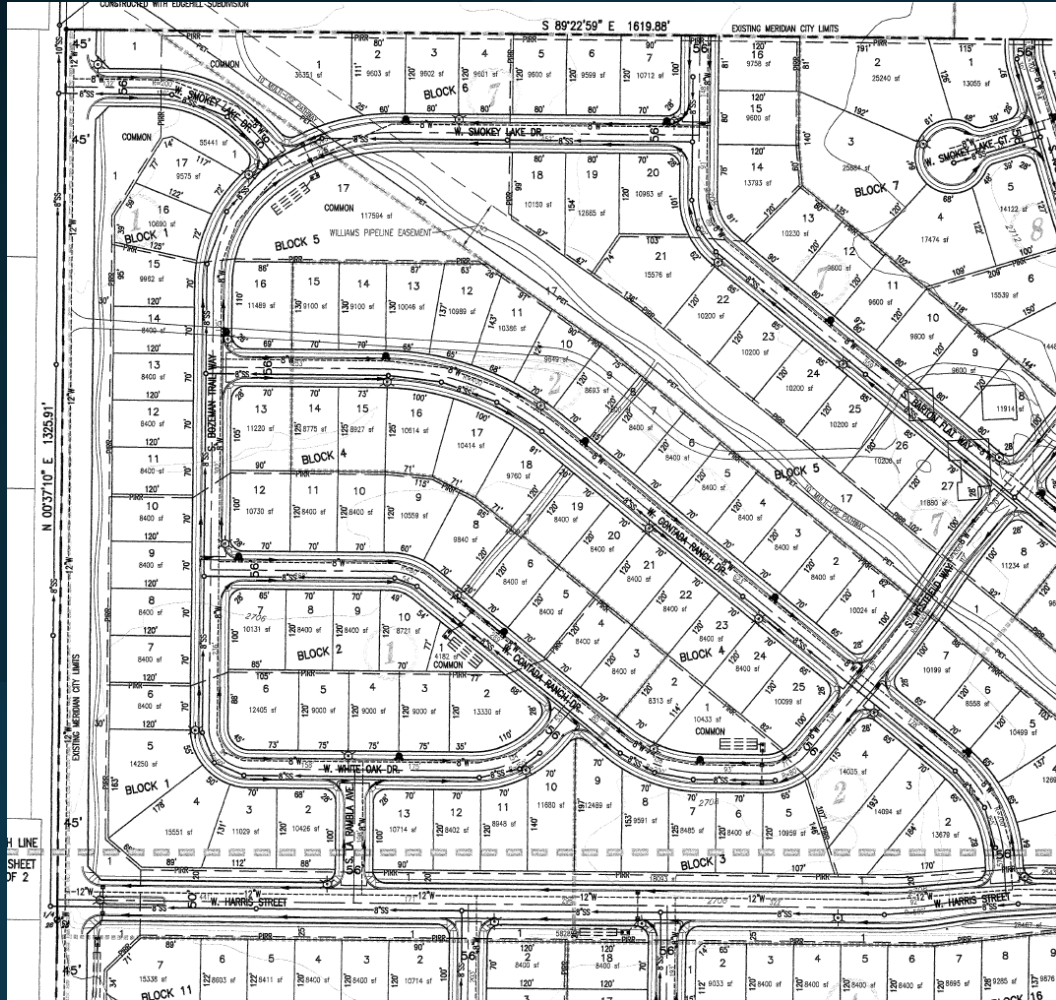
- ◀ ‘Spaghetti Plan’
- ▶ Significantly more connected
- ▶ Meridian’s longest pathway now has a contiguous run of 8+ miles

2026



82 Miles of Existing Pathways

How have we grown the pathway system?



Policy and Program Achievements

- Code Improvements
- Staff takes an active part in plan review for all new development applications
- The majority of new pathways in Meridian are constructed with new residential developments, by developers

Strong Community Support

- Meridian Residents
- Council – Funding for City-led projects
- Partnerships with COMPASS, ACHD, others

Nampa and Meridian Irrigation District

- Master Pathway Agreement

Where are we going?

THE ACTION PLAN IS ORIENTED AROUND FOUR PRIMARY GOALS FOR A PATHWAY SYSTEM THAT:



Connects all neighborhoods to key destinations and activity centers, making pathways a recreation amenity and a way to get to daily needs, for everyone.



Strengthens and expands **partnerships** to grow and enhance the pathway network.



Contributes to a **sense of community**: creating social connection through pathways and placemaking.



Builds awareness of pathways as public amenities that people know and love, making pathways safe, easy to use, and beautiful.

Community Outreach

How did we formulate these goals?

- Initial stakeholder meeting and workshop
- Online interactive survey invitations
- Staff knowledge of the system and its history

For the Pathways Plan update, we asked survey participants to rank the different categories of pathway improvements.

Respondents identified **Safer Street Crossings** as their highest-priority improvement.

TOP IMPROVEMENT PRIORITIES: SURVEY RESULTS

Safer Street Crossings	#1
Connecting More Places	#2
Better Wayfinding	#3
Pathway Etiquette	#4
Building New Pathways	#5
Goathead Mitigation	#6
Awareness of Pathway Locations	#7
Trip Planning Resources	#8
Sharing Pathways with Others	#9



Review of Draft Plan

- Parks and Recreation Commissioners

Goal 1

A pathway system that connects all neighborhoods to key destinations and activity centers: making pathways a recreation amenity and a way to get to daily needs, for everyone

Goal 1

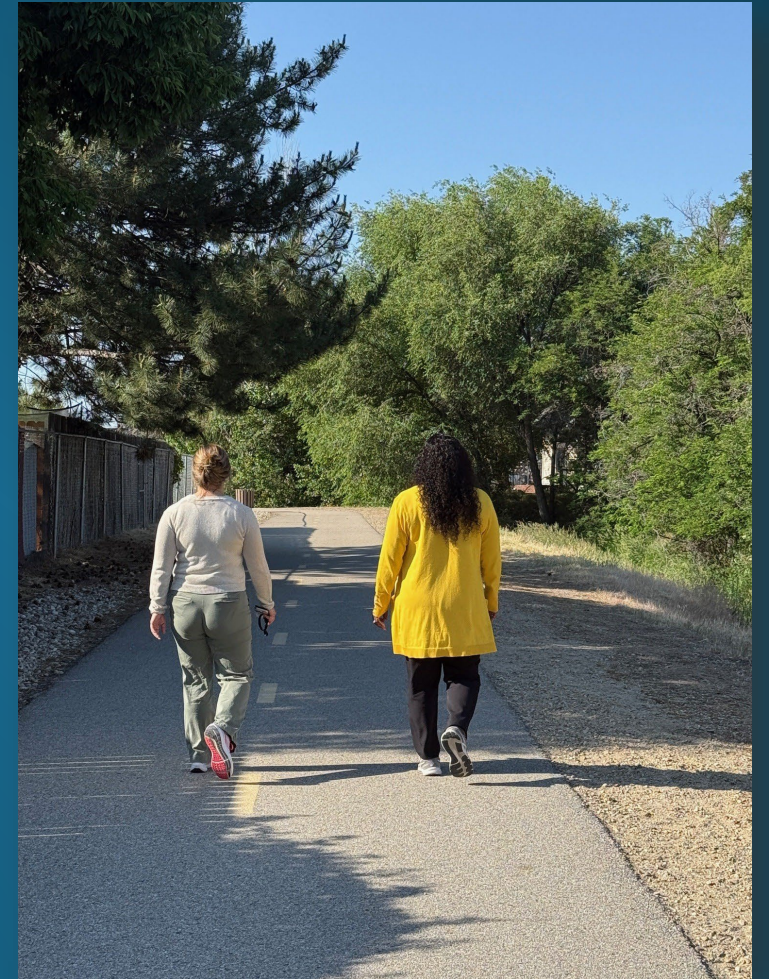
A pathway system that connects all neighborhoods to key destinations and activity centers: making pathways a recreation amenity and a way to get to daily needs, for everyone

Why is this important?

- Provide access *TO* the system for everyone
- Not all neighborhoods, especially older ones, will have a multi-use pathway, but we can work to enhance system access points.

How will we make progress?

- Keep working to fill gaps with City-led projects
- Connections across I-84
- Focus on major destinations, especially parks & schools



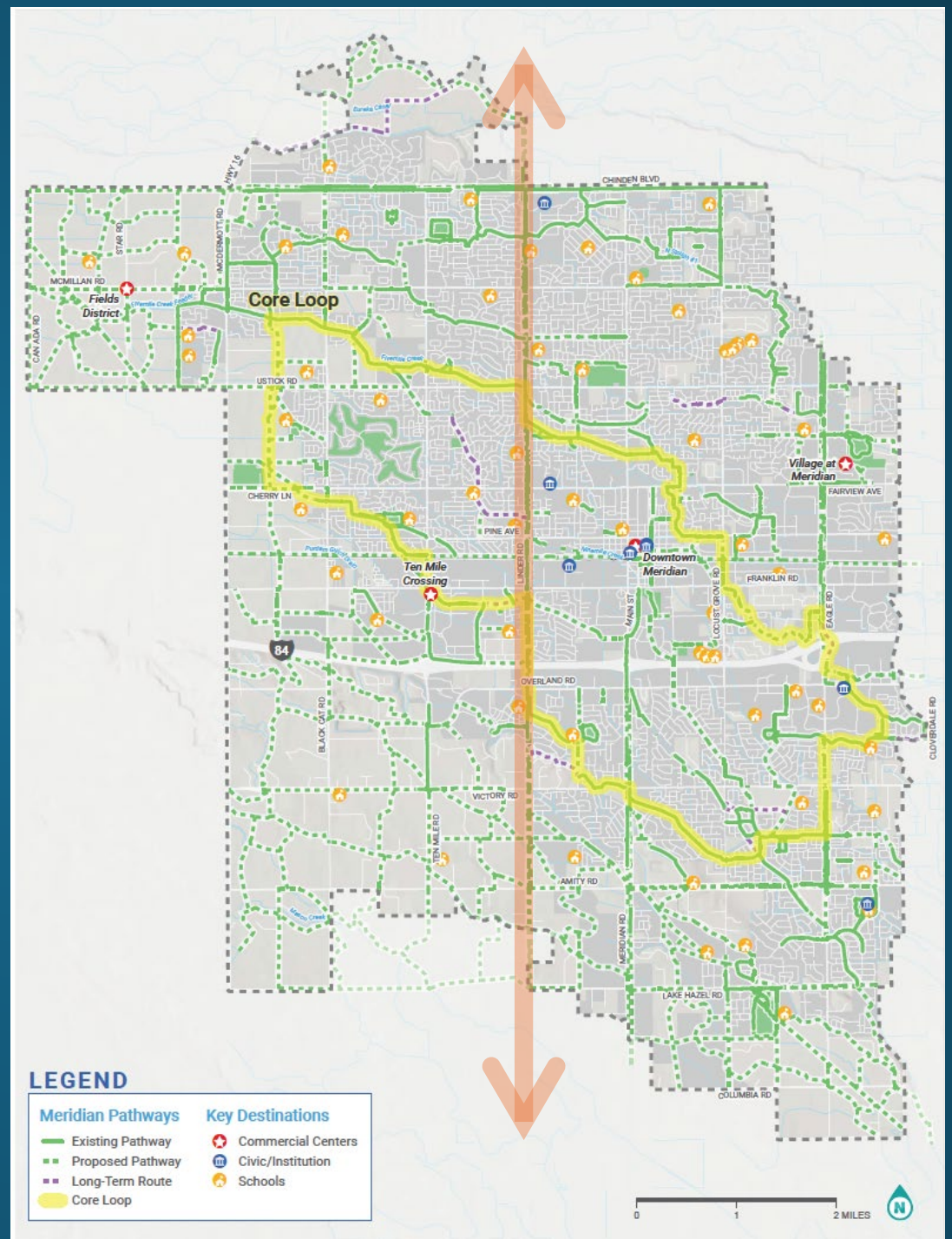
Key Destinations and Linkages

Revised “Core” Loop Pathway Route

- Includes portions of Fivemile Pathway and other major pathway segments.
- Create connection between pathways
- Provide more opportunities for access to the system
- Improve connectivity in the short term

Linder Road (Eagle Island Route)

- Develop as a primary north-south route
- Bisects Core Loop – fosters interconnectedness
- Conduit through Meridian between Eagle and Kuna



Goal 2

*A pathway system built through strong partnerships:
improving and expanding these partnerships to grow and
enhance the network.*

Goal 2

A pathway system built through strong partnerships: improving and expanding partnerships to grow and enhance the pathway network.

We're already doing this in many ways:

- Work with ACHD to get pedestrians off the roadways
- Collaborated on sidepath policy for arterial roadways
- Master Pathway Agreement with Nampa and Meridian Irrigation District

How will we make progress?

- Frequent communication with ACHD, earlier coordination on projects that affect pathways, especially **signaled roadway crossings**
- Cost share opportunities
- Periodic collaboration with Idaho Transportation Department (ITD) to build a stronger working relationship
- Work to establish agreements with other Irrigation Districts
- Coordinate with neighboring municipalities to make pedestrian connections between cities



Goal 3

A pathway system that contributes to a sense of community, creating social connection through pathways

Goal 3

A pathway system that contributes to a sense of community: creating social connections through pathways.

Why is this important?

- A vibrant, well-traveled pathway network feels safe and welcoming
- An active system attracts new users and brings attention and support to pathways

How will we make progress towards this in the next 10 years ?

- Work with outside partners to host events (fun runs or other activities) on the pathway system
- Consider ways to use volunteers along pathways



Goal 4

Building awareness of pathways as public amenities that people know and love, making pathways safe, easy to use, and beautiful.

Goal 4

Building awareness of pathways as public amenities that people know and love, making pathways safe, easy to use, and beautiful.

Why is this important?

- Meridian has mostly focused on building connections.
- Some pathways may be under utilized because people are not aware of them or don't know how to navigate the system.
- Need for more amenities along routes.

How will we make progress towards this in the next 10 years ?

- Mapping and communications – continue to improve online resources for increased user friendliness
- Update development codes to encourage landscape and amenities that enhance pathways
- Wayfinding and signage
- Placemaking – collaborate with local artists

Wayfinding Elements

ACCESS ELEMENTS

Kiosks

Provide system map and navigational information; most effective when placed in plazas, rest areas, or other locations where users may congregate, rest, or enter a path.

Gateway monuments

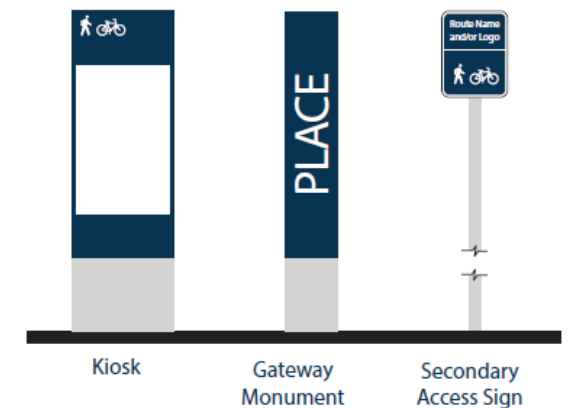
Define the entry into a distinct neighborhood, or mark trailheads, access points, and landmarks. Opportunity for community-directed placemaking and integrated artwork.

Secondary access signs

Mark entry to pathways at locations where limited user traffic may not necessitate as much information as information kiosks.

Placement

- ▶ Major street entries
- ▶ Minor street entries
- ▶ Access points
- ▶ Public green spaces
- ▶ Private green spaces
- ▶ Future + existing trailheads



Wayfinding and Placemaking Guidelines

FUNDAMENTAL NAVIGATION ELEMENTS

Decision signs

Clarify route options where two or more routes converge, or at complex intersections.

Confirmation signs

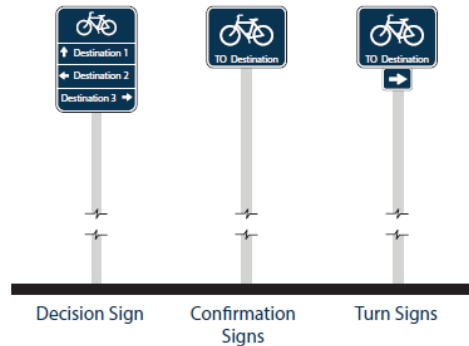
Placed after a turn or intersection to reassure path users that they are on the correct route.

Turn signs

Placed before a turn or intersection to help users stay on the designated path.

Placement

- ▶ Any entries
- ▶ Major intersections
- ▶ Access points
- ▶ Intersections
- ▶ Pathway splits or turns
- ▶ Nodes



Community gateways

Community gateways are physical objects that mark and announce entry into a special district, neighborhood, or the pathway network itself. They may take the form of obelisks, totems, arches, signage, or pavement markers.



Cushing Park neighborhood entrance signpost. Englewood, CO.

Scenic vistas + landmarks

Scenic views and important cultural, environmental, or historical features can be highlighted to enhance the sense of place along the pathway and create a destination or landmark for the community.



Falls at Swamp Rabbit Trail. Greenville, SC.

Gathering and play spaces

This may include a variety of seating areas, trailheads, shade structures, exercise equipment, playscapes, or other improvements that encourage pathway users to stop and explore.



Okanagan Rail Trail, Lake Country, British Columbia

Public art

Public art can add a new dimension to the value of the pathway network while telling some of the region's unique stories or highlighting Meridian's culture, environment, or history.



Sculpture along the Atlanta Beltline. Atlanta, GA.

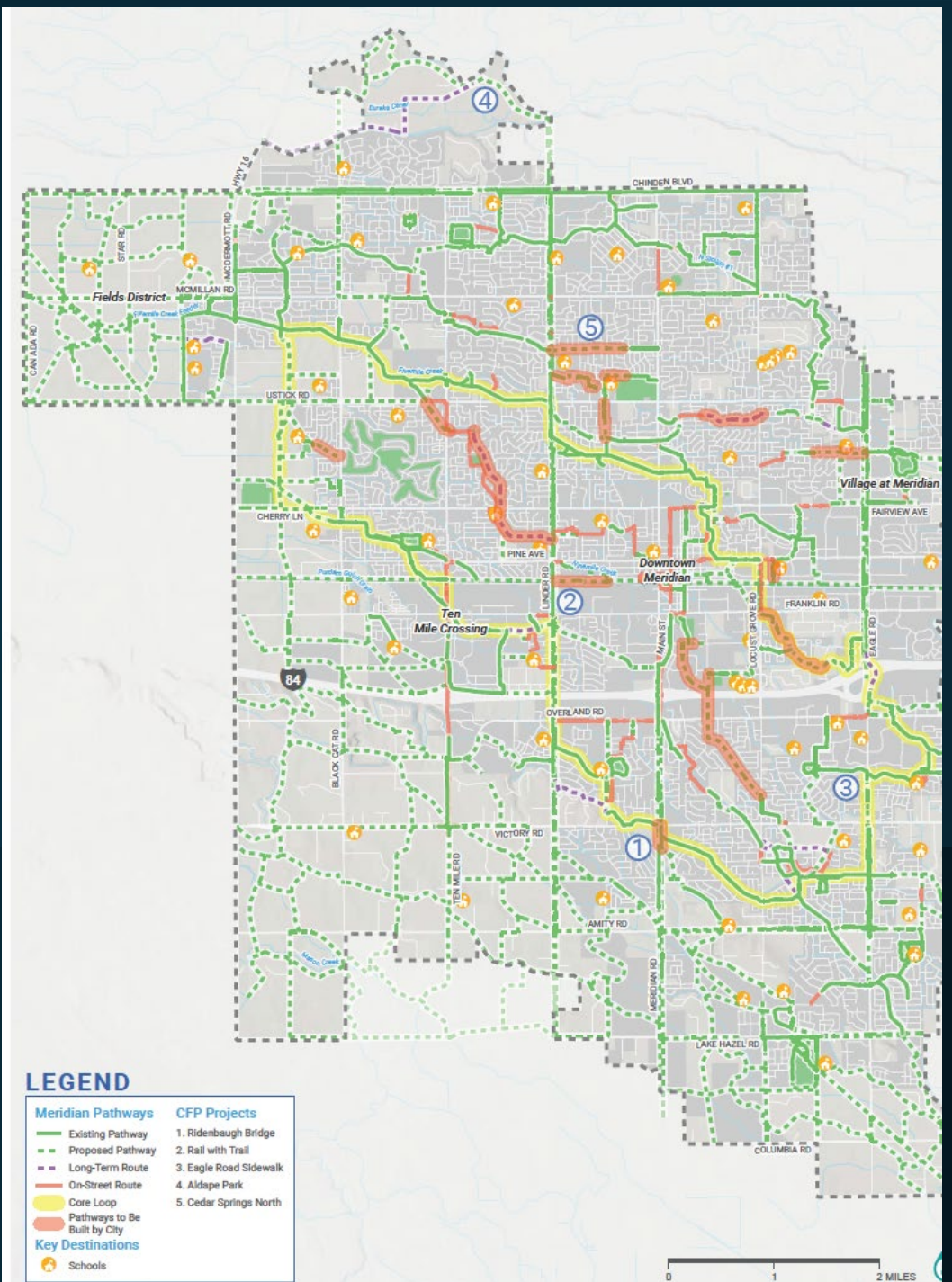
Tool kits for future planning

- Basis for future planning projects
- Helps define what we need so we know what to ask for.

Strategies for Implementation

Map of Pathway Projects to be constructed by the City

- Some along newly identified “Core Loop”
- Keyed numbers show future projects programmed in the CFP
- Anticipated timing may change depending on budget and opportunity








Strategies for Implementation

Summary Tables

Provided for each major goal, with more information on specific tasks, timeline, leads, and priority

TABLE 1. RECOMMENDED ACTION ITEMS

ACTION	ACTION TYPE	TIMELINE	LEAD AGENCY	SUPPORTING PARTNERS	PRIORITY
Conduct a study for each destination lacking connection to identify feasible alignments and access points and how to overcome barriers such as major roadways—potentially through on-street or sidewalk “first mile/last mile” connections.	planning / analysis	 5+ years	Parks & Recreation	COMPASS, ACHD, Valley Transit	normal
Reassess zoning and future land use around planned and potential future pathways to encourage mixed use development around pathways.	policy update	 3-5 years	Community Development Department	Parks & Recreation	normal
Conduct a pathway coverage and access analysis to identify “pathway deserts,” or neighborhoods that don’t have ample access to the pathway network.	planning / analysis	 1-3 years	Parks & Recreation	COMPASS, ACHD	normal
Identify pathway connections that will likely require City or grant funding to design and construct, or that aren’t likely to be built by a developer. Identify public and private funding sources the City can access to advance pathways.	planning / analysis	 1-3 years	Parks & Recreation	Developers	 high priority

Thank You!

