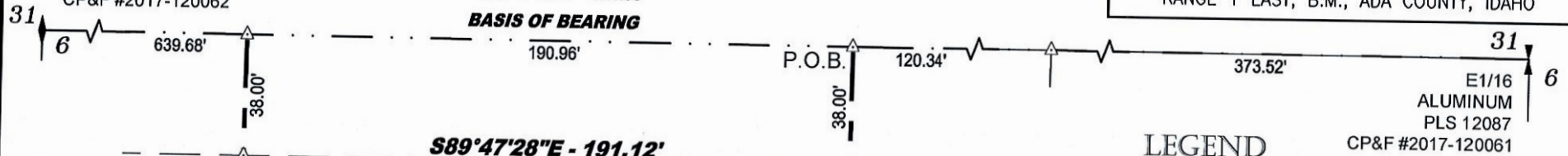


EXHIBIT B

N1/4
BRASS CAP
PLS 12087
CP&F #2017-120062

USTICK ROAD
S89°47'28"E - 1324.50'
BASIS OF BEARING

A PORTION OF NORTHWEST 1/4 OF THE NORTHEAST
1/4 OF SECTION 6, TOWNSHIP 3 NORTH,
RANGE 1 EAST, B.M., ADA COUNTY, IDAHO



LEGEND

- 11 12
11 12
P.O.B.
- 1/4 COR. MONUMNET AS NOTED
- 1/16 COR. MONUMNET AS NOTED
- POINT OF BEGINNING
- CALC. POINT
- FOUND MONUMENT
- ADJOINER LINE
- BOUNDARY LINE
- EASEMENT LINE
- RIGHT OF WAY LINE

**TIMBERFALLS
SUBDIVISION
NO. 1**

10.00' WATER AND
SEWER EASEMENT
NO. 1
AS SHOWN ON TIMBERFALLS
PLAT

N00°30'53"E - 252.39'

160.77'

PARCEL 1
48,356 sq. ft.
1.11 ac.

214.69'
S00°16'42"W - 252.69'



1" = 50'

NARRATIVE:

THIS SURVEY WAS MADE AT THE REQUEST OF KENT MUSSELL TO ESTABLISH THE BOUNDARY AS SHOWN. BOUNDARY WAS DEFINED FROM FOUND MONUMENTS OF FOUND OF RECORD IN THE TIMBERFALLS AND GRANITE CREEK SUBDIVISIONS WHICH ARE NOT SHOWN ON THIS DISPLAY

**GRANITE CREEK
SUBDIVISION**

**TIMBERFALLS
SUBDIVISION
NO. 1**



DISPLAY FOR
ANNEXATION OF
965 E USTICK RD

FILE: 23013 - MUSSELL- USTICK 4-6-2023.dwg

