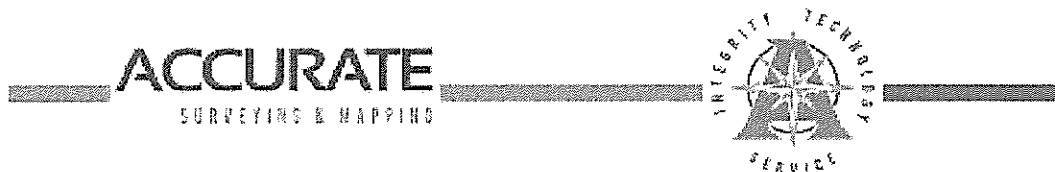


# Exhibit A

## Annexation Legal Description & Exhibit Map



### Annexation Land Description

A parcel of land being a portion of the North Half of the Southwest Quarter of Section 31, Township 3 North, Range 1 East of the Boise Meridian, Ada County, Idaho and all of Lot 4, Block 1 of Shafer View Estates Subdivision as recorded in Book 64 of Plats at Pages 9403 and 9404, Records of Ada County, said parcel is located in the North Half of the Southwest Quarter of Section 31, Township 3 North, Range 1 East of the Boise Meridian, Ada County, Idaho, being more particularly described as follows:

**BEGINNING** at the found aluminum cap monument at the Quarter Corner common to Section 31, T3N, R1E and Section 36, T3N, R1W as perpetuated by document 103052680, Records of Ada County, from which the found brass cap at the township corner common to Township 3 North, Ranges 1 East and 1 West, and Township 2 North, Ranges 1 East and 1 West as perpetuated by document 2019-015470, Records of Ada County bears S 00° 05' 17" E a distance of 2669.99 feet;

Thence N 89° 57' 18" E along the mid-section line for a distance of 2507.75 feet to the northeast corner of said Lot 4;

Thence S 00° 17' 00" W along the easterly line of said Lot 4 for a distance of 1342.40 feet;

Thence along the southerly boundary of said Lot 4 the following 6 courses and distances:

- 1.) N 89° 52' 35" W for a distance of 130.40 feet;
- 2.) N 23° 55' 33" W for a distance of 170.53 feet;
- 3.) N 16° 35' 10" W for a distance of 254.88 feet;
- 4.) N 14° 41' 14" W for a distance of 194.52 feet;
- 5.) N 31° 29' 55" W for a distance of 113.67 feet;
- 6.) N 89° 34' 47" W for a distance of 147.74 feet;

Thence S 34° 28' 44" W for a distance of 190.43 feet to the centerline of E. Shafer View Drive;

Thence N 55° 18' 49" W along said centerline for a distance of 100.09 feet;

Thence leaving said centerline N 34° 41' 11" E for a distance of 107.53 feet;

Thence along the southerly boundary of said Lot 4 the following 15 courses and distances:

- 1.) N 04° 09' 19" E for a distance of 90.81 feet;
- 2.) N 26° 42' 26" W for a distance of 85.32 feet;
- 3.) N 56° 39' 37" W for a distance of 87.95 feet;
- 4.) N 75° 35' 35" W for a distance of 90.88 feet;

1502 W Hays St., Suite 306 • Boise, ID 83702 • Phone: 208-485-4227 •  
www.accuratesurveyors.com



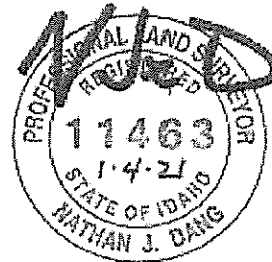
- 5.) N 86° 33' 28" W for a distance of 185.49 feet;
- 6.) S 71° 44' 26" W for a distance of 113.88 feet;
- 7.) S 60° 59' 28" W for a distance of 112.30 feet;
- 8.) N 76° 52' 47" W for a distance of 210.54 feet;
- 9.) S 78° 31' 59" W for a distance of 45.73 feet;
- 10.) S 51° 53' 13" W for a distance of 147.64 feet;
- 11.) S 65° 24' 50" W for a distance of 258.22 feet;
- 12.) S 17° 39' 49" W for a distance of 98.75 feet;
- 13.) S 03° 59' 33" E for a distance of 50.00 feet;
- 14.) 88.38 feet along the arc of a 275.00 foot radius curve right having a central angle of 18° 24' 12" and a long chord bearing N 84° 38' 15" W a distance of 88.00 feet;
- 15.) S 28° 48' 47" W for a distance of 206.91 feet to the centerline of E. Shafer View Drive;

Thence along said centerline the following 4 courses and distances:

- 1.) 103.63 feet along the arc of a 500.00 foot radius curve right having a central angle of 11° 52' 28" and a long chord bearing N 47° 59' 54" W for a distance of 103.44 feet;
- 2.) N 42° 01' 36" W for a distance of 107.12 feet;
- 3.) 83.86 feet along the arc of a 100.00 foot radius curve left having a central angle of 48° 02' 45" and a long chord bearing N 66° 02' 58" W a distance of 81.42 feet;
- 4.) S 89° 55' 39" W for a distance of 219.88 feet to the section line;

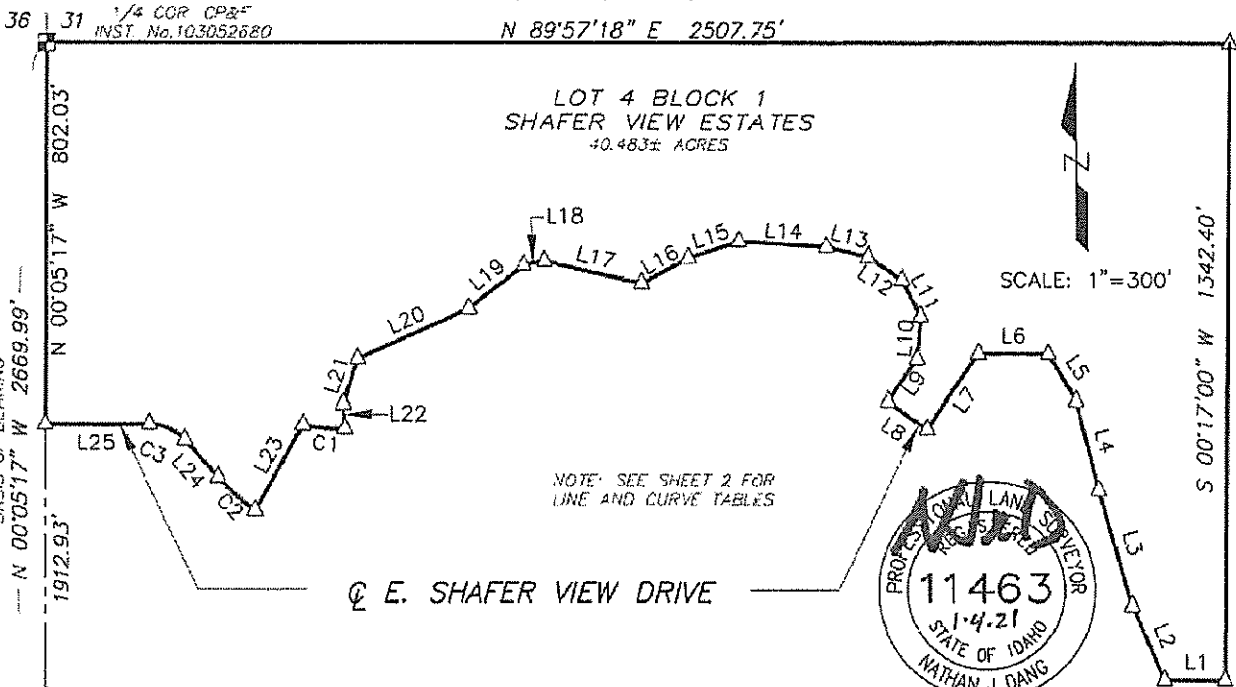
Thence N 00° 05' 17" W along the section line for a distance of 802.03 feet to the REAL POINT OF BEGINNING.

Parcel contains 40.483 acres, more or less.

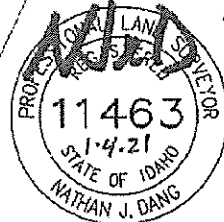


# ANNEXATION MAP

PARCEL LYING IN THE N 1/2 OF THE SW 1/4,  
SECTION 31, T.3N., R.1E., B.M.



NOTE: SEE SHEET 2 FOR  
LINE AND CURVE TABLES



## LEGEND

- ANNEX BOUNDARY
- SECTION LINE
- FOUND 3 1/2" BRASS CAP MONUMENT
- FOUND 2" ALUMINUM CAP
- CALCULATED POINT



**ACCURATE**

SURVEYING & MAPPING  
1602 W. Hays Street #306  
Borise, Idaho 83702  
(208) 488-4227  
www accuratesurveyors.com

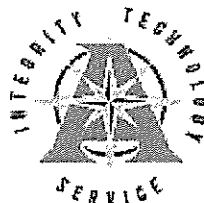
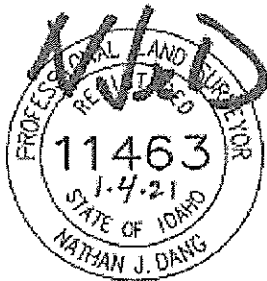
T3N R1W 36    31 T3N R2W  
T2N R1W 1    6 T2N R2W  
CP&F INST. No.  
2019-015470

### LINE TABLE

LINE	BEARING	DISTANCE
L1	N 89°52'35" W	130.40'
L2	N 23°55'33" W	170.53'
L3	N 16°35'10" W	254.88'
L4	N 14°41'14" W	194.52'
L5	N 31°29'55" W	113.67'
L6	N 89°34'47" W	147.74'
L7	S 34°28'44" W	190.43'
L8	N 55°18'49" W	100.09'
L9	N 34°41'11" E	107.53'
L10	N 04°09'19" E	90.81'
L11	N 26°42'26" W	85.32'
L12	N 56°39'37" W	87.95'
L13	N 75°35'35" W	90.88'
L14	N 86°33'28" W	185.49'
L15	S 71°44'26" W	113.88'
L16	S 60°59'28" W	112.30'
L17	N 76°52'47" W	210.54'
L18	S 78°31'59" W	45.73'
L19	S 51°53'13" W	147.64'
L20	S 65°24'50" W	258.22'
L21	S 17°40'26" W	98.75'
L22	S 03°59'33" E	50.00'
L23	S 28°48'47" W	206.91'
L24	N 42°01'36" W	107.12'
L25	S 89°55'39" W	219.88'

### CURVE TABLE

CURVE	ARC LENGTH	RADIUS	DELTA ANGLE	CHORD BEARING	CHORD LENGTH
C1	88.38'	275.00'	18°24'50"	S 84°38'15" E	88.00'
C2	103.63'	500.00'	11°52'28"	N 47°59'54" W	103.44'
C3	83.86'	100.00'	48°02'45"	N 66°02'58" W	81.42'



**ACCURATE**  
 SURVEYING & MAPPING  
 1602 W. Hays Street #306  
 Boise, Idaho 83702  
 (206) 488-4227  
[www accuratesurveyors.com](http://www accuratesurveyors.com)