



---

**Exhibit 'A'**  
**Denton and Ancheri Roberts**  
**5-Foot Public Utility Easement Description**

A Public Utility Easement within a portion of Lots 2 and 3 as shown on Heritage Subdivision No. 2, Book 23 Page 1453, within the Southwest 1/4, of the Northwest 1/4, of Section 32, Township 4 North, Range 1 East, Boise Meridian, Ada County, Idaho, being a (portion of Warranty Deed Instrument No. 113131269) more particularly described as follows:

COMMENCING at the Northeast corner of said Lot 2 as monumented by a found 1/2-inch rebar, placed cap stamped "FLSI PLS 8575", thence North 89°31'13" West, 257.95 feet, to the Northwest corner of said Lot 2 as monumented by a found 1/2-inch rebar, placed cap stamped "FLSI PLS 8575"; thence South 44°29'12" East, 7.07 feet to the **POINT OF BEGINNING**;

Thence South 89°31'13" East, 247.95 feet, along the south edge of existing utility easement;

Thence South 00°32'52" West, 140.00 feet, along the west edge of existing utility easement;

Thence North 89°31'37" West, 5.00 feet;

Thence North 00°32'52" East, 135.00 feet;

Thence North 89°31'13" West, 242.95 feet;

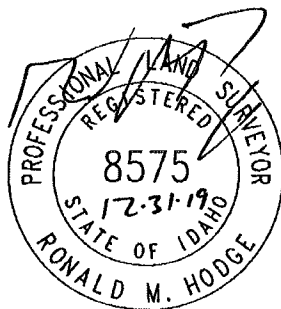
Thence North 00°32'49" East, 5.00 feet to the **POINT OF BEGINNING**.

Containing 1914.75 square feet more or less

As shown on Exhibit 'B' Survey Map

End of description

Prepared By:  
Ronald M. Hodge, PLS 8575  
Project Manager

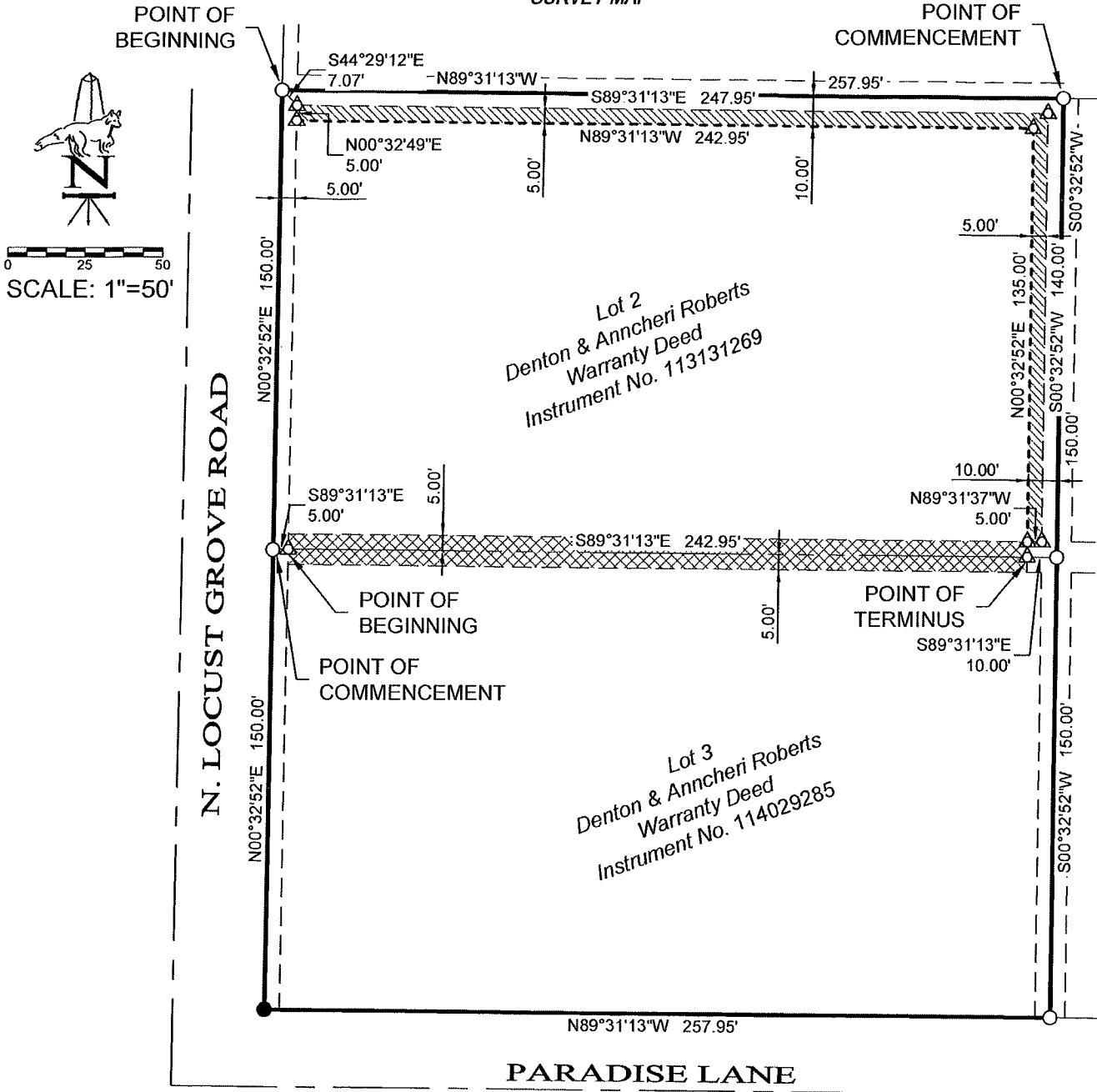


RH:JR

Roberts Annexation Easement Vacation H-2021-0038

# EXHIBIT 'B'

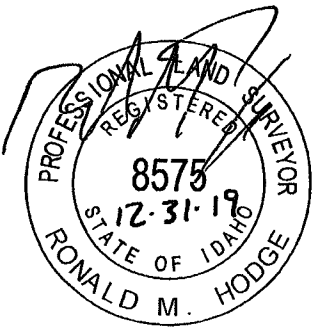
## SURVEY MAP



### LEGEND

- BOUNDARY
- NEW EASEMENT
- RECORD EASEMENT PER HERITAGE SUB. No. 1 TIE
- FOUND 1/2" REBAR, NO CAP, SET CAP "FLSI PLS8575"
- SET 1/2" REBAR, PLASTIC CAP "FLSI PLS8575"
- CALCULATION POINT
- NEW UTILITY EASEMENT AREA
- PLATTED EASEMENT AREA TO BE RELINQUISHED

NOTE: THIS DRAWING IS A VISUAL REFERENCE ONLY.



DS.JR	SCALE: 1"=30'	DATE: 12-31-2019	<b>DENTON AND ANCHERI ROBERTS</b> ADA COUNTY, IDAHO SEC.32, T.4N, R.1E, B.M.	<b>FOX LAND SURVEYS INC.</b> (208) 342-7957 AN IDACORP Company
DR.TRC	SHT. 1/1	19044MS.dwg		
SV.RMH				