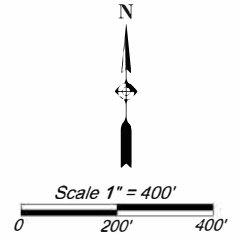
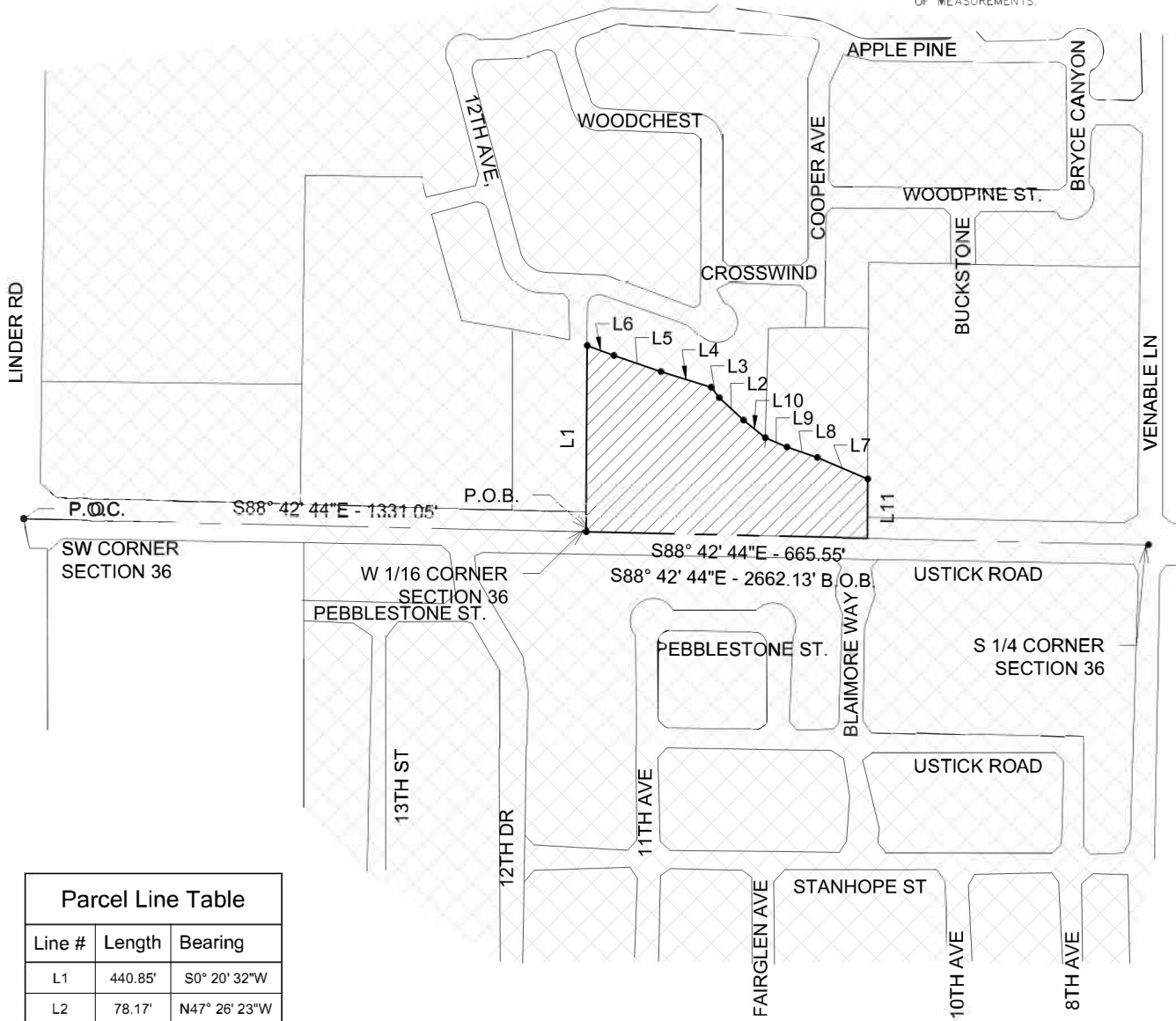


ANNEXATION EXHIBIT B



PORTION OF SW 1/4 OF THE SE 1/4
OF THE SW 1/4 OF SECTION 36,
T.4N., R1.W., BOISE MERIDIAN, CITY
OF MERIDIAN, ADA COUNTY, IDAHO.



BEARINGS AND DISTANCES MAY VARY FROM PREVIOUS PLATS DUE TO DIFFERENT METHODS OF MEASUREMENTS.



Parcel Line Table		
Line #	Length	Bearing
L1	440.85'	S0° 20' 32"W
L2	78.17'	N47° 26' 23"W
L3	31.20'	N38° 28' 47"W
L4	123.96'	N72° 42' 37"W
L5	117.61'	N71° 13' 56"W
L6	67.37'	N69° 15' 27"W
L7	129.84'	N67° 09' 18"W
L8	75.67'	N71° 02' 01"W
L9	55.79'	N66° 36' 48"W
L10	66.02'	N51° 23' 44"W
L11	141.63'	N0° 23' 45"E

- FOUND MONUMENT
 - B.O.B. BASIS OF BEARING
 - P.O.B. POINT OF BEGINNING
 - P.O.C. POINT OF COMMENCEMENT
-  CITY OF MERIDIAN
 -  AREA TO BE ANNEXED