



PARKS & RECREATION COMMISSION

SPECIAL MEETING • MINUTES

**City Hall Council Chambers, 33 East Broadway Avenue, Meridian, Idaho
Wednesday, March 12, 2025 • 4:00 p.m.**

The Meridian Parks & Recreation Commission is a volunteer citizens' group that is created and empowered to advise the City on issues relating to park facilities and recreation programs of the City. Their mission is to gather input from staff and other qualified personnel on issues relating to the creation and design of public parks and open spaces; to listen to public input; and to provide advice and recommendations on parks and recreation related matters to the Mayor and City Council.

ROLL-CALL ATTENDANCE

Commission Chair Dom Gelsomino called the meeting to order at approximately 4:02 p.m. MPR Administrative Assistant II Rachel Myers took roll-call attendance as follows:

X Dom Gelsomino, Chair

X Brienne Sandow, Vice Chair

X Jennifer Bobo

X Terry Dennington

X Mandi Roberts

O John Nesmith

X Jo Greer

X Alan Helms

X Elle Hood

Others present were: MPR Department staff—Parks and Recreation Director Steve Siddoway, Parks Superintendent Mike Barton, Recreation Superintendent Garrett White, Recreation Coordinator for Activities and Camps Jenna Fletcher, Pathways Project Manager Kim Warren, Administrative Assistant II Rachel Myers, Deputy City Attorney Emily Kane, President of Meridian Co-Op Gardeners Juli Bokenkamp, and University of Idaho student Jose Duran.

ADOPTION OF THE AGENDA

Commission Chair Dom Gelsomino asked for a motion to adopt the evening's agenda.

Commissioner Jo Greer moved to adopt the agenda. Commissioner Mandi Roberts seconded. All were in favor of the motion.

APPROVAL OF THE MINUTES

1. February 12, 2025 Special Meeting

Commission Chair Dom Gelsomino asked for a motion to adopt the minutes as presented.

Commissioner Jo Greer moved to adopt the minutes. Commissioner Terry Dennington seconded. All were in favor of the motion.

ANNOUNCEMENTS

2. Upcoming Events

Director Steve Siddoway announced the upcoming retirement celebration for Roger Norberg, the Parks Maintenance Manager. The reception will be held on Tuesday, April 1, 2025, from 2:00 PM to 3:00 PM at Meridian City Hall in Conference Rooms A & B. Director Siddoway invited the commissioners to join in bidding farewell to Roger, expressing his gratitude for Roger's dedicated service. He highlighted that Roger's leadership has been key to the success of the Parks Maintenance program over the past 16 years.

Director Siddoway proposed Wednesday, September 10, 2025, as the date for the Parks and Recreation tour for commissioners and the City Council, with September 3, 2025, as a backup option, if needed.

Director Siddoway also presented the events calendar, highlighting the successful reception on March 4, 2025, at the Initial Point Gallery for the unveiling of a new art exhibit. He encouraged the commissioners to visit and enjoy the exhibit.

The Main Street Market will begin in mid-April and run through late August. The next major event will be "Unplug and Be Outside" on May 10, 2025. The floor was open for questions and discussion.

Commissioner Terry Dennington inquired about the Daughters of the American Revolution (DAR) plaque installation. Director Siddoway responded that the event is scheduled for April 1, 2025, starting at 11:00 AM at Heroes Park.

Commissioner Terry Dennington inquired as to why the end date for the Main Street Market has changed. Recreation Superintendent Garret White explained that attendance significantly declined after August due to reduced availability of produce, and the Market is testing an earlier closing date to evaluate its effectiveness. No further questions were raised. (PDF attachment)

OLD BUSINESS ~ NONE

NEW BUSINESS

3. Kleiner Park Community Garden Update

Juli Bokenkamp, President of Meridian Co-op Gardeners, presented the 2024 Annual Report, marking her 13th year at the Kleiner Park Community Garden. She expressed gratitude for the stellar partnership with the City of Meridian, acknowledging the support received.

Kleiner Park Garden Overview:

- Size: 0.67 acres
- Supports 33 families who help maintain the garden
- Provides 6,000 – 9,000 lbs of produce annually for local food banks
- Acknowledgement of City employees for their assistance with garden maintenance

Discovery Park Garden:

- Now fully operational with Chris Verkerk as the lead
- Challenges faced last year included extreme heat, air quality issues, and plant diseases, which impacted production.

Commendation of Volunteers and Community Involvement:

Juli commended the 33 families working in the gardens and highlighted the numerous physical and mental health benefits of gardening. She noted that the community enjoys the beauty of the gardens while visiting the parks.

Replacement for President Role:

Juli expressed concerns about finding a replacement for her position and the need for continued leadership.

Idaho Food Bank Contribution:

The Idaho Food Bank praised the high quality of the produce and the importance of the donations.

Community Engagement:

The gardening community stays connected during the off-season through gatherings and training sessions to prepare for the upcoming season. Children are encouraged to participate alongside adults.

Western Idaho Fair Awards and Recognition

- 34 Agriculture Ribbons
- 18 Horticulture Ribbons
- 3rd Blue Ribbon Award in the Agriculture Division

Pollinator Projects:

Projects at Kleiner and Heroes Park have matured, resulting in an increase in pollinator populations at both sites.

Volunteer Contributions:

- 40 hours of volunteer work were contributed, including participation from Girl Scouts and local FFA youth.
- Ada County Sheriff Labor Detail provided 192.5 hours of service.

Juli concluded by thanking all of the partners and friends who have contributed to the success of the gardens. The floor was open for questions, and the presentation concluded with an invitation for further discussion.

Commission Chair Dom Gelsomino thanked Juli for her presentation and asked if any crops had bolted due to the weather. Juli explained that bolting is common, noting that two rows of broccoli experienced this. Chair Gelsomino then asked about planting row spacing and its connection to plant diseases. Juli explained that the row spacing was designed to reduce pests and diseases. Chair Gelsomino also inquired about pest issues with the fruit trees. Juli shared that two trees were replaced last year and that the new trees appear healthier. She emphasized efforts to minimize chemical use on both trees and in the gardens.

Commissioner Jennifer Bobo expressed her appreciation for the gardens, noting how they enhance the community's beauty and are enjoyed by many groups. Commissioner Jo Greer asked how the commission could get involved with the gardening project, to which Juli replied that she can be contacted via Facebook Messenger, or by email at jkboke@msn.com. Commissioner Mandi Roberts praised the garden's variety and the involvement of local children, asking if schools could be added to the gardening program. Juli responded that the group is collaborating with the STEM Academy and now has 18 raised beds. The Kleiner gardening group is available to assist groups interested in developing gardening skills. Commissioner Mandi Roberts also inquired if Meridian Parks and Recreation would expand the program to all parks. Director Steve Siddoway clarified that the program would not extend to all parks but would be available in larger regional parks, with each location needing a program lead. No further questions were raised. (PowerPoint attached)

4. Margaret Aldape Park Update

Joseph Duran, a Graduate Student at the University of Idaho, presented the Margaret Aldape Park concept. He provided a brief history of Margaret Aldape and details of the land designated for the park. Studies were completed to determine the best placement for the park. The park's location aims to create a "gateway" to connect with other cities. Joseph highlighted the importance of considering flood zones and revised the park design to account for flooding risks, using FEMA maps to guide structure placement in the new conceptual design.

Goals for the Margaret Aldape Park are:

- Basque heritage art and interpretive displays throughout the park
- An intentional entryway to welcome visitors
- Limited disruption to wildlife and enhancement of wildlife habitats to attract more birds and animals
- Inclusivity and diversity in recreational sports

- A pathway system to provide Meridian's first access to the Boise River Greenbelt
- Access to both the Boise River and Aldape Pond

Recreational Activates for the Park:

- Active Transportation – Multipurpose paths promoting walking or biking
- Kayaking
- Fishing – Pond to be stocked with fish seasonally
- Disc Golf

Joseph presented both the original concept plan and the redesigned master plan for the park, detailing the proposed amenities and features. After concluding his presentation, he opened the floor for questions.

Commissioner Alan Helms asked about the intended location of the conceptual park. Joseph responded that the ideal location would be to the east of Highway 16, north of Chinden Blvd. Commissioner Mandi Roberts commended Joseph for his work on the park's conceptual design, particularly for redesigning it with flood zone considerations. Commissioner Jennifer Bobo inquired about the current use of the land where the park is planned. Joseph explained that it is currently in its natural state, with the pond already in place.

Commissioner Jo Greer expressed appreciation for Joseph's work and asked about access to the property in relation to the canal. Joseph acknowledged that this had posed a design challenge, which he is currently addressing. Commissioner Terry Dennington inquired about the size of the Aldape/Basque building. Joseph responded that, keeping in mind that the design is conceptual, it is planned to be 20x30 feet and will feature Basque art and history. No further questions were raised. (PDF attached)

5. MPR Department Classes & Camps Update

Recreation Coordinator for Activities and Camps Jenna Fletcher provided a PowerPoint presentation updating the commissioners on upcoming classes and camps. She explained her duties and described several upcoming classes she organizes. She provided a screenshot of revenue history from FY2017 through FY2024, including a breakdown of revenue from classes, Camp Mer-IDA-Moo, and Outdoor Adventure Camp. Camps book up quickly, with some filling as fast as 8 minutes upon opening day.

- Camp Mer-IDA-Moo
June 3–August 2, 2024: 752 kids attended
 - 18 trips to the Meridian City Pool
 - 18 trips to city parks
 - 14 field trips

- Outdoor Adventure Camp
June 3-Aug 2
 - 91 kids attend camp
 - 9 Weeks of camp
 - 76 kids attended
 - One van to transport 10-12 kids
- 2024 Classes
 - Offered 800 classes
 - Over 4,200 participants

Jenna reviewed the 2025 program, which includes running two school sites, with potential to add more if staffing allows. The next activity guide will be released on April 2, 2025, featuring a variety of camps, classes, and outdoor activities such as rafting, trips to Bogus Basin, and swimming. Jenna shared pictures of participants enjoying various activities and locations where the classes are held. She also presented her calendar of activities, listing upcoming booked locations. To conclude, Jenna discussed current and upcoming events, the potential for more classes with the new Community Center and opened the floor for questions.

Commissioner Bobo inquired whether the challenges were more related to staffing or space for classes and summer camps. Jenna replied that staffing shortages for summer camps have been an ongoing issue since 2019. Recreation Superintendent Garrett White shared his thoughts on the success of the summer camps and programs, emphasizing the hard work that makes them so successful. No further questions were raised. (PowerPoint attached)

WORKSHOP ~ NONE

STAFF REPORTS

5. MPR Staff

Director Steve Siddoway reported on the following:

1. Discovery Park Garden- Christopher Verkerk from the Discovery Park Community Garden will be presenting next month in their first year
2. Aldape Park Site tour - Director Steve Siddoway inquired if the commissioners have had the opportunity to tour the area that is being considered for the park area. He will consider this as a location for the next tour for commissioners. Administrative Assistant II, Rachel Myers, pulled up a Google map of the area for viewing. Director Steve Siddoway explained the location of the area marked for the park on the map.
3. The Budget – He is currently working on the base budget
4. City Wide Employee Meeting – Coordinating with other Directors to prepare for the meeting for all city employees.

The floor was opened for questions. No further questions were raised from the Commissioners.

MPR Parks Superintendent Mike Barton reported on the following:

1. Working on a shade system for the community garden. He is looking for a shade system that feels organic with the landscape of the garden.
2. Ongoing work is continuing for the restrooms at Lakeview Golf Course.
3. Ustick Road – ACHD is working on the widening of 3 miles on Ustick Road and the City will be working on the landscaping of the medians.
4. Ninja Course – The ninja course will be installed soon.
5. Promotion of Jeremy Aldrich – Jeremy Aldrich has been promoted to the position of Maintenance Manager following Roger Norberg's retirement. Mike acknowledged Jeremy's years of dedicated service and emphasized that his experience and leadership qualities made him the ideal candidate for the role.

The floor was opened for questions. Commissioner Alan Helms commended the project, specifically the new restrooms at Lakeview Golf Course. Mike provided additional details about the project and the status of the anticipated opening. No further questions were raised.

MPR Recreation Superintendent Garrett White reported on the following:

1. Budget review – Working on next year's budget with Director Steve Siddoway.
2. Community Center—He is refining the details to optimize the Community Center plan.
3. Interviews – Actively working on filling the Arts and Culture Assistant position, Administrative Assistant position, as well as seasonal roles for the pool and golf areas, and summer camp positions.
4. Council Meeting- He went to the Council Meeting to review the pool fees increase with the Council and prepare for the upcoming public hearing.
5. Idaho Parks and Recreation Association Conference – The event will be held in Nampa this year. Several staff members, including Director Steve Siddoway, Recreation Coordinator for Activities and Camps Jenna Fletcher, and himself, are coordinating the entire conference. The event is scheduled for April 28-May 1.

The floor was opened for questions. No further questions were raised from the Commissioners.

Pathways Project Manager Kim Warren reported on the following:

1. 5-Mile Pathway – Progress is being made on the 5-Mile Pathway west of McDermott Road. Plans have been completed, however, there are some unexpected roadblocks she is working through. Once these are resolved it will be ready to put out to bid.
2. Trail Hub Front- Located at Ten Mile Road, the Five Mile Creek Trail Hub is approved by ACHD for a new restroom building.

3. Rail with Trail – 60% plans for the pathway stretch just west of City Hall have been completed. Finalization of the plans is expected in July to allow for the project to be put out for bid.

The floor was opened for questions. No further questions were raised from the Commissioners.

NEXT MEETING ~ WEDNESDAY, April 9, 2025, AT 4 PM

ADJOURNMENT

Commission Chair Dom Gelsomino called for a motion to adjourn the meeting. Commissioner Jo Greer moved to adjourn. Vice Chair Commissioner Brienne Sandow seconded. All were in favor of the motion.

There being no further business, the meeting adjourned at approximately 5:34 p.m.

APPROVED:

DOM GELSOMINO, CHAIR

_____/_____/_____
DATE

BRIENNE SANDOW, VICE CHAIR

/js

Attachments:

Roger Norberg Retirement Flyer

2025 Event Calendar Flyer

Kleiner Park Community Garden PowerPoint

Aldape Park Concept PDF Presentation

Classes and Camps Update PowerPoint

RETIREMENT

Celebration



Roger Norberg

Please join us for a Retirement Reception
honoring retiring Parks Maintenance Manager
ROGER NORBERG

16 years with the City of Meridian ✨

Tuesday, April 1, 2025

2:00 - 3:00 pm

Meridian City Hall

Conference Rooms A & B ✨

2025

Events Calendar

Initial Point Gallery Opening Receptions

February 4, March 4, April 1, May 6, June 3,
August 5, September 2, November 5,
December 2

Do the Right Day

Thursday, April 10

Meridian Main Street Market

Saturdays, Mid-April through Late-August

Prescription Drug Take-Back

Saturday, April 26

Trash or Treasure

May 17 & 18

Unplug & Be Outside

May 10

Go with the Flow Bus Tour

Monday, May 19

Public Works Week Expo

Thursday, May 22

Memorial Day Ceremony

Monday, May 26

Meridian Pool Season Opens

Monday, June 2

State of the City Address

Wednesday, June 4

Sparklight Movie Nights

May 30, June 13, June 27, July 11, July 25,
August 8

Bri Kleiner Park Live Concert Series

June 6, June 20, July 18, August 1,
August 15

Gene Kleiner Day

Saturday, June 14

Meridian Dairy Days

June 18 – 21

Independence Day Celebration

Friday, July 4

National Night Out

Tuesday, August 5

Concerts on Broadway

July 12, August 9, September 6

Community Art Party

To Be Announced

Meridian Art Week

September 13—19

Recovery Day Breakfast

Thursday, September 25

Public Safety Day Open House

Saturday, September 27

Trunk or Treat

Thursday, October 23

Rake Up Meridian

Late October / Early November

Veterans Day Ceremony

Tuesday, November 11

Winter Lights Parade & Tree Lighting

Friday, December 5

Children's Winterland Festival

Saturday, December 13



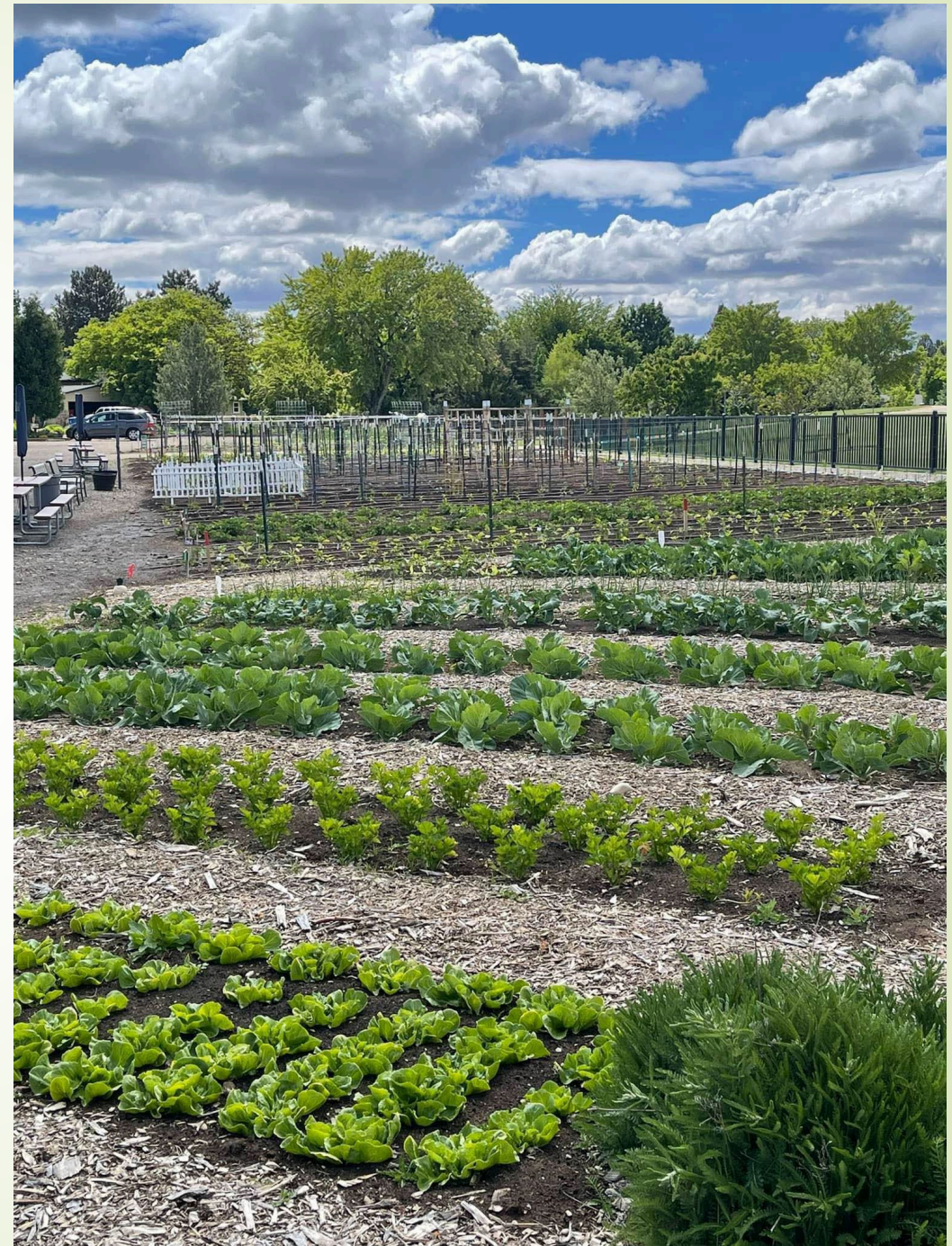
Find information about these events and more at:
meridiancity.org/calendar

Meridian Co-Op Gardeners

2024 Annual Report

Beauty in ALL Things

Kleiner Park Community Garden and
pollinator projects.



Partnership with the City of Meridian

- Together we are growing an amazing garden. We couldn't do this without your support.
- This garden reflects the love and care that we pour into everything we grow.



- Amazing employees
- Land and water
- Irrigation repairs
- Use of heavy equipment
- Driplines for raised beds
- Use of Rooms A-B
- Soil Test
- Compost to amend soil
- Shrubs and flowers
- Rock for back of garden
- 4 umbrellas and stands
- Pavilion B
- Large trash receptacle



The Elephants in the Room.



Beauty in ALL Things



Rooted in Relationships

Building community and connections through gardening together AND growing food for our families and local food banks. The commitment and unwavering dedication of our gardeners makes a difference.





Staying Connected



Always Learning





Lil' Gardeners





Growing Food

We find ourselves with the unique opportunity to grow our own food. We believe it's important to grow food organically, reduce our environmental footprint and strengthen our local food system. Do you know where your food comes from?





Mushrooms



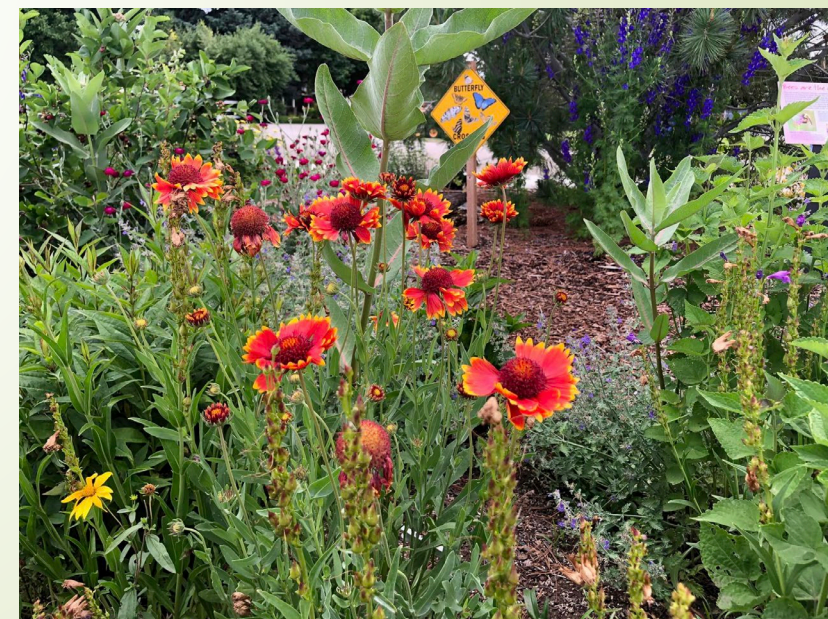
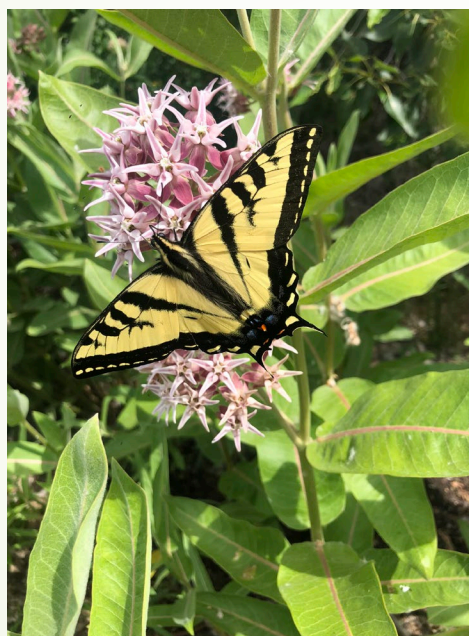
Western Idaho Fair

34 Agriculture and 18 Horticulture Ribbons
and our third Blue Ribbon Award.





Kleiner Park Pollinator Project



Heroes Park Pollinator Project



Volunteers 40 Hours



Labor Detail 192.5 Hours





➤ FINAL NOTES

➤ Partners and friends

➤ Discovery Park

➤ Treasure Valley
Community
Garden
Cooperative

➤ 2025

➤ Shade
Structure

“Thank you for trusting us with your dirt.”

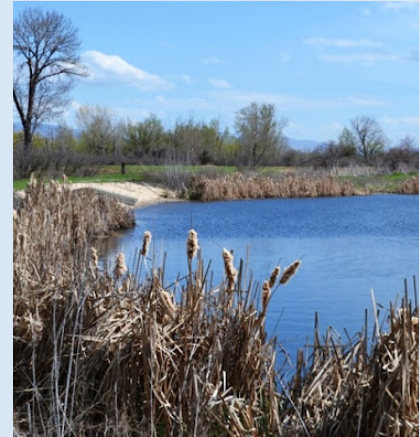


MARGARET ALDAPE PARK

MERIDIAN, IDAHO

LARCH 562

JOSE DURAN

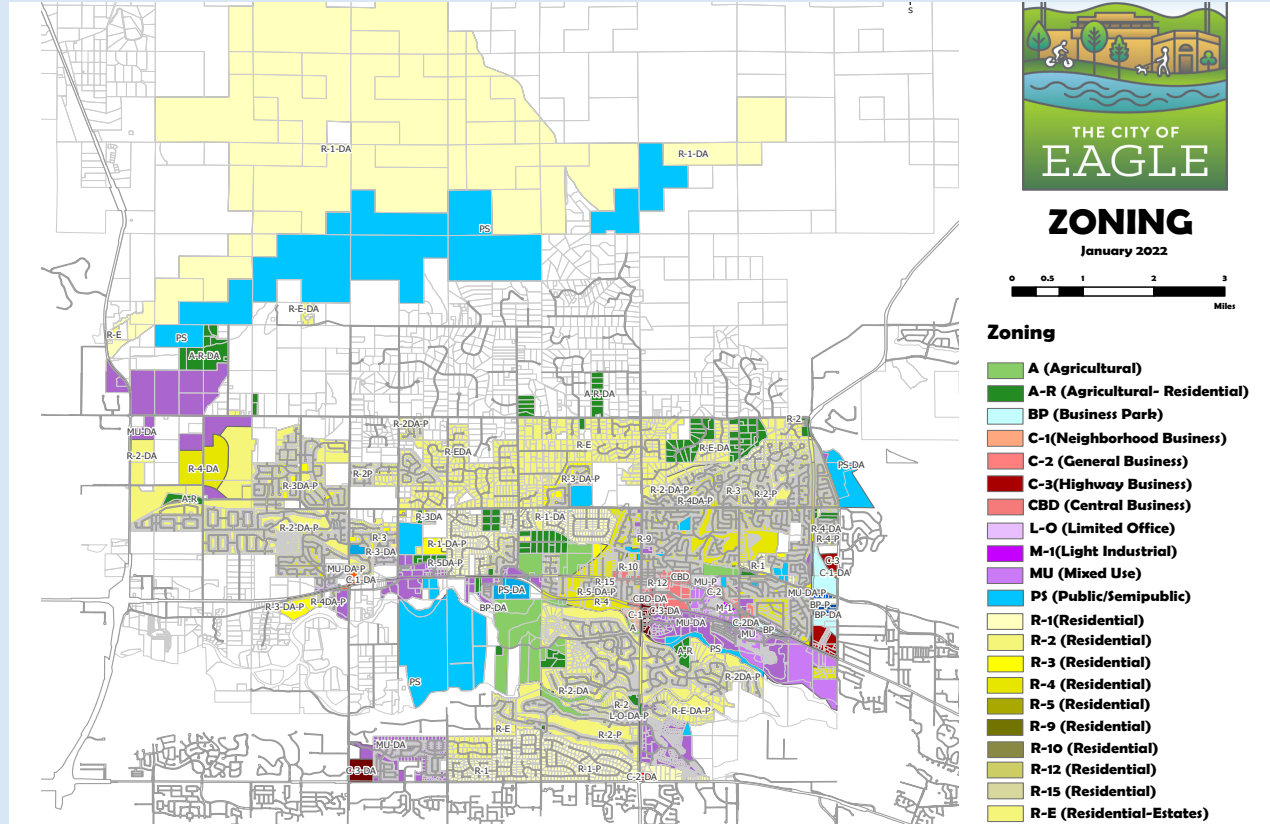


40. *Urdalen* 24. 36. 1941

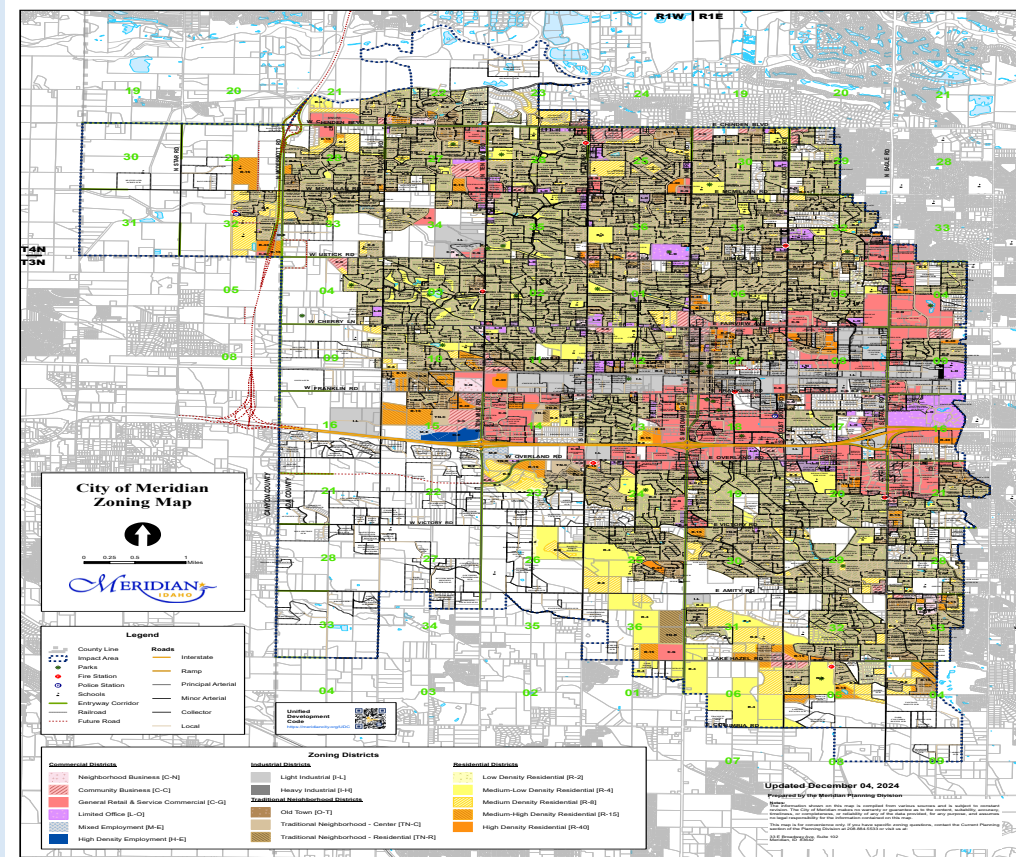


40. *Urdalen* 24. 36. 1941

MARGARET ALDAPE PARK EAGLE ZONING JOSE DURAN



MARGARET ALDAPE PARK MERIDIAN ZONING



	<p>Without Base Flood Elevation (BFE) June 1, 2009 WBC Sea of Oahu: June 01, 02, 03, 04, 05, 06, 07, 08, 09, 10, 11, 12, 13, 14, 15, 16, 17, 18, 19, 20, 21, 22, 23, 24, 25, 26, 27, 28, 29, 30, 31, 32, 33, 34, 35, 36, 37, 38, 39, 40, 41, 42, 43, 44, 45, 46, 47, 48, 49, 50, 51, 52, 53, 54, 55, 56, 57, 58, 59, 60, 61, 62, 63, 64, 65, 66, 67, 68, 69, 70, 71, 72, 73, 74, 75, 76, 77, 78, 79, 80, 81, 82, 83, 84, 85, 86, 87, 88, 89, 90, 91, 92, 93, 94, 95, 96, 97, 98, 99, 100, 101, 102, 103, 104, 105, 106, 107, 108, 109, 110, 111, 112, 113, 114, 115, 116, 117, 118, 119, 120, 121, 122, 123, 124, 125, 126, 127, 128, 129, 130, 131, 132, 133, 134, 135, 136, 137, 138, 139, 140, 141, 142, 143, 144, 145, 146, 147, 148, 149, 150, 151, 152, 153, 154, 155, 156, 157, 158, 159, 160, 161, 162, 163, 164, 165, 166, 167, 168, 169, 170, 171, 172, 173, 174, 175, 176, 177, 178, 179, 180, 181, 182, 183, 184, 185, 186, 187, 188, 189, 190, 191, 192, 193, 194, 195, 196, 197, 198, 199, 200, 201, 202, 203, 204, 205, 206, 207, 208, 209, 210, 211, 212, 213, 214, 215, 216, 217, 218, 219, 220, 221, 222, 223, 224, 225, 226, 227, 228, 229, 230, 231, 232, 233, 234, 235, 236, 237, 238, 239, 240, 241, 242, 243, 244, 245, 246, 247, 248, 249, 250, 251, 252, 253, 254, 255, 256, 257, 258, 259, 260, 261, 262, 263, 264, 265, 266, 267, 268, 269, 270, 271, 272, 273, 274, 275, 276, 277, 278, 279, 280, 281, 282, 283, 284, 285, 286, 287, 288, 289, 290, 291, 292, 293, 294, 295, 296, 297, 298, 299, 300, 301, 302, 303, 304, 305, 306, 307, 308, 309, 310, 311, 312, 313, 314, 315, 316, 317, 318, 319, 320, 321, 322, 323, 324, 325, 326, 327, 328, 329, 330, 331, 332, 333, 334, 335, 336, 337, 338, 339, 340, 341, 342, 343, 344, 345, 346, 347, 348, 349, 350, 351, 352, 353, 354, 355, 356, 357, 358, 359, 360, 361, 362, 363, 364, 365, 366, 367, 368, 369, 370, 371, 372, 373, 374, 375, 376, 377, 378, 379, 380, 381, 382, 383, 384, 385, 386, 387, 388, 389, 390, 391, 392, 393, 394, 395, 396, 397, 398, 399, 400, 401, 402, 403, 404, 405, 406, 407, 408, 409, 410, 411, 412, 413, 414, 415, 416, 417, 418, 419, 420, 421, 422, 423, 424, 425, 426, 427, 428, 429, 430, 431, 432, 433, 434, 435, 436, 437, 438, 439, 440, 441, 442, 443, 444, 445, 446, 447, 448, 449, 450, 451, 452, 453, 454, 455, 456, 457, 458, 459, 460, 461, 462, 463, 464, 465, 466, 467, 468, 469, 470, 471, 472, 473, 474, 475, 476, 477, 478, 479, 480, 481, 482, 483, 484, 485, 486, 487, 488, 489, 490, 491, 492, 493, 494, 495, 496, 497, 498, 499, 500, 501, 502, 503, 504, 505, 506, 507, 508, 509, 510, 511, 512, 513, 514, 515, 516, 517, 518, 519, 520, 521, 522, 523, 524, 525, 526, 527, 528, 529, 530, 531, 532, 533, 534, 535, 536, 537, 538, 539, 540, 541, 542, 543, 544, 545, 546, 547, 548, 549, 550, 551, 552, 553, 554, 555, 556, 557, 558, 559, 560, 561, 562, 563, 564, 565, 566, 567, 568, 569, 570, 571, 572, 573, 574, 575, 576, 577, 578, 579, 580, 581, 582, 583, 584, 585, 586, 587, 588, 589, 590, 591, 592, 593, 594, 595, 596, 597, 598, 599, 600, 601, 602, 603, 604, 605, 606, 607, 608, 609, 610, 611, 612, 613, 614, 615, 616, 617, 618, 619, 620, 621, 622, 623, 624, 625, 626, 627, 628, 629, 630, 631, 632, 633, 634, 635, 636, 637, 638, 639, 640, 641, 642, 643, 644, 645, 646, 647, 648, 649, 650, 651, 652, 653, 654, 655, 656, 657, 658, 659, 660, 661, 662, 663, 664, 665, 666, 667, 668, 669, 670, 671, 672, 673, 674, 675, 676, 677, 678, 679, 680, 681, 682, 683, 684, 685, 686, 687, 688, 689, 690, 691, 692, 693, 694, 695, 696, 697, 698, 699, 700, 701, 702, 703, 704, 705, 706, 707, 708, 709, 710, 711, 712, 713, 714, 715, 716, 717, 718, 719, 720, 721, 722, 723, 724, 725, 726, 727, 728, 729, 730, 731, 732, 733, 734, 735, 736, 737, 738, 739, 740, 741, 742, 743, 744, 745, 746, 747, 748, 749, 750, 751, 752, 753, 754, 755, 756, 757, 758, 759, 760, 761, 762, 763, 764, 765, 766, 767, 768, 769, 770, 771, 772, 773, 774, 775, 776, 777, 778, 779, 780, 781, 782, 783, 784, 785, 786, 787, 788, 789, 790, 791, 792, 793, 794, 795, 796, 797, 798, 799, 800, 801, 802, 803, 804, 805, 806, 807, 808, 809, 810, 811, 812, 813, 814, 815, 816, 817, 818, 819, 820, 821, 822, 823, 824, 825, 826, 827, 828, 82</p>
--	--

[illegible]

Map Projection:
GCS, NAD83, Reference System 2880
Vertical Datum: NAVD83

For information about the specific vertical datum for elevation features, dimensions, or vertical measurements used to create this map, please see the Insurance Study (IS) Report for your community at <https://ins.fema.gov>

1 inch = 1,000 feet **1:12,000**

0 500 1,000 2,000 3,000 4,000 Feet

0 105 210 420 630 840 Meters



PANEL 140 OF 800

Panel Contains
COMMUNITY
CANYON COUNTY
CITY OF MERIDIA
ADA COUNTY
CITY OF STAN

1400
1401

MAP NUMBER
16001C0140J
EFFECTIVE DATE
June 19, 2020

MARGARET ALDAPE PARK

GOALS FOR THE PARK



**BASQUE HERITAGE ART AND INTERPERATIVE
DISPLAYS FEATURED AROUND THE PARK**



**INCLUSIVITY AND DIVERSITY OF RECREATIONAL
SPORTS**



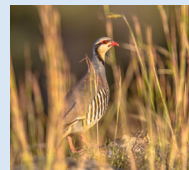
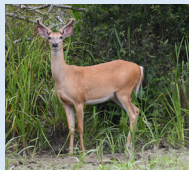
DEVELOP AN INTENTIONAL ENTRY WAY



**CREATE A PATHWAY SYSTEM TO DEVELOP
MERIDIANS FIRST ACCESS OF THE BOISE RIVER
GREENBELT**



**LIMIT THE DISRUPTION OF WILDLIFE CURRENTLY
LIVING IN THE PARK AND ENHANCE WILDLIFE
HABITAT TO ATTRACT MORE BIRDS AND WILD-
LIFE**



**DEVELOP ACCESS TO BOTH THE BOISE RIVER
AND THE ALDAPE POND**



MARGARET ALDAPE PARK RECREATIONAL ACTIVITIES



ACTIVE TRANSPORTATION



The park will hold many multipurpose paths that will promote active transportation such as walking or biking. This engages the community to gain access to the entire park.

KAYAKING



Kayaking will be a top recreational activity. As the pond being a focal point of the park, this will allow visitors to enjoy the soothing waters of both the Boise River and Aldape Pond

FISHING



Pond to be stocked with fish from the Boise River such as Rainbow Trout and Small & Large Mouth Bass

DISK GOLF



Disk golf will be featured on the northern end of the park. This sport will provide limited disruption to the natural area close to the river front.



MARGARET ALDAPE PARK

BASQUE HERITAGE AND INTERPRATIVE DISPLAYS



TRAIL DISPLAYS



- Incorporate Basque art around the park to commemorate the Aldape family heritage.
- Develop a system of way finding signs around the park to display where you are at in such a large park

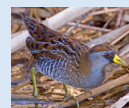
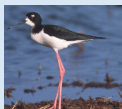
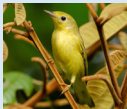
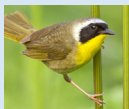
BASQUE ART





MARGARET ALDAPE PARK

LIMIT THE DISRUPTION OF WILDLIFE



Bird Watching

Osprey, Yellow Warbler, Yellow-rumped Warbler, Common Yellowthroat, Swainson's Hawk, Red-tailed Hawk, Northern Harrier, American Kestrel, Black-necked Stilt, Wilson's Phalarope, Wilson's Snipe, Killdeer, Great Egret, Sora, Western Kingbird, Black-billed Magpie, Mallard, Blue-winged Teal, Northern Shoveler, Loggerhead Shrike, Tree Swallow, Barn Swallow, and Cliff Swallow.



MARGARET ALDAPE PARK INTENTIONAL ENTRY WAY

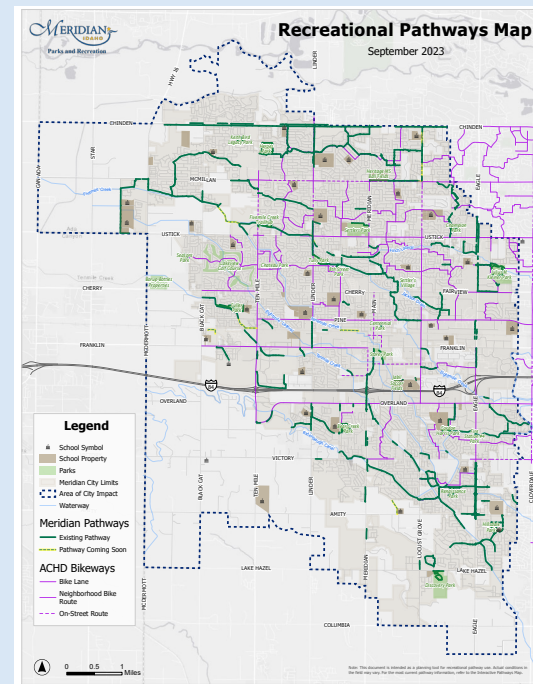
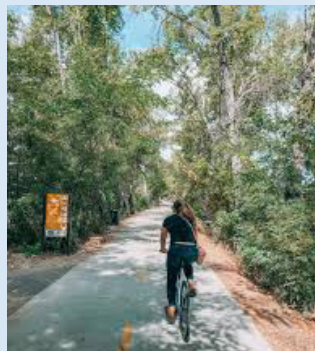




**MARGARET ALDAPE PARK
DEVELOP MERIDIANS ACCESS TO THE BOISE
RIVER GREENBELT**



- Develop a pathway system for the Boise River in Meridian
- Allow connections to run through Hwy 20/26 or Linder Road to connect to existing paths and trails
- Connect City of Star, City of Eagle and City of Meridian in a cohesive greenbelt system





MARGARET ALDAPE PARK DEVELOP ACCESS TO BOTH THE POND AND BOISE RIVER



BOISE RIVER



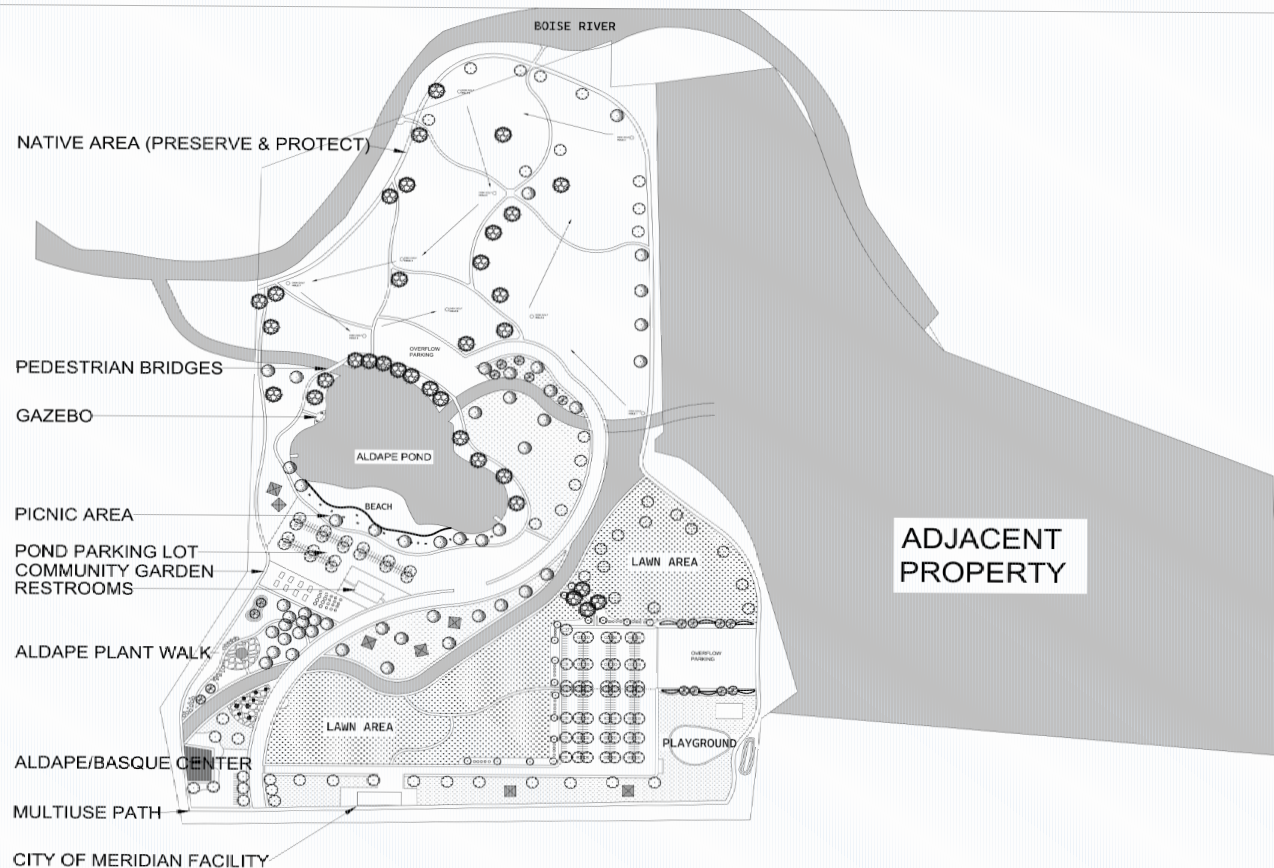
ALDAPE POND



MARGARET ALDAPE PARK FIRST CONCEPTUAL MASTER PLAN



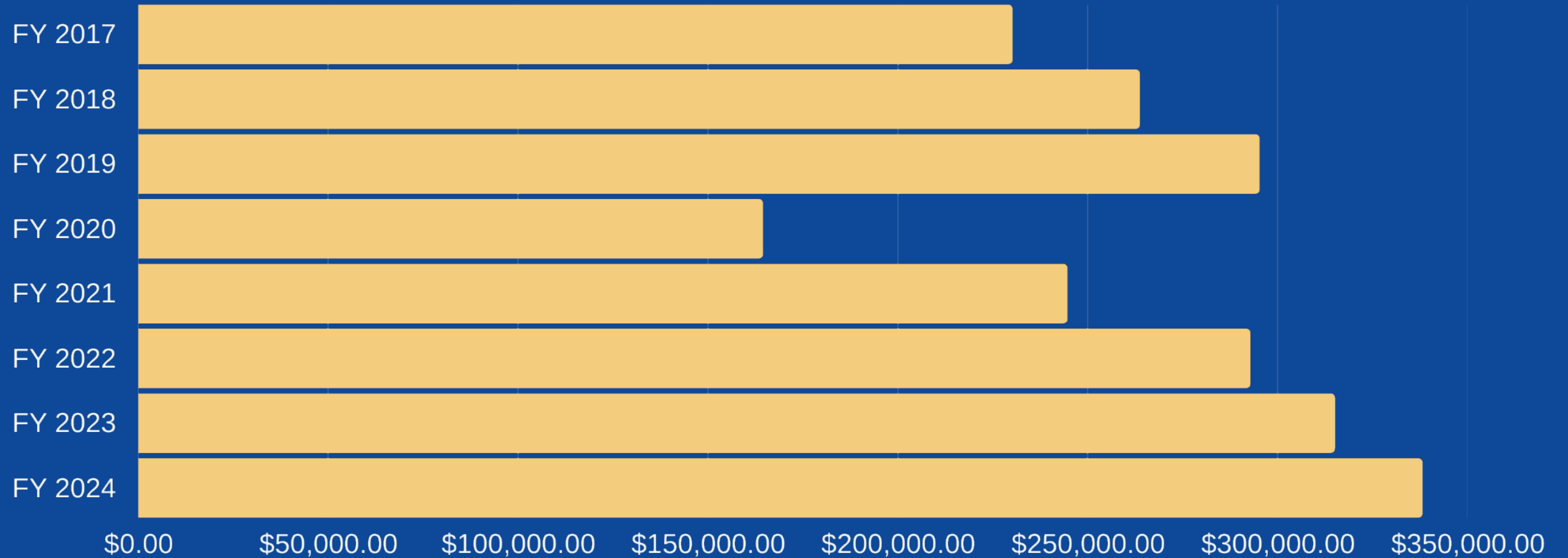
MARGARET ALDAPE PARK MASTER PLAN



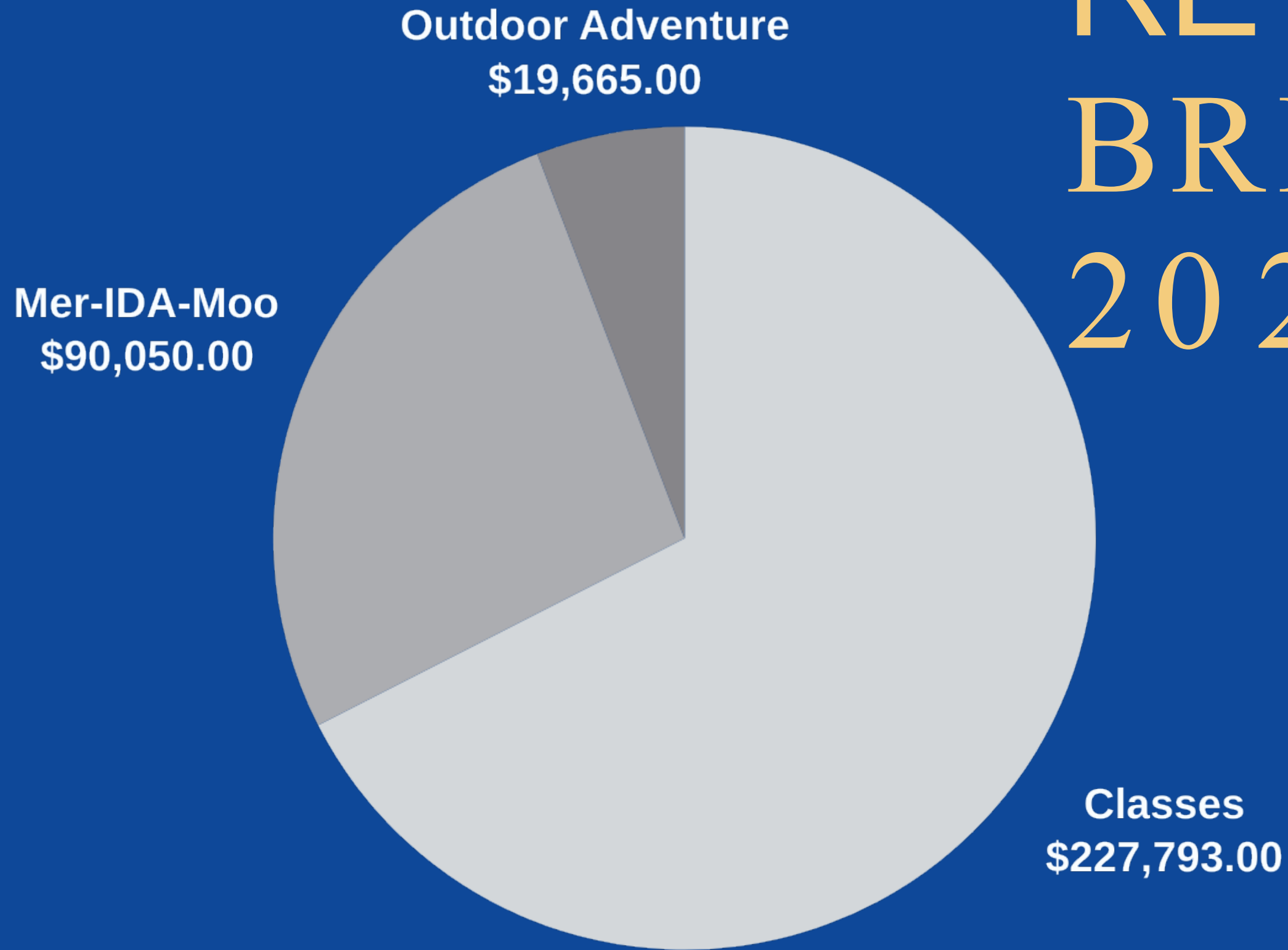
CLASSES & CAMPS

Parks & Recreation Commission
March 12, 2025

REVENUE HISTORY



REVENUE BREAKDOWN 2024



2024 CLASS/CAMP SUCCESSES

CAMP MER -IDA -MOO

2024-752 kids attended
camp.

June 3 - August 2

18 trips to the pool

18 trips to the park

14 field trips

OUTDOOR ADVENTURE

June 3 - August 2

91 kids attend camp

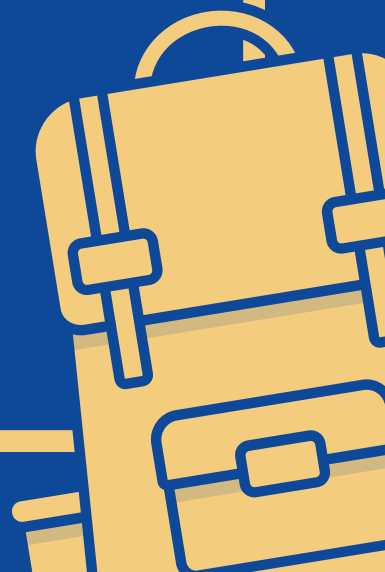
9 weeks of camp

76 kids attended

2024 CLASSES

Offered over 800 classes

Over 4,200 people
participated in classes





WHAT DOES 2025 LOOK LIKE?



RUNNING AT 2 SITES (SCHOOLS)

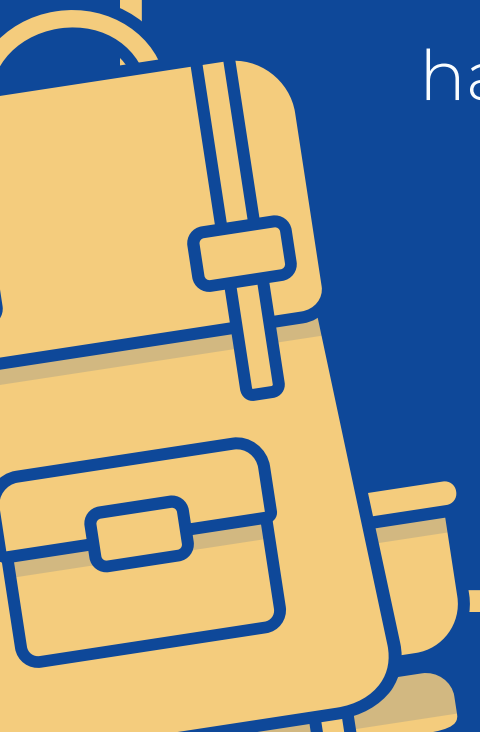
Will add additional schools if
have adequate staff

ACTIVITIES

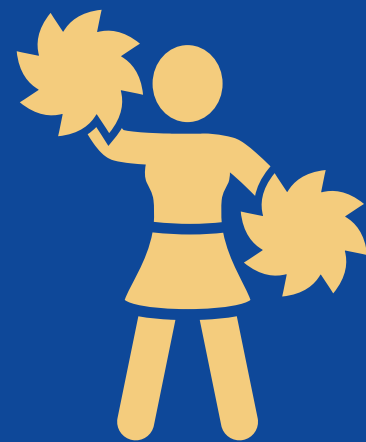
Tennis, youth art, photography
Pickleball, line dancing, gymnastics
Martial arts, fencing, & more

OUTDOOR ADVENTURE

Rafting, Bogus Basin,
Swimming



What
classes do
we offer?





LOCATIONS OF CLASSES



MERIDIAN
COMMUNITY CENTER



MERIDIAN
HOMECOURT BAY 5

LOCATIONS OF CLASSES CONT.



MERIDIAN
HOMECOURT BAY 6



MERIDIAN
POOL

Meridian Pool - Availability

JUNE 1 2025 - AUGUST 31 2025

OCCUPIED TIMES

	Main Room					
	Monday	Tuesday	Wednesday	Thursday	Friday	Saturday
8am	8:00	8:00	8:00	8:00	8:00	
9am						
10am	11:00	11:00	11:00	11:00	11:00	10:00
11am						
12pm	12:00	12:00	12:00	12:00	12:00	
1pm	2:00	2:00	2:00	2:00	2:00	
2pm						
3pm			3:00 4:00			3:00
4pm		4:30		4:30	Workshops Offered Sporadically	Workshops Offered Sporadically
5pm	5:00	5:30		5:30		
6pm	6:00				If interested please submit date requests	If interested please submit date requests
7pm						
8pm						
9pm						

Meridian Community Center - Availability
June 1 2025 - AUGUST 31 2025

OCCUPIED TIMES

Main Room						
	Monday	Tuesday	Wednesday	Thursday	Friday	Saturday
8am						8:00
9am	9:30	9:30	9:30	9:30	9:30	9:00
10am						10:00
11am						12:00
12pm						
1pm						
2pm						
3pm	3:00	3:00	3:00	3:00	3:00	
4pm		4:00				
5pm		5:00				
6pm		6:30		6:30	6:00	
7pm	7:00		7:00			
8pm	8:00	8:00	8:00	8:00	8:00	
9pm						

Meridian Homecourt Bay 6 - Availability

OCCUPIED TIMES

JUNE 1 2025 - AUGUST 31 2025

	Bay 5						
	Monday	Tuesday	Wednesday	Thursday	Friday	Saturday	Sunday
8am							
9am	9:00	9:00	9:00	9:00	9:00	9:00	
10am							
11am	10:30	10:30	10:30	10:30	10:30	10:30	
12pm							
1pm							
2pm							
3pm							
4pm		4:45		4:45			
5pm	5:30		5:30				
6pm	6:30		6:30				
7pm		7:00					
8pm				8:00			
9pm							

Meridian Homecourt Bay 5 - Availability

OCCUPIED TIMES

JUNE 1 2025 - AUGUST 31 2025

	Bay 5						
	Monday	Tuesday	Wednesday	Thursday	Friday	Saturday	Sunday
8am							8:30
9am	9:00	9:00	9:00	9:00	9:00	9:00	
10am							10:30
11am	11:45		11:45		11:45	11:00	
12pm		1:00		1:00			
1pm							
2pm							
3pm							
4pm		4:30	4:30	4:30			4:00
5pm							
6pm	6:30						7:00
7pm							
8pm	8:30		8:30	8:30			
9pm		10:00					

HOW DO PEOPLE HEAR ABOUT OUR CLASSES?



Activity Guides



Email Blasts



Social Media

CURRENT HAPPENINGS

SUMMER CAMP 2025
2 SITES (DISCOVERY/SIENA)

SUMMER 2025

NEW
COMMUNITY
CENTER!

QUESTIONS? COMMENTS?

Jenna Fletcher: jfletcher@meridiancity.org