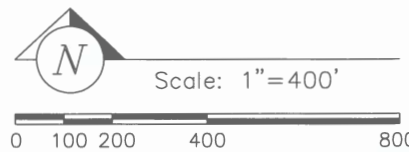
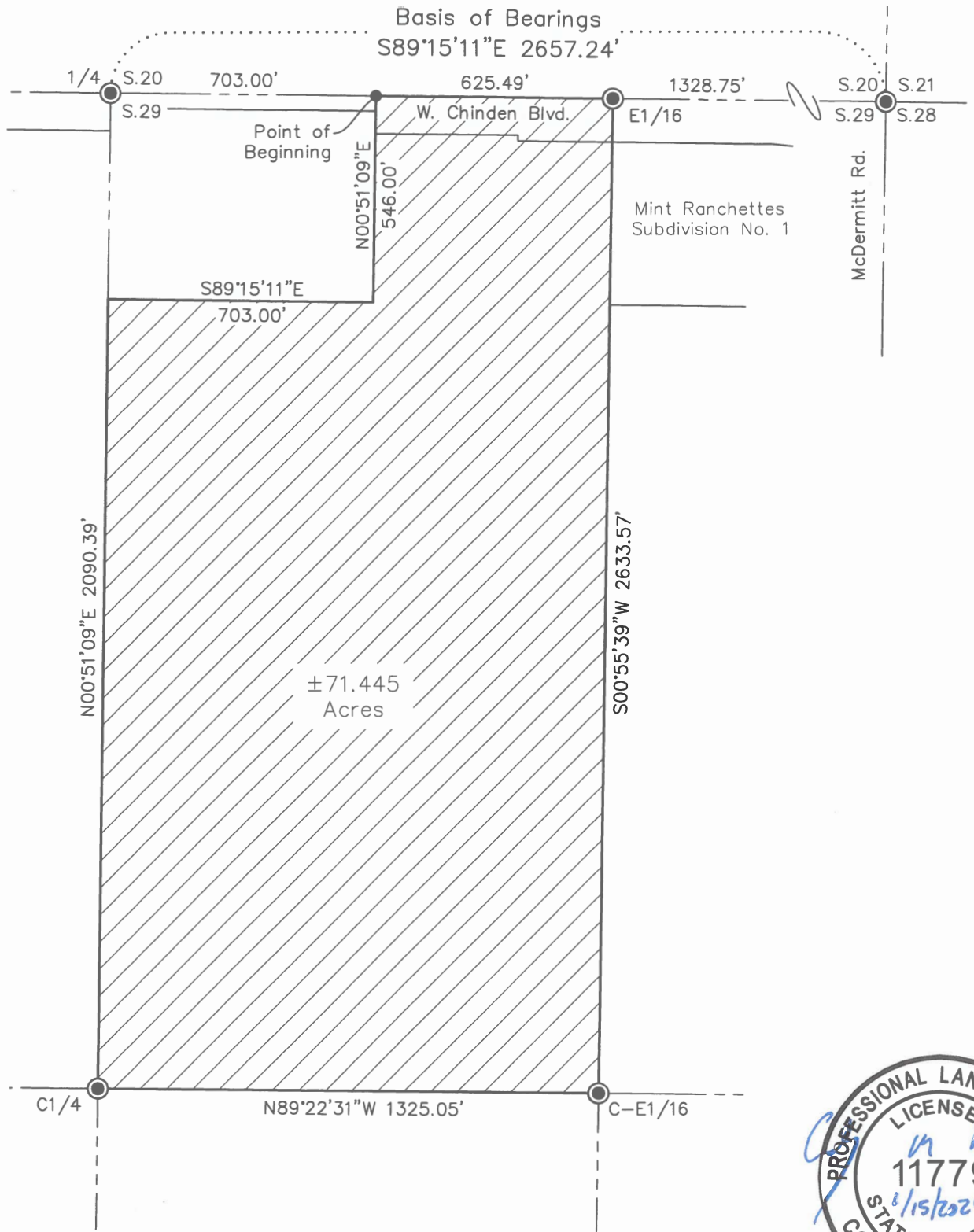


EXHIBIT B



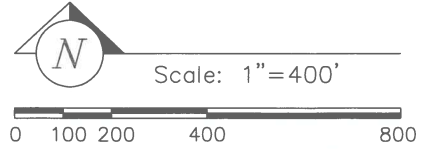
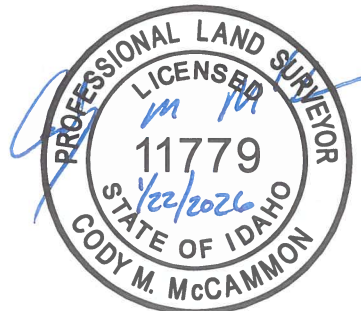
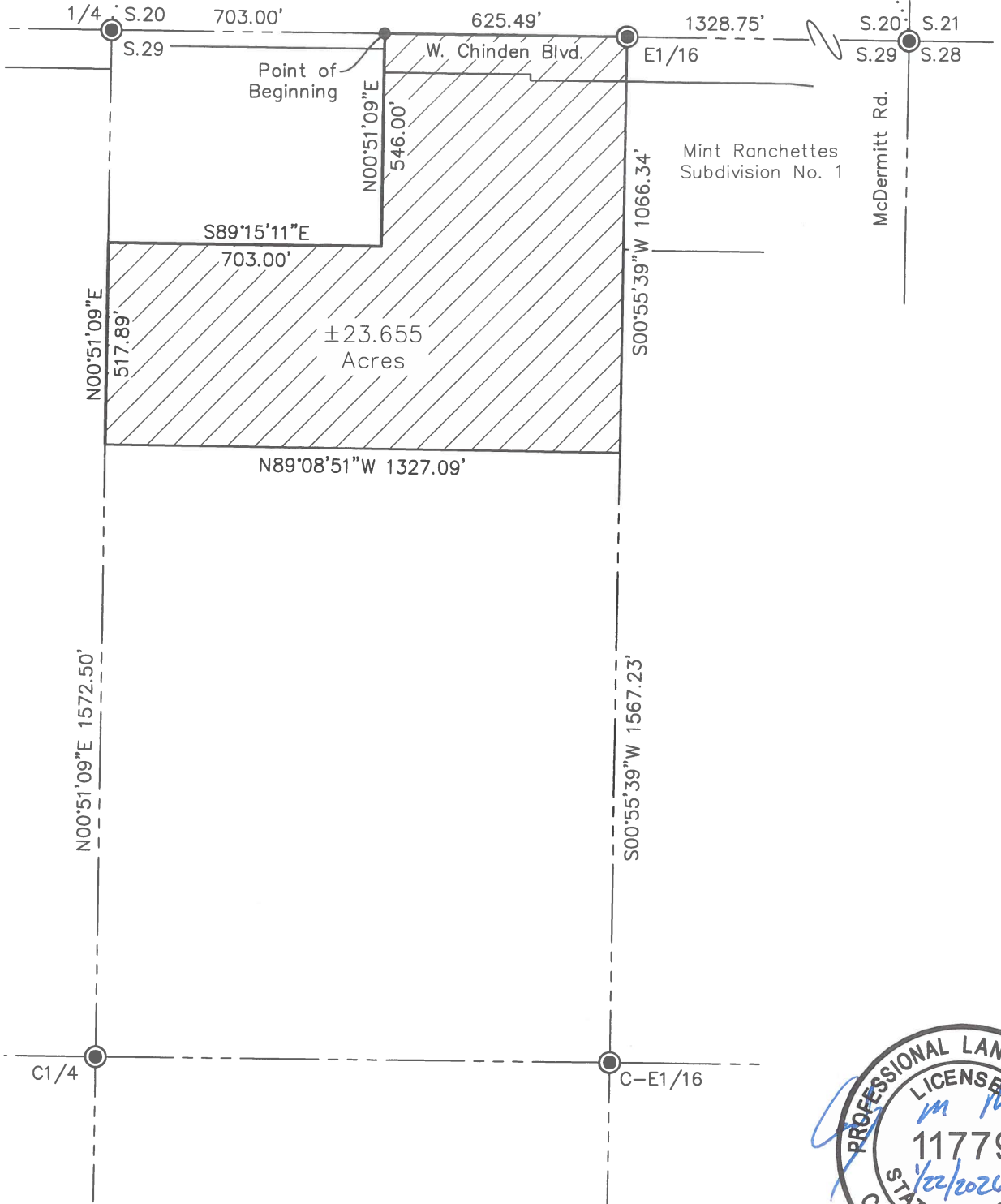
P:\7007 Chinden Blvd 26-011\dwg\Annex Ex.dwg 1/15/2026 7:20:40 PM

 IDAHO SURVEY GROUP, LLC	9939 W. EMERALD ST. BOISE, IDAHO 83704 (208) 846-8570
	Annexion Exhibit for 7007 Chinden Blvd.

A portion of the W1/2 of the NE1/4 of Section 29,
T.4N., R.1W., B.M., Ada County, Idaho

Job No. 26-011
Sheet No. 1
Dwg. Date 1/15/2026

Basis of Bearings
S89°15'11"E 2657.24'



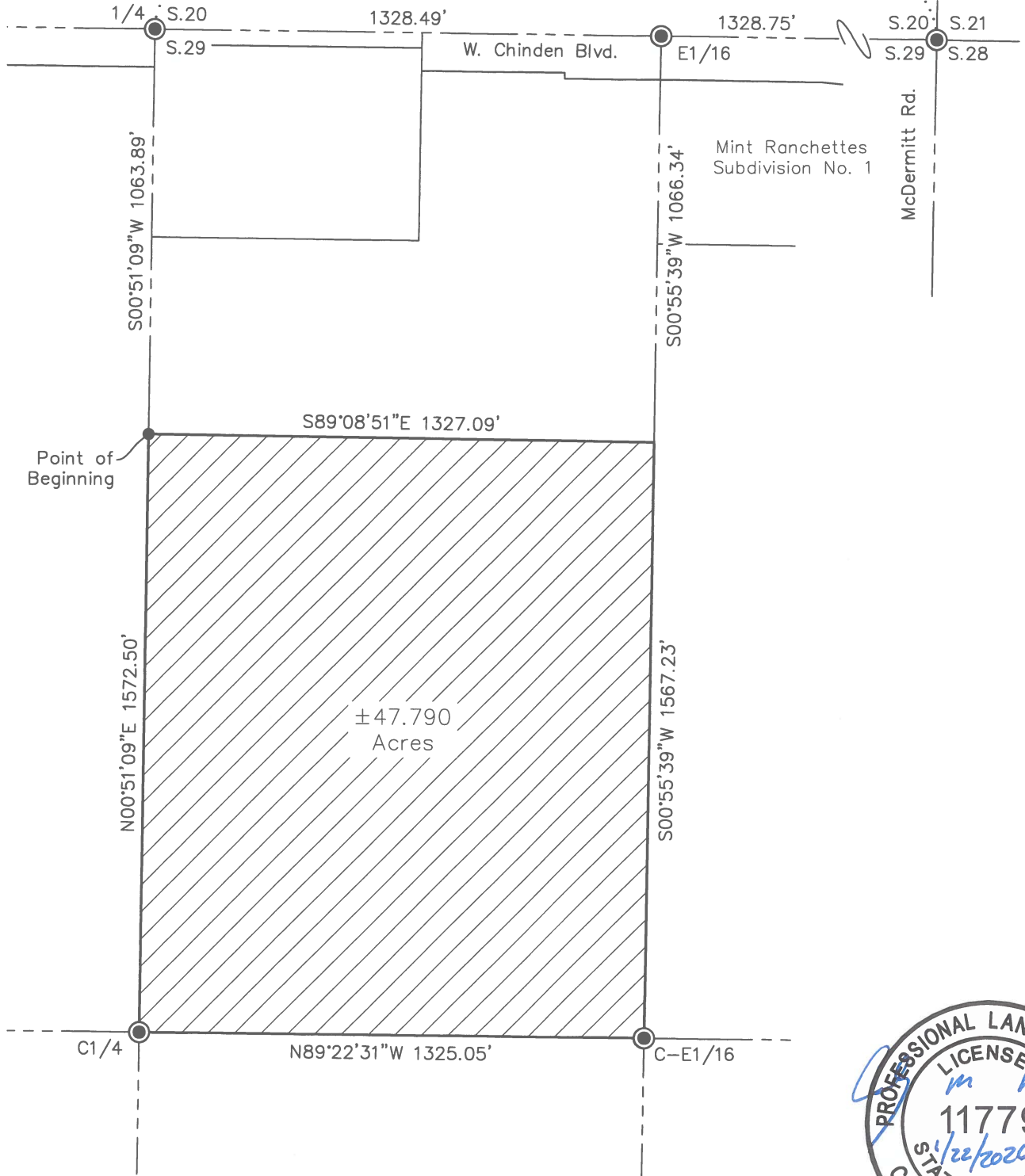
P:\7007 Chinden Blvd 26-011\dwg\C-N Zone Ex.dwg 1/22/2026 11:40:58 AM

	IDAHO SURVEY GROUP, LLC 9939 W. EMERALD ST. BOISE, IDAHO 83704 (208) 846-8570
	Exhibit Map for C-N Zone

A portion of the NW1/4 of the NE1/4 of Section 29,
T.4N., R.1W., B.M., Ada County, Idaho

Job No. 26-011
Sheet No. 1
Dwg. Date 1/22/2026

Basis of Bearings
S89°15'11"E 2657.24'



Scale: 1"=400'



P:\7007 Chinden Blvd 26-011\dwg\R8 Zone Ex.dwg 1/22/2026 5:49:11 PM

IDAHO SURVEY GROUP, LLC
 9939 W. EMERALD ST.
 BOISE, IDAHO 83704
 (208) 846-8570

Exhibit Map for
R-8 Zone

A portion of the W1/2 of the NE1/4 of Section 29,
 T.4N., R.1W., B.M., Ada County, Idaho

Job No.
26-011

Sheet No.
1

Dwg. Date
1/22/2026