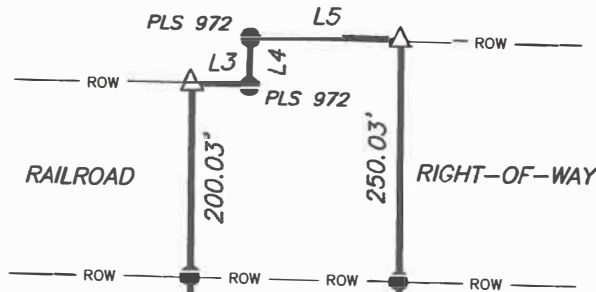


EXHIBIT B

EXHIBIT MAP

ANNEXATION AND REZONE FOR HATCH DESIGN ARCHITECTURE
 A PORTION OF THE SW 1/4 OF THE SE 1/4 OF SECTION 9, T.3N., R.1E., B.M.
 COUNTY OF ADA — STATE OF IDAHO

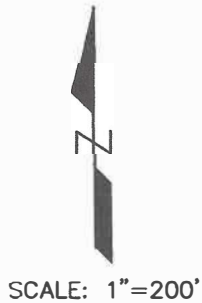


LINE TABLE

| LINE | BEARING | DISTANCE |
|------|---------------|----------|
| L1 | N 00°34'57" E | 42.00' |
| L2 | S 00°34'55" W | 42.00' |
| L3 | S 88°27'42" E | 59.31' |
| L4 | N 01°41'28" E | 50.00' |
| L5 | S 88°27'42" E | 153.84' |

LEGEND

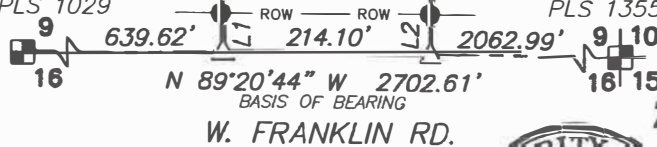
- ANNEX AND REZONE
- BOUNDARY LINE
- PARCEL LINE
- ROW
- RIGHT-OF-WAY
- SECTION LINE
- FOUND ALUMINUM CAP IN ASPHALT
- FOUND 5/8" IRON PIN
- CALCULATED POINT



SEYAM EAST SUBDIVISION
 N 00°34'57" E 1248.15'
 1006.12'
 1002.82'
 S 00°34'55" W 1294.86'
 S1109438871
 6.304 AC.

1/4 CORNER
 CP&F No. 113006165
 3" ALUMINUM CAP IN
 MONUMENT WELL,
 PLS 1029

SECTION CORNER
 CP&F No. 11084522
 2 1/2" ALUMINUM
 CAP IN ASPHALT,
 PLS 13551



Accurate
 Surveying &
 Mapping

1520 W. Washington
 Boise, Idaho 83702
 (208) 488-4227

www accuratesurveyors.com

DATE: JUNE 2022

JOB 19-274