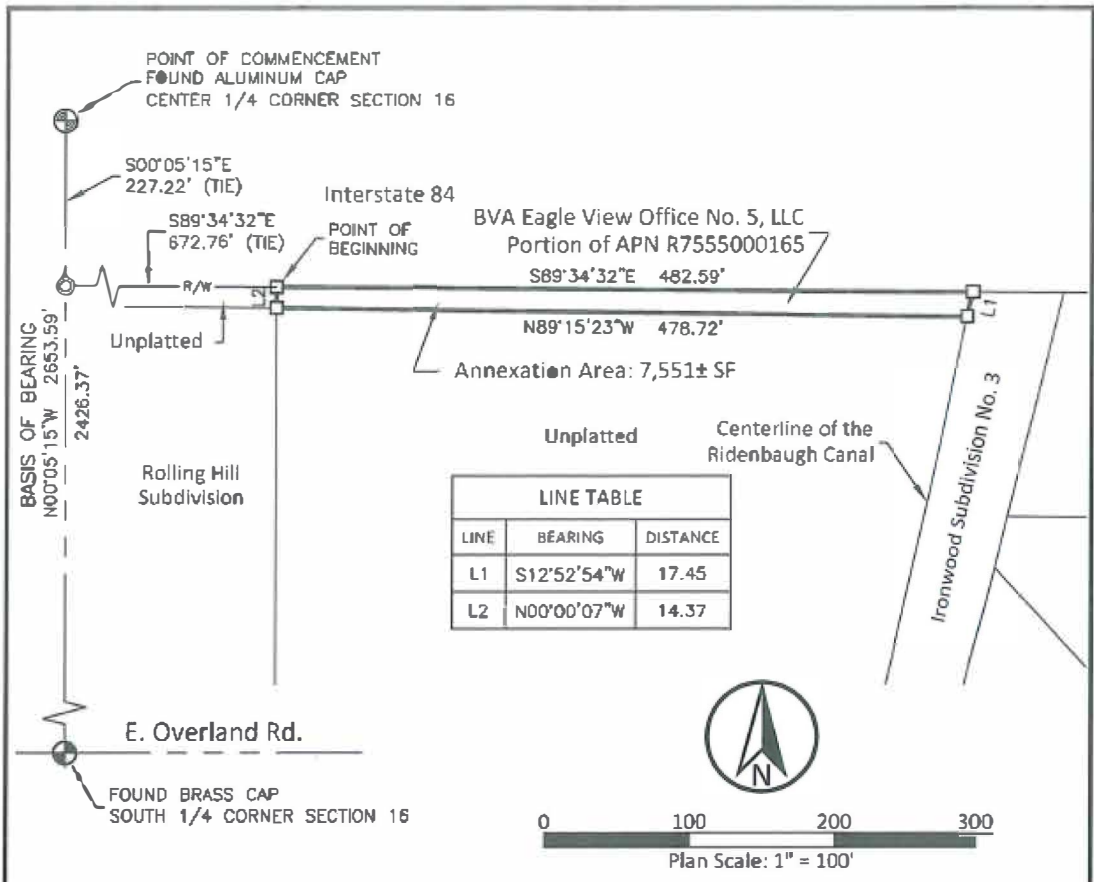


# EXHIBIT B



| LINE TABLE |             |          |
|------------|-------------|----------|
| LINE       | BEARING     | DISTANCE |
| L1         | S12°52'54"W | 17.45    |
| L2         | N00°00'07"W | 14.37    |

### Legend

- FOUND ALUMINUM CAP
- FOUND BRASS CAP
- FOUND 5/8-INCH REBAR
- CALCULATED POINT
- ANNEXATION BOUNDARY LINE
- ADJACENT LOT LINE
- SECTION LINE
- RIGHT-OF-WAY LINE

**km**  
ENGINEERING  
5725 NORTH DISCOVERY WAY  
BOISE, IDAHO 83713  
PHONE (208) 689-6939  
kmengr@ip.com

DATE: December 2022  
PROJECT: 20-219  
SHEET: 1 OF 1

### Exhibit B - Annexation Eagle View Landing

A Portion of the NW 1/4 of the SE 1/4 of Section 16  
T3N., R1E., B.M., Ada County, Idaho

P:\20-219\GDS\LRV\EVS\SUBS\20-219 ANNEXATION REMAINDER 231216.DWG, AARON BALLARD, 12/16/2022, ESTUD0907.PLC, ---