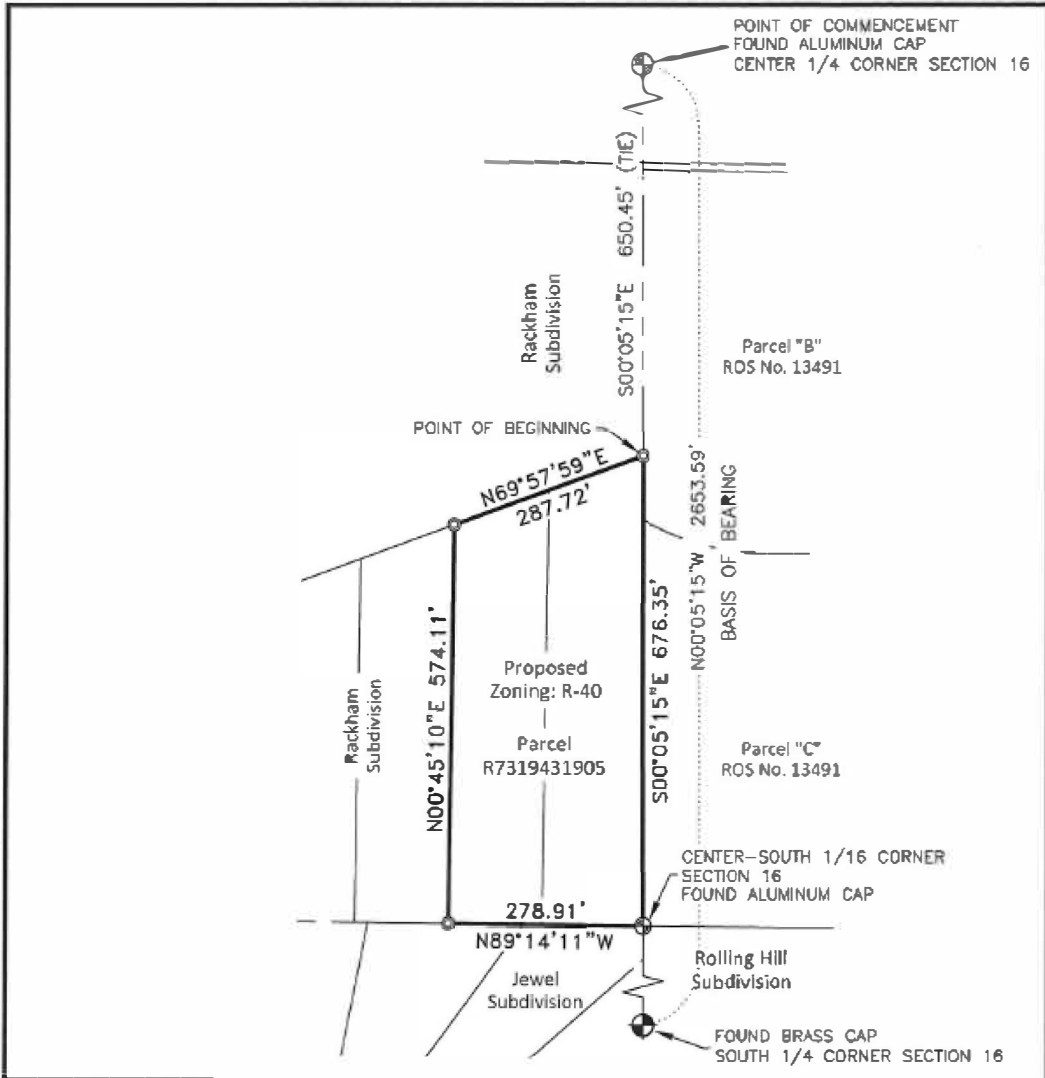


# EXHIBIT B



P:\2021\151\LOCAL SURVEY\REVIEWS\2021\151\LOT 18.B.19 REZONE TO R-40.DWG, TERRY ZIMMERMAN, 11/17/2022, DWG TO PDF.PC3, ---

**km**  
**ENGINEERING**  
 5725 NORTH DISCOVERY WAY  
 BOISE, IDAHO 83733  
 PHONE (208) 539-4939  
 kmenglp@km.com

DATE:	November 2022
PROJECT:	20-219
SHEET:	1 OF 1



**Exhibit B - Rezone to R-40  
 Rackham Subdivision**

Lots 18 and 19, Block 1 of Rackham Subdivision situated in the  
 NE 1/4 of the SW 1/4 of Sec. 16, T3N., R1E., B.M., Ada County, Idaho