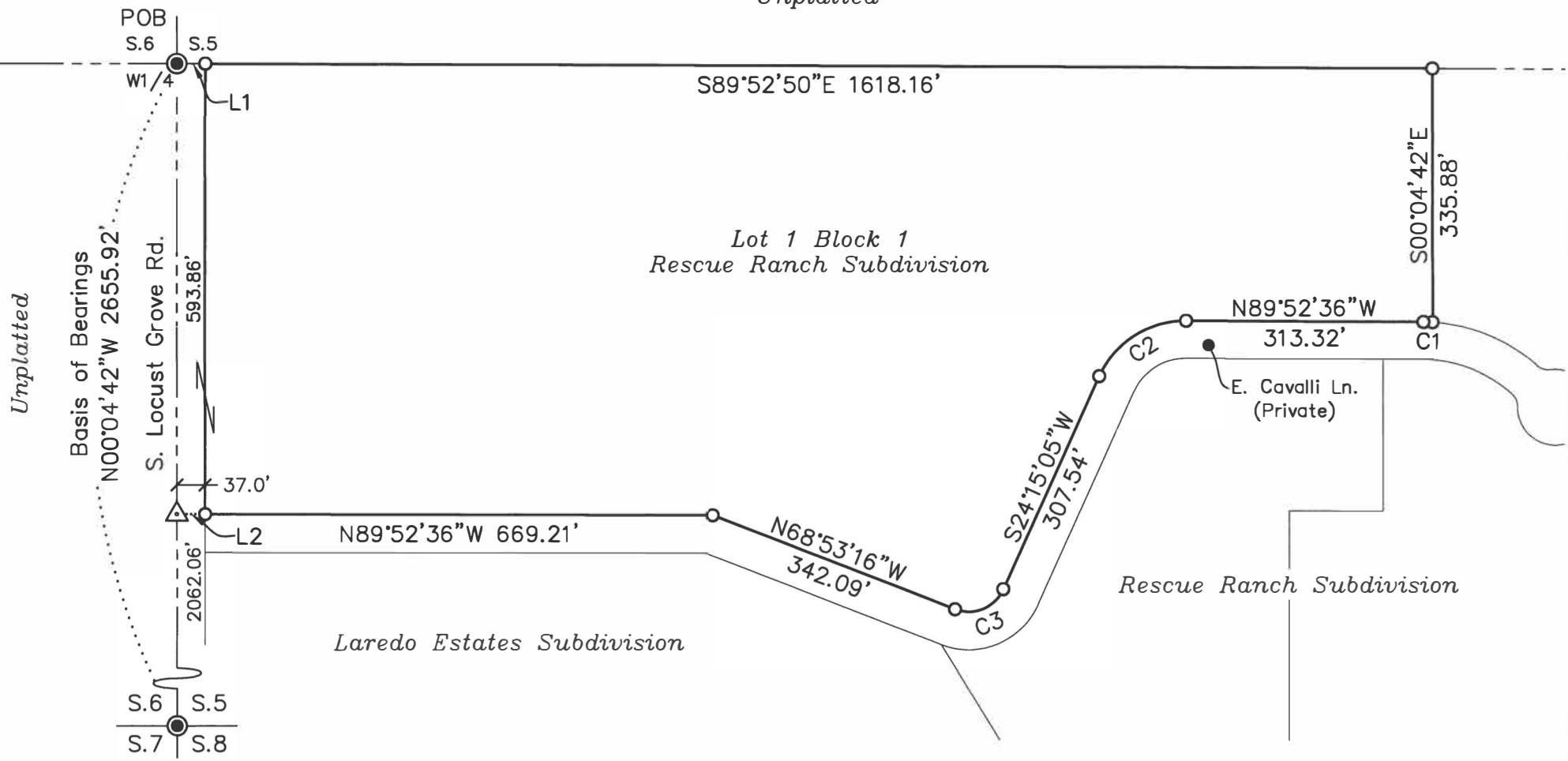


**EXHIBIT B**

*Unplatted*



*Unplatted*

Basis of Bearings  
N00°04'42"W 2655.92'

Lot 1 Block 1  
Rescue Ranch Subdivision

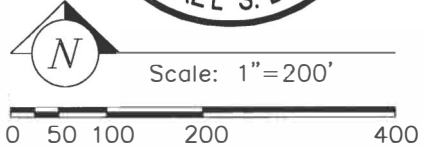
Laredo Estates Subdivision

Rescue Ranch Subdivision



Line Table		
Line	Bearing	Length
L1	S89°52'50"E	37.00'
L2	S89°55'18"W	37.00'

Curve Table					
Curve	Length	Radius	Delta	Chord Bearing	Chord Distance
C1	12.01'	225.00'	3°03'27"	N88°20'52"W	12.01'
C2	143.71'	125.00'	65°52'19"	S57°11'14"W	135.93'
C3	75.80'	50.00'	86°51'39"	S67°40'54"W	68.75'

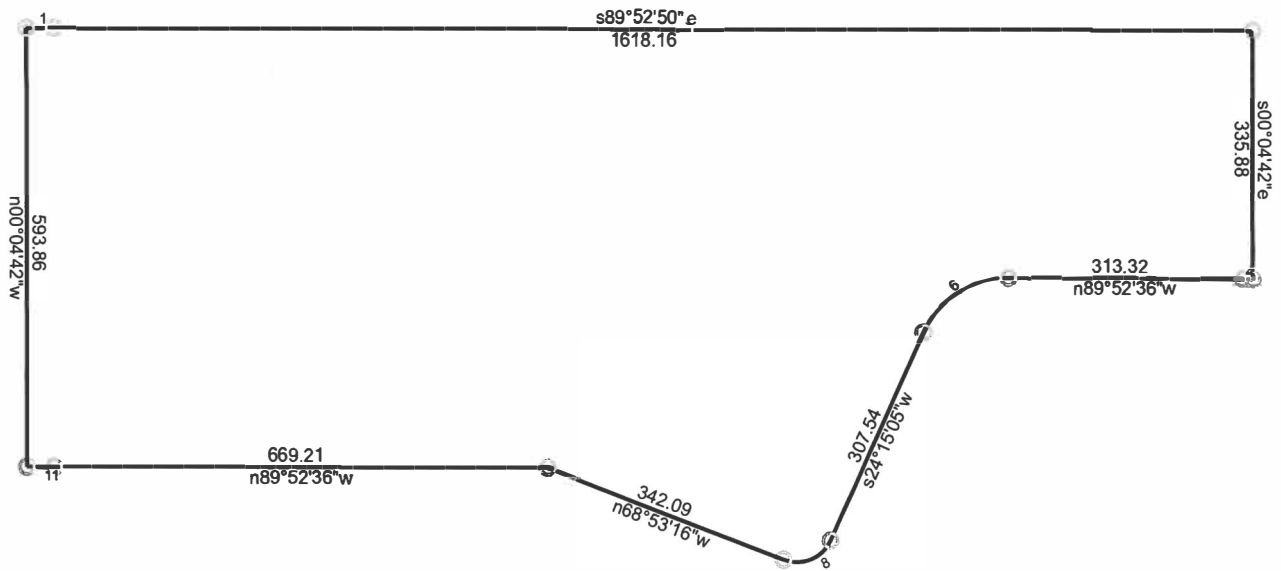


P:\Hadler Subdivision Topo 21-360\dwg\21-360 Hadler Exhibit\_Annexation.dwg 7/13/2022 4:38:36 PM

**IDAHO SURVEY GROUP, LLC**  
 9955 W. EMERALD ST.  
 BOISE, IDAHO 83704  
 (208) 846-8570

Exhibit \_\_\_\_ Drawing for  
**Hadler Subdivision Annexation**  
 Situated in the North Half of the Southwest Quarter of Section 5,  
 T.2N., R.1E., B.M., Ada County, Idaho.

Job No.  
21-360  
 Sheet No.  
**1**  
 Dwg. Date  
7/13/2022



# Hadler Subdivision Annexation Closure

7/13/2022

Scale: 1 inch= 250 feet

File:

Tract 1: 20.5051 Acres, Closure: n51.0146e 0.01 ft. (1/524069), Perimeter=4486 ft.

- |   |                     |
|---|---------------------|
| 01 s89.5250e 37   | 10 n89.5236w 669.21 |
| 02 s89.5250e 1618.16                                    | 11 s89.5518w 37     |
| 03 s00.0442e 335.88                                     | 12 n00.0442w 593.86 |
| 04 Lt, r=225.00, delta=003.0327, chord=n88.2052w 12.01  |                     |
| 05 n89.5236w 313.32                                     |                     |
| 06 Lt, r=125.00, delta=065.5219, chord=s57.1114w 135.93 |                     |
| 07 s24.1505w 307.54                                     |                     |
| 08 Rt, r=50.00, delta=086.5139, chord=s67.4054w 68.75   |                     |
| 09 n68.5316w 342.09                                     |                     |