



PARKS & RECREATION COMMISSION

MEETING - MINUTES

City Council Chambers, 33 East Broadway Avenue, Meridian, Idaho
Wednesday, October 8, 2025 at 4:00 PM

The Meridian Parks & Recreation Commission is a volunteer citizens' group that is created and empowered to advise the City on issues relating to park facilities and recreation programs of the City. Their mission is to gather input from staff and other qualified personnel on issues relating to the creation and design of public parks and open spaces; to listen to public input; and to provide advice and recommendations on parks and recreation related matters to the Mayor and City Council.

ROLL-CALL ATTENDANCE

Commission Chair Don Gelsomino called the meeting to order at approximately 4:29 p.m.
MPR Administrative Assistant II Rachel Myers took roll-call attendance as follows:

<u>X</u> Dom Gelsomino, Chair	<u>O</u> Brienne Sandow, Vice Chair
<u>X</u> Jennifer Bobo	<u>X</u> Terry Dennington
<u>X</u> Mandi Roberts	<u>X</u> John Nesmith
<u>O</u> Jo Greer	<u>X</u> Alan Helms
___ (Vacant)	

Others present were: MPR Department staff—Parks and Recreation Director Steve Siddoway, Recreation Superintendent Garrett White, Park Superintendent Mike Barton, City Arborist Kyle Yorita, Pathways Project Manager Kim Warren, Administrative Assistant II Rachel Myers, Marketing Coordinator Shelly Houston, Deputy City Attorney Emily Kane, and ADA County Operations Senior Project Manager Joshua Brown.

ADOPTION OF THE AGENDA

Commission Chair Dom Gelsomino asked for a motion to adopt the evening's agenda. Commissioner Mandi Roberts moved to adopt the agenda. Commissioner Alan Helms seconded. All were in favor of the motion.

APPROVAL OF THE MINUTES

- 1. August 13, 2025 Regular Meeting**
- 2. September 10, 2025 Special Meeting**

Commission Chair Dom Gelsomino asked for a motion to adopt the minutes as presented.

Commissioner John Nesmith moved to adopt the minutes. Alan Helms seconded. All were in favor of the motion.

ANNOUNCEMENTS

3. Upcoming Events

Shelly Houston, Parks and Recreation Marketing Coordinator presented the upcoming events.

- A. Rake Up Meridian – Registration is open until October 24th
- B. Recycle the Fall – Leaf bins will be placed in Fuller Park, Gordon Harris Park, Heroes Park, Julius Kleiner Park, Renaissance Park, Settlers Park, Storey Park, and Tully Park from October 21st through December 11th
- C. Trunk or Treat – October 23rd
- D. New Art Exhibit in Initial Point Gallery – November 5th
- E. Rock of Honor Veterans Day Ceremony – November 11th
- F. Santa's Mailbox Placement – November 21st
- G. Christmas Parade and Tree Lighting – December 5th
- H. Children's Winterland Festival – December 13th

The floor was opened for questions.

1. Commissioner Dennington asked how someone could get involved in the Trunk or Treat event.

Shelly responded that those interested should contact Renee White, Special Events Coordinator, for details. Shelly also responded, stating that participants are required to decorate their trunk and distribute candy to attendees.

2. Commissioner Helms asked if there was suggested parking for the Christmas Parade participants.

Shelly stated that there is not an official designated parking area. She advised leaving early to allow time for traffic and to find available parking. Steve Siddoway added that parking at Meridian Pool or Storey Bark Park is often available.

3. Commissioner Helms also inquired about the activities that are held during the Rock of Honor event.

Shelly responded that the event follows a set agenda, typically including a welcome address, invocation by a pastor, keynote speaker, rifle salute, bagpiper performance, and other uplifting patriotic presentations.

No further questions were raised from the Commissioners.

Parks & Recreation Commission Meeting Minutes – October 08, 2025

*Persons desiring accommodation for disabilities related to documents and/or hearings:
Please contact the City Clerk's Office at 888-4433 at least 48 hours prior to the meeting*

OLD BUSINESS ~ NONE

NEW BUSINESS

4. The Park at Expo Idaho Update

Joshua Brown, Ada County Operations Senior Project Manager, presented a PowerPoint presentation to provide an update on The Park at Expo Idaho. The Park at Expo Idaho, formerly Les Bois Park, ended its horse racing operations in 2016 after the Idaho Legislature voted to eliminate “instant racing.” Shortly after, the Ada County Commissioners confirmed that horse racing would not return to the site, the Citizens Advisory Committee recommended that the property be repurposed as an outdoor space for public use. Then the coronavirus happened. During this time, local communities received State and Local Fiscal Recovery Funds. The Ada County Board of Commissioners, the Citizens Advisory Committee, community members, and local stakeholders came together and decided to build a park with those funds.

The Ada County Board of Commissioners issued an RFQ inviting design professionals to help develop a concept for the park. Participants were provided with a map of the 80-acre site and had the opportunity to visit the property in person, to walk around the grounds and to ask questions. Following that, a televised public presentation featured proposals from various architects. Port, a landscape architecture and urban design firm based in Philadelphia, was selected. The company expressed confidence in its ability to meet the project’s strict timeline.

The property has many unique features. It is located along the Boise River; however, two-thirds of the site lies within the floodplain, and one-third is within the floodway. The Commissioners reached out to every relevant jurisdiction, inviting FEMA, the Corps of Engineers, and the Drainage District to the park. Port’s proposed concepts were then presented to determine the necessary steps needed to take to advance the park project.

In 1952, the park was part of the floodplain, and the Corps of Engineers suggested turning it into a wetland restoration project. The Ada County Commissioners were presented with two preliminary design proposals. A week after selecting a preliminary design, the attorneys and Commissioners proposed a land swap with a property at the corner of Glenwood and Chinden in exchange for Ladybird Park. The design was then updated to reflect the correct park boundaries. For phase one of the park, the plan included restoring 20 acres of wetlands, building 6.95 acres of playground, and constructing 5.45 acres of skatepark. For phase two, Athletic Club Boise was engaged to develop a professional soccer facility. One of the largest current challenges is the fluctuating water levels, which prevent workers from driving across the park and require careful management to avoid flooding as flood releases resume in the Boise River.

Parks & Recreation Commission Meeting Minutes – October 08, 2025

*Persons desiring accommodation for disabilities related to documents and/or hearings:
Please contact the City Clerk’s Office at 888-4433 at least 48 hours prior to the meeting*

The floor was opened for questions.

Commission Chair Don Gelsomino commended Joshua for a great presentation and for not being afraid to reach out to companies in other states that have created and worked on successful parks.

1. Commissioner Mandi Roberts asked whether Port brought the design through the design development phase and then collaborated with the other companies, or if they passed it off to them.

Joshua stated that a key milestone for the project was coordinating with the Corps of Engineers. He emphasized the importance of working with a firm experienced in wetland restoration projects. He noted that Rio ASE and Great Ecology are familiar with the Boise River and the Walla Walla, and they have experience working with FEMA and the Corps of Engineers. Port is the principal design team, but they do work with many sub-consultants.

2. Commissioner Roberts asked if Ladybird Park was a National Park.

Joshua stated that it is encumbered under the National Parks and Recreation Department.

3. Commissioner Roberts also asked about the plans for the Boise fairgrounds as a whole.

Joshua said that members of the public spoke out stating that they did not want the location to change; the plan right now is to repaint, repave, and revitalize the fairgrounds.

4. Commissioner Terry Dennington asked what would happen if flooding occurred at the park, and whether it would affect the soccer fields or any other park additions.

Joshua stated that the soccer field is outside of the floodway. He noted that there are 20 acres of flood storage, and that the project has created flood storage rather than flood liability.

5. Commissioner Dennington asked how close the project is to its budget.

Joshua stated that \$42 million has been set aside for the project. Most bids came in around \$31 million, which allows for higher-end finishes and upgrades to the features since the project is currently below budget.

6. Commissioner Dennington asked if Athletic Club Boise would oversee all park maintenance.

Joshua stated that there will be a base ground lease agreement with them; however, there will also be profit sharing from parking fees, liquor sales, and ticket fees. The funds from profit sharing will cover the costs of the ground maintenance team.

7. Garrett White asked if the soccer field will be open to the public.

Joshua stated that the professional soccer field currently under construction is intended for the club's use only. Additional fields are planned, but these would only be available to use for those in partnership with the Athletic Club Boise. It is open to other teams but not entirely open for public use.

No other questions were raised from the Commissioners.

5. MPR Department Forestry Update

Kyle Yorita, Meridian City's Arborist provided a PowerPoint presentation with a Forestry update. For 24 years, the City of Meridian has qualified as a Tree City by the Tree City USA Arbor Day Foundation. We have qualified for a Growth Award for 12 years with this being our 6th consecutive year. Two years ago, we joined Tree Cities of the World, we are one of 44 cities recognized in the United States. There are only 242 cities worldwide that qualify for this program. In order to be a part of the Tree City USA program and the Tree Cities of the World program, you must maintain certain criteria to be in these programs. Some examples of requirements are to have a Tree Board or Department established, observe Arbor Day, have a proclamation, a community forestry program budget of at least \$2 per capita, have a full tree inventory, have a net positive planting-to-removal ratio, and have systematic maintenance on the trees.

Idaho Conservation Corps is an organization that employs youth and young adults, giving them education and on-the-job training. They go out and build trails for the Bureau of Land Management and the U.S. Forestry Service, they inventory trees and they do pruning. They inventoried Kleiner Park, Settlers Park, Champion Park, 8th Street Park, Tully Park, Downtown and Split Corridor, Gordon Harris Park, and Lakeview Golf Course. They inventoried a total of 4,300 out of roughly 6,900 trees. The new process saved a lot of time in both inventory and bug drenching, cutting the drenching from one month to just over two weeks.

Upcoming projects include:

- Western State Cat Excavation Tree Plant – They are expanding their parking lot and couldn't fit all of the trees needed on their property. They will be purchasing trees for us to use offsite
- Multi-park Tree Planting – Western State Cat Excavation will be completing a community service project and will help us plant trees throughout the city and at Julius Kleiner Park.
- Lakeview Tree Planting and Pruning – Replacing trees that have died due to bugs or scale.
- Tree City Signage Update – Updating all signage.
- Christmas Tree – Hanging all the lights on the Christmas tree.

Future plans include:

- Continuing to expand inventory and coverage
- Focusing on Emerald Ash Borer preparedness
- Continuing to increase the tree canopy across Meridian
- Maintaining and exceeding Tree City USA and Growth Award standards

The floor was opened for questions.

1. Commissioner Jennifer Bobo asked if they were able to continue from the inventory that was originally started or if they had to restart entirely.

Kyle stated that they were able to use the originally inventoried trees and build off that since all the information was stored in the cloud.

2. Commissioner Terry Dennington asked if Fall is the best time of year to plant trees.

Kyle stated that it is one of the best times to plant trees. When planting trees in the summer, you must closely watch the trees to ensure that they do not die.

3. Commissioner Dennington asked if we donate any funds to the Idaho Conservation Corps.

Kyle stated that we do not give them monetary donations, but we do provide yearly training on measuring trees, the inventory program that is used, and why this is done. This program is used in every city in Idaho and is useful for them to know.

4. Commissioner Dennington also asked what the age range is for the members of the Idaho Conservation Corps program.

Kyle stated that there are a few different sessions, one is their young adults crew and one is a youth crew, and they typically run a few different sessions throughout the year.

5. Commissioner Mandi Roberts asked Kyle what his favorite tree is and why.

Kyle stated that his favorite tree is a Purple Catalpa.

No further questions were raised by the Commissioners.

6. MPR Commissioner John Nesmith Farewell & Recognition

Steve Siddoway, Meridian Parks and Recreation Director, presented a plaque to Commissioner John Nesmith in recognition of 19 years of service to the City of Meridian Parks and Recreation Commission, from January 2006 to October 2025, with much gratitude for his loyalty, dedication, and many contributions.

Each of the Commissioners thanked Commissioner Nesmith for his service and dedication to the City of Meridian Parks and Recreation Commission.

7. MPR Commission Bylaws

Emily Kane, Deputy City Attorney, presented a PowerPoint on the Parks and Recreation Commission Bylaws. The bylaws set forth the process of how officers are elected—their responsibilities and terms. They also cover how an agenda is prepared, how meetings are conducted, who prepares meeting minutes, how subcommittees are established, and how voting works on the commission.

Under Meridian City Code: Each advisory commission shall adopt bylaws for the proper conduct of the commission's business. All commission bylaws are subject to approval by the Mayor and City Council after recommendation by the Commission. The commission last adopted the latest version of the bylaws in 2015.

Proposed Bylaws

Article I: Purpose

- Purpose of the bylaws – framework for what happens at meetings

Article II: Officers

- Chair and vice-chair
- Sitting vice-chair automatically nominated for chair at annual elections
- What to do if chair or vice-chair leaves the commission

Article III: Meetings

- Staff will send a meeting reminder to commissioners
- Quorum + majority of appointed commissioners
- Order of business
- Staff prepares the agenda in consultation with Chair
- Chair runs the meeting and invites speakers
- Staff prepares minutes
- Chair, with commission's approval, establishes subcommittees
- Voting is done out loud (no secret votes)

Article IV: Amendment of Bylaws

- Commission may recommend updates to bylaws

Article V: Adoption and effective date

- Date of adoption; effective upon ratification by City Council (via resolution)

Next Steps

- Commission votes on whether to recommend approval of proposed bylaws
- City Attorney's Office will forward a proposed resolution to City Council for approval
- New bylaws in effect

The floor was opened for questions.

1. Commissioner Mandi Roberts asked if there were any changes made from the previous bylaws.

Emily stated that the main reason for revising the bylaws was to make them uniform across all Commissions. There were a number of overlaps with the law that were repetitive and/or outdated.

2. Commissioner Terry Dennington asked if the commissioners had to live in the city or if they needed to live in the area of impact.

Emily stated that this is correct, the commissioners must live within the city boundaries; however, one or two of the commissioners shall live within the area of impact. The area of impact refers to future city limits of Meridian that are not yet annexed.

No further questions were raised from the Commissioners.

8. Approval of Bylaws

Commission Chair Don Gelsomino asked for a motion to approve the proposal for the new bylaws and to allow Emily to draft her proposal for City Council. Commissioner John Nesmith moved to approve the proposal presented by Emily. Commissioner Mandi Roberts seconded. All were in favor of the motion.

9. MPR Facilities Tour Debrief

Steve Siddoway, Meridian Parks and Recreation Director, provided a debrief from the Parks and Recreation facilities tour. He noted that the only potential change to the tour would be moving it to the middle of the day to allow for greater attendance from the Mayor and some Council members. The Commissioners expressed flexibility with this adjustment and shared that they would be excited to see increased participation.

STAFF REPORTS

10. MPR Staff

Director Steve Siddoway reported on the following:

1. Performance evaluations are wrapping up.
2. With the start of the new fiscal year, many projects are ramping up.

The floor was opened for questions. No further questions were raised from the Commissioners.

Parks Superintendent Mike Barton reported on the following:

1. Tammy Street Park is getting a new playground.
2. The Lakeview Monument sign is in the process of being redesigned, and a few concepts should be presented soon.
3. Ustick Road is being widened, with medians being added.
4. The Bark Park in Discovery Park is in the process of being expanded.
5. Settlers Park has an expansion project planned.
6. There are a few open job listings, with interviews upcoming.

The floor was opened for questions.

1. Commissioner Alan Nesmith asked where the Lakeview sign will be going.

Mike stated that the sign will be posted in the front lawn area instead of the nearby street corner. There are no current mock up designs for the sign yet.

2. Commissioner Nesmith also asked what the fee increase would be and if that still needs to go to city council for review.

Garrett White responded, stating that the proposal is a 4% increase across the board. This brings our fees up to the average comparable golf courses across the valley. This will be brought to council November 5th for a public hearing.

3. Commissioner Terry Dennington asked if the sign is going to state "Lakeview Golf Course Club House" or what the official name will be.

Mike Barton stated that it will say Lakeview Golf Course but with the sign being in front of the clubhouse, this way it will help to identify the clubhouse.

4. Commissioner Chair Don Gelsomino asked if the Storey Bark Park signage is planned to be updated this year.

Mike stated that we plan to use the signs for a few more years unless we begin to see a significant amount of wear and tear on them over this next year.

No further questions were raised from the Commissioners.

Recreations Superintendent Garret Whitte reported on the following:

1. Annual evaluations
2. Community Center Project
3. Reviewing Park fees
4. Amplified Sound Policy revisions
5. Softball is wrapping up
6. The volleyball season is about to begin
7. Holiday Classic Volleyball registration is open
8. Homecourt is starting to get busier as the weather gets colder outside
9. The pool is still in use for high school swim teams, it will be winterized November 7th

The floor was opened for questions. No further questions were raised from the Commissioners.

Pathways Project Manager Kim Warren reported on the following:

1. The Fivemile pathway that goes under Highway 16 has been roughed out and they have some signage up.
2. The Trail Hub restroom has been awarded a contract.
3. Rail with Trail is about to begin the bidding process

The floor was opened for questions.

1. Commissioner Mandi Roberts asked if the Pathways Masterplan has been completed.

Kim stated that it is not yet complete. She is still corresponding with Cassandra to get art into some of our pathways.

2. Commissioner Jennifer Bobo asked how much farther the Fivemile Trailhead will continue on after McDermott.

Kim stated that it will continue on as far as we can continue it, the plan is to go until it reaches the end of our impact area.

Steve Siddoway also stated that this pathway will eventually tie into the Field's District Park that we recently purchased.

No further questions were raised from the Commissioners.

NEXT MEETING ~ Wednesday, November 12, 2025 at 4 PM

ADJOURNMENT

Commissioner Chair Don Gelsomino called for a motion to adjourn the meeting. Commissioner Mandi Roberts moved to adjourn. Commissioner John Nesmith seconded. All were in favor of the motion.

There being no further business, the meeting adjourned at approximately 6:28p.m.

2025 All-Commission Goals:

1. Participate in the design and programming of a new Community Center.
2. Support development of a connected pathway system across the City of Meridian, with a focus on user experience amenities and improved connectivity.
3. Participate in the development of the Pathways Master Plan Update.
4. Continue to provide feedback for ongoing park improvements and enhancements.
5. Participate in the partnership with the Meridian Arts Commission to add theming and identity reinforcing art in Meridian parks and along pathways. Focus this year on Chateau Park and the Arts Master Plan.
6. Support future improvements at Lakeview Golf Course, including new on-course restrooms.
7. Pursue a future park site in Northwest Meridian "Fields District."
8. Engage other task forces, commissions, entities, and agencies through workshops and other outreach for partnership opportunities.

Parks & Recreation Commission Meeting Minutes – October 08, 2025

Persons desiring accommodation for disabilities related to documents and/or hearings:

Please contact the City Clerk's Office at 888-4433 at least 48 hours prior to the meeting

9. Support ongoing operations of the Meridian Pool.
10. Pursue improved communication tools and opportunities to engage the community and diverse interests.

THE PARK AT EXPO IDAHO (Boise, ID)—A Park as Product of the Pandemic





Ada County, Idaho, June 21–24, 2021

Panel Scope

In 2020, Ada County, Idaho, convened a group of local stakeholders—the Expo Idaho Citizens Advisory Committee (the Committee)—to provide input on the future uses and functions at Expo Idaho, which is the site of the Western Idaho Fair and many year-round community uses. After community engagement and deliberation, the Committee presented three development directions for the site for consideration by the Ada County Board of Commissioners.

Although components of each suggestion could stand alone or be combined in varying ways, the three directions proposed for the site are distinguished by leading themes. The first focused on an agricultural heritage center and outdoor education campus. The second on a sports, events, and recreation complex. The third envisioned a mixed-use town center. In all proposals, the Western Idaho Fair would remain on the site.

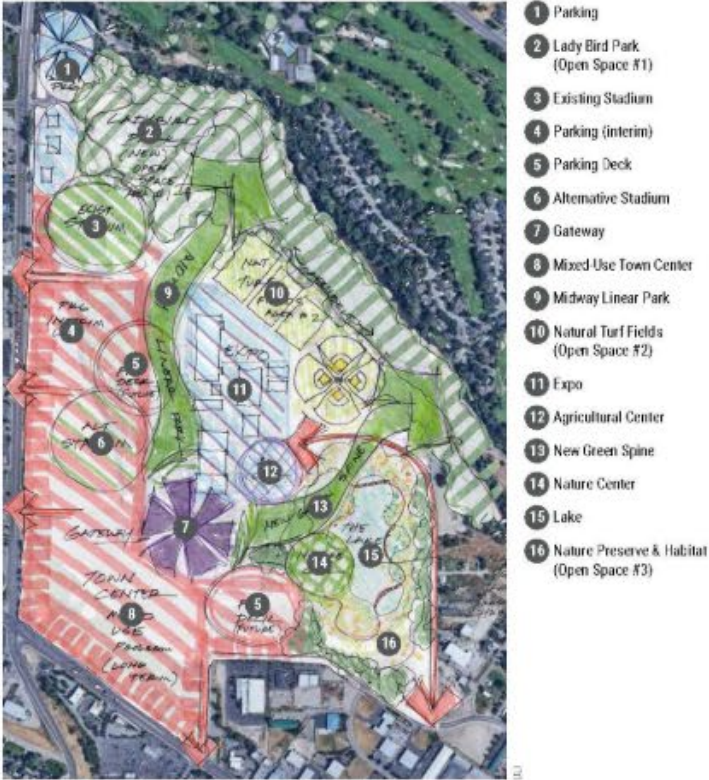
The Board of Commissioners asked the Advisory Services panel to consider the feasibility and economic impact of each of these scenarios to better understand the potential future uses of the site.

- **Preserve:** Strive to preserve the site's unique open-space resources: Lady Bird Park, public recreation fields, connection and access to the Boise River, and access to the Greenbelt.
- **Celebrate:** Celebrate the community's heritage, the love and appreciation for the Western Idaho Fair, Expo Idaho as a gathering place for diverse communities, and the Boise Hawks as a source of community pride and family entertainment.
- **Connect:** Respond to growth and change with a range of active and complementary uses, conceiving of the whole site as a way to deliver broad public benefit to citizens of a growing Ada County.

Organization of Uses

All of the community's desired uses for the Expo Idaho site can be successfully accommodated with strategic organization. The panel's approach incorporates all potential key uses as amplified by the Citizens Advisory Committee.

Key elements to the panel's approach include making the Expo Center, preserved and enhanced with a potential new agricultural center, a central element. This



A "big idea" plan for the potential organization of uses on the site.

A ULI Virtual Advisory Services Panel Report



Coronavirus State & Local Fiscal Recovery Funds: 2022 Overview of the Final Rule

U.S. DEPARTMENT OF THE TREASURY



U.S. DEPARTMENT OF THE TREASURY

Note: In August 2023, Treasury released an interim final rule that implements the new eligible uses added to the SLFRF program by the Consolidated Appropriations Act, 2023. Treasury anticipates issuing FAQs for the 2023 interim final rule at a later date. Recipients may find helpful the Overview of the 2023 Interim Final Rule, which provides a summary of major provisions of the 2023 interim final rule for informational purposes. As noted below, this overview document pertains to the 2022 final rule. The Consolidated Appropriations Act, 2023 did not alter how recipients may use SLFRF funds for the existing eligible uses described in the 2022 final rule and summarized in this document. Recipients may continue to use SLFRF funds in accordance with the 2022 final rule.

The Overview of the Final Rule provides a summary of major provisions of the final rule for informational purposes and is intended as a brief, simplified user guide to the final rule provisions.

The descriptions provided in this document summarize key provisions of the final rule but are non-exhaustive, do not describe all terms and conditions associated with the use of SLFRF, and do not describe all requirements that may apply to this funding. Any SLFRF funds received are also subject to the terms and conditions of the agreement entered into by Treasury and the respective jurisdiction, which incorporate the provisions of the final rule and the guidance that implements this program.

Rod Beck, Commissioner
Ryan Davidson, Commissioner
Kendra Kenyon, Commissioner

The Park at Expo Idaho—EXISTING SITE EXTENTS



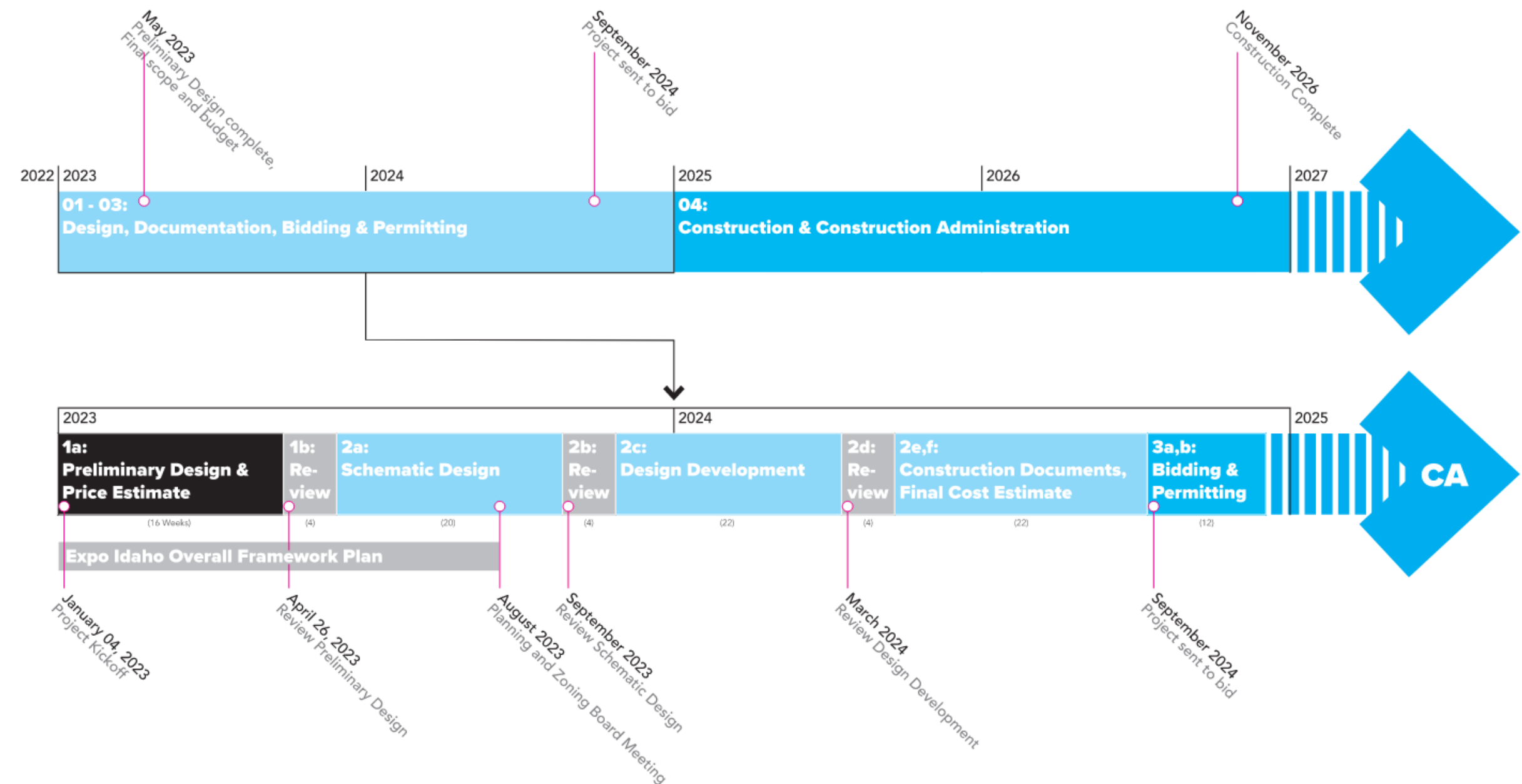
port

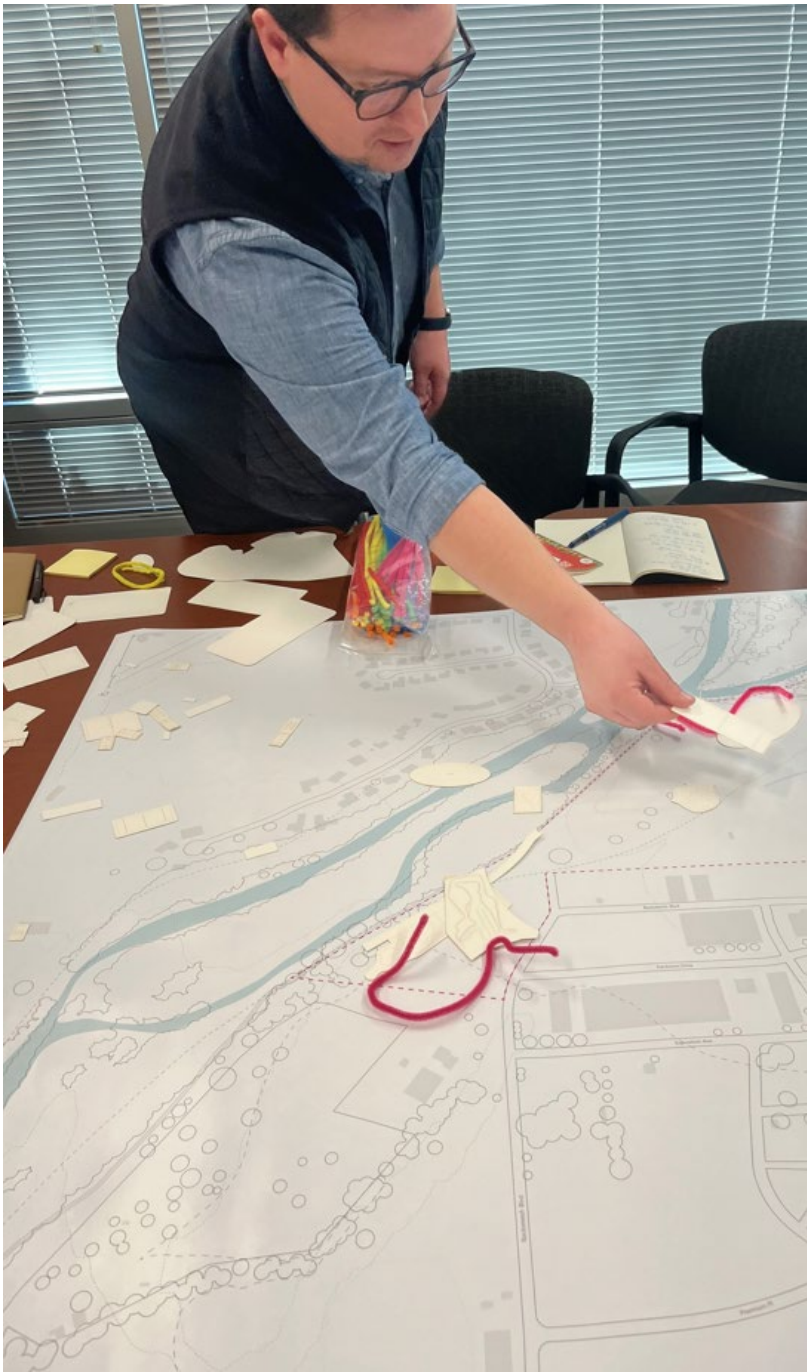
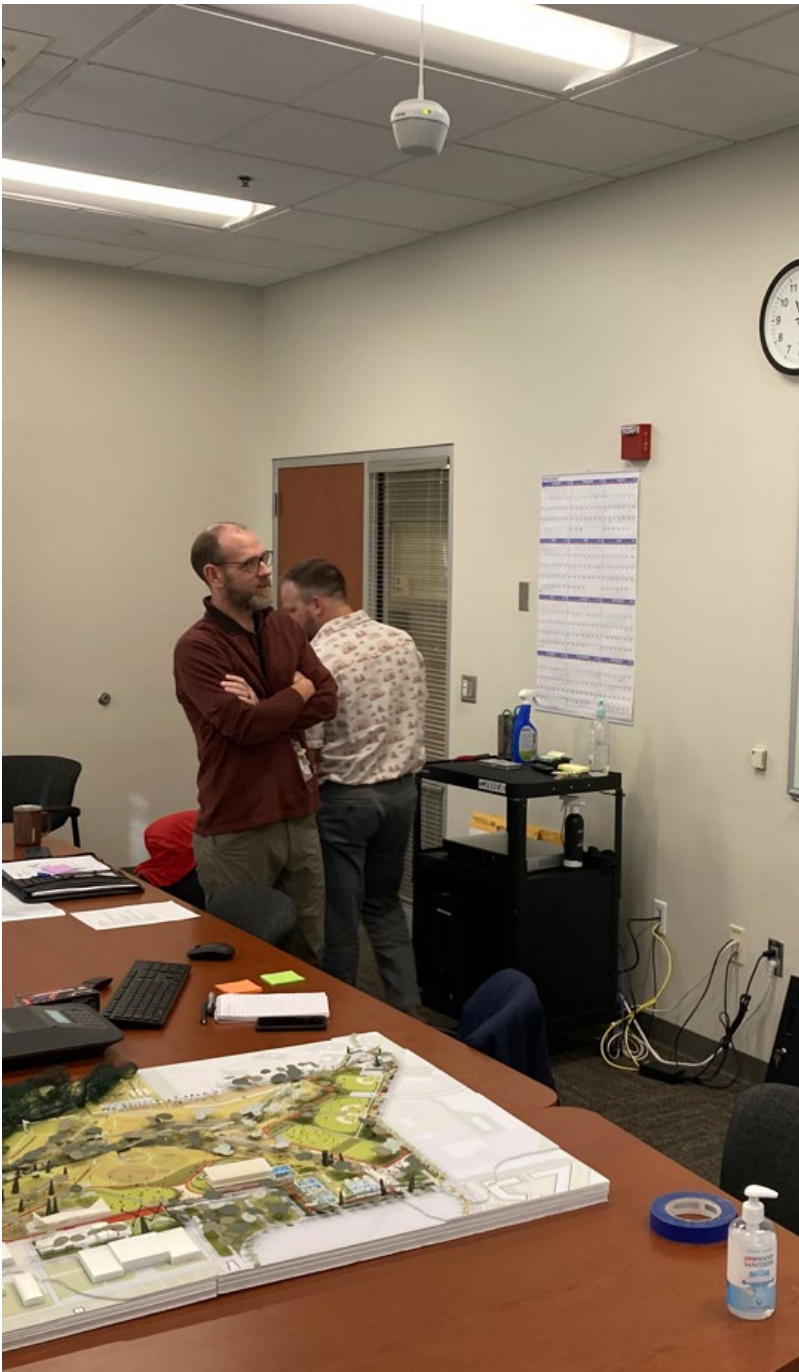
Landscape Architecture + Urban Design

Philadelphia / Chicago



Project Schedule—DESIGN, DOCUMENTATION, BIDDING & PERMITTING





Garden City Connection—GREENBELT AND RIVER NETWORK OF PARKS



BARBER PARK



MARIANNE WILLIAMS PARK



KRISTIN ARMSTRONG PARK



JULIA DAVIS PARK



ANN MORRISON PARK



KATHYRN ALBERTSON PARK



BERNADINE QUINN RIVERSIDE PARK



ESTHER SIMPLOT PARK



WILLOW LANE PARK & ATHLETIC COMPLEX

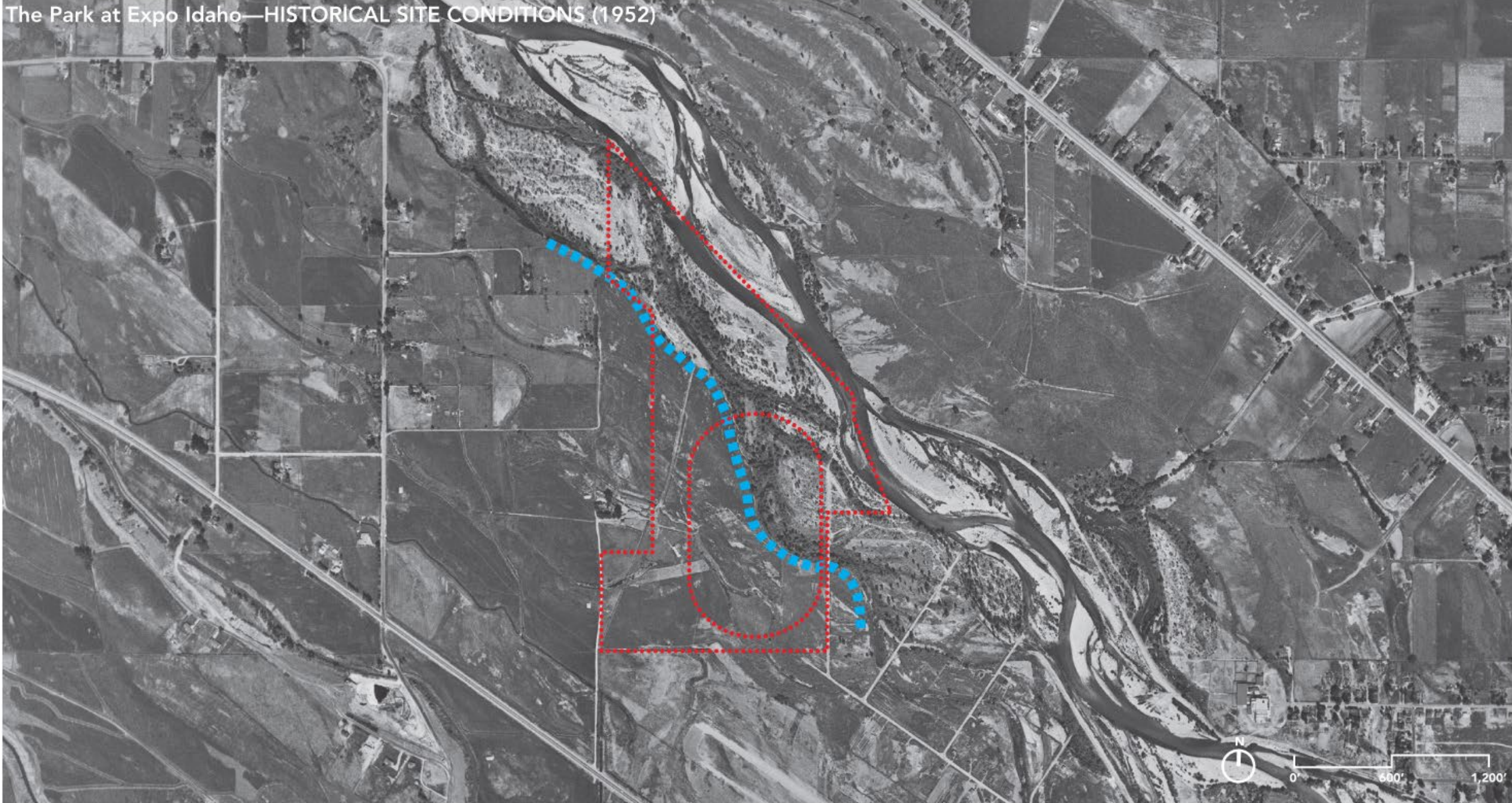
The Park at Expo Idaho—A SITE/OPPORTUNITY LIKE NO OTHER



The Park at Expo Idaho—EXISTING SITE CONSIDERATIONS



The Park at Expo Idaho—HISTORICAL SITE CONDITIONS (1952)



THE PARK at EXPO IDAHO Planning Framework



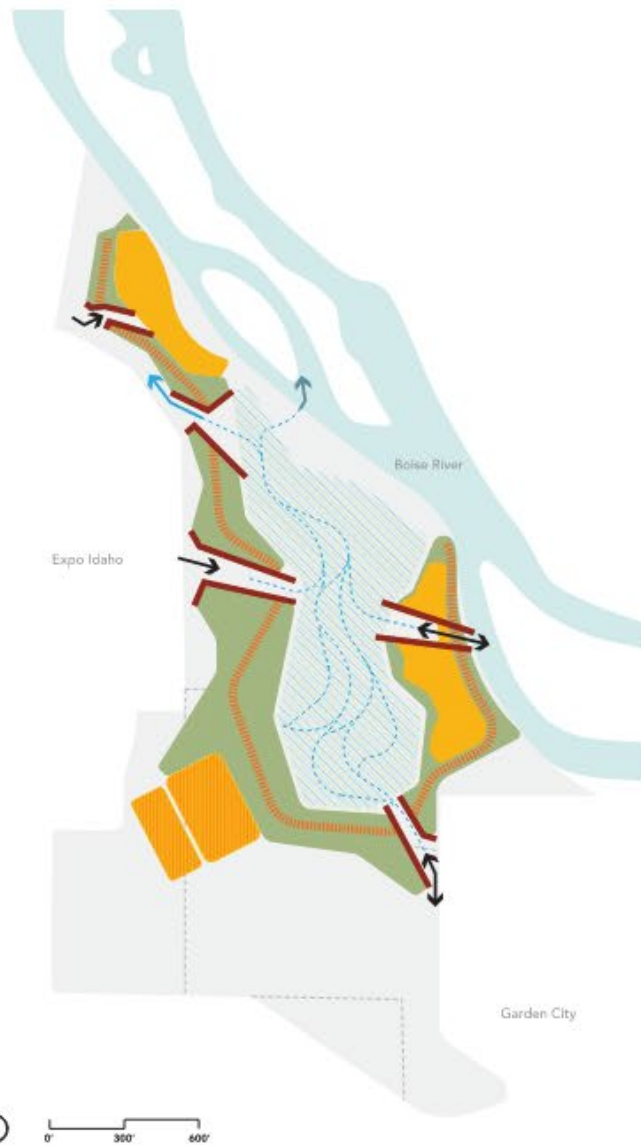
Our strategy for the design of a new public park on the Expo Idaho Grounds is rooted in an aspiration to maximize both the PLAY VALUE and the ECOLOGICAL VALUE of the park in order to set a new precedent for riverside recreation within the Boise region.



Our strategy for the design of a new public park on the Expo Idaho Grounds is rooted in an aspiration to maximize both the PLAY VALUE and the ECOLOGICAL VALUE of the park in order to set a new precedent for riverside recreation within the Boise region.



Our strategy for the design of a new public park on the Expo Idaho Grounds is rooted in an aspiration to maximize both the PLAY VALUE and the ECOLOGICAL VALUE of the park in order to set a new precedent for riverside recreation within the Boise region.



Our strategy for the design of a new public park on the Expo Idaho Grounds is rooted in an aspiration to maximize both the PLAY VALUE and the ECOLOGICAL VALUE of the park in order to set a new precedent for riverside recreation within the Boise region.



Our strategy for the design of a new public park on the Expo Idaho Grounds is rooted in an aspiration to maximize both the PLAY VALUE and the ECOLOGICAL VALUE of the park in order to set a new precedent for riverside recreation within the Boise region.



Our strategy for the design of a new public park on the Expo Idaho Grounds is rooted in an aspiration to maximize both the PLAY VALUE and the ECOLOGICAL VALUE of the park in order to set a new precedent for riverside recreation within the Boise region.









Boise River

E Remington St

24 acre Land Swap
Lady Bird Park

N Kent Ln

N Winners Choice Dr

W Backstretch Blvd

Exhibitors Dr

Kent Ln

N Kent Ln

N Exposition Ave

The Park at Expo Idaho—EXISTING SITE EXTENTS





ANCHOR PARK at ENTRY POINTS

The proposed Framework begins by establishing areas of programmatic intensity at three points of entry to the park site—near the existing Expo Idaho Fairgrounds and where the Greenbelt enters the site from the east and the west.



ESTABLISH A BIG ECOLOGICAL CENTER

The Park's ecological core, the Lowlands, reconnects the site to the Boise River through enhanced stream channels and a revitalized floodplain. The Lowlands integrate restored wetlands and riparian habitats, creating a dynamic centerpiece that supports biodiversity and water quality while offering immersive visitor experiences.



WATER SYSTEMS

The park introduces new water systems, including re-routed irrigation channels, stormwater overflow, and connections to the Boise River that backwater during high water events, creating a dynamic and resilient hydrological network across the site.



STRATEGIC USE OF CUT + FILL

In order to re-establish a hydraulic connection the the Boise River floodplain, 50k cubic yards of soil were excavated and then strategically reused to shape the park's surrounding Ridges, enhancing both ecological function and recreational opportunities.



CONNECTIVITY + FRAMING EDGES

A series of intuitive circulation loops guide pedestrians into and through the park. In addition to extending the Greenbelt into the Park itself, a series of nested loops allows for varying itinerary lengths and durations. This main circuit is supplemented by an extensive network of accessible secondary paths and tertiary soft surface trails.



PROJECT ZONES

The park is organized into four distinct zones—All-Wheel Sports Garden, Adventure Playground, The Lowlands, and The Ridges—each offering unique recreational and ecological experiences while fostering a diverse and engaging public landscape

The Park at Expo Idaho—DESIGN DEVELOPMENT PLAN







GREEN BELT

EXISTING BRIDGE

MIST GARDEN

CLIMBING WALL

NATURAL PLAY

PLAY TOWER 5-12

ZIP-LINE

NATURAL PLAY

FOOD TRUCK PLAZA

PAVILION

LOWLAND PLAY

PLAY TOWER 2-5

LOWLAND PLAY

SWING

LOWLAND CHANNEL 'SPRING'

port























[SEASON TICKET DEPOSITS](#)

[OUR CREST](#)

[ABOUT ATHLETIC CLUB BOISE](#)

[TEAM STORE](#)

[ABOUT USL](#)

[NEWS](#)

[CONNECT WITH US](#)



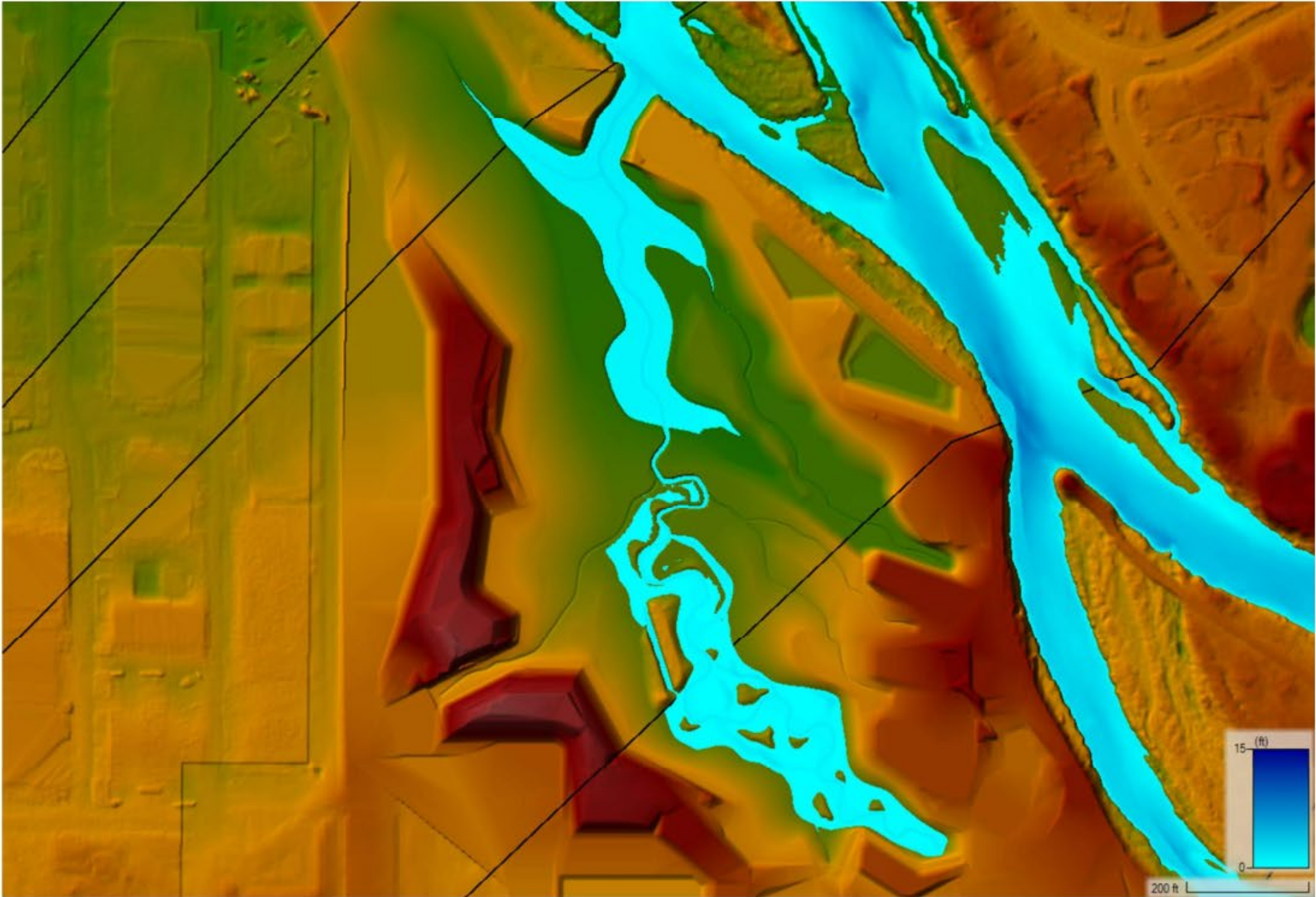
[SEASON MEMBERSHIP
REQUEST](#)

[STAY CONNECTED WITH
BOISE PRO SOCCER](#)





The Lowlands—1.5 YEAR FLOW



COLLABORATORS

Architect: Marlon Blackwell Architects

Civil: Horrocks, Inc.

Hydrology: Rio ASE

Permitting: Ecosystem Sciences

Ecology: Great Ecology

Skatepark: California Skateparks

Playground: Studio Ludo

Operations: Pros Consulting

Costing: Dharam Consulting

MEP: TJK Consulting Engineers

Structural: Plan North

Irrigation: Baer Design Group, LLC

Geotech: Atlas Technical Consultants

Traffic: Kittelson

Preservation: 106 Pro / TAG

AWARDS

APA Outstanding Plan Award, APA Idaho Chapter

ASLA Honor Award for Planning & Analysis, ASLA Illinois Chapter
Expo Idaho Design Competition



City of Meridian Forestry Program Highlights

Commission Meeting Overview

October 2025

About Me

- ▶ Kyle Yorita
- ▶ City Arborist
- ▶ 10 years w/ City



Tree City USA

- 24 Years

- ▶ Tree Board or Department Established
- ▶ Adopted Tree Ordinance
- ▶ Community Forestry Program with Annual Budget of at least \$2 per capita
- ▶ Arbor Day Observance and Proclamation



Growth Award - 12 Years (6th Consecutive)

- ▶ Recognizes continued commitment to excellence in community forestry
- ▶ 2025 Achievements:
 - B6 - Tree Inventory (3 points)
 - D6 - Planting to Removals Ratio (3 points)
 - D9 - Systemic Maintenance (5 points)



Tree Cities of the World - 2 Years

- ▶ Establish Responsibility
- ▶ Set Rules
- ▶ Know What You Have
- ▶ Allocate Resources
- ▶ Celebrate Achievements
- ▶ Proudly 1 of only 44 U.S. Cities recognized!



2025 Tree Inventory Summary

- ▶ Inventoried Sites:
 - ▶ • Kleiner Park
 - ▶ • Settlers Park
 - ▶ • Champion Park
 - ▶ • 8th Street Park
 - ▶ • Tully Park
 - ▶ • Downtown and Split Corridor
 - ▶ • Gordon Harris Park
 - ▶ • Lakeview Golf Course
- ▶ Total Trees Inventoried: 4,300 Trees!



Projects

- ▶ Western State Cat Excavation Tree Plant
- ▶ Multi-park Tree Planting
- ▶ Lakeview Tree Planting and Pruning
- ▶ Tree City Signage Update
- ▶ Christmas Tree



Looking Ahead

- ▶ Continue expanding inventory coverage
- ▶ Focus on Emerald Ash Borer Preparedness
- ▶ Continue Increasing Tree Canopy Across the City
- ▶ Maintain and exceed Tree City USA and Growth Award standards

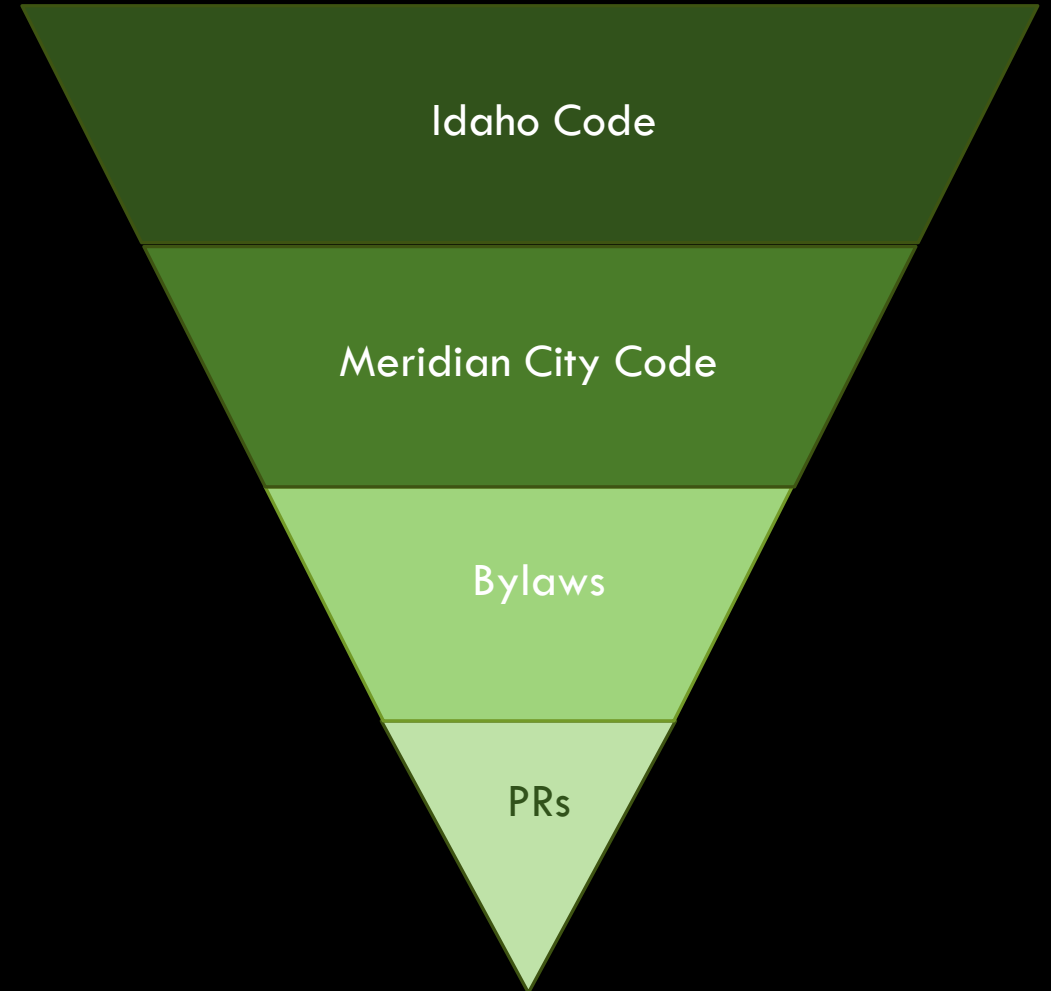


PARKS AND RECREATION COMMISSION BYLAWS

Emily Kane, Deputy City Attorney
October 8, 2025

GUIDING DOCUMENTS

- Idaho Code: Provides authority for cities to create commissions
- City Code: Establishes commission + duties and responsibilities
- Bylaws: Framework for convening meeting and conducting business
- Parliamentary rules: Procedures for communicating and making decisions during a meeting



IDAHO CODE

- Idaho Code § 50-210: “The mayor and council shall have authority to appoint such boards, commissions and committees as may be deemed necessary or expedient to assist the mayor and council in better carrying out the responsibilities of their offices.”
- Responsibilities, duties and authority of commission to be enumerated by city ordinance



CITY CODE

- Purpose of commission
- Commission responsibilities, duties, and authority
- Commissioner qualifications
- Date, time and place of meetings (to allow annual meeting notice per Idaho Code § 74-204(1))



BYLAWS

- Officers' election, responsibilities, terms
- How agenda is prepared
- How meetings are conducted
- Who prepares meeting minutes
- How subcommittees are established
- How voting works



PARLIAMENTARY RULES

Parliamentary rules establish procedures for communicating and making decisions during a meeting:

- May speak only when recognized by the chair
- Actions are taken by motion, second, discussion, vote
- Statement, amendment of motions
- Officer election process



EFFECTUATION OF BYLAWS

- Meridian City Code § 2-1-1(C)(2): Each advisory commission shall adopt bylaws for the proper conduct of the commission's business. All commission bylaws are subject to approval by the Mayor and City Council after recommendation by the Commission.
- MPRC adopted latest version in 2015
- Ratified by City Council on January 12, 2016 (Resolution no. 16-1111)

CITY OF MERIDIAN RESOLUTION NO. 16-1111

BY THE CITY COUNCIL: BIRD, BORTON, CAVENER, MILAM, PALMER, ZAREMBA

A RESOLUTION OF THE MAYOR AND THE CITY COUNCIL OF THE CITY OF MERIDIAN APPROVING THE BYLAWS OF THE MERIDIAN PARKS AND RECREATION COMMISSION AS AMENDED ON DECEMBER 9, 2015, AND PROVIDING AN EFFECTIVE DATE.

WHEREAS, pursuant to Meridian City Code section 2-4-4(B), at its meeting on December 9, 2015, the Meridian Parks and Recreation Commission voted unanimously to recommend to City Council that it approve the "Bylaws of the Meridian Parks and Recreation Commission as Amended on December 9, 2015," attached hereto as *Exhibit A*;

WHEREAS, the City Council of the City of Meridian deems the approval of such bylaws to be in the best interest of the City of Meridian in that they facilitate the efficient operation of the Meridian Parks and Recreation Commission;

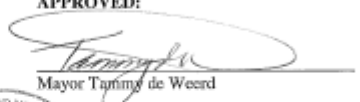
NOW THEREFORE, BE IT RESOLVED BY THE MAYOR AND CITY COUNCIL OF THE CITY OF MERIDIAN CITY, IDAHO:

Section 1. That the City Council of the City of Meridian hereby approves the Bylaws of the Meridian Parks and Recreation Commission as Amended on December 9, 2015, attached hereto as *Exhibit A*.

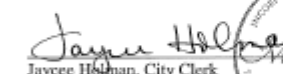
Section 2. That this Resolution shall be in full force and effect immediately upon its adoption and approval.


ADOPTED by the City Council of the City of Meridian, Idaho, this 12th day of January, 2016.

APPROVED by the Mayor of the City of Meridian, Idaho, this 12th day of January, 2016

APPROVED: 
Mayor Tammy de Weerd

ATTEST:

By: 
Jaycee Holman, City Clerk



RESOLUTION APPROVING BYLAWS OF MERIDIAN PARKS & RECREATION COMMISSION PAGE 1 OF 2

PROPOSED BYLAWS

ARTICLE I: Purpose

- Purpose of the bylaws – framework for what happens at meetings

ARTICLE II: Officers

- Chair and vice-chair
- Sitting vice-chair automatically nominated for chair at annual elections
- What to do if chair or vice-chair leaves the commission

PROPOSED BYLAWS

ARTICLE III: Meetings

- Staff will send a meeting reminder to commissioners
- Quorum = majority of appointed commissioners
- Order of business
- Staff prepares the agenda in consultation with Chair
- Chair runs the meeting and invites speakers
- Staff prepares minutes
- Chair, with commission's approval, establishes subcommittees
- Voting is done out loud (no secret votes)

PROPOSED BYLAWS

ARTICLE IV: Amendment of Bylaws

- Commission may recommend updates to bylaws

ARTICLE V: Adoption and effective date

- Date of adoption; effective upon ratification by City Council (via resolution)

NEXT STEPS

- Commission votes on whether to recommend approval of proposed bylaws
- City Attorney's Office will forward a proposed resolution to City Council for approval
- New bylaws in effect

